



wwPDB X-ray Structure Validation Summary Report ⓘ

May 14, 2020 – 06:58 am BST

PDB ID : 5CGE
Title : Structure of Hydroxyethylthiazole Kinase ThiM from *Staphylococcus aureus* in complex with substrate analog 2-(2-methyl-1H-imidazole-1-yl)ethanol
Authors : Kuenz, M.; Drebes, J.; Windshuegel, B.; Cang, H.; Wrenger, C.; Betzel, C.
Deposited on : 2015-07-09
Resolution : 1.62 Å(reported)

This is a wwPDB X-ray Structure Validation Summary Report for a publicly released PDB entry.

We welcome your comments at validation@mail.wwpdb.org

A user guide is available at

<https://www.wwpdb.org/validation/2017/XrayValidationReportHelp>

with specific help available everywhere you see the ⓘ symbol.

The following versions of software and data (see [references ⓘ](#)) were used in the production of this report:

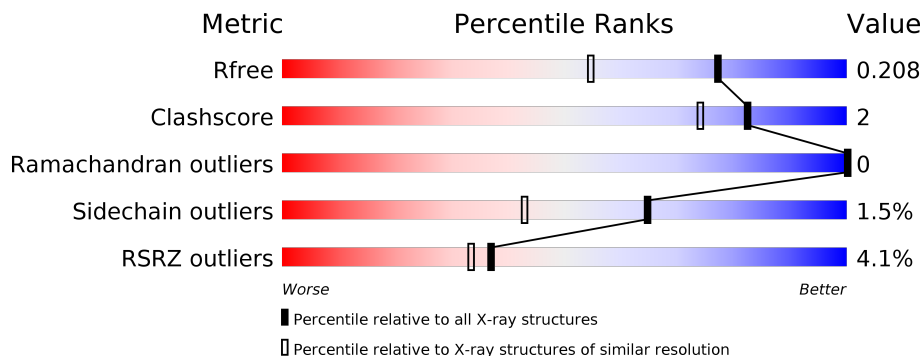
MolProbity : 4.02b-467
Mogul : 1.8.5 (274361), CSD as541be (2020)
Xtriage (Phenix) : 1.13
EDS : 2.11
Percentile statistics : 20191225.v01 (using entries in the PDB archive December 25th 2019)
Refmac : 5.8.0158
CCP4 : 7.0.044 (Gargrove)
Ideal geometry (proteins) : Engh & Huber (2001)
Ideal geometry (DNA, RNA) : Parkinson et al. (1996)
Validation Pipeline (wwPDB-VP) : 2.11

1 Overall quality at a glance

The following experimental techniques were used to determine the structure:
X-RAY DIFFRACTION

The reported resolution of this entry is 1.62 Å.

Percentile scores (ranging between 0-100) for global validation metrics of the entry are shown in the following graphic. The table shows the number of entries on which the scores are based.



Metric	Whole archive (#Entries)	Similar resolution (#Entries, resolution range(Å))
R_{free}	130704	4693 (1.64-1.60)
Clashscore	141614	5002 (1.64-1.60)
Ramachandran outliers	138981	4888 (1.64-1.60)
Sidechain outliers	138945	4887 (1.64-1.60)
RSRZ outliers	127900	4609 (1.64-1.60)

The table below summarises the geometric issues observed across the polymeric chains and their fit to the electron density. The red, orange, yellow and green segments on the lower bar indicate the fraction of residues that contain outliers for ≥ 3 , 2, 1 and 0 types of geometric quality criteria respectively. A grey segment represents the fraction of residues that are not modelled. The numeric value for each fraction is indicated below the corresponding segment, with a dot representing fractions $\leq 5\%$. The upper red bar (where present) indicates the fraction of residues that have poor fit to the electron density. The numeric value is given above the bar.

Mol	Chain	Length	Quality of chain
1	A	277	 3% 82% 8% • 8%
1	B	277	 4% 85% 9% • 5%
1	C	277	 % 83% 6% • 10%
1	D	277	 6% 81% 7% • 12%
1	E	277	 5% 89% 7% •
1	F	277	 5% 83% 8% • 8%

2 Entry composition [i](#)

There are 4 unique types of molecules in this entry. The entry contains 12018 atoms, of which 0 are hydrogens and 0 are deuteriums.

In the tables below, the ZeroOcc column contains the number of atoms modelled with zero occupancy, the AltConf column contains the number of residues with at least one atom in alternate conformation and the Trace column contains the number of residues modelled with at most 2 atoms.

- Molecule 1 is a protein called Hydroxyethylthiazole kinase.

Mol	Chain	Residues	Atoms					ZeroOcc	AltConf	Trace
			Total	C	N	O	S			
1	A	255	Total 1901	C 1211	N 312	O 372	S 6	27	0	0
1	B	262	Total 1954	C 1242	N 320	O 385	S 7	31	0	0
1	C	250	Total 1878	C 1198	N 307	O 367	S 6	21	0	0
1	E	267	Total 2006	C 1276	N 327	O 396	S 7	29	0	0
1	D	245	Total 1817	C 1164	N 299	O 348	S 6	33	0	0
1	F	255	Total 1897	C 1209	N 311	O 370	S 7	19	0	0

There are 84 discrepancies between the modelled and reference sequences:

Chain	Residue	Modelled	Actual	Comment	Reference
A	264	GLU	-	expression tag	UNP Q6GEY3
A	265	ASN	-	expression tag	UNP Q6GEY3
A	266	LEU	-	expression tag	UNP Q6GEY3
A	267	TYR	-	expression tag	UNP Q6GEY3
A	268	PHE	-	expression tag	UNP Q6GEY3
A	269	GLN	-	expression tag	UNP Q6GEY3
A	270	SER	-	expression tag	UNP Q6GEY3
A	271	GLY	-	expression tag	UNP Q6GEY3
A	272	HIS	-	expression tag	UNP Q6GEY3
A	273	HIS	-	expression tag	UNP Q6GEY3
A	274	HIS	-	expression tag	UNP Q6GEY3
A	275	HIS	-	expression tag	UNP Q6GEY3
A	276	HIS	-	expression tag	UNP Q6GEY3
A	277	HIS	-	expression tag	UNP Q6GEY3
B	264	GLU	-	expression tag	UNP Q6GEY3
B	265	ASN	-	expression tag	UNP Q6GEY3
B	266	LEU	-	expression tag	UNP Q6GEY3

Continued on next page...

Continued from previous page...

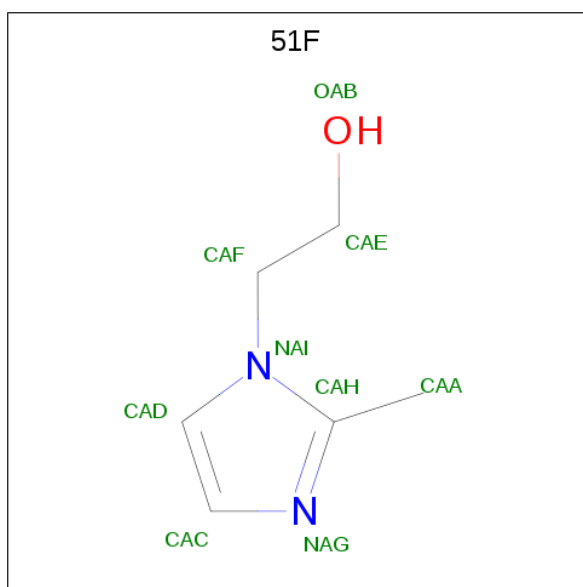
Chain	Residue	Modelled	Actual	Comment	Reference
B	267	TYR	-	expression tag	UNP Q6GEY3
B	268	PHE	-	expression tag	UNP Q6GEY3
B	269	GLN	-	expression tag	UNP Q6GEY3
B	270	SER	-	expression tag	UNP Q6GEY3
B	271	GLY	-	expression tag	UNP Q6GEY3
B	272	HIS	-	expression tag	UNP Q6GEY3
B	273	HIS	-	expression tag	UNP Q6GEY3
B	274	HIS	-	expression tag	UNP Q6GEY3
B	275	HIS	-	expression tag	UNP Q6GEY3
B	276	HIS	-	expression tag	UNP Q6GEY3
B	277	HIS	-	expression tag	UNP Q6GEY3
C	264	GLU	-	expression tag	UNP Q6GEY3
C	265	ASN	-	expression tag	UNP Q6GEY3
C	266	LEU	-	expression tag	UNP Q6GEY3
C	267	TYR	-	expression tag	UNP Q6GEY3
C	268	PHE	-	expression tag	UNP Q6GEY3
C	269	GLN	-	expression tag	UNP Q6GEY3
C	270	SER	-	expression tag	UNP Q6GEY3
C	271	GLY	-	expression tag	UNP Q6GEY3
C	272	HIS	-	expression tag	UNP Q6GEY3
C	273	HIS	-	expression tag	UNP Q6GEY3
C	274	HIS	-	expression tag	UNP Q6GEY3
C	275	HIS	-	expression tag	UNP Q6GEY3
C	276	HIS	-	expression tag	UNP Q6GEY3
C	277	HIS	-	expression tag	UNP Q6GEY3
E	264	GLU	-	expression tag	UNP Q6GEY3
E	265	ASN	-	expression tag	UNP Q6GEY3
E	266	LEU	-	expression tag	UNP Q6GEY3
E	267	TYR	-	expression tag	UNP Q6GEY3
E	268	PHE	-	expression tag	UNP Q6GEY3
E	269	GLN	-	expression tag	UNP Q6GEY3
E	270	SER	-	expression tag	UNP Q6GEY3
E	271	GLY	-	expression tag	UNP Q6GEY3
E	272	HIS	-	expression tag	UNP Q6GEY3
E	273	HIS	-	expression tag	UNP Q6GEY3
E	274	HIS	-	expression tag	UNP Q6GEY3
E	275	HIS	-	expression tag	UNP Q6GEY3
E	276	HIS	-	expression tag	UNP Q6GEY3
E	277	HIS	-	expression tag	UNP Q6GEY3
D	264	GLU	-	expression tag	UNP Q6GEY3
D	265	ASN	-	expression tag	UNP Q6GEY3
D	266	LEU	-	expression tag	UNP Q6GEY3

Continued on next page...

Continued from previous page...

Chain	Residue	Modelled	Actual	Comment	Reference
D	267	TYR	-	expression tag	UNP Q6GEY3
D	268	PHE	-	expression tag	UNP Q6GEY3
D	269	GLN	-	expression tag	UNP Q6GEY3
D	270	SER	-	expression tag	UNP Q6GEY3
D	271	GLY	-	expression tag	UNP Q6GEY3
D	272	HIS	-	expression tag	UNP Q6GEY3
D	273	HIS	-	expression tag	UNP Q6GEY3
D	274	HIS	-	expression tag	UNP Q6GEY3
D	275	HIS	-	expression tag	UNP Q6GEY3
D	276	HIS	-	expression tag	UNP Q6GEY3
D	277	HIS	-	expression tag	UNP Q6GEY3
F	264	GLU	-	expression tag	UNP Q6GEY3
F	265	ASN	-	expression tag	UNP Q6GEY3
F	266	LEU	-	expression tag	UNP Q6GEY3
F	267	TYR	-	expression tag	UNP Q6GEY3
F	268	PHE	-	expression tag	UNP Q6GEY3
F	269	GLN	-	expression tag	UNP Q6GEY3
F	270	SER	-	expression tag	UNP Q6GEY3
F	271	GLY	-	expression tag	UNP Q6GEY3
F	272	HIS	-	expression tag	UNP Q6GEY3
F	273	HIS	-	expression tag	UNP Q6GEY3
F	274	HIS	-	expression tag	UNP Q6GEY3
F	275	HIS	-	expression tag	UNP Q6GEY3
F	276	HIS	-	expression tag	UNP Q6GEY3
F	277	HIS	-	expression tag	UNP Q6GEY3

- Molecule 2 is 2-(2-methyl-1H-imidazol-1-yl)ethanol (three-letter code: 51F) (formula: C₆H₁₀N₂O).



Mol	Chain	Residues	Atoms				ZeroOcc	AltConf
2	A	1	Total	C	N	O	0	0
			9	6	2	1		
2	B	1	Total	C	N	O	0	0
			9	6	2	1		
2	C	1	Total	C	N	O	0	0
			9	6	2	1		
2	E	1	Total	C	N	O	0	0
			9	6	2	1		
2	D	1	Total	C	N	O	0	0
			9	6	2	1		
2	D	1	Total	C	N	O	0	0
			9	6	2	1		

- Molecule 3 is MAGNESIUM ION (three-letter code: MG) (formula: Mg).

Mol	Chain	Residues	Atoms		ZeroOcc	AltConf
3	B	1	Total	Mg	0	0
			1	1		
3	A	1	Total	Mg	0	0
			1	1		
3	C	2	Total	Mg	0	0
			2	2		
3	E	1	Total	Mg	0	0
			1	1		

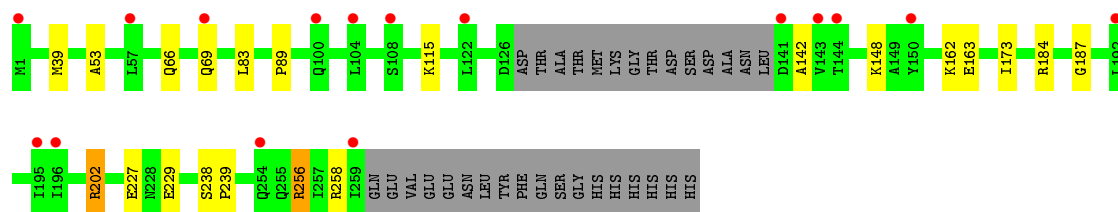
- Molecule 4 is water.

Mol	Chain	Residues	Atoms		ZeroOcc	AltConf
4	A	105	Total 105	O 105	0	0
4	B	129	Total 129	O 129	0	0
4	C	145	Total 145	O 145	0	0
4	E	58	Total 58	O 58	0	0
4	D	30	Total 30	O 30	0	0
4	F	39	Total 39	O 39	0	0

SER
GLY
HIS
HIS
HIS
HIS
HIS
HIS

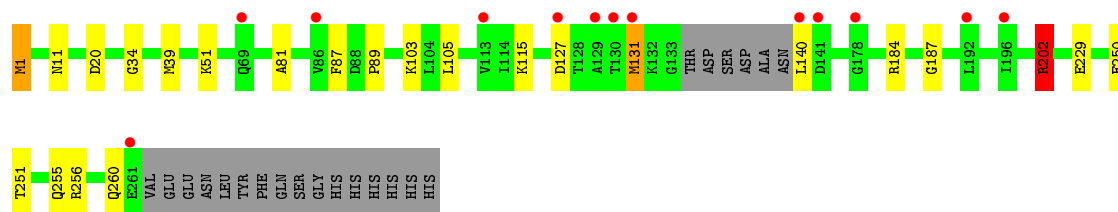
- Molecule 1: Hydroxyethylthiazole kinase

Chain D: 6% 81% 7% 12%



- Molecule 1: Hydroxyethylthiazole kinase

Chain F: 5% 83% 8% 8%



4 Data and refinement statistics

Property	Value	Source
Space group	P 1	Depositor
Cell constants a, b, c, α , β , γ	62.34Å 62.48Å 109.17Å 92.64° 92.05° 101.46°	Depositor
Resolution (Å)	30.00 – 1.62 29.86 – 1.62	Depositor EDS
% Data completeness (in resolution range)	93.2 (30.00-1.62) 93.2 (29.86-1.62)	Depositor EDS
R_{merge}	(Not available)	Depositor
R_{sym}	(Not available)	Depositor
$\langle I/\sigma(I) \rangle$ ¹	6.00 (at 1.62Å)	Xtriage
Refinement program	REFMAC 5.8.0049	Depositor
R, R_{free}	0.182 , 0.203 0.191 , 0.208	Depositor DCC
R_{free} test set	9508 reflections (4.98%)	wwPDB-VP
Wilson B-factor (Å ²)	18.5	Xtriage
Anisotropy	0.562	Xtriage
Bulk solvent k_{sol} (e/Å ³), B_{sol} (Å ²)	0.35 , 41.5	EDS
L-test for twinning ²	$\langle L \rangle = 0.48$, $\langle L^2 \rangle = 0.30$	Xtriage
Estimated twinning fraction	0.025 for -k,-h,-l	Xtriage
F_o, F_c correlation	0.96	EDS
Total number of atoms	12018	wwPDB-VP
Average B, all atoms (Å ²)	30.0	wwPDB-VP

Xtriage's analysis on translational NCS is as follows: *The largest off-origin peak in the Patterson function is 4.83% of the height of the origin peak. No significant pseudotranslation is detected.*

¹Intensities estimated from amplitudes.

²Theoretical values of $\langle |L| \rangle$, $\langle L^2 \rangle$ for acentric reflections are 0.5, 0.333 respectively for untwinned datasets, and 0.375, 0.2 for perfectly twinned datasets.

5 Model quality [i](#)

5.1 Standard geometry [i](#)

Bond lengths and bond angles in the following residue types are not validated in this section: MG, 51F

The Z score for a bond length (or angle) is the number of standard deviations the observed value is removed from the expected value. A bond length (or angle) with $|Z| > 5$ is considered an outlier worth inspection. RMSZ is the root-mean-square of all Z scores of the bond lengths (or angles).

Mol	Chain	Bond lengths		Bond angles	
		RMSZ	# Z >5	RMSZ	# Z >5
1	A	1.03	4/1925 (0.2%)	1.17	14/2620 (0.5%)
1	B	1.22	3/1979 (0.2%)	1.06	9/2693 (0.3%)
1	C	1.29	6/1902 (0.3%)	1.18	11/2587 (0.4%)
1	D	1.09	7/1841 (0.4%)	0.89	4/2506 (0.2%)
1	E	0.80	2/2032 (0.1%)	1.01	8/2764 (0.3%)
1	F	0.81	2/1921 (0.1%)	0.89	9/2613 (0.3%)
All	All	1.06	24/11600 (0.2%)	1.04	55/15783 (0.3%)

Chiral center outliers are detected by calculating the chiral volume of a chiral center and verifying if the center is modelled as a planar moiety or with the opposite hand. A planarity outlier is detected by checking planarity of atoms in a peptide group, atoms in a mainchain group or atoms of a sidechain that are expected to be planar.

Mol	Chain	#Chirality outliers	#Planarity outliers
1	A	0	2
1	C	0	1
1	D	0	1
1	E	0	1
1	F	0	1
All	All	0	6

The worst 5 of 24 bond length outliers are listed below:

Mol	Chain	Res	Type	Atoms	Z	Observed(Å)	Ideal(Å)
1	B	261	GLU	CG-CD	-30.14	1.06	1.51
1	D	184	ARG	CD-NE	-26.40	1.01	1.46
1	C	51	LYS	CE-NZ	-22.25	0.93	1.49
1	F	140	LEU	CB-CG	-17.37	1.02	1.52
1	C	47	GLU	CD-OE1	-17.07	1.06	1.25

The worst 5 of 55 bond angle outliers are listed below:

Mol	Chain	Res	Type	Atoms	Z	Observed(°)	Ideal(°)
1	C	184	ARG	NE-CZ-NH2	-22.42	109.09	120.30
1	A	184	ARG	NE-CZ-NH1	20.78	130.69	120.30
1	C	51	LYS	CD-CE-NZ	19.72	157.05	111.70
1	E	258	ARG	NE-CZ-NH1	19.37	129.99	120.30
1	E	258	ARG	NE-CZ-NH2	-17.98	111.31	120.30

There are no chirality outliers.

5 of 6 planarity outliers are listed below:

Mol	Chain	Res	Type	Group
1	A	100	GLN	Sidechain
1	A	184	ARG	Sidechain
1	C	20	ASP	Sidechain
1	D	258	ARG	Peptide
1	E	175	LEU	Mainchain

5.2 Too-close contacts [i](#)

In the following table, the Non-H and H(model) columns list the number of non-hydrogen atoms and hydrogen atoms in the chain respectively. The H(added) column lists the number of hydrogen atoms added and optimized by MolProbity. The Clashes column lists the number of clashes within the asymmetric unit, whereas Symm-Clashes lists symmetry related clashes.

Mol	Chain	Non-H	H(model)	H(added)	Clashes	Symm-Clashes
1	A	1901	0	1933	14	0
1	B	1954	0	1991	13	0
1	C	1878	0	1921	8	0
1	D	1817	0	1858	7	0
1	E	2006	0	2029	6	0
1	F	1897	0	1930	9	0
2	A	9	0	0	0	0
2	B	9	0	0	0	0
2	C	9	0	0	0	0
2	D	18	0	0	0	0
2	E	9	0	0	0	0
3	A	1	0	0	0	0
3	B	1	0	0	0	0
3	C	2	0	0	0	0
3	E	1	0	0	0	0
4	A	105	0	0	4	0
4	B	129	0	0	2	0
4	C	145	0	0	1	0

Continued on next page...

Continued from previous page...

Mol	Chain	Non-H	H(model)	H(added)	Clashes	Symm-Clashes
4	D	30	0	0	1	0
4	E	58	0	0	0	0
4	F	39	0	0	1	0
All	All	12018	0	11662	57	0

The all-atom clashscore is defined as the number of clashes found per 1000 atoms (including hydrogen atoms). The all-atom clashscore for this structure is 2.

The worst 5 of 57 close contacts within the same asymmetric unit are listed below, sorted by their clash magnitude.

Atom-1	Atom-2	Interatomic distance (Å)	Clash overlap (Å)
1:D:53:ALA:O	1:D:202:ARG:NH1	1.88	1.05
1:A:76:GLN:HG3	4:A:462:HOH:O	1.70	0.91
1:A:128:THR:O	1:A:130:THR:HB	1.86	0.75
4:A:474:HOH:O	1:C:184:ARG:HD2	1.90	0.71
1:D:83:LEU:HD13	1:D:202:ARG:NH1	2.13	0.64

There are no symmetry-related clashes.

5.3 Torsion angles [i](#)

5.3.1 Protein backbone [i](#)

In the following table, the Percentiles column shows the percent Ramachandran outliers of the chain as a percentile score with respect to all X-ray entries followed by that with respect to entries of similar resolution.

The Analysed column shows the number of residues for which the backbone conformation was analysed, and the total number of residues.

Mol	Chain	Analysed	Favoured	Allowed	Outliers	Percentiles	
1	A	251/277 (91%)	249 (99%)	2 (1%)	0	100	100
1	B	260/277 (94%)	259 (100%)	1 (0%)	0	100	100
1	C	246/277 (89%)	242 (98%)	4 (2%)	0	100	100
1	D	241/277 (87%)	240 (100%)	1 (0%)	0	100	100
1	E	263/277 (95%)	261 (99%)	2 (1%)	0	100	100
1	F	251/277 (91%)	249 (99%)	2 (1%)	0	100	100
All	All	1512/1662 (91%)	1500 (99%)	12 (1%)	0	100	100

There are no Ramachandran outliers to report.

5.3.2 Protein sidechains [i](#)

In the following table, the Percentiles column shows the percent sidechain outliers of the chain as a percentile score with respect to all X-ray entries followed by that with respect to entries of similar resolution.

The Analysed column shows the number of residues for which the sidechain conformation was analysed, and the total number of residues.

Mol	Chain	Analysed	Rotameric	Outliers	Percentiles	
1	A	200/223 (90%)	197 (98%)	3 (2%)	65	43
1	B	207/223 (93%)	204 (99%)	3 (1%)	67	46
1	C	200/223 (90%)	199 (100%)	1 (0%)	88	80
1	D	189/223 (85%)	185 (98%)	4 (2%)	53	27
1	E	213/223 (96%)	210 (99%)	3 (1%)	67	46
1	F	199/223 (89%)	195 (98%)	4 (2%)	55	29
All	All	1208/1338 (90%)	1190 (98%)	18 (2%)	65	43

5 of 18 residues with a non-rotameric sidechain are listed below:

Mol	Chain	Res	Type
1	E	107	LYS
1	E	162	LYS
1	F	39	MET
1	C	39	MET
1	E	39	MET

Some sidechains can be flipped to improve hydrogen bonding and reduce clashes. 5 of 6 such sidechains are listed below:

Mol	Chain	Res	Type
1	E	54	GLN
1	F	255	GLN
1	D	67	ASN
1	E	11	ASN
1	F	67	ASN

5.3.3 RNA [i](#)

There are no RNA molecules in this entry.

5.4 Non-standard residues in protein, DNA, RNA chains [i](#)

There are no non-standard protein/DNA/RNA residues in this entry.

5.5 Carbohydrates [i](#)

There are no carbohydrates in this entry.

5.6 Ligand geometry [i](#)

Of 11 ligands modelled in this entry, 5 are monoatomic - leaving 6 for Mogul analysis.

In the following table, the Counts columns list the number of bonds (or angles) for which Mogul statistics could be retrieved, the number of bonds (or angles) that are observed in the model and the number of bonds (or angles) that are defined in the Chemical Component Dictionary. The Link column lists molecule types, if any, to which the group is linked. The Z score for a bond length (or angle) is the number of standard deviations the observed value is removed from the expected value. A bond length (or angle) with $|Z| > 2$ is considered an outlier worth inspection. RMSZ is the root-mean-square of all Z scores of the bond lengths (or angles).

Mol	Type	Chain	Res	Link	Bond lengths			Bond angles		
					Counts	RMSZ	# Z > 2	Counts	RMSZ	# Z > 2
2	51F	B	301	-	8,9,9	1.31	2 (25%)	6,11,11	2.38	2 (33%)
2	51F	D	302	-	8,9,9	1.04	1 (12%)	6,11,11	0.60	0
2	51F	E	301	-	8,9,9	0.62	0	6,11,11	1.44	0
2	51F	C	301	-	8,9,9	2.60	4 (50%)	6,11,11	4.10	4 (66%)
2	51F	A	301	-	8,9,9	0.81	0	6,11,11	3.94	1 (16%)
2	51F	D	301	-	8,9,9	1.17	1 (12%)	6,11,11	1.12	0

In the following table, the Chirals column lists the number of chiral outliers, the number of chiral centers analysed, the number of these observed in the model and the number defined in the Chemical Component Dictionary. Similar counts are reported in the Torsion and Rings columns. '-' means no outliers of that kind were identified.

Mol	Type	Chain	Res	Link	Chirals	Torsions	Rings
2	51F	B	301	-	-	0/3/3/3	0/1/1/1
2	51F	D	302	-	-	0/3/3/3	0/1/1/1
2	51F	E	301	-	-	0/3/3/3	0/1/1/1
2	51F	C	301	-	-	0/3/3/3	0/1/1/1
2	51F	A	301	-	-	0/3/3/3	0/1/1/1
2	51F	D	301	-	-	0/3/3/3	0/1/1/1

The worst 5 of 8 bond length outliers are listed below:

Mol	Chain	Res	Type	Atoms	Z	Observed(Å)	Ideal(Å)
2	C	301	51F	CAF-NAI	4.91	1.56	1.48
2	C	301	51F	CAD-NAI	-4.14	1.32	1.38
2	D	301	51F	CAD-NAI	-2.90	1.34	1.38
2	D	302	51F	CAD-NAI	-2.82	1.34	1.38
2	B	301	51F	CAF-NAI	2.28	1.51	1.48

The worst 5 of 7 bond angle outliers are listed below:

Mol	Chain	Res	Type	Atoms	Z	Observed(°)	Ideal(°)
2	A	301	51F	CAD-NAI-CAH	-9.45	100.00	108.69
2	C	301	51F	CAD-NAI-CAH	8.26	116.29	108.69
2	B	301	51F	CAD-NAI-CAH	-4.78	104.29	108.69
2	C	301	51F	CAA-CAH-NAG	4.42	134.41	121.77
2	C	301	51F	CAD-CAC-NAG	-2.76	102.42	109.38

There are no chirality outliers.

There are no torsion outliers.

There are no ring outliers.

No monomer is involved in short contacts.

5.7 Other polymers [i](#)

There are no such residues in this entry.

5.8 Polymer linkage issues [i](#)

There are no chain breaks in this entry.

6 Fit of model and data [i](#)

6.1 Protein, DNA and RNA chains [i](#)

In the following table, the column labelled ‘#RSRZ> 2’ contains the number (and percentage) of RSRZ outliers, followed by percent RSRZ outliers for the chain as percentile scores relative to all X-ray entries and entries of similar resolution. The OWAB column contains the minimum, median, 95th percentile and maximum values of the occupancy-weighted average B-factor per residue. The column labelled ‘Q< 0.9’ lists the number of (and percentage) of residues with an average occupancy less than 0.9.

Mol	Chain	Analysed	<RSRZ>	#RSRZ>2	OWAB(Å ²)	Q<0.9
1	A	255/277 (92%)	-0.13	7 (2%) 54 51	15, 20, 42, 71	14 (5%)
1	B	262/277 (94%)	-0.17	10 (3%) 40 37	14, 18, 34, 69	16 (6%)
1	C	250/277 (90%)	-0.26	2 (0%) 86 86	14, 18, 31, 71	19 (7%)
1	D	245/277 (88%)	0.52	16 (6%) 18 16	24, 43, 67, 85	13 (5%)
1	E	267/277 (96%)	0.12	15 (5%) 24 21	18, 30, 54, 67	10 (3%)
1	F	255/277 (92%)	0.29	13 (5%) 28 25	22, 40, 62, 76	8 (3%)
All	All	1534/1662 (92%)	0.06	63 (4%) 37 33	14, 27, 58, 85	80 (5%)

The worst 5 of 63 RSRZ outliers are listed below:

Mol	Chain	Res	Type	RSRZ
1	D	259	ILE	5.9
1	E	130	THR	4.7
1	A	130	THR	4.7
1	F	127	ASP	4.7
1	E	128	THR	4.5

6.2 Non-standard residues in protein, DNA, RNA chains [i](#)

There are no non-standard protein/DNA/RNA residues in this entry.

6.3 Carbohydrates [i](#)

There are no carbohydrates in this entry.

6.4 Ligands [i](#)

In the following table, the Atoms column lists the number of modelled atoms in the group and the number defined in the chemical component dictionary. The B-factors column lists the minimum, median, 95th percentile and maximum values of B factors of atoms in the group. The column labelled 'Q<0.9' lists the number of atoms with occupancy less than 0.9.

Mol	Type	Chain	Res	Atoms	RSCC	RSR	B-factors(Å ²)	Q<0.9
2	51F	E	301	9/9	0.90	0.11	26,30,38,50	0
3	MG	E	302	1/1	0.92	0.09	46,46,46,46	0
3	MG	C	302	1/1	0.94	0.09	45,45,45,45	0
3	MG	B	302	1/1	0.94	0.06	45,45,45,45	0
2	51F	D	302	9/9	0.95	0.10	24,30,42,48	0
2	51F	C	301	9/9	0.95	0.09	11,13,17,29	0
2	51F	B	301	9/9	0.95	0.08	14,16,24,34	0
3	MG	A	302	1/1	0.96	0.06	52,52,52,52	0
2	51F	A	301	9/9	0.97	0.07	11,13,25,34	0
2	51F	D	301	9/9	0.97	0.06	23,25,35,50	0
3	MG	C	303	1/1	0.99	0.06	27,27,27,27	0

6.5 Other polymers [i](#)

There are no such residues in this entry.