



Full wwPDB X-ray Structure Validation Report ⓘ

Aug 2, 2023 – 06:22 AM EDT

PDB ID : 1CGK
Title : CHALCONE SYNTHASE FROM ALFALFA COMPLEXED WITH NARIN-
GENIN
Authors : Ferrer, J.-L.; Jez, J.; Bowman, M.E.; Dixon, R.; Noel, J.P.
Deposited on : 1999-03-25
Resolution : 1.84 Å(reported)

This is a Full wwPDB X-ray Structure Validation Report for a publicly released PDB entry.

We welcome your comments at validation@mail.wwpdb.org

A user guide is available at

<https://www.wwpdb.org/validation/2017/XrayValidationReportHelp>

with specific help available everywhere you see the ⓘ symbol.

The types of validation reports are described at

<http://www.wwpdb.org/validation/2017/FAQs#types>.

The following versions of software and data (see [references ⓘ](#)) were used in the production of this report:

MolProbity : 4.02b-467
Mogul : 1.8.5 (274361), CSD as541be (2020)
Xtrriage (Phenix) : 1.13
EDS : 2.34
buster-report : 1.1.7 (2018)
Percentile statistics : 20191225.v01 (using entries in the PDB archive December 25th 2019)
Refmac : 5.8.0158
CCP4 : 7.0.044 (Gargrove)
Ideal geometry (proteins) : Engh & Huber (2001)
Ideal geometry (DNA, RNA) : Parkinson et al. (1996)
Validation Pipeline (wwPDB-VP) : 2.34

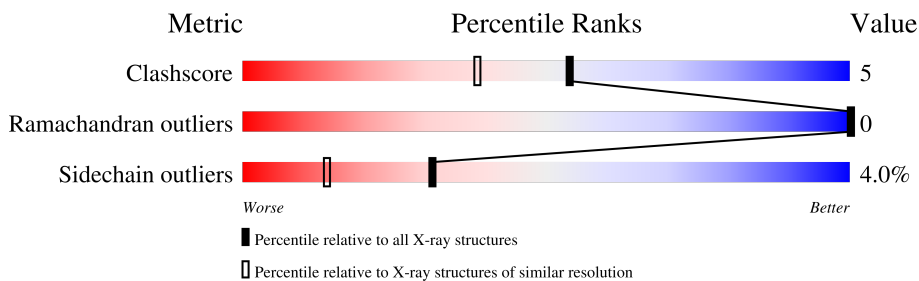
1 Overall quality at a glance i

The following experimental techniques were used to determine the structure:

X-RAY DIFFRACTION

The reported resolution of this entry is 1.84 Å.

Percentile scores (ranging between 0-100) for global validation metrics of the entry are shown in the following graphic. The table shows the number of entries on which the scores are based.



Metric	Whole archive (#Entries)	Similar resolution (#Entries, resolution range(Å))
Clashscore	141614	4233 (1.86-1.82)
Ramachandran outliers	138981	4185 (1.86-1.82)
Sidechain outliers	138945	4186 (1.86-1.82)

The table below summarises the geometric issues observed across the polymeric chains and their fit to the electron density. The red, orange, yellow and green segments of the lower bar indicate the fraction of residues that contain outliers for ≥ 3 , 2, 1 and 0 types of geometric quality criteria respectively. A grey segment represents the fraction of residues that are not modelled. The numeric value for each fraction is indicated below the corresponding segment, with a dot representing fractions $\leq 5\%$

Mol	Chain	Length	Quality of chain
1	A	389	 81% 16% ..

2 Entry composition [i](#)

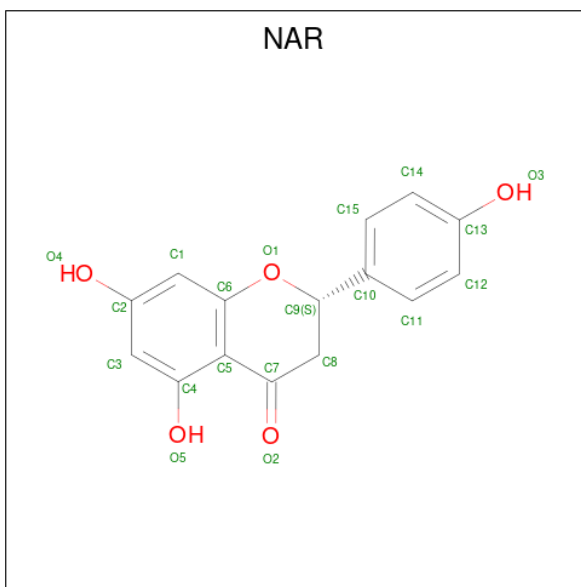
There are 3 unique types of molecules in this entry. The entry contains 3484 atoms, of which 0 are hydrogens and 0 are deuteriums.

In the tables below, the ZeroOcc column contains the number of atoms modelled with zero occupancy, the AltConf column contains the number of residues with at least one atom in alternate conformation and the Trace column contains the number of residues modelled with at most 2 atoms.

- Molecule 1 is a protein called PROTEIN (CHALCONE SYNTHASE).

Mol	Chain	Residues	Atoms					ZeroOcc	AltConf	Trace
			Total	C	N	O	S			
1	A	387	3104	1964	525	596	19	0	15	0

- Molecule 2 is NARINGENIN (three-letter code: NAR) (formula: C₁₅H₁₂O₅).



Mol	Chain	Residues	Atoms			ZeroOcc	AltConf
			Total	C	O		
2	A	1	20	15	5	0	0

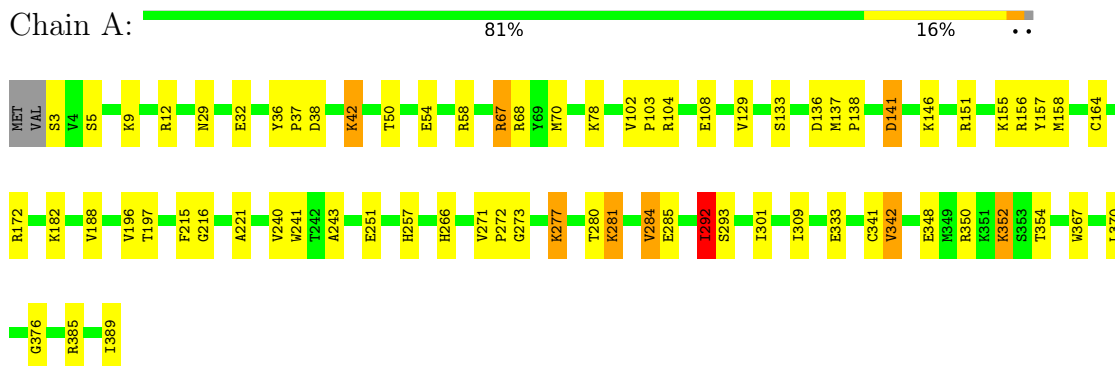
- Molecule 3 is water.

Mol	Chain	Residues	Atoms		ZeroOcc	AltConf
3	A	360	Total	O	0	0
			360	360		

3 Residue-property plots [i](#)

These plots are drawn for all protein, RNA, DNA and oligosaccharide chains in the entry. The first graphic for a chain summarises the proportions of the various outlier classes displayed in the second graphic. The second graphic shows the sequence view annotated by issues in geometry. Residues are color-coded according to the number of geometric quality criteria for which they contain at least one outlier: green = 0, yellow = 1, orange = 2 and red = 3 or more. Stretches of 2 or more consecutive residues without any outlier are shown as a green connector. Residues present in the sample, but not in the model, are shown in grey.

- Molecule 1: PROTEIN (CHALCONE SYNTHASE)



4 Data and refinement statistics i

Property	Value	Source
Space group	P 32 2 1	Depositor
Cell constants a, b, c, α , β , γ	97.92Å 97.92Å 65.19Å 90.00° 90.00° 120.00°	Depositor
Resolution (Å)	84.50 – 1.84 22.92 – 1.85	Depositor EDS
% Data completeness (in resolution range)	85.5 (84.50-1.84) 86.7 (22.92-1.85)	Depositor EDS
R_{merge}	(Not available)	Depositor
R_{sym}	0.04	Depositor
$\langle I/\sigma(I) \rangle$ ¹	6.16 (at 1.85Å)	Xtrriage
Refinement program	REFMAC	Depositor
R, R_{free}	0.161 , 0.225 0.303 , (Not available)	Depositor DCC
R_{free} test set	No test flags present.	wwPDB-VP
Wilson B-factor (Å ²)	16.4	Xtrriage
Anisotropy	0.057	Xtrriage
Bulk solvent k_{sol} (e/Å ³), B_{sol} (Å ²)	0.34 , 53.6	EDS
L-test for twinning ²	$\langle L \rangle = 0.50$, $\langle L^2 \rangle = 0.34$	Xtrriage
Estimated twinning fraction	0.033 for -h,-k,l	Xtrriage
F_o, F_c correlation	0.86	EDS
Total number of atoms	3484	wwPDB-VP
Average B, all atoms (Å ²)	20.0	wwPDB-VP

Xtrriage's analysis on translational NCS is as follows: *The largest off-origin peak in the Patterson function is 5.40% of the height of the origin peak. No significant pseudotranslation is detected.*

¹Intensities estimated from amplitudes.

²Theoretical values of $\langle |L| \rangle$, $\langle L^2 \rangle$ for acentric reflections are 0.5, 0.333 respectively for untwinned datasets, and 0.375, 0.2 for perfectly twinned datasets.

5 Model quality i

5.1 Standard geometry i

Bond lengths and bond angles in the following residue types are not validated in this section: NAR

The Z score for a bond length (or angle) is the number of standard deviations the observed value is removed from the expected value. A bond length (or angle) with $|Z| > 5$ is considered an outlier worth inspection. RMSZ is the root-mean-square of all Z scores of the bond lengths (or angles).

Mol	Chain	Bond lengths		Bond angles	
		RMSZ	# Z >5	RMSZ	# Z >5
1	A	0.64	0/3161	1.28	24/4275 (0.6%)

Chiral center outliers are detected by calculating the chiral volume of a chiral center and verifying if the center is modelled as a planar moiety or with the opposite hand. A planarity outlier is detected by checking planarity of atoms in a peptide group, atoms in a mainchain group or atoms of a sidechain that are expected to be planar.

Mol	Chain	#Chirality outliers	#Planarity outliers
1	A	0	4

There are no bond length outliers.

All (24) bond angle outliers are listed below:

Mol	Chain	Res	Type	Atoms	Z	Observed(°)	Ideal(°)
1	A	67	ARG	CD-NE-CZ	17.08	147.51	123.60
1	A	67	ARG	NE-CZ-NH1	13.06	126.83	120.30
1	A	376	GLY	O-C-N	-9.27	107.87	122.70
1	A	376	GLY	CA-C-N	8.86	136.69	117.20
1	A	12	ARG	NE-CZ-NH1	-8.40	116.10	120.30
1	A	156	ARG	NE-CZ-NH2	7.84	124.22	120.30
1	A	342	VAL	N-CA-CB	-7.76	94.43	111.50
1	A	38	ASP	CB-CG-OD1	7.45	125.00	118.30
1	A	172	ARG	NE-CZ-NH1	6.82	123.71	120.30
1	A	136	ASP	CB-CG-OD1	6.78	124.40	118.30
1	A	342	VAL	CA-CB-CG1	6.70	120.95	110.90
1	A	342	VAL	CB-CA-C	6.40	123.55	111.40
1	A	138	PRO	N-CA-CB	6.24	110.79	103.30
1	A	389	ILE	CA-CB-CG2	6.14	123.17	110.90
1	A	389	ILE	CB-CA-C	5.98	123.56	111.60
1	A	157	TYR	CB-CG-CD1	-5.82	117.51	121.00

Continued on next page...

Continued from previous page...

Mol	Chain	Res	Type	Atoms	Z	Observed(°)	Ideal(°)
1	A	141	ASP	CB-CG-OD1	5.67	123.41	118.30
1	A	137	MET	CG-SD-CE	-5.55	91.32	100.20
1	A	12	ARG	NH1-CZ-NH2	5.31	125.24	119.40
1	A	385	ARG	CD-NE-CZ	5.28	130.99	123.60
1	A	292	ILE	CA-CB-CG2	5.28	121.46	110.90
1	A	68	ARG	NE-CZ-NH2	-5.14	117.73	120.30
1	A	137	MET	CA-C-O	-5.13	109.32	120.10
1	A	58	ARG	CD-NE-CZ	5.00	130.60	123.60

There are no chirality outliers.

All (4) planarity outliers are listed below:

Mol	Chain	Res	Type	Group
1	A	32[B]	GLU	Mainchain
1	A	333[B]	GLU	Mainchain
1	A	354[B]	THR	Mainchain
1	A	42[B]	LYS	Mainchain

5.2 Too-close contacts [i](#)

In the following table, the Non-H and H(model) columns list the number of non-hydrogen atoms and hydrogen atoms in the chain respectively. The H(added) column lists the number of hydrogen atoms added and optimized by MolProbity. The Clashes column lists the number of clashes within the asymmetric unit, whereas Symm-Clashes lists symmetry-related clashes.

Mol	Chain	Non-H	H(model)	H(added)	Clashes	Symm-Clashes
1	A	3104	0	3117	33	4
2	A	20	0	10	2	0
3	A	360	0	0	12	8
All	All	3484	0	3127	33	9

The all-atom clashscore is defined as the number of clashes found per 1000 atoms (including hydrogen atoms). The all-atom clashscore for this structure is 5.

All (33) close contacts within the same asymmetric unit are listed below, sorted by their clash magnitude.

Atom-1	Atom-2	Interatomic distance (Å)	Clash overlap (Å)
1:A:301:ILE:HG21	3:A:736:HOH:O	1.69	0.93
1:A:370:LEU:CD1	3:A:736:HOH:O	2.43	0.67

Continued on next page...

Continued from previous page...

Atom-1	Atom-2	Interatomic distance (Å)	Clash overlap (Å)
1:A:241:TRP:CH2	1:A:285:GLU:HG2	2.34	0.63
1:A:257:HIS:HB2	3:A:692:HOH:O	2.05	0.57
1:A:348:GLU:OE2	1:A:352:LYS:HD3	2.06	0.55
1:A:102:VAL:HB	1:A:103:PRO:HD3	1.89	0.55
1:A:104:ARG:NH1	1:A:108[A]:GLU:OE2	2.40	0.55
1:A:70:MET:HG2	3:A:727:HOH:O	2.08	0.54
1:A:266:HIS:CE1	3:A:720:HOH:O	2.61	0.53
1:A:50:THR:O	1:A:54:GLU:HG3	2.11	0.50
1:A:370:LEU:HD11	3:A:736:HOH:O	2.06	0.49
1:A:273:GLY:O	1:A:277:LYS:HG3	2.11	0.49
1:A:271:VAL:HB	1:A:272:PRO:HD3	1.94	0.49
1:A:164:CYS:SG	2:A:390:NAR:H11	2.53	0.49
1:A:182:LYS:HD3	3:A:520:HOH:O	2.12	0.49
1:A:292:ILE:HD12	1:A:293:SER:N	2.27	0.48
1:A:215:PHE:CD1	2:A:390:NAR:H111	2.49	0.47
1:A:281:LYS:HB3	3:A:567:HOH:O	2.15	0.46
1:A:151:ARG:HH11	1:A:151:ARG:HD2	1.60	0.45
1:A:36:TYR:N	1:A:37:PRO:CD	2.80	0.45
1:A:240:VAL:HG21	1:A:367:TRP:HZ3	1.83	0.44
1:A:29:ASN:HB3	1:A:70:MET:O	2.17	0.44
1:A:241:TRP:HH2	1:A:285:GLU:HG2	1.82	0.44
1:A:129:VAL:HG21	1:A:141:ASP:HA	2.00	0.44
1:A:280:THR:O	1:A:284:VAL:HG13	2.18	0.44
1:A:309:ILE:HG13	3:A:740:HOH:O	2.18	0.42
1:A:257:HIS:N	3:A:720:HOH:O	2.52	0.42
1:A:182:LYS:HB3	1:A:182:LYS:HE3	1.75	0.42
1:A:188:VAL:O	1:A:221:ALA:HA	2.19	0.42
1:A:241:TRP:CH2	1:A:243:ALA:HB2	2.55	0.42
1:A:216:GLY:HA2	3:A:727:HOH:O	2.19	0.41
1:A:133:SER:HA	1:A:196:VAL:HG11	2.03	0.41
1:A:197:THR:HG23	3:A:476:HOH:O	2.21	0.40

All (9) symmetry-related close contacts are listed below. The label for Atom-2 includes the symmetry operator and encoded unit-cell translations to be applied.

Atom-1	Atom-2	Interatomic distance (Å)	Clash overlap (Å)
1:A:9[A]:LYS:CG	3:A:693:HOH:O[4_557]	1.82	0.38
1:A:146:LYS:NZ	1:A:251:GLU:OE2[4_557]	1.86	0.34
3:A:668:HOH:O	3:A:715:HOH:O[4_557]	1.99	0.21
3:A:596:HOH:O	3:A:626:HOH:O[4_557]	2.02	0.18

Continued on next page...

Continued from previous page...

Atom-1	Atom-2	Interatomic distance (Å)	Clash overlap (Å)
1:A:155:LYS:NZ	3:A:556:HOH:O[4_557]	2.13	0.07
3:A:409:HOH:O	3:A:441:HOH:O[4_557]	2.15	0.05
3:A:462:HOH:O	3:A:474:HOH:O[5_666]	2.15	0.05
3:A:459:HOH:O	3:A:660:HOH:O[4_556]	2.16	0.04
1:A:158:MET:N	3:A:435:HOH:O[4_557]	2.19	0.01

5.3 Torsion angles [i](#)

5.3.1 Protein backbone [i](#)

In the following table, the Percentiles column shows the percent Ramachandran outliers of the chain as a percentile score with respect to all X-ray entries followed by that with respect to entries of similar resolution.

The Analysed column shows the number of residues for which the backbone conformation was analysed, and the total number of residues.

Mol	Chain	Analysed	Favoured	Allowed	Outliers	Percentiles
1	A	400/389 (103%)	389 (97%)	11 (3%)	0	100 100

There are no Ramachandran outliers to report.

5.3.2 Protein sidechains [i](#)

In the following table, the Percentiles column shows the percent sidechain outliers of the chain as a percentile score with respect to all X-ray entries followed by that with respect to entries of similar resolution.

The Analysed column shows the number of residues for which the sidechain conformation was analysed, and the total number of residues.

Mol	Chain	Analysed	Rotameric	Outliers	Percentiles
1	A	338/325 (104%)	323 (96%)	15 (4%)	28 11

All (15) residues with a non-rotameric sidechain are listed below:

Mol	Chain	Res	Type
1	A	3	SER
1	A	5[A]	SER
1	A	5[B]	SER

Continued on next page...

Continued from previous page...

Mol	Chain	Res	Type
1	A	42[A]	LYS
1	A	42[B]	LYS
1	A	67	ARG
1	A	78	LYS
1	A	277	LYS
1	A	281	LYS
1	A	284	VAL
1	A	292	ILE
1	A	341	CYS
1	A	342	VAL
1	A	350	ARG
1	A	352	LYS

Sometimes sidechains can be flipped to improve hydrogen bonding and reduce clashes. All (1) such sidechains are listed below:

Mol	Chain	Res	Type
1	A	205	HIS

5.3.3 RNA [i](#)

There are no RNA molecules in this entry.

5.4 Non-standard residues in protein, DNA, RNA chains [i](#)

There are no non-standard protein/DNA/RNA residues in this entry.

5.5 Carbohydrates [i](#)

There are no monosaccharides in this entry.

5.6 Ligand geometry [i](#)

1 ligand is modelled in this entry.

In the following table, the Counts columns list the number of bonds (or angles) for which Mogul statistics could be retrieved, the number of bonds (or angles) that are observed in the model and the number of bonds (or angles) that are defined in the Chemical Component Dictionary. The Link column lists molecule types, if any, to which the group is linked. The Z score for a bond length (or angle) is the number of standard deviations the observed value is removed from the

expected value. A bond length (or angle) with $|Z| > 2$ is considered an outlier worth inspection. RMSZ is the root-mean-square of all Z scores of the bond lengths (or angles).

Mol	Type	Chain	Res	Link	Bond lengths			Bond angles		
					Counts	RMSZ	# $ Z > 2$	Counts	RMSZ	# $ Z > 2$
2	NAR	A	390	-	22,22,22	1.25	2 (9%)	32,32,32	2.69	15 (46%)

In the following table, the Chirals column lists the number of chiral outliers, the number of chiral centers analysed, the number of these observed in the model and the number defined in the Chemical Component Dictionary. Similar counts are reported in the Torsion and Rings columns. '-' means no outliers of that kind were identified.

Mol	Type	Chain	Res	Link	Chirals	Torsions	Rings
2	NAR	A	390	-	-	0/4/16/16	0/3/3/3

All (2) bond length outliers are listed below:

Mol	Chain	Res	Type	Atoms	Z	Observed(Å)	Ideal(Å)
2	A	390	NAR	C10-C9	3.44	1.57	1.51
2	A	390	NAR	C12-C11	2.12	1.42	1.38

All (15) bond angle outliers are listed below:

Mol	Chain	Res	Type	Atoms	Z	Observed(°)	Ideal(°)
2	A	390	NAR	C14-C15-C10	-6.68	114.47	121.20
2	A	390	NAR	C4-C5-C6	5.70	123.14	117.35
2	A	390	NAR	C3-C4-C5	-5.16	114.94	120.93
2	A	390	NAR	O1-C6-C1	4.06	122.77	116.38
2	A	390	NAR	O4-C2-C3	-3.78	110.01	119.84
2	A	390	NAR	C3-C2-C1	-3.26	115.93	120.43
2	A	390	NAR	C6-C5-C7	-3.15	117.47	120.33
2	A	390	NAR	C15-C10-C9	-3.10	113.96	120.63
2	A	390	NAR	C11-C10-C9	3.06	127.20	120.63
2	A	390	NAR	C4-C5-C7	-2.88	116.77	120.81
2	A	390	NAR	C1-C6-C5	-2.79	116.95	121.86
2	A	390	NAR	O4-C2-C1	2.78	127.08	119.84
2	A	390	NAR	C11-C12-C13	-2.68	116.93	119.88
2	A	390	NAR	C14-C13-C12	-2.41	115.70	119.77
2	A	390	NAR	C4-C3-C2	2.26	121.75	119.70

There are no chirality outliers.

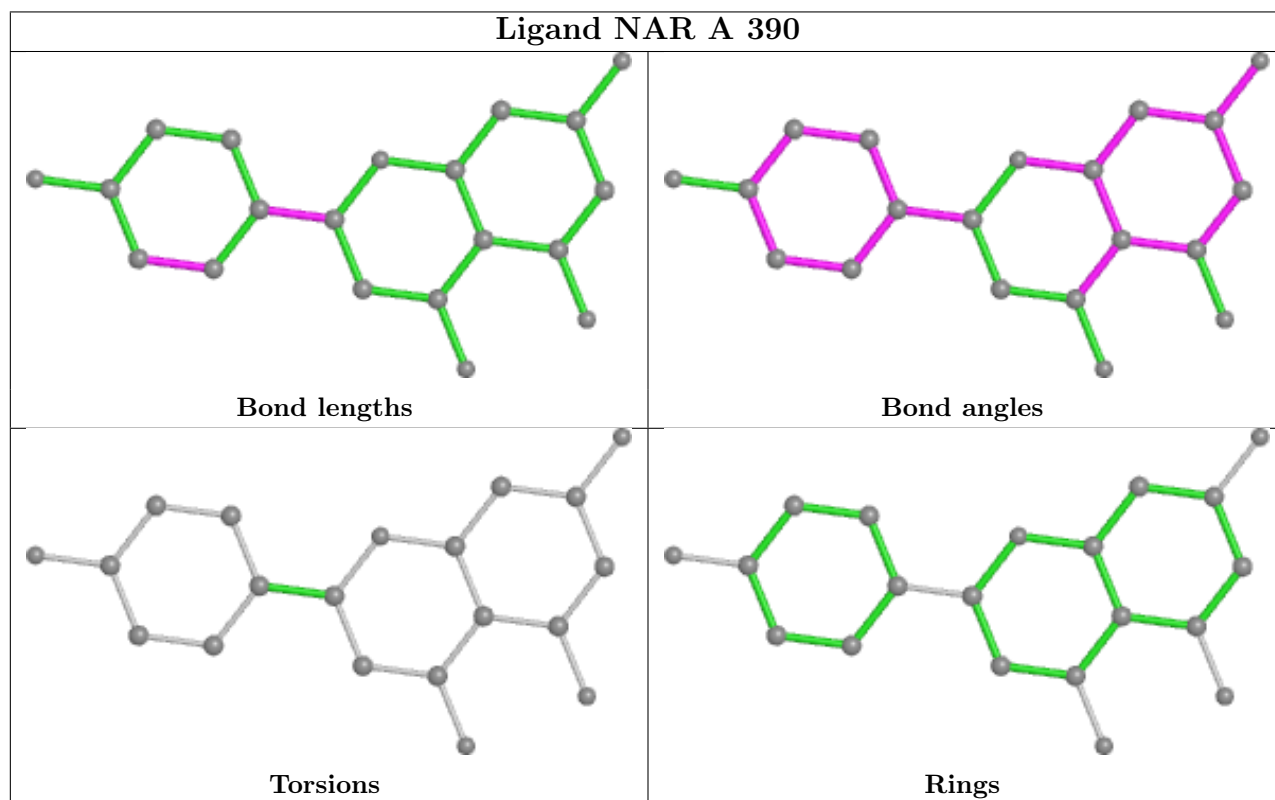
There are no torsion outliers.

There are no ring outliers.

1 monomer is involved in 2 short contacts:

Mol	Chain	Res	Type	Clashes	Symm-Clashes
2	A	390	NAR	2	0

The following is a two-dimensional graphical depiction of Mogul quality analysis of bond lengths, bond angles, torsion angles, and ring geometry for all instances of the Ligand of Interest. In addition, ligands with molecular weight > 250 and outliers as shown on the validation Tables will also be included. For torsion angles, if less than 5% of the Mogul distribution of torsion angles is within 10 degrees of the torsion angle in question, then that torsion angle is considered an outlier. Any bond that is central to one or more torsion angles identified as an outlier by Mogul will be highlighted in the graph. For rings, the root-mean-square deviation (RMSD) between the ring in question and similar rings identified by Mogul is calculated over all ring torsion angles. If the average RMSD is greater than 60 degrees and the minimal RMSD between the ring in question and any Mogul-identified rings is also greater than 60 degrees, then that ring is considered an outlier. The outliers are highlighted in purple. The color gray indicates Mogul did not find sufficient equivalents in the CSD to analyse the geometry.



5.7 Other polymers [\(i\)](#)

There are no such residues in this entry.

5.8 Polymer linkage issues

There are no chain breaks in this entry.

6 Fit of model and data [i](#)

6.1 Protein, DNA and RNA chains [i](#)

Unable to reproduce the depositors R factor - this section is therefore empty.

6.2 Non-standard residues in protein, DNA, RNA chains [i](#)

Unable to reproduce the depositors R factor - this section is therefore empty.

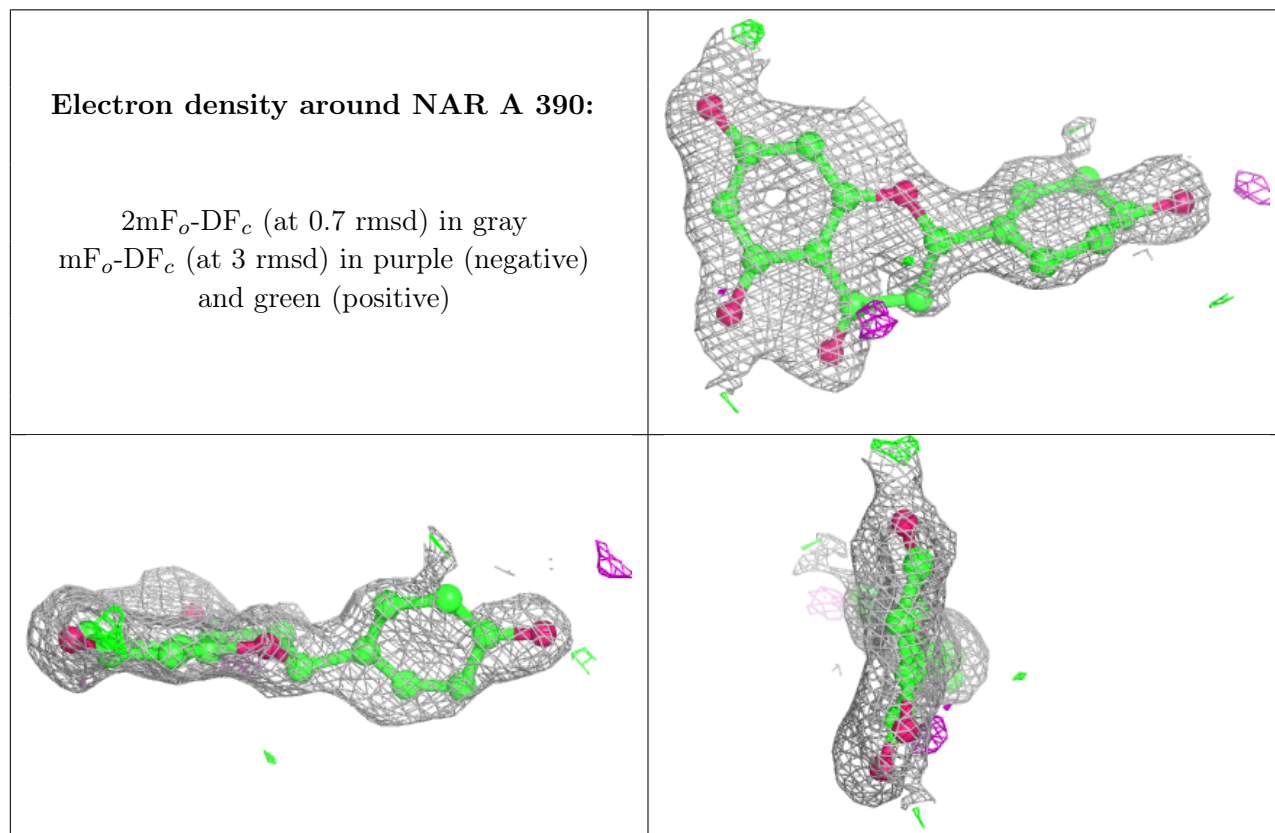
6.3 Carbohydrates [i](#)

Unable to reproduce the depositors R factor - this section is therefore empty.

6.4 Ligands [i](#)

Unable to reproduce the depositors R factor - this section is therefore empty.

The following is a graphical depiction of the model fit to experimental electron density of all instances of the Ligand of Interest. In addition, ligands with molecular weight > 250 and outliers as shown on the geometry validation Tables will also be included. Each fit is shown from different orientation to approximate a three-dimensional view.



6.5 Other polymers

Unable to reproduce the depositors R factor - this section is therefore empty.