



# Full wwPDB X-ray Structure Validation Report ⓘ

Dec 4, 2023 – 03:48 am GMT

PDB ID : 2C5H  
Title : X-ray crystal structure of 5'-fluorodeoxyadenosine synthase from *Streptomyces cattleya* complexed with 2'-deoxy-adenosine  
Authors : McEwan, A.R.; Deng, H.; McGlinchey, R.P.; Robinson, D.R.; O'Hagan, D.; Naismith, J.H.; Spencer, J.  
Deposited on : 2005-10-27  
Resolution : 2.70 Å(reported)

This is a Full wwPDB X-ray Structure Validation Report for a publicly released PDB entry.

We welcome your comments at [validation@mail.wwpdb.org](mailto:validation@mail.wwpdb.org)

A user guide is available at

<https://www.wwpdb.org/validation/2017/XrayValidationReportHelp>

with specific help available everywhere you see the ⓘ symbol.

The types of validation reports are described at

<http://www.wwpdb.org/validation/2017/FAQs#types>.

---

The following versions of software and data (see [references ⓘ](#)) were used in the production of this report:

MolProbity : 4.02b-467  
Mogul : 1.8.4, CSD as541be (2020)  
Xtriage (Phenix) : 1.13  
EDS : 2.36  
buster-report : 1.1.7 (2018)  
Percentile statistics : 20191225.v01 (using entries in the PDB archive December 25th 2019)  
Refmac : 5.8.0158  
CCP4 : 7.0.044 (Gargrove)  
Ideal geometry (proteins) : Engh & Huber (2001)  
Ideal geometry (DNA, RNA) : Parkinson et al. (1996)  
Validation Pipeline (wwPDB-VP) : 2.36

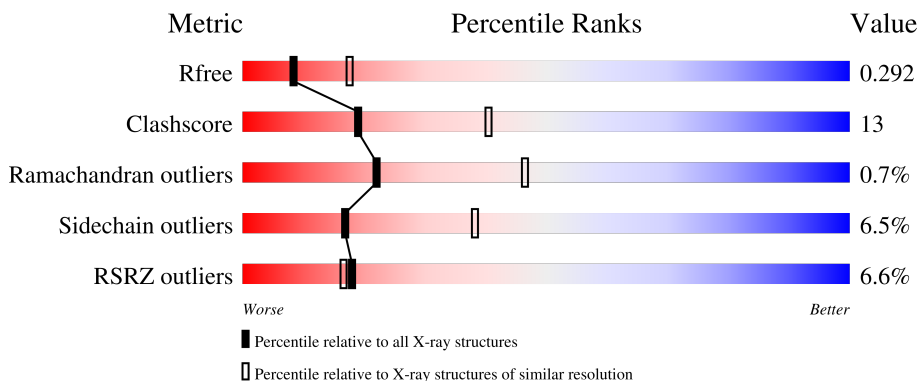
# 1 Overall quality at a glance

The following experimental techniques were used to determine the structure:

*X-RAY DIFFRACTION*

The reported resolution of this entry is 2.70 Å.

Percentile scores (ranging between 0-100) for global validation metrics of the entry are shown in the following graphic. The table shows the number of entries on which the scores are based.



Metric	Whole archive (#Entries)	Similar resolution (#Entries, resolution range(Å))
$R_{free}$	130704	2808 (2.70-2.70)
Clashscore	141614	3122 (2.70-2.70)
Ramachandran outliers	138981	3069 (2.70-2.70)
Sidechain outliers	138945	3069 (2.70-2.70)
RSRZ outliers	127900	2737 (2.70-2.70)

The table below summarises the geometric issues observed across the polymeric chains and their fit to the electron density. The red, orange, yellow and green segments of the lower bar indicate the fraction of residues that contain outliers for  $\geq 3$ , 2, 1 and 0 types of geometric quality criteria respectively. A grey segment represents the fraction of residues that are not modelled. The numeric value for each fraction is indicated below the corresponding segment, with a dot representing fractions  $\leq 5\%$ . The upper red bar (where present) indicates the fraction of residues that have poor fit to the electron density. The numeric value is given above the bar.

Mol	Chain	Length	Quality of chain
1	A	299	
1	B	299	
1	C	299	

## 2 Entry composition [i](#)

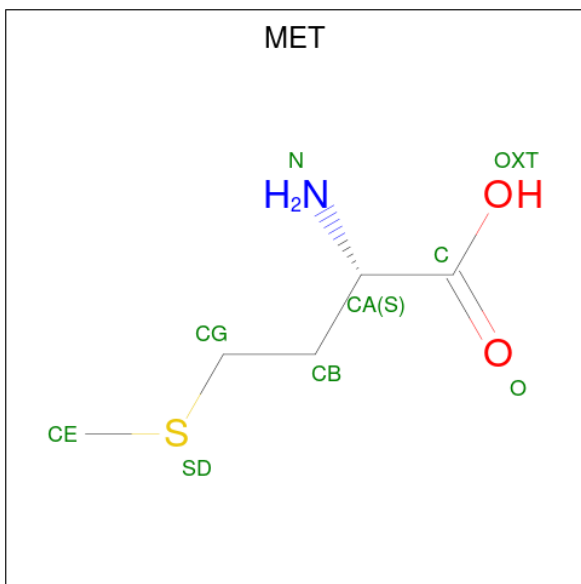
There are 5 unique types of molecules in this entry. The entry contains 6829 atoms, of which 0 are hydrogens and 0 are deuteriums.

In the tables below, the ZeroOcc column contains the number of atoms modelled with zero occupancy, the AltConf column contains the number of residues with at least one atom in alternate conformation and the Trace column contains the number of residues modelled with at most 2 atoms.

- Molecule 1 is a protein called 5'-FLUORO-5'-DEOXYADENOSINE SYNTHASE.

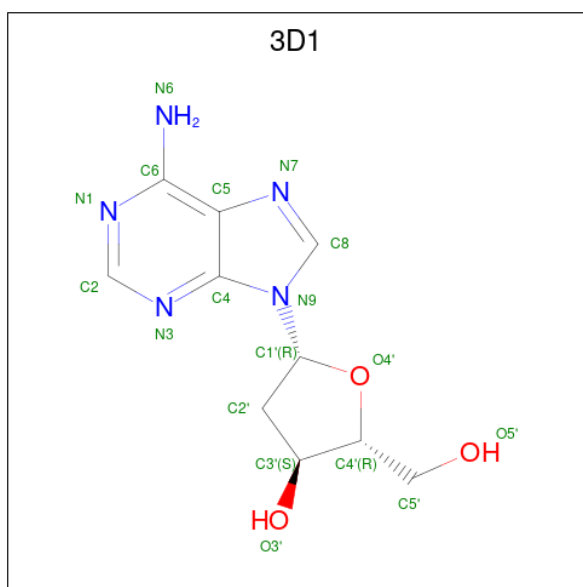
Mol	Chain	Residues	Atoms					ZeroOcc	AltConf	Trace
			Total	C	N	O	S			
1	A	291	Total	C	N	O	S	0	0	0
			2220	1410	378	424	8			
1	B	291	Total	C	N	O	S	0	0	0
			2220	1410	378	424	8			
1	C	291	Total	C	N	O	S	0	0	0
			2220	1410	378	424	8			

- Molecule 2 is METHIONINE (three-letter code: MET) (formula: C<sub>5</sub>H<sub>11</sub>NO<sub>2</sub>S).



Mol	Chain	Residues	Atoms					ZeroOcc	AltConf
			Total	C	N	O	S		
2	A	1	Total	C	N	O	S	0	0
			9	5	1	2	1		
2	B	1	Total	C	N	O	S	0	0
			9	5	1	2	1		

- Molecule 3 is (2R,3S,5R)-5-(6-amino-9H-purin-9-yl)-tetrahydro-2-(hydroxymethyl)furan-3-ol (three-letter code: 3D1) (formula: C<sub>10</sub>H<sub>13</sub>N<sub>5</sub>O<sub>3</sub>).



Mol	Chain	Residues	Atoms				ZeroOcc	AltConf
			Total	C	N	O		
3	A	1	18	10	5	3	0	0
3	B	1	18	10	5	3	0	0
3	C	1	18	10	5	3	0	0

- Molecule 4 is CHLORIDE ION (three-letter code: CL) (formula: Cl).

Mol	Chain	Residues	Atoms		ZeroOcc	AltConf
			Total	Cl		
4	A	1	1	1	0	0

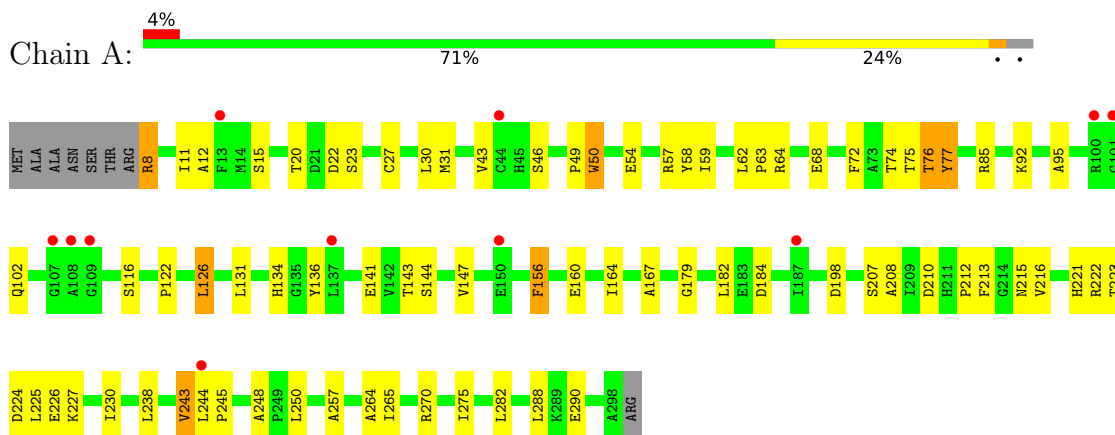
- Molecule 5 is water.

Mol	Chain	Residues	Atoms		ZeroOcc	AltConf
			Total	O		
5	A	33	33	33	0	0
5	B	36	36	36	0	0
5	C	27	27	27	0	0

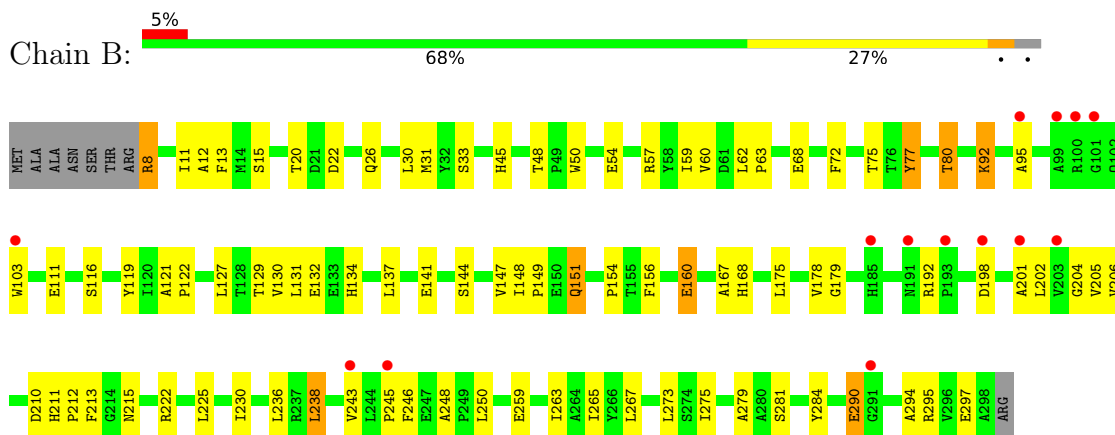
### 3 Residue-property plots [i](#)

These plots are drawn for all protein, RNA, DNA and oligosaccharide chains in the entry. The first graphic for a chain summarises the proportions of the various outlier classes displayed in the second graphic. The second graphic shows the sequence view annotated by issues in geometry and electron density. Residues are color-coded according to the number of geometric quality criteria for which they contain at least one outlier: green = 0, yellow = 1, orange = 2 and red = 3 or more. A red dot above a residue indicates a poor fit to the electron density ( $RSRZ > 2$ ). Stretches of 2 or more consecutive residues without any outlier are shown as a green connector. Residues present in the sample, but not in the model, are shown in grey.

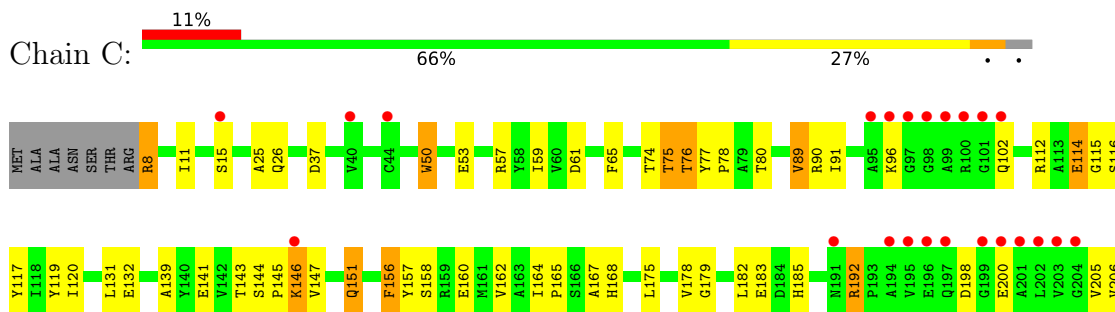
#### • Molecule 1: 5'-FLUORO-5'-DEOXYADENOSINE SYNTHASE

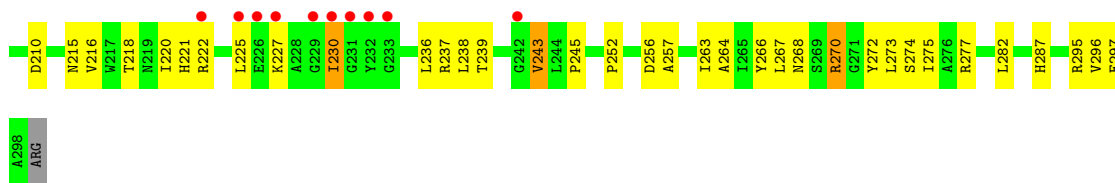


#### • Molecule 1: 5'-FLUORO-5'-DEOXYADENOSINE SYNTHASE



#### • Molecule 1: 5'-FLUORO-5'-DEOXYADENOSINE SYNTHASE





## 4 Data and refinement statistics i

Property	Value	Source
Space group	C 2 2 21	Depositor
Cell constants a, b, c, $\alpha$ , $\beta$ , $\gamma$	74.54Å 126.70Å 181.33Å 90.00° 90.00° 90.00°	Depositor
Resolution (Å)	50.00 – 2.70 37.04 – 2.70	Depositor EDS
% Data completeness (in resolution range)	94.6 (50.00-2.70) 94.6 (37.04-2.70)	Depositor EDS
$R_{merge}$	0.08	Depositor
$R_{sym}$	(Not available)	Depositor
$\langle I/\sigma(I) \rangle$ <sup>1</sup>	2.62 (at 2.68Å)	Xtrriage
Refinement program	REFMAC 5.2.0005	Depositor
R, $R_{free}$	0.228 , 0.293 0.232 , 0.292	Depositor DCC
$R_{free}$ test set	1146 reflections (5.05%)	wwPDB-VP
Wilson B-factor (Å <sup>2</sup> )	48.0	Xtrriage
Anisotropy	0.795	Xtrriage
Bulk solvent $k_{sol}$ (e/Å <sup>3</sup> ), $B_{sol}$ (Å <sup>2</sup> )	0.38 , 26.8	EDS
L-test for twinning <sup>2</sup>	$\langle  L  \rangle = 0.44$ , $\langle L^2 \rangle = 0.27$	Xtrriage
Estimated twinning fraction	0.059 for 1/2*h-1/2*k,-3/2*h-1/2*k,-l 0.059 for 1/2*h+1/2*k,3/2*h-1/2*k,-l	Xtrriage
$F_o, F_c$ correlation	0.92	EDS
Total number of atoms	6829	wwPDB-VP
Average B, all atoms (Å <sup>2</sup> )	10.0	wwPDB-VP

Xtrriage's analysis on translational NCS is as follows: *The largest off-origin peak in the Patterson function is 4.45% of the height of the origin peak. No significant pseudotranslation is detected.*

<sup>1</sup>Intensities estimated from amplitudes.

<sup>2</sup>Theoretical values of  $\langle |L| \rangle$ ,  $\langle L^2 \rangle$  for acentric reflections are 0.5, 0.333 respectively for untwinned datasets, and 0.375, 0.2 for perfectly twinned datasets.

## 5 Model quality [i](#)

### 5.1 Standard geometry [i](#)

Bond lengths and bond angles in the following residue types are not validated in this section: CL, 3D1

The Z score for a bond length (or angle) is the number of standard deviations the observed value is removed from the expected value. A bond length (or angle) with  $|Z| > 5$  is considered an outlier worth inspection. RMSZ is the root-mean-square of all Z scores of the bond lengths (or angles).

Mol	Chain	Bond lengths		Bond angles	
		RMSZ	# Z  >5	RMSZ	# Z  >5
1	A	0.64	0/2276	0.75	1/3106 (0.0%)
1	B	0.65	0/2276	0.76	1/3106 (0.0%)
1	C	0.66	0/2276	0.77	0/3106
All	All	0.65	0/6828	0.76	2/9318 (0.0%)

Chiral center outliers are detected by calculating the chiral volume of a chiral center and verifying if the center is modelled as a planar moiety or with the opposite hand. A planarity outlier is detected by checking planarity of atoms in a peptide group, atoms in a mainchain group or atoms of a sidechain that are expected to be planar.

Mol	Chain	#Chirality outliers	#Planarity outliers
1	C	0	1

There are no bond length outliers.

All (2) bond angle outliers are listed below:

Mol	Chain	Res	Type	Atoms	Z	Observed(°)	Ideal(°)
1	A	238	LEU	CA-CB-CG	5.87	128.81	115.30
1	B	238	LEU	CA-CB-CG	5.50	127.94	115.30

There are no chirality outliers.

All (1) planarity outliers are listed below:

Mol	Chain	Res	Type	Group
1	C	75	THR	Peptide



## 5.2 Too-close contacts

In the following table, the Non-H and H(model) columns list the number of non-hydrogen atoms and hydrogen atoms in the chain respectively. The H(added) column lists the number of hydrogen atoms added and optimized by MolProbity. The Clashes column lists the number of clashes within the asymmetric unit, whereas Symm-Clashes lists symmetry-related clashes.

Mol	Chain	Non-H	H(model)	H(added)	Clashes	Symm-Clashes
1	A	2220	0	2163	51	0
1	B	2220	0	2163	59	0
1	C	2220	0	2163	69	0
2	A	9	0	8	0	0
2	B	9	0	8	5	0
3	A	18	0	13	2	0
3	B	18	0	13	1	0
3	C	18	0	13	0	0
4	A	1	0	0	0	0
5	A	33	0	0	2	0
5	B	36	0	0	0	0
5	C	27	0	0	2	0
All	All	6829	0	6544	173	0

The all-atom clashscore is defined as the number of clashes found per 1000 atoms (including hydrogen atoms). The all-atom clashscore for this structure is 13.

All (173) close contacts within the same asymmetric unit are listed below, sorted by their clash magnitude.

Atom-1	Atom-2	Interatomic distance (Å)	Clash overlap (Å)
1:B:211:HIS:HD1	1:B:284:TYR:HH	1.10	0.95
1:A:210:ASP:HB3	1:A:215:ASN:HB2	1.61	0.81
1:A:243:VAL:O	1:A:245:PRO:HD3	1.82	0.80
1:B:243:VAL:O	1:B:245:PRO:HD3	1.83	0.79
1:C:192:ARG:HB3	1:C:192:ARG:HH11	1.48	0.79
1:C:175:LEU:O	1:C:178:VAL:HG22	1.88	0.73
1:A:141:GLU:HB2	1:A:182:LEU:HD21	1.72	0.72
1:C:183:GLU:OE1	1:C:185:HIS:CE1	2.43	0.71
1:B:202:LEU:O	1:B:295:ARG:HA	1.90	0.71
1:B:92:LYS:HG3	1:B:137:LEU:HD21	1.71	0.71
1:C:183:GLU:OE1	1:C:185:HIS:HE1	1.74	0.71
2:B:1299:MET:HA	2:B:1299:MET:CE	2.23	0.69
1:A:64:ARG:HG2	5:A:2006:HOH:O	1.93	0.69
1:B:175:LEU:O	1:B:178:VAL:HG22	1.93	0.68
1:C:218:THR:HB	1:C:220:ILE:HG13	1.76	0.66

*Continued on next page...*

*Continued from previous page...*

Atom-1	Atom-2	Interatomic distance (Å)	Clash overlap (Å)
1:C:192:ARG:HH11	1:C:192:ARG:CB	2.10	0.65
1:B:22:ASP:CG	1:C:270:ARG:HH22	2.00	0.64
1:B:22:ASP:OD1	1:C:270:ARG:NH2	2.29	0.63
1:B:222:ARG:O	1:B:225:LEU:HB2	1.99	0.62
1:A:136:TYR:OH	1:A:184:ASP:OD1	2.13	0.62
1:B:11:ILE:HD11	1:B:167:ALA:HA	1.81	0.62
1:B:147:VAL:HA	1:B:168:HIS:CD2	2.35	0.61
1:B:149:PRO:HG2	1:B:160:GLU:HB3	1.83	0.60
1:A:15:SER:HA	1:A:75:THR:O	2.01	0.60
1:C:90:ARG:HD3	1:C:115:GLY:O	2.02	0.59
1:B:80:THR:OG1	1:B:154:PRO:O	2.21	0.58
1:A:221:HIS:HD2	1:A:223:THR:OG1	1.87	0.58
1:B:248:ALA:HB3	1:B:265:ILE:HG13	1.85	0.58
1:A:102:GLN:NE2	1:C:151:GLN:O	2.35	0.58
1:C:141:GLU:HG2	1:C:143:THR:HG23	1.85	0.57
1:C:158:SER:O	1:C:162:VAL:HB	2.03	0.57
1:A:275:ILE:HG23	1:A:282:LEU:HD23	1.87	0.57
1:C:243:VAL:O	1:C:245:PRO:HD3	2.05	0.57
1:B:141:GLU:O	1:B:179:GLY:HA3	2.05	0.57
1:C:218:THR:OG1	1:C:273:LEU:O	2.13	0.57
1:B:144:SER:O	1:B:148:ILE:HG12	2.04	0.56
1:B:129:THR:HA	1:B:132:GLU:HG2	1.85	0.56
1:A:244:LEU:HD12	1:A:288:LEU:HD21	1.87	0.56
1:C:141:GLU:CG	1:C:143:THR:HG23	2.35	0.55
1:A:46:SER:HA	5:A:2004:HOH:O	2.04	0.55
1:A:221:HIS:CD2	1:A:223:THR:H	2.24	0.55
1:C:11:ILE:HD11	1:C:167:ALA:HA	1.87	0.55
1:B:238:LEU:O	1:B:246:PHE:HB2	2.06	0.55
1:A:224:ASP:O	1:A:227:LYS:HG2	2.08	0.55
2:B:1299:MET:HA	2:B:1299:MET:HE3	1.88	0.54
1:C:91:ILE:HD11	1:C:117:TYR:HB2	1.89	0.54
3:A:500:3D1:H8	2:B:1299:MET:SD	2.47	0.54
1:B:77:TYR:CD1	1:B:122:PRO:HG3	2.42	0.54
1:C:252:PRO:HD2	1:C:256:ASP:OD2	2.07	0.54
1:A:77:TYR:CD1	1:A:122:PRO:HG3	2.43	0.53
1:B:132:GLU:OE1	1:B:192:ARG:HD3	2.08	0.53
1:A:30:LEU:HD13	1:A:164:ILE:HD11	1.89	0.53
1:C:156:PHE:O	1:C:160:GLU:HG2	2.09	0.53
1:B:68:GLU:HB3	1:B:116:SER:HB3	1.90	0.53
1:B:265:ILE:CG2	1:B:273:LEU:HD11	2.39	0.52
1:B:206:VAL:HG12	1:B:290:GLU:HA	1.90	0.52

*Continued on next page...*

*Continued from previous page...*

Atom-1	Atom-2	Interatomic distance (Å)	Clash overlap (Å)
1:A:54:GLU:OE2	1:A:58:TYR:OH	2.16	0.52
1:B:290:GLU:O	1:B:290:GLU:HG3	2.10	0.52
1:C:238:LEU:HD12	1:C:239:THR:N	2.24	0.52
1:A:223:THR:HA	1:A:226:GLU:HG2	1.93	0.51
1:B:11:ILE:HG21	1:B:31:MET:CE	2.42	0.50
1:C:89:VAL:HG12	1:C:139:ALA:HB2	1.93	0.50
1:C:160:GLU:HA	1:C:164:ILE:HD12	1.93	0.50
1:B:236:LEU:HD11	1:B:250:LEU:HB2	1.92	0.50
1:B:281:SER:HG	1:B:284:TYR:HD2	1.58	0.50
1:B:15:SER:HA	1:B:75:THR:O	2.12	0.50
1:C:164:ILE:HB	1:C:165:PRO:HD3	1.94	0.50
1:B:210:ASP:HB3	1:B:215:ASN:HB2	1.94	0.50
1:C:15:SER:HA	1:C:75:THR:O	2.11	0.50
1:C:89:VAL:HG21	1:C:131:LEU:HD21	1.93	0.49
1:B:201:ALA:HA	1:B:297:GLU:HB3	1.94	0.49
1:C:239:THR:N	1:C:295:ARG:O	2.35	0.49
1:C:277:ARG:HG3	1:C:282:LEU:HB2	1.93	0.49
1:A:57:ARG:NH2	1:A:208:ALA:HB2	2.28	0.49
1:A:68:GLU:HB3	1:A:116:SER:HB3	1.95	0.49
3:A:500:3D1:C2	1:B:279:ALA:H	2.25	0.49
1:B:12:ALA:HB3	1:B:72:PHE:CD1	2.48	0.49
1:B:13:PHE:CD2	1:B:45:HIS:HE1	2.30	0.49
1:C:192:ARG:HH11	1:C:192:ARG:CG	2.26	0.49
1:A:102:GLN:NE2	1:C:151:GLN:HB3	2.28	0.49
1:B:222:ARG:O	1:B:225:LEU:N	2.47	0.48
1:B:265:ILE:HG22	1:B:273:LEU:HD11	1.96	0.48
1:C:218:THR:CB	1:C:220:ILE:HG13	2.43	0.48
1:C:210:ASP:HB3	1:C:215:ASN:HB2	1.96	0.47
1:C:238:LEU:HD12	1:C:239:THR:H	1.79	0.47
1:C:216:VAL:HB	1:C:275:ILE:HG23	1.96	0.47
1:A:27:CYS:O	1:A:31:MET:HG3	2.15	0.47
1:A:160:GLU:HA	1:A:164:ILE:HD12	1.95	0.47
1:B:103:TRP:NE1	1:B:111:GLU:HG3	2.30	0.47
1:A:11:ILE:HD11	1:A:167:ALA:HA	1.97	0.47
1:A:212:PRO:HD2	1:A:213:PHE:CE2	2.49	0.47
1:C:221:HIS:HB2	1:C:272:TYR:CE1	2.50	0.47
1:C:257:ALA:HB2	1:C:264:ALA:HB2	1.97	0.47
1:A:207:SER:O	1:A:290:GLU:OE2	2.32	0.47
1:A:270:ARG:CZ	1:C:26:GLN:HE22	2.27	0.47
1:B:15:SER:O	1:B:45:HIS:HA	2.15	0.46
1:B:127:LEU:O	1:B:131:LEU:HG	2.15	0.46

*Continued on next page...*

*Continued from previous page...*

Atom-1	Atom-2	Interatomic distance (Å)	Clash overlap (Å)
1:C:222:ARG:O	1:C:225:LEU:N	2.47	0.46
1:A:248:ALA:HB3	1:A:265:ILE:HG13	1.98	0.46
2:B:1299:MET:HA	2:B:1299:MET:HE2	1.96	0.46
1:C:114:GLU:H	1:C:114:GLU:HG2	1.48	0.46
1:A:126:LEU:HD12	1:A:126:LEU:O	2.14	0.46
1:A:131:LEU:HD22	1:A:136:TYR:CD2	2.51	0.46
1:B:204:GLY:N	1:B:294:ALA:O	2.39	0.46
1:C:96:LYS:HD3	1:C:102:GLN:HA	1.97	0.46
1:A:12:ALA:HB3	1:A:72:PHE:CD1	2.51	0.45
1:A:141:GLU:O	1:A:179:GLY:HA3	2.16	0.45
1:A:43:VAL:HA	1:C:25:ALA:HB2	1.98	0.45
1:A:275:ILE:HG23	1:A:282:LEU:CD2	2.46	0.45
1:B:212:PRO:HD2	1:B:213:PHE:CE2	2.51	0.45
1:C:266:TYR:CZ	1:C:274:SER:HB2	2.51	0.45
1:A:22:ASP:HB2	1:B:62:LEU:HD21	1.98	0.45
1:C:8:ARG:N	5:C:2001:HOH:O	2.50	0.45
1:C:225:LEU:HD11	1:C:273:LEU:HD13	1.98	0.45
1:A:210:ASP:CB	1:A:215:ASN:HB2	2.40	0.45
1:C:141:GLU:O	1:C:179:GLY:HA3	2.17	0.45
1:C:90:ARG:HG3	1:C:90:ARG:HH11	1.82	0.45
1:C:90:ARG:HG3	1:C:90:ARG:NH1	2.32	0.45
1:A:222:ARG:O	1:A:225:LEU:N	2.49	0.45
1:A:62:LEU:N	1:A:63:PRO:HD3	2.33	0.44
1:B:62:LEU:N	1:B:63:PRO:CD	2.80	0.44
1:C:146:LYS:O	1:C:168:HIS:CE1	2.70	0.44
1:C:120:ILE:CD1	1:C:165:PRO:HB2	2.48	0.43
1:C:206:VAL:HG13	1:C:216:VAL:HG13	2.00	0.43
1:A:92:LYS:HB3	1:A:134:HIS:O	2.18	0.43
1:C:237:ARG:O	1:C:296:VAL:HA	2.18	0.43
1:A:30:LEU:HD23	1:A:30:LEU:HA	1.86	0.43
1:C:268:ASN:HD21	1:C:272:TYR:HB2	1.82	0.43
1:C:132:GLU:OE2	1:C:192:ARG:HD2	2.17	0.43
1:C:230:ILE:H	1:C:230:ILE:HG13	1.51	0.43
1:C:263:ILE:HD13	1:C:277:ARG:HG2	2.00	0.43
1:A:257:ALA:HB2	1:A:264:ALA:HB2	2.00	0.43
1:B:54:GLU:O	1:B:57:ARG:HB2	2.18	0.43
1:C:80:THR:HA	1:C:157:TYR:CD2	2.54	0.43
1:C:230:ILE:HG21	1:C:236:LEU:HD21	1.99	0.43
1:A:250:LEU:HA	1:A:250:LEU:HD12	1.81	0.42
1:C:141:GLU:HB2	1:C:182:LEU:HD21	2.00	0.42
1:C:287:HIS:HD2	5:C:2024:HOH:O	2.01	0.42

*Continued on next page...*

*Continued from previous page...*

Atom-1	Atom-2	Interatomic distance (Å)	Clash overlap (Å)
1:B:151:GLN:HE21	1:B:151:GLN:HB3	1.62	0.42
1:C:144:SER:HA	1:C:145:PRO:HD3	1.93	0.42
1:C:267:LEU:HD23	1:C:273:LEU:HA	2.00	0.42
1:B:12:ALA:HB3	1:B:72:PHE:HD1	1.83	0.42
1:B:26:GLN:HG2	1:C:65:PHE:CD2	2.55	0.41
1:A:216:VAL:HB	1:A:275:ILE:HG22	2.01	0.41
1:A:62:LEU:N	1:A:63:PRO:CD	2.83	0.41
3:B:500:3D1:H5'1	1:C:158:SER:OG	2.19	0.41
1:C:59:ILE:HG21	1:C:74:THR:CG2	2.50	0.41
1:C:275:ILE:HG12	1:C:282:LEU:CD2	2.51	0.41
1:B:59:ILE:O	1:B:119:TYR:OH	2.34	0.41
1:A:23:SER:HG	2:B:1299:MET:N	2.19	0.41
1:B:33:SER:OG	1:C:112:ARG:NH2	2.53	0.41
1:B:60:VAL:HG23	1:B:130:VAL:HA	2.03	0.41
1:B:248:ALA:HB3	1:B:265:ILE:CG1	2.50	0.41
1:B:263:ILE:HG21	1:B:275:ILE:HD11	2.03	0.41
1:A:147:VAL:O	1:A:164:ILE:HG22	2.20	0.41
1:B:48:THR:HB	1:B:54:GLU:OE1	2.20	0.41
1:B:238:LEU:HA	1:B:295:ARG:O	2.20	0.41
1:C:91:ILE:HD13	1:C:119:TYR:HE2	1.86	0.41
1:C:50:TRP:HA	1:C:76:THR:OG1	2.21	0.41
1:A:8:ARG:NE	1:A:8:ARG:N	2.69	0.41
1:A:50:TRP:HA	1:A:76:THR:OG1	2.21	0.41
1:A:59:ILE:HG21	1:A:74:THR:CG2	2.51	0.41
1:A:85:ARG:HG3	1:A:143:THR:HG22	2.03	0.41
1:B:8:ARG:HD3	1:B:8:ARG:N	2.35	0.41
1:B:11:ILE:HG21	1:B:31:MET:HE1	2.02	0.41
1:B:92:LYS:HB3	1:B:134:HIS:O	2.21	0.41
1:C:50:TRP:HB3	1:C:78:PRO:HG3	2.02	0.41
1:C:147:VAL:HG21	1:C:178:VAL:HG12	2.03	0.41
1:A:49:PRO:HB3	1:B:213:PHE:CD1	2.56	0.41
1:B:121:ALA:HB1	1:B:122:PRO:HD2	2.04	0.40
1:A:156:PHE:O	1:A:160:GLU:HG2	2.21	0.40
1:B:30:LEU:HD23	1:B:30:LEU:HA	1.92	0.40
1:B:225:LEU:HD12	1:B:267:LEU:HD21	2.03	0.40

There are no symmetry-related clashes.

## 5.3 Torsion angles [i](#)

### 5.3.1 Protein backbone [i](#)

In the following table, the Percentiles column shows the percent Ramachandran outliers of the chain as a percentile score with respect to all X-ray entries followed by that with respect to entries of similar resolution.

The Analysed column shows the number of residues for which the backbone conformation was analysed, and the total number of residues.

Mol	Chain	Analysed	Favoured	Allowed	Outliers	Percentiles	
1	A	289/299 (97%)	266 (92%)	21 (7%)	2 (1%)	22	46
1	B	289/299 (97%)	268 (93%)	18 (6%)	3 (1%)	15	37
1	C	289/299 (97%)	269 (93%)	19 (7%)	1 (0%)	41	66
All	All	867/897 (97%)	803 (93%)	58 (7%)	6 (1%)	22	46

All (6) Ramachandran outliers are listed below:

Mol	Chain	Res	Type
1	B	230	ILE
1	A	95	ALA
1	A	230	ILE
1	B	92	LYS
1	B	95	ALA
1	C	230	ILE

### 5.3.2 Protein sidechains [i](#)

In the following table, the Percentiles column shows the percent sidechain outliers of the chain as a percentile score with respect to all X-ray entries followed by that with respect to entries of similar resolution.

The Analysed column shows the number of residues for which the sidechain conformation was analysed, and the total number of residues.

Mol	Chain	Analysed	Rotameric	Outliers	Percentiles	
1	A	231/237 (98%)	221 (96%)	10 (4%)	29	57
1	B	231/237 (98%)	219 (95%)	12 (5%)	23	49
1	C	231/237 (98%)	209 (90%)	22 (10%)	8	20
All	All	693/711 (98%)	649 (94%)	44 (6%)	17	40

All (44) residues with a non-rotameric sidechain are listed below:

Mol	Chain	Res	Type
1	A	8	ARG
1	A	20	THR
1	A	50	TRP
1	A	76	THR
1	A	77	TYR
1	A	126	LEU
1	A	144	SER
1	A	156	PHE
1	A	198	ASP
1	A	243	VAL
1	B	8	ARG
1	B	20	THR
1	B	50	TRP
1	B	77	TYR
1	B	80	THR
1	B	151	GLN
1	B	156	PHE
1	B	160	GLU
1	B	198	ASP
1	B	205	VAL
1	B	259	GLU
1	B	290	GLU
1	C	8	ARG
1	C	37	ASP
1	C	50	TRP
1	C	53	GLU
1	C	57	ARG
1	C	61	ASP
1	C	76	THR
1	C	77	TYR
1	C	89	VAL
1	C	114	GLU
1	C	116	SER
1	C	146	LYS
1	C	151	GLN
1	C	156	PHE
1	C	192	ARG
1	C	198	ASP
1	C	200	GLU
1	C	205	VAL
1	C	227	LYS
1	C	243	VAL

*Continued on next page...*

*Continued from previous page...*

Mol	Chain	Res	Type
1	C	270	ARG
1	C	297	GLU

Sometimes sidechains can be flipped to improve hydrogen bonding and reduce clashes. All (10) such sidechains are listed below:

Mol	Chain	Res	Type
1	A	221	HIS
1	A	287	HIS
1	B	151	GLN
1	B	287	HIS
1	C	26	GLN
1	C	93	GLN
1	C	168	HIS
1	C	185	HIS
1	C	221	HIS
1	C	287	HIS

### 5.3.3 RNA [i](#)

There are no RNA molecules in this entry.

### 5.4 Non-standard residues in protein, DNA, RNA chains [i](#)

There are no non-standard protein/DNA/RNA residues in this entry.

### 5.5 Carbohydrates [i](#)

There are no monosaccharides in this entry.

### 5.6 Ligand geometry [i](#)

Of 6 ligands modelled in this entry, 1 is monoatomic - leaving 5 for Mogul analysis.

In the following table, the Counts columns list the number of bonds (or angles) for which Mogul statistics could be retrieved, the number of bonds (or angles) that are observed in the model and the number of bonds (or angles) that are defined in the Chemical Component Dictionary. The Link column lists molecule types, if any, to which the group is linked. The Z score for a bond length (or angle) is the number of standard deviations the observed value is removed from the expected value. A bond length (or angle) with  $|Z| > 2$  is considered an outlier worth inspection. RMSZ is the root-mean-square of all Z scores of the bond lengths (or angles).



Mol	Type	Chain	Res	Link	Bond lengths			Bond angles		
					Counts	RMSZ	# Z  > 2	Counts	RMSZ	# Z  > 2
3	3D1	C	500	-	18,20,20	0.79	0	17,29,29	1.86	6 (35%)
2	MET	B	1299	-	7,8,8	0.80	0	7,9,9	1.44	2 (28%)
3	3D1	B	500	-	18,20,20	0.89	0	17,29,29	2.38	6 (35%)
3	3D1	A	500	-	18,20,20	1.05	1 (5%)	17,29,29	1.58	3 (17%)
2	MET	A	1301	-	7,8,8	0.85	1 (14%)	7,9,9	1.56	1 (14%)

In the following table, the Chirals column lists the number of chiral outliers, the number of chiral centers analysed, the number of these observed in the model and the number defined in the Chemical Component Dictionary. Similar counts are reported in the Torsion and Rings columns. '-' means no outliers of that kind were identified.

Mol	Type	Chain	Res	Link	Chirals	Torsions	Rings
3	3D1	C	500	-	-	0/2/18/18	0/3/3/3
2	MET	B	1299	-	-	1/8/8/8	-
3	3D1	B	500	-	-	0/2/18/18	0/3/3/3
3	3D1	A	500	-	-	0/2/18/18	0/3/3/3
2	MET	A	1301	-	-	1/8/8/8	-

All (2) bond length outliers are listed below:

Mol	Chain	Res	Type	Atoms	Z	Observed(Å)	Ideal(Å)
3	A	500	3D1	O4'-C1'	2.38	1.47	1.42
2	A	1301	MET	OXT-C	-2.01	1.24	1.30

All (18) bond angle outliers are listed below:

Mol	Chain	Res	Type	Atoms	Z	Observed(°)	Ideal(°)
3	B	500	3D1	N3-C2-N1	-5.12	120.68	128.68
3	C	500	3D1	N3-C2-N1	-4.76	121.24	128.68
3	B	500	3D1	C2'-C1'-N9	-4.62	103.62	114.27
3	A	500	3D1	N3-C2-N1	-4.58	121.52	128.68
3	B	500	3D1	O4'-C4'-C3'	-3.46	97.61	105.67
3	C	500	3D1	C2'-C3'-C4'	-3.28	95.93	102.76
2	A	1301	MET	OXT-C-O	-3.28	116.65	124.09
3	B	500	3D1	O4'-C4'-C5'	-3.13	102.45	109.21
3	C	500	3D1	C4'-O4'-C1'	-3.05	102.08	109.45
3	B	500	3D1	C2'-C3'-C4'	-2.85	96.81	102.76
2	B	1299	MET	OXT-C-CA	2.58	122.16	113.38
3	A	500	3D1	O4'-C4'-C3'	-2.52	99.78	105.67
3	B	500	3D1	C4'-O4'-C1'	-2.35	103.77	109.45
3	C	500	3D1	O5'-C5'-C4'	-2.17	103.84	111.29

Continued on next page...

*Continued from previous page...*

Mol	Chain	Res	Type	Atoms	Z	Observed(°)	Ideal(°)
2	B	1299	MET	OXT-C-O	-2.13	119.26	124.09
3	C	500	3D1	O4'-C4'-C3'	-2.09	100.80	105.67
3	A	500	3D1	C2-N1-C6	2.05	122.26	118.75
3	C	500	3D1	C4-C5-N7	-2.02	107.29	109.40

There are no chirality outliers.

All (2) torsion outliers are listed below:

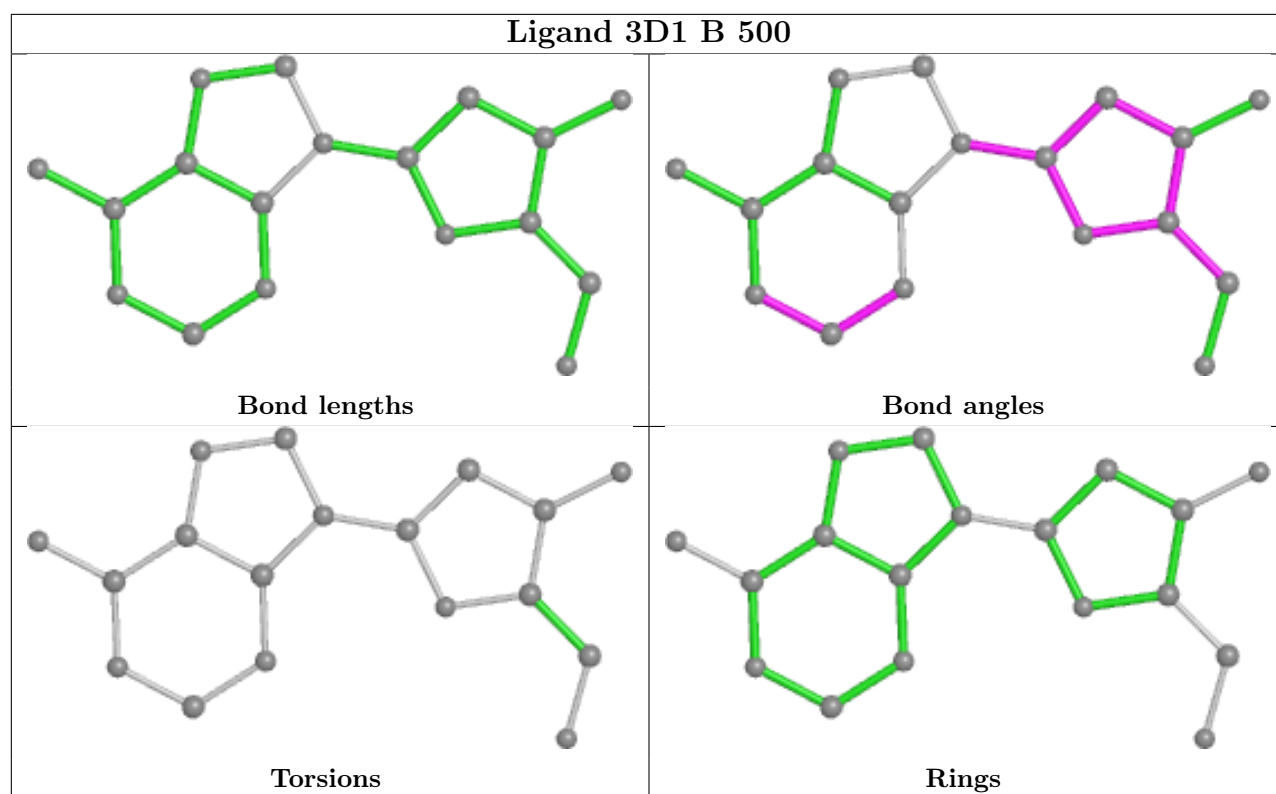
Mol	Chain	Res	Type	Atoms
2	A	1301	MET	CB-CG-SD-CE
2	B	1299	MET	CB-CG-SD-CE

There are no ring outliers.

3 monomers are involved in 7 short contacts:

Mol	Chain	Res	Type	Clashes	Symm-Clashes
2	B	1299	MET	5	0
3	B	500	3D1	1	0
3	A	500	3D1	2	0

The following is a two-dimensional graphical depiction of Mogul quality analysis of bond lengths, bond angles, torsion angles, and ring geometry for all instances of the Ligand of Interest. In addition, ligands with molecular weight > 250 and outliers as shown on the validation Tables will also be included. For torsion angles, if less than 5% of the Mogul distribution of torsion angles is within 10 degrees of the torsion angle in question, then that torsion angle is considered an outlier. Any bond that is central to one or more torsion angles identified as an outlier by Mogul will be highlighted in the graph. For rings, the root-mean-square deviation (RMSD) between the ring in question and similar rings identified by Mogul is calculated over all ring torsion angles. If the average RMSD is greater than 60 degrees and the minimal RMSD between the ring in question and any Mogul-identified rings is also greater than 60 degrees, then that ring is considered an outlier. The outliers are highlighted in purple. The color gray indicates Mogul did not find sufficient equivalents in the CSD to analyse the geometry.



## 5.7 Other polymers [i](#)

There are no such residues in this entry.

## 5.8 Polymer linkage issues [i](#)

There are no chain breaks in this entry.

## 6 Fit of model and data

### 6.1 Protein, DNA and RNA chains

In the following table, the column labelled ‘#RSRZ> 2’ contains the number (and percentage) of RSRZ outliers, followed by percent RSRZ outliers for the chain as percentile scores relative to all X-ray entries and entries of similar resolution. The OWAB column contains the minimum, median, 95<sup>th</sup> percentile and maximum values of the occupancy-weighted average B-factor per residue. The column labelled ‘Q< 0.9’ lists the number of (and percentage) of residues with an average occupancy less than 0.9.

Mol	Chain	Analysed	<RSRZ>	#RSRZ>2	OWAB(Å <sup>2</sup> )	Q<0.9
1	A	291/299 (97%)	0.40	11 (3%) 40 39	2, 8, 22, 31	0
1	B	291/299 (97%)	0.33	14 (4%) 30 28	2, 8, 22, 31	0
1	C	291/299 (97%)	0.56	33 (11%) 5 4	2, 8, 23, 31	0
All	All	873/897 (97%)	0.43	58 (6%) 18 16	2, 8, 23, 31	0

All (58) RSRZ outliers are listed below:

Mol	Chain	Res	Type	RSRZ
1	C	201	ALA	7.3
1	C	195	VAL	6.1
1	C	200	GLU	5.4
1	C	225	LEU	4.9
1	C	99	ALA	4.7
1	C	229	GLY	4.7
1	C	197	GLN	4.6
1	C	202	LEU	4.4
1	A	100	ARG	4.4
1	C	194	ALA	3.8
1	C	97	GLY	3.7
1	B	100	ARG	3.6
1	A	108	ALA	3.3
1	C	232	TYR	3.2
1	C	204	GLY	3.1
1	B	99	ALA	3.1
1	B	201	ALA	3.1
1	C	196	GLU	2.9
1	C	100	ARG	2.9
1	C	191	ASN	2.9
1	B	103	TRP	2.8
1	C	203	VAL	2.8
1	C	230	ILE	2.8

*Continued on next page...*

*Continued from previous page...*

Mol	Chain	Res	Type	RSRZ
1	C	199	GLY	2.7
1	C	227	LYS	2.7
1	C	226	GLU	2.7
1	B	245	PRO	2.7
1	C	233	GLY	2.7
1	C	101	GLY	2.6
1	A	44	CYS	2.6
1	B	193	PRO	2.6
1	C	146	LYS	2.5
1	A	107	GLY	2.5
1	B	95	ALA	2.5
1	C	98	GLY	2.4
1	B	291	GLY	2.4
1	C	222	ARG	2.4
1	A	187	ILE	2.4
1	B	101	GLY	2.3
1	C	231	GLY	2.3
1	B	243	VAL	2.3
1	C	44	CYS	2.3
1	C	242	GLY	2.3
1	C	95	ALA	2.3
1	A	150	GLU	2.3
1	B	198	ASP	2.2
1	B	203	VAL	2.2
1	C	40	VAL	2.2
1	C	102	GLN	2.2
1	B	185	HIS	2.2
1	C	15	SER	2.1
1	A	13	PHE	2.1
1	A	109	GLY	2.1
1	A	101	GLY	2.1
1	C	96	LYS	2.0
1	A	244	LEU	2.0
1	B	191	ASN	2.0
1	A	137	LEU	2.0

## 6.2 Non-standard residues in protein, DNA, RNA chains

There are no non-standard protein/DNA/RNA residues in this entry.

### 6.3 Carbohydrates [i](#)

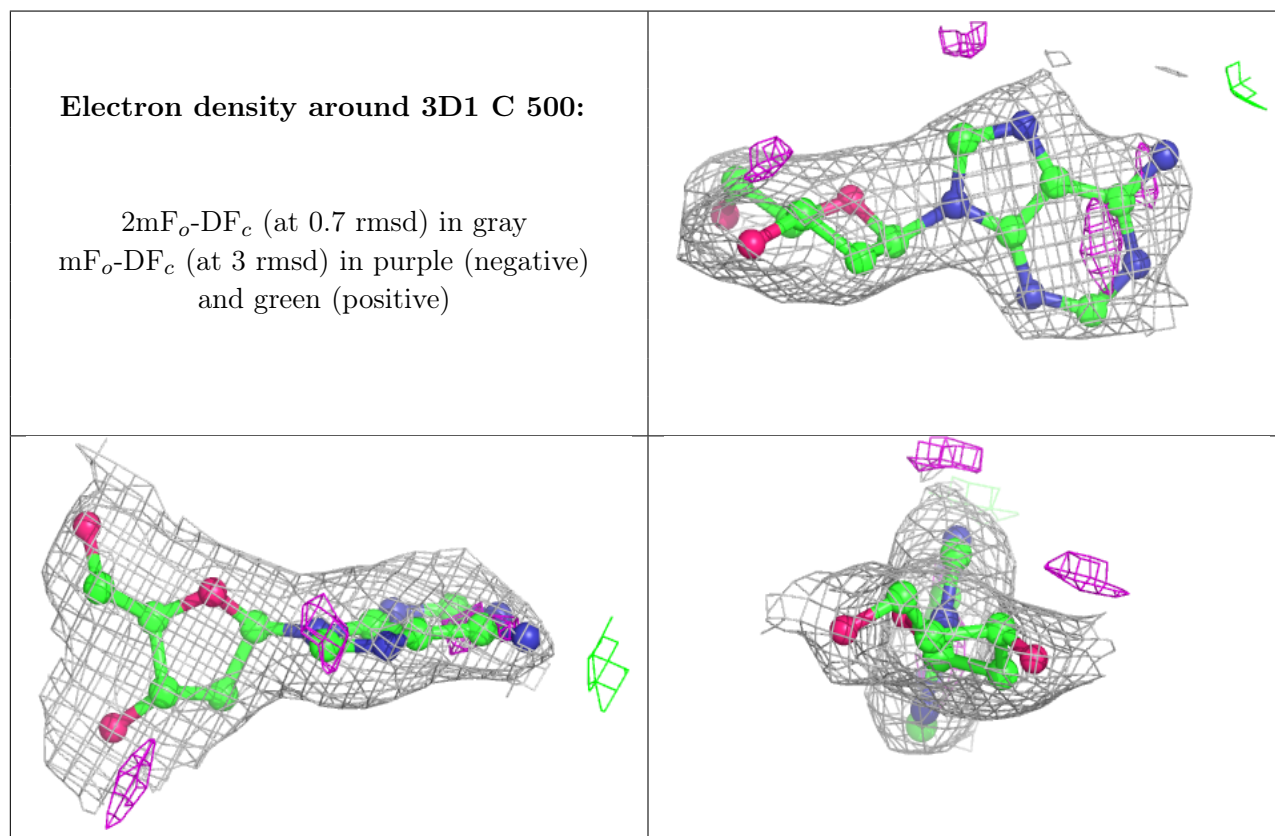
There are no monosaccharides in this entry.

### 6.4 Ligands [i](#)

In the following table, the Atoms column lists the number of modelled atoms in the group and the number defined in the chemical component dictionary. The B-factors column lists the minimum, median, 95<sup>th</sup> percentile and maximum values of B factors of atoms in the group. The column labelled 'Q< 0.9' lists the number of atoms with occupancy less than 0.9.

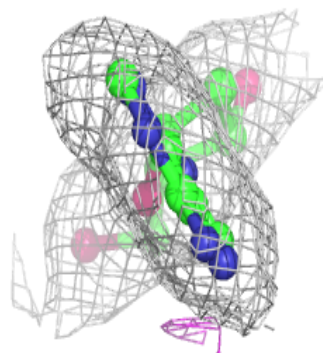
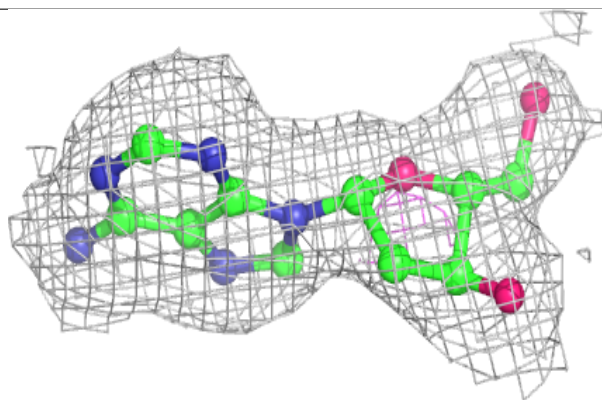
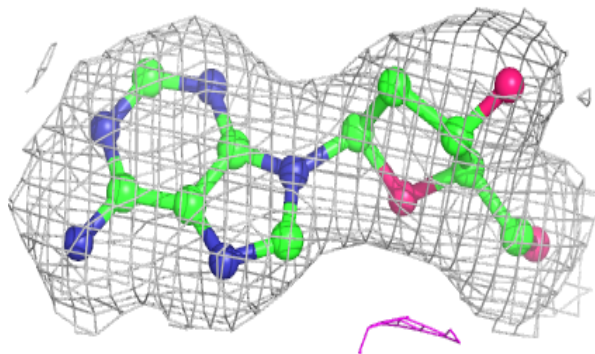
Mol	Type	Chain	Res	Atoms	RSCC	RSR	B-factors( $\text{\AA}^2$ )	Q<0.9
2	MET	B	1299	9/9	0.84	0.23	18,18,19,19	0
2	MET	A	1301	9/9	0.90	0.22	8,9,11,12	0
3	3D1	C	500	18/18	0.90	0.21	2,2,4,6	0
4	CL	A	1302	1/1	0.94	0.50	58,58,58,58	0
3	3D1	A	500	18/18	0.95	0.16	2,3,6,7	0
3	3D1	B	500	18/18	0.96	0.16	2,2,4,5	0

The following is a graphical depiction of the model fit to experimental electron density of all instances of the Ligand of Interest. In addition, ligands with molecular weight > 250 and outliers as shown on the geometry validation Tables will also be included. Each fit is shown from different orientation to approximate a three-dimensional view.

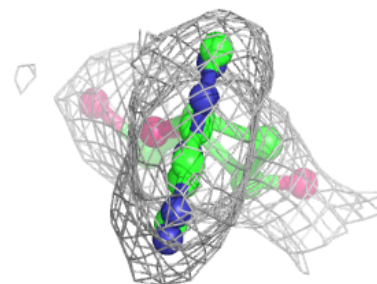
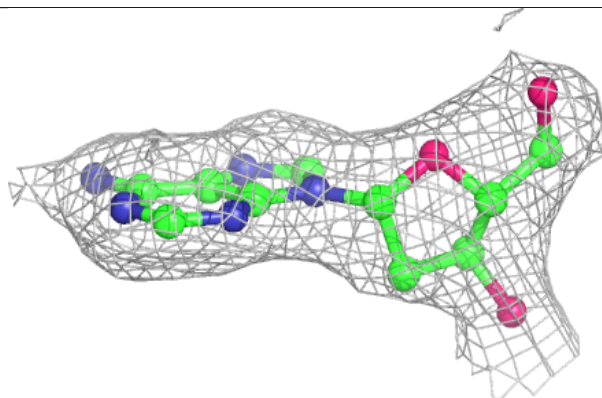
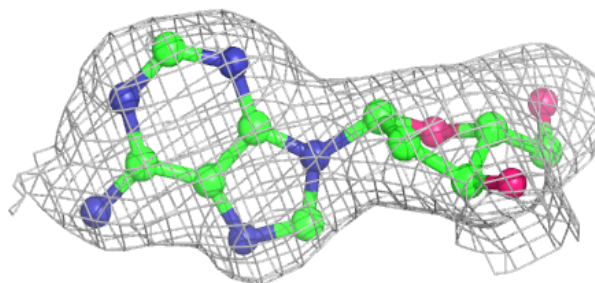


**Electron density around 3D1 A 500:**

$2mF_o-DF_c$  (at 0.7 rmsd) in gray  
 $mF_o-DF_c$  (at 3 rmsd) in purple (negative)  
and green (positive)

**Electron density around 3D1 B 500:**

$2mF_o-DF_c$  (at 0.7 rmsd) in gray  
 $mF_o-DF_c$  (at 3 rmsd) in purple (negative)  
and green (positive)



## 6.5 Other polymers [i](#)

There are no such residues in this entry.