



# Full wwPDB X-ray Structure Validation Report ⓘ

Nov 19, 2023 – 08:30 PM JST

PDB ID : 7BRP  
Title : Crystal structure of the 2019-nCoV main protease complexed with Boceprevir  
Authors : Fu, L.F.  
Deposited on : 2020-03-29  
Resolution : 1.80 Å(reported)

This is a Full wwPDB X-ray Structure Validation Report for a publicly released PDB entry.

We welcome your comments at [validation@mail.wwpdb.org](mailto:validation@mail.wwpdb.org)

A user guide is available at

<https://www.wwpdb.org/validation/2017/XrayValidationReportHelp>

with specific help available everywhere you see the ⓘ symbol.

The types of validation reports are described at

<http://www.wwpdb.org/validation/2017/FAQs#types>.

---

The following versions of software and data (see [references ⓘ](#)) were used in the production of this report:

MolProbity : 4.02b-467  
Mogul : 1.8.5 (274361), CSD as541be (2020)  
Xtriage (Phenix) : 1.13  
EDS : 2.36  
buster-report : 1.1.7 (2018)  
Percentile statistics : 20191225.v01 (using entries in the PDB archive December 25th 2019)  
Refmac : 5.8.0158  
CCP4 : 7.0.044 (Gargrove)  
Ideal geometry (proteins) : Engh & Huber (2001)  
Ideal geometry (DNA, RNA) : Parkinson et al. (1996)  
Validation Pipeline (wwPDB-VP) : 2.36

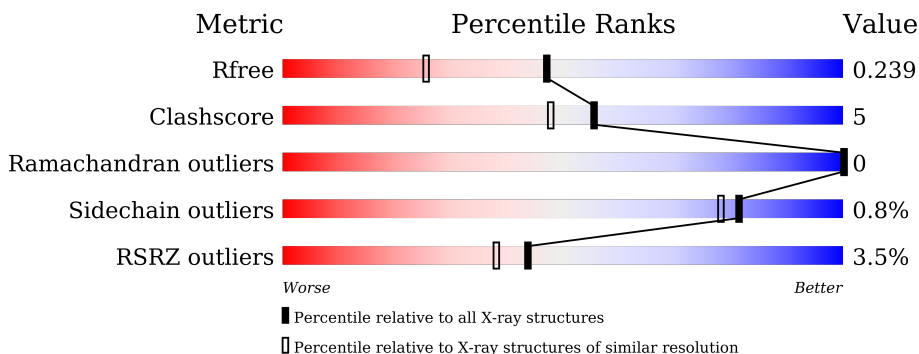
# 1 Overall quality at a glance

The following experimental techniques were used to determine the structure:

*X-RAY DIFFRACTION*

The reported resolution of this entry is 1.80 Å.

Percentile scores (ranging between 0-100) for global validation metrics of the entry are shown in the following graphic. The table shows the number of entries on which the scores are based.



Metric	Whole archive (#Entries)	Similar resolution (#Entries, resolution range(Å))
$R_{free}$	130704	5950 (1.80-1.80)
Clashscore	141614	6793 (1.80-1.80)
Ramachandran outliers	138981	6697 (1.80-1.80)
Sidechain outliers	138945	6696 (1.80-1.80)
RSRZ outliers	127900	5850 (1.80-1.80)

The table below summarises the geometric issues observed across the polymeric chains and their fit to the electron density. The red, orange, yellow and green segments of the lower bar indicate the fraction of residues that contain outliers for  $\geq 3$ , 2, 1 and 0 types of geometric quality criteria respectively. A grey segment represents the fraction of residues that are not modelled. The numeric value for each fraction is indicated below the corresponding segment, with a dot representing fractions  $\leq 5\%$ . The upper red bar (where present) indicates the fraction of residues that have poor fit to the electron density. The numeric value is given above the bar.

Mol	Chain	Length	Quality of chain
1	A	307	
1	B	307	



*Continued from previous page...*

Mol	Chain	Residues	Atoms				ZeroOcc	AltConf
			Total	C	N	O		
2	A	1	37	27	5	5	0	0

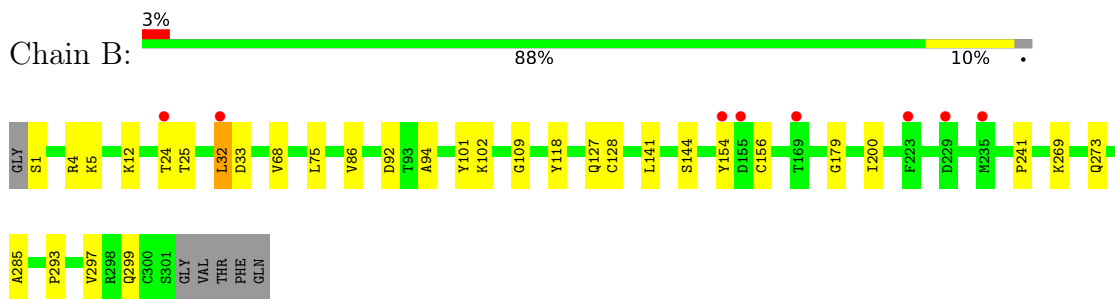
- Molecule 3 is water.

Mol	Chain	Residues	Atoms		ZeroOcc	AltConf
3	B	196	Total	O	0	0
			196	196		
3	A	171	Total	O	0	0
			171	171		

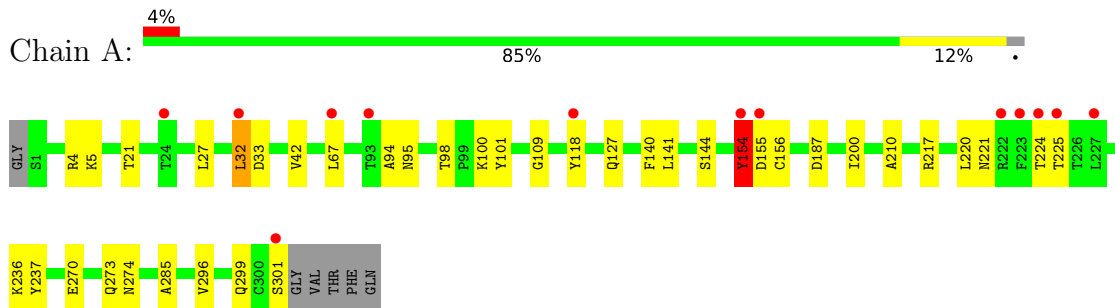
### 3 Residue-property plots [i](#)

These plots are drawn for all protein, RNA, DNA and oligosaccharide chains in the entry. The first graphic for a chain summarises the proportions of the various outlier classes displayed in the second graphic. The second graphic shows the sequence view annotated by issues in geometry and electron density. Residues are color-coded according to the number of geometric quality criteria for which they contain at least one outlier: green = 0, yellow = 1, orange = 2 and red = 3 or more. A red dot above a residue indicates a poor fit to the electron density ( $RSRZ > 2$ ). Stretches of 2 or more consecutive residues without any outlier are shown as a green connector. Residues present in the sample, but not in the model, are shown in grey.

- Molecule 1: 3C-like proteinase



- Molecule 1: 3C-like proteinase



## 4 Data and refinement statistics

Property	Value	Source
Space group	P 1 21 1	Depositor
Cell constants a, b, c, $\alpha$ , $\beta$ , $\gamma$	46.37Å 53.55Å 113.77Å 90.00° 101.66° 90.00°	Depositor
Resolution (Å)	27.57 – 1.80 48.27 – 1.80	Depositor EDS
% Data completeness (in resolution range)	96.9 (27.57-1.80) 97.0 (48.27-1.80)	Depositor EDS
$R_{merge}$	(Not available)	Depositor
$R_{sym}$	(Not available)	Depositor
$\langle I/\sigma(I) \rangle$ <sup>1</sup>	4.07 (at 1.79Å)	Xtrriage
Refinement program	PHENIX 1.16_3549	Depositor
R, $R_{free}$	0.216 , 0.240 0.215 , 0.239	Depositor DCC
$R_{free}$ test set	2558 reflections (5.16%)	wwPDB-VP
Wilson B-factor (Å <sup>2</sup> )	17.7	Xtrriage
Anisotropy	0.088	Xtrriage
Bulk solvent $k_{sol}$ (e/Å <sup>3</sup> ), $B_{sol}$ (Å <sup>2</sup> )	0.36 , 46.1	EDS
L-test for twinning <sup>2</sup>	$\langle  L  \rangle = 0.49$ , $\langle L^2 \rangle = 0.33$	Xtrriage
Estimated twinning fraction	0.000 for h,-k,-h-l	Xtrriage
$F_o, F_c$ correlation	0.95	EDS
Total number of atoms	5099	wwPDB-VP
Average B, all atoms (Å <sup>2</sup> )	25.0	wwPDB-VP

Xtrriage's analysis on translational NCS is as follows: *The analyses of the Patterson function reveals a significant off-origin peak that is 81.17 % of the origin peak, indicating pseudo-translational symmetry. The chance of finding a peak of this or larger height randomly in a structure without pseudo-translational symmetry is equal to 3.7759e-07. The detected translational NCS is most likely also responsible for the elevated intensity ratio.*

<sup>1</sup>Intensities estimated from amplitudes.

<sup>2</sup>Theoretical values of  $\langle |L| \rangle$ ,  $\langle L^2 \rangle$  for acentric reflections are 0.5, 0.333 respectively for untwinned datasets, and 0.375, 0.2 for perfectly twinned datasets.

## 5 Model quality [i](#)

### 5.1 Standard geometry [i](#)

Bond lengths and bond angles in the following residue types are not validated in this section: U5G

The Z score for a bond length (or angle) is the number of standard deviations the observed value is removed from the expected value. A bond length (or angle) with  $|Z| > 5$  is considered an outlier worth inspection. RMSZ is the root-mean-square of all Z scores of the bond lengths (or angles).

Mol	Chain	Bond lengths		Bond angles	
		RMSZ	# Z  >5	RMSZ	# Z  >5
1	A	0.26	0/2387	0.45	0/3246
1	B	0.26	0/2387	0.45	0/3246
All	All	0.26	0/4774	0.45	0/6492

Chiral center outliers are detected by calculating the chiral volume of a chiral center and verifying if the center is modelled as a planar moiety or with the opposite hand. A planarity outlier is detected by checking planarity of atoms in a peptide group, atoms in a mainchain group or atoms of a sidechain that are expected to be planar.

Mol	Chain	#Chirality outliers	#Planarity outliers
1	A	0	2
1	B	0	1
All	All	0	3

There are no bond length outliers.

There are no bond angle outliers.

There are no chirality outliers.

All (3) planarity outliers are listed below:

Mol	Chain	Res	Type	Group
1	A	154	TYR	Peptide
1	A	32	LEU	Peptide
1	B	32	LEU	Peptide

### 5.2 Too-close contacts [i](#)

In the following table, the Non-H and H(model) columns list the number of non-hydrogen atoms and hydrogen atoms in the chain respectively. The H(added) column lists the number of hydrogen atoms added and optimized by MolProbity. The Clashes column lists the number of clashes within

the asymmetric unit, whereas Symm-Clashes lists symmetry-related clashes.

Mol	Chain	Non-H	H(model)	H(added)	Clashes	Symm-Clashes
1	A	2329	0	2276	27	0
1	B	2329	0	2276	22	0
2	A	37	0	0	1	0
2	B	37	0	0	1	0
3	A	171	0	0	1	0
3	B	196	0	0	5	0
All	All	5099	0	4552	47	0

The all-atom clashscore is defined as the number of clashes found per 1000 atoms (including hydrogen atoms). The all-atom clashscore for this structure is 5.

All (47) close contacts within the same asymmetric unit are listed below, sorted by their clash magnitude.

Atom-1	Atom-2	Interatomic distance (Å)	Clash overlap (Å)
1:B:4:ARG:O	1:B:299:GLN:NE2	2.28	0.66
1:A:274:ASN:O	3:A:501:HOH:O	2.14	0.64
1:B:241:PRO:HG2	3:B:503:HOH:O	1.98	0.63
1:A:4:ARG:O	1:A:299:GLN:NE2	2.29	0.61
1:B:144:SER:OG	3:B:501:HOH:O	2.12	0.58
1:A:118:TYR:CE1	1:A:141:LEU:HB2	2.39	0.58
1:A:109:GLY:HA2	1:A:200:ILE:HD13	1.86	0.57
1:B:109:GLY:HA2	1:B:200:ILE:HD13	1.90	0.53
1:A:224:THR:HG22	1:A:225:THR:H	1.74	0.53
1:B:33:ASP:O	1:B:94:ALA:HA	2.11	0.51
1:A:154:TYR:HB3	1:A:155:ASP:OD1	2.10	0.51
1:B:285:ALA:HB3	1:A:285:ALA:HB3	1.93	0.50
1:B:127:GLN:O	1:A:4:ARG:NH2	2.41	0.49
2:B:401:U5G:N20	2:B:401:U5G:C17	2.73	0.49
1:A:221:ASN:ND2	1:A:270:GLU:HG3	2.28	0.49
1:B:118:TYR:CE1	1:B:141:LEU:HB2	2.49	0.47
1:B:241:PRO:O	3:B:503:HOH:O	2.20	0.47
1:B:12:LYS:NZ	3:B:514:HOH:O	2.44	0.47
1:A:33:ASP:O	1:A:94:ALA:HA	2.14	0.47
1:A:154:TYR:C	1:A:156:CYS:H	2.19	0.47
1:A:118:TYR:CE1	1:A:144:SER:HB3	2.50	0.46
1:A:237:TYR:OH	1:A:273:GLN:HA	2.15	0.46
1:B:92:ASP:OD1	3:B:502:HOH:O	2.20	0.46
1:A:27:LEU:HD21	1:A:42:VAL:HB	1.97	0.46
1:A:155:ASP:OD1	1:A:155:ASP:N	2.47	0.46
1:A:301:SER:O	1:A:301:SER:OG	2.30	0.45

*Continued on next page...*



Continued from previous page...

Atom-1	Atom-2	Interatomic distance (Å)	Clash overlap (Å)
1:B:68:VAL:HG12	1:B:75:LEU:HD12	1.99	0.45
1:A:21:THR:HB	1:A:67:LEU:HB3	1.99	0.45
2:A:401:U5G:N20	2:A:401:U5G:C17	2.72	0.44
1:B:118:TYR:CE1	1:B:144:SER:HB3	2.52	0.44
1:B:24:THR:HG23	1:B:25:THR:HG23	2.00	0.44
1:A:95:ASN:HB3	1:A:98:THR:OG1	2.17	0.44
1:B:32:LEU:HD13	1:B:101:TYR:CE2	2.53	0.43
1:B:86:VAL:HG23	1:B:179:GLY:HA2	2.00	0.43
1:A:32:LEU:HD13	1:A:101:TYR:CE2	2.54	0.42
1:A:187:ASP:OD1	1:A:187:ASP:N	2.52	0.42
1:B:102:LYS:HG3	1:B:156:CYS:SG	2.59	0.42
1:A:217:ARG:HB2	1:A:220:LEU:HD12	2.00	0.42
1:B:1:SER:N	1:A:140:PHE:O	2.53	0.42
1:B:5:LYS:HG2	1:B:127:GLN:HB2	2.02	0.41
1:A:118:TYR:CZ	1:A:144:SER:HB3	2.55	0.41
1:A:154:TYR:C	1:A:156:CYS:N	2.74	0.41
1:A:210:ALA:HB2	1:A:296:VAL:HG13	2.03	0.41
1:A:5:LYS:HG2	1:A:127:GLN:HB2	2.02	0.41
1:B:293:PRO:O	1:B:297:VAL:HG23	2.21	0.41
1:B:128:CYS:SG	1:A:4:ARG:NH1	2.94	0.40
1:B:269:LYS:O	1:B:273:GLN:HG3	2.22	0.40

There are no symmetry-related clashes.

## 5.3 Torsion angles [i](#)

### 5.3.1 Protein backbone [i](#)

In the following table, the Percentiles column shows the percent Ramachandran outliers of the chain as a percentile score with respect to all X-ray entries followed by that with respect to entries of similar resolution.

The Analysed column shows the number of residues for which the backbone conformation was analysed, and the total number of residues.

Mol	Chain	Analysed	Favoured	Allowed	Outliers	Percentiles	
1	A	301/307 (98%)	295 (98%)	6 (2%)	0	100	100
1	B	301/307 (98%)	295 (98%)	6 (2%)	0	100	100
All	All	602/614 (98%)	590 (98%)	12 (2%)	0	100	100

There are no Ramachandran outliers to report.

### 5.3.2 Protein sidechains [i](#)

In the following table, the Percentiles column shows the percent sidechain outliers of the chain as a percentile score with respect to all X-ray entries followed by that with respect to entries of similar resolution.

The Analysed column shows the number of residues for which the sidechain conformation was analysed, and the total number of residues.

Mol	Chain	Analysed	Rotameric	Outliers	Percentiles	
1	A	260/263 (99%)	257 (99%)	3 (1%)	71	65
1	B	260/263 (99%)	259 (100%)	1 (0%)	91	89
All	All	520/526 (99%)	516 (99%)	4 (1%)	81	78

All (4) residues with a non-rotameric sidechain are listed below:

Mol	Chain	Res	Type
1	B	154	TYR
1	A	100	LYS
1	A	154	TYR
1	A	236	LYS

Sometimes sidechains can be flipped to improve hydrogen bonding and reduce clashes. All (5) such sidechains are listed below:

Mol	Chain	Res	Type
1	B	19	GLN
1	B	69	GLN
1	B	74	GLN
1	B	84	ASN
1	A	84	ASN

### 5.3.3 RNA [i](#)

There are no RNA molecules in this entry.

## 5.4 Non-standard residues in protein, DNA, RNA chains [i](#)

There are no non-standard protein/DNA/RNA residues in this entry.

## 5.5 Carbohydrates [i](#)

There are no monosaccharides in this entry.

## 5.6 Ligand geometry [i](#)

2 ligands are modelled in this entry.

In the following table, the Counts columns list the number of bonds (or angles) for which Mogul statistics could be retrieved, the number of bonds (or angles) that are observed in the model and the number of bonds (or angles) that are defined in the Chemical Component Dictionary. The Link column lists molecule types, if any, to which the group is linked. The Z score for a bond length (or angle) is the number of standard deviations the observed value is removed from the expected value. A bond length (or angle) with  $|Z| > 2$  is considered an outlier worth inspection. RMSZ is the root-mean-square of all Z scores of the bond lengths (or angles).

Mol	Type	Chain	Res	Link	Bond lengths			Bond angles		
					Counts	RMSZ	# Z  > 2	Counts	RMSZ	# Z  > 2
2	U5G	A	401	1	38,39,39	3.02	21 (55%)	46,62,62	2.64	15 (32%)
2	U5G	B	401	1	38,39,39	3.06	21 (55%)	46,62,62	2.61	12 (26%)

In the following table, the Chirals column lists the number of chiral outliers, the number of chiral centers analysed, the number of these observed in the model and the number defined in the Chemical Component Dictionary. Similar counts are reported in the Torsion and Rings columns. '-' means no outliers of that kind were identified.

Mol	Type	Chain	Res	Link	Chirals	Torsions	Rings
2	U5G	A	401	1	-	2/43/74/74	0/3/3/3
2	U5G	B	401	1	-	2/43/74/74	0/3/3/3

All (42) bond length outliers are listed below:

Mol	Chain	Res	Type	Atoms	Z	Observed(Å)	Ideal(Å)
2	B	401	U5G	C21-N20	7.23	1.51	1.34
2	A	401	U5G	C21-N20	7.14	1.51	1.34
2	B	401	U5G	C12-N11	6.77	1.48	1.34
2	A	401	U5G	C12-N11	6.65	1.48	1.34
2	B	401	U5G	C28-N29	6.30	1.48	1.35
2	A	401	U5G	C28-N29	6.20	1.47	1.35
2	B	401	U5G	C28-N27	5.83	1.48	1.35
2	A	401	U5G	C28-N27	5.81	1.48	1.35
2	B	401	U5G	C02-N37	5.52	1.46	1.32
2	A	401	U5G	C02-N37	5.49	1.46	1.32

*Continued on next page...*

Continued from previous page...

Mol	Chain	Res	Type	Atoms	Z	Observed(Å)	Ideal(Å)
2	B	401	U5G	C06-C07	4.72	1.60	1.53
2	A	401	U5G	C06-C07	4.29	1.59	1.53
2	B	401	U5G	C19-N20	4.00	1.53	1.47
2	A	401	U5G	C19-N20	3.82	1.53	1.47
2	A	401	U5G	C10-C07	-3.16	1.44	1.56
2	B	401	U5G	C08-C07	-3.13	1.44	1.56
2	A	401	U5G	C08-C07	-3.11	1.44	1.56
2	A	401	U5G	O01-C02	-3.11	1.17	1.23
2	B	401	U5G	O01-C02	-3.11	1.17	1.23
2	B	401	U5G	C10-C07	-3.07	1.45	1.56
2	A	401	U5G	C09-C08	2.88	1.66	1.54
2	A	401	U5G	C16-C15	2.84	1.56	1.51
2	B	401	U5G	C09-C08	2.82	1.66	1.54
2	B	401	U5G	C09-C10	2.78	1.65	1.54
2	B	401	U5G	C16-C15	2.77	1.56	1.51
2	A	401	U5G	C09-C10	2.77	1.65	1.54
2	A	401	U5G	C14-C13	-2.73	1.50	1.54
2	B	401	U5G	C13-N20	2.73	1.49	1.46
2	A	401	U5G	C13-N20	2.68	1.49	1.46
2	B	401	U5G	O36-C12	-2.66	1.18	1.23
2	B	401	U5G	C14-C13	-2.64	1.50	1.54
2	A	401	U5G	C17-C16	2.57	1.60	1.53
2	A	401	U5G	O35-C21	-2.48	1.18	1.22
2	B	401	U5G	C17-C16	2.48	1.60	1.53
2	A	401	U5G	O36-C12	-2.47	1.18	1.23
2	B	401	U5G	O35-C21	-2.36	1.18	1.22
2	A	401	U5G	C16-C14	2.33	1.55	1.51
2	B	401	U5G	C16-C14	2.30	1.55	1.51
2	A	401	U5G	O34-C28	-2.21	1.18	1.23
2	A	401	U5G	C14-C15	2.20	1.55	1.51
2	B	401	U5G	O34-C28	-2.16	1.18	1.23
2	B	401	U5G	C14-C15	2.16	1.55	1.51

All (27) bond angle outliers are listed below:

Mol	Chain	Res	Type	Atoms	Z	Observed(°)	Ideal(°)
2	A	401	U5G	C08-C07-C10	9.91	102.27	88.59
2	B	401	U5G	C08-C07-C10	9.89	102.23	88.59
2	A	401	U5G	C19-N20-C13	-7.11	102.98	112.39
2	B	401	U5G	C19-N20-C13	-6.98	103.15	112.39
2	B	401	U5G	C17-C16-C15	6.75	137.70	118.42
2	A	401	U5G	C17-C16-C15	6.26	136.30	118.42

Continued on next page...

Continued from previous page...

Mol	Chain	Res	Type	Atoms	Z	Observed(°)	Ideal(°)
2	B	401	U5G	C18-C16-C15	-4.38	105.93	118.42
2	A	401	U5G	C12-C13-N20	-4.04	102.31	111.83
2	A	401	U5G	C18-C16-C15	-4.01	106.99	118.42
2	A	401	U5G	C18-C16-C17	-3.95	108.03	113.47
2	B	401	U5G	C18-C16-C17	-3.65	108.44	113.47
2	B	401	U5G	C13-C12-N11	3.29	121.80	115.57
2	B	401	U5G	C12-C13-N20	-3.21	104.27	111.83
2	B	401	U5G	C05-N11-C12	-3.17	117.47	123.07
2	A	401	U5G	C17-C16-C14	3.09	127.85	118.36
2	A	401	U5G	C30-N29-C28	-2.94	121.34	125.37
2	A	401	U5G	C18-C16-C14	-2.86	109.58	118.36
2	B	401	U5G	C30-N29-C28	-2.84	121.47	125.37
2	A	401	U5G	C23-C22-N27	-2.77	108.37	111.84
2	A	401	U5G	C13-C12-N11	2.61	120.51	115.57
2	B	401	U5G	O36-C12-N11	-2.50	118.30	122.93
2	B	401	U5G	C18-C16-C14	-2.50	110.69	118.36
2	A	401	U5G	C23-C22-C21	-2.48	110.22	113.40
2	B	401	U5G	C17-C16-C14	2.44	125.84	118.36
2	A	401	U5G	C21-C22-N27	2.41	109.96	107.34
2	A	401	U5G	C05-N11-C12	-2.40	118.82	123.07
2	A	401	U5G	O36-C12-N11	-2.17	118.92	122.93

There are no chirality outliers.

All (4) torsion outliers are listed below:

Mol	Chain	Res	Type	Atoms
2	B	401	U5G	O01-C02-C03-O04
2	A	401	U5G	O01-C02-C03-O04
2	B	401	U5G	N37-C02-C03-O04
2	A	401	U5G	N37-C02-C03-O04

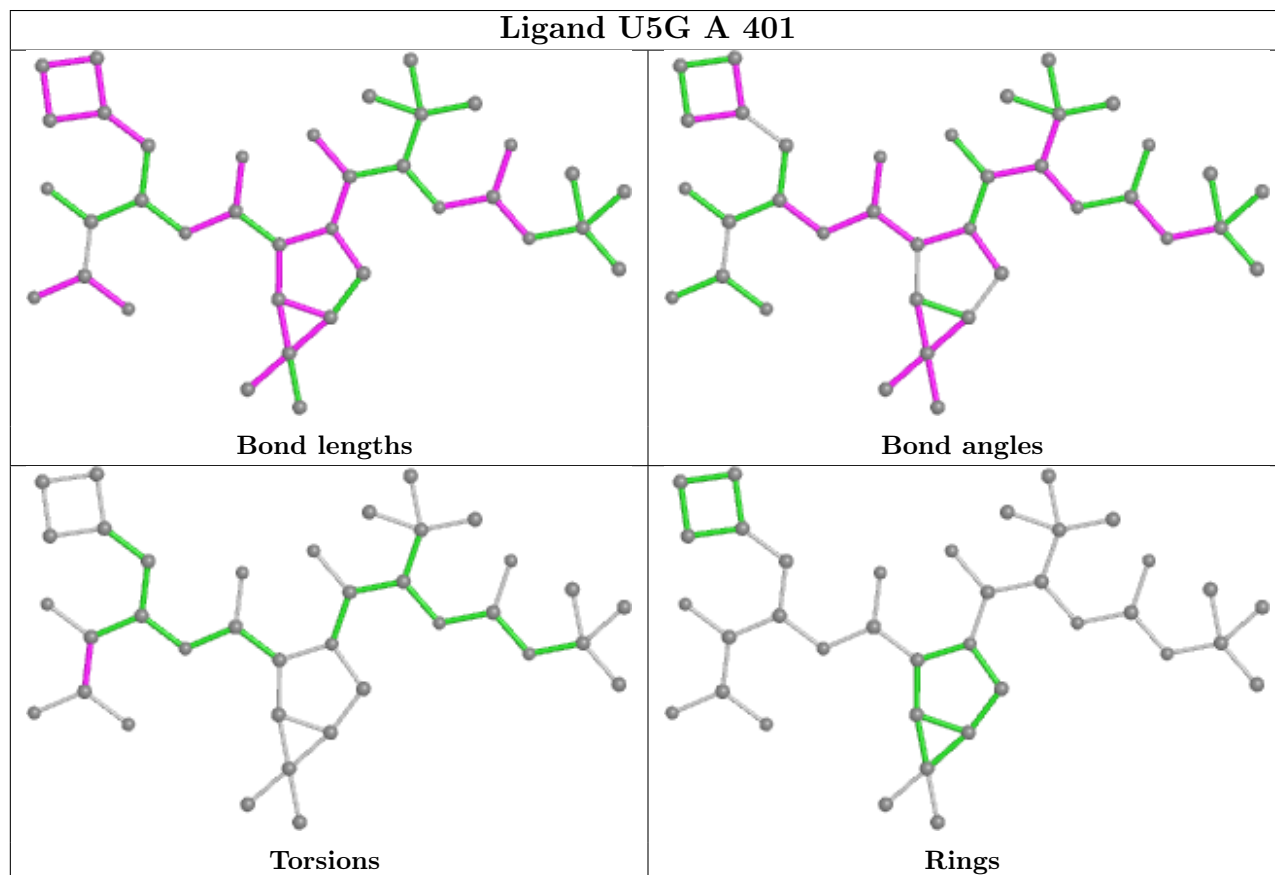
There are no ring outliers.

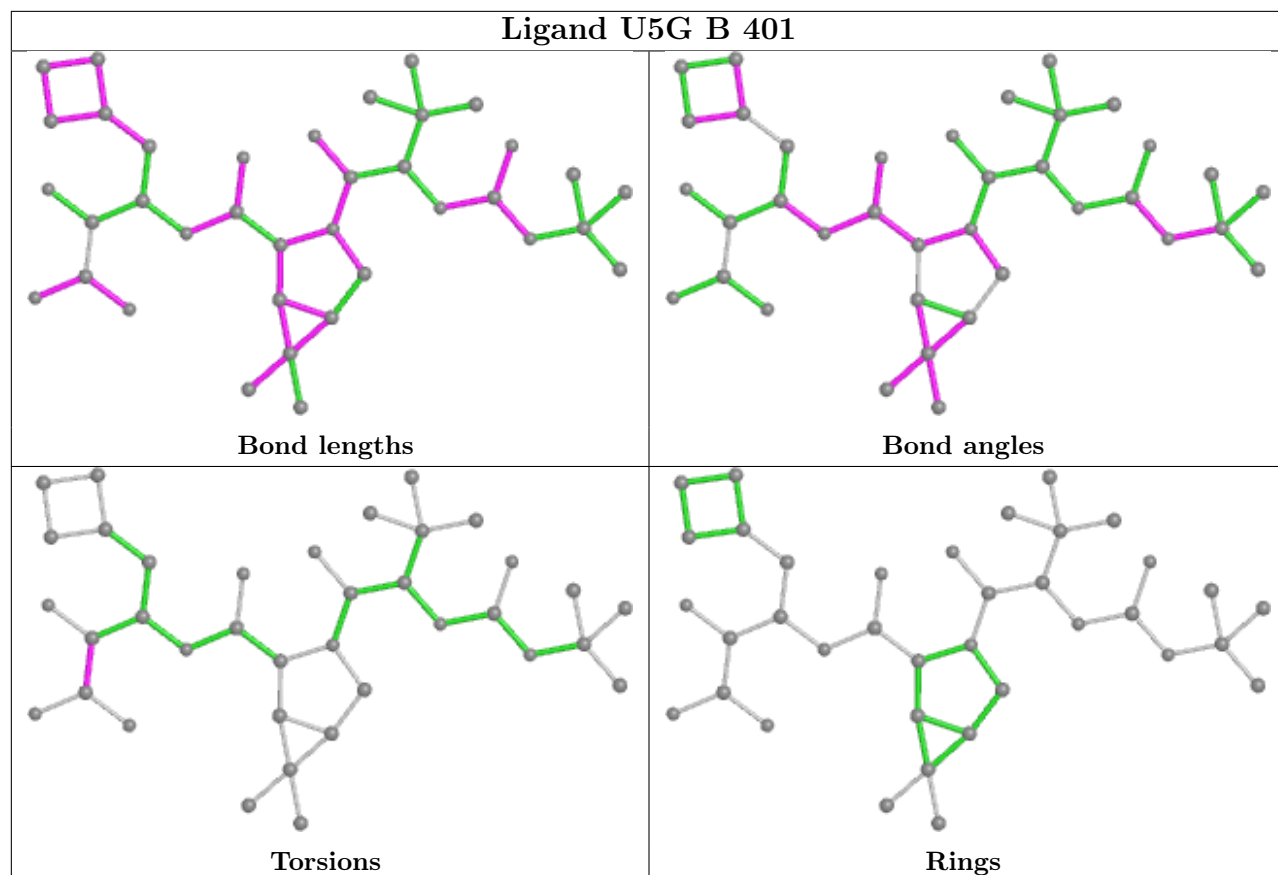
2 monomers are involved in 2 short contacts:

Mol	Chain	Res	Type	Clashes	Symm-Clashes
2	A	401	U5G	1	0
2	B	401	U5G	1	0

The following is a two-dimensional graphical depiction of Mogul quality analysis of bond lengths, bond angles, torsion angles, and ring geometry for all instances of the Ligand of Interest. In addition, ligands with molecular weight > 250 and outliers as shown on the validation Tables will

also be included. For torsion angles, if less than 5% of the Mogul distribution of torsion angles is within 10 degrees of the torsion angle in question, then that torsion angle is considered an outlier. Any bond that is central to one or more torsion angles identified as an outlier by Mogul will be highlighted in the graph. For rings, the root-mean-square deviation (RMSD) between the ring in question and similar rings identified by Mogul is calculated over all ring torsion angles. If the average RMSD is greater than 60 degrees and the minimal RMSD between the ring in question and any Mogul-identified rings is also greater than 60 degrees, then that ring is considered an outlier. The outliers are highlighted in purple. The color gray indicates Mogul did not find sufficient equivalents in the CSD to analyse the geometry.





## 5.7 Other polymers [i](#)

There are no such residues in this entry.

## 5.8 Polymer linkage issues [i](#)

There are no chain breaks in this entry.

## 6 Fit of model and data

### 6.1 Protein, DNA and RNA chains

In the following table, the column labelled ‘#RSRZ > 2’ contains the number (and percentage) of RSRZ outliers, followed by percent RSRZ outliers for the chain as percentile scores relative to all X-ray entries and entries of similar resolution. The OWAB column contains the minimum, median, 95<sup>th</sup> percentile and maximum values of the occupancy-weighted average B-factor per residue. The column labelled ‘Q < 0.9’ lists the number of (and percentage) of residues with an average occupancy less than 0.9.

Mol	Chain	Analysed	<RSRZ>	#RSRZ>2	OWAB(Å <sup>2</sup> )	Q<0.9
1	A	301/307 (98%)	0.25	13 (4%) 35 29	8, 22, 46, 98	0
1	B	301/307 (98%)	0.17	8 (2%) 54 49	8, 22, 42, 108	0
All	All	602/614 (98%)	0.21	21 (3%) 44 38	8, 22, 46, 108	0

All (21) RSRZ outliers are listed below:

Mol	Chain	Res	Type	RSRZ
1	B	154	TYR	13.9
1	A	154	TYR	9.3
1	A	227	LEU	3.6
1	B	32	LEU	3.5
1	B	24	THR	3.3
1	A	301	SER	3.2
1	A	67	LEU	3.1
1	A	223	PHE	3.0
1	A	32	LEU	2.8
1	B	155	ASP	2.8
1	A	225	THR	2.7
1	A	224	THR	2.6
1	A	93	THR	2.6
1	B	223	PHE	2.6
1	B	229	ASP	2.5
1	A	24	THR	2.5
1	B	235	MET	2.3
1	A	118	TYR	2.2
1	B	169	THR	2.2
1	A	222	ARG	2.2
1	A	155	ASP	2.1



## 6.2 Non-standard residues in protein, DNA, RNA chains [i](#)

There are no non-standard protein/DNA/RNA residues in this entry.

## 6.3 Carbohydrates [i](#)

There are no monosaccharides in this entry.

## 6.4 Ligands [i](#)

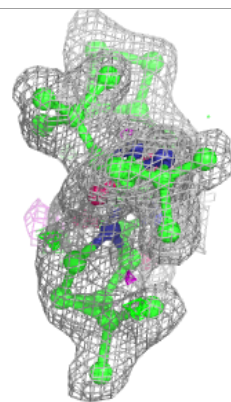
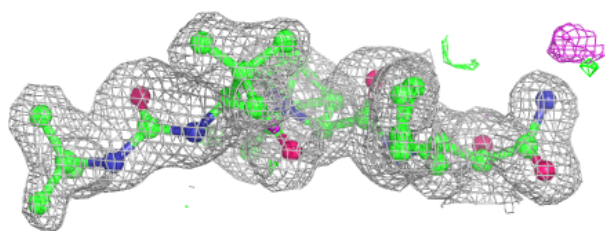
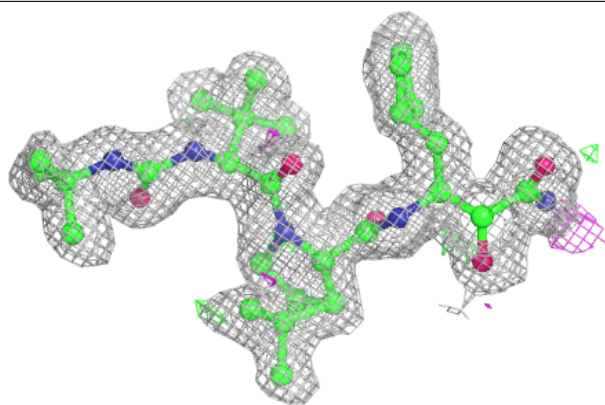
In the following table, the Atoms column lists the number of modelled atoms in the group and the number defined in the chemical component dictionary. The B-factors column lists the minimum, median, 95<sup>th</sup> percentile and maximum values of B factors of atoms in the group. The column labelled 'Q< 0.9' lists the number of atoms with occupancy less than 0.9.

Mol	Type	Chain	Res	Atoms	RSCC	RSR	B-factors(Å <sup>2</sup> )	Q<0.9
2	U5G	B	401	37/37	0.93	0.12	12,18,23,27	0
2	U5G	A	401	37/37	0.94	0.11	13,18,25,27	0

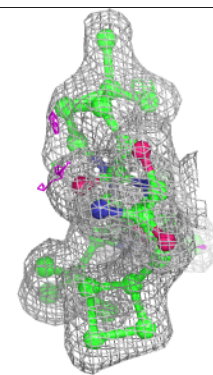
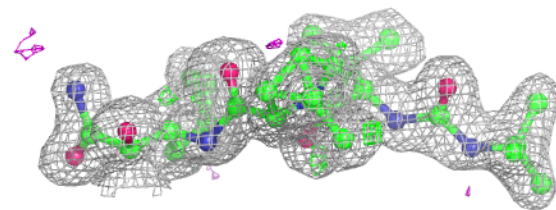
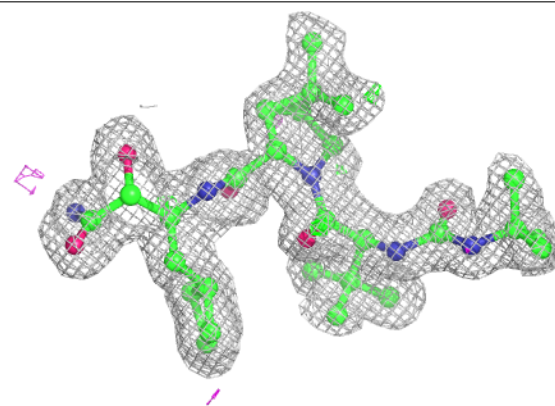
The following is a graphical depiction of the model fit to experimental electron density of all instances of the Ligand of Interest. In addition, ligands with molecular weight > 250 and outliers as shown on the geometry validation Tables will also be included. Each fit is shown from different orientation to approximate a three-dimensional view.

**Electron density around U5G B 401:**

$2mF_o-DF_c$  (at 0.7 rmsd) in gray  
 $mF_o-DF_c$  (at 3 rmsd) in purple (negative)  
and green (positive)

**Electron density around U5G A 401:**

$2mF_o-DF_c$  (at 0.7 rmsd) in gray  
 $mF_o-DF_c$  (at 3 rmsd) in purple (negative)  
and green (positive)



## 6.5 Other polymers [i](#)

There are no such residues in this entry.