



# Full wwPDB X-ray Structure Validation Report ⓘ

Aug 21, 2020 – 06:47 PM BST

PDB ID : 6BMM  
Title : Structure of human DHHC20 palmitoyltransferase, space group P21  
Authors : Rana, M.S.; Lee, C.-J.; Banerjee, A.  
Deposited on : 2017-11-15  
Resolution : 2.35 Å(reported)

This is a Full wwPDB X-ray Structure Validation Report for a publicly released PDB entry.

We welcome your comments at [validation@mail.wwpdb.org](mailto:validation@mail.wwpdb.org)

A user guide is available at

<https://www.wwpdb.org/validation/2017/XrayValidationReportHelp>

with specific help available everywhere you see the ⓘ symbol.

---

The following versions of software and data (see [references ⓘ](#)) were used in the production of this report:

MolProbity : 4.02b-467  
Mogul : 1.8.5 (274361), CSD as541be (2020)  
Xtriage (Phenix) : 1.13  
EDS : 2.13.1  
buster-report : 1.1.7 (2018)  
Percentile statistics : 20191225.v01 (using entries in the PDB archive December 25th 2019)  
Refmac : 5.8.0158  
CCP4 : 7.0.044 (Gargrove)  
Ideal geometry (proteins) : Engh & Huber (2001)  
Ideal geometry (DNA, RNA) : Parkinson et al. (1996)  
Validation Pipeline (wwPDB-VP) : 2.13.1

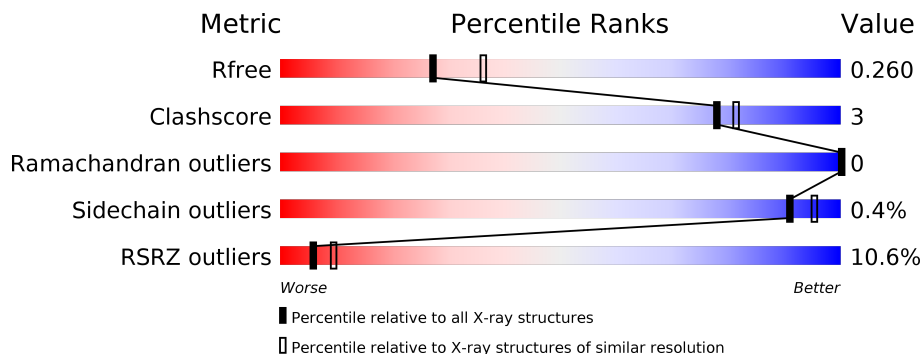
# 1 Overall quality at a glance i

The following experimental techniques were used to determine the structure:

*X-RAY DIFFRACTION*

The reported resolution of this entry is 2.35 Å.

Percentile scores (ranging between 0-100) for global validation metrics of the entry are shown in the following graphic. The table shows the number of entries on which the scores are based.



Metric	Whole archive (#Entries)	Similar resolution (#Entries, resolution range(Å))
$R_{free}$	130704	1164 (2.36-2.36)
Clashscore	141614	1232 (2.36-2.36)
Ramachandran outliers	138981	1211 (2.36-2.36)
Sidechain outliers	138945	1212 (2.36-2.36)
RSRZ outliers	127900	1150 (2.36-2.36)

The table below summarises the geometric issues observed across the polymeric chains and their fit to the electron density. The red, orange, yellow and green segments on the lower bar indicate the fraction of residues that contain outliers for  $\geq 3$ , 2, 1 and 0 types of geometric quality criteria respectively. A grey segment represents the fraction of residues that are not modelled. The numeric value for each fraction is indicated below the corresponding segment, with a dot representing fractions  $\leq 5\%$ . The upper red bar (where present) indicates the fraction of residues that have poor fit to the electron density. The numeric value is given above the bar.

Mol	Chain	Length	Quality of chain
1	A	293	
1	B	293	

The following table lists non-polymeric compounds, carbohydrate monomers and non-standard residues in protein, DNA, RNA chains that are outliers for geometric or electron-density-fit criteria:

Mol	Type	Chain	Res	Chirality	Geometry	Clashes	Electron density
5	DYD	A	407	-	-	-	X

## 2 Entry composition [i](#)

There are 6 unique types of molecules in this entry. The entry contains 4710 atoms, of which 0 are hydrogens and 0 are deuteriums.

In the tables below, the ZeroOcc column contains the number of atoms modelled with zero occupancy, the AltConf column contains the number of residues with at least one atom in alternate conformation and the Trace column contains the number of residues modelled with at most 2 atoms.

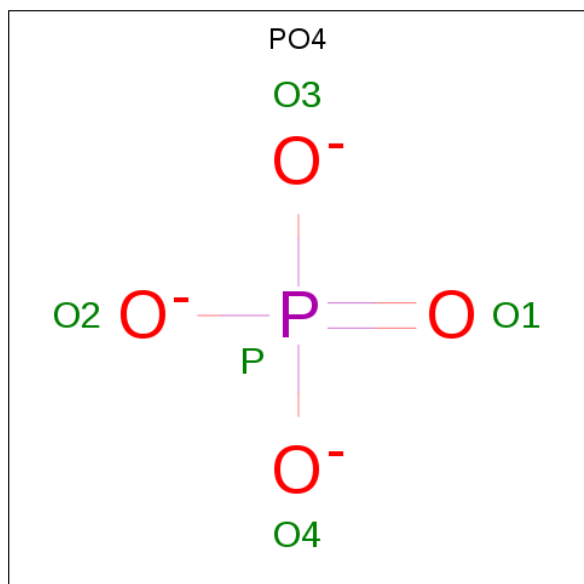
- Molecule 1 is a protein called human DHHC20 palmitoyltransferase.

Mol	Chain	Residues	Atoms					ZeroOcc	AltConf	Trace
			Total	C	N	O	S			
1	A	290	2289	1531	365	376	17	0	0	0
1	B	290	2257	1504	350	385	18	0	1	0

- Molecule 2 is ZINC ION (three-letter code: ZN) (formula: Zn).

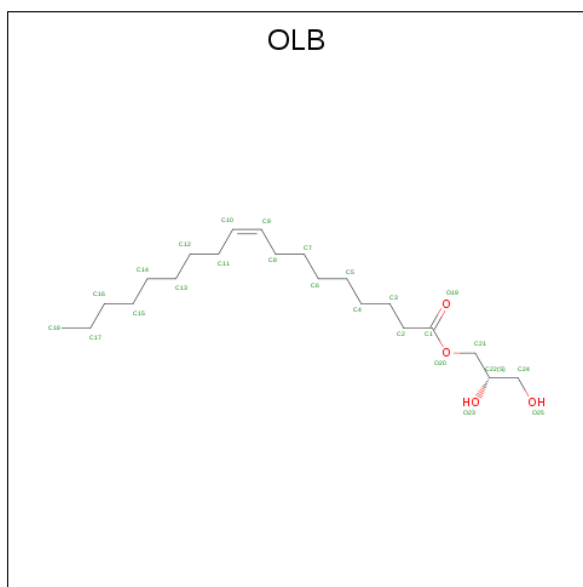
Mol	Chain	Residues	Atoms		ZeroOcc	AltConf
2	B	2	Total	Zn	0	0
			2	2		
2	A	2	Total	Zn	0	0
			2	2		

- Molecule 3 is PHOSPHATE ION (three-letter code: PO4) (formula: O<sub>4</sub>P).



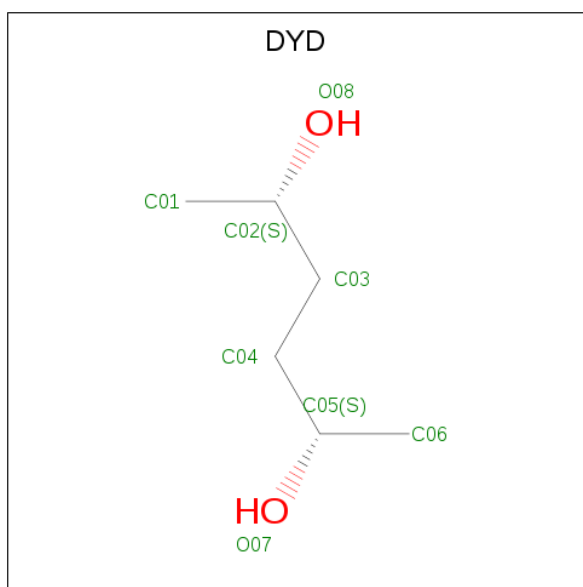
Mol	Chain	Residues	Atoms	ZeroOcc	AltConf
3	A	1	Total O P 5 4 1	0	0
3	B	1	Total O P 5 4 1	0	0

- Molecule 4 is (2S)-2,3-dihydroxypropyl (9Z)-octadec-9-enoate (three-letter code: OLB) (formula: C<sub>21</sub>H<sub>40</sub>O<sub>4</sub>).



Mol	Chain	Residues	Atoms	ZeroOcc	AltConf
4	A	1	Total C O 25 21 4	0	0
4	B	1	Total C O 25 21 4	0	0

- Molecule 5 is (2S,5S)-hexane-2,5-diol (three-letter code: DYD) (formula: C<sub>6</sub>H<sub>14</sub>O<sub>2</sub>).



Mol	Chain	Residues	Atoms			ZeroOcc	AltConf
5	A	1	Total	C	O	0	0
			8	6	2		
5	A	1	Total	C	O	0	0
			8	6	2		
5	A	1	Total	C	O	0	0
			8	6	2		
5	A	1	Total	C	O	0	0
			8	6	2		
5	A	1	Total	C	O	0	0
			8	6	2		
5	B	1	Total	C	O	0	0
			8	6	2		

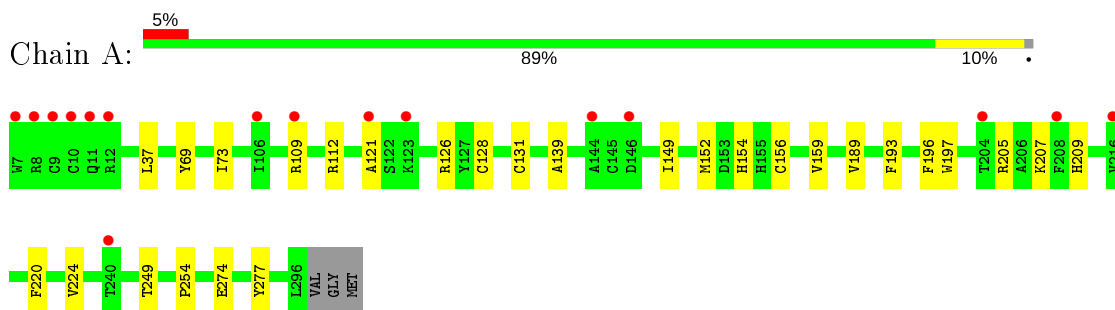
- Molecule 6 is water.

Mol	Chain	Residues	Atoms		ZeroOcc	AltConf
6	A	29	Total	O	0	0
			29	29		
6	B	23	Total	O	0	0
			23	23		

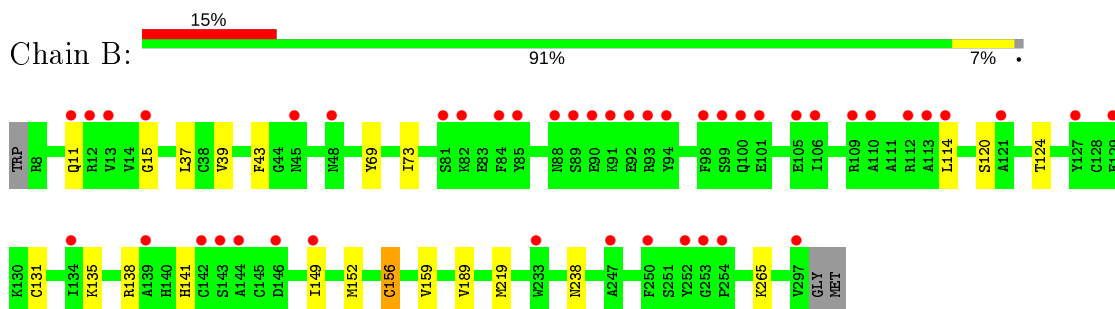
### 3 Residue-property plots [i](#)

These plots are drawn for all protein, RNA, DNA and oligosaccharide chains in the entry. The first graphic for a chain summarises the proportions of the various outlier classes displayed in the second graphic. The second graphic shows the sequence view annotated by issues in geometry and electron density. Residues are color-coded according to the number of geometric quality criteria for which they contain at least one outlier: green = 0, yellow = 1, orange = 2 and red = 3 or more. A red dot above a residue indicates a poor fit to the electron density ( $RSRZ > 2$ ). Stretches of 2 or more consecutive residues without any outlier are shown as a green connector. Residues present in the sample, but not in the model, are shown in grey.

- Molecule 1: human DHHC20 palmitoyltransferase



- Molecule 1: human DHHC20 palmitoyltransferase



## 4 Data and refinement statistics

Property	Value	Source
Space group	P 1 21 1	Depositor
Cell constants a, b, c, $\alpha$ , $\beta$ , $\gamma$	86.52Å 57.70Å 94.10Å 90.00° 115.51° 90.00°	Depositor
Resolution (Å)	28.85 – 2.35 28.85 – 2.35	Depositor EDS
% Data completeness (in resolution range)	99.7 (28.85-2.35) 89.7 (28.85-2.35)	Depositor EDS
$R_{merge}$	0.12	Depositor
$R_{sym}$	(Not available)	Depositor
$\langle I/\sigma(I) \rangle$ <sup>1</sup>	0.59 (at 2.36Å)	Xtrriage
Refinement program	PHENIX 1.12_2829	Depositor
R, $R_{free}$	0.241 , 0.260 0.241 , 0.260	Depositor DCC
$R_{free}$ test set	1991 reflections (5.66%)	wwPDB-VP
Wilson B-factor (Å <sup>2</sup> )	55.1	Xtrriage
Anisotropy	0.229	Xtrriage
Bulk solvent $k_{sol}$ (e/Å <sup>3</sup> ), $B_{sol}$ (Å <sup>2</sup> )	0.31 , 70.6	EDS
L-test for twinning <sup>2</sup>	$\langle  L  \rangle = 0.47$ , $\langle L^2 \rangle = 0.30$	Xtrriage
Estimated twinning fraction	0.030 for h,-k,-h-l	Xtrriage
$F_o, F_c$ correlation	0.94	EDS
Total number of atoms	4710	wwPDB-VP
Average B, all atoms (Å <sup>2</sup> )	80.0	wwPDB-VP

Xtrriage's analysis on translational NCS is as follows: *The largest off-origin peak in the Patterson function is 6.16% of the height of the origin peak. No significant pseudotranslation is detected.*

<sup>1</sup> Intensities estimated from amplitudes.

<sup>2</sup> Theoretical values of  $\langle |L| \rangle$ ,  $\langle L^2 \rangle$  for acentric reflections are 0.5, 0.333 respectively for untwinned datasets, and 0.375, 0.2 for perfectly twinned datasets.



## 5 Model quality [i](#)

### 5.1 Standard geometry [i](#)

Bond lengths and bond angles in the following residue types are not validated in this section: DYD, ZN, OLB, PO4, CME

The Z score for a bond length (or angle) is the number of standard deviations the observed value is removed from the expected value. A bond length (or angle) with  $|Z| > 5$  is considered an outlier worth inspection. RMSZ is the root-mean-square of all Z scores of the bond lengths (or angles).

Mol	Chain	Bond lengths		Bond angles	
		RMSZ	# Z  >5	RMSZ	# Z  >5
1	A	0.24	0/2358	0.37	0/3214
1	B	0.24	0/2323	0.38	0/3172
All	All	0.24	0/4681	0.37	0/6386

There are no bond length outliers.

There are no bond angle outliers.

There are no chirality outliers.

There are no planarity outliers.

### 5.2 Too-close contacts [i](#)

In the following table, the Non-H and H(model) columns list the number of non-hydrogen atoms and hydrogen atoms in the chain respectively. The H(added) column lists the number of hydrogen atoms added and optimized by MolProbity. The Clashes column lists the number of clashes within the asymmetric unit, whereas Symm-Clashes lists symmetry related clashes.

Mol	Chain	Non-H	H(model)	H(added)	Clashes	Symm-Clashes
1	A	2289	0	2142	15	0
1	B	2257	0	2080	11	0
2	A	2	0	0	0	0
2	B	2	0	0	0	0
3	A	5	0	0	0	0
3	B	5	0	0	1	0
4	A	25	0	40	0	0
4	B	25	0	40	0	0
5	A	40	0	0	0	0
5	B	8	0	0	0	0
6	A	29	0	0	0	0

*Continued on next page...*

*Continued from previous page...*

Mol	Chain	Non-H	H(model)	H(added)	Clashes	Symm-Clashes
6	B	23	0	0	1	0
All	All	4710	0	4302	26	0

The all-atom clashscore is defined as the number of clashes found per 1000 atoms (including hydrogen atoms). The all-atom clashscore for this structure is 3.

All (26) close contacts within the same asymmetric unit are listed below, sorted by their clash magnitude.

Atom-1	Atom-2	Interatomic distance (Å)	Clash overlap (Å)
1:B:265:LYS:NZ	6:B:501:HOH:O	2.20	0.67
1:A:156:CME:HB2	1:A:159:VAL:HG22	1.81	0.62
1:A:126:ARG:NH2	1:A:139:ALA:O	2.32	0.62
1:A:121:ALA:HA	1:A:249:THR:HG21	1.85	0.58
1:A:154:HIS:NE2	1:A:156:CME:SD	2.67	0.57
1:B:11:GLN:O	1:B:15:GLY:N	2.28	0.55
1:B:156:CME:HB2	1:B:159:VAL:HG22	1.89	0.55
1:B:131:CYS:SG	1:B:141:HIS:CE1	3.00	0.54
1:A:37:LEU:HD22	1:A:189:VAL:HG22	1.91	0.53
1:A:220:PHE:O	1:A:224:VAL:HG22	2.08	0.53
1:A:149:ILE:HB	1:A:152:MET:HB2	1.91	0.51
1:B:135:LYS:NZ	3:B:403:PO4:O1	2.44	0.50
1:B:69:TYR:CZ	1:B:73:ILE:HD11	2.47	0.49
1:A:196:PHE:O	1:A:207:LYS:NZ	2.45	0.49
1:B:149:ILE:HB	1:B:152:MET:HB2	1.94	0.49
1:A:249:THR:HA	1:A:254:PRO:HA	1.94	0.47
1:A:193:PHE:O	1:A:197:TRP:HD1	1.98	0.47
1:A:69:TYR:CZ	1:A:73:ILE:HD11	2.49	0.47
1:A:128:CYS:SG	1:A:131:CYS:HB2	2.56	0.45
1:B:120:SER:OG	1:B:124:THR:OG1	2.32	0.44
1:B:37:LEU:HD22	1:B:189:VAL:HG22	2.00	0.43
1:A:109:ARG:HA	1:A:112:ARG:HD3	1.98	0.43
1:B:39:VAL:O	1:B:43:PHE:HB3	2.18	0.43
1:B:138:ARG:NH2	1:B:238:ASN:O	2.52	0.43
1:A:274:GLU:HB2	1:A:277:TYR:HD2	1.84	0.42
1:A:205:ARG:O	1:A:209:HIS:HD2	2.03	0.41

There are no symmetry-related clashes.

## 5.3 Torsion angles [i](#)

### 5.3.1 Protein backbone [i](#)

In the following table, the Percentiles column shows the percent Ramachandran outliers of the chain as a percentile score with respect to all X-ray entries followed by that with respect to entries of similar resolution.

The Analysed column shows the number of residues for which the backbone conformation was analysed, and the total number of residues.

Mol	Chain	Analysed	Favoured	Allowed	Outliers	Percentiles	
1	A	287/293 (98%)	284 (99%)	3 (1%)	0	100	100
1	B	288/293 (98%)	281 (98%)	7 (2%)	0	100	100
All	All	575/586 (98%)	565 (98%)	10 (2%)	0	100	100

There are no Ramachandran outliers to report.

### 5.3.2 Protein sidechains [i](#)

In the following table, the Percentiles column shows the percent sidechain outliers of the chain as a percentile score with respect to all X-ray entries followed by that with respect to entries of similar resolution.

The Analysed column shows the number of residues for which the sidechain conformation was analysed, and the total number of residues.

Mol	Chain	Analysed	Rotameric	Outliers	Percentiles	
1	A	228/265 (86%)	228 (100%)	0	100	100
1	B	226/265 (85%)	223 (99%)	3 (1%)	69	80
All	All	454/530 (86%)	451 (99%)	3 (1%)	91	91

All (3) residues with a non-rotameric sidechain are listed below:

Mol	Chain	Res	Type
1	B	114	LEU
1	B	219[A]	MET
1	B	219[B]	MET

Some sidechains can be flipped to improve hydrogen bonding and reduce clashes. There are no such sidechains identified.

### 5.3.3 RNA [i](#)

There are no RNA molecules in this entry.

## 5.4 Non-standard residues in protein, DNA, RNA chains [i](#)

2 non-standard protein/DNA/RNA residues are modelled in this entry.

In the following table, the Counts columns list the number of bonds (or angles) for which Mogul statistics could be retrieved, the number of bonds (or angles) that are observed in the model and the number of bonds (or angles) that are defined in the Chemical Component Dictionary. The Link column lists molecule types, if any, to which the group is linked. The Z score for a bond length (or angle) is the number of standard deviations the observed value is removed from the expected value. A bond length (or angle) with  $|Z| > 2$  is considered an outlier worth inspection. RMSZ is the root-mean-square of all Z scores of the bond lengths (or angles).

Mol	Type	Chain	Res	Link	Bond lengths			Bond angles		
					Counts	RMSZ	# Z  > 2	Counts	RMSZ	# Z  > 2
1	CME	A	156	1	8,9,10	0.99	0	5,9,11	0.78	0
1	CME	B	156	1	8,9,10	1.69	1 (12%)	5,9,11	0.74	0

In the following table, the Chirals column lists the number of chiral outliers, the number of chiral centers analysed, the number of these observed in the model and the number defined in the Chemical Component Dictionary. Similar counts are reported in the Torsion and Rings columns. '-' means no outliers of that kind were identified.

Mol	Type	Chain	Res	Link	Chirals	Torsions	Rings
1	CME	A	156	1	-	2/5/8/10	-
1	CME	B	156	1	-	2/5/8/10	-

All (1) bond length outliers are listed below:

Mol	Chain	Res	Type	Atoms	Z	Observed(Å)	Ideal(Å)
1	B	156	CME	O-C	4.03	1.36	1.19

There are no bond angle outliers.

There are no chirality outliers.

All (4) torsion outliers are listed below:

Mol	Chain	Res	Type	Atoms
1	A	156	CME	SD-CE-CZ-OH
1	B	156	CME	SD-CE-CZ-OH

*Continued on next page...*

Continued from previous page...

Mol	Chain	Res	Type	Atoms
1	A	156	CME	N-CA-CB-SG
1	B	156	CME	CZ-CE-SD-SG

There are no ring outliers.

2 monomers are involved in 3 short contacts:

Mol	Chain	Res	Type	Clashes	Symm-Clashes
1	A	156	CME	2	0
1	B	156	CME	1	0

## 5.5 Carbohydrates [i](#)

There are no monosaccharides in this entry.

## 5.6 Ligand geometry [i](#)

Of 14 ligands modelled in this entry, 4 are monoatomic - leaving 10 for Mogul analysis.

In the following table, the Counts columns list the number of bonds (or angles) for which Mogul statistics could be retrieved, the number of bonds (or angles) that are observed in the model and the number of bonds (or angles) that are defined in the Chemical Component Dictionary. The Link column lists molecule types, if any, to which the group is linked. The Z score for a bond length (or angle) is the number of standard deviations the observed value is removed from the expected value. A bond length (or angle) with  $|Z| > 2$  is considered an outlier worth inspection. RMSZ is the root-mean-square of all Z scores of the bond lengths (or angles).

Mol	Type	Chain	Res	Link	Bond lengths			Bond angles		
					Counts	RMSZ	# Z  > 2	Counts	RMSZ	# Z  > 2
3	PO4	B	403	-	4,4,4	0.93	0	6,6,6	0.45	0
3	PO4	A	403	-	4,4,4	0.91	0	6,6,6	0.43	0
4	OLB	A	404	-	24,24,24	0.80	2 (8%)	25,25,25	0.99	1 (4%)
4	OLB	B	404	-	24,24,24	0.79	2 (8%)	25,25,25	0.98	1 (4%)
5	DYD	A	406	-	7,7,7	0.42	0	8,8,8	0.41	0
5	DYD	A	405	-	7,7,7	0.42	0	8,8,8	0.36	0
5	DYD	B	405	-	7,7,7	0.42	0	8,8,8	0.35	0
5	DYD	A	407	-	7,7,7	0.42	0	8,8,8	0.53	0
5	DYD	A	409	-	7,7,7	0.42	0	8,8,8	0.41	0
5	DYD	A	408	-	7,7,7	0.42	0	8,8,8	0.46	0

In the following table, the Chirals column lists the number of chiral outliers, the number of chiral centers analysed, the number of these observed in the model and the number defined in the

Chemical Component Dictionary. Similar counts are reported in the Torsion and Rings columns. '-' means no outliers of that kind were identified.

Mol	Type	Chain	Res	Link	Chirals	Torsions	Rings
4	OLB	A	404	-	-	8/24/24/24	-
4	OLB	B	404	-	-	11/24/24/24	-
5	DYD	A	406	-	-	0/5/5/5	-
5	DYD	A	405	-	-	0/5/5/5	-
5	DYD	B	405	-	-	0/5/5/5	-
5	DYD	A	407	-	-	1/5/5/5	-
5	DYD	A	409	-	-	4/5/5/5	-
5	DYD	A	408	-	-	3/5/5/5	-

All (4) bond length outliers are listed below:

Mol	Chain	Res	Type	Atoms	Z	Observed(Å)	Ideal(Å)
4	A	404	OLB	O20-C1	2.35	1.40	1.33
4	B	404	OLB	O20-C1	2.34	1.40	1.33
4	A	404	OLB	O20-C21	-2.11	1.40	1.45
4	B	404	OLB	O20-C21	-2.06	1.40	1.45

All (2) bond angle outliers are listed below:

Mol	Chain	Res	Type	Atoms	Z	Observed(°)	Ideal(°)
4	B	404	OLB	O20-C1-C2	2.73	120.48	111.91
4	A	404	OLB	O20-C1-C2	2.62	120.14	111.91

There are no chirality outliers.

All (27) torsion outliers are listed below:

Mol	Chain	Res	Type	Atoms
4	B	404	OLB	O20-C21-C22-O23
5	A	409	DYD	C03-C04-C05-C06
5	A	408	DYD	C01-C02-C03-C04
4	B	404	OLB	C1-C2-C3-C4
4	B	404	OLB	C2-C1-O20-C21
4	A	404	OLB	C1-C2-C3-C4
4	A	404	OLB	O20-C21-C22-O23
4	B	404	OLB	O19-C1-O20-C21
4	B	404	OLB	C12-C13-C14-C15
4	A	404	OLB	C11-C12-C13-C14
4	B	404	OLB	C13-C14-C15-C16
5	A	409	DYD	C03-C04-C05-O07

*Continued on next page...*

*Continued from previous page...*

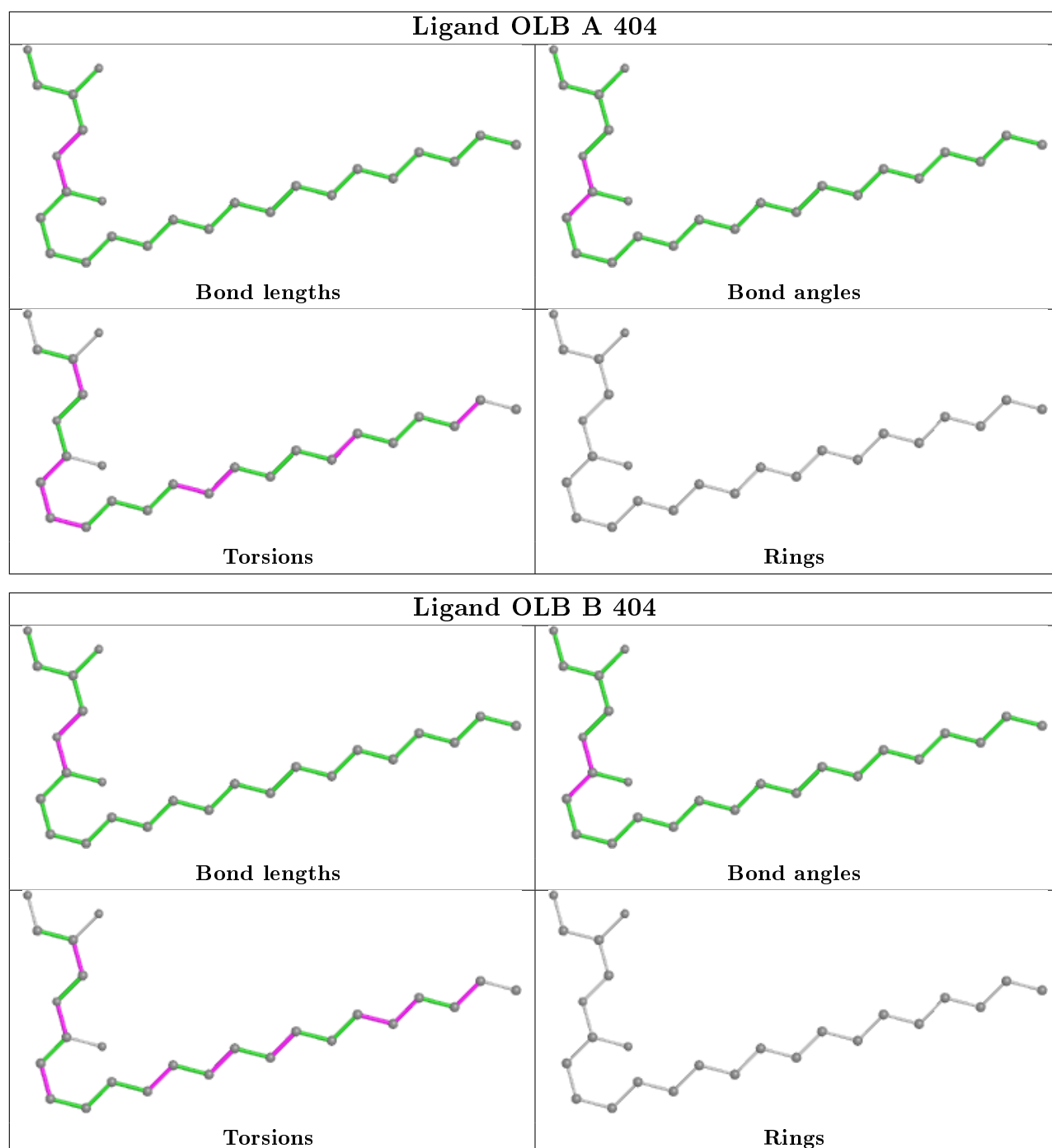
Mol	Chain	Res	Type	Atoms
5	A	408	DYD	O08-C02-C03-C04
4	B	404	OLB	C5-C6-C7-C8
4	B	404	OLB	O20-C21-C22-C24
4	A	404	OLB	C6-C7-C8-C9
4	A	404	OLB	C15-C16-C17-C18
4	B	404	OLB	C15-C16-C17-C18
4	A	404	OLB	O20-C1-C2-C3
4	A	404	OLB	C2-C3-C4-C5
5	A	409	DYD	C01-C02-C03-C04
5	A	409	DYD	O08-C02-C03-C04
4	A	404	OLB	C7-C8-C9-C10
5	A	407	DYD	C02-C03-C04-C05
4	B	404	OLB	C7-C8-C9-C10
4	B	404	OLB	C9-C10-C11-C12
5	A	408	DYD	C03-C04-C05-O07

There are no ring outliers.

1 monomer is involved in 1 short contact:

Mol	Chain	Res	Type	Clashes	Symm-Clashes
3	B	403	PO4	1	0

The following is a two-dimensional graphical depiction of Mogul quality analysis of bond lengths, bond angles, torsion angles, and ring geometry for all instances of the Ligand of Interest. In addition, ligands with molecular weight > 250 and outliers as shown on the validation Tables will also be included. For torsion angles, if less than 5% of the Mogul distribution of torsion angles is within 10 degrees of the torsion angle in question, then that torsion angle is considered an outlier. Any bond that is central to one or more torsion angles identified as an outlier by Mogul will be highlighted in the graph. For rings, the root-mean-square deviation (RMSD) between the ring in question and similar rings identified by Mogul is calculated over all ring torsion angles. If the average RMSD is greater than 60 degrees and the minimal RMSD between the ring in question and any Mogul-identified rings is also greater than 60 degrees, then that ring is considered an outlier. The outliers are highlighted in purple. The color gray indicates Mogul did not find sufficient equivalents in the CSD to analyse the geometry.



## 5.7 Other polymers [i](#)

There are no such residues in this entry.

## 5.8 Polymer linkage issues [i](#)

There are no chain breaks in this entry.



## 6 Fit of model and data

### 6.1 Protein, DNA and RNA chains

In the following table, the column labelled ‘#RSRZ> 2’ contains the number (and percentage) of RSRZ outliers, followed by percent RSRZ outliers for the chain as percentile scores relative to all X-ray entries and entries of similar resolution. The OWAB column contains the minimum, median, 95<sup>th</sup> percentile and maximum values of the occupancy-weighted average B-factor per residue. The column labelled ‘Q< 0.9’ lists the number of (and percentage) of residues with an average occupancy less than 0.9.

Mol	Chain	Analysed	<RSRZ>	#RSRZ>2	OWAB(Å <sup>2</sup> )	Q<0.9
1	A	289/293 (98%)	0.51	16 (5%) 25 36	52, 72, 99, 130	0
1	B	289/293 (98%)	1.02	45 (15%) 2 3	52, 81, 152, 202	0
All	All	578/586 (98%)	0.77	61 (10%) 6 9	52, 75, 135, 202	0

All (61) RSRZ outliers are listed below:

Mol	Chain	Res	Type	RSRZ
1	B	146	ASP	12.3
1	B	143	SER	11.0
1	B	99	SER	7.5
1	B	253	GLY	6.2
1	A	204	THR	6.1
1	B	98	PHE	6.0
1	B	94	TYR	5.8
1	B	91	LYS	5.6
1	A	9	CYS	5.5
1	A	10	CYS	5.3
1	B	297	VAL	5.3
1	B	144	ALA	4.6
1	B	113	ALA	4.4
1	B	250	PHE	4.4
1	B	233	TRP	4.3
1	B	90	GLU	4.3
1	A	208	PHE	4.2
1	B	114	LEU	4.2
1	B	101	GLU	4.1
1	B	11	GLN	3.8
1	B	106	ILE	3.7
1	B	252	TYR	3.7
1	B	92	GLU	3.6
1	B	13	VAL	3.4

*Continued on next page...*

*Continued from previous page...*

Mol	Chain	Res	Type	RSRZ
1	B	134	ILE	3.3
1	B	127	TYR	3.3
1	B	89	SER	3.2
1	A	106	ILE	3.2
1	B	84	PHE	3.2
1	B	81	SER	3.2
1	A	146	ASP	3.2
1	B	110	ALA	3.1
1	B	48	ASN	3.1
1	B	105	GLU	3.0
1	A	7	TRP	3.0
1	A	8	ARG	3.0
1	B	112	ARG	2.9
1	B	93	ARG	2.8
1	B	85	TYR	2.7
1	B	88	ASN	2.7
1	B	142	CYS	2.6
1	B	121	ALA	2.6
1	B	254	PRO	2.5
1	B	109	ARG	2.5
1	B	149	ILE	2.5
1	B	15	GLY	2.5
1	B	12	ARG	2.4
1	A	121	ALA	2.4
1	A	216	VAL	2.3
1	A	123	LYS	2.3
1	A	11	GLN	2.3
1	A	144	ALA	2.3
1	B	100	GLN	2.2
1	A	240	THR	2.2
1	B	129	GLU	2.1
1	A	109	ARG	2.1
1	B	247	ALA	2.1
1	B	82	LYS	2.1
1	B	45	ASN	2.1
1	A	12	ARG	2.0
1	B	139	ALA	2.0

## 6.2 Non-standard residues in protein, DNA, RNA chains

In the following table, the Atoms column lists the number of modelled atoms in the group and the number defined in the chemical component dictionary. The B-factors column lists the minimum,

median, 95<sup>th</sup> percentile and maximum values of B factors of atoms in the group. The column labelled 'Q< 0.9' lists the number of atoms with occupancy less than 0.9.

Mol	Type	Chain	Res	Atoms	RSCC	RSR	B-factors(Å <sup>2</sup> )	Q<0.9
1	CME	B	156	10/11	0.92	0.14	84,89,94,95	0
1	CME	A	156	10/11	0.95	0.12	72,77,85,92	0

### 6.3 Carbohydrates [i](#)

There are no monosaccharides in this entry.

### 6.4 Ligands [i](#)

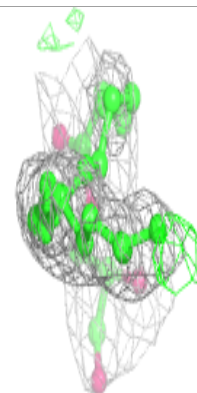
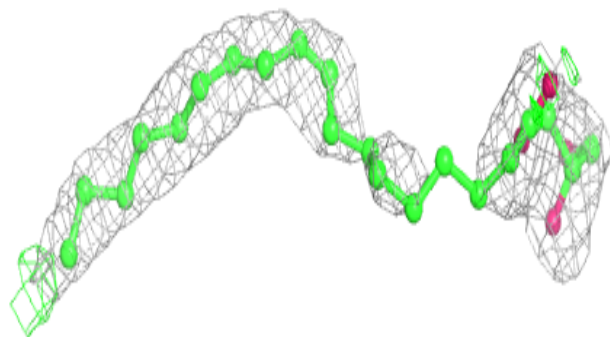
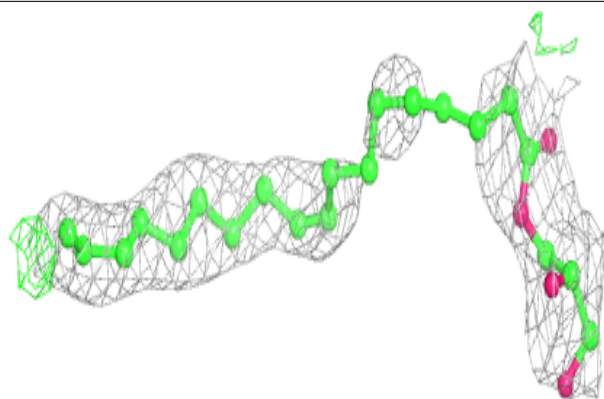
In the following table, the Atoms column lists the number of modelled atoms in the group and the number defined in the chemical component dictionary. The B-factors column lists the minimum, median, 95<sup>th</sup> percentile and maximum values of B factors of atoms in the group. The column labelled 'Q< 0.9' lists the number of atoms with occupancy less than 0.9.

Mol	Type	Chain	Res	Atoms	RSCC	RSR	B-factors(Å <sup>2</sup> )	Q<0.9
2	ZN	B	401	1/1	0.60	0.14	165,165,165,165	0
3	PO4	B	403	5/5	0.66	0.30	120,127,130,133	0
4	OLB	A	404	25/25	0.73	0.27	71,85,104,107	0
5	DYD	A	407	8/8	0.75	0.43	74,81,95,98	0
4	OLB	B	404	25/25	0.77	0.24	75,93,107,113	0
2	ZN	B	402	1/1	0.86	0.04	129,129,129,129	0
5	DYD	A	405	8/8	0.86	0.17	79,83,85,88	0
5	DYD	A	406	8/8	0.87	0.21	80,86,93,96	0
5	DYD	A	409	8/8	0.88	0.12	77,86,91,93	0
5	DYD	B	405	8/8	0.90	0.14	64,73,82,82	0
5	DYD	A	408	8/8	0.91	0.26	68,73,86,88	0
2	ZN	A	401	1/1	0.94	0.06	104,104,104,104	0
2	ZN	A	402	1/1	0.95	0.05	99,99,99,99	0
3	PO4	A	403	5/5	0.98	0.07	68,76,86,89	0

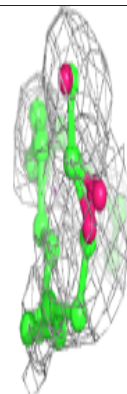
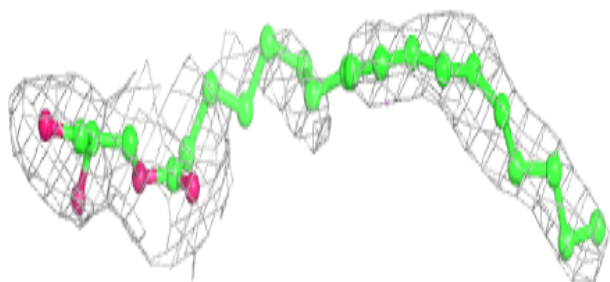
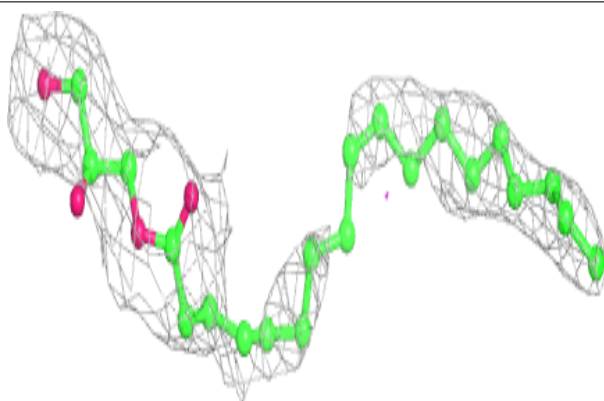
The following is a graphical depiction of the model fit to experimental electron density of all instances of the Ligand of Interest. In addition, ligands with molecular weight > 250 and outliers as shown on the geometry validation Tables will also be included. Each fit is shown from different orientation to approximate a three-dimensional view.

**Electron density around OLB A 404:**

$2mF_o-DF_c$  (at 0.7 rmsd) in gray  
 $mF_o-DF_c$  (at 3 rmsd) in purple (negative)  
and green (positive)

**Electron density around OLB B 404:**

$2mF_o-DF_c$  (at 0.7 rmsd) in gray  
 $mF_o-DF_c$  (at 3 rmsd) in purple (negative)  
and green (positive)



## 6.5 Other polymers

There are no such residues in this entry.