



Full wwPDB X-ray Structure Validation Report ⓘ

May 27, 2020 – 07:09 pm BST

PDB ID : 2BMU
Title : UMP KINASE FROM PYROCOCCLUS FURIOSUS COMPLEXED WITH ITS SUBSTRATE UMP AND ITS SUBSTRATE ANALOG AMPPNP
Authors : Marco-Marin, C.; Gil-Ortiz, F.; Rubio, V.
Deposited on : 2005-03-16
Resolution : 2.55 Å(reported)

This is a Full wwPDB X-ray Structure Validation Report for a publicly released PDB entry.

We welcome your comments at validation@mail.wwpdb.org

A user guide is available at

<https://www.wwpdb.org/validation/2017/XrayValidationReportHelp>

with specific help available everywhere you see the ⓘ symbol.

The following versions of software and data (see [references ⓘ](#)) were used in the production of this report:

MolProbity : 4.02b-467
Mogul : 1.8.5 (274361), CSD as541be (2020)
Xtriage (Phenix) : 1.13
EDS : 2.11
buster-report : 1.1.7 (2018)
Percentile statistics : 20191225.v01 (using entries in the PDB archive December 25th 2019)
Refmac : 5.8.0158
CCP4 : 7.0.044 (Gargrove)
Ideal geometry (proteins) : Engh & Huber (2001)
Ideal geometry (DNA, RNA) : Parkinson et al. (1996)
Validation Pipeline (wwPDB-VP) : 2.11

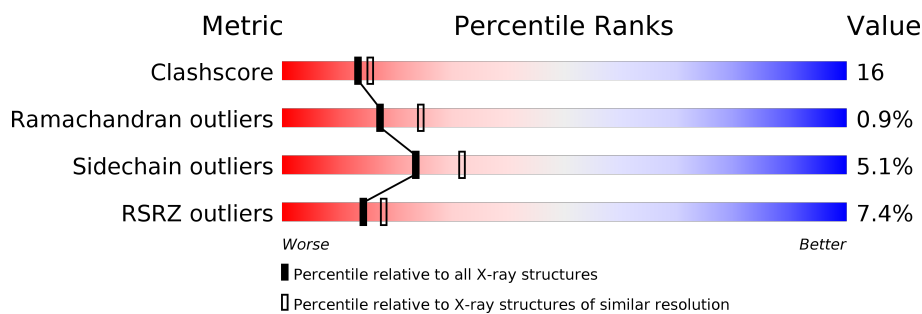
1 Overall quality at a glance

The following experimental techniques were used to determine the structure:

X-RAY DIFFRACTION

The reported resolution of this entry is 2.55 Å.

Percentile scores (ranging between 0-100) for global validation metrics of the entry are shown in the following graphic. The table shows the number of entries on which the scores are based.



Metric	Whole archive (#Entries)	Similar resolution (#Entries, resolution range(Å))
Clashscore	141614	1332 (2.56-2.52)
Ramachandran outliers	138981	1315 (2.56-2.52)
Sidechain outliers	138945	1315 (2.56-2.52)
RSRZ outliers	127900	1272 (2.56-2.52)

The table below summarises the geometric issues observed across the polymeric chains and their fit to the electron density. The red, orange, yellow and green segments on the lower bar indicate the fraction of residues that contain outliers for ≥ 3 , 2, 1 and 0 types of geometric quality criteria respectively. A grey segment represents the fraction of residues that are not modelled. The numeric value for each fraction is indicated below the corresponding segment, with a dot representing fractions $\leq 5\%$. The upper red bar (where present) indicates the fraction of residues that have poor fit to the electron density. The numeric value is given above the bar.

Mol	Chain	Length	Quality of chain
1	A	226	 3% 71% 27%
1	B	226	 12% 67% 30%

2 Entry composition [i](#)

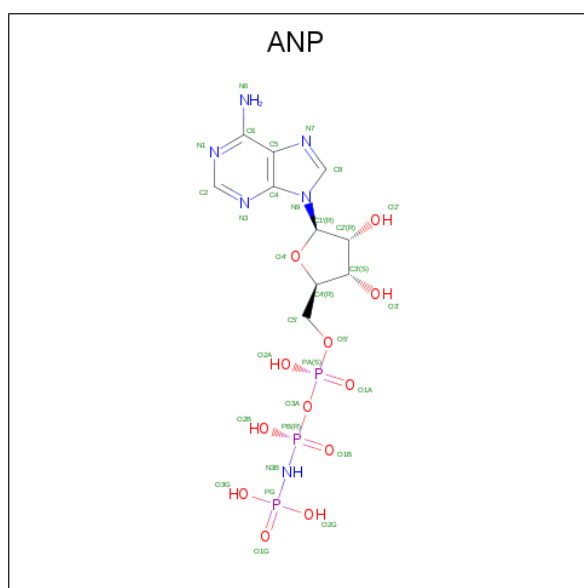
There are 5 unique types of molecules in this entry. The entry contains 3621 atoms, of which 0 are hydrogens and 0 are deuteriums.

In the tables below, the ZeroOcc column contains the number of atoms modelled with zero occupancy, the AltConf column contains the number of residues with at least one atom in alternate conformation and the Trace column contains the number of residues modelled with at most 2 atoms.

- Molecule 1 is a protein called URIDYLATE KINASE.

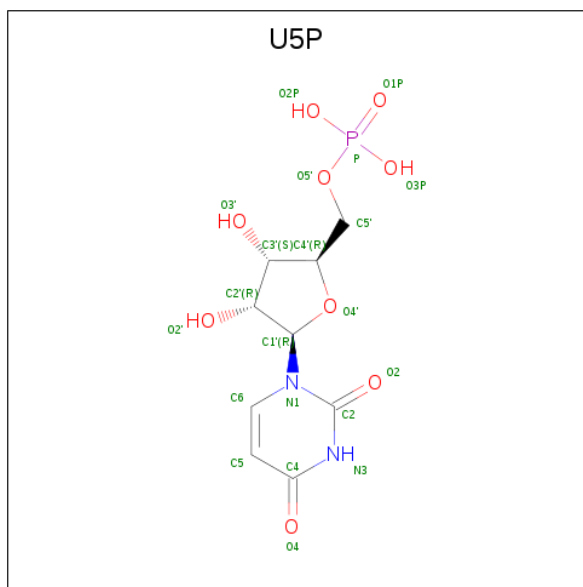
Mol	Chain	Residues	Atoms					ZeroOcc	AltConf	Trace
			Total	C	N	O	Se			
1	A	225	Total 1727	C 1113	N 288	O 322	Se 4	0	3	0
1	B	226	Total 1732	C 1116	N 285	O 327	Se 4	0	4	0

- Molecule 2 is PHOSPHOAMINOPHOSPHONIC ACID-ADENYLATE ESTER (three-letter code: ANP) (formula: $C_{10}H_{17}N_6O_{12}P_3$).



Mol	Chain	Residues	Atoms					ZeroOcc	AltConf
			Total	C	N	O	P		
2	A	1	Total 31	C 10	N 6	O 12	P 3	0	0
2	B	1	Total 31	C 10	N 6	O 12	P 3	0	0

- Molecule 3 is URIDINE-5'-MONOPHOSPHATE (three-letter code: U5P) (formula: $C_9H_{13}N_2O_9P$).



Mol	Chain	Residues	Atoms					ZeroOcc	AltConf
			Total	C	N	O	P		
3	A	1	21	9	2	9	1	0	0
3	B	1	21	9	2	9	1	0	0

- Molecule 4 is MAGNESIUM ION (three-letter code: MG) (formula: Mg).

Mol	Chain	Residues	Atoms		ZeroOcc	AltConf
			Total	Mg		
4	B	2	2	2	0	0
4	A	2	2	2	0	0

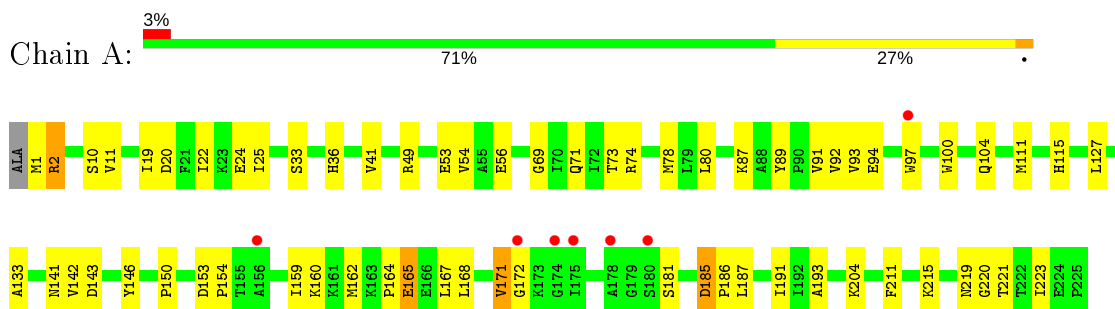
- Molecule 5 is water.

Mol	Chain	Residues	Atoms		ZeroOcc	AltConf
			Total	O		
5	A	33	33	33	0	0
5	B	21	21	21	0	0

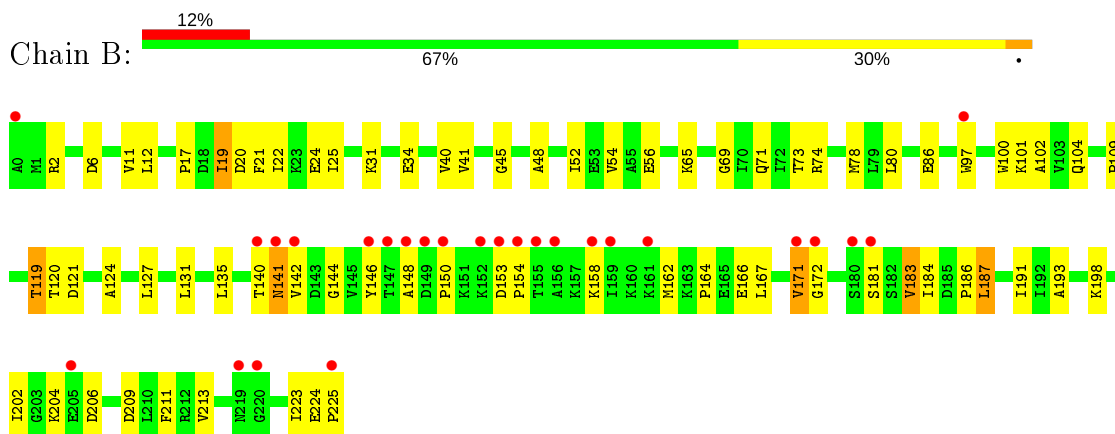
3 Residue-property plots [i](#)

These plots are drawn for all protein, RNA and DNA chains in the entry. The first graphic for a chain summarises the proportions of the various outlier classes displayed in the second graphic. The second graphic shows the sequence view annotated by issues in geometry and electron density. Residues are color-coded according to the number of geometric quality criteria for which they contain at least one outlier: green = 0, yellow = 1, orange = 2 and red = 3 or more. A red dot above a residue indicates a poor fit to the electron density ($RSRZ > 2$). Stretches of 2 or more consecutive residues without any outlier are shown as a green connector. Residues present in the sample, but not in the model, are shown in grey.

- Molecule 1: URIDYLATE KINASE



- Molecule 1: URIDYLATE KINASE



4 Data and refinement statistics

Property	Value	Source
Space group	I 2 3	Depositor
Cell constants a, b, c, α , β , γ	144.56Å 144.56Å 144.56Å 90.00° 90.00° 90.00°	Depositor
Resolution (Å)	19.67 – 2.55 45.72 – 2.55	Depositor EDS
% Data completeness (in resolution range)	99.9 (19.67-2.55) 100.0 (45.72-2.55)	Depositor EDS
R_{merge}	0.09	Depositor
R_{sym}	(Not available)	Depositor
$\langle I/\sigma(I) \rangle$ ¹	5.53 (at 2.54Å)	Xtrriage
Refinement program	CNS 1.0	Depositor
R, R_{free}	0.191 , 0.241 0.187 , (Not available)	Depositor DCC
R_{free} test set	No test flags present.	wwPDB-VP
Wilson B-factor (Å ²)	39.0	Xtrriage
Anisotropy	0.000	Xtrriage
Bulk solvent k_{sol} (e/Å ³), B_{sol} (Å ²)	0.37 , 56.3	EDS
L-test for twinning ²	$\langle L \rangle = 0.48$, $\langle L^2 \rangle = 0.31$	Xtrriage
Estimated twinning fraction	0.036 for -l,-k,-h	Xtrriage
F_o, F_c correlation	0.94	EDS
Total number of atoms	3621	wwPDB-VP
Average B, all atoms (Å ²)	39.0	wwPDB-VP

Xtrriage's analysis on translational NCS is as follows: *The largest off-origin peak in the Patterson function is 3.04% of the height of the origin peak. No significant pseudotranslation is detected.*

¹Intensities estimated from amplitudes.

²Theoretical values of $\langle |L| \rangle$, $\langle L^2 \rangle$ for acentric reflections are 0.5, 0.333 respectively for untwinned datasets, and 0.375, 0.2 for perfectly twinned datasets.

5 Model quality [i](#)

5.1 Standard geometry [i](#)

Bond lengths and bond angles in the following residue types are not validated in this section: MG, ANP, U5P

The Z score for a bond length (or angle) is the number of standard deviations the observed value is removed from the expected value. A bond length (or angle) with $|Z| > 5$ is considered an outlier worth inspection. RMSZ is the root-mean-square of all Z scores of the bond lengths (or angles).

Mol	Chain	Bond lengths		Bond angles	
		RMSZ	# Z >5	RMSZ	# Z >5
1	A	0.35	0/1754	0.61	0/2369
1	B	0.33	0/1760	0.60	0/2382
All	All	0.34	0/3514	0.60	0/4751

There are no bond length outliers.

There are no bond angle outliers.

There are no chirality outliers.

There are no planarity outliers.

5.2 Too-close contacts [i](#)

In the following table, the Non-H and H(model) columns list the number of non-hydrogen atoms and hydrogen atoms in the chain respectively. The H(added) column lists the number of hydrogen atoms added and optimized by MolProbity. The Clashes column lists the number of clashes within the asymmetric unit, whereas Symm-Clashes lists symmetry related clashes.

Mol	Chain	Non-H	H(model)	H(added)	Clashes	Symm-Clashes
1	A	1727	0	1770	52	0
1	B	1732	0	1748	69	0
2	A	31	0	13	4	0
2	B	31	0	13	4	0
3	A	21	0	11	0	0
3	B	21	0	11	0	0
4	A	2	0	0	0	0
4	B	2	0	0	0	0
5	A	33	0	0	3	0
5	B	21	0	0	4	0
All	All	3621	0	3566	115	0

The all-atom clashscore is defined as the number of clashes found per 1000 atoms (including hydrogen atoms). The all-atom clashscore for this structure is 16.

All (115) close contacts within the same asymmetric unit are listed below, sorted by their clash magnitude.

Atom-1	Atom-2	Interatomic distance (Å)	Clash overlap (Å)
1:A:167:LEU:HD22	1:A:223:ILE:HD13	1.46	0.95
1:A:141[B]:ASN:OD1	2:A:1226:ANP:H5'1	1.73	0.87
1:B:119:THR:HG22	1:B:121:ASP:H	1.40	0.85
1:A:162:MSE:HE3	1:A:221:THR:HG21	1.56	0.84
1:A:1:MSE:HB2	1:A:36:HIS:HD2	1.49	0.77
1:A:74:ARG:NH1	1:A:94:GLU:HG2	2.00	0.76
1:A:74:ARG:NH1	5:A:2008:HOH:O	2.17	0.75
1:B:78:MSE:HG2	5:B:2007:HOH:O	1.89	0.71
1:A:146:TYR:CG	1:A:150:PRO:HG3	2.27	0.70
1:A:89:TYR:HB3	5:A:2010:HOH:O	1.92	0.70
1:B:119:THR:CG2	1:B:121:ASP:H	2.04	0.69
1:A:20:ASP:O	1:A:24[B]:GLU:HG2	1.93	0.69
1:B:171:VAL:HG12	1:B:186:PRO:HG3	1.75	0.69
1:A:19:ILE:HD11	1:B:54:VAL:HG22	1.76	0.66
1:B:2:ARG:HD3	1:B:131:LEU:HB3	1.78	0.66
1:B:181:SER:HB2	2:B:2000:ANP:O2A	1.96	0.65
1:B:146:TYR:CZ	1:B:158:LYS:HB2	2.32	0.64
1:B:97[B]:TRP:CE3	1:B:101:LYS:HE3	2.35	0.62
1:B:146:TYR:CG	1:B:150:PRO:HG3	2.35	0.61
1:B:12:LEU:HD22	1:B:22:ILE:HG12	1.81	0.60
1:B:162:MSE:HE2	1:B:166:GLU:HB3	1.84	0.59
1:A:165:GLU:CD	1:A:165:GLU:H	2.06	0.58
1:A:2:ARG:HB3	1:A:133:ALA:HA	1.85	0.58
1:B:167:LEU:HD22	1:B:223:ILE:HG12	1.85	0.58
1:A:22:ILE:O	1:A:25:ILE:HG22	2.04	0.57
1:B:97[B]:TRP:HE3	1:B:101:LYS:HE3	1.69	0.57
1:B:141:ASN:H	1:B:141:ASN:ND2	2.02	0.56
1:A:74:ARG:HG2	1:A:74:ARG:HH11	1.69	0.56
1:B:223:ILE:H	1:B:223:ILE:HD12	1.70	0.56
1:B:119:THR:HG23	1:B:120:THR:N	2.21	0.56
1:A:172:GLY:HA2	1:A:186:PRO:HB3	1.87	0.56
1:B:164:PRO:HB3	1:B:193:ALA:HA	1.88	0.55
1:B:52:ILE:HG23	1:B:65:LYS:HB3	1.88	0.54
1:B:162:MSE:HE2	1:B:166:GLU:C	2.27	0.54
1:B:11:VAL:HG12	1:B:21:PHE:CE2	2.43	0.54
1:B:119:THR:HG22	1:B:121:ASP:N	2.19	0.53
1:B:162:MSE:HE2	1:B:166:GLU:CB	2.38	0.53

Continued on next page...

Continued from previous page...

Atom-1	Atom-2	Interatomic distance (Å)	Clash overlap (Å)
1:A:142:VAL:HG21	2:A:1226:ANP:H2	1.91	0.52
1:B:119:THR:CG2	1:B:120:THR:N	2.73	0.52
1:A:171:VAL:HG23	1:A:172:GLY:N	2.25	0.52
1:A:91:VAL:HG22	1:A:92:VAL:N	2.25	0.52
1:A:10:SER:OG	1:A:141[A]:ASN:ND2	2.43	0.51
1:A:71:GLN:CD	1:B:71:GLN:HE22	2.12	0.51
1:A:71:GLN:OE1	1:B:71:GLN:NE2	2.43	0.51
1:A:1:MSE:HB2	1:A:36:HIS:CD2	2.38	0.51
1:B:97[A]:TRP:O	1:B:100:TRP:HB3	2.10	0.51
1:B:31:LYS:O	1:B:34:GLU:HB2	2.11	0.51
1:B:183:VAL:O	1:B:184:ILE:HG13	2.10	0.50
1:B:78:MSE:HE3	5:B:2007:HOH:O	2.10	0.50
1:B:202:ILE:HD13	1:B:213:VAL:HG11	1.92	0.50
1:B:223:ILE:N	1:B:223:ILE:HD12	2.26	0.50
1:A:54:VAL:HG22	1:B:19:ILE:HD11	1.94	0.50
1:A:69:GLY:O	1:A:73:THR:HG23	2.12	0.50
1:B:12:LEU:CD2	1:B:22:ILE:HG12	2.41	0.50
1:B:144:GLY:O	2:B:2000:ANP:H2	2.13	0.49
1:B:162:MSE:CE	1:B:166:GLU:HB3	2.42	0.49
1:B:97[B]:TRP:O	1:B:100:TRP:HB3	2.12	0.49
1:A:93:VAL:HB	1:A:111:MSE:HG2	1.95	0.49
1:B:140:THR:OG1	1:B:141:ASN:N	2.46	0.48
1:B:97[B]:TRP:CZ3	1:B:101:LYS:NZ	2.80	0.48
1:B:187:LEU:O	1:B:191:ILE:HG12	2.14	0.48
1:B:153:ASP:OD1	1:B:154:PRO:HD2	2.14	0.48
1:A:74:ARG:HH12	1:A:94:GLU:HG2	1.78	0.48
1:A:74:ARG:CZ	1:A:94:GLU:HG2	2.43	0.47
1:B:22:ILE:HA	1:B:25:ILE:HG22	1.97	0.47
1:A:153:ASP:HA	1:A:154:PRO:HD3	1.80	0.46
1:A:160:LYS:NZ	1:A:219:ASN:HA	2.31	0.46
1:B:48:ALA:O	1:B:52:ILE:HG13	2.15	0.46
1:A:10:SER:CB	1:A:141[A]:ASN:HD21	2.28	0.46
1:A:185:ASP:OD2	1:A:185:ASP:C	2.54	0.46
1:A:187:LEU:O	1:A:191:ILE:HG12	2.15	0.46
1:B:148:ALA:O	1:B:150:PRO:HD3	2.16	0.46
1:A:11:VAL:HG13	1:A:204:LYS:HG2	1.98	0.45
1:A:49:ARG:NH2	1:A:181:SER:OG	2.49	0.45
1:B:97[B]:TRP:HZ3	1:B:101:LYS:NZ	2.13	0.45
1:A:100:TRP:O	1:A:104:GLN:HG2	2.17	0.45
1:A:211:PHE:O	1:A:215:LYS:HG3	2.17	0.45
1:B:209:ASP:O	1:B:213:VAL:HG23	2.15	0.45

Continued on next page...

Continued from previous page...

Atom-1	Atom-2	Interatomic distance (Å)	Clash overlap (Å)
1:B:56:GLU:OE1	1:B:56:GLU:HA	2.16	0.45
1:A:143:ASP:O	1:A:220:GLY:HA2	2.16	0.45
1:A:97[B]:TRP:O	1:A:100:TRP:HB3	2.17	0.45
1:A:78:MSE:HE2	1:A:92:VAL:HG21	1.98	0.45
1:B:20:ASP:O	1:B:24[A]:GLU:HB2	2.17	0.45
1:B:102:ALA:HB3	1:B:109:PRO:HB3	1.98	0.45
1:A:33:SER:OG	1:A:87:LYS:HE2	2.17	0.45
1:A:159:ILE:CG2	1:A:162:MSE:HE2	2.48	0.44
1:A:54:VAL:HG21	1:B:17:PRO:HG2	1.98	0.44
1:B:164:PRO:CB	1:B:193:ALA:HA	2.48	0.43
1:B:69:GLY:O	1:B:73:THR:HG23	2.19	0.43
1:B:198:LYS:HE2	1:B:224:GLU:OE2	2.18	0.43
1:A:141[B]:ASN:HD21	2:A:1226:ANP:PA	2.41	0.43
1:A:167:LEU:O	1:A:171:VAL:HG22	2.18	0.43
1:B:146:TYR:CE2	1:B:158:LYS:HB2	2.54	0.43
1:B:142:VAL:HG22	1:B:144:GLY:H	1.84	0.43
1:A:53:GLU:O	1:A:56:GLU:HB3	2.19	0.43
1:B:21:PHE:CE1	1:B:204:LYS:HG3	2.53	0.43
1:B:45:GLY:N	2:B:2000:ANP:O3G	2.52	0.43
1:A:146:TYR:CD1	1:A:150:PRO:HG3	2.54	0.42
1:B:142:VAL:HG21	2:B:2000:ANP:H2	2.01	0.42
1:B:181:SER:HB3	5:B:2021:HOH:O	2.19	0.42
1:B:224:GLU:HA	1:B:225:PRO:HD3	1.92	0.42
1:B:40:VAL:HG12	1:B:41:VAL:N	2.35	0.42
1:A:142:VAL:HG13	2:A:1226:ANP:H3'	2.02	0.42
1:A:204:LYS:HG3	5:A:2028:HOH:O	2.20	0.41
1:B:74:ARG:O	1:B:78:MSE:HG3	2.19	0.41
1:A:164:PRO:HB3	1:A:193:ALA:HA	2.01	0.41
1:B:78:MSE:CE	5:B:2007:HOH:O	2.69	0.41
1:A:78:MSE:CE	1:B:71:GLN:HG2	2.51	0.41
1:A:71:GLN:NE2	1:A:71:GLN:HA	2.36	0.41
1:B:6:ASP:OD2	1:B:121:ASP:OD1	2.38	0.41
1:B:102:ALA:CB	1:B:109:PRO:HB3	2.51	0.40
1:B:119:THR:HG23	1:B:120:THR:H	1.86	0.40
1:B:100:TRP:O	1:B:104:GLN:HG2	2.21	0.40
1:B:6:ASP:HB2	1:B:124:ALA:CB	2.51	0.40
1:A:185:ASP:HA	1:A:186:PRO:HD3	1.98	0.40

There are no symmetry-related clashes.

5.3 Torsion angles [i](#)

5.3.1 Protein backbone [i](#)

In the following table, the Percentiles column shows the percent Ramachandran outliers of the chain as a percentile score with respect to all X-ray entries followed by that with respect to entries of similar resolution.

The Analysed column shows the number of residues for which the backbone conformation was analysed, and the total number of residues.

Mol	Chain	Analysed	Favoured	Allowed	Outliers	Percentiles	
1	A	226/226 (100%)	211 (93%)	14 (6%)	1 (0%)	34	46
1	B	228/226 (101%)	215 (94%)	10 (4%)	3 (1%)	12	16
All	All	454/452 (100%)	426 (94%)	24 (5%)	4 (1%)	17	24

All (4) Ramachandran outliers are listed below:

Mol	Chain	Res	Type
1	B	171	VAL
1	A	171	VAL
1	B	19	ILE
1	B	172	GLY

5.3.2 Protein sidechains [i](#)

In the following table, the Percentiles column shows the percent sidechain outliers of the chain as a percentile score with respect to all X-ray entries followed by that with respect to entries of similar resolution.

The Analysed column shows the number of residues for which the sidechain conformation was analysed, and the total number of residues.

Mol	Chain	Analysed	Rotameric	Outliers	Percentiles	
1	A	181/181 (100%)	173 (96%)	8 (4%)	28	38
1	B	180/181 (99%)	170 (94%)	10 (6%)	21	28
All	All	361/362 (100%)	343 (95%)	18 (5%)	24	33

All (18) residues with a non-rotameric sidechain are listed below:

Mol	Chain	Res	Type
1	A	2	ARG
1	A	41	VAL

Continued on next page...

Continued from previous page...

Mol	Chain	Res	Type
1	A	80	LEU
1	A	115	HIS
1	A	127	LEU
1	A	165	GLU
1	A	168	LEU
1	A	185	ASP
1	B	80	LEU
1	B	86	GLU
1	B	119	THR
1	B	127	LEU
1	B	135	LEU
1	B	141	ASN
1	B	183	VAL
1	B	187	LEU
1	B	206	ASP
1	B	211	PHE

Some sidechains can be flipped to improve hydrogen bonding and reduce clashes. All (6) such sidechains are listed below:

Mol	Chain	Res	Type
1	A	36	HIS
1	A	71	GLN
1	A	219	ASN
1	B	71	GLN
1	B	118	HIS
1	B	141	ASN

5.3.3 RNA [i](#)

There are no RNA molecules in this entry.

5.4 Non-standard residues in protein, DNA, RNA chains [i](#)

There are no non-standard protein/DNA/RNA residues in this entry.

5.5 Carbohydrates [i](#)

There are no carbohydrates in this entry.

5.6 Ligand geometry i

Of 8 ligands modelled in this entry, 4 are monoatomic - leaving 4 for Mogul analysis.

In the following table, the Counts columns list the number of bonds (or angles) for which Mogul statistics could be retrieved, the number of bonds (or angles) that are observed in the model and the number of bonds (or angles) that are defined in the Chemical Component Dictionary. The Link column lists molecule types, if any, to which the group is linked. The Z score for a bond length (or angle) is the number of standard deviations the observed value is removed from the expected value. A bond length (or angle) with $|Z| > 2$ is considered an outlier worth inspection. RMSZ is the root-mean-square of all Z scores of the bond lengths (or angles).

Mol	Type	Chain	Res	Link	Bond lengths			Bond angles		
					Counts	RMSZ	# Z > 2	Counts	RMSZ	# Z > 2
3	U5P	B	2001	-	18,22,22	4.64	6 (33%)	21,33,33	2.24	6 (28%)
2	ANP	B	2000	4	29,33,33	2.70	13 (44%)	31,52,52	3.09	17 (54%)
2	ANP	A	1226	4	29,33,33	2.71	12 (41%)	31,52,52	3.13	17 (54%)
3	U5P	A	1227	-	18,22,22	4.60	6 (33%)	21,33,33	2.25	6 (28%)

In the following table, the Chirals column lists the number of chiral outliers, the number of chiral centers analysed, the number of these observed in the model and the number defined in the Chemical Component Dictionary. Similar counts are reported in the Torsion and Rings columns. '-' means no outliers of that kind were identified.

Mol	Type	Chain	Res	Link	Chirals	Torsions	Rings
3	U5P	B	2001	-	-	0/8/26/26	0/2/2/2
2	ANP	B	2000	4	-	10/14/38/38	0/3/3/3
2	ANP	A	1226	4	-	9/14/38/38	0/3/3/3
3	U5P	A	1227	-	-	0/8/26/26	0/2/2/2

All (37) bond length outliers are listed below:

Mol	Chain	Res	Type	Atoms	Z	Observed(Å)	Ideal(Å)
3	B	2001	U5P	O4-C4	11.53	1.53	1.24
3	A	1227	U5P	O4-C4	11.53	1.53	1.24
3	A	1227	U5P	C6-N1	11.17	1.49	1.35
3	B	2001	U5P	C6-N1	10.92	1.49	1.35
3	B	2001	U5P	O4'-C1'	7.59	1.51	1.41
3	A	1227	U5P	O4'-C1'	7.19	1.51	1.41
2	B	2000	ANP	C2-N3	6.01	1.41	1.32
2	A	1226	ANP	C2-N3	5.88	1.41	1.32
3	B	2001	U5P	C4-N3	5.72	1.43	1.33
3	A	1227	U5P	C4-N3	5.70	1.43	1.33
2	B	2000	ANP	C5'-C4'	-5.66	1.34	1.51

Continued on next page...

Continued from previous page...

Mol	Chain	Res	Type	Atoms	Z	Observed(Å)	Ideal(Å)
2	A	1226	ANP	C5'-C4'	-5.19	1.35	1.51
2	A	1226	ANP	O2'-C2'	5.06	1.54	1.43
2	B	2000	ANP	O2'-C2'	4.94	1.54	1.43
3	B	2001	U5P	C2'-C1'	4.31	1.60	1.53
2	A	1226	ANP	C8-N7	-4.20	1.27	1.34
2	B	2000	ANP	PB-O2B	-4.05	1.45	1.56
2	A	1226	ANP	O4'-C4'	-4.03	1.36	1.45
2	B	2000	ANP	C8-N7	-4.00	1.27	1.34
2	A	1226	ANP	PB-O2B	-3.98	1.46	1.56
3	A	1227	U5P	C2'-C1'	3.97	1.59	1.53
2	B	2000	ANP	O4'-C4'	-3.68	1.36	1.45
2	A	1226	ANP	O4'-C1'	3.32	1.45	1.41
2	A	1226	ANP	C2-N1	3.13	1.39	1.33
2	B	2000	ANP	O4'-C1'	3.12	1.45	1.41
2	B	2000	ANP	C2-N1	3.11	1.39	1.33
2	B	2000	ANP	C2'-C3'	2.86	1.61	1.53
2	B	2000	ANP	PB-N3B	-2.86	1.55	1.63
2	A	1226	ANP	PB-N3B	-2.80	1.56	1.63
2	A	1226	ANP	C2'-C3'	2.70	1.60	1.53
2	B	2000	ANP	PG-O2G	-2.63	1.49	1.56
3	B	2001	U5P	O4'-C4'	-2.59	1.39	1.45
2	A	1226	ANP	PG-O2G	-2.56	1.49	1.56
2	A	1226	ANP	C5-N7	-2.35	1.31	1.39
3	A	1227	U5P	O4'-C4'	-2.26	1.40	1.45
2	B	2000	ANP	C5-N7	-2.25	1.31	1.39
2	B	2000	ANP	PA-O2A	-2.18	1.45	1.55

All (46) bond angle outliers are listed below:

Mol	Chain	Res	Type	Atoms	Z	Observed(°)	Ideal(°)
2	B	2000	ANP	C4-C5-N7	7.65	117.37	109.40
2	A	1226	ANP	C4-C5-N7	7.62	117.34	109.40
3	B	2001	U5P	O2'-C2'-C3'	7.56	136.28	111.82
3	A	1227	U5P	O2'-C2'-C3'	7.47	136.00	111.82
2	A	1226	ANP	O5'-C5'-C4'	7.18	133.69	108.99
2	B	2000	ANP	O5'-C5'-C4'	6.80	132.38	108.99
2	B	2000	ANP	N3-C2-N1	-6.26	118.89	128.68
2	A	1226	ANP	N3-C2-N1	-6.20	118.99	128.68
2	A	1226	ANP	O3'-C3'-C4'	4.31	123.51	111.05
3	A	1227	U5P	O4'-C1'-C2'	-4.25	100.71	106.93
2	A	1226	ANP	O2B-PB-O1B	4.20	118.72	109.92
3	B	2001	U5P	O4'-C1'-C2'	-4.16	100.84	106.93

Continued on next page...

Continued from previous page...

Mol	Chain	Res	Type	Atoms	Z	Observed(°)	Ideal(°)
2	B	2000	ANP	O2B-PB-O1B	4.15	118.61	109.92
2	A	1226	ANP	O4'-C4'-C5'	-3.96	96.34	109.37
2	B	2000	ANP	O3'-C3'-C4'	3.96	122.50	111.05
2	B	2000	ANP	O4'-C4'-C5'	-3.84	96.75	109.37
2	A	1226	ANP	O1B-PB-N3B	-3.80	106.17	111.77
2	B	2000	ANP	O1B-PB-N3B	-3.51	106.60	111.77
2	B	2000	ANP	C2'-C3'-C4'	-3.48	95.88	102.64
2	A	1226	ANP	C2'-C3'-C4'	-3.25	96.32	102.64
2	B	2000	ANP	O3'-C3'-C2'	3.18	122.10	111.82
2	B	2000	ANP	C3'-C2'-C1'	2.98	105.46	100.98
2	A	1226	ANP	O3'-C3'-C2'	2.92	121.25	111.82
2	A	1226	ANP	O1G-PG-N3B	2.92	116.06	111.77
2	A	1226	ANP	C3'-C2'-C1'	2.88	105.31	100.98
2	B	2000	ANP	O1G-PG-N3B	2.80	115.89	111.77
2	B	2000	ANP	C2-N1-C6	2.70	123.38	118.75
2	B	2000	ANP	C5-C6-N6	-2.70	116.25	120.35
2	A	1226	ANP	C2-N1-C6	2.66	123.31	118.75
2	B	2000	ANP	N6-C6-N1	2.63	124.04	118.57
2	A	1226	ANP	PA-O5'-C5'	2.59	136.89	121.68
2	A	1226	ANP	N6-C6-N1	2.56	123.89	118.57
2	B	2000	ANP	PA-O5'-C5'	2.48	136.25	121.68
2	A	1226	ANP	C5-C6-N6	-2.48	116.58	120.35
3	A	1227	U5P	C5'-C4'-C3'	2.26	123.64	115.18
2	B	2000	ANP	O3A-PB-N3B	2.25	112.84	106.59
2	A	1226	ANP	O3A-PB-N3B	2.22	112.76	106.59
3	B	2001	U5P	C5'-C4'-C3'	2.20	123.43	115.18
3	A	1227	U5P	C2'-C3'-C4'	-2.19	98.39	102.64
3	A	1227	U5P	O3P-P-O5'	-2.14	101.04	106.73
2	A	1226	ANP	O2G-PG-O1G	2.13	118.81	113.45
2	B	2000	ANP	O2G-PG-O1G	2.13	118.80	113.45
3	A	1227	U5P	O2P-P-O1P	2.11	118.96	110.68
3	B	2001	U5P	O3P-P-O5'	-2.11	101.11	106.73
3	B	2001	U5P	O2P-P-O1P	2.11	118.93	110.68
3	B	2001	U5P	C5-C4-N3	-2.04	118.83	123.31

There are no chirality outliers.

All (19) torsion outliers are listed below:

Mol	Chain	Res	Type	Atoms
2	B	2000	ANP	PB-N3B-PG-O1G
2	B	2000	ANP	PA-O3A-PB-O1B
2	B	2000	ANP	PA-O3A-PB-O2B

Continued on next page...

Continued from previous page...

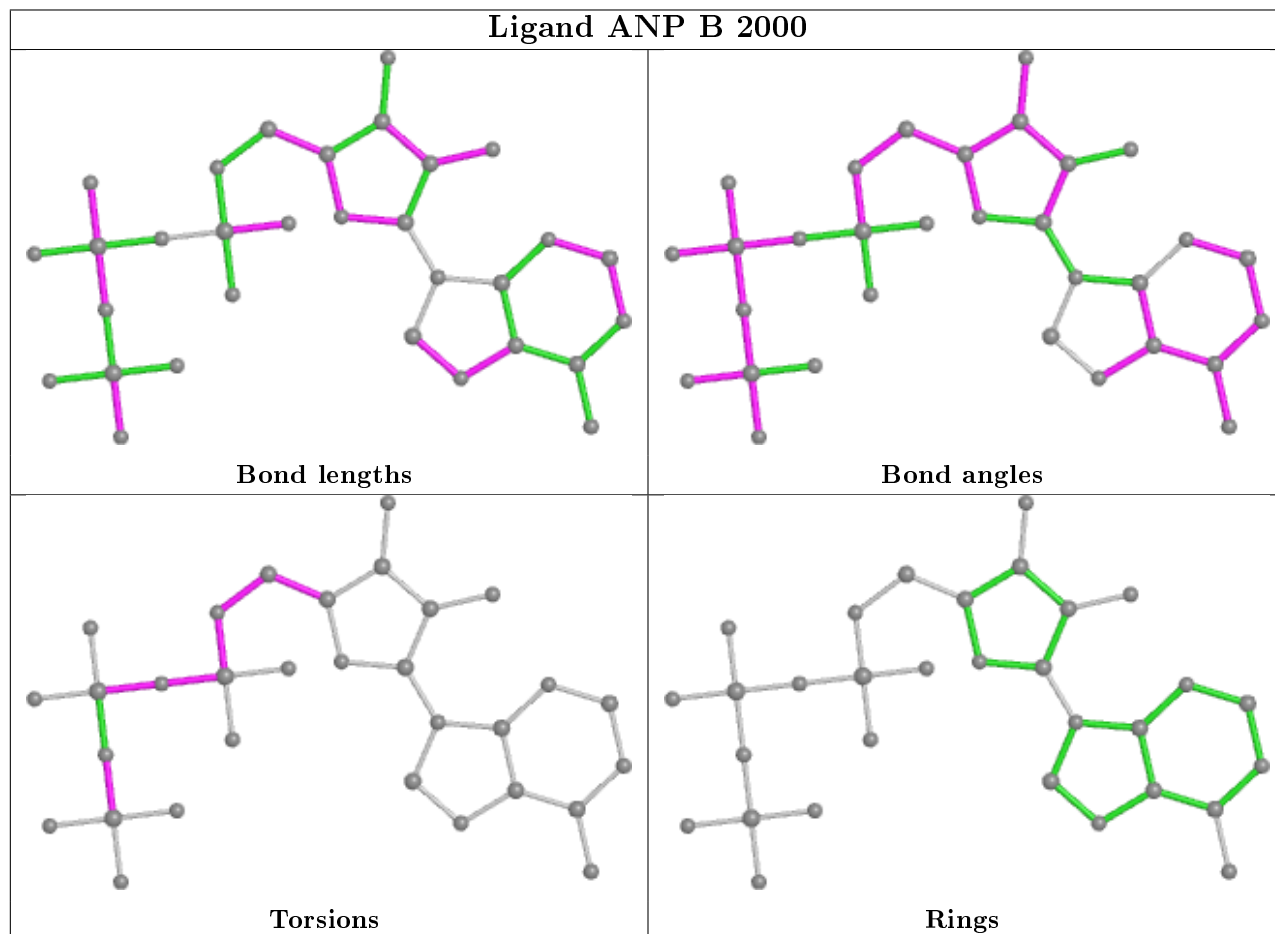
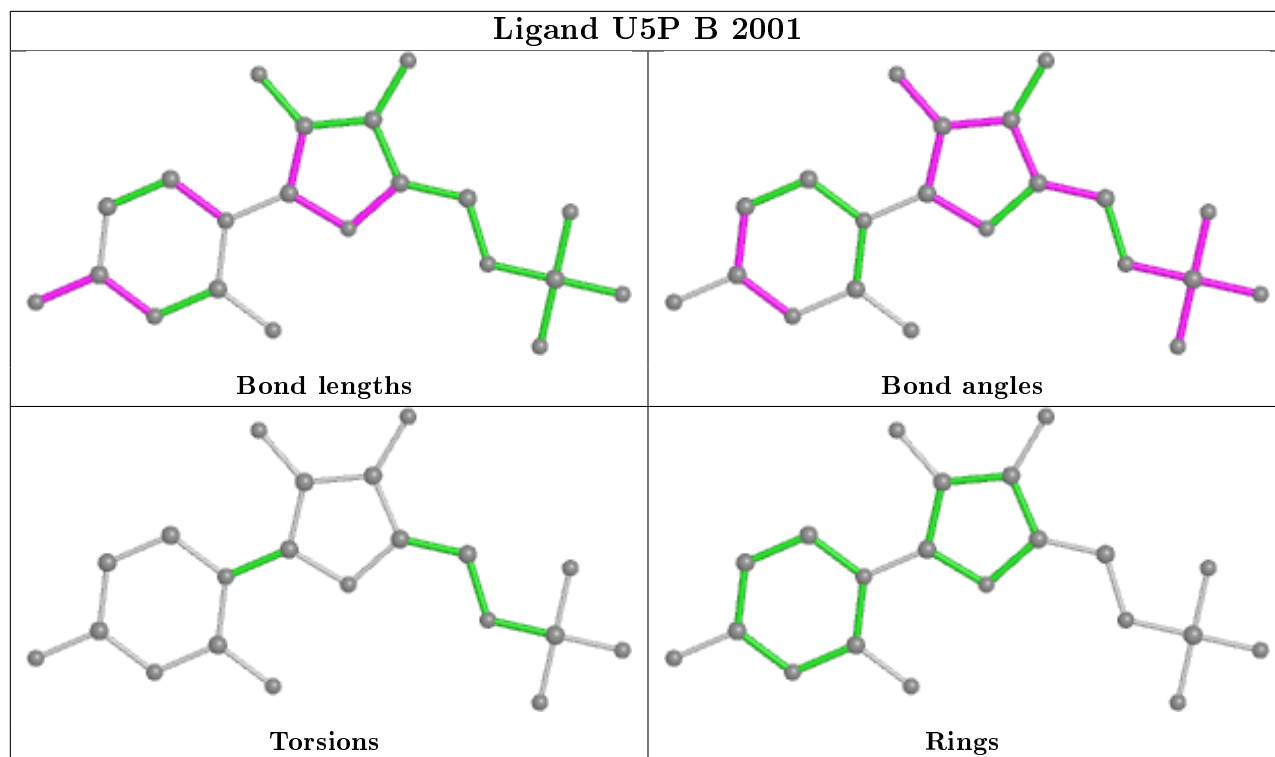
Mol	Chain	Res	Type	Atoms
2	B	2000	ANP	C5'-O5'-PA-O1A
2	B	2000	ANP	C5'-O5'-PA-O2A
2	B	2000	ANP	C4'-C5'-O5'-PA
2	A	1226	ANP	PB-N3B-PG-O1G
2	A	1226	ANP	PA-O3A-PB-O1B
2	A	1226	ANP	PA-O3A-PB-O2B
2	A	1226	ANP	C5'-O5'-PA-O1A
2	A	1226	ANP	C5'-O5'-PA-O2A
2	A	1226	ANP	C4'-C5'-O5'-PA
2	A	1226	ANP	C3'-C4'-C5'-O5'
2	B	2000	ANP	C3'-C4'-C5'-O5'
2	A	1226	ANP	O4'-C4'-C5'-O5'
2	B	2000	ANP	O4'-C4'-C5'-O5'
2	B	2000	ANP	C5'-O5'-PA-O3A
2	A	1226	ANP	C5'-O5'-PA-O3A
2	B	2000	ANP	PB-O3A-PA-O1A

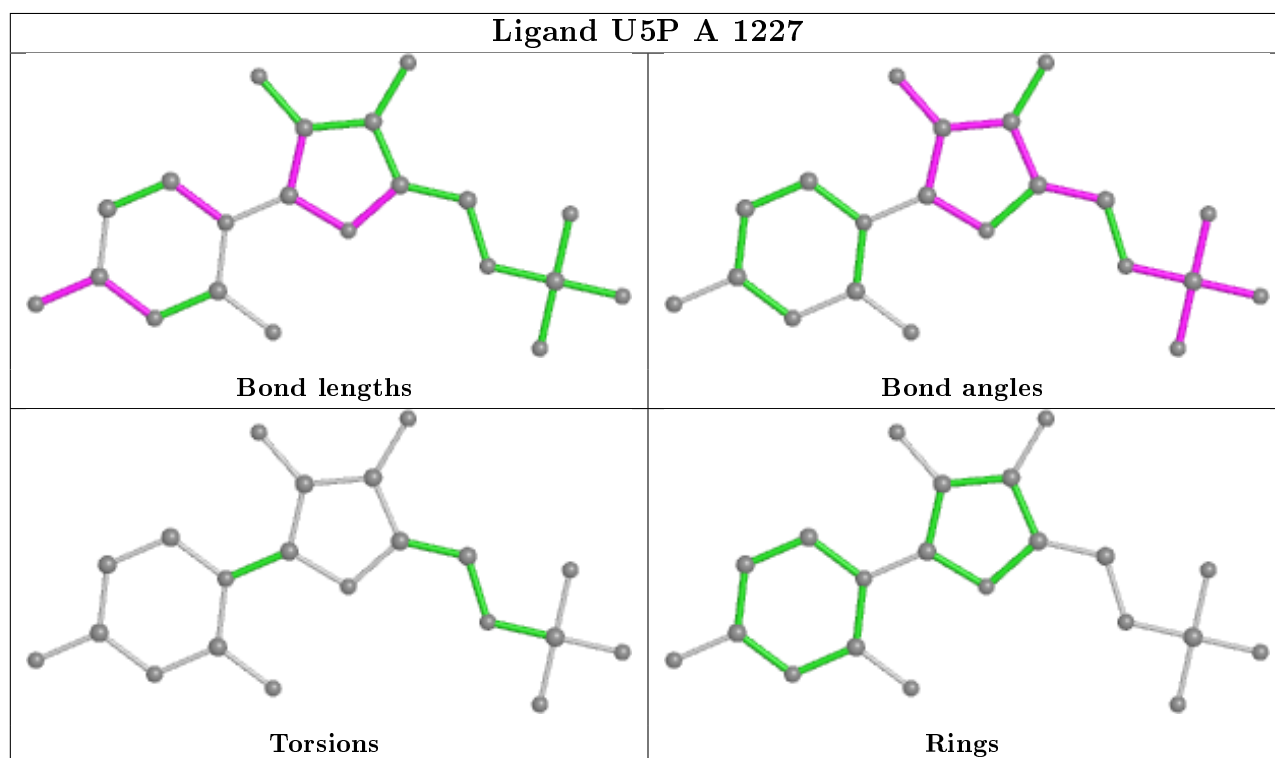
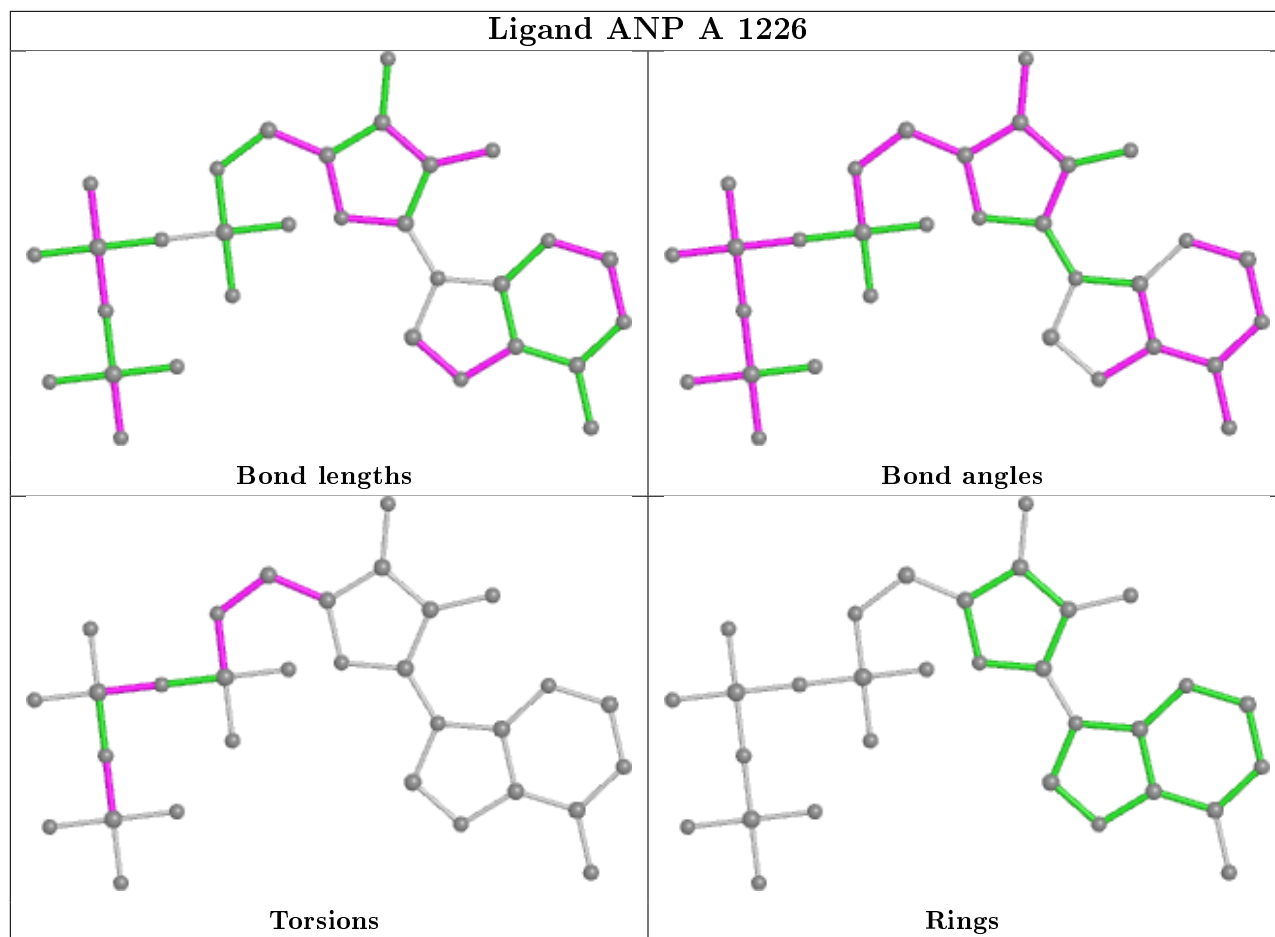
There are no ring outliers.

2 monomers are involved in 8 short contacts:

Mol	Chain	Res	Type	Clashes	Symm-Clashes
2	B	2000	ANP	4	0
2	A	1226	ANP	4	0

The following is a two-dimensional graphical depiction of Mogul quality analysis of bond lengths, bond angles, torsion angles, and ring geometry for all instances of the Ligand of Interest. In addition, ligands with molecular weight > 250 and outliers as shown on the validation Tables will also be included. For torsion angles, if less than 5% of the Mogul distribution of torsion angles is within 10 degrees of the torsion angle in question, then that torsion angle is considered an outlier. Any bond that is central to one or more torsion angles identified as an outlier by Mogul will be highlighted in the graph. For rings, the root-mean-square deviation (RMSD) between the ring in question and similar rings identified by Mogul is calculated over all ring torsion angles. If the average RMSD is greater than 60 degrees and the minimal RMSD between the ring in question and any Mogul-identified rings is also greater than 60 degrees, then that ring is considered an outlier. The outliers are highlighted in purple. The color gray indicates Mogul did not find sufficient equivalents in the CSD to analyse the geometry.





5.7 Other polymers [i](#)

There are no such residues in this entry.

5.8 Polymer linkage issues [i](#)

There are no chain breaks in this entry.

6 Fit of model and data

6.1 Protein, DNA and RNA chains

In the following table, the column labelled ‘#RSRZ> 2’ contains the number (and percentage) of RSRZ outliers, followed by percent RSRZ outliers for the chain as percentile scores relative to all X-ray entries and entries of similar resolution. The OWAB column contains the minimum, median, 95th percentile and maximum values of the occupancy-weighted average B-factor per residue. The column labelled ‘Q< 0.9’ lists the number of (and percentage) of residues with an average occupancy less than 0.9.

Mol	Chain	Analysed	<RSRZ>	#RSRZ>2	OWAB(Å ²)	Q<0.9
1	A	221/226 (97%)	0.04	7 (3%) 47 55	17, 32, 53, 75	1 (0%)
1	B	222/226 (98%)	0.40	26 (11%) 4 6	22, 41, 75, 95	1 (0%)
All	All	443/452 (98%)	0.22	33 (7%) 14 18	17, 36, 72, 95	2 (0%)

All (33) RSRZ outliers are listed below:

Mol	Chain	Res	Type	RSRZ
1	B	150	PRO	8.0
1	B	154	PRO	6.3
1	B	156	ALA	5.6
1	B	172	GLY	5.2
1	B	149	ASP	5.1
1	B	155	THR	4.9
1	B	142	VAL	4.4
1	B	146	TYR	4.3
1	B	153	ASP	4.1
1	B	148	ALA	3.9
1	B	225	PRO	3.7
1	B	205	GLU	3.3
1	B	161	LYS	3.0
1	B	159	ILE	2.9
1	A	172	GLY	2.8
1	A	97[A]	TRP	2.8
1	B	97[A]	TRP	2.7
1	B	220	GLY	2.7
1	B	140	THR	2.6
1	B	147	THR	2.6
1	B	141	ASN	2.6
1	B	171	VAL	2.5
1	B	181	SER	2.4
1	B	158	LYS	2.4

Continued on next page...

Continued from previous page...

Mol	Chain	Res	Type	RSRZ
1	B	180	SER	2.4
1	A	156	ALA	2.3
1	B	152	LYS	2.3
1	A	174	GLY	2.2
1	B	0	ALA	2.2
1	A	175	ILE	2.2
1	B	219	ASN	2.2
1	A	178	ALA	2.1
1	A	180	SER	2.1

6.2 Non-standard residues in protein, DNA, RNA chains [i](#)

There are no non-standard protein/DNA/RNA residues in this entry.

6.3 Carbohydrates [i](#)

There are no carbohydrates in this entry.

6.4 Ligands [i](#)

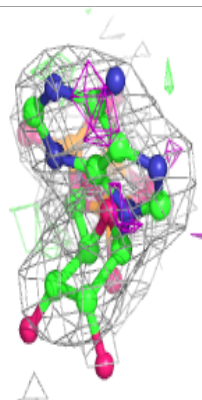
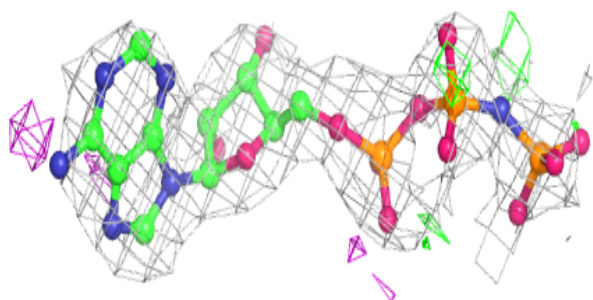
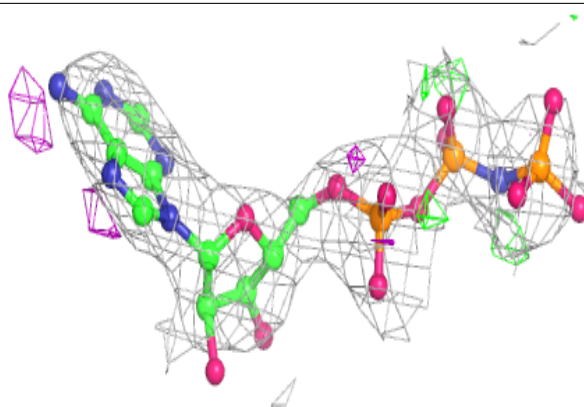
In the following table, the Atoms column lists the number of modelled atoms in the group and the number defined in the chemical component dictionary. The B-factors column lists the minimum, median, 95th percentile and maximum values of B factors of atoms in the group. The column labelled 'Q< 0.9' lists the number of atoms with occupancy less than 0.9.

Mol	Type	Chain	Res	Atoms	RSCC	RSR	B-factors(\AA^2)	Q<0.9
4	MG	A	1229	1/1	0.78	0.18	57,57,57,57	0
4	MG	B	2002	1/1	0.84	0.10	59,59,59,59	0
2	ANP	B	2000	31/31	0.85	0.27	63,71,74,75	9
4	MG	B	1229	1/1	0.89	0.13	66,66,66,66	0
4	MG	A	1228	1/1	0.90	0.16	43,43,43,43	0
2	ANP	A	1226	31/31	0.90	0.24	31,57,71,72	9
3	U5P	A	1227	21/21	0.98	0.12	17,25,29,31	0
3	U5P	B	2001	21/21	0.98	0.14	24,28,31,33	0

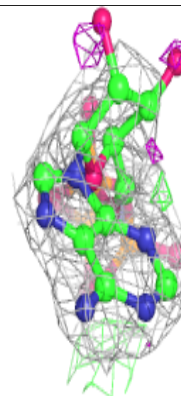
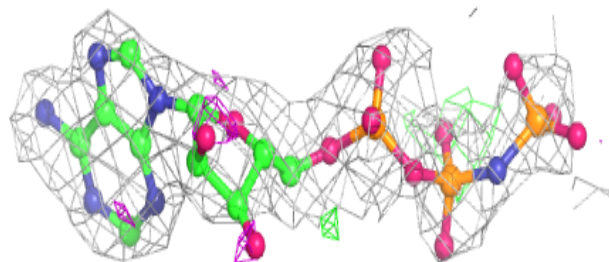
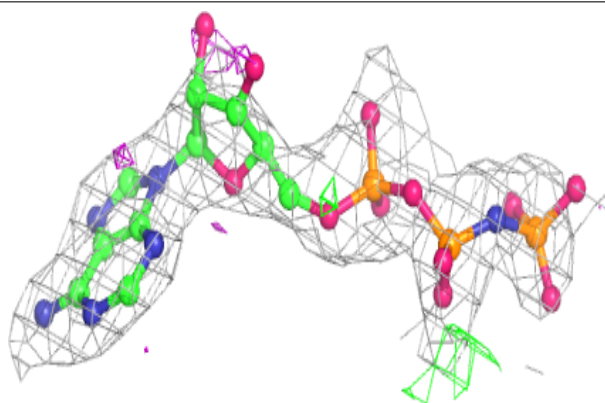
The following is a graphical depiction of the model fit to experimental electron density of all instances of the Ligand of Interest. In addition, ligands with molecular weight > 250 and outliers as shown on the geometry validation Tables will also be included. Each fit is shown from different orientation to approximate a three-dimensional view.

Electron density around ANP B 2000:

$2mF_o-DF_c$ (at 0.7 rmsd) in gray
 mF_o-DF_c (at 3 rmsd) in purple (negative)
and green (positive)

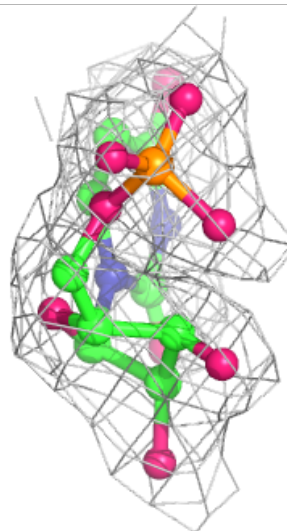
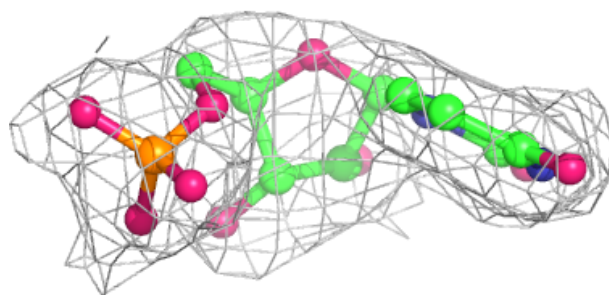
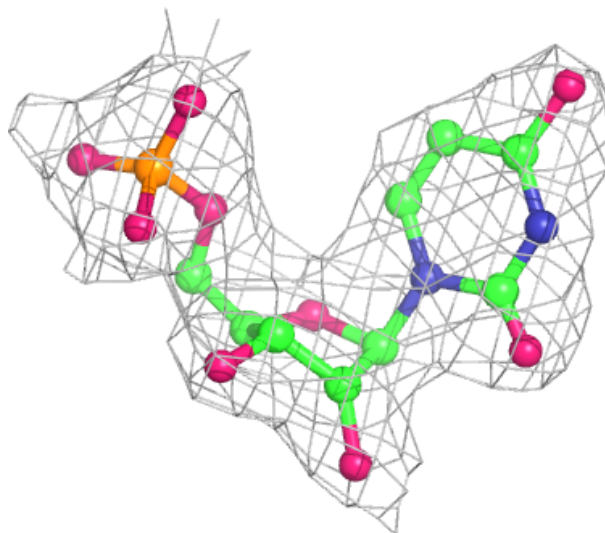
**Electron density around ANP A 1226:**

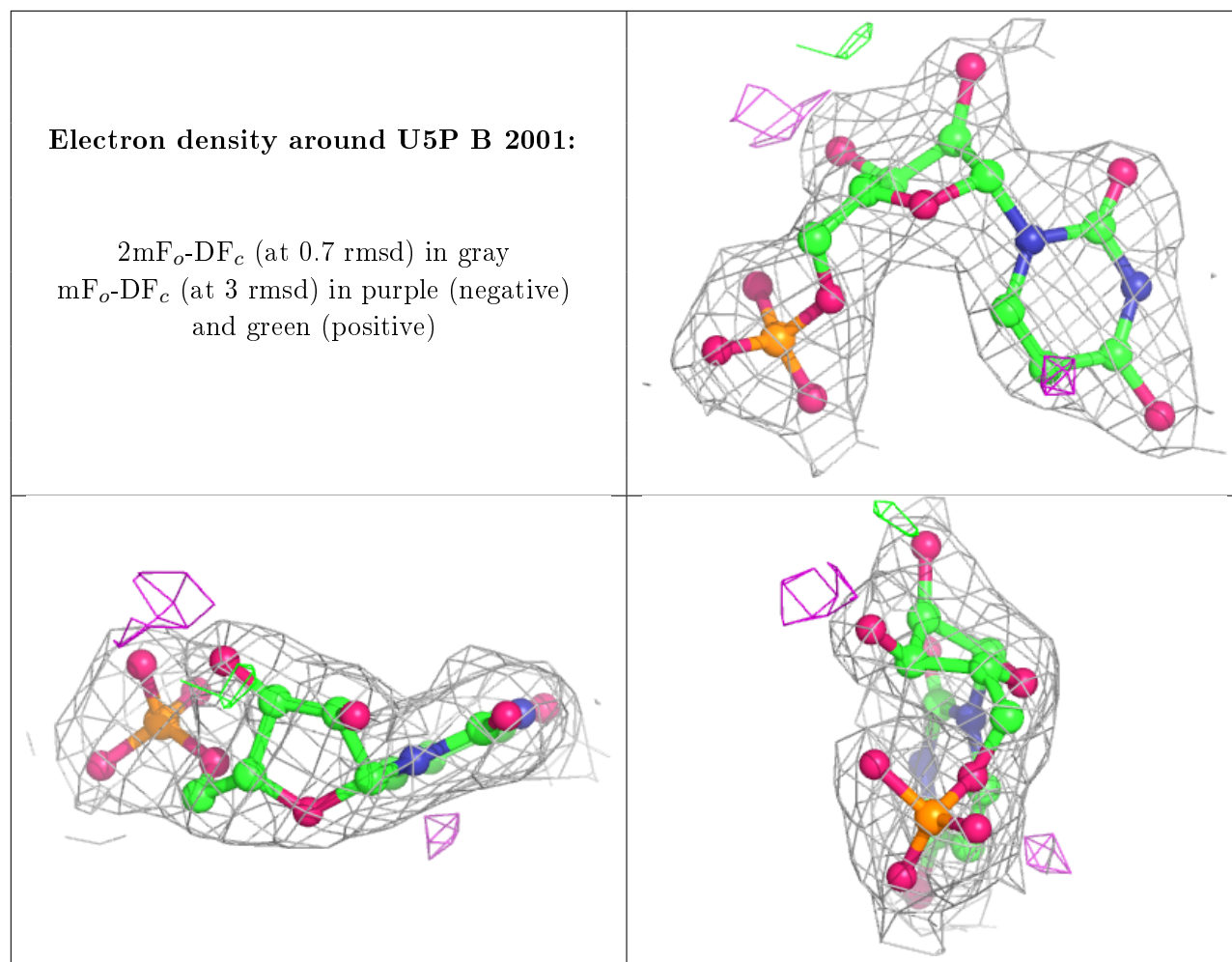
$2mF_o-DF_c$ (at 0.7 rmsd) in gray
 mF_o-DF_c (at 3 rmsd) in purple (negative)
and green (positive)



Electron density around U5P A 1227:

$2mF_o-DF_c$ (at 0.7 rmsd) in gray
 mF_o-DF_c (at 3 rmsd) in purple (negative)
and green (positive)





6.5 Other polymers [i](#)

There are no such residues in this entry.