



Full wwPDB EM Validation Report ⓘ

Dec 19, 2022 – 01:19 am GMT

PDB ID : 7BLN
EMDB ID : EMD-12220
Title : VPS35/VPS29 arch of metazoan membrane-assembled retromer:SNX3 complex modelled with human proteins
Authors : Leneva, N.; Kovtun, O.; Morado, D.R.; Briggs, J.A.G.; Owen, D.J.
Deposited on : 2021-01-18
Resolution : 8.90 Å (reported)
Based on initial models : 2R17, 5F0L

This is a Full wwPDB EM Validation Report for a publicly released PDB entry.

We welcome your comments at validation@mail.wwpdb.org

A user guide is available at

<https://www.wwpdb.org/validation/2017/EMValidationReportHelp>

with specific help available everywhere you see the ⓘ symbol.

The types of validation reports are described at

<http://www.wwpdb.org/validation/2017/FAQs#types>.

The following versions of software and data (see [references ⓘ](#)) were used in the production of this report:

EMDB validation analysis : 0.0.1.dev43
MolProbity : 4.02b-467
Percentile statistics : 20191225.v01 (using entries in the PDB archive December 25th 2019)
MapQ : 1.9.9
Ideal geometry (proteins) : Engh & Huber (2001)
Ideal geometry (DNA, RNA) : Parkinson et al. (1996)
Validation Pipeline (wwPDB-VP) : 2.31.3

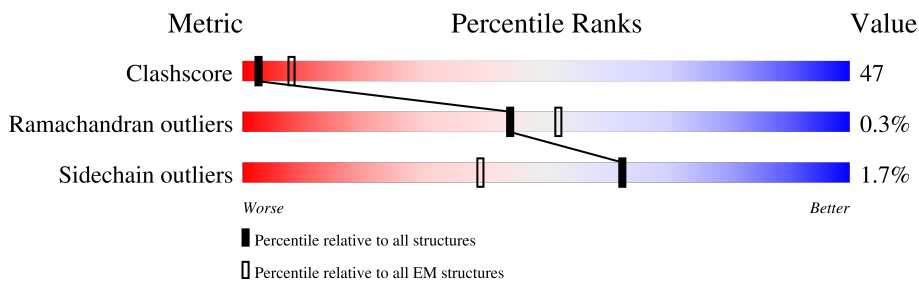
1 Overall quality at a glance i

The following experimental techniques were used to determine the structure:

ELECTRON MICROSCOPY

The reported resolution of this entry is 8.90 Å.

Percentile scores (ranging between 0-100) for global validation metrics of the entry are shown in the following graphic. The table shows the number of entries on which the scores are based.



Metric	Whole archive (#Entries)	EM structures (#Entries)
Clashscore	158937	4297
Ramachandran outliers	154571	4023
Sidechain outliers	154315	3826

The table below summarises the geometric issues observed across the polymeric chains and their fit to the map. The red, orange, yellow and green segments of the bar indicate the fraction of residues that contain outliers for ≥ 3 , 2, 1 and 0 types of geometric quality criteria respectively. A grey segment represents the fraction of residues that are not modelled. The numeric value for each fraction is indicated below the corresponding segment, with a dot representing fractions $\leq 5\%$. The upper red bar (where present) indicates the fraction of residues that have poor fit to the EM map (all-atom inclusion $< 40\%$). The numeric value is given above the bar.

Mol	Chain	Length	Quality of chain
1	B	182	60% 57% 38% 5%
1	D	182	58% 54% 42% .
2	A	796	32% 29% 65% . .
2	C	796	34% 30% 64% . .

2 Entry composition [i](#)

There are 2 unique types of molecules in this entry. The entry contains 15364 atoms, of which 0 are hydrogens and 0 are deuteriums.

In the tables below, the AltConf column contains the number of residues with at least one atom in alternate conformation and the Trace column contains the number of residues modelled with at most 2 atoms.

- Molecule 1 is a protein called Vacuolar protein sorting-associated protein 29.

Mol	Chain	Residues	Atoms					AltConf	Trace
			Total	C	N	O	S		
1	B	182	Total	C	N	O	S	0	0
			1447	936	242	263	6		
1	D	182	Total	C	N	O	S	0	0
			1447	936	242	263	6		

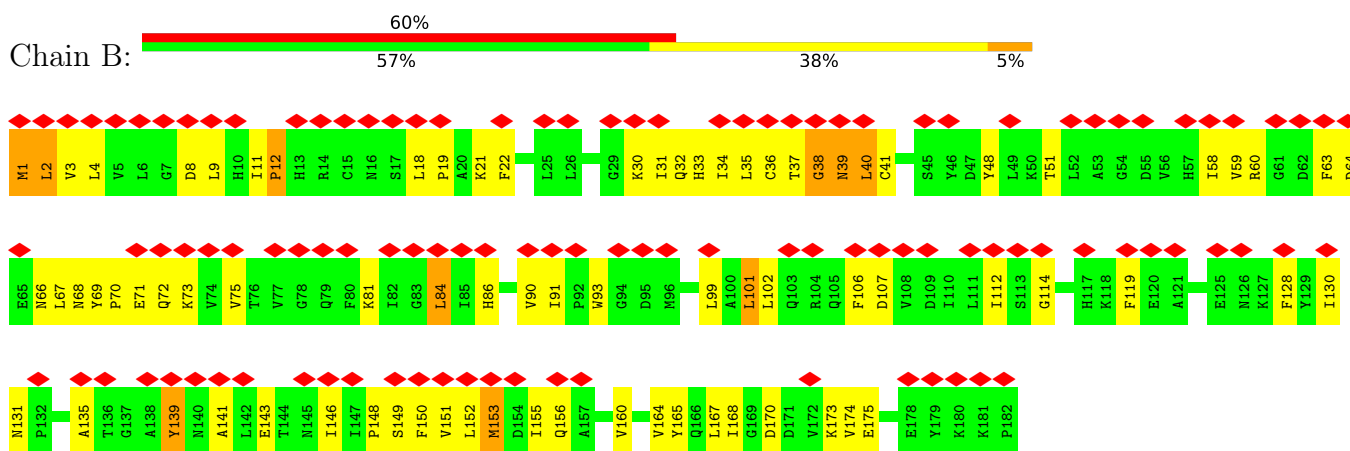
- Molecule 2 is a protein called Vacuolar protein sorting-associated protein 35.

Mol	Chain	Residues	Atoms					AltConf	Trace
			Total	C	N	O	S		
2	A	769	Total	C	N	O	S	0	0
			6235	3959	1069	1175	32		
2	C	769	Total	C	N	O	S	0	0
			6235	3959	1069	1175	32		

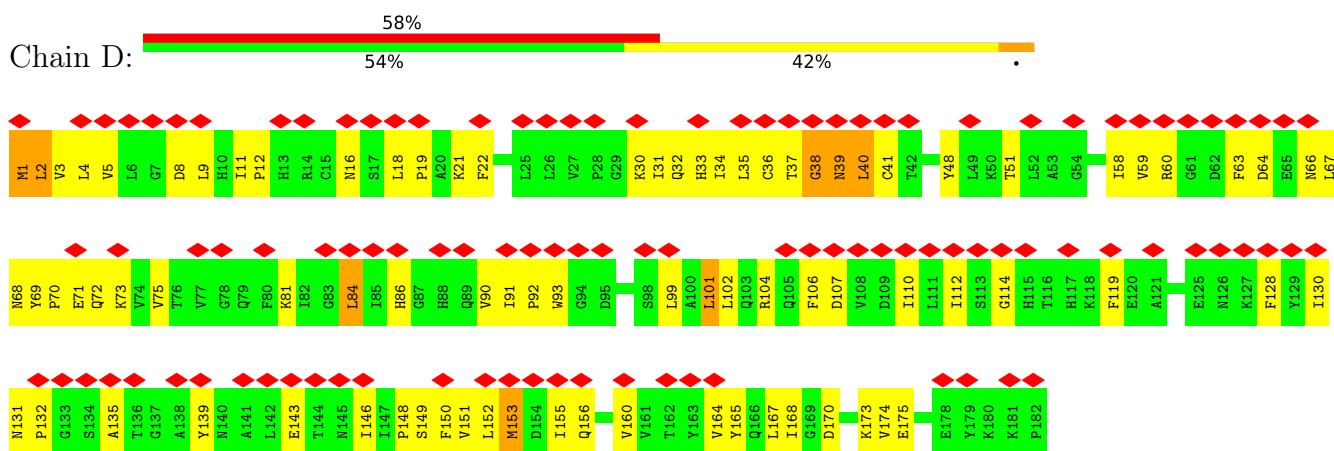
3 Residue-property plots

These plots are drawn for all protein, RNA, DNA and oligosaccharide chains in the entry. The first graphic for a chain summarises the proportions of the various outlier classes displayed in the second graphic. The second graphic shows the sequence view annotated by issues in geometry and atom inclusion in map density. Residues are color-coded according to the number of geometric quality criteria for which they contain at least one outlier: green = 0, yellow = 1, orange = 2 and red = 3 or more. A red diamond above a residue indicates a poor fit to the EM map for this residue (all-atom inclusion < 40%). Stretches of 2 or more consecutive residues without any outlier are shown as a green connector. Residues present in the sample, but not in the model, are shown in grey.

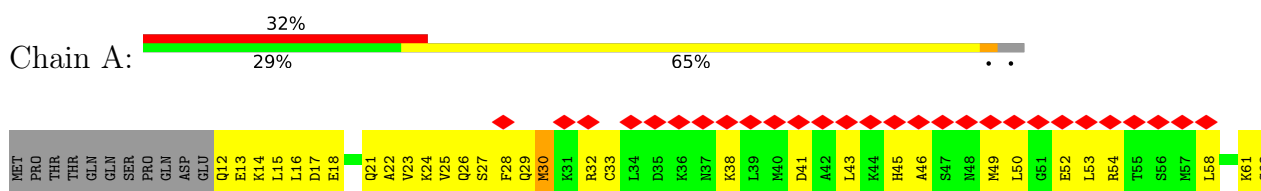
- Molecule 1: Vacuolar protein sorting-associated protein 29



- Molecule 1: Vacuolar protein sorting-associated protein 29



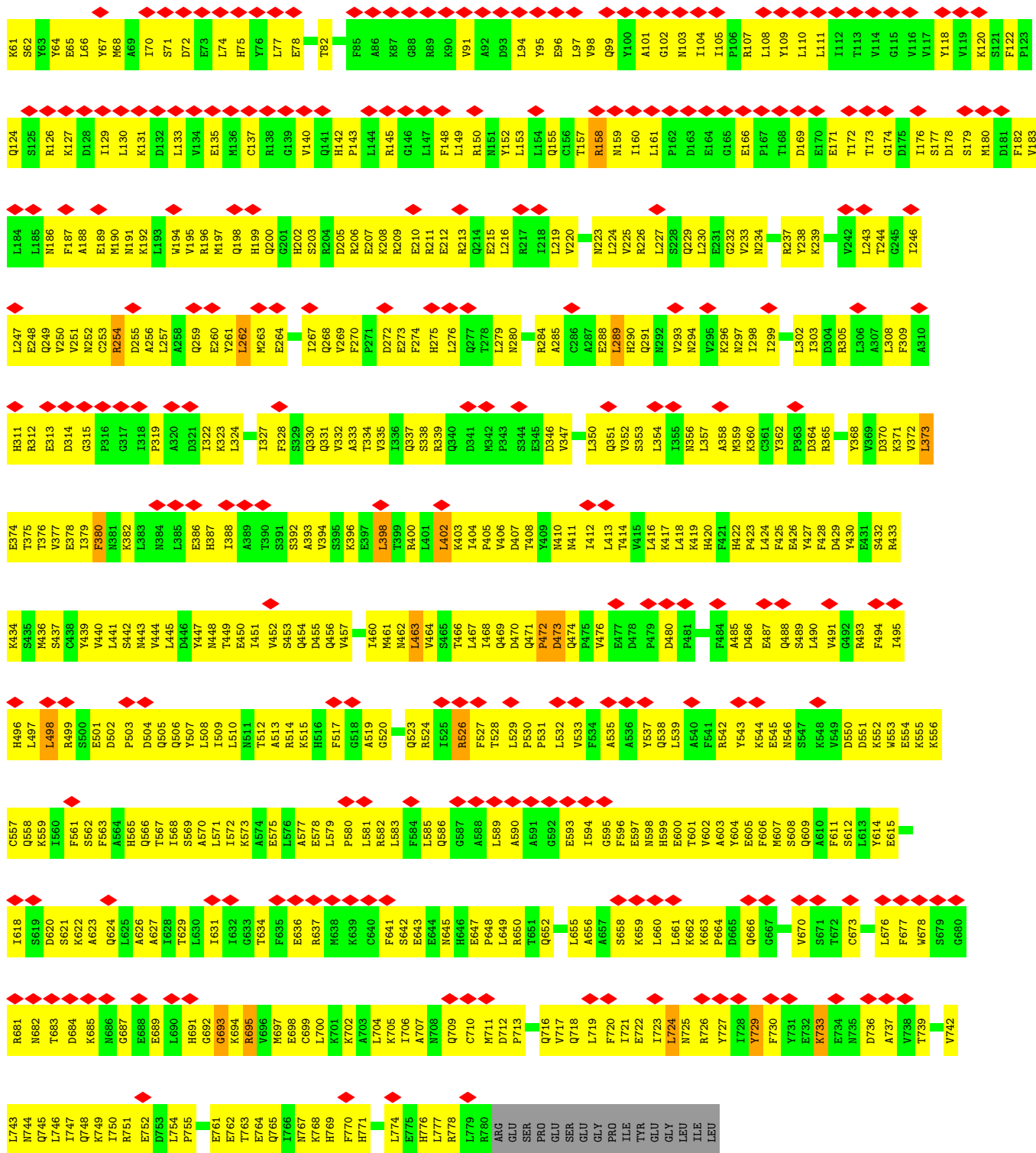
- Molecule 2: Vacuolar protein sorting-associated protein 35





● Molecule 2: Vacuolar protein sorting-associated protein 35





4 Experimental information

Property	Value	Source
EM reconstruction method	SUBTOMOGRAM AVERAGING	Depositor
Imposed symmetry	POINT, C1	Depositor
Number of subtomograms used	89313	Depositor
Resolution determination method	FSC 0.143 CUT-OFF	Depositor
CTF correction method	PHASE FLIPPING AND AMPLITUDE CORRECTION	Depositor
Microscope	FEI TITAN KRIOS	Depositor
Voltage (kV)	300	Depositor
Electron dose ($e^-/\text{\AA}^2$)	3	Depositor
Minimum defocus (nm)	Not provided	
Maximum defocus (nm)	Not provided	
Magnification	Not provided	
Image detector	GATAN K3 BIOQUANTUM (6k x 4k)	Depositor
Maximum map value	0.068	Depositor
Minimum map value	-0.047	Depositor
Average map value	0.000	Depositor
Map value standard deviation	0.003	Depositor
Recommended contour level	0.021	Depositor
Map size (Å)	285.768, 285.768, 285.768	wwPDB
Map dimensions	168, 168, 168	wwPDB
Map angles (°)	90.0, 90.0, 90.0	wwPDB
Pixel spacing (Å)	1.701, 1.701, 1.701	Depositor

5 Model quality i

5.1 Standard geometry i

The Z score for a bond length (or angle) is the number of standard deviations the observed value is removed from the expected value. A bond length (or angle) with $|Z| > 5$ is considered an outlier worth inspection. RMSZ is the root-mean-square of all Z scores of the bond lengths (or angles).

Mol	Chain	Bond lengths		Bond angles	
		RMSZ	# Z >5	RMSZ	# Z >5
1	B	0.46	2/1481 (0.1%)	0.68	0/2008
1	D	0.46	2/1481 (0.1%)	0.68	0/2008
2	A	0.53	0/6348	0.82	10/8578 (0.1%)
2	C	0.49	2/6348 (0.0%)	0.79	11/8578 (0.1%)
All	All	0.50	6/15658 (0.0%)	0.78	21/21172 (0.1%)

Chiral center outliers are detected by calculating the chiral volume of a chiral center and verifying if the center is modelled as a planar moiety or with the opposite hand. A planarity outlier is detected by checking planarity of atoms in a peptide group, atoms in a mainchain group or atoms of a sidechain that are expected to be planar.

Mol	Chain	#Chirality outliers	#Planarity outliers
2	A	0	5
2	C	0	1
All	All	0	6

All (6) bond length outliers are listed below:

Mol	Chain	Res	Type	Atoms	Z	Observed(Å)	Ideal(Å)
2	C	729	TYR	CD1-CE1	-6.78	1.29	1.39
1	B	1	MET	CG-SD	5.86	1.96	1.81
1	D	1	MET	CG-SD	5.85	1.96	1.81
1	D	153	MET	CG-SD	5.76	1.96	1.81
1	B	153	MET	CG-SD	5.75	1.96	1.81
2	C	380	PHE	CB-CG	-5.22	1.42	1.51

All (21) bond angle outliers are listed below:

Mol	Chain	Res	Type	Atoms	Z	Observed(°)	Ideal(°)
2	C	724	LEU	CB-CG-CD1	-10.12	93.80	111.00
2	A	30	MET	CA-CB-CG	8.15	127.15	113.30
2	C	398	LEU	CB-CG-CD2	-7.39	98.43	111.00
2	C	402	LEU	CA-CB-CG	-7.30	98.52	115.30

Continued on next page...

Continued from previous page...

Mol	Chain	Res	Type	Atoms	Z	Observed(°)	Ideal(°)
2	A	136	MET	CA-CB-CG	7.25	125.62	113.30
2	A	269	VAL	C-N-CA	-6.56	105.31	121.70
2	C	463	LEU	CA-CB-CG	-6.04	101.41	115.30
2	C	729	TYR	CB-CG-CD1	-5.95	117.43	121.00
2	C	373	LEU	CA-CB-CG	5.92	128.91	115.30
2	A	498	LEU	CA-CB-CG	5.85	128.76	115.30
2	C	262	LEU	CA-CB-CG	-5.82	101.91	115.30
2	C	424	LEU	CA-CB-CG	-5.80	101.96	115.30
2	C	269	VAL	C-N-CA	-5.79	107.22	121.70
2	A	111	LEU	CA-CB-CG	5.76	128.55	115.30
2	C	289	LEU	CA-CB-CG	-5.53	102.58	115.30
2	A	743	LEU	CB-CG-CD2	-5.46	101.72	111.00
2	A	416	LEU	CA-CB-CG	-5.33	103.04	115.30
2	A	289	LEU	CA-CB-CG	-5.20	103.35	115.30
2	C	498	LEU	CA-CB-CG	-5.17	103.41	115.30
2	A	357	LEU	CB-CG-CD1	5.08	119.63	111.00
2	A	582	ARG	NE-CZ-NH1	-5.04	117.78	120.30

There are no chirality outliers.

All (6) planarity outliers are listed below:

Mol	Chain	Res	Type	Group
2	A	469	GLN	Peptide
2	A	482	GLU	Peptide
2	A	483	ASP	Peptide
2	A	502	ASP	Peptide
2	A	605	GLU	Mainchain
2	C	472	PRO	Peptide

5.2 Too-close contacts [\(i\)](#)

In the following table, the Non-H and H(model) columns list the number of non-hydrogen atoms and hydrogen atoms in the chain respectively. The H(added) column lists the number of hydrogen atoms added and optimized by MolProbity. The Clashes column lists the number of clashes within the asymmetric unit, whereas Symm-Clashes lists symmetry-related clashes.

Mol	Chain	Non-H	H(model)	H(added)	Clashes	Symm-Clashes
1	B	1447	0	1459	90	0
1	D	1447	0	1459	89	0
2	A	6235	0	6251	675	0
2	C	6235	0	6251	622	0

Continued on next page...

Continued from previous page...

Mol	Chain	Non-H	H(model)	H(added)	Clashes	Symm-Clashes
All	All	15364	0	15420	1437	0

The all-atom clashscore is defined as the number of clashes found per 1000 atoms (including hydrogen atoms). The all-atom clashscore for this structure is 47.

All (1437) close contacts within the same asymmetric unit are listed below, sorted by their clash magnitude.

Atom-1	Atom-2	Interatomic distance (Å)	Clash overlap (Å)
1:D:92:PRO:HB3	2:C:637:ARG:NH2	1.58	1.15
2:A:647:GLU:HA	2:A:650:ARG:HE	1.17	1.10
1:B:8:ASP:H	1:B:38:GLY:HA3	1.15	1.10
1:D:8:ASP:H	1:D:38:GLY:HA3	1.15	1.09
2:C:471:GLN:HB2	2:C:476:VAL:H	1.28	0.96
2:A:633:GLY:O	2:A:637:ARG:NH1	1.99	0.96
2:C:673:CYS:HA	2:C:676:LEU:HD13	1.48	0.95
2:C:196:ARG:O	2:C:196:ARG:NH1	2.01	0.94
2:A:445:LEU:HB3	2:A:493:ARG:HH11	1.33	0.92
2:C:398:LEU:HD23	2:C:428:PHE:HE1	1.34	0.91
2:A:150:ARG:NH2	2:A:189:GLU:OE1	2.04	0.90
2:A:501:GLU:O	2:A:506:GLN:NE2	2.05	0.89
2:A:296:LYS:NZ	2:A:346:ASP:O	2.07	0.88
2:C:663:LYS:NZ	2:C:706:ILE:O	2.09	0.86
2:C:430:TYR:OH	2:C:434:LYS:NZ	2.08	0.85
1:D:40:LEU:H	1:D:40:LEU:CD2	1.89	0.85
2:A:491:VAL:HA	2:A:494:PHE:HD2	1.40	0.85
2:A:665:ASP:OD1	2:A:668:ARG:NH1	2.09	0.85
2:A:296:LYS:HD2	2:A:346:ASP:HB3	1.57	0.85
2:C:454:GLN:HE22	2:C:509:ILE:HG12	1.39	0.85
1:B:141:ALA:HB1	2:A:589:LEU:HD22	1.56	0.85
2:C:677:PHE:O	2:C:695:ARG:NH2	2.08	0.85
1:B:40:LEU:H	1:B:40:LEU:CD2	1.89	0.84
2:C:105:ILE:HG23	2:C:109:TYR:HE2	1.42	0.84
2:A:23:VAL:HG21	2:A:66:LEU:HD11	1.60	0.84
2:A:50:LEU:O	2:A:54:ARG:NH1	2.11	0.84
1:D:38:GLY:HA2	1:D:86:HIS:CD2	2.14	0.83
2:C:529:LEU:HD13	2:C:532:LEU:HD12	1.60	0.83
2:A:17:ASP:O	2:A:21:GLN:NE2	2.12	0.83
2:C:124:GLN:HA	2:C:172:THR:HA	1.58	0.83
2:C:303:ILE:HG21	2:C:353:SER:HB2	1.61	0.83
1:B:3:VAL:HG22	1:B:33:HIS:HB2	1.61	0.82
1:B:38:GLY:HA2	1:B:86:HIS:CD2	2.14	0.82

Continued on next page...

Continued from previous page...

Atom-1	Atom-2	Interatomic distance (Å)	Clash overlap (Å)
2:C:150:ARG:NE	2:C:189:GLU:OE1	2.12	0.82
2:C:767:ASN:O	2:C:771:HIS:ND1	2.10	0.82
1:B:139:TYR:OH	2:A:586:GLN:NE2	2.12	0.82
2:C:250:VAL:O	2:C:259:GLN:NE2	2.13	0.82
2:C:636:GLU:HG3	2:C:637:ARG:HD2	1.59	0.82
2:C:523:GLN:O	2:C:526:ARG:NH1	2.13	0.81
2:A:578:GLU:N	2:A:578:GLU:OE1	2.13	0.81
2:A:108:LEU:HA	2:A:111:LEU:HG	1.62	0.81
2:C:333:ALA:O	2:C:337:GLN:NE2	2.13	0.81
2:A:72:ASP:HA	2:A:75:HIS:CD2	2.16	0.81
2:C:491:VAL:HA	2:C:494:PHE:CD2	2.16	0.80
2:A:541:PHE:HA	2:A:544:LYS:HZ3	1.46	0.80
1:D:3:VAL:HG22	1:D:33:HIS:HB2	1.61	0.80
2:A:534:PHE:HA	2:A:537:TYR:CD2	2.15	0.80
1:D:151:VAL:HG22	1:D:164:VAL:HA	1.64	0.80
2:A:529:LEU:HD12	2:A:571:LEU:HD21	1.62	0.80
2:A:685:LYS:HB3	2:A:688:GLU:HB3	1.63	0.80
1:B:151:VAL:HG22	1:B:164:VAL:HA	1.64	0.80
1:D:92:PRO:HB3	2:C:637:ARG:HH22	1.44	0.80
2:A:569:SER:HA	2:A:572:ILE:HD12	1.63	0.80
2:C:724:LEU:HD11	2:C:746:LEU:HD11	1.63	0.79
2:A:456:GLN:HE21	2:A:460:ILE:HG13	1.45	0.79
2:C:105:ILE:HG23	2:C:109:TYR:CE2	2.18	0.78
2:A:682:ASN:HD21	2:A:685:LYS:HG3	1.49	0.78
2:C:41:ASP:HA	2:C:44:LYS:HE3	1.65	0.78
2:A:523:GLN:O	2:A:526:ARG:NH1	2.18	0.77
2:A:688:GLU:OE2	2:A:691:HIS:NE2	2.17	0.77
2:C:183:VAL:HA	2:C:186:ASN:HD21	1.47	0.77
2:A:578:GLU:HB2	2:A:582:ARG:HH12	1.47	0.77
2:A:390:THR:O	2:A:396:LYS:NZ	2.12	0.77
2:A:557:CYS:O	2:A:561:PHE:HD1	1.68	0.77
2:C:284:ARG:HG3	2:C:331:GLN:HE22	1.49	0.77
2:C:370:ASP:HA	2:C:373:LEU:HD12	1.67	0.77
2:A:155:GLN:NE2	2:A:156:CYS:SG	2.59	0.76
2:C:29:GLN:HA	2:C:32:ARG:HE	1.48	0.76
1:B:141:ALA:HB1	2:A:589:LEU:CD2	2.14	0.76
2:A:647:GLU:HA	2:A:650:ARG:NE	1.98	0.76
2:A:744:ASN:O	2:A:748:GLN:NE2	2.17	0.76
2:C:451:ILE:HD11	2:C:501:GLU:HG2	1.66	0.76
2:C:312:ARG:HH22	2:C:315:GLY:HA3	1.51	0.76
2:C:188:ALA:HA	2:C:191:ASN:HD21	1.51	0.75

Continued on next page...

Continued from previous page...

Atom-1	Atom-2	Interatomic distance (Å)	Clash overlap (Å)
1:D:63:PHE:CZ	2:C:582:ARG:HD3	2.21	0.75
2:A:368:TYR:HA	2:A:371:LYS:HE2	1.67	0.75
2:A:324:LEU:HB3	2:A:328:PHE:HE2	1.51	0.75
2:C:445:LEU:HD11	2:C:490:LEU:HD23	1.67	0.75
2:C:763:THR:O	2:C:767:ASN:ND2	2.17	0.75
2:A:238:TYR:HA	2:A:242:VAL:HB	1.67	0.74
2:A:725:ASN:HB2	2:A:726:ARG:HH12	1.49	0.74
2:C:188:ALA:HA	2:C:191:ASN:ND2	2.02	0.74
2:A:324:LEU:HB3	2:A:328:PHE:CE2	2.22	0.74
2:C:441:LEU:HD21	2:C:494:PHE:HZ	1.51	0.74
2:C:223:ASN:OD1	2:C:224:LEU:N	2.21	0.74
2:A:12:GLN:HE21	2:A:15:LEU:HB2	1.52	0.74
2:C:190:MET:HE1	2:C:220:VAL:HA	1.70	0.74
1:B:139:TYR:OH	2:A:586:GLN:CD	2.26	0.74
2:A:445:LEU:HB3	2:A:493:ARG:NH1	2.03	0.74
2:C:692:GLY:H	2:C:695:ARG:NH1	1.86	0.74
2:A:263:MET:HA	2:A:266:ILE:HD12	1.70	0.73
2:A:775:GLU:HB2	2:A:780:ARG:HH11	1.54	0.73
2:A:164:GLU:HG3	2:A:232:GLY:HA2	1.69	0.73
2:A:308:LEU:O	2:A:312:ARG:HB2	1.89	0.73
1:D:40:LEU:H	1:D:40:LEU:HD23	1.54	0.73
2:A:531:PRO:HA	2:A:534:PHE:HD2	1.54	0.73
2:A:267:ILE:HD13	2:A:301:ALA:HB3	1.69	0.73
2:C:471:GLN:HB3	2:C:472:PRO:HD2	1.71	0.73
2:C:244:THR:O	2:C:248:GLU:HG3	1.89	0.73
2:A:182:PHE:O	2:A:186:ASN:ND2	2.20	0.72
2:A:352:VAL:HG13	2:A:404:ILE:HD11	1.71	0.72
2:C:291:GLN:NE2	2:C:338:SER:O	2.13	0.72
2:A:266:ILE:HG23	2:A:270:PHE:CE2	2.23	0.72
2:C:570:ALA:HA	2:C:573:LYS:NZ	2.05	0.72
2:C:725:ASN:HB3	2:C:729:TYR:OH	1.88	0.72
2:A:543:TYR:CE2	2:A:556:LYS:HB3	2.25	0.72
2:C:95:TYR:HE1	2:C:111:LEU:HB2	1.54	0.72
2:C:724:LEU:HA	2:C:727:TYR:HD2	1.54	0.72
2:C:733:LYS:HD2	2:C:733:LYS:O	1.89	0.72
1:B:40:LEU:H	1:B:40:LEU:HD23	1.54	0.72
2:C:354:LEU:HD23	2:C:357:LEU:HD21	1.71	0.72
1:D:92:PRO:HB3	2:C:637:ARG:HH21	1.50	0.72
2:C:312:ARG:NH1	2:C:313:GLU:O	2.23	0.72
2:C:718:GLN:NE2	2:C:722:GLU:OE2	2.23	0.71
2:A:429:ASP:O	2:A:433:ARG:N	2.18	0.71

Continued on next page...

Continued from previous page...

Atom-1	Atom-2	Interatomic distance (Å)	Clash overlap (Å)
2:A:29:GLN:HA	2:A:32:ARG:HG3	1.70	0.71
2:A:207:GLU:OE1	2:A:211:ARG:NH1	2.20	0.71
2:A:17:ASP:OD1	2:A:18:GLU:N	2.23	0.71
2:C:605:GLU:OE2	2:C:609:GLN:NE2	2.24	0.71
2:C:50:LEU:O	2:C:54:ARG:NH1	2.23	0.71
1:D:107:ASP:OD1	2:C:768:LYS:HE3	1.91	0.71
2:A:272:ASP:N	2:A:305:ARG:HH12	1.89	0.71
2:A:741:GLN:OE1	2:A:745:GLN:NE2	2.22	0.71
2:C:23:VAL:HG21	2:C:66:LEU:HD11	1.72	0.71
2:C:198:GLN:HE21	2:C:213:ARG:HH12	1.38	0.71
2:C:202:HIS:O	2:C:209:ARG:NH2	2.21	0.70
2:A:608:SER:HA	2:A:611:PHE:HD2	1.57	0.70
2:C:224:LEU:HA	2:C:227:LEU:HD12	1.72	0.70
2:C:685:LYS:NZ	2:C:689:GLU:O	2.23	0.70
1:D:18:LEU:HD12	1:D:18:LEU:H	1.56	0.70
2:C:96:GLU:O	2:C:99:GLN:HG2	1.89	0.70
2:A:646:HIS:O	2:A:650:ARG:HG3	1.90	0.70
1:D:16:ASN:HB2	2:C:493:ARG:NH2	2.07	0.70
2:A:485:ALA:O	2:A:488:GLN:NE2	2.24	0.70
2:A:535:ALA:O	2:A:538:GLN:HG3	1.91	0.70
2:C:681:ARG:NE	2:C:687:GLY:O	2.25	0.70
2:A:681:ARG:HG2	2:A:689:GLU:HA	1.74	0.70
2:C:29:GLN:HB2	2:C:32:ARG:HH21	1.55	0.70
2:C:137:CYS:SG	2:C:150:ARG:NH2	2.64	0.69
2:C:681:ARG:HB2	2:C:687:GLY:O	1.93	0.69
2:A:550:ASP:OD1	2:A:553:TRP:N	2.24	0.69
2:A:496:HIS:HA	2:A:499:ARG:NH1	2.07	0.69
2:C:205:ASP:HB2	2:C:209:ARG:NH1	2.07	0.69
2:A:194:TRP:CZ3	2:A:258:ALA:HB2	2.27	0.69
2:A:267:ILE:HG21	2:A:301:ALA:HB1	1.75	0.69
2:A:483:ASP:HB2	2:A:486:ASP:HB3	1.74	0.69
2:C:751:ARG:HH21	2:C:754:LEU:HD22	1.56	0.69
2:A:403:LYS:HZ3	2:A:406:VAL:HG11	1.58	0.69
1:B:18:LEU:HD12	1:B:18:LEU:H	1.56	0.69
2:A:67:TYR:CE2	2:A:148:PHE:HB3	2.28	0.69
2:C:662:LYS:HG2	2:C:664:PRO:HD2	1.73	0.69
2:A:58:LEU:HB2	2:A:63:TYR:CE2	2.28	0.69
2:A:233:VAL:HA	2:A:237:ARG:HH12	1.58	0.69
2:A:236:GLU:HA	2:A:239:LYS:HG2	1.75	0.69
2:C:368:TYR:HA	2:C:371:LYS:HE2	1.75	0.69
2:A:12:GLN:HG2	2:A:13:GLU:N	2.07	0.69

Continued on next page...

Continued from previous page...

Atom-1	Atom-2	Interatomic distance (Å)	Clash overlap (Å)
2:C:724:LEU:HD11	2:C:746:LEU:CD1	2.22	0.68
2:A:206:ARG:NH2	2:A:209:ARG:HE	1.91	0.68
2:C:373:LEU:HB3	2:C:420:HIS:HD2	1.56	0.68
2:A:710:CYS:HB2	2:A:716:GLN:HG3	1.74	0.68
2:C:499:ARG:HD3	2:C:535:ALA:HA	1.75	0.68
2:A:481:PRO:HD2	2:A:484:PHE:CE1	2.29	0.68
2:C:373:LEU:HD13	2:C:420:HIS:HB3	1.75	0.68
2:A:319:PRO:HD2	2:A:322:ILE:HD11	1.75	0.68
2:C:26:GLN:NE2	2:C:52:GLU:OE2	2.20	0.68
1:D:39:ASN:HD22	1:D:63:PHE:H	1.41	0.68
2:A:556:LYS:HA	2:A:559:LYS:HE3	1.76	0.68
2:C:689:GLU:HB2	2:C:691:HIS:CE1	2.28	0.68
1:B:9:LEU:CD2	1:B:135:ALA:HB3	2.24	0.68
2:A:226:ARG:HD2	2:A:229:GLN:NE2	2.08	0.68
2:A:455:ASP:OD1	2:A:456:GLN:N	2.27	0.68
2:C:183:VAL:HA	2:C:186:ASN:ND2	2.08	0.68
2:C:243:LEU:HA	2:C:246:ILE:HG12	1.74	0.68
1:D:9:LEU:CD2	1:D:135:ALA:HB3	2.24	0.67
2:C:71:SER:O	2:C:75:HIS:ND1	2.26	0.67
2:A:461:MET:HB3	2:A:516:HIS:CD2	2.30	0.67
2:A:552:LYS:HA	2:A:555:LYS:HE2	1.77	0.67
2:A:689:GLU:HB2	2:A:691:HIS:CE1	2.30	0.67
1:D:8:ASP:N	1:D:38:GLY:HA3	2.00	0.67
2:C:176:ILE:HG12	2:C:232:GLY:HA3	1.77	0.67
2:C:718:GLN:O	2:C:721:ILE:HG22	1.93	0.67
1:B:39:ASN:HD22	1:B:63:PHE:H	1.41	0.67
1:D:112:ILE:HD13	1:D:130:ILE:HB	1.76	0.67
2:A:375:THR:HA	2:A:378:GLU:OE1	1.95	0.67
2:C:702:LYS:HA	2:C:705:LYS:HE3	1.74	0.67
2:A:495:ILE:O	2:A:498:LEU:HG	1.94	0.67
2:A:745:GLN:O	2:A:749:LYS:HG3	1.95	0.67
2:C:362:TYR:HB3	2:C:365:ARG:HG2	1.76	0.67
2:C:569:SER:HA	2:C:572:ILE:HD12	1.77	0.67
1:B:112:ILE:HD13	1:B:130:ILE:HB	1.76	0.67
2:A:647:GLU:OE1	2:A:695:ARG:NH1	2.28	0.67
2:A:722:GLU:O	2:A:726:ARG:NH1	2.27	0.67
2:A:702:LYS:O	2:A:705:LYS:HG3	1.95	0.67
1:B:38:GLY:HA2	1:B:86:HIS:HD2	1.58	0.67
1:D:38:GLY:HA2	1:D:86:HIS:HD2	1.57	0.67
2:A:246:ILE:HD13	2:A:249:GLN:HE22	1.58	0.67
2:A:296:LYS:NZ	2:A:350:LEU:HG	2.10	0.67

Continued on next page...

Continued from previous page...

Atom-1	Atom-2	Interatomic distance (Å)	Clash overlap (Å)
2:C:99:GLN:HA	2:C:107:ARG:HG2	1.77	0.67
2:C:582:ARG:O	2:C:586:GLN:HG2	1.95	0.67
2:A:505:GLN:O	2:A:509:ILE:HG13	1.96	0.66
2:C:118:TYR:O	2:C:122:PHE:N	2.25	0.66
2:C:495:ILE:HG22	2:C:499:ARG:HH22	1.60	0.66
2:A:224:LEU:HD23	2:A:265:CYS:SG	2.35	0.66
2:A:233:VAL:HA	2:A:237:ARG:NH1	2.11	0.66
2:A:725:ASN:HB2	2:A:726:ARG:NH1	2.10	0.66
1:B:93:TRP:CZ3	2:A:637:ARG:NH2	2.63	0.66
2:A:13:GLU:HA	2:A:16:LEU:HD12	1.76	0.66
2:A:303:ILE:HG23	2:A:357:LEU:HD21	1.77	0.66
2:A:577:ALA:HA	2:A:613:LEU:HD21	1.77	0.66
2:A:93:ASP:HB3	2:A:96:GLU:OE2	1.96	0.66
2:A:333:ALA:O	2:A:337:GLN:HG2	1.95	0.66
2:A:487:GLU:HA	2:A:490:LEU:HD13	1.76	0.66
2:C:205:ASP:HB3	2:C:208:LYS:HE3	1.77	0.66
1:B:63:PHE:HZ	2:A:582:ARG:HB3	1.60	0.66
2:C:238:TYR:CE2	2:C:274:PHE:HB3	2.30	0.66
2:C:264:GLU:HA	2:C:267:ILE:HD12	1.78	0.66
2:A:116:VAL:O	2:A:120:LYS:NZ	2.27	0.66
2:A:483:ASP:O	2:A:485:ALA:N	2.29	0.66
2:A:660:LEU:O	2:A:666:GLN:NE2	2.29	0.66
2:A:730:PHE:HB3	2:A:735:ASN:HD22	1.61	0.66
2:C:387:HIS:HB3	2:C:429:ASP:HA	1.76	0.66
2:A:158:ARG:HA	2:A:226:ARG:NE	2.11	0.66
2:C:101:ALA:O	2:C:107:ARG:NH1	2.29	0.66
2:A:46:ALA:HA	2:A:49:MET:CE	2.26	0.65
2:A:138:ARG:NH1	2:A:189:GLU:OE2	2.20	0.65
2:A:503:PRO:HG3	2:A:542:ARG:HG2	1.79	0.65
2:C:296:LYS:HG3	2:C:350:LEU:HD21	1.76	0.65
2:C:685:LYS:HG2	2:C:685:LYS:O	1.95	0.65
2:A:627:ALA:O	2:A:631:ILE:HG13	1.96	0.65
2:C:145:ARG:O	2:C:149:LEU:HD23	1.97	0.65
2:A:270:PHE:HB2	2:A:275:HIS:NE2	2.10	0.65
2:C:660:LEU:HD21	2:C:666:GLN:HA	1.77	0.65
2:A:46:ALA:HA	2:A:49:MET:HE1	1.79	0.65
2:C:745:GLN:O	2:C:749:LYS:HG3	1.97	0.65
2:A:609:GLN:O	2:A:612:SER:OG	2.12	0.65
2:C:723:ILE:HG12	2:C:727:TYR:CE2	2.32	0.65
1:B:141:ALA:HB2	2:A:586:GLN:HE22	1.61	0.65
2:A:648:PRO:HB2	2:A:649:LEU:HD12	1.79	0.65

Continued on next page...

Continued from previous page...

Atom-1	Atom-2	Interatomic distance (Å)	Clash overlap (Å)
2:C:523:GLN:HG3	2:C:524:ARG:HG3	1.79	0.65
2:C:726:ARG:HA	2:C:729:TYR:CD2	2.32	0.65
2:A:296:LYS:HZ2	2:A:350:LEU:HG	1.61	0.64
2:C:705:LYS:O	2:C:709:GLN:HG2	1.97	0.64
2:A:513:ALA:HB1	2:A:517:PHE:HE2	1.62	0.64
2:A:538:GLN:HA	2:A:541:PHE:CD2	2.32	0.64
2:A:727:TYR:CB	2:A:743:LEU:HD21	2.27	0.64
2:A:750:ILE:HG22	2:A:751:ARG:HH22	1.62	0.64
2:C:297:ASN:OD1	2:C:298:ILE:N	2.29	0.64
2:C:533:VAL:HG11	2:C:583:LEU:HD22	1.79	0.64
2:C:494:PHE:O	2:C:498:LEU:HG	1.97	0.64
2:C:596:PHE:O	2:C:599:HIS:ND1	2.30	0.64
1:D:104:ARG:HB3	2:C:769:HIS:ND1	2.12	0.64
1:B:8:ASP:N	1:B:38:GLY:HA3	2.00	0.64
1:D:4:LEU:HB3	1:D:34:ILE:HG12	1.79	0.64
2:A:342:MET:SD	2:A:346:ASP:HB2	2.37	0.64
2:A:393:ALA:HA	2:A:396:LYS:HG2	1.80	0.64
2:C:224:LEU:HD11	2:C:270:PHE:CZ	2.32	0.64
2:A:183:VAL:HG11	2:A:227:LEU:HD21	1.78	0.64
2:A:474:GLN:HE22	2:A:477:GLU:H	1.45	0.64
2:C:206:ARG:HD3	2:C:209:ARG:HE	1.61	0.64
2:C:474:GLN:HG2	2:C:476:VAL:HG13	1.78	0.64
2:C:626:ALA:O	2:C:629:THR:HG22	1.98	0.64
1:B:4:LEU:HB3	1:B:34:ILE:HG12	1.79	0.64
2:A:403:LYS:HD2	2:A:439:TYR:HE2	1.62	0.64
1:B:164:VAL:CG1	1:B:175:GLU:HB3	2.28	0.63
2:C:98:VAL:HB	2:C:110:LEU:HD13	1.79	0.63
2:C:505:GLN:O	2:C:509:ILE:HG13	1.99	0.63
2:A:327:ILE:O	2:A:330:GLN:HG3	1.99	0.63
2:A:650:ARG:HB2	2:A:650:ARG:CZ	2.28	0.63
2:A:224:LEU:HD12	2:A:227:LEU:HB2	1.81	0.63
2:C:469:GLN:NE2	2:C:519:ALA:O	2.31	0.63
2:A:545:GLU:OE1	2:A:546:ASN:ND2	2.32	0.63
2:C:620:ASP:OD1	2:C:622:LYS:NZ	2.31	0.63
2:A:489:SER:OG	2:A:493:ARG:NH1	2.31	0.63
1:B:19:PRO:HG2	1:B:22:PHE:HB2	1.81	0.63
1:D:164:VAL:CG1	1:D:175:GLU:HB3	2.28	0.63
2:C:249:GLN:NE2	2:C:250:VAL:HG23	2.14	0.63
2:C:347:VAL:O	2:C:351:GLN:HG2	1.99	0.63
2:C:692:GLY:N	2:C:695:ARG:NH1	2.47	0.63
2:A:645:ASN:O	2:A:649:LEU:HD13	1.98	0.63

Continued on next page...

Continued from previous page...

Atom-1	Atom-2	Interatomic distance (Å)	Clash overlap (Å)
2:C:535:ALA:O	2:C:538:GLN:NE2	2.31	0.63
2:A:295:VAL:HA	2:A:298:ILE:HD12	1.81	0.63
2:A:775:GLU:HB2	2:A:780:ARG:NH1	2.12	0.63
2:C:359:MET:HE3	2:C:405:PRO:HA	1.81	0.63
2:A:541:PHE:HA	2:A:544:LYS:NZ	2.13	0.62
2:A:665:ASP:O	2:A:668:ARG:HG2	1.99	0.62
2:C:323:LYS:NZ	2:C:365:ARG:HH12	1.97	0.62
2:C:394:VAL:O	2:C:398:LEU:HD13	1.99	0.62
2:C:487:GLU:HA	2:C:490:LEU:HD12	1.79	0.62
2:A:766:ILE:HA	2:A:769:HIS:ND1	2.13	0.62
2:C:371:LYS:O	2:C:374:GLU:HG3	1.99	0.62
2:C:726:ARG:HH21	2:C:729:TYR:HB2	1.64	0.62
1:D:104:ARG:HB3	2:C:769:HIS:HD1	1.64	0.62
2:C:496:HIS:HA	2:C:499:ARG:NH2	2.14	0.62
2:C:776:HIS:O	2:C:778:ARG:NH1	2.32	0.62
2:C:311:HIS:CE1	2:C:360:LYS:HB2	2.34	0.62
2:A:27:SER:HA	2:A:30:MET:HG2	1.82	0.62
2:A:297:ASN:HA	2:A:300:ILE:HG12	1.81	0.62
2:A:365:ARG:HB2	2:A:368:TYR:CD1	2.34	0.62
2:A:412:ILE:HD13	2:A:444:VAL:HG13	1.82	0.62
2:C:545:GLU:OE1	2:C:546:ASN:ND2	2.33	0.62
2:C:655:LEU:O	2:C:659:LYS:HG2	1.99	0.62
2:A:403:LYS:HA	2:A:406:VAL:HB	1.80	0.62
1:D:19:PRO:HG2	1:D:22:PHE:HB2	1.81	0.62
1:D:48:TYR:O	1:D:51:THR:HB	2.00	0.62
2:A:134:VAL:HG22	2:A:185:LEU:HD23	1.81	0.62
2:A:198:GLN:OE1	2:A:213:ARG:HD2	2.00	0.62
2:C:585:LEU:HD13	2:C:634:THR:HG21	1.80	0.62
2:A:513:ALA:O	2:A:517:PHE:CD2	2.53	0.62
2:A:534:PHE:HA	2:A:537:TYR:CE2	2.35	0.62
2:A:585:LEU:HD13	2:A:634:THR:HG21	1.82	0.62
2:A:750:ILE:HG22	2:A:751:ARG:NH2	2.15	0.62
2:C:526:ARG:HG2	2:C:527:PHE:CD1	2.35	0.62
1:D:150:PHE:HE2	1:D:152:LEU:HD22	1.65	0.62
2:A:380:PHE:HB3	2:A:427:TYR:CZ	2.35	0.62
2:C:12:GLN:HG3	2:C:14:LYS:HE2	1.82	0.62
2:C:95:TYR:CD1	2:C:111:LEU:HD13	2.35	0.62
2:A:104:ILE:HA	2:A:107:ARG:HH11	1.65	0.61
2:A:607:MET:SD	2:A:649:LEU:HD23	2.39	0.61
2:A:677:PHE:HB2	2:A:696:VAL:HG22	1.82	0.61
1:B:48:TYR:O	1:B:51:THR:HB	2.00	0.61

Continued on next page...

Continued from previous page...

Atom-1	Atom-2	Interatomic distance (Å)	Clash overlap (Å)
2:C:102:GLY:C	2:C:107:ARG:HH12	2.03	0.61
2:C:226:ARG:HD2	2:C:229:GLN:HE22	1.66	0.61
2:C:604:TYR:HB2	2:C:641:PHE:HE1	1.65	0.61
2:C:682:ASN:ND2	2:C:684:ASP:OD2	2.34	0.61
2:A:183:VAL:HG21	2:A:227:LEU:HD11	1.81	0.61
2:A:271:PRO:HA	2:A:305:ARG:HH22	1.65	0.61
2:A:456:GLN:NE2	2:A:460:ILE:HG13	2.15	0.61
2:A:468:ILE:HG13	2:A:469:GLN:N	2.15	0.61
2:C:718:GLN:O	2:C:722:GLU:OE1	2.17	0.61
2:A:50:LEU:HD13	2:A:105:ILE:HG22	1.81	0.61
2:A:474:GLN:NE2	2:A:476:VAL:HA	2.16	0.61
2:C:378:GLU:OE1	2:C:382:LYS:NZ	2.28	0.61
2:A:296:LYS:HZ3	2:A:349:SER:HB2	1.64	0.61
2:A:543:TYR:HE2	2:A:556:LYS:HB3	1.64	0.61
2:C:499:ARG:HH11	2:C:499:ARG:HG3	1.66	0.61
2:C:748:GLN:O	2:C:752:GLU:HG3	2.00	0.61
1:D:16:ASN:HB2	2:C:493:ARG:CZ	2.31	0.61
2:A:114:VAL:HG22	2:A:118:TYR:CE1	2.35	0.61
2:A:308:LEU:HB2	2:A:312:ARG:HH22	1.64	0.61
2:A:438:CYS:O	2:A:442:SER:OG	2.13	0.61
2:A:506:GLN:O	2:A:510:LEU:HG	2.00	0.61
2:A:713:PRO:HB3	2:A:757:LEU:HD22	1.83	0.61
2:A:751:ARG:HA	2:A:751:ARG:NE	2.16	0.61
2:C:226:ARG:HD2	2:C:229:GLN:NE2	2.15	0.61
1:B:141:ALA:CB	2:A:589:LEU:HD13	2.31	0.61
2:A:568:ILE:HD12	2:A:584:PHE:CE1	2.35	0.61
2:A:528:THR:O	2:A:531:PRO:HD2	2.01	0.61
2:A:727:TYR:HB2	2:A:743:LEU:HD21	1.82	0.61
2:C:238:TYR:CD2	2:C:274:PHE:HB3	2.36	0.61
2:C:762:GLU:N	2:C:762:GLU:OE1	2.34	0.61
1:B:36:CYS:HB3	1:B:58:ILE:HG12	1.82	0.60
2:C:31:LYS:HD3	2:C:34:LEU:HD12	1.83	0.60
2:C:70:ILE:O	2:C:74:LEU:HD23	2.00	0.60
1:B:63:PHE:HZ	2:A:582:ARG:CB	2.14	0.60
2:A:275:HIS:O	2:A:279:LEU:HG	2.01	0.60
2:A:751:ARG:HH21	2:A:754:LEU:HD22	1.66	0.60
1:D:92:PRO:CB	2:C:637:ARG:NH2	2.51	0.60
2:A:620:ASP:OD1	2:A:622:LYS:N	2.35	0.60
2:C:196:ARG:HH12	2:C:200:GLN:N	1.98	0.60
1:B:39:ASN:HD22	1:B:63:PHE:N	2.00	0.60
1:D:148:PRO:O	1:D:149:SER:HB3	2.01	0.60

Continued on next page...

Continued from previous page...

Atom-1	Atom-2	Interatomic distance (Å)	Clash overlap (Å)
2:A:142:HIS:HE1	2:A:144:LEU:HB3	1.67	0.60
2:A:514:ARG:HH12	2:A:566:GLN:CG	2.14	0.60
2:C:440:VAL:O	2:C:444:VAL:HG23	2.02	0.60
1:B:150:PHE:HE2	1:B:152:LEU:HD22	1.65	0.60
1:D:36:CYS:HB3	1:D:58:ILE:HG12	1.82	0.60
2:A:81:LEU:HD22	2:A:117:VAL:HG21	1.84	0.60
2:A:311:HIS:CE1	2:A:360:LYS:HB2	2.36	0.60
2:C:253:CYS:SG	2:C:259:GLN:NE2	2.72	0.60
2:C:550:ASP:OD1	2:C:552:LYS:N	2.35	0.60
1:D:39:ASN:HD22	1:D:63:PHE:N	2.00	0.60
2:A:606:PHE:HA	2:A:609:GLN:NE2	2.17	0.60
2:C:611:PHE:CE2	2:C:649:LEU:HD22	2.36	0.60
2:C:403:LYS:O	2:C:407:ASP:N	2.27	0.60
2:C:426:GLU:H	2:C:426:GLU:CD	2.06	0.60
2:A:445:LEU:HD21	2:A:490:LEU:HA	1.84	0.59
2:C:33:CYS:HA	2:C:36:LYS:HG2	1.84	0.59
2:A:487:GLU:OE1	2:A:487:GLU:N	2.35	0.59
2:C:169:ASP:O	2:C:172:THR:N	2.34	0.59
2:C:194:TRP:O	2:C:197:MET:HB2	2.02	0.59
2:C:17:ASP:OD1	2:C:18:GLU:N	2.35	0.59
2:C:503:PRO:HB3	2:C:543:TYR:CE1	2.37	0.59
1:B:148:PRO:O	1:B:149:SER:HB3	2.01	0.59
2:A:359:MET:HE1	2:A:405:PRO:HA	1.83	0.59
2:A:550:ASP:OD1	2:A:552:LYS:N	2.36	0.59
2:A:469:GLN:OE1	2:A:524:ARG:NH2	2.29	0.59
2:A:647:GLU:HG3	2:A:650:ARG:HH21	1.68	0.59
2:C:537:TYR:OH	2:C:586:GLN:HG3	2.03	0.59
1:B:93:TRP:CH2	2:A:637:ARG:NH2	2.70	0.59
2:C:468:ILE:HG13	2:C:469:GLN:OE1	2.02	0.59
2:A:255:ASP:OD1	2:A:256:ALA:N	2.33	0.59
2:A:577:ALA:O	2:A:581:LEU:HG	2.02	0.59
2:A:673:CYS:HA	2:A:676:LEU:HD23	1.85	0.59
2:A:775:GLU:HA	2:A:780:ARG:HB3	1.82	0.59
2:C:506:GLN:HE22	2:C:510:LEU:HD22	1.67	0.59
2:C:621:SER:HA	2:C:624:GLN:OE1	2.02	0.59
2:A:150:ARG:NH1	2:A:186:ASN:OD1	2.36	0.59
2:A:194:TRP:HZ3	2:A:258:ALA:HB2	1.68	0.59
2:C:378:GLU:OE2	2:C:379:ILE:HG13	2.03	0.59
2:C:730:PHE:HA	2:C:733:LYS:HB3	1.84	0.59
2:C:746:LEU:HD12	2:C:747:ILE:N	2.18	0.59
2:A:347:VAL:O	2:A:351:GLN:HG2	2.02	0.59

Continued on next page...

Continued from previous page...

Atom-1	Atom-2	Interatomic distance (Å)	Clash overlap (Å)
2:C:495:ILE:O	2:C:499:ARG:NH1	2.36	0.59
2:C:512:THR:O	2:C:515:LYS:HG2	2.03	0.59
2:C:606:PHE:HA	2:C:609:GLN:NE2	2.18	0.59
1:D:104:ARG:HD2	2:C:769:HIS:CE1	2.38	0.58
2:A:62:SER:O	2:A:65:GLU:HG3	2.02	0.58
2:C:268:GLN:O	2:C:305:ARG:NH2	2.28	0.58
2:C:563:PHE:O	2:C:567:THR:HG23	2.03	0.58
1:D:4:LEU:HB2	1:D:31:ILE:HD13	1.85	0.58
2:A:605:GLU:O	2:A:609:GLN:OE1	2.21	0.58
2:A:648:PRO:C	2:A:652:GLN:HE22	2.07	0.58
2:C:198:GLN:HG2	2:C:213:ARG:HH11	1.68	0.58
2:C:450:GLU:HA	2:C:497:LEU:HD22	1.84	0.58
2:C:717:VAL:HA	2:C:720:PHE:CD2	2.38	0.58
1:B:71:GLU:HB3	1:B:72:GLN:OE1	2.04	0.58
1:D:71:GLU:HB3	1:D:72:GLN:OE1	2.04	0.58
2:A:127:LYS:O	2:A:131:LYS:HG2	2.04	0.58
2:A:529:LEU:HD23	2:A:532:LEU:HD12	1.84	0.58
2:C:60:PRO:HG2	2:C:61:LYS:HD2	1.85	0.58
2:C:330:GLN:O	2:C:334:THR:HG23	2.03	0.58
2:C:412:ILE:HB	2:C:449:THR:HG21	1.84	0.58
1:B:18:LEU:HD12	1:B:18:LEU:N	2.18	0.58
2:A:169:ASP:OD2	2:A:171:GLU:HB2	2.02	0.58
2:A:270:PHE:HB2	2:A:275:HIS:CE1	2.39	0.58
2:C:433:ARG:NH2	2:C:473:ASP:OD2	2.37	0.58
2:C:468:ILE:O	2:C:524:ARG:NH2	2.37	0.58
2:C:230:LEU:O	2:C:233:VAL:HG22	2.02	0.58
2:C:323:LYS:HZ3	2:C:365:ARG:HH12	1.48	0.58
2:C:503:PRO:HB3	2:C:543:TYR:HE1	1.69	0.58
2:C:583:LEU:HD23	2:C:586:GLN:NE2	2.19	0.58
1:B:4:LEU:HB2	1:B:31:ILE:HD13	1.85	0.58
2:A:197:MET:HG2	2:A:200:GLN:HE21	1.67	0.58
2:C:514:ARG:CZ	2:C:567:THR:HG22	2.34	0.58
2:A:138:ARG:HA	2:A:138:ARG:NE	2.19	0.58
2:A:700:LEU:HD11	2:A:723:ILE:HG23	1.84	0.58
2:C:471:GLN:CB	2:C:476:VAL:H	2.08	0.58
2:A:26:GLN:HB3	2:A:49:MET:SD	2.43	0.58
2:A:353:SER:O	2:A:357:LEU:HD13	2.04	0.58
2:A:362:TYR:HB3	2:A:365:ARG:HH11	1.68	0.58
2:A:541:PHE:HD1	2:A:544:LYS:HZ1	1.51	0.58
2:A:718:GLN:O	2:A:722:GLU:OE1	2.21	0.58
2:C:486:ASP:OD1	2:C:487:GLU:HG3	2.04	0.58

Continued on next page...

Continued from previous page...

Atom-1	Atom-2	Interatomic distance (Å)	Clash overlap (Å)
2:A:29:GLN:HA	2:A:32:ARG:CG	2.34	0.58
2:C:375:THR:O	2:C:378:GLU:HG3	2.04	0.58
2:A:452:VAL:HB	2:A:497:LEU:HD13	1.86	0.57
2:C:75:HIS:O	2:C:78:GLU:HG3	2.04	0.57
1:D:18:LEU:HD12	1:D:18:LEU:N	2.18	0.57
2:A:114:VAL:HG22	2:A:118:TYR:HE1	1.68	0.57
2:A:681:ARG:HG2	2:A:689:GLU:HG2	1.87	0.57
2:A:673:CYS:O	2:A:676:LEU:HB2	2.04	0.57
2:C:590:ALA:O	2:C:593:GLU:HG3	2.03	0.57
1:B:67:LEU:HD23	1:B:67:LEU:O	2.05	0.57
1:D:67:LEU:HD23	1:D:67:LEU:O	2.05	0.57
2:A:638:MET:HB3	2:A:641:PHE:CE2	2.38	0.57
2:A:760:SER:O	2:A:763:THR:HG22	2.04	0.57
2:C:253:CYS:C	2:C:254:ARG:HD3	2.24	0.57
2:C:256:ALA:O	2:C:260:GLU:HG3	2.05	0.57
2:A:158:ARG:HA	2:A:226:ARG:HE	1.70	0.57
2:A:297:ASN:OD1	2:A:298:ILE:N	2.37	0.57
2:A:723:ILE:O	2:A:727:TYR:HD1	1.88	0.57
2:C:707:ALA:O	2:C:716:GLN:NE2	2.38	0.57
1:B:40:LEU:H	1:B:40:LEU:HD22	1.68	0.57
1:B:152:LEU:HD21	1:B:165:TYR:CE2	2.40	0.57
2:A:122:PHE:HD1	2:A:124:GLN:HE22	1.53	0.57
2:A:715:LEU:HA	2:A:718:GLN:HG3	1.87	0.57
2:C:131:LYS:NZ	2:C:135:GLU:OE2	2.37	0.57
2:C:354:LEU:O	2:C:357:LEU:HG	2.04	0.57
2:A:311:HIS:NE2	2:A:360:LYS:HB2	2.20	0.57
2:A:422:HIS:O	2:A:425:PHE:HB2	2.05	0.57
2:C:198:GLN:NE2	2:C:255:ASP:OD2	2.37	0.57
2:C:319:PRO:HB2	2:C:322:ILE:HG12	1.85	0.57
1:B:2:LEU:HD11	1:B:152:LEU:HD12	1.87	0.56
2:A:563:PHE:O	2:A:567:THR:HG23	2.05	0.56
2:C:643:GLU:CD	2:C:650:ARG:HH22	2.08	0.56
2:A:305:ARG:O	2:A:308:LEU:HG	2.05	0.56
2:A:612:SER:HA	2:A:615:GLU:OE1	2.05	0.56
2:C:39:LEU:HD12	2:C:40:MET:N	2.20	0.56
2:C:192:LYS:HE2	2:C:192:LYS:HA	1.87	0.56
2:C:412:ILE:HG12	2:C:444:VAL:HG22	1.86	0.56
2:C:445:LEU:CD1	2:C:490:LEU:HD23	2.35	0.56
2:C:517:PHE:CD2	2:C:532:LEU:HD11	2.40	0.56
2:C:570:ALA:HA	2:C:573:LYS:HZ1	1.68	0.56
2:A:94:LEU:HD13	2:A:114:VAL:HG21	1.88	0.56

Continued on next page...

Continued from previous page...

Atom-1	Atom-2	Interatomic distance (Å)	Clash overlap (Å)
2:A:577:ALA:O	2:A:580:PRO:HD2	2.05	0.56
2:C:182:PHE:O	2:C:186:ASN:ND2	2.37	0.56
2:A:32:ARG:NH1	2:A:41:ASP:OD2	2.38	0.56
2:A:713:PRO:O	2:A:717:VAL:HG22	2.05	0.56
2:A:719:LEU:HA	2:A:722:GLU:OE1	2.05	0.56
2:A:739:THR:OG1	2:A:742:VAL:HG23	2.04	0.56
2:A:749:LYS:HA	2:A:752:GLU:HG3	1.87	0.56
2:C:563:PHE:HA	2:C:566:GLN:OE1	2.05	0.56
2:A:218:ILE:O	2:A:222:THR:HG23	2.04	0.56
2:A:296:LYS:NZ	2:A:349:SER:HB2	2.21	0.56
2:C:155:GLN:O	2:C:158:ARG:HD2	2.04	0.56
2:C:454:GLN:HE22	2:C:509:ILE:CG1	2.15	0.56
1:D:152:LEU:HD21	1:D:165:TYR:CE2	2.40	0.56
2:A:647:GLU:CA	2:A:650:ARG:HE	2.05	0.56
2:C:95:TYR:HA	2:C:98:VAL:HG22	1.88	0.56
2:C:743:LEU:HD13	2:C:746:LEU:HD21	1.87	0.56
2:A:279:LEU:O	2:A:283:LEU:HG	2.06	0.56
2:A:561:PHE:O	2:A:565:HIS:ND1	2.38	0.56
2:A:705:LYS:O	2:A:709:GLN:HG3	2.06	0.56
2:A:718:GLN:HA	2:A:721:ILE:HD12	1.87	0.56
2:C:512:THR:OG1	2:C:515:LYS:HE3	2.06	0.56
2:C:663:LYS:NZ	2:C:710:CYS:SG	2.67	0.56
2:A:50:LEU:HD22	2:A:105:ILE:HG21	1.88	0.56
2:C:65:GLU:HA	2:C:68:MET:HG2	1.88	0.56
2:C:290:HIS:O	2:C:339:ARG:NH1	2.38	0.56
2:A:230:LEU:HB2	2:A:233:VAL:HG23	1.87	0.56
2:A:348:VAL:HG13	2:A:401:LEU:HD12	1.88	0.56
1:B:63:PHE:CZ	2:A:582:ARG:HG2	2.40	0.56
1:B:152:LEU:HD21	1:B:165:TYR:HE2	1.71	0.56
2:A:374:GLU:O	2:A:378:GLU:OE1	2.24	0.56
2:A:682:ASN:ND2	2:A:685:LYS:HG3	2.18	0.56
2:A:722:GLU:O	2:A:726:ARG:HG2	2.06	0.56
2:C:232:GLY:O	2:C:237:ARG:NH1	2.28	0.56
2:A:387:HIS:NE2	2:A:426:GLU:O	2.38	0.55
2:A:514:ARG:HH12	2:A:566:GLN:HE21	1.54	0.55
2:C:52:GLU:O	2:C:55:THR:HG22	2.06	0.55
2:C:105:ILE:O	2:C:109:TYR:HD2	1.89	0.55
2:C:126:ARG:NH1	2:C:166:GLU:OE2	2.36	0.55
2:C:563:PHE:HA	2:C:566:GLN:NE2	2.21	0.55
2:C:605:GLU:O	2:C:609:GLN:NE2	2.39	0.55
2:A:642:SER:O	2:A:646:HIS:N	2.28	0.55

Continued on next page...

Continued from previous page...

Atom-1	Atom-2	Interatomic distance (Å)	Clash overlap (Å)
2:A:648:PRO:O	2:A:652:GLN:NE2	2.39	0.55
2:A:761:GLU:OE1	2:A:761:GLU:N	2.39	0.55
2:A:190:MET:SD	2:A:191:ASN:N	2.79	0.55
2:C:330:GLN:NE2	2:C:331:GLN:HG2	2.22	0.55
2:C:739:THR:OG1	2:C:742:VAL:HG23	2.07	0.55
2:A:430:TYR:HA	2:A:433:ARG:HE	1.72	0.55
2:C:206:ARG:HH11	2:C:209:ARG:CZ	2.19	0.55
2:C:243:LEU:HD12	2:C:244:THR:N	2.22	0.55
2:C:246:ILE:HG13	2:C:247:LEU:N	2.22	0.55
2:C:430:TYR:HB2	2:C:473:ASP:HA	1.88	0.55
2:A:213:ARG:NH1	2:A:257:LEU:HD22	2.21	0.55
2:C:359:MET:HE1	2:C:408:THR:HB	1.87	0.55
2:C:742:VAL:O	2:C:745:GLN:HG2	2.07	0.55
2:A:638:MET:HB3	2:A:641:PHE:HE2	1.70	0.55
2:A:697:MET:O	2:A:701:LYS:HG2	2.06	0.55
2:A:716:GLN:HG2	2:A:720:PHE:CE2	2.41	0.55
2:C:346:ASP:O	2:C:350:LEU:HD23	2.06	0.55
2:C:356:ASN:C	2:C:360:LYS:HZ1	2.10	0.55
2:C:398:LEU:HD23	2:C:428:PHE:CE1	2.27	0.55
2:C:524:ARG:HA	2:C:526:ARG:NH1	2.22	0.55
2:C:609:GLN:O	2:C:612:SER:OG	2.22	0.55
2:A:165:GLY:N	2:A:231:GLU:OE1	2.39	0.55
2:A:330:GLN:NE2	2:A:331:GLN:HG2	2.22	0.55
2:A:530:PRO:HB2	2:A:531:PRO:HD3	1.89	0.55
2:A:577:ALA:CA	2:A:613:LEU:HD21	2.37	0.55
2:A:279:LEU:O	2:A:283:LEU:N	2.38	0.55
2:A:739:THR:OG1	2:A:741:GLN:NE2	2.39	0.55
2:C:528:THR:O	2:C:531:PRO:HD2	2.06	0.55
2:C:662:LYS:O	2:C:666:GLN:HB2	2.07	0.55
2:C:751:ARG:HA	2:C:751:ARG:NE	2.22	0.55
1:D:2:LEU:HD11	1:D:152:LEU:HD12	1.87	0.55
2:A:200:GLN:O	2:A:209:ARG:NH1	2.39	0.55
2:A:335:VAL:O	2:A:339:ARG:HG2	2.07	0.55
2:A:581:LEU:HD21	2:A:613:LEU:HD23	1.89	0.55
2:C:187:PHE:HE1	2:C:220:VAL:HG13	1.72	0.55
2:C:299:ILE:HA	2:C:302:LEU:HD12	1.89	0.55
2:C:711:MET:H	2:C:716:GLN:NE2	2.05	0.55
2:A:414:THR:HA	2:A:417:LYS:HE2	1.89	0.54
2:C:95:TYR:CE1	2:C:111:LEU:HB2	2.40	0.54
2:C:702:LYS:HA	2:C:705:LYS:CE	2.36	0.54
1:B:2:LEU:O	1:B:2:LEU:HD23	2.07	0.54

Continued on next page...

Continued from previous page...

Atom-1	Atom-2	Interatomic distance (Å)	Clash overlap (Å)
1:D:152:LEU:HD21	1:D:165:TYR:HE2	1.71	0.54
2:A:180:MET:HE1	2:A:237:ARG:HE	1.72	0.54
2:A:226:ARG:HD2	2:A:229:GLN:HE22	1.72	0.54
2:A:452:VAL:HG13	2:A:456:GLN:HB3	1.89	0.54
2:C:493:ARG:HA	2:C:496:HIS:ND1	2.22	0.54
2:C:597:GLU:OE1	2:C:597:GLU:N	2.38	0.54
2:C:710:CYS:HB2	2:C:716:GLN:HE21	1.72	0.54
2:A:330:GLN:O	2:A:334:THR:HG23	2.08	0.54
2:C:495:ILE:HG22	2:C:499:ARG:NH2	2.21	0.54
2:C:517:PHE:CE2	2:C:532:LEU:HD11	2.43	0.54
2:A:162:PRO:HA	2:A:166:GLU:OE1	2.08	0.54
2:A:526:ARG:HD2	2:A:527:PHE:CZ	2.42	0.54
2:A:627:ALA:O	2:A:630:LEU:HG	2.07	0.54
2:C:103:ASN:OD1	2:C:104:ILE:N	2.39	0.54
2:C:206:ARG:HG2	2:C:209:ARG:HH21	1.71	0.54
2:A:504:ASP:N	2:A:504:ASP:OD1	2.38	0.54
2:A:190:MET:HE1	2:A:220:VAL:HG22	1.89	0.54
2:A:514:ARG:CZ	2:A:567:THR:HG22	2.38	0.54
2:A:622:LYS:O	2:A:625:LEU:HG	2.08	0.54
2:A:692:GLY:O	2:A:696:VAL:HG23	2.06	0.54
2:C:380:PHE:CE1	2:C:398:LEU:HD21	2.42	0.54
2:C:454:GLN:NE2	2:C:508:LEU:HD22	2.22	0.54
2:C:570:ALA:HA	2:C:573:LYS:HZ2	1.72	0.54
2:C:692:GLY:O	2:C:695:ARG:HD3	2.07	0.54
2:C:122:PHE:HD1	2:C:124:GLN:NE2	2.06	0.54
2:C:377:VAL:HG13	2:C:427:TYR:OH	2.07	0.54
2:C:495:ILE:HG22	2:C:499:ARG:HH12	1.73	0.54
2:C:678:TRP:O	2:C:689:GLU:HG2	2.07	0.54
2:C:695:ARG:HA	2:C:698:GLU:HG2	1.89	0.54
2:A:33:CYS:HB3	2:A:38:LYS:O	2.07	0.54
2:A:675:HIS:O	2:A:679:SER:OG	2.22	0.54
2:C:410:ASN:OD1	2:C:411:ASN:N	2.40	0.54
2:C:454:GLN:NE2	2:C:509:ILE:HG12	2.17	0.54
2:C:655:LEU:O	2:C:659:LYS:HE2	2.08	0.54
2:A:726:ARG:O	2:A:730:PHE:HD2	1.91	0.54
2:C:416:LEU:HD13	2:C:456:GLN:HB3	1.88	0.54
2:C:670:VAL:HG11	2:C:706:ILE:HD12	1.90	0.54
2:C:704:LEU:HD21	2:C:727:TYR:OH	2.08	0.54
1:D:63:PHE:HZ	2:C:582:ARG:HD3	1.72	0.54
2:A:681:ARG:HE	2:A:689:GLU:HG2	1.73	0.54
2:C:507:TYR:OH	2:C:556:LYS:O	2.24	0.54

Continued on next page...

Continued from previous page...

Atom-1	Atom-2	Interatomic distance (Å)	Clash overlap (Å)
2:A:69:ALA:O	2:A:72:ASP:OD1	2.26	0.53
2:A:143:PRO:HD3	2:A:196:ARG:HH22	1.72	0.53
2:A:251:VAL:HG12	2:A:289:LEU:HD21	1.90	0.53
2:A:380:PHE:HZ	2:A:398:LEU:HD21	1.72	0.53
2:A:526:ARG:HD2	2:A:527:PHE:CE1	2.43	0.53
2:A:556:LYS:HA	2:A:559:LYS:CE	2.38	0.53
2:C:716:GLN:HB3	2:C:720:PHE:CZ	2.43	0.53
1:D:2:LEU:O	1:D:2:LEU:HD23	2.07	0.53
2:A:496:HIS:HA	2:A:499:ARG:CZ	2.38	0.53
2:A:430:TYR:CG	2:A:473:ASP:HB2	2.43	0.53
2:A:491:VAL:O	2:A:495:ILE:HG12	2.09	0.53
2:A:590:ALA:O	2:A:594:ILE:HG12	2.09	0.53
2:A:763:THR:HA	2:A:766:ILE:HD12	1.89	0.53
2:C:393:ALA:HA	2:C:396:LYS:HG2	1.91	0.53
2:C:579:LEU:HA	2:C:582:ARG:HG2	1.90	0.53
1:B:141:ALA:HB2	2:A:586:GLN:NE2	2.23	0.53
2:A:469:GLN:HB2	2:A:524:ARG:NH2	2.24	0.53
2:A:602:VAL:HA	2:A:605:GLU:OE1	2.09	0.53
2:C:224:LEU:HD11	2:C:270:PHE:HZ	1.73	0.53
1:D:92:PRO:CB	2:C:637:ARG:HH22	2.16	0.53
2:A:238:TYR:CE2	2:A:274:PHE:HB3	2.43	0.53
2:A:496:HIS:HA	2:A:499:ARG:HH12	1.73	0.53
2:C:30:MET:HG3	2:C:46:ALA:HB2	1.91	0.53
2:C:227:LEU:HA	2:C:230:LEU:HD12	1.89	0.53
2:C:412:ILE:HD13	2:C:444:VAL:HA	1.91	0.53
2:C:437:SER:HA	2:C:440:VAL:HG22	1.91	0.53
2:C:563:PHE:HA	2:C:566:GLN:HE22	1.73	0.53
2:C:643:GLU:OE1	2:C:682:ASN:ND2	2.42	0.53
2:A:105:ILE:HG23	2:A:109:TYR:CE2	2.44	0.53
2:A:323:LYS:HE3	2:A:368:TYR:CE2	2.44	0.53
2:A:491:VAL:HA	2:A:494:PHE:CD2	2.32	0.53
2:C:206:ARG:HH11	2:C:209:ARG:NH2	2.07	0.53
2:C:333:ALA:C	2:C:337:GLN:HE22	2.12	0.53
2:A:495:ILE:HG22	2:A:499:ARG:HH21	1.73	0.53
2:A:525:ILE:HA	2:A:528:THR:OG1	2.09	0.53
2:A:557:CYS:HA	2:A:560:ILE:HG12	1.91	0.53
2:A:663:LYS:NZ	2:A:706:ILE:O	2.25	0.53
2:A:769:HIS:O	2:A:773:THR:OG1	2.22	0.53
2:C:570:ALA:O	2:C:573:LYS:HG2	2.09	0.53
2:A:701:LYS:HD3	2:A:701:LYS:N	2.24	0.53
2:C:413:LEU:HD21	2:C:452:VAL:HG22	1.91	0.53

Continued on next page...

Continued from previous page...

Atom-1	Atom-2	Interatomic distance (Å)	Clash overlap (Å)
2:C:198:GLN:NE2	2:C:213:ARG:HH12	2.03	0.52
2:C:578:GLU:CD	2:C:578:GLU:H	2.11	0.52
1:B:101:LEU:HD12	1:B:101:LEU:O	2.09	0.52
2:A:247:LEU:O	2:A:251:VAL:HG22	2.08	0.52
2:C:297:ASN:OD1	2:C:298:ILE:HG13	2.09	0.52
2:C:643:GLU:OE2	2:C:650:ARG:NH1	2.31	0.52
1:B:39:ASN:HA	1:B:64:ASP:OD2	2.10	0.52
1:B:63:PHE:CZ	2:A:582:ARG:CB	2.92	0.52
2:A:233:VAL:HG12	2:A:274:PHE:CE2	2.44	0.52
2:A:323:LYS:NZ	2:A:325:PHE:HB3	2.24	0.52
1:B:174:VAL:HG12	1:B:175:GLU:N	2.24	0.52
1:D:40:LEU:H	1:D:40:LEU:HD22	1.69	0.52
2:A:403:LYS:NZ	2:A:406:VAL:HG11	2.24	0.52
2:A:495:ILE:HG22	2:A:499:ARG:NH2	2.23	0.52
2:C:26:GLN:HG2	2:C:48:ASN:OD1	2.09	0.52
2:C:267:ILE:HG12	2:C:302:LEU:HD21	1.90	0.52
1:B:141:ALA:HB3	2:A:589:LEU:HD13	1.91	0.52
1:D:9:LEU:HD22	1:D:135:ALA:HB3	1.92	0.52
1:D:174:VAL:HG12	1:D:175:GLU:N	2.24	0.52
2:C:252:ASN:O	2:C:254:ARG:NH1	2.35	0.52
2:C:767:ASN:C	2:C:771:HIS:HD1	2.08	0.52
1:B:164:VAL:HG13	1:B:175:GLU:HB3	1.91	0.52
2:A:501:GLU:OE2	2:A:505:GLN:HB2	2.10	0.52
2:C:26:GLN:HB2	2:C:49:MET:HB2	1.92	0.52
2:C:72:ASP:HA	2:C:75:HIS:HD1	1.75	0.52
2:C:191:ASN:O	2:C:195:VAL:HG22	2.09	0.52
2:C:506:GLN:NE2	2:C:510:LEU:HB2	2.25	0.52
2:C:620:ASP:O	2:C:624:GLN:N	2.38	0.52
2:A:563:PHE:HA	2:A:566:GLN:NE2	2.25	0.52
1:D:40:LEU:HD23	1:D:40:LEU:N	2.24	0.52
2:C:158:ARG:HG2	2:C:159:ASN:CG	2.30	0.52
1:B:3:VAL:HG22	1:B:33:HIS:CB	2.38	0.52
2:A:127:LYS:O	2:A:130:LEU:HG	2.10	0.52
2:A:241:ILE:HG13	2:A:242:VAL:N	2.23	0.52
2:A:645:ASN:O	2:A:648:PRO:HD2	2.10	0.52
2:A:716:GLN:HG2	2:A:720:PHE:HE2	1.73	0.52
1:D:164:VAL:HG13	1:D:175:GLU:HB3	1.91	0.52
2:A:650:ARG:HH12	2:A:695:ARG:NH2	2.07	0.52
2:A:741:GLN:NE2	2:A:742:VAL:HG23	2.25	0.52
2:C:29:GLN:HA	2:C:32:ARG:NE	2.22	0.52
2:C:439:TYR:O	2:C:442:SER:OG	2.26	0.52

Continued on next page...

Continued from previous page...

Atom-1	Atom-2	Interatomic distance (Å)	Clash overlap (Å)
2:C:598:ASN:O	2:C:601:THR:OG1	2.26	0.52
1:D:39:ASN:HA	1:D:64:ASP:OD2	2.10	0.51
2:A:124:GLN:HA	2:A:171:GLU:O	2.09	0.51
2:A:202:HIS:O	2:A:209:ARG:NH2	2.39	0.51
2:A:533:VAL:HG12	2:A:537:TYR:CZ	2.44	0.51
2:C:96:GLU:OE1	2:C:96:GLU:N	2.39	0.51
1:B:35:LEU:HD21	1:B:75:VAL:HG11	1.92	0.51
1:B:40:LEU:HD23	1:B:40:LEU:N	2.24	0.51
1:D:101:LEU:HD12	1:D:101:LEU:O	2.09	0.51
2:A:578:GLU:HA	2:A:581:LEU:HD12	1.91	0.51
2:A:770:PHE:O	2:A:774:LEU:HD23	2.10	0.51
2:A:775:GLU:HG2	2:A:780:ARG:HG2	1.92	0.51
2:C:176:ILE:HG21	2:C:237:ARG:CZ	2.40	0.51
2:C:744:ASN:HA	2:C:747:ILE:HG12	1.92	0.51
2:A:374:GLU:HG3	2:A:420:HIS:CE1	2.45	0.51
2:A:638:MET:O	2:A:646:HIS:HE1	1.93	0.51
2:A:648:PRO:C	2:A:652:GLN:NE2	2.64	0.51
2:A:704:LEU:HD11	2:A:727:TYR:OH	2.09	0.51
2:C:489:SER:O	2:C:493:ARG:NH1	2.42	0.51
1:D:168:ILE:HD12	1:D:173:LYS:HD2	1.93	0.51
2:A:238:TYR:HE2	2:A:278:THR:OG1	1.93	0.51
2:A:452:VAL:HG11	2:A:460:ILE:HD12	1.92	0.51
2:A:725:ASN:HB3	2:A:726:ARG:HH22	1.76	0.51
2:A:747:ILE:O	2:A:751:ARG:HG2	2.11	0.51
2:A:760:SER:HB3	2:A:761:GLU:OE1	2.10	0.51
2:C:195:VAL:O	2:C:198:GLN:HG3	2.10	0.51
2:C:410:ASN:HB2	2:C:447:TYR:CE1	2.45	0.51
1:B:168:ILE:HD12	1:B:173:LYS:HD2	1.93	0.51
2:A:577:ALA:C	2:A:580:PRO:HD2	2.30	0.51
2:C:324:LEU:HD22	2:C:328:PHE:HE2	1.75	0.51
2:C:558:GLN:NE2	2:C:598:ASN:HB3	2.26	0.51
2:A:26:GLN:O	2:A:30:MET:HE3	2.10	0.51
2:A:244:THR:O	2:A:248:GLU:OE1	2.29	0.51
2:A:416:LEU:HB3	2:A:456:GLN:OE1	2.11	0.51
2:A:563:PHE:HA	2:A:566:GLN:OE1	2.11	0.51
2:A:572:ILE:HD11	2:A:584:PHE:HZ	1.74	0.51
2:A:620:ASP:O	2:A:624:GLN:HG3	2.11	0.51
2:A:771:HIS:O	2:A:780:ARG:NH1	2.44	0.51
2:A:142:HIS:CE1	2:A:144:LEU:HB3	2.46	0.51
2:A:552:LYS:HD3	2:A:556:LYS:HZ1	1.76	0.51
2:C:375:THR:HA	2:C:378:GLU:HG3	1.92	0.51

Continued on next page...

Continued from previous page...

Atom-1	Atom-2	Interatomic distance (Å)	Clash overlap (Å)
2:C:533:VAL:HG12	2:C:537:TYR:CE2	2.46	0.51
2:C:535:ALA:O	2:C:538:GLN:HG3	2.11	0.51
2:A:80:TYR:O	2:A:84:GLU:OE1	2.29	0.51
2:A:364:ASP:OD1	2:A:365:ARG:HG2	2.11	0.51
2:C:67:TYR:CE1	2:C:148:PHE:HB3	2.46	0.51
2:C:750:ILE:HG22	2:C:751:ARG:HH22	1.75	0.51
1:B:9:LEU:HD22	1:B:135:ALA:HB3	1.92	0.51
2:A:127:LYS:HZ1	2:A:174:GLY:H	1.59	0.51
2:A:194:TRP:CH2	2:A:258:ALA:HB2	2.46	0.51
2:C:468:ILE:HG13	2:C:469:GLN:CD	2.31	0.51
2:C:578:GLU:HB3	2:C:582:ARG:HH22	1.74	0.51
2:A:403:LYS:O	2:A:407:ASP:N	2.27	0.51
2:A:454:GLN:OE1	2:A:509:ILE:HG12	2.11	0.51
2:A:578:GLU:HG2	2:A:582:ARG:HH22	1.76	0.51
2:A:581:LEU:CD2	2:A:613:LEU:HD23	2.40	0.51
2:C:16:LEU:HD13	2:C:62:SER:HB3	1.93	0.51
2:C:285:ALA:O	2:C:288:GLU:HG3	2.11	0.51
2:A:228:SER:HB3	2:A:269:VAL:HG13	1.94	0.50
2:C:472:PRO:O	2:C:474:GLN:N	2.44	0.50
2:C:495:ILE:CG2	2:C:499:ARG:HH12	2.23	0.50
2:C:729:TYR:O	2:C:733:LYS:HB2	2.11	0.50
2:A:682:ASN:ND2	2:A:684:ASP:HB2	2.26	0.50
2:A:113:THR:HG22	2:A:152:TYR:OH	2.12	0.50
2:A:236:GLU:OE2	2:A:240:GLN:NE2	2.45	0.50
2:A:387:HIS:HE1	2:A:433:ARG:NH1	2.09	0.50
2:A:579:LEU:HB3	2:A:580:PRO:HD3	1.94	0.50
2:A:733:LYS:CE	2:A:735:ASN:HD21	2.24	0.50
2:C:471:GLN:HB3	2:C:472:PRO:CD	2.42	0.50
2:C:530:PRO:HB2	2:C:531:PRO:HD3	1.93	0.50
2:C:614:TYR:O	2:C:618:ILE:HB	2.11	0.50
2:A:370:ASP:O	2:A:374:GLU:OE1	2.30	0.50
2:A:460:ILE:O	2:A:464:VAL:HG23	2.11	0.50
2:A:554:GLU:O	2:A:558:GLN:HG3	2.12	0.50
2:C:177:SER:HA	2:C:180:MET:CE	2.42	0.50
2:C:552:LYS:HA	2:C:555:LYS:HG2	1.94	0.50
2:C:662:LYS:CG	2:C:664:PRO:HD2	2.41	0.50
2:A:624:GLN:O	2:A:628:ILE:HG12	2.11	0.50
2:C:196:ARG:NH1	2:C:199:HIS:HB3	2.27	0.50
2:C:463:LEU:O	2:C:466:THR:OG1	2.21	0.50
2:C:655:LEU:HD12	2:C:656:ALA:N	2.26	0.50
2:A:193:LEU:HA	2:A:196:ARG:HE	1.76	0.50

Continued on next page...

Continued from previous page...

Atom-1	Atom-2	Interatomic distance (Å)	Clash overlap (Å)
2:C:105:ILE:HD11	2:C:145:ARG:HD2	1.94	0.50
1:D:35:LEU:HD21	1:D:75:VAL:HG11	1.92	0.50
2:A:404:ILE:HB	2:A:405:PRO:HD3	1.93	0.50
2:A:657:ALA:O	2:A:660:LEU:HD23	2.12	0.50
2:C:124:GLN:HA	2:C:172:THR:CA	2.35	0.50
2:C:190:MET:SD	2:C:191:ASN:N	2.84	0.50
2:C:308:LEU:O	2:C:312:ARG:HB2	2.12	0.50
2:C:471:GLN:HB2	2:C:476:VAL:N	2.10	0.50
2:C:643:GLU:HB2	2:C:684:ASP:OD2	2.11	0.50
1:D:104:ARG:HB3	2:C:769:HIS:CE1	2.47	0.50
2:A:177:SER:O	2:A:180:MET:HG2	2.11	0.50
2:A:388:ILE:HG21	2:A:395:SER:HB2	1.93	0.50
2:A:690:LEU:HD12	2:A:692:GLY:H	1.76	0.50
2:C:60:PRO:HG3	2:C:211:ARG:HH12	1.77	0.50
2:C:327:ILE:O	2:C:330:GLN:HG3	2.12	0.50
2:A:116:VAL:HG23	2:A:160:ILE:HD13	1.94	0.49
2:A:718:GLN:O	2:A:721:ILE:HB	2.12	0.49
2:C:143:PRO:HG2	2:C:200:GLN:OE1	2.11	0.49
2:C:289:LEU:O	2:C:339:ARG:NH2	2.34	0.49
2:C:524:ARG:HA	2:C:526:ARG:HH11	1.76	0.49
1:B:141:ALA:CB	2:A:586:GLN:HE22	2.24	0.49
1:D:3:VAL:HG22	1:D:33:HIS:CB	2.37	0.49
2:A:502:ASP:N	2:A:502:ASP:OD1	2.46	0.49
2:A:508:LEU:HA	2:A:511:ASN:OD1	2.13	0.49
2:A:538:GLN:O	2:A:541:PHE:HB2	2.13	0.49
2:C:216:LEU:HA	2:C:219:LEU:HD13	1.94	0.49
2:C:328:PHE:O	2:C:332:VAL:HG22	2.12	0.49
1:D:70:PRO:HG2	1:D:73:LYS:HE3	1.95	0.49
2:A:359:MET:SD	2:A:404:ILE:HG22	2.51	0.49
2:A:685:LYS:HD2	2:A:689:GLU:O	2.12	0.49
2:A:749:LYS:HA	2:A:752:GLU:CG	2.43	0.49
2:C:261:TYR:HA	2:C:264:GLU:OE1	2.11	0.49
2:C:677:PHE:O	2:C:695:ARG:CZ	2.60	0.49
2:A:43:LEU:HD22	2:A:110:LEU:HD21	1.94	0.49
2:A:72:ASP:HA	2:A:75:HIS:HD2	1.75	0.49
2:A:368:TYR:HA	2:A:371:LYS:CE	2.40	0.49
2:C:198:GLN:NE2	2:C:257:LEU:HD21	2.27	0.49
2:C:595:GLY:HA2	2:C:599:HIS:CD2	2.48	0.49
2:C:276:LEU:HD11	2:C:309:PHE:CE2	2.48	0.49
2:A:400:ARG:O	2:A:404:ILE:HD12	2.13	0.49
2:A:578:GLU:O	2:A:581:LEU:HB2	2.12	0.49

Continued on next page...

Continued from previous page...

Atom-1	Atom-2	Interatomic distance (Å)	Clash overlap (Å)
2:A:681:ARG:HD3	2:A:687:GLY:O	2.13	0.49
2:C:14:LYS:O	2:C:17:ASP:OD1	2.31	0.49
2:C:604:TYR:HB2	2:C:641:PHE:CE1	2.48	0.49
2:A:127:LYS:HG2	2:A:131:LYS:HE3	1.95	0.49
2:A:217:ARG:CZ	2:A:217:ARG:HB3	2.43	0.49
2:C:61:LYS:O	2:C:64:TYR:HB3	2.13	0.49
2:C:196:ARG:NH1	2:C:200:GLN:HG3	2.27	0.49
2:C:553:TRP:CE2	2:C:554:GLU:HG3	2.47	0.49
2:A:103:ASN:HB3	2:A:106:PRO:HD2	1.94	0.49
2:A:525:ILE:HD12	2:A:525:ILE:H	1.78	0.49
2:A:765:GLN:C	2:A:769:HIS:CE1	2.86	0.49
2:C:713:PRO:O	2:C:717:VAL:HG22	2.13	0.49
2:A:259:GLN:O	2:A:262:LEU:HG	2.13	0.49
1:B:112:ILE:CD1	1:B:130:ILE:HB	2.43	0.48
2:A:562:SER:O	2:A:566:GLN:OE1	2.31	0.48
2:A:741:GLN:O	2:A:745:GLN:HG3	2.13	0.48
2:C:312:ARG:NH2	2:C:315:GLY:HA3	2.25	0.48
2:C:422:HIS:HD2	2:C:463:LEU:HD11	1.78	0.48
2:C:441:LEU:HD11	2:C:494:PHE:CE1	2.49	0.48
2:C:463:LEU:O	2:C:467:LEU:HD23	2.13	0.48
2:C:558:GLN:OE1	2:C:602:VAL:HG21	2.13	0.48
2:A:700:LEU:HD21	2:A:727:TYR:CE1	2.48	0.48
2:C:376:THR:O	2:C:380:PHE:HD2	1.96	0.48
2:C:455:ASP:OD1	2:C:455:ASP:N	2.44	0.48
2:C:764:GLU:HG3	2:C:765:GLN:N	2.28	0.48
2:A:272:ASP:O	2:A:276:LEU:HD23	2.12	0.48
2:C:161:LEU:HB3	2:C:179:SER:OG	2.13	0.48
2:A:331:GLN:O	2:A:334:THR:OG1	2.26	0.48
2:A:422:HIS:HB3	2:A:423:PRO:HD3	1.95	0.48
2:A:553:TRP:CE2	2:A:554:GLU:HG3	2.48	0.48
2:A:599:HIS:NE2	2:A:600:GLU:HG2	2.28	0.48
2:A:736:ASP:OD1	2:A:737:ALA:N	2.47	0.48
2:A:114:VAL:O	2:A:118:TYR:HD1	1.96	0.48
2:A:392:SER:O	2:A:396:LYS:HE2	2.13	0.48
2:C:577:ALA:O	2:C:580:PRO:HD2	2.14	0.48
2:A:104:ILE:HG13	2:A:105:ILE:N	2.28	0.48
2:A:373:LEU:O	2:A:376:THR:OG1	2.30	0.48
2:A:715:LEU:HA	2:A:718:GLN:CG	2.43	0.48
2:C:12:GLN:NE2	2:C:15:LEU:HG	2.29	0.48
1:B:37:THR:CG2	1:B:112:ILE:HG22	2.43	0.48
1:D:37:THR:CG2	1:D:112:ILE:HG22	2.43	0.48

Continued on next page...

Continued from previous page...

Atom-1	Atom-2	Interatomic distance (Å)	Clash overlap (Å)
2:A:403:LYS:NZ	2:A:443:ASN:OD1	2.46	0.48
2:A:723:ILE:HG22	2:A:727:TYR:HE1	1.79	0.48
2:A:726:ARG:HG2	2:A:726:ARG:HH11	1.79	0.48
2:C:78:GLU:O	2:C:82:THR:OG1	2.26	0.48
2:C:351:GLN:HA	2:C:354:LEU:HD12	1.95	0.48
2:C:379:ILE:HA	2:C:382:LYS:NZ	2.29	0.48
2:C:723:ILE:O	2:C:727:TYR:CD2	2.66	0.48
1:D:22:PHE:CE1	1:D:167:LEU:HB2	2.48	0.48
1:D:104:ARG:CB	2:C:769:HIS:CE1	2.96	0.48
2:A:193:LEU:HA	2:A:196:ARG:NE	2.29	0.48
2:A:660:LEU:C	2:A:666:GLN:HE21	2.17	0.48
2:C:365:ARG:HD2	2:C:368:TYR:CE1	2.49	0.48
2:C:411:ASN:ND2	2:C:413:LEU:HB2	2.28	0.48
2:C:568:ILE:O	2:C:572:ILE:HG13	2.13	0.48
1:D:112:ILE:CD1	1:D:130:ILE:HB	2.42	0.48
2:A:16:LEU:CD2	2:A:62:SER:HB3	2.44	0.48
2:A:697:MET:HB3	2:A:701:LYS:HZ3	1.79	0.48
2:A:721:ILE:HD11	2:A:766:ILE:HG23	1.95	0.48
2:C:352:VAL:HG13	2:C:404:ILE:CD1	2.44	0.48
2:C:386:GLU:OE2	2:C:387:HIS:HB2	2.13	0.48
2:C:451:ILE:HA	2:C:497:LEU:HD13	1.96	0.48
2:A:288:GLU:OE1	2:A:288:GLU:N	2.41	0.48
2:A:552:LYS:HA	2:A:555:LYS:CE	2.43	0.48
2:A:556:LYS:O	2:A:559:LYS:HG2	2.13	0.48
2:A:602:VAL:HA	2:A:605:GLU:CD	2.34	0.48
2:A:650:ARG:NH2	2:A:651:THR:HG23	2.28	0.48
2:A:700:LEU:O	2:A:704:LEU:HG	2.13	0.48
2:C:61:LYS:O	2:C:65:GLU:OE1	2.31	0.48
2:C:191:ASN:OD1	2:C:192:LYS:N	2.47	0.48
2:C:352:VAL:HG11	2:C:400:ARG:NH1	2.29	0.48
2:C:647:GLU:HB3	2:C:648:PRO:HD3	1.96	0.48
1:B:139:TYR:HH	2:A:586:GLN:NE2	2.08	0.47
2:A:147:LEU:HB3	2:A:219:LEU:HD23	1.96	0.47
2:A:188:ALA:O	2:A:192:LYS:HG2	2.13	0.47
2:A:193:LEU:HD12	2:A:194:TRP:N	2.29	0.47
2:A:550:ASP:OD1	2:A:551:ASP:N	2.46	0.47
2:A:566:GLN:HG2	2:A:567:THR:N	2.29	0.47
2:C:198:GLN:HG2	2:C:213:ARG:NH1	2.29	0.47
2:C:255:ASP:OD1	2:C:256:ALA:N	2.44	0.47
2:C:441:LEU:HD12	2:C:444:VAL:HB	1.95	0.47
2:C:485:ALA:HA	2:C:488:GLN:OE1	2.14	0.47

Continued on next page...

Continued from previous page...

Atom-1	Atom-2	Interatomic distance (Å)	Clash overlap (Å)
2:C:660:LEU:HD11	2:C:666:GLN:CA	2.44	0.47
2:C:660:LEU:HD11	2:C:666:GLN:CB	2.44	0.47
2:A:50:LEU:HA	2:A:53:LEU:HD23	1.97	0.47
2:A:141:GLN:O	2:A:196:ARG:NH2	2.47	0.47
2:A:376:THR:HA	2:A:379:ILE:HD12	1.96	0.47
2:C:335:VAL:O	2:C:339:ARG:HG2	2.15	0.47
2:C:464:VAL:O	2:C:468:ILE:HG12	2.14	0.47
2:C:636:GLU:HG3	2:C:637:ARG:CD	2.38	0.47
2:C:685:LYS:HZ1	2:C:689:GLU:C	2.14	0.47
1:B:22:PHE:CE1	1:B:167:LEU:HB2	2.48	0.47
2:A:580:PRO:O	2:A:584:PHE:CD2	2.66	0.47
2:A:739:THR:HG1	2:A:742:VAL:HG23	1.78	0.47
2:C:212:GLU:HA	2:C:215:GLU:OE1	2.14	0.47
2:C:593:GLU:OE2	2:C:594:ILE:HG13	2.14	0.47
2:A:416:LEU:HD22	2:A:456:GLN:NE2	2.28	0.47
2:A:497:LEU:O	2:A:500:SER:OG	2.32	0.47
2:A:507:TYR:HE2	2:A:559:LYS:HG3	1.80	0.47
2:C:174:GLY:HA2	2:C:178:ASP:OD2	2.15	0.47
2:C:645:ASN:O	2:C:648:PRO:HD2	2.14	0.47
2:C:663:LYS:CE	2:C:709:GLN:HB2	2.44	0.47
1:B:70:PRO:HG2	1:B:73:LYS:HE3	1.95	0.47
2:A:12:GLN:NE2	2:A:15:LEU:HD12	2.29	0.47
2:A:110:LEU:O	2:A:114:VAL:HG12	2.13	0.47
2:C:373:LEU:HB3	2:C:420:HIS:CD2	2.42	0.47
2:C:495:ILE:HD13	2:C:531:PRO:HB2	1.96	0.47
2:C:750:ILE:HG22	2:C:751:ARG:NH2	2.29	0.47
2:A:164:GLU:HB2	2:A:231:GLU:CB	2.45	0.47
2:C:108:LEU:HD12	2:C:109:TYR:N	2.30	0.47
2:C:463:LEU:HD23	2:C:463:LEU:HA	1.66	0.47
2:C:495:ILE:HG22	2:C:499:ARG:NH1	2.30	0.47
2:A:131:LYS:O	2:A:135:GLU:HG3	2.15	0.47
2:A:192:LYS:HE2	2:A:192:LYS:HA	1.96	0.47
2:A:235:VAL:HG13	2:A:239:LYS:NZ	2.30	0.47
2:A:367:ASP:O	2:A:371:LYS:HG3	2.14	0.47
2:A:403:LYS:HB3	2:A:407:ASP:OD2	2.15	0.47
2:A:494:PHE:O	2:A:497:LEU:HG	2.15	0.47
2:A:733:LYS:HE3	2:A:735:ASN:HD21	1.79	0.47
2:C:187:PHE:CD1	2:C:223:ASN:ND2	2.82	0.47
2:C:260:GLU:O	2:C:264:GLU:OE1	2.33	0.47
2:C:270:PHE:HB2	2:C:275:HIS:NE2	2.30	0.47
2:C:354:LEU:HA	2:C:357:LEU:CD2	2.45	0.47

Continued on next page...

Continued from previous page...

Atom-1	Atom-2	Interatomic distance (Å)	Clash overlap (Å)
2:C:451:ILE:CD1	2:C:501:GLU:HG2	2.42	0.47
2:C:537:TYR:HE2	2:C:586:GLN:OE1	1.98	0.47
2:C:565:HIS:HD2	2:C:606:PHE:CE1	2.32	0.47
1:D:60:ARG:HB2	1:D:69:TYR:HB2	1.96	0.47
1:D:119:PHE:CE1	1:D:164:VAL:HB	2.50	0.47
2:A:25:VAL:O	2:A:28:PHE:HB2	2.14	0.47
2:A:388:ILE:HG22	2:A:392:SER:HB3	1.95	0.47
2:A:409:TYR:HB3	2:A:411:ASN:OD1	2.14	0.47
2:A:604:TYR:HA	2:A:607:MET:HG2	1.95	0.47
2:A:724:LEU:HD11	2:A:747:ILE:HG22	1.96	0.47
2:C:280:ASN:OD1	2:C:331:GLN:NE2	2.48	0.47
2:C:411:ASN:HD21	2:C:413:LEU:HB2	1.80	0.47
2:C:762:GLU:O	2:C:765:GLN:N	2.48	0.47
2:A:430:TYR:CZ	2:A:472:PRO:HA	2.50	0.47
2:A:455:ASP:HA	2:A:458:ASP:OD2	2.15	0.47
2:A:532:LEU:O	2:A:535:ALA:HB3	2.14	0.47
2:A:576:LEU:HD11	2:A:578:GLU:OE2	2.15	0.47
2:A:604:TYR:O	2:A:607:MET:HG2	2.14	0.47
2:C:196:ARG:HD2	2:C:196:ARG:HA	1.65	0.47
2:C:411:ASN:HA	2:C:447:TYR:CE2	2.50	0.47
2:C:620:ASP:H	2:C:623:ALA:HB3	1.80	0.47
2:C:627:ALA:O	2:C:631:ILE:HG13	2.15	0.47
2:C:725:ASN:HB3	2:C:729:TYR:CZ	2.50	0.47
1:D:155:ILE:HG13	1:D:160:VAL:HG23	1.97	0.47
2:A:495:ILE:HA	2:A:498:LEU:CD2	2.45	0.47
2:A:621:SER:O	2:A:624:GLN:HB2	2.15	0.47
2:C:643:GLU:O	2:C:647:GLU:CB	2.63	0.47
2:A:414:THR:HA	2:A:417:LYS:CE	2.44	0.46
2:A:490:LEU:O	2:A:494:PHE:CD2	2.68	0.46
2:C:305:ARG:O	2:C:308:LEU:HG	2.16	0.46
2:C:720:PHE:O	2:C:724:LEU:HD23	2.15	0.46
2:A:127:LYS:HG2	2:A:131:LYS:CE	2.46	0.46
2:A:164:GLU:HG3	2:A:232:GLY:CA	2.42	0.46
2:A:270:PHE:O	2:A:305:ARG:NH2	2.48	0.46
2:A:308:LEU:HD13	2:A:312:ARG:HH12	1.79	0.46
2:A:380:PHE:HB3	2:A:427:TYR:OH	2.15	0.46
2:C:29:GLN:HB2	2:C:32:ARG:NH2	2.26	0.46
2:C:40:MET:H	2:C:40:MET:HE3	1.79	0.46
2:C:276:LEU:HA	2:C:279:LEU:HG	1.96	0.46
2:C:357:LEU:HD12	2:C:358:ALA:N	2.30	0.46
2:C:695:ARG:O	2:C:698:GLU:HG2	2.15	0.46

Continued on next page...

Continued from previous page...

Atom-1	Atom-2	Interatomic distance (Å)	Clash overlap (Å)
1:B:155:ILE:HG13	1:B:160:VAL:HG23	1.96	0.46
2:A:16:LEU:HD22	2:A:62:SER:HB3	1.97	0.46
2:A:127:LYS:HB2	2:A:173:THR:HB	1.98	0.46
2:A:372:VAL:O	2:A:376:THR:HG23	2.15	0.46
2:A:422:HIS:NE2	2:A:466:THR:HG21	2.31	0.46
2:A:730:PHE:CB	2:A:735:ASN:HD22	2.26	0.46
2:C:26:GLN:CB	2:C:49:MET:HB2	2.45	0.46
2:C:29:GLN:HG3	2:C:45:HIS:CD2	2.50	0.46
2:C:262:LEU:HA	2:C:262:LEU:HD23	1.68	0.46
2:C:562:SER:O	2:C:566:GLN:OE1	2.33	0.46
2:C:563:PHE:HA	2:C:566:GLN:CD	2.36	0.46
2:C:751:ARG:NH2	2:C:754:LEU:HD22	2.27	0.46
1:B:141:ALA:HB2	2:A:586:GLN:OE1	2.15	0.46
2:A:464:VAL:O	2:A:468:ILE:HG12	2.16	0.46
2:C:514:ARG:HH12	2:C:566:GLN:CG	2.27	0.46
2:C:566:GLN:HG2	2:C:567:THR:N	2.31	0.46
2:A:130:LEU:HD12	2:A:131:LYS:N	2.30	0.46
2:A:508:LEU:O	2:A:512:THR:HG23	2.16	0.46
2:A:556:LYS:O	2:A:560:ILE:HG23	2.16	0.46
2:A:765:GLN:O	2:A:769:HIS:ND1	2.48	0.46
2:C:450:GLU:N	2:C:450:GLU:OE1	2.48	0.46
2:C:457:VAL:HA	2:C:460:ILE:HG12	1.96	0.46
2:C:770:PHE:CZ	2:C:774:LEU:HD11	2.51	0.46
1:B:60:ARG:HB2	1:B:69:TYR:HB2	1.97	0.46
1:B:119:PHE:CE1	1:B:164:VAL:HB	2.50	0.46
2:A:461:MET:O	2:A:516:HIS:NE2	2.44	0.46
2:A:531:PRO:HA	2:A:534:PHE:CD2	2.42	0.46
2:C:403:LYS:HD3	2:C:439:TYR:CE1	2.50	0.46
2:C:441:LEU:HD21	2:C:490:LEU:HB3	1.98	0.46
1:B:91:ILE:N	1:B:91:ILE:HD12	2.31	0.46
2:A:415:VAL:HA	2:A:418:LEU:HD12	1.98	0.46
2:A:422:HIS:HA	2:A:425:PHE:CD2	2.50	0.46
2:A:563:PHE:HA	2:A:566:GLN:CD	2.36	0.46
2:C:61:LYS:HD2	2:C:61:LYS:H	1.81	0.46
2:C:470:ASP:OD1	2:C:471:GLN:N	2.49	0.46
2:C:539:LEU:HD12	2:C:542:ARG:HB3	1.97	0.46
2:C:694:LYS:HG3	2:C:695:ARG:N	2.31	0.46
2:A:180:MET:SD	2:A:241:ILE:HD12	2.56	0.46
2:A:482:GLU:HB3	2:A:486:ASP:OD2	2.16	0.46
2:C:294:ASN:OD1	2:C:296:LYS:HB3	2.16	0.46
2:C:402:LEU:HD12	2:C:428:PHE:HZ	1.81	0.46

Continued on next page...

Continued from previous page...

Atom-1	Atom-2	Interatomic distance (Å)	Clash overlap (Å)
2:C:736:ASP:OD1	2:C:737:ALA:N	2.49	0.46
1:D:91:ILE:HD12	1:D:91:ILE:N	2.31	0.46
2:A:352:VAL:HG11	2:A:400:ARG:NH1	2.31	0.46
2:C:451:ILE:HB	2:C:497:LEU:O	2.15	0.46
2:C:499:ARG:HG3	2:C:499:ARG:NH1	2.31	0.46
2:C:502:ASP:OD1	2:C:502:ASP:N	2.49	0.46
2:C:660:LEU:HD11	2:C:666:GLN:HB2	1.98	0.46
1:B:37:THR:OG1	1:B:38:GLY:N	2.49	0.46
2:A:227:LEU:HA	2:A:230:LEU:HD12	1.98	0.46
2:A:271:PRO:HB2	2:A:273:GLU:OE1	2.15	0.46
2:A:382:LYS:HB3	2:A:382:LYS:HE3	1.64	0.46
2:A:474:GLN:HE22	2:A:477:GLU:HG2	1.81	0.46
2:A:668:ARG:O	2:A:671:SER:OG	2.26	0.46
2:A:726:ARG:HA	2:A:726:ARG:NE	2.31	0.46
2:A:777:LEU:C	2:A:779:LEU:H	2.19	0.46
2:C:550:ASP:OD1	2:C:551:ASP:N	2.49	0.46
2:C:577:ALA:HB3	2:C:578:GLU:OE1	2.15	0.46
2:C:596:PHE:HD2	2:C:597:GLU:O	1.99	0.46
2:A:233:VAL:HG12	2:A:274:PHE:HE2	1.80	0.45
2:A:456:GLN:NE2	2:A:459:SER:HB2	2.31	0.45
2:A:756:ASN:O	2:A:757:LEU:HD23	2.16	0.45
2:C:17:ASP:O	2:C:21:GLN:HG3	2.16	0.45
2:C:457:VAL:O	2:C:461:MET:HG3	2.15	0.45
2:C:761:GLU:O	2:C:765:GLN:HG3	2.16	0.45
1:D:143:GLU:HG3	1:D:146:ILE:HD13	1.99	0.45
2:A:14:LYS:O	2:A:17:ASP:N	2.49	0.45
2:A:46:ALA:HA	2:A:49:MET:HE2	1.98	0.45
2:A:413:LEU:HG	2:A:414:THR:N	2.30	0.45
2:A:625:LEU:HD12	2:A:626:ALA:N	2.31	0.45
2:A:728:ILE:O	2:A:732:GLU:HG3	2.16	0.45
2:C:127:LYS:HB2	2:C:173:THR:C	2.37	0.45
1:B:150:PHE:CE2	1:B:152:LEU:HD22	2.50	0.45
1:D:63:PHE:CE1	2:C:582:ARG:HD3	2.51	0.45
2:A:568:ILE:HD12	2:A:584:PHE:HE1	1.81	0.45
2:C:441:LEU:HD12	2:C:441:LEU:HA	1.70	0.45
2:C:751:ARG:HG2	2:C:751:ARG:HH11	1.81	0.45
2:A:246:ILE:HA	2:A:249:GLN:NE2	2.30	0.45
2:A:472:PRO:HB3	2:A:476:VAL:HB	1.98	0.45
2:A:626:ALA:O	2:A:629:THR:HG22	2.16	0.45
2:C:422:HIS:O	2:C:425:PHE:HD2	1.99	0.45
2:C:430:TYR:CB	2:C:473:ASP:HA	2.46	0.45

Continued on next page...

Continued from previous page...

Atom-1	Atom-2	Interatomic distance (Å)	Clash overlap (Å)
2:C:460:ILE:HG13	2:C:461:MET:N	2.31	0.45
1:B:59:VAL:HG13	1:B:84:LEU:HD13	1.99	0.45
1:B:81:LYS:HD3	1:B:107:ASP:O	2.16	0.45
1:D:59:VAL:HG13	1:D:84:LEU:HD13	1.99	0.45
2:A:530:PRO:O	2:A:533:VAL:HB	2.17	0.45
2:A:705:LYS:NZ	2:A:706:ILE:HD11	2.31	0.45
2:A:777:LEU:HD13	2:A:779:LEU:HD12	1.98	0.45
2:C:544:LYS:NZ	2:C:593:GLU:O	2.48	0.45
2:C:700:LEU:O	2:C:704:LEU:HG	2.17	0.45
2:C:712:ASP:H	2:C:716:GLN:CG	2.29	0.45
2:A:177:SER:HA	2:A:180:MET:HG2	1.97	0.45
2:C:324:LEU:HD22	2:C:328:PHE:CE2	2.51	0.45
2:C:359:MET:CE	2:C:405:PRO:HA	2.46	0.45
1:D:81:LYS:HD3	1:D:107:ASP:O	2.16	0.45
2:A:142:HIS:CG	2:A:145:ARG:NH1	2.84	0.45
2:A:216:LEU:HD22	2:A:219:LEU:HD22	1.99	0.45
2:A:412:ILE:HG21	2:A:444:VAL:HG13	1.99	0.45
2:A:568:ILE:HG13	2:A:569:SER:N	2.32	0.45
2:A:699:CYS:HA	2:A:702:LYS:HE2	1.99	0.45
2:C:47:SER:O	2:C:50:LEU:HG	2.16	0.45
1:B:18:LEU:H	1:B:18:LEU:CD1	2.29	0.45
1:D:37:THR:OG1	1:D:38:GLY:N	2.50	0.45
2:A:116:VAL:HG22	2:A:120:LYS:NZ	2.32	0.45
2:A:202:HIS:HD2	2:A:204:ARG:H	1.64	0.45
2:C:243:LEU:HA	2:C:246:ILE:CG1	2.42	0.45
2:C:372:VAL:O	2:C:376:THR:HG23	2.17	0.45
2:C:433:ARG:HA	2:C:436:MET:HG2	1.98	0.45
1:D:2:LEU:CD1	1:D:152:LEU:HD12	2.47	0.44
2:A:762:GLU:H	2:A:762:GLU:HG3	1.60	0.44
2:C:403:LYS:HA	2:C:406:VAL:HB	1.98	0.44
2:C:461:MET:HE3	2:C:513:ALA:HA	1.99	0.44
2:C:776:HIS:ND1	2:C:777:LEU:HD22	2.32	0.44
1:D:128:PHE:CE2	1:D:130:ILE:HD11	2.53	0.44
2:A:26:GLN:CB	2:A:49:MET:SD	3.05	0.44
2:C:196:ARG:HH12	2:C:199:HIS:C	2.21	0.44
2:C:203:SER:O	2:C:206:ARG:HG2	2.17	0.44
2:C:208:LYS:HD3	2:C:212:GLU:OE2	2.18	0.44
2:C:480:ASP:OD1	2:C:480:ASP:N	2.48	0.44
2:C:724:LEU:HD21	2:C:746:LEU:HD13	1.99	0.44
2:C:412:ILE:HG21	2:C:444:VAL:HG22	1.99	0.44
2:C:603:ALA:O	2:C:607:MET:HG2	2.17	0.44

Continued on next page...

Continued from previous page...

Atom-1	Atom-2	Interatomic distance (Å)	Clash overlap (Å)
1:B:2:LEU:CD1	1:B:152:LEU:HD12	2.47	0.44
1:B:90:VAL:O	1:B:93:TRP:HA	2.18	0.44
2:A:227:LEU:O	2:A:233:VAL:HG21	2.18	0.44
2:A:649:LEU:HD12	2:A:649:LEU:N	2.33	0.44
2:C:364:ASP:OD1	2:C:365:ARG:N	2.49	0.44
1:B:90:VAL:C	1:B:91:ILE:HD12	2.38	0.44
1:D:150:PHE:O	1:D:151:VAL:HG23	2.18	0.44
2:A:104:ILE:CA	2:A:107:ARG:HH11	2.30	0.44
2:A:241:ILE:HG13	2:A:242:VAL:HG23	2.00	0.44
2:A:365:ARG:HD3	2:A:368:TYR:CD1	2.53	0.44
2:A:374:GLU:OE1	2:A:374:GLU:N	2.50	0.44
2:A:396:LYS:HD3	2:A:396:LYS:N	2.32	0.44
2:A:514:ARG:NE	2:A:567:THR:HG22	2.33	0.44
2:C:129:ILE:O	2:C:133:LEU:HG	2.18	0.44
2:C:373:LEU:HD11	2:C:418:LEU:HD23	1.99	0.44
2:C:692:GLY:H	2:C:695:ARG:HH12	1.64	0.44
1:B:143:GLU:HG3	1:B:146:ILE:HD13	1.99	0.44
2:A:388:ILE:CG2	2:A:395:SER:HB2	2.48	0.44
2:C:137:CYS:O	2:C:140:VAL:HG23	2.18	0.44
2:C:413:LEU:O	2:C:417:LYS:NZ	2.23	0.44
2:C:157:THR:HG21	2:C:182:PHE:CZ	2.53	0.44
2:C:600:GLU:OE2	2:C:641:PHE:HA	2.17	0.44
2:A:84:GLU:HA	2:A:87:LYS:HD2	2.00	0.44
2:A:127:LYS:NZ	2:A:174:GLY:H	2.16	0.44
2:A:359:MET:HE1	2:A:408:THR:HB	1.99	0.44
2:A:650:ARG:HH22	2:A:695:ARG:HH22	1.65	0.44
2:A:729:TYR:CZ	2:A:733:LYS:HD3	2.52	0.44
2:C:253:CYS:O	2:C:254:ARG:HD3	2.17	0.44
2:C:537:TYR:CE2	2:C:586:GLN:HB2	2.53	0.44
1:D:11:ILE:O	1:D:41:CYS:HB2	2.18	0.44
2:A:529:LEU:O	2:A:533:VAL:HG23	2.17	0.44
2:A:568:ILE:O	2:A:572:ILE:HG13	2.18	0.44
2:A:710:CYS:HB2	2:A:716:GLN:CG	2.46	0.44
1:B:30:LYS:O	1:B:32:GLN:NE2	2.51	0.43
1:B:66:ASN:OD1	1:B:68:ASN:HB2	2.18	0.43
1:B:141:ALA:HB1	2:A:589:LEU:CD1	2.48	0.43
2:A:81:LEU:CD2	2:A:117:VAL:HG21	2.47	0.43
2:A:495:ILE:HD11	2:A:532:LEU:HD23	1.99	0.43
2:C:226:ARG:HA	2:C:229:GLN:OE1	2.18	0.43
2:C:561:PHE:HE2	2:C:596:PHE:CE1	2.36	0.43
1:D:16:ASN:CB	2:C:493:ARG:NH2	2.80	0.43

Continued on next page...

Continued from previous page...

Atom-1	Atom-2	Interatomic distance (Å)	Clash overlap (Å)
2:A:83:ASP:O	2:A:87:LYS:HG3	2.17	0.43
2:A:303:ILE:HG23	2:A:357:LEU:CD2	2.44	0.43
2:A:313:GLU:HG2	2:A:314:ASP:H	1.82	0.43
2:A:404:ILE:O	2:A:408:THR:CB	2.66	0.43
2:C:158:ARG:HG2	2:C:159:ASN:N	2.32	0.43
2:C:289:LEU:HD23	2:C:289:LEU:HA	1.70	0.43
2:C:555:LYS:HD3	2:C:555:LYS:N	2.33	0.43
1:B:150:PHE:O	1:B:151:VAL:HG23	2.18	0.43
1:D:104:ARG:CD	2:C:769:HIS:CE1	3.01	0.43
2:A:157:THR:HB	2:A:161:LEU:HG	1.99	0.43
2:A:194:TRP:O	2:A:197:MET:HB3	2.18	0.43
2:A:270:PHE:O	2:A:305:ARG:CZ	2.65	0.43
2:A:550:ASP:CG	2:A:553:TRP:HB3	2.38	0.43
2:C:32:ARG:O	2:C:35:ASP:OD1	2.36	0.43
2:C:152:TYR:O	2:C:155:GLN:HG3	2.18	0.43
2:C:160:ILE:H	2:C:160:ILE:HD12	1.83	0.43
2:C:555:LYS:O	2:C:559:LYS:NZ	2.48	0.43
2:C:565:HIS:CD2	2:C:606:PHE:CE1	3.06	0.43
2:C:658:SER:HG	2:C:659:LYS:HE2	1.83	0.43
1:D:90:VAL:C	1:D:91:ILE:HD12	2.38	0.43
2:A:105:ILE:O	2:A:109:TYR:HD2	2.02	0.43
2:A:650:ARG:HB2	2:A:650:ARG:NH1	2.34	0.43
2:A:665:ASP:HA	2:A:668:ARG:CD	2.49	0.43
2:C:40:MET:H	2:C:40:MET:CE	2.31	0.43
2:C:652:GLN:O	2:C:655:LEU:HG	2.18	0.43
1:B:11:ILE:O	1:B:41:CYS:HB2	2.18	0.43
1:B:106:PHE:O	1:B:107:ASP:HB3	2.19	0.43
1:D:66:ASN:OD1	1:D:68:ASN:HB2	2.18	0.43
2:A:601:THR:O	2:A:605:GLU:OE1	2.37	0.43
2:C:21:GLN:O	2:C:25:VAL:HG23	2.18	0.43
2:C:234:ASN:ND2	2:C:237:ARG:HD2	2.33	0.43
2:C:290:HIS:HB3	2:C:293:VAL:HG23	2.00	0.43
2:C:554:GLU:HB2	2:C:555:LYS:NZ	2.32	0.43
2:C:697:MET:O	2:C:700:LEU:HG	2.19	0.43
2:A:394:VAL:O	2:A:398:LEU:HG	2.18	0.43
2:A:693:GLY:O	2:A:697:MET:HG2	2.18	0.43
2:A:765:GLN:HA	2:A:768:LYS:HE2	1.99	0.43
2:C:207:GLU:HA	2:C:210:GLU:HG3	2.00	0.43
2:A:245:GLY:O	2:A:249:GLN:OE1	2.37	0.43
2:A:511:ASN:HB3	2:A:515:LYS:NZ	2.34	0.43
2:A:521:GLY:HA3	2:A:524:ARG:HD2	2.00	0.43

Continued on next page...

Continued from previous page...

Atom-1	Atom-2	Interatomic distance (Å)	Clash overlap (Å)
2:A:746:LEU:HD13	2:A:746:LEU:HA	1.81	0.43
2:C:247:LEU:O	2:C:251:VAL:HG12	2.18	0.43
2:C:411:ASN:HB3	2:C:414:THR:HG23	2.00	0.43
1:D:21:LYS:HZ2	1:D:170:ASP:C	2.21	0.43
1:D:30:LYS:O	1:D:32:GLN:NE2	2.51	0.43
2:A:206:ARG:NH1	2:A:209:ARG:HH21	2.16	0.43
2:A:514:ARG:NH1	2:A:566:GLN:HE21	2.15	0.43
2:A:681:ARG:HA	2:A:689:GLU:HA	2.01	0.43
2:C:18:GLU:HA	2:C:21:GLN:OE1	2.18	0.43
2:C:462:ASN:O	2:C:466:THR:HG23	2.19	0.43
2:C:514:ARG:NE	2:C:567:THR:HG22	2.34	0.43
2:C:542:ARG:NH1	2:C:546:ASN:OD1	2.50	0.43
2:C:550:ASP:OD1	2:C:553:TRP:N	2.51	0.43
2:C:585:LEU:HA	2:C:585:LEU:HD23	1.70	0.43
2:C:611:PHE:O	2:C:615:GLU:OE1	2.37	0.43
2:C:720:PHE:HA	2:C:723:ILE:HG22	2.00	0.43
2:A:12:GLN:OE1	2:A:12:GLN:N	2.51	0.43
2:A:22:ALA:O	2:A:26:GLN:HG2	2.19	0.43
2:A:322:ILE:HG13	2:A:322:ILE:O	2.19	0.43
2:A:456:GLN:O	2:A:460:ILE:HG13	2.18	0.43
2:C:142:HIS:CG	2:C:145:ARG:NH1	2.87	0.43
2:C:272:ASP:HB2	2:C:309:PHE:CE1	2.53	0.43
2:C:432:SER:O	2:C:436:MET:HG2	2.18	0.43
2:C:448:ASN:HB3	2:C:450:GLU:OE2	2.19	0.43
2:C:726:ARG:NH2	2:C:729:TYR:HB2	2.31	0.43
1:D:90:VAL:O	1:D:93:TRP:HA	2.18	0.43
2:A:73:GLU:HA	2:A:76:TYR:HD2	1.84	0.43
2:A:681:ARG:HG2	2:A:689:GLU:CA	2.45	0.43
2:C:719:LEU:HA	2:C:722:GLU:OE1	2.19	0.43
1:B:128:PHE:CE2	1:B:130:ILE:HD11	2.53	0.42
1:D:152:LEU:HD23	1:D:152:LEU:H	1.84	0.42
2:A:208:LYS:HD2	2:A:208:LYS:HA	1.76	0.42
2:A:442:SER:HA	2:A:445:LEU:HD12	2.00	0.42
2:A:461:MET:HE1	2:A:512:THR:C	2.39	0.42
2:C:91:VAL:HB	2:C:94:LEU:HD21	2.01	0.42
2:C:130:LEU:HD12	2:C:131:LYS:N	2.34	0.42
2:C:216:LEU:O	2:C:219:LEU:HB2	2.19	0.42
2:C:441:LEU:HD11	2:C:494:PHE:CZ	2.54	0.42
2:C:498:LEU:HD23	2:C:498:LEU:HA	1.71	0.42
2:A:203:SER:O	2:A:206:ARG:HG2	2.19	0.42
2:A:296:LYS:O	2:A:300:ILE:HG23	2.19	0.42

Continued on next page...

Continued from previous page...

Atom-1	Atom-2	Interatomic distance (Å)	Clash overlap (Å)
2:A:324:LEU:HD23	2:A:324:LEU:HA	1.85	0.42
2:A:452:VAL:HG12	2:A:457:VAL:HG23	2.01	0.42
2:A:690:LEU:HD12	2:A:692:GLY:N	2.34	0.42
2:A:765:GLN:HA	2:A:768:LYS:NZ	2.34	0.42
2:C:441:LEU:HD23	2:C:490:LEU:HD13	2.01	0.42
2:A:197:MET:HG2	2:A:200:GLN:NE2	2.33	0.42
2:A:235:VAL:HG23	2:A:274:PHE:HA	2.01	0.42
2:A:243:LEU:HD21	2:A:282:PHE:HB2	2.01	0.42
2:A:300:ILE:HG13	2:A:301:ALA:N	2.35	0.42
2:A:441:LEU:HD23	2:A:441:LEU:HA	1.86	0.42
2:A:602:VAL:HA	2:A:605:GLU:OE2	2.19	0.42
2:A:765:GLN:O	2:A:769:HIS:CE1	2.72	0.42
2:C:377:VAL:HG21	2:C:420:HIS:NE2	2.34	0.42
2:C:524:ARG:CA	2:C:526:ARG:HH11	2.32	0.42
2:C:571:LEU:CD2	2:C:580:PRO:HG3	2.49	0.42
2:C:608:SER:HA	2:C:611:PHE:HD2	1.82	0.42
2:C:620:ASP:OD1	2:C:621:SER:N	2.52	0.42
2:C:726:ARG:HA	2:C:729:TYR:HD2	1.79	0.42
2:A:132:ASP:O	2:A:136:MET:HG2	2.18	0.42
2:A:185:LEU:O	2:A:189:GLU:HG3	2.20	0.42
2:A:308:LEU:HB2	2:A:312:ARG:NH2	2.34	0.42
2:A:318:ILE:HG12	2:A:324:LEU:HD12	2.01	0.42
2:A:677:PHE:CB	2:A:696:VAL:HG22	2.47	0.42
2:C:171:GLU:HG3	2:C:172:THR:N	2.35	0.42
2:C:453:SER:O	2:C:457:VAL:HG23	2.19	0.42
2:C:467:LEU:HD13	2:C:467:LEU:HA	1.79	0.42
2:C:557:CYS:HB3	2:C:561:PHE:CE2	2.54	0.42
2:C:577:ALA:O	2:C:581:LEU:HG	2.19	0.42
2:C:725:ASN:C	2:C:729:TYR:CE2	2.93	0.42
2:A:142:HIS:HB3	2:A:145:ARG:HG2	2.02	0.42
2:A:197:MET:HE1	2:A:213:ARG:HG2	2.02	0.42
2:C:233:VAL:HG23	2:C:233:VAL:O	2.20	0.42
1:B:19:PRO:HG2	1:B:22:PHE:CG	2.55	0.42
2:A:338:SER:CB	2:A:339:ARG:HH21	2.33	0.42
2:C:14:LYS:O	2:C:15:LEU:C	2.57	0.42
2:C:450:GLU:HB3	2:C:451:ILE:H	1.70	0.42
2:A:453:SER:HB3	2:A:455:ASP:OD1	2.20	0.42
2:A:511:ASN:O	2:A:514:ARG:HB3	2.20	0.42
2:A:596:PHE:HD2	2:A:597:GLU:O	2.02	0.42
2:A:652:GLN:CG	2:C:661:LEU:HD23	2.50	0.42
2:C:24:LYS:HA	2:C:24:LYS:HE2	2.01	0.42

Continued on next page...

Continued from previous page...

Atom-1	Atom-2	Interatomic distance (Å)	Clash overlap (Å)
2:C:250:VAL:HG21	2:C:263:MET:HE3	2.02	0.42
2:C:642:SER:HB3	2:C:683:THR:OG1	2.19	0.42
2:C:645:ASN:C	2:C:648:PRO:HD2	2.40	0.42
2:A:24:LYS:O	2:A:28:PHE:CG	2.73	0.42
2:A:456:GLN:HE21	2:A:460:ILE:CG1	2.25	0.42
2:A:542:ARG:NH1	2:A:546:ASN:OD1	2.53	0.42
2:A:706:ILE:HD13	2:A:706:ILE:HA	1.83	0.42
2:A:743:LEU:HA	2:A:743:LEU:HD23	1.60	0.42
2:A:760:SER:HB2	2:A:762:GLU:OE2	2.20	0.42
2:C:419:LYS:HD3	2:C:419:LYS:N	2.34	0.42
2:C:460:ILE:O	2:C:464:VAL:HG23	2.20	0.42
2:C:543:TYR:CE2	2:C:556:LYS:HB3	2.54	0.42
2:C:729:TYR:CD1	2:C:729:TYR:N	2.82	0.42
1:D:22:PHE:CE2	1:D:150:PHE:HD1	2.38	0.42
2:A:12:GLN:CG	2:A:13:GLU:N	2.81	0.42
2:A:404:ILE:O	2:A:408:THR:HB	2.20	0.42
2:A:416:LEU:HD22	2:A:456:GLN:HE22	1.84	0.42
2:A:456:GLN:HE22	2:A:459:SER:HB2	1.85	0.42
2:A:483:ASP:O	2:A:486:ASP:N	2.49	0.42
2:C:94:LEU:HD23	2:C:97:LEU:HD21	2.02	0.42
2:C:171:GLU:HG3	2:C:172:THR:HG23	2.01	0.42
2:C:471:GLN:O	2:C:472:PRO:C	2.57	0.42
2:C:712:ASP:H	2:C:716:GLN:HG3	1.85	0.42
1:D:18:LEU:H	1:D:18:LEU:CD1	2.29	0.42
1:D:106:PHE:O	1:D:107:ASP:HB3	2.19	0.42
1:D:149:SER:HA	1:D:165:TYR:O	2.19	0.42
2:A:14:LYS:O	2:A:15:LEU:C	2.59	0.42
2:A:226:ARG:HH22	2:A:230:LEU:HD21	1.85	0.42
2:A:245:GLY:HA2	2:A:248:GLU:OE1	2.18	0.42
2:A:324:LEU:HD22	2:A:328:PHE:CZ	2.55	0.42
2:A:410:ASN:HA	2:A:447:TYR:CE2	2.55	0.42
2:A:564:ALA:O	2:A:568:ILE:HG23	2.20	0.42
2:A:643:GLU:OE1	2:A:682:ASN:HB3	2.20	0.42
2:A:647:GLU:HB3	2:A:648:PRO:HD3	2.02	0.42
2:C:234:ASN:OD1	2:C:237:ARG:N	2.42	0.42
2:C:375:THR:HA	2:C:378:GLU:CG	2.49	0.42
2:C:663:LYS:HZ3	2:C:706:ILE:HG23	1.84	0.42
1:B:21:LYS:HZ2	1:B:170:ASP:C	2.22	0.41
1:B:22:PHE:CE2	1:B:150:PHE:HD1	2.38	0.41
1:B:149:SER:HA	1:B:165:TYR:O	2.19	0.41
1:D:19:PRO:HG2	1:D:22:PHE:CG	2.55	0.41

Continued on next page...

Continued from previous page...

Atom-1	Atom-2	Interatomic distance (Å)	Clash overlap (Å)
2:A:193:LEU:CB	2:A:196:ARG:HH21	2.33	0.41
2:A:397:GLU:OE1	2:A:400:ARG:NH2	2.34	0.41
2:C:12:GLN:HG3	2:C:14:LYS:CE	2.49	0.41
2:C:380:PHE:HB3	2:C:427:TYR:CE1	2.55	0.41
2:C:388:ILE:O	2:C:429:ASP:HB2	2.20	0.41
2:C:422:HIS:HA	2:C:425:PHE:CD2	2.55	0.41
2:C:678:TRP:CH2	2:C:691:HIS:ND1	2.88	0.41
2:A:26:GLN:O	2:A:30:MET:CE	2.68	0.41
2:A:164:GLU:HB2	2:A:231:GLU:HB2	2.02	0.41
2:A:177:SER:HA	2:A:180:MET:CE	2.50	0.41
2:A:552:LYS:HG3	2:A:556:LYS:HE2	2.01	0.41
2:A:571:LEU:HD23	2:A:571:LEU:HA	1.82	0.41
2:A:614:TYR:O	2:A:618:ILE:HB	2.20	0.41
2:A:652:GLN:HG2	2:C:661:LEU:HD23	2.02	0.41
2:A:730:PHE:HD1	2:A:735:ASN:ND2	2.19	0.41
2:C:454:GLN:O	2:C:457:VAL:HB	2.20	0.41
2:A:14:LYS:HD3	2:A:14:LYS:N	2.35	0.41
2:A:118:TYR:O	2:A:122:PHE:N	2.45	0.41
2:A:514:ARG:HH12	2:A:566:GLN:NE2	2.18	0.41
2:C:34:LEU:HD11	2:C:77:LEU:HD13	2.01	0.41
2:C:54:ARG:HA	2:C:54:ARG:NE	2.35	0.41
2:C:169:ASP:HB2	2:C:172:THR:HG23	2.02	0.41
2:C:187:PHE:HA	2:C:190:MET:HG3	2.02	0.41
2:C:544:LYS:CD	2:C:594:ILE:HA	2.51	0.41
1:B:99:LEU:O	1:B:102:LEU:HB3	2.19	0.41
1:D:99:LEU:O	1:D:102:LEU:HB3	2.19	0.41
2:A:116:VAL:HG22	2:A:120:LYS:HZ2	1.85	0.41
2:A:202:HIS:CD2	2:A:204:ARG:HG3	2.54	0.41
2:A:387:HIS:HE1	2:A:433:ARG:CZ	2.34	0.41
2:C:198:GLN:CG	2:C:213:ARG:NH1	2.83	0.41
1:D:110:ILE:HG12	1:D:128:PHE:HB3	2.03	0.41
2:A:129:ILE:O	2:A:133:LEU:HG	2.21	0.41
2:A:247:LEU:HD21	2:A:282:PHE:CD1	2.55	0.41
2:A:645:ASN:C	2:A:648:PRO:HD2	2.40	0.41
2:C:82:THR:HG23	2:C:120:LYS:HD3	2.02	0.41
2:C:579:LEU:O	2:C:583:LEU:HG	2.21	0.41
2:C:693:GLY:O	2:C:697:MET:HG2	2.20	0.41
1:B:58:ILE:O	1:B:70:PRO:HD2	2.21	0.41
1:B:141:ALA:CB	2:A:589:LEU:CD1	2.98	0.41
1:D:5:VAL:HG12	1:D:132:PRO:HB3	2.03	0.41
2:A:29:GLN:OE1	2:A:45:HIS:CE1	2.73	0.41

Continued on next page...

Continued from previous page...

Atom-1	Atom-2	Interatomic distance (Å)	Clash overlap (Å)
2:C:420:HIS:C	2:C:423:PRO:HD2	2.40	0.41
2:C:605:GLU:CD	2:C:609:GLN:HE22	2.23	0.41
2:C:743:LEU:HD13	2:C:743:LEU:HA	1.94	0.41
2:A:213:ARG:NH2	2:A:257:LEU:HB2	2.36	0.41
2:A:453:SER:O	2:A:457:VAL:HG23	2.21	0.41
2:C:177:SER:HA	2:C:180:MET:HE2	2.02	0.41
2:C:177:SER:HA	2:C:180:MET:HE3	2.02	0.41
2:C:290:HIS:C	2:C:339:ARG:HH12	2.24	0.41
2:C:333:ALA:C	2:C:337:GLN:NE2	2.73	0.41
2:C:388:ILE:HG22	2:C:392:SER:HB3	2.01	0.41
2:C:724:LEU:HA	2:C:724:LEU:HD13	1.64	0.41
1:B:114:GLY:HA2	1:B:131:ASN:OD1	2.21	0.41
1:D:58:ILE:O	1:D:70:PRO:HD2	2.21	0.41
2:C:573:LYS:C	2:C:575:GLU:H	2.23	0.41
2:C:681:ARG:HB3	2:C:689:GLU:OE2	2.21	0.41
2:C:692:GLY:N	2:C:695:ARG:HH11	2.17	0.41
2:A:54:ARG:HA	2:A:54:ARG:NE	2.36	0.41
2:A:61:LYS:O	2:A:64:TYR:HB3	2.21	0.41
2:A:226:ARG:HA	2:A:229:GLN:OE1	2.21	0.41
2:A:262:LEU:O	2:A:266:ILE:HG13	2.20	0.41
2:A:403:LYS:NZ	2:A:440:VAL:HA	2.35	0.41
2:A:483:ASP:HB2	2:A:486:ASP:OD2	2.20	0.41
2:A:485:ALA:O	2:A:487:GLU:N	2.54	0.41
2:A:498:LEU:HD22	2:A:510:LEU:HD21	2.03	0.41
2:A:563:PHE:CE1	2:A:567:THR:HG21	2.55	0.41
2:A:596:PHE:CZ	2:A:599:HIS:HA	2.55	0.41
2:C:50:LEU:HD13	2:C:105:ILE:HG22	2.03	0.41
2:C:205:ASP:HB2	2:C:209:ARG:HH12	1.84	0.41
2:C:257:LEU:H	2:C:257:LEU:HD23	1.86	0.41
2:C:273:GLU:OE1	2:C:273:GLU:N	2.49	0.41
2:C:402:LEU:HA	2:C:402:LEU:HD23	1.80	0.41
2:C:469:GLN:NE2	2:C:520:GLY:O	2.54	0.41
2:C:559:LYS:HE3	2:C:559:LYS:HB3	1.82	0.41
1:B:11:ILE:HA	1:B:12:PRO:HA	1.88	0.41
1:B:152:LEU:HD23	1:B:152:LEU:H	1.85	0.41
1:D:114:GLY:HA2	1:D:131:ASN:OD1	2.21	0.41
2:A:354:LEU:HD23	2:A:354:LEU:HA	1.90	0.41
2:A:398:LEU:HD23	2:A:398:LEU:HA	1.82	0.41
2:A:457:VAL:O	2:A:461:MET:HG3	2.20	0.41
2:C:190:MET:CE	2:C:220:VAL:HG22	2.51	0.41
2:C:312:ARG:HH12	2:C:314:ASP:C	2.24	0.41

Continued on next page...

Continued from previous page...

Atom-1	Atom-2	Interatomic distance (Å)	Clash overlap (Å)
2:C:469:GLN:HE22	2:C:520:GLY:HA2	1.85	0.41
2:A:49:MET:O	2:A:52:GLU:HB2	2.21	0.40
2:A:208:LYS:HD3	2:A:211:ARG:NH2	2.36	0.40
2:A:362:TYR:CB	2:A:365:ARG:HH11	2.33	0.40
2:C:296:LYS:HG3	2:C:350:LEU:CD2	2.47	0.40
2:C:439:TYR:O	2:C:443:ASN:ND2	2.55	0.40
2:C:604:TYR:CE1	2:C:649:LEU:HD11	2.55	0.40
1:B:22:PHE:CD2	1:B:150:PHE:HD1	2.40	0.40
2:A:183:VAL:HG23	2:A:223:ASN:OD1	2.21	0.40
2:A:216:LEU:O	2:A:219:LEU:HB2	2.21	0.40
2:A:563:PHE:HA	2:A:566:GLN:HE22	1.86	0.40
2:A:717:VAL:HG23	2:A:718:GLN:N	2.36	0.40
2:A:733:LYS:HE2	2:A:733:LYS:HB3	1.82	0.40
2:C:270:PHE:HB2	2:C:275:HIS:CE1	2.57	0.40
2:C:589:LEU:HD23	2:C:589:LEU:HA	1.81	0.40
2:C:663:LYS:HE3	2:C:709:GLN:HB2	2.03	0.40
2:C:681:ARG:CZ	2:C:687:GLY:O	2.69	0.40
2:A:187:PHE:O	2:A:190:MET:HG3	2.20	0.40
2:A:296:LYS:HG2	2:A:350:LEU:HD21	2.03	0.40
2:A:402:LEU:HD22	2:A:421:PHE:CZ	2.57	0.40
2:A:555:LYS:HD3	2:A:555:LYS:N	2.36	0.40
2:A:607:MET:O	2:A:611:PHE:CD2	2.75	0.40
2:A:730:PHE:HE1	2:A:733:LYS:HZ1	1.62	0.40
2:A:760:SER:H	2:A:763:THR:HG22	1.86	0.40
2:C:150:ARG:O	2:C:153:LEU:HB3	2.21	0.40
2:C:368:TYR:HA	2:C:371:LYS:CE	2.48	0.40
2:C:583:LEU:HA	2:C:586:GLN:CG	2.50	0.40
2:C:606:PHE:HA	2:C:609:GLN:HE21	1.83	0.40
2:C:751:ARG:O	2:C:755:PRO:HD3	2.21	0.40
2:A:230:LEU:HD23	2:A:230:LEU:HA	1.89	0.40
2:A:290:HIS:O	2:A:293:VAL:HG12	2.21	0.40
2:A:507:TYR:CE2	2:A:559:LYS:HG3	2.56	0.40
2:A:761:GLU:HG2	2:A:762:GLU:N	2.37	0.40
2:C:124:GLN:N	2:C:172:THR:HG22	2.36	0.40
2:C:187:PHE:O	2:C:190:MET:HG3	2.20	0.40
2:C:425:PHE:O	2:C:433:ARG:HD3	2.21	0.40
2:C:504:ASP:OD1	2:C:504:ASP:N	2.54	0.40
2:C:677:PHE:CD2	2:C:699:CYS:HB2	2.56	0.40
1:D:22:PHE:CD2	1:D:150:PHE:HD1	2.40	0.40
2:A:236:GLU:HA	2:A:239:LYS:NZ	2.37	0.40
2:A:367:ASP:N	2:A:367:ASP:OD1	2.54	0.40

Continued on next page...

Continued from previous page...

Atom-1	Atom-2	Interatomic distance (Å)	Clash overlap (Å)
2:A:388:ILE:CG2	2:A:392:SER:HB3	2.52	0.40
2:A:454:GLN:HE22	2:A:509:ILE:HA	1.86	0.40
2:A:557:CYS:O	2:A:561:PHE:CD1	2.60	0.40
2:A:564:ALA:O	2:A:568:ILE:HG12	2.21	0.40
2:A:668:ARG:HE	2:A:668:ARG:HB3	1.50	0.40
2:A:713:PRO:HB3	2:A:757:LEU:CD2	2.51	0.40
2:C:225:VAL:O	2:C:229:GLN:OE1	2.39	0.40
2:C:230:LEU:HA	2:C:230:LEU:HD23	1.75	0.40
2:C:403:LYS:HA	2:C:403:LYS:HE2	2.04	0.40
2:C:643:GLU:O	2:C:647:GLU:HB2	2.21	0.40

There are no symmetry-related clashes.

5.3 Torsion angles [i](#)

5.3.1 Protein backbone [i](#)

In the following table, the Percentiles column shows the percent Ramachandran outliers of the chain as a percentile score with respect to all PDB entries followed by that with respect to all EM entries.

The Analysed column shows the number of residues for which the backbone conformation was analysed, and the total number of residues.

Mol	Chain	Analysed	Favoured	Allowed	Outliers	Percentiles	
1	B	180/182 (99%)	157 (87%)	22 (12%)	1 (1%)	25	66
1	D	180/182 (99%)	157 (87%)	22 (12%)	1 (1%)	25	66
2	A	767/796 (96%)	726 (95%)	40 (5%)	1 (0%)	51	86
2	C	767/796 (96%)	723 (94%)	42 (6%)	2 (0%)	41	77
All	All	1894/1956 (97%)	1763 (93%)	126 (7%)	5 (0%)	44	77

All (5) Ramachandran outliers are listed below:

Mol	Chain	Res	Type
2	A	484	PHE
2	C	473	ASP
2	C	693	GLY
1	B	38	GLY
1	D	38	GLY

5.3.2 Protein sidechains [i](#)

In the following table, the Percentiles column shows the percent sidechain outliers of the chain as a percentile score with respect to all PDB entries followed by that with respect to all EM entries.

The Analysed column shows the number of residues for which the sidechain conformation was analysed, and the total number of residues.

Mol	Chain	Analysed	Rotameric	Outliers	Percentiles	
1	B	160/160 (100%)	150 (94%)	10 (6%)	18	43
1	D	160/160 (100%)	150 (94%)	10 (6%)	18	43
2	A	695/720 (96%)	692 (100%)	3 (0%)	91	94
2	C	695/720 (96%)	689 (99%)	6 (1%)	78	87
All	All	1710/1760 (97%)	1681 (98%)	29 (2%)	62	78

All (29) residues with a non-rotameric sidechain are listed below:

Mol	Chain	Res	Type
1	B	1	MET
1	B	2	LEU
1	B	12	PRO
1	B	39	ASN
1	B	40	LEU
1	B	84	LEU
1	B	101	LEU
1	B	139	TYR
1	B	153	MET
1	B	156	GLN
1	D	1	MET
1	D	2	LEU
1	D	12	PRO
1	D	39	ASN
1	D	40	LEU
1	D	84	LEU
1	D	101	LEU
1	D	139	TYR
1	D	153	MET
1	D	156	GLN
2	A	573	LYS
2	A	582	ARG
2	A	705	LYS
2	C	158	ARG

Continued on next page...

Continued from previous page...

Mol	Chain	Res	Type
2	C	239	LYS
2	C	254	ARG
2	C	526	ARG
2	C	695	ARG
2	C	733	LYS

Sometimes sidechains can be flipped to improve hydrogen bonding and reduce clashes. All (32) such sidechains are listed below:

Mol	Chain	Res	Type
2	A	12	GLN
2	A	21	GLN
2	A	75	HIS
2	A	155	GLN
2	A	200	GLN
2	A	202	HIS
2	A	456	GLN
2	A	474	GLN
2	A	586	GLN
2	A	599	HIS
2	A	646	HIS
2	A	652	GLN
2	A	666	GLN
2	A	735	ASN
2	A	741	GLN
2	A	745	GLN
2	A	748	GLN
2	C	29	GLN
2	C	45	HIS
2	C	99	GLN
2	C	186	ASN
2	C	198	GLN
2	C	259	GLN
2	C	331	GLN
2	C	337	GLN
2	C	454	GLN
2	C	506	GLN
2	C	586	GLN
2	C	609	GLN
2	C	716	GLN
2	C	725	ASN
2	C	769	HIS

5.3.3 RNA [i](#)

There are no RNA molecules in this entry.

5.4 Non-standard residues in protein, DNA, RNA chains [i](#)

There are no non-standard protein/DNA/RNA residues in this entry.

5.5 Carbohydrates [i](#)

There are no monosaccharides in this entry.

5.6 Ligand geometry [i](#)

There are no ligands in this entry.

5.7 Other polymers [i](#)

There are no such residues in this entry.

5.8 Polymer linkage issues [i](#)

There are no chain breaks in this entry.

6 Map visualisation [i](#)

This section contains visualisations of the EMDB entry EMD-12220. These allow visual inspection of the internal detail of the map and identification of artifacts.

Images derived from a raw map, generated by summing the deposited half-maps, are presented below the corresponding image components of the primary map to allow further visual inspection and comparison with those of the primary map.

6.1 Orthogonal projections [i](#)

6.1.1 Primary map



X

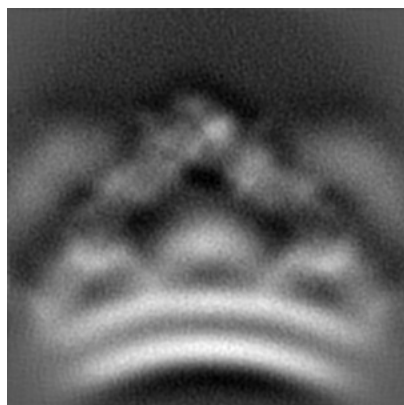


Y

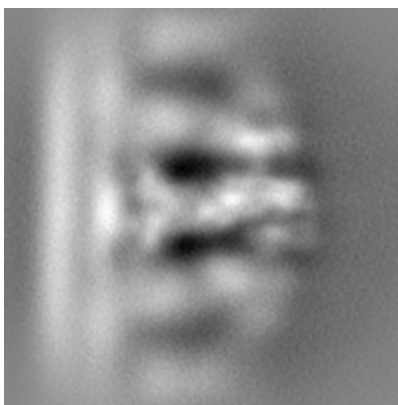


Z

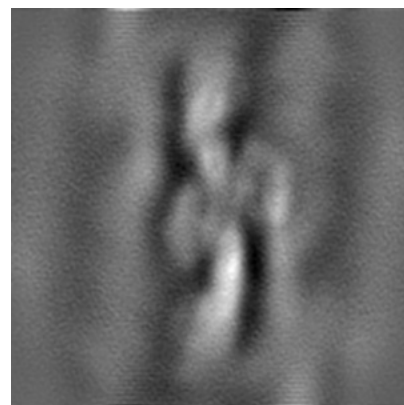
6.1.2 Raw map



X



Y



Z

The images above show the map projected in three orthogonal directions.

6.2 Central slices [i](#)

6.2.1 Primary map



X Index: 84

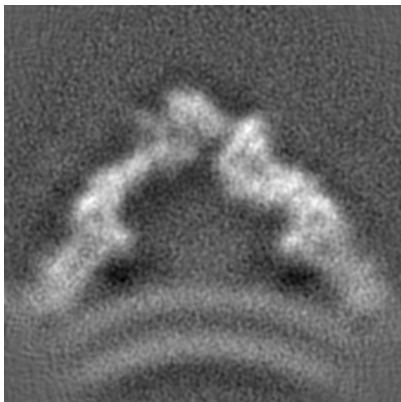


Y Index: 84

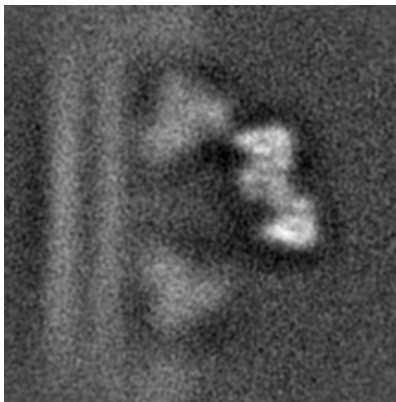


Z Index: 84

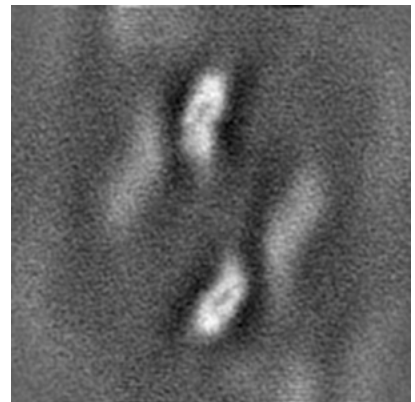
6.2.2 Raw map



X Index: 84



Y Index: 84



Z Index: 84

The images above show central slices of the map in three orthogonal directions.

6.3 Largest variance slices [i](#)

6.3.1 Primary map



X Index: 88

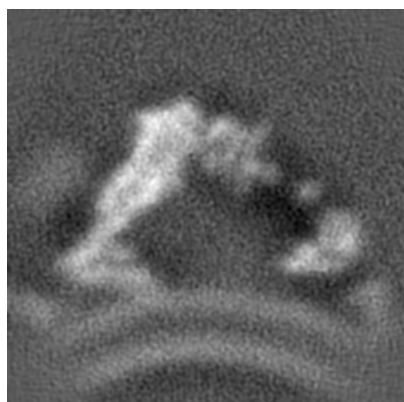


Y Index: 86

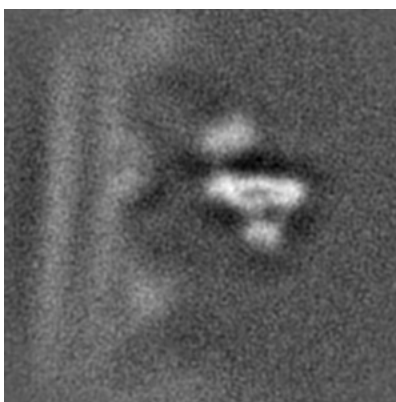


Z Index: 107

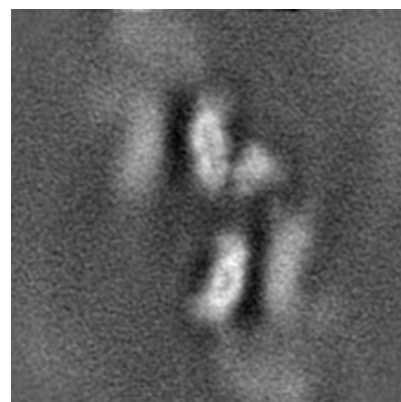
6.3.2 Raw map



X Index: 92



Y Index: 61

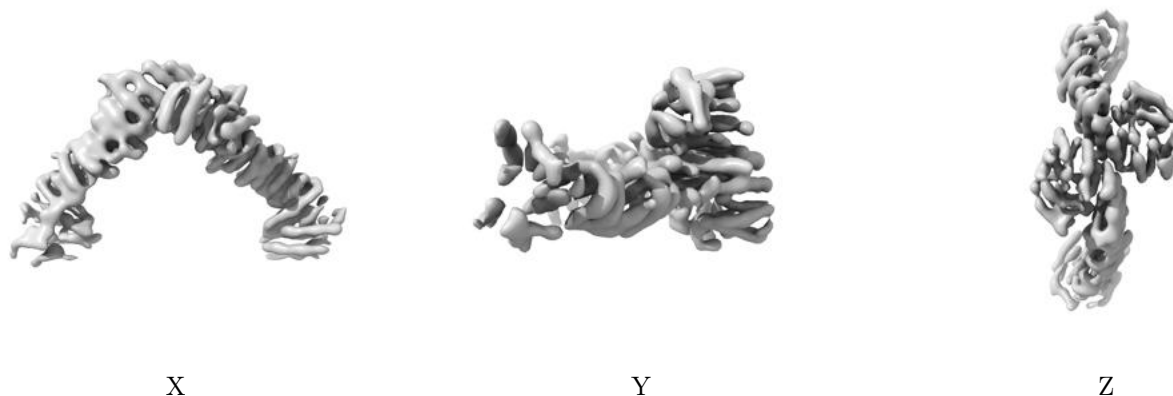


Z Index: 95

The images above show the largest variance slices of the map in three orthogonal directions.

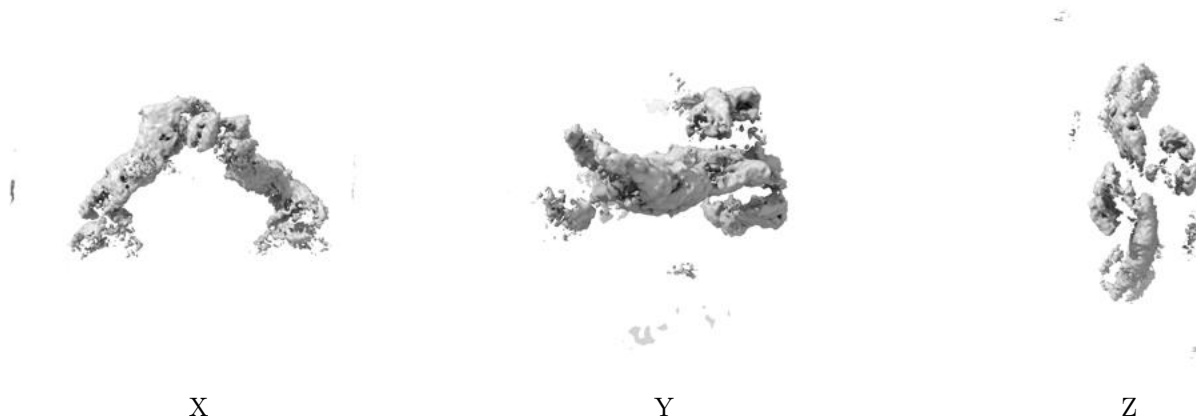
6.4 Orthogonal surface views [i](#)

6.4.1 Primary map



The images above show the 3D surface view of the map at the recommended contour level 0.021. These images, in conjunction with the slice images, may facilitate assessment of whether an appropriate contour level has been provided.

6.4.2 Raw map



These images show the 3D surface of the raw map. The raw map's contour level was selected so that its surface encloses the same volume as the primary map does at its recommended contour level.

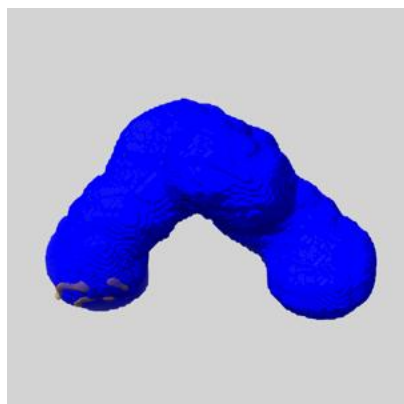
6.5 Mask visualisation [i](#)

This section shows the 3D surface view of the primary map at 50% transparency overlaid with the specified mask at 0% transparency

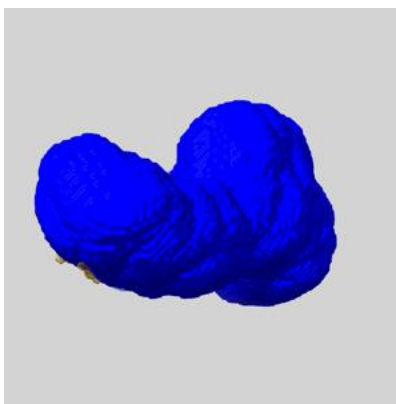
A mask typically either:

- Encompasses the whole structure
- Separates out a domain, a functional unit, a monomer or an area of interest from a larger structure

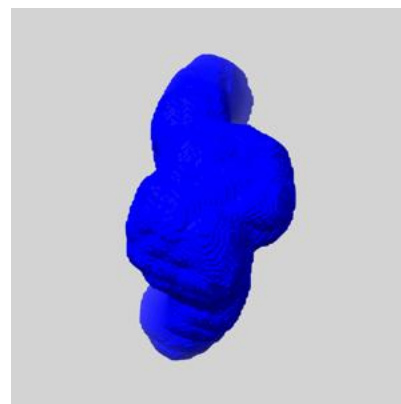
6.5.1 emd_12220_msk_1.map [i](#)



X



Y

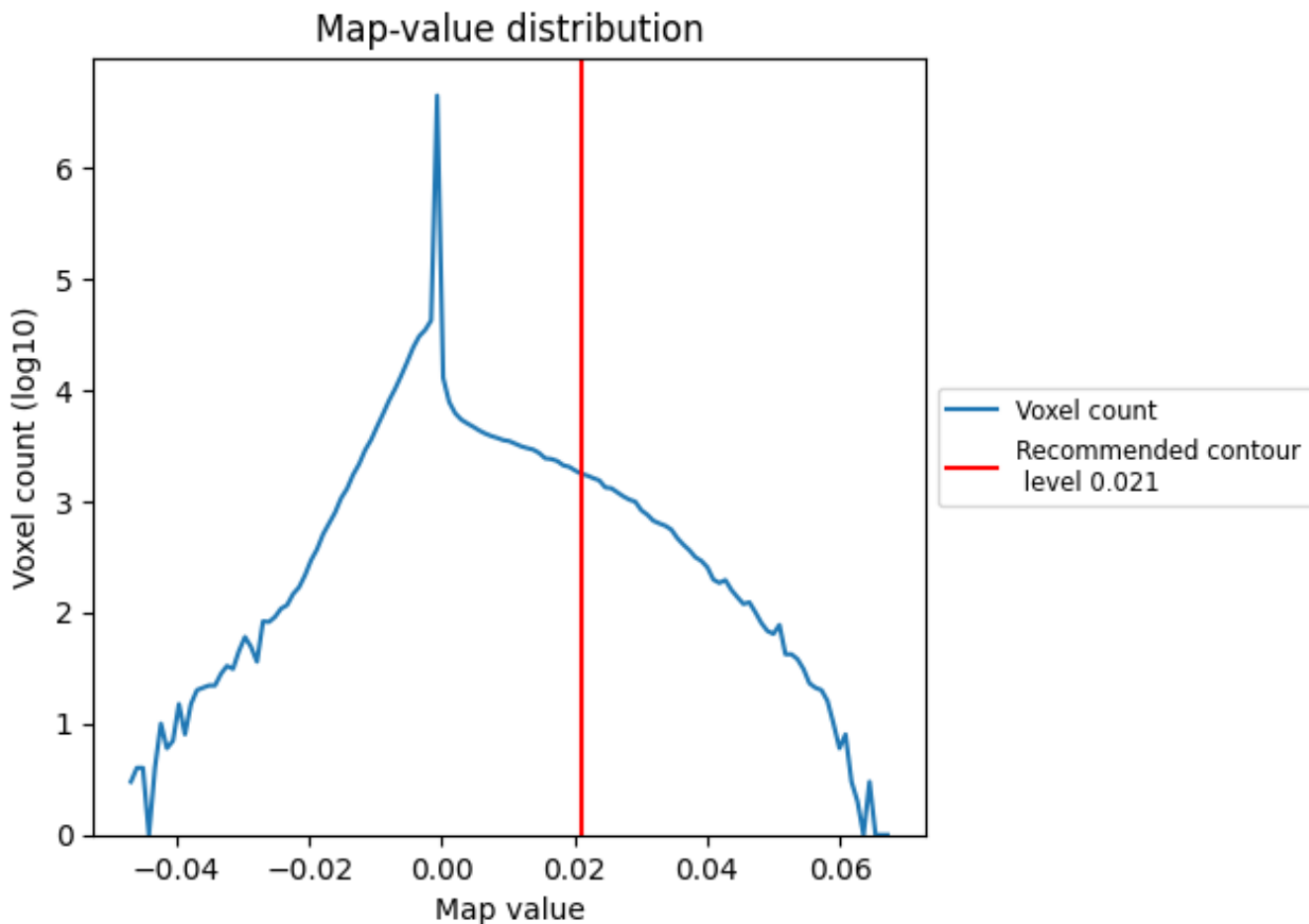


Z

7 Map analysis [i](#)

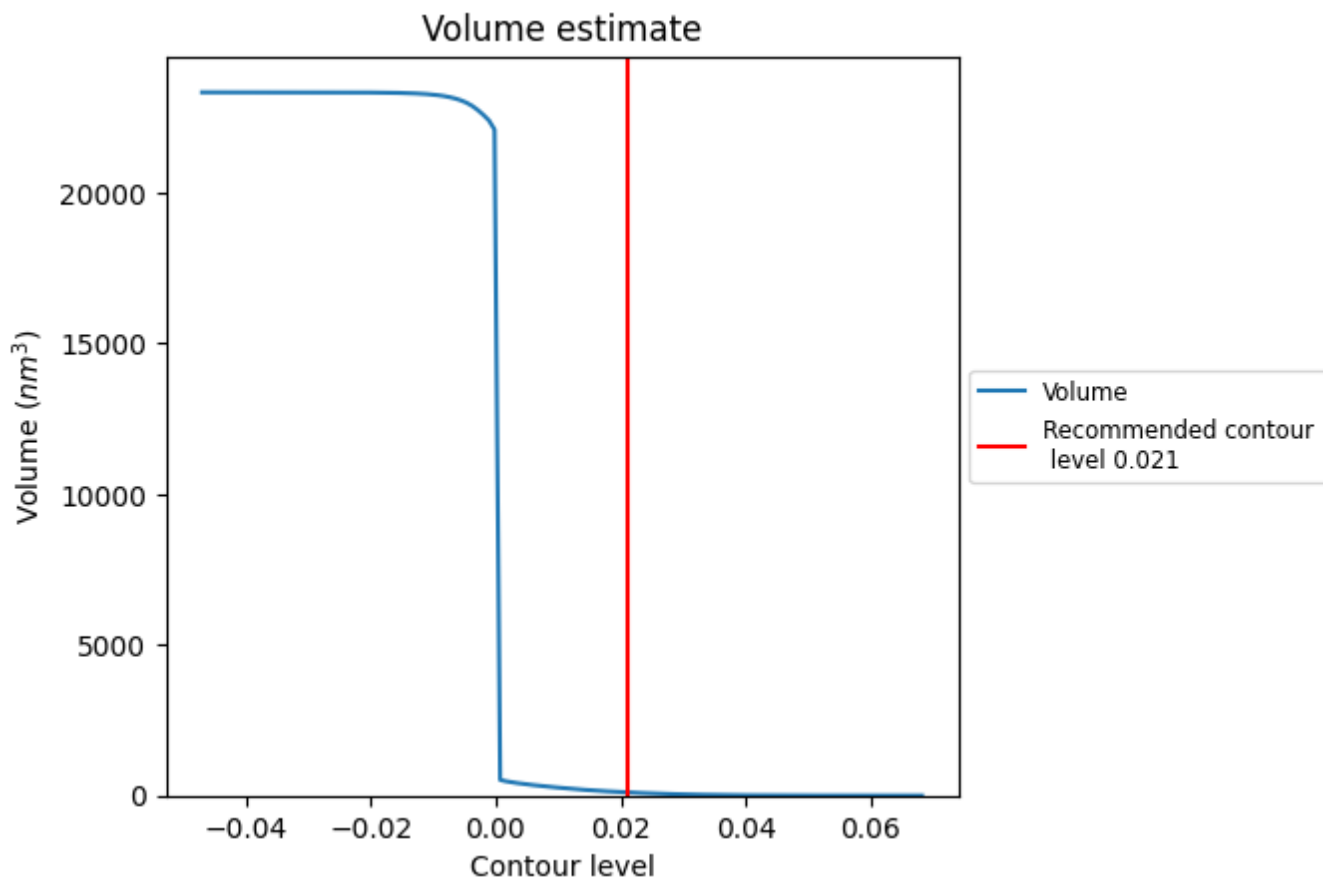
This section contains the results of statistical analysis of the map.

7.1 Map-value distribution [i](#)



The map-value distribution is plotted in 128 intervals along the x-axis. The y-axis is logarithmic. A spike in this graph at zero usually indicates that the volume has been masked.

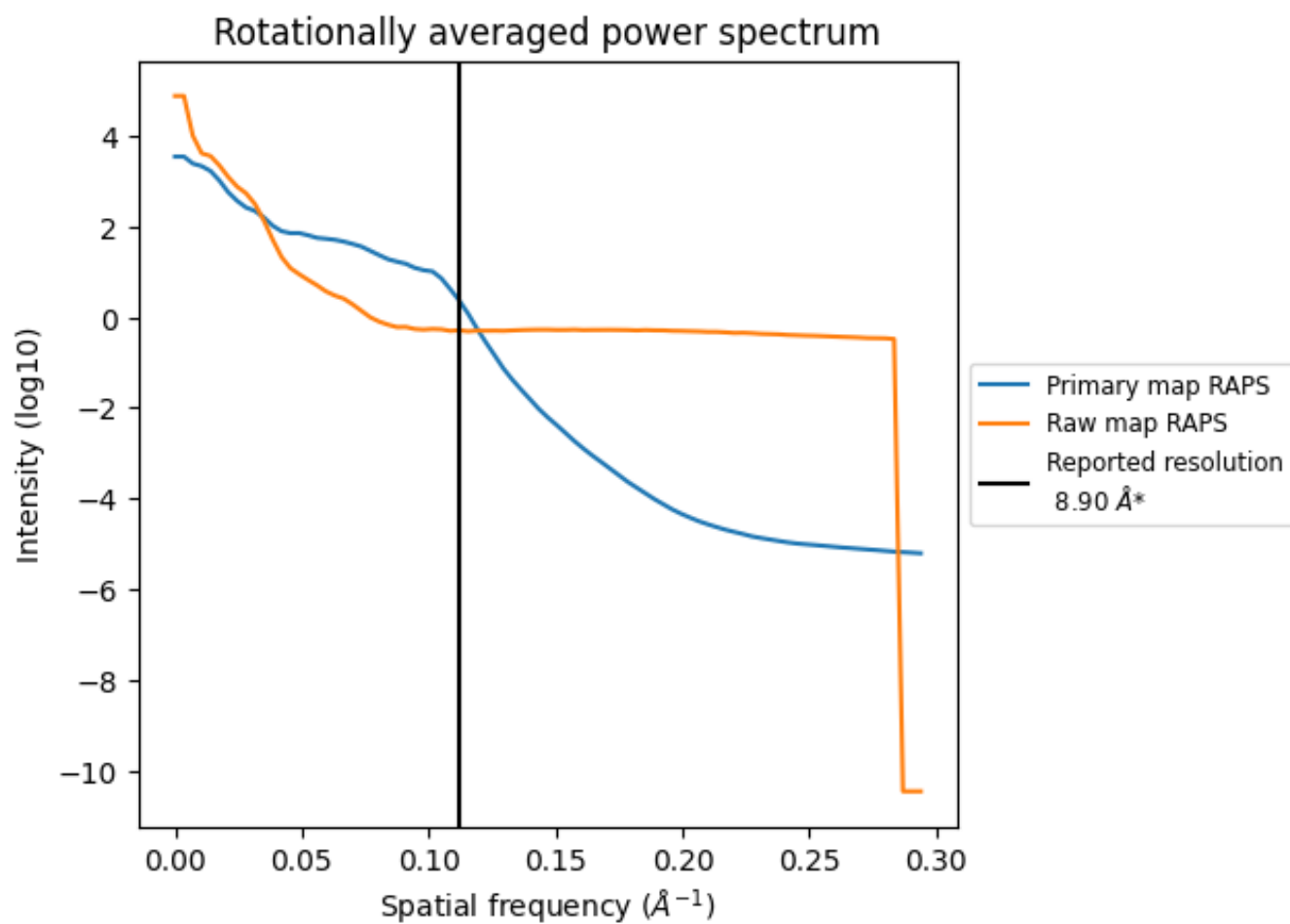
7.2 Volume estimate [i](#)



The volume at the recommended contour level is 106 nm³; this corresponds to an approximate mass of 96 kDa.

The volume estimate graph shows how the enclosed volume varies with the contour level. The recommended contour level is shown as a vertical line and the intersection between the line and the curve gives the volume of the enclosed surface at the given level.

7.3 Rotationally averaged power spectrum [\(i\)](#)

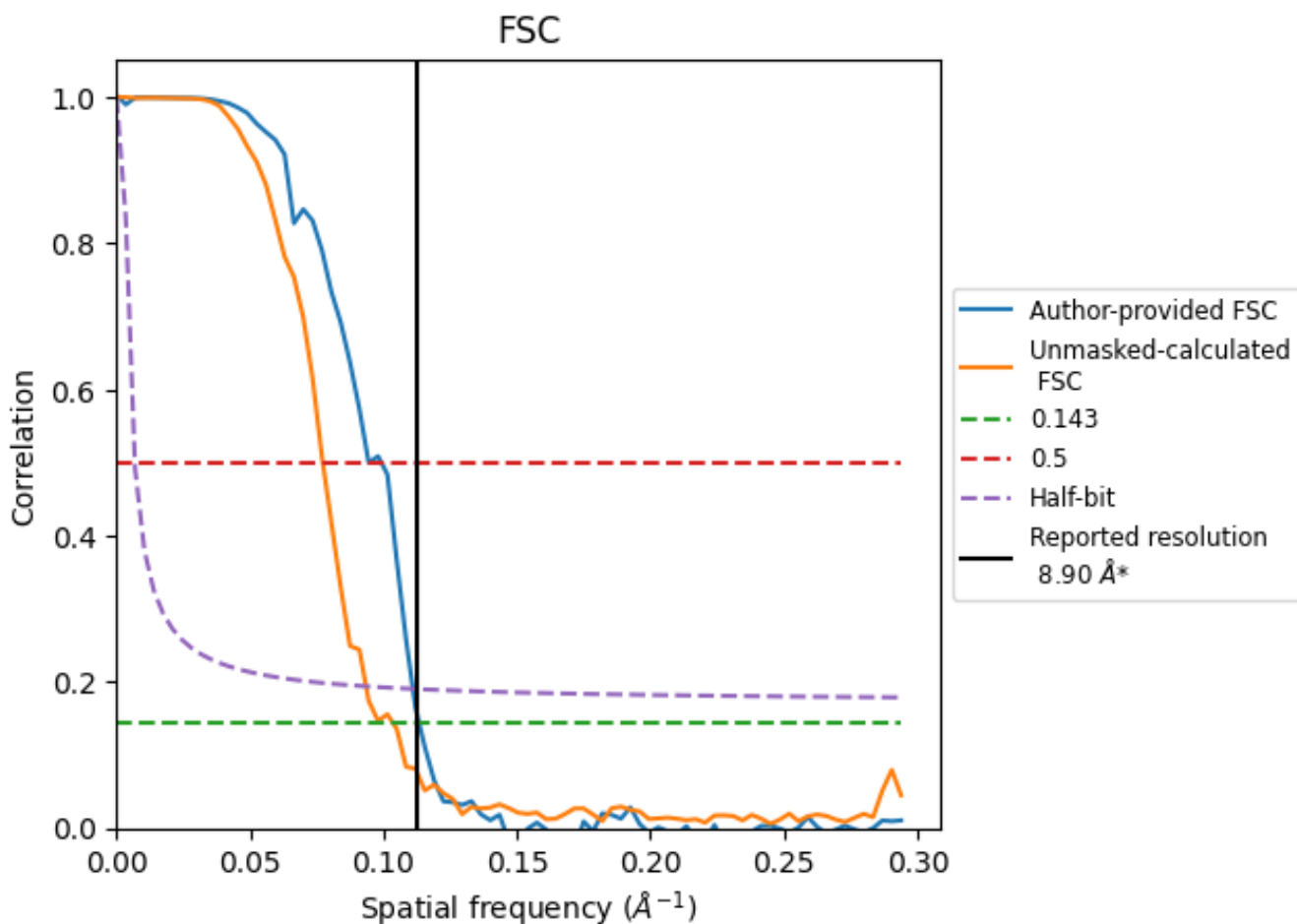


*Reported resolution corresponds to spatial frequency of 0.112 Å⁻¹

8 Fourier-Shell correlation [i](#)

Fourier-Shell Correlation (FSC) is the most commonly used method to estimate the resolution of single-particle and subtomogram-averaged maps. The shape of the curve depends on the imposed symmetry, mask and whether or not the two 3D reconstructions used were processed from a common reference. The reported resolution is shown as a black line. A curve is displayed for the half-bit criterion in addition to lines showing the 0.143 gold standard cut-off and 0.5 cut-off.

8.1 FSC [i](#)



*Reported resolution corresponds to spatial frequency of 0.112 Å⁻¹

8.2 Resolution estimates [i](#)

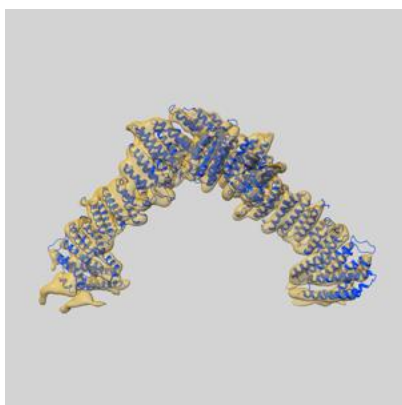
Resolution estimate (Å)	Estimation criterion (FSC cut-off)		
	0.143	0.5	Half-bit
Reported by author	8.90	-	-
Author-provided FSC curve	8.82	10.58	9.01
Unmasked-calculated*	9.65	12.94	10.70

*Resolution estimate based on FSC curve calculated by comparison of deposited half-maps.

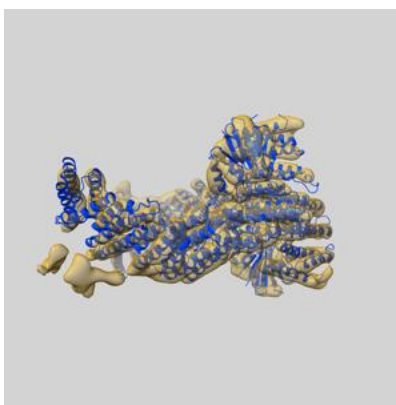
9 Map-model fit [i](#)

This section contains information regarding the fit between EMDB map EMD-12220 and PDB model 7BLN. Per-residue inclusion information can be found in section 3 on page 4.

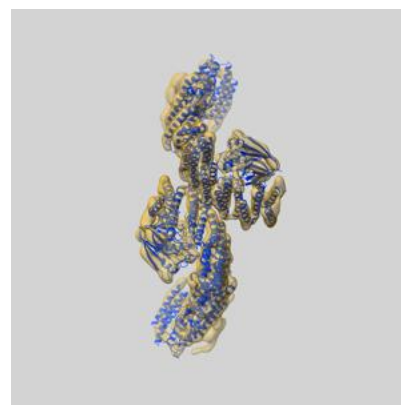
9.1 Map-model overlay [i](#)



X



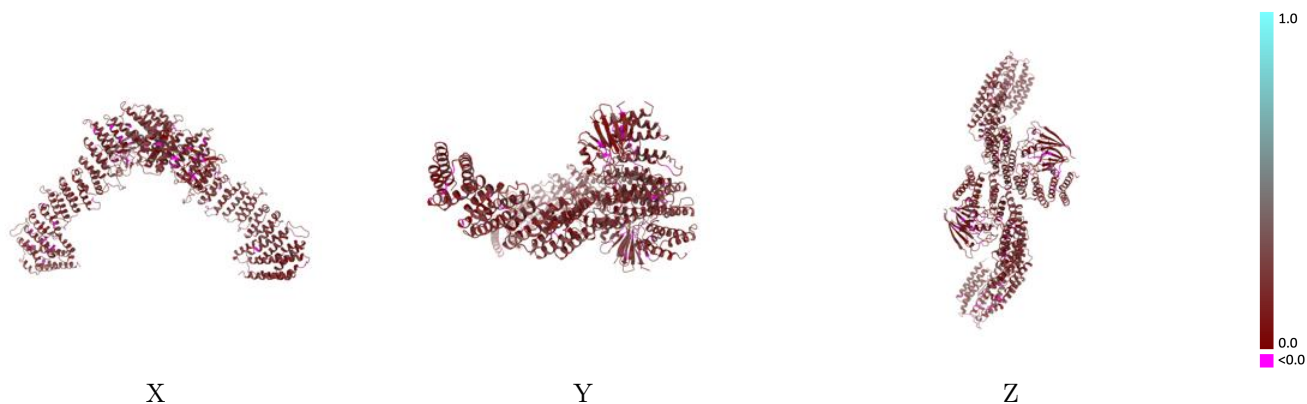
Y



Z

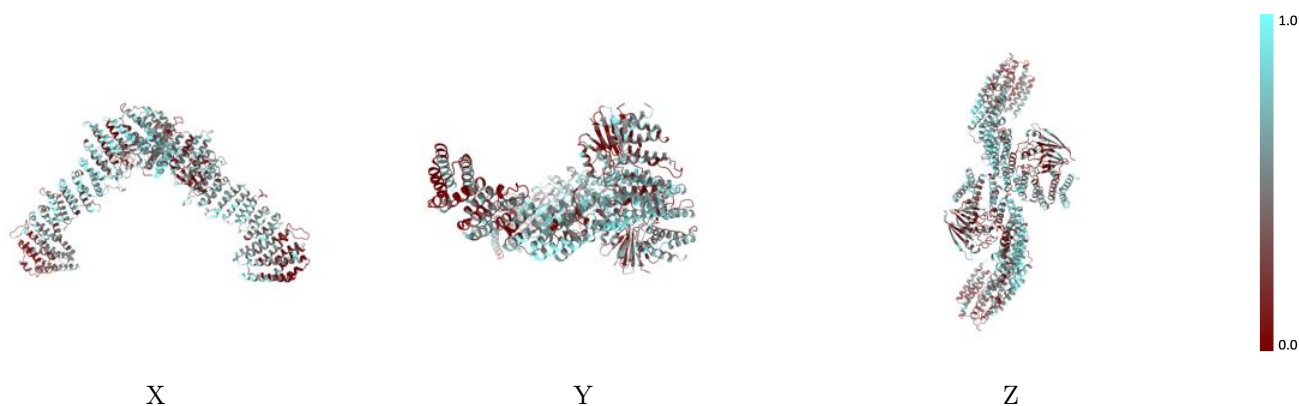
The images above show the 3D surface view of the map at the recommended contour level 0.021 at 50% transparency in yellow overlaid with a ribbon representation of the model coloured in blue. These images allow for the visual assessment of the quality of fit between the atomic model and the map.

9.2 Q-score mapped to coordinate model [i](#)



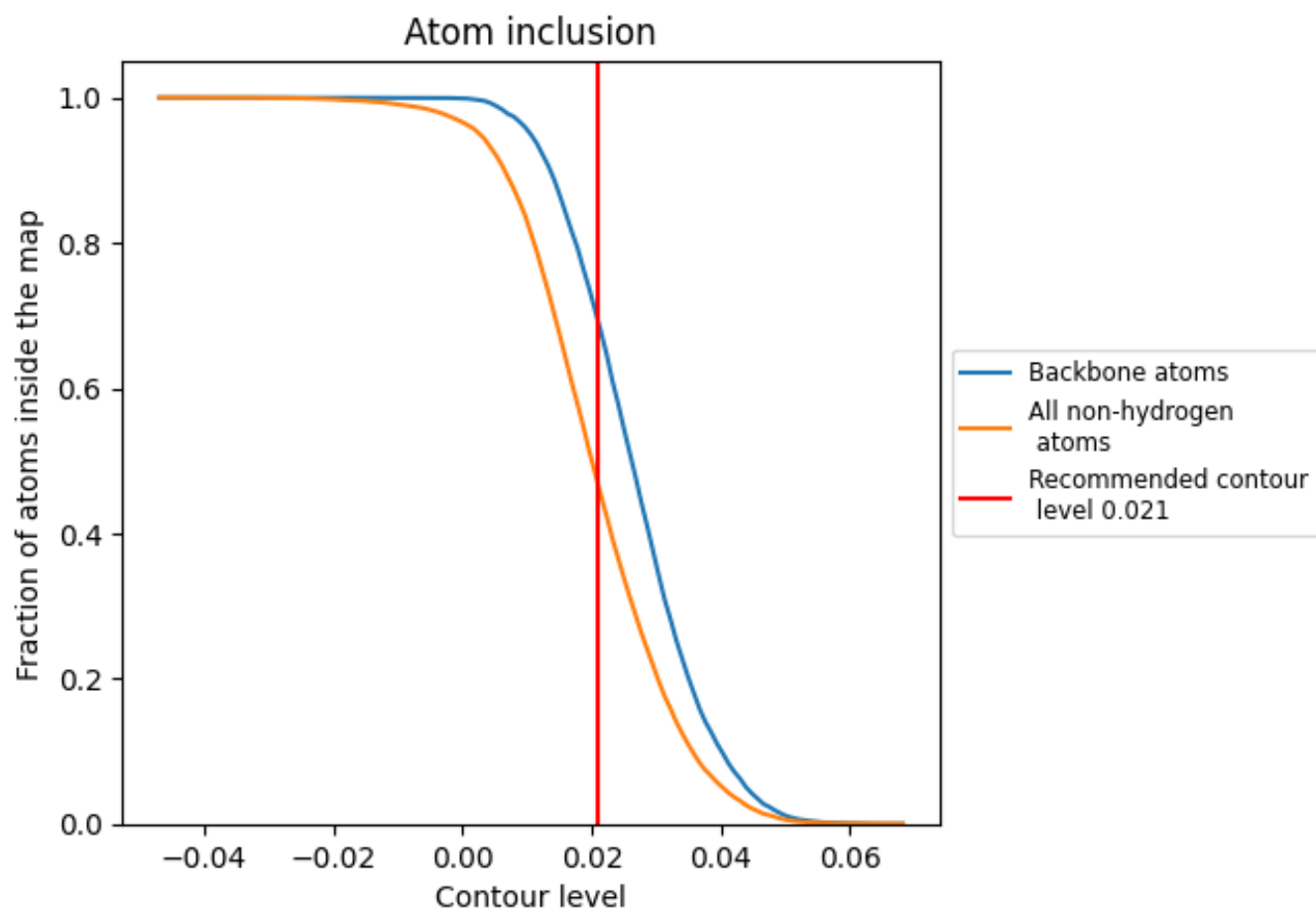
The images above show the model with each residue coloured according to its Q-score. This shows their resolvability in the map with higher Q-score values reflecting better resolvability. Please note: Q-score is calculating the resolvability of atoms, and thus high values are only expected at resolutions at which atoms can be resolved. Low Q-score values may therefore be expected for many entries.

9.3 Atom inclusion mapped to coordinate model [i](#)



The images above show the model with each residue coloured according to its atom inclusion. This shows to what extent they are inside the map at the recommended contour level (0.021).











9.4 Atom inclusion [i](#)



At the recommended contour level, 69% of all backbone atoms, 47% of all non-hydrogen atoms, are inside the map.

9.5 Map-model fit summary [i](#)

The table lists the average atom inclusion at the recommended contour level (0.021) and Q-score for the entire model and for each chain.

Chain	Atom inclusion	Q-score
All	 0.4662	 0.1800
A	 0.4963	 0.1890
B	 0.3168	 0.1270
C	 0.5017	 0.1910
D	 0.3343	 0.1380

