



# Full wwPDB X-ray Structure Validation Report ⓘ

Oct 22, 2023 – 05:48 AM EDT

PDB ID : 3BIZ  
Title : Wee1 kinase complex with inhibitor PD331618  
Authors : Squire, C.J.; Dickson, J.M.; Ivanovic, I.; Baker, E.N.  
Deposited on : 2007-12-02  
Resolution : 2.20 Å(reported)

This is a Full wwPDB X-ray Structure Validation Report for a publicly released PDB entry.

We welcome your comments at [validation@mail.wwpdb.org](mailto:validation@mail.wwpdb.org)

A user guide is available at

<https://www.wwpdb.org/validation/2017/XrayValidationReportHelp>

with specific help available everywhere you see the ⓘ symbol.

The types of validation reports are described at

<http://www.wwpdb.org/validation/2017/FAQs#types>.

---

The following versions of software and data (see [references ⓘ](#)) were used in the production of this report:

MolProbity : 4.02b-467  
Mogul : 1.8.5 (274361), CSD as541be (2020)  
Xtriage (Phenix) : 1.13  
EDS : 2.36  
buster-report : 1.1.7 (2018)  
Percentile statistics : 20191225.v01 (using entries in the PDB archive December 25th 2019)  
Refmac : 5.8.0158  
CCP4 : 7.0.044 (Gargrove)  
Ideal geometry (proteins) : Engh & Huber (2001)  
Ideal geometry (DNA, RNA) : Parkinson et al. (1996)  
Validation Pipeline (wwPDB-VP) : 2.36

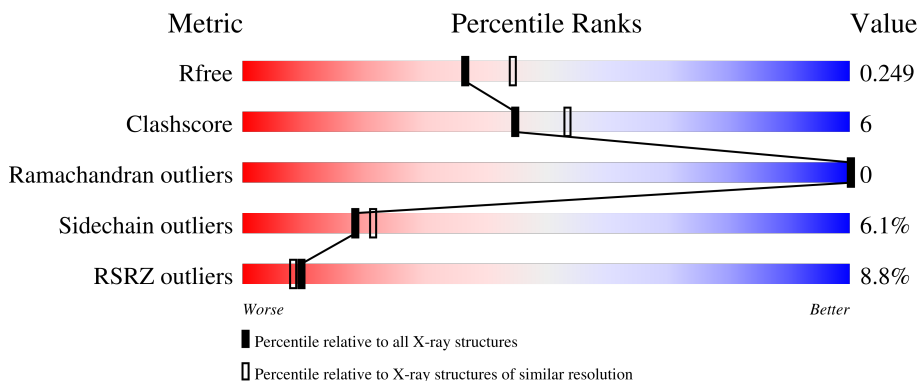
# 1 Overall quality at a glance

The following experimental techniques were used to determine the structure:

*X-RAY DIFFRACTION*

The reported resolution of this entry is 2.20 Å.

Percentile scores (ranging between 0-100) for global validation metrics of the entry are shown in the following graphic. The table shows the number of entries on which the scores are based.



Metric	Whole archive (#Entries)	Similar resolution (#Entries, resolution range(Å))
$R_{free}$	130704	4898 (2.20-2.20)
Clashscore	141614	5594 (2.20-2.20)
Ramachandran outliers	138981	5503 (2.20-2.20)
Sidechain outliers	138945	5504 (2.20-2.20)
RSRZ outliers	127900	4800 (2.20-2.20)

The table below summarises the geometric issues observed across the polymeric chains and their fit to the electron density. The red, orange, yellow and green segments of the lower bar indicate the fraction of residues that contain outliers for  $\geq 3$ , 2, 1 and 0 types of geometric quality criteria respectively. A grey segment represents the fraction of residues that are not modelled. The numeric value for each fraction is indicated below the corresponding segment, with a dot representing fractions  $\leq 5\%$ . The upper red bar (where present) indicates the fraction of residues that have poor fit to the electron density. The numeric value is given above the bar.

Mol	Chain	Length	Quality of chain
1	A	287	 8% 71% 14% 13%

## 2 Entry composition i

There are 4 unique types of molecules in this entry. The entry contains 2153 atoms, of which 0 are hydrogens and 0 are deuteriums.

In the tables below, the ZeroOcc column contains the number of atoms modelled with zero occupancy, the AltConf column contains the number of residues with at least one atom in alternate conformation and the Trace column contains the number of residues modelled with at most 2 atoms.

- Molecule 1 is a protein called Wee1-like protein kinase.

Mol	Chain	Residues	Atoms					ZeroOcc	AltConf	Trace
			Total	C	N	O	S			
1	A	250	1990	1263	354	362	11	0	1	0

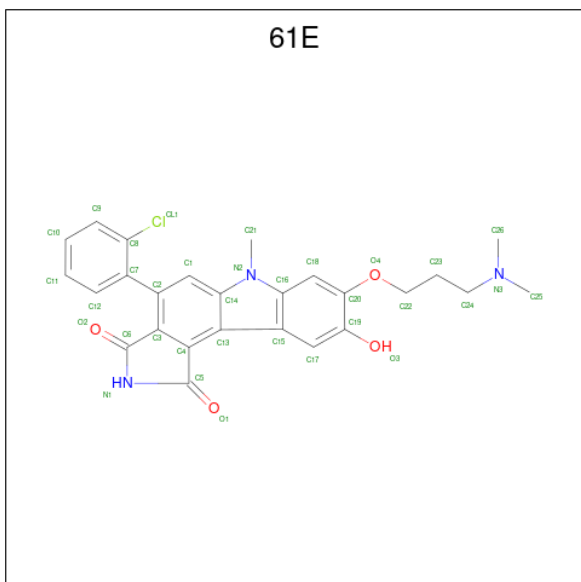
There are 2 discrepancies between the modelled and reference sequences:

Chain	Residue	Modelled	Actual	Comment	Reference
A	289	GLY	-	expression tag	UNP P30291
A	290	ALA	-	expression tag	UNP P30291

- Molecule 2 is CHLORIDE ION (three-letter code: CL) (formula: Cl).

Mol	Chain	Residues	Atoms		ZeroOcc	AltConf
2	A	1	Total	Cl	0	0
			1	1		

- Molecule 3 is 4-(2-chlorophenyl)-8-[3-(dimethylamino)propoxy]-9-hydroxy-6-methylpyrrolo[3,4-c]carbazole-1,3(2H,6H)-dione (three-letter code: 61E) (formula: C<sub>26</sub>H<sub>24</sub>ClN<sub>3</sub>O<sub>4</sub>).



Mol	Chain	Residues	Atoms					ZeroOcc	AltConf
			Total	C	Cl	N	O		
3	A	1	34	26	1	3	4	0	0

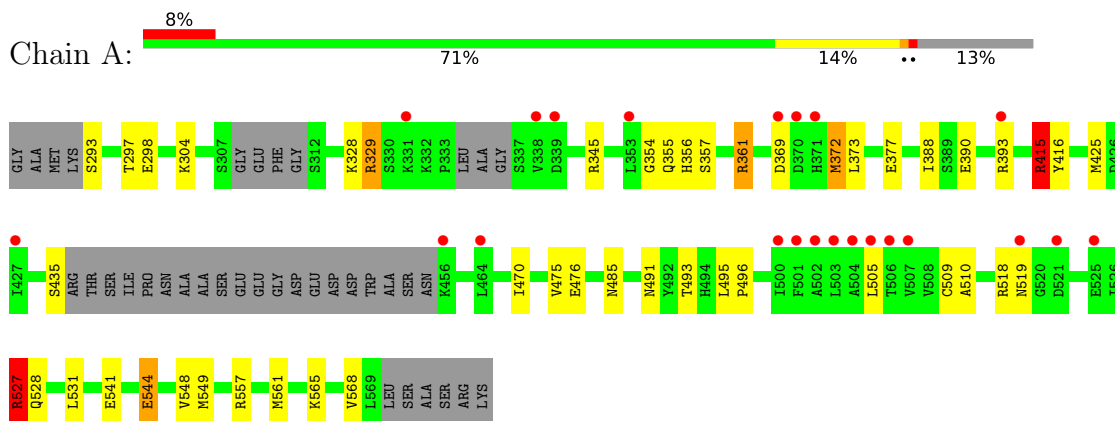
- Molecule 4 is water.

Mol	Chain	Residues	Atoms		ZeroOcc	AltConf
4	A	128	Total	O	0	0
			128	128		

### 3 Residue-property plots [i](#)

These plots are drawn for all protein, RNA, DNA and oligosaccharide chains in the entry. The first graphic for a chain summarises the proportions of the various outlier classes displayed in the second graphic. The second graphic shows the sequence view annotated by issues in geometry and electron density. Residues are color-coded according to the number of geometric quality criteria for which they contain at least one outlier: green = 0, yellow = 1, orange = 2 and red = 3 or more. A red dot above a residue indicates a poor fit to the electron density ( $RSRZ > 2$ ). Stretches of 2 or more consecutive residues without any outlier are shown as a green connector. Residues present in the sample, but not in the model, are shown in grey.

- Molecule 1: Wee1-like protein kinase



## 4 Data and refinement statistics

Property	Value	Source
Space group	P 41 21 2	Depositor
Cell constants a, b, c, $\alpha$ , $\beta$ , $\gamma$	68.86Å 68.86Å 156.24Å 90.00° 90.00° 90.00°	Depositor
Resolution (Å)	28.75 – 2.20 28.72 – 2.20	Depositor EDS
% Data completeness (in resolution range)	100.0 (28.75-2.20) 98.8 (28.72-2.20)	Depositor EDS
$R_{merge}$	0.07	Depositor
$R_{sym}$	(Not available)	Depositor
$\langle I/\sigma(I) \rangle$ <sup>1</sup>	1.67 (at 2.20Å)	Xtrriage
Refinement program	REFMAC 5.4.0061	Depositor
R, $R_{free}$	0.189 , 0.247 0.189 , 0.249	Depositor DCC
$R_{free}$ test set	1002 reflections (5.11%)	wwPDB-VP
Wilson B-factor (Å <sup>2</sup> )	34.7	Xtrriage
Anisotropy	0.363	Xtrriage
Bulk solvent $k_{sol}$ (e/Å <sup>3</sup> ), $B_{sol}$ (Å <sup>2</sup> )	0.37 , 37.7	EDS
L-test for twinning <sup>2</sup>	$\langle  L  \rangle = 0.49$ , $\langle L^2 \rangle = 0.32$	Xtrriage
Estimated twinning fraction	No twinning to report.	Xtrriage
$F_o, F_c$ correlation	0.94	EDS
Total number of atoms	2153	wwPDB-VP
Average B, all atoms (Å <sup>2</sup> )	35.0	wwPDB-VP

Xtrriage's analysis on translational NCS is as follows: *The largest off-origin peak in the Patterson function is 5.02% of the height of the origin peak. No significant pseudotranslation is detected.*

<sup>1</sup>Intensities estimated from amplitudes.

<sup>2</sup>Theoretical values of  $\langle |L| \rangle$ ,  $\langle L^2 \rangle$  for acentric reflections are 0.5, 0.333 respectively for untwinned datasets, and 0.375, 0.2 for perfectly twinned datasets.

## 5 Model quality [i](#)

### 5.1 Standard geometry [i](#)

Bond lengths and bond angles in the following residue types are not validated in this section: 61E, CL

The Z score for a bond length (or angle) is the number of standard deviations the observed value is removed from the expected value. A bond length (or angle) with  $|Z| > 5$  is considered an outlier worth inspection. RMSZ is the root-mean-square of all Z scores of the bond lengths (or angles).

Mol	Chain	Bond lengths		Bond angles	
		RMSZ	# Z  >5	RMSZ	# Z  >5
1	A	1.22	5/2031 (0.2%)	1.09	10/2741 (0.4%)

All (5) bond length outliers are listed below:

Mol	Chain	Res	Type	Atoms	Z	Observed(Å)	Ideal(Å)
1	A	298	GLU	CD-OE2	-8.06	1.16	1.25
1	A	328	LYS	CD-CE	6.23	1.66	1.51
1	A	544	GLU	CG-CD	6.10	1.61	1.51
1	A	509	CYS	CB-SG	-5.80	1.72	1.81
1	A	298	GLU	CG-CD	5.17	1.59	1.51

All (10) bond angle outliers are listed below:

Mol	Chain	Res	Type	Atoms	Z	Observed(°)	Ideal(°)
1	A	329	ARG	NE-CZ-NH1	11.60	126.10	120.30
1	A	345	ARG	NE-CZ-NH1	7.91	124.25	120.30
1	A	329	ARG	NE-CZ-NH2	-6.93	116.83	120.30
1	A	527	ARG	NE-CZ-NH1	6.78	123.69	120.30
1	A	415	ARG	NE-CZ-NH1	6.71	123.66	120.30
1	A	372	MET	CA-CB-CG	6.32	124.05	113.30
1	A	527	ARG	CB-CG-CD	5.84	126.79	111.60
1	A	518	ARG	NE-CZ-NH2	-5.83	117.38	120.30
1	A	568	VAL	CG1-CB-CG2	-5.17	102.63	110.90
1	A	531	LEU	CB-CG-CD1	-5.12	102.29	111.00

There are no chirality outliers.

There are no planarity outliers.

## 5.2 Too-close contacts

In the following table, the Non-H and H(model) columns list the number of non-hydrogen atoms and hydrogen atoms in the chain respectively. The H(added) column lists the number of hydrogen atoms added and optimized by MolProbity. The Clashes column lists the number of clashes within the asymmetric unit, whereas Symm-Clashes lists symmetry-related clashes.

Mol	Chain	Non-H	H(model)	H(added)	Clashes	Symm-Clashes
1	A	1990	0	1971	25	1
2	A	1	0	0	0	0
3	A	34	0	23	1	0
4	A	128	0	0	6	1
All	All	2153	0	1994	26	1

The all-atom clashscore is defined as the number of clashes found per 1000 atoms (including hydrogen atoms). The all-atom clashscore for this structure is 6.

All (26) close contacts within the same asymmetric unit are listed below, sorted by their clash magnitude.

Atom-1	Atom-2	Interatomic distance (Å)	Clash overlap (Å)
1:A:476:GLU:HG2	4:A:663:HOH:O	1.49	1.12
1:A:491:ASN:OD1	1:A:493:THR:HG22	1.72	0.88
1:A:470:ILE:HD11	1:A:496:PRO:HG3	1.79	0.65
1:A:485:ASN:HB2	1:A:527:ARG:HG2	1.80	0.62
1:A:425:MET:HE2	1:A:475:VAL:HG11	1.84	0.60
1:A:544:GLU:HG2	4:A:666:HOH:O	2.02	0.59
1:A:355:GLN:NE2	4:A:606:HOH:O	2.31	0.57
1:A:470:ILE:HD11	1:A:496:PRO:CG	2.36	0.55
1:A:415:ARG:NH1	1:A:561:MET:HG3	2.21	0.54
1:A:361[A]:ARG:HB2	1:A:377:GLU:HB2	1.91	0.53
1:A:354:GLY:HA3	4:A:611:HOH:O	2.09	0.53
1:A:528:GLN:NE2	4:A:660:HOH:O	2.42	0.53
1:A:470:ILE:CD1	1:A:496:PRO:HG3	2.40	0.52
1:A:549:MET:O	1:A:557:ARG:HD3	2.10	0.51
1:A:356:HIS:HB2	1:A:416:TYR:CE2	2.48	0.49
1:A:356:HIS:HB2	1:A:416:TYR:CD2	2.49	0.48
1:A:390:GLU:HG3	1:A:393:ARG:NH2	2.30	0.46
1:A:476:GLU:CG	4:A:663:HOH:O	2.31	0.45
1:A:495:LEU:N	1:A:496:PRO:CD	2.81	0.43
1:A:491:ASN:OD1	1:A:493:THR:CG2	2.55	0.43
1:A:565:LYS:HZ2	1:A:565:LYS:HG2	1.56	0.42
1:A:425:MET:CE	1:A:475:VAL:HG11	2.47	0.42
1:A:329:ARG:HD2	1:A:373:LEU:HD21	2.02	0.42

*Continued on next page...*



Continued from previous page...

Atom-1	Atom-2	Interatomic distance (Å)	Clash overlap (Å)
1:A:388:ILE:HG12	1:A:510:ALA:HA	2.02	0.42
3:A:576:61E:H25	3:A:576:61E:H23	1.92	0.41
1:A:505:LEU:HD23	1:A:505:LEU:HA	1.96	0.40

All (1) symmetry-related close contacts are listed below. The label for Atom-2 includes the symmetry operator and encoded unit-cell translations to be applied.

Atom-1	Atom-2	Interatomic distance (Å)	Clash overlap (Å)
1:A:361[B]:ARG:NH2	4:A:611:HOH:O[8_665]	2.09	0.11

## 5.3 Torsion angles [i](#)

### 5.3.1 Protein backbone [i](#)

In the following table, the Percentiles column shows the percent Ramachandran outliers of the chain as a percentile score with respect to all X-ray entries followed by that with respect to entries of similar resolution.

The Analysed column shows the number of residues for which the backbone conformation was analysed, and the total number of residues.

Mol	Chain	Analysed	Favoured	Allowed	Outliers	Percentiles
1	A	243/287 (85%)	236 (97%)	7 (3%)	0	<a href="#">100</a> <a href="#">100</a>

There are no Ramachandran outliers to report.

### 5.3.2 Protein sidechains [i](#)

In the following table, the Percentiles column shows the percent sidechain outliers of the chain as a percentile score with respect to all X-ray entries followed by that with respect to entries of similar resolution.

The Analysed column shows the number of residues for which the sidechain conformation was analysed, and the total number of residues.

Mol	Chain	Analysed	Rotameric	Outliers	Percentiles
1	A	215/245 (88%)	201 (94%)	14 (6%)	<a href="#">17</a> <a href="#">19</a>

All (14) residues with a non-rotameric sidechain are listed below:

Mol	Chain	Res	Type
1	A	293	SER
1	A	297	THR
1	A	304	LYS
1	A	357	SER
1	A	361[A]	ARG
1	A	361[B]	ARG
1	A	369	ASP
1	A	372	MET
1	A	415	ARG
1	A	435	SER
1	A	519	ASN
1	A	527	ARG
1	A	541	GLU
1	A	548	VAL

Sometimes sidechains can be flipped to improve hydrogen bonding and reduce clashes. There are no such sidechains identified.

### 5.3.3 RNA [i](#)

There are no RNA molecules in this entry.

## 5.4 Non-standard residues in protein, DNA, RNA chains [i](#)

There are no non-standard protein/DNA/RNA residues in this entry.

## 5.5 Carbohydrates [i](#)

There are no monosaccharides in this entry.

## 5.6 Ligand geometry [i](#)

Of 2 ligands modelled in this entry, 1 is monoatomic - leaving 1 for Mogul analysis.

In the following table, the Counts columns list the number of bonds (or angles) for which Mogul statistics could be retrieved, the number of bonds (or angles) that are observed in the model and the number of bonds (or angles) that are defined in the Chemical Component Dictionary. The Link column lists molecule types, if any, to which the group is linked. The Z score for a bond length (or angle) is the number of standard deviations the observed value is removed from the expected value. A bond length (or angle) with  $|Z| > 2$  is considered an outlier worth inspection. RMSZ is the root-mean-square of all Z scores of the bond lengths (or angles).

Mol	Type	Chain	Res	Link	Bond lengths			Bond angles		
					Counts	RMSZ	# Z  > 2	Counts	RMSZ	# Z  > 2
3	61E	A	576	-	34,38,38	2.35	9 (26%)	37,57,57	2.30	10 (27%)

In the following table, the Chirals column lists the number of chiral outliers, the number of chiral centers analysed, the number of these observed in the model and the number defined in the Chemical Component Dictionary. Similar counts are reported in the Torsion and Rings columns. '-' means no outliers of that kind were identified.

Mol	Type	Chain	Res	Link	Chirals	Torsions	Rings
3	61E	A	576	-	-	3/7/11/11	0/5/5/5

All (9) bond length outliers are listed below:

Mol	Chain	Res	Type	Atoms	Z	Observed(Å)	Ideal(Å)
3	A	576	61E	C17-C19	5.96	1.43	1.37
3	A	576	61E	O3-C19	-5.04	1.26	1.36
3	A	576	61E	C4-C5	-4.87	1.41	1.49
3	A	576	61E	C6-N1	-4.73	1.31	1.38
3	A	576	61E	C18-C20	3.87	1.43	1.36
3	A	576	61E	C9-C8	3.44	1.44	1.36
3	A	576	61E	C21-N2	3.06	1.52	1.48
3	A	576	61E	C11-C12	2.30	1.41	1.36
3	A	576	61E	C8-C7	2.25	1.46	1.42

All (10) bond angle outliers are listed below:

Mol	Chain	Res	Type	Atoms	Z	Observed(°)	Ideal(°)
3	A	576	61E	C6-N1-C5	-7.85	105.82	112.52
3	A	576	61E	C3-C4-C13	-5.36	118.38	122.49
3	A	576	61E	C13-C4-C5	4.80	136.94	129.76
3	A	576	61E	C7-C8-CL1	4.01	126.56	119.21
3	A	576	61E	O1-C5-C4	-3.30	125.40	129.32
3	A	576	61E	C19-C17-C15	-2.79	120.29	121.57
3	A	576	61E	O2-C6-C3	-2.78	126.03	129.32
3	A	576	61E	C9-C8-CL1	-2.60	112.22	118.57
3	A	576	61E	C2-C1-C14	-2.28	118.48	120.99
3	A	576	61E	C11-C12-C7	-2.27	117.75	120.89

There are no chirality outliers.

All (3) torsion outliers are listed below:

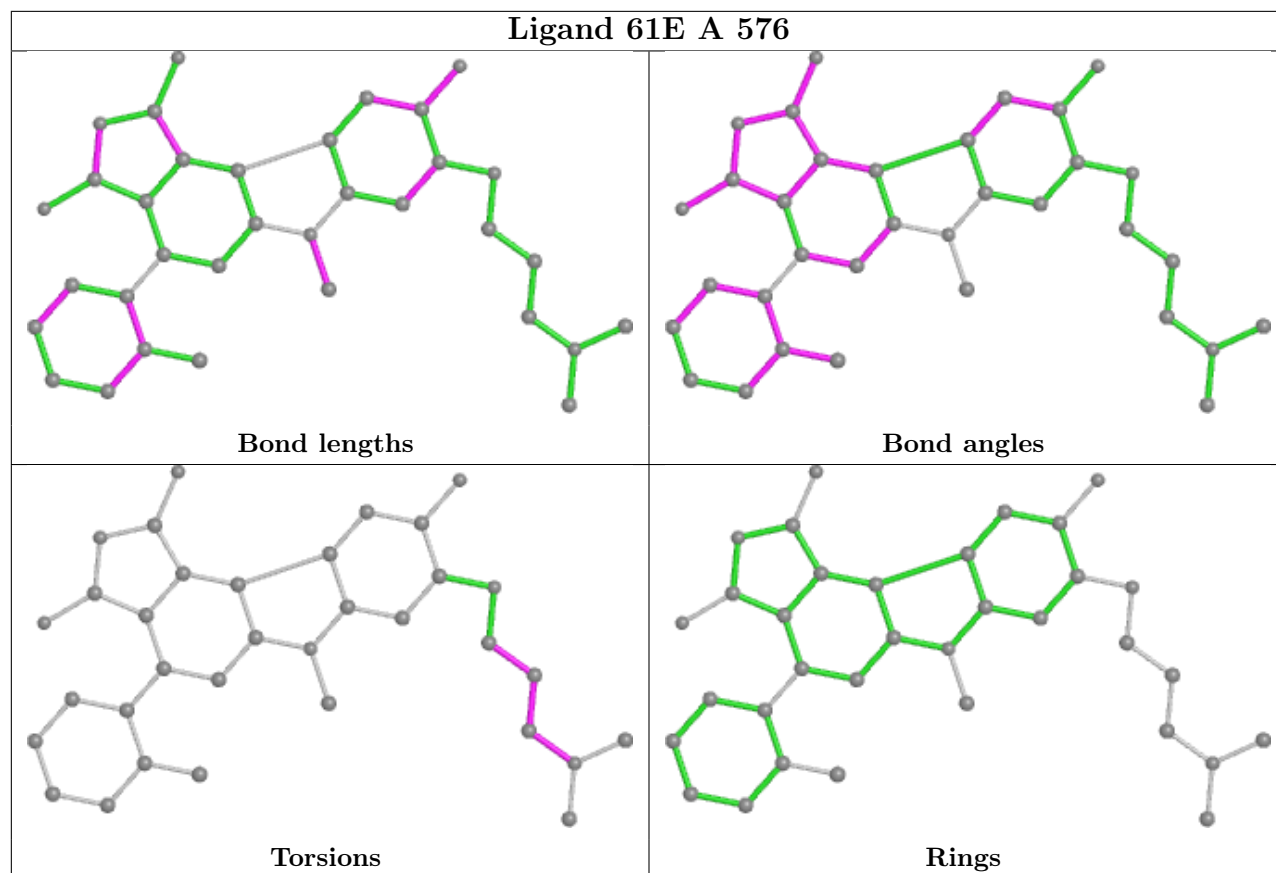
Mol	Chain	Res	Type	Atoms
3	A	576	61E	C22-C23-C24-N3
3	A	576	61E	O4-C22-C23-C24
3	A	576	61E	C23-C24-N3-C25

There are no ring outliers.

1 monomer is involved in 1 short contact:

Mol	Chain	Res	Type	Clashes	Symm-Clashes
3	A	576	61E	1	0

The following is a two-dimensional graphical depiction of Mogul quality analysis of bond lengths, bond angles, torsion angles, and ring geometry for all instances of the Ligand of Interest. In addition, ligands with molecular weight > 250 and outliers as shown on the validation Tables will also be included. For torsion angles, if less than 5% of the Mogul distribution of torsion angles is within 10 degrees of the torsion angle in question, then that torsion angle is considered an outlier. Any bond that is central to one or more torsion angles identified as an outlier by Mogul will be highlighted in the graph. For rings, the root-mean-square deviation (RMSD) between the ring in question and similar rings identified by Mogul is calculated over all ring torsion angles. If the average RMSD is greater than 60 degrees and the minimal RMSD between the ring in question and any Mogul-identified rings is also greater than 60 degrees, then that ring is considered an outlier. The outliers are highlighted in purple. The color gray indicates Mogul did not find sufficient equivalents in the CSD to analyse the geometry.



## 5.7 Other polymers [i](#)

There are no such residues in this entry.

## 5.8 Polymer linkage issues [i](#)

There are no chain breaks in this entry.

## 6 Fit of model and data [i](#)

### 6.1 Protein, DNA and RNA chains [i](#)

In the following table, the column labelled ‘#RSRZ> 2’ contains the number (and percentage) of RSRZ outliers, followed by percent RSRZ outliers for the chain as percentile scores relative to all X-ray entries and entries of similar resolution. The OWAB column contains the minimum, median, 95<sup>th</sup> percentile and maximum values of the occupancy-weighted average B-factor per residue. The column labelled ‘Q< 0.9’ lists the number of (and percentage) of residues with an average occupancy less than 0.9.

Mol	Chain	Analysed	<RSRZ>	#RSRZ>2	OWAB(Å <sup>2</sup> )	Q<0.9
1	A	250/287 (87%)	0.34	22 (8%) <b>10</b> <b>8</b>	23, 34, 49, 58	0

All (22) RSRZ outliers are listed below:

Mol	Chain	Res	Type	RSRZ
1	A	338	VAL	5.2
1	A	369	ASP	4.2
1	A	502	ALA	3.9
1	A	503	LEU	3.9
1	A	521	ASP	3.6
1	A	427	ILE	3.4
1	A	500	ILE	3.1
1	A	371	HIS	2.9
1	A	504	ALA	2.9
1	A	393	ARG	2.8
1	A	370	ASP	2.7
1	A	507	VAL	2.7
1	A	339	ASP	2.5
1	A	353	LEU	2.5
1	A	519	ASN	2.5
1	A	505	LEU	2.4
1	A	456	LYS	2.3
1	A	331	LYS	2.3
1	A	501	PHE	2.2
1	A	525	GLU	2.1
1	A	506	THR	2.1
1	A	464	LEU	2.0

### 6.2 Non-standard residues in protein, DNA, RNA chains [i](#)

There are no non-standard protein/DNA/RNA residues in this entry.

### 6.3 Carbohydrates [i](#)

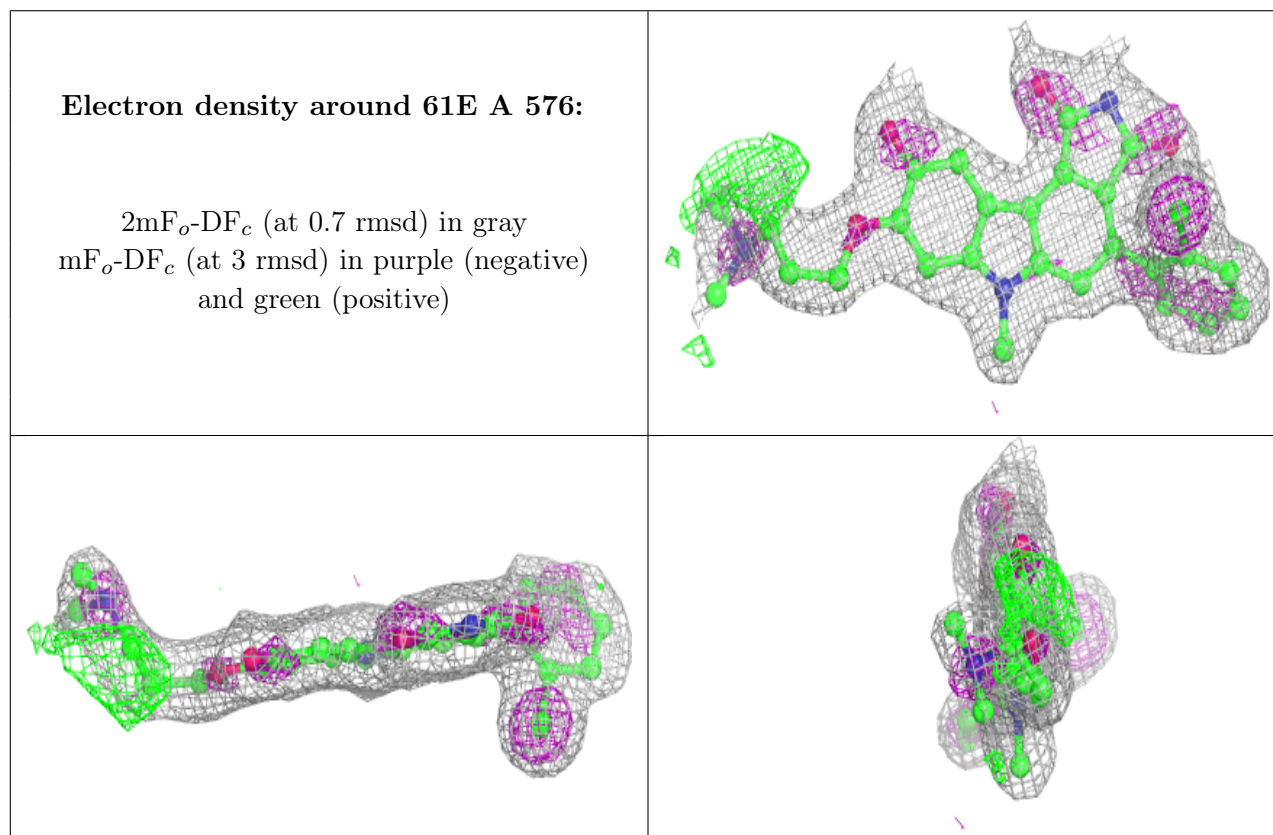
There are no monosaccharides in this entry.

### 6.4 Ligands [i](#)

In the following table, the Atoms column lists the number of modelled atoms in the group and the number defined in the chemical component dictionary. The B-factors column lists the minimum, median, 95<sup>th</sup> percentile and maximum values of B factors of atoms in the group. The column labelled 'Q< 0.9' lists the number of atoms with occupancy less than 0.9.

Mol	Type	Chain	Res	Atoms	RSCC	RSR	B-factors(Å <sup>2</sup> )	Q<0.9
3	61E	A	576	34/34	0.96	0.13	20,26,52,57	0
2	CL	A	1	1/1	0.99	0.10	33,33,33,33	0

The following is a graphical depiction of the model fit to experimental electron density of all instances of the Ligand of Interest. In addition, ligands with molecular weight > 250 and outliers as shown on the geometry validation Tables will also be included. Each fit is shown from different orientation to approximate a three-dimensional view.



## 6.5 Other polymers [i](#)

There are no such residues in this entry.