



Full wwPDB X-ray Structure Validation Report ⓘ

May 17, 2020 – 12:53 am BST

PDB ID : 4BC5
Title : Crystal structure of human D-xylulokinase in complex with inhibitor 5- deoxy-5-fluoro-D-xylulose
Authors : Bunker, R.D.; Loomes, K.M.; Baker, E.N.
Deposited on : 2012-10-01
Resolution : 1.98 Å(reported)

This is a Full wwPDB X-ray Structure Validation Report for a publicly released PDB entry.

We welcome your comments at validation@mail.wwpdb.org

A user guide is available at

<https://www.wwpdb.org/validation/2017/XrayValidationReportHelp>

with specific help available everywhere you see the ⓘ symbol.

The following versions of software and data (see [references ⓘ](#)) were used in the production of this report:

MolProbity : 4.02b-467
Mogul : 1.8.5 (274361), CSD as541be (2020)
Xtriage (Phenix) : 1.13
EDS : 2.11
Percentile statistics : 20191225.v01 (using entries in the PDB archive December 25th 2019)
Refmac : 5.8.0158
CCP4 : 7.0.044 (Gargrove)
Ideal geometry (proteins) : Engh & Huber (2001)
Ideal geometry (DNA, RNA) : Parkinson et al. (1996)
Validation Pipeline (wwPDB-VP) : 2.11

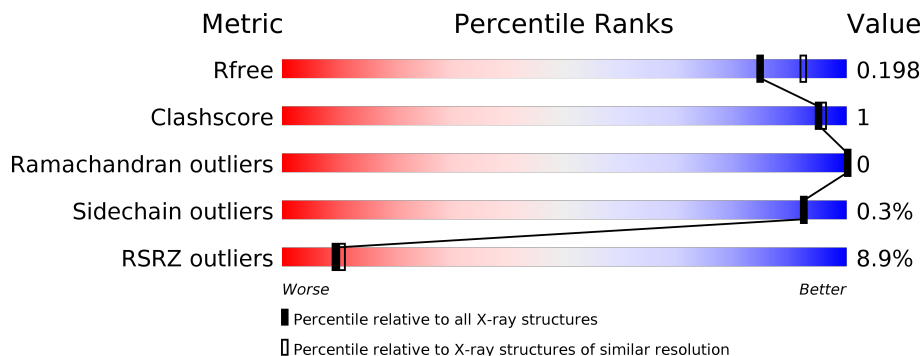
1 Overall quality at a glance

The following experimental techniques were used to determine the structure:

X-RAY DIFFRACTION

The reported resolution of this entry is 1.98 Å.

Percentile scores (ranging between 0-100) for global validation metrics of the entry are shown in the following graphic. The table shows the number of entries on which the scores are based.



Metric	Whole archive (#Entries)	Similar resolution (#Entries, resolution range(Å))
R_{free}	130704	11647 (2.00-1.96)
Clashscore	141614	1014 (1.98-1.98)
Ramachandran outliers	138981	1006 (1.98-1.98)
Sidechain outliers	138945	1006 (1.98-1.98)
RSRZ outliers	127900	11410 (2.00-1.96)

The table below summarises the geometric issues observed across the polymeric chains and their fit to the electron density. The red, orange, yellow and green segments on the lower bar indicate the fraction of residues that contain outliers for ≥ 3 , 2, 1 and 0 types of geometric quality criteria respectively. A grey segment represents the fraction of residues that are not modelled. The numeric value for each fraction is indicated below the corresponding segment, with a dot representing fractions $\leq 5\%$. The upper red bar (where present) indicates the fraction of residues that have poor fit to the electron density. The numeric value is given above the bar.

Mol	Chain	Length	Quality of chain
1	A	538	<p>9% 94%</p>
1	B	538	<p>8% 94%</p>
1	C	538	<p>9% 94%</p>

2 Entry composition

There are 4 unique types of molecules in this entry. The entry contains 24196 atoms, of which 11481 are hydrogens and 0 are deuteriums.

In the tables below, the ZeroOcc column contains the number of atoms modelled with zero occupancy, the AltConf column contains the number of residues with at least one atom in alternate conformation and the Trace column contains the number of residues modelled with at most 2 atoms.

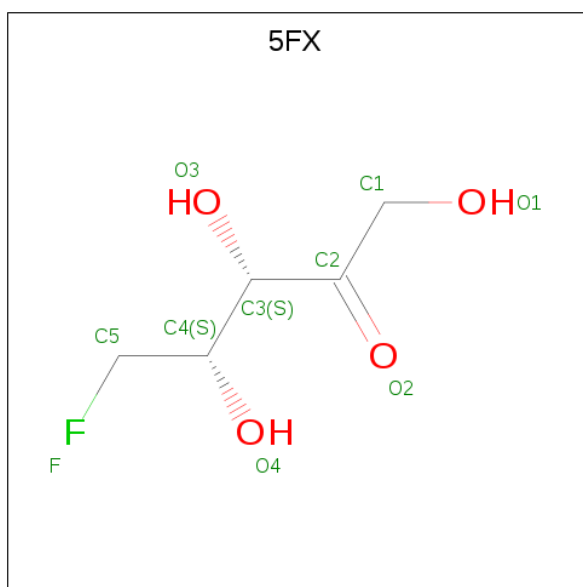
- Molecule 1 is a protein called XYLULOSE KINASE.

Mol	Chain	Residues	Atoms						ZeroOcc	AltConf	Trace
			Total	C	H	N	O	S			
1	A	524	7770	2506	3806	679	753	26	0	2	0
1	B	526	7846	2531	3839	687	763	26	0	4	0
1	C	526	7774	2513	3803	679	754	25	0	0	0

There are 6 discrepancies between the modelled and reference sequences:

Chain	Residue	Modelled	Actual	Comment	Reference
A	-1	GLY	-	expression tag	UNP O75191
A	0	ALA	-	expression tag	UNP O75191
B	-1	GLY	-	expression tag	UNP O75191
B	0	ALA	-	expression tag	UNP O75191
C	-1	GLY	-	expression tag	UNP O75191
C	0	ALA	-	expression tag	UNP O75191

- Molecule 2 is 5-deoxy-5-fluoro-D-xylulose (three-letter code: 5FX) (formula: C₅H₉FO₄).



Mol	Chain	Residues	Atoms				ZeroOcc	AltConf	
			Total	C	F	H			O
2	A	1	19	5	1	9	4	0	0
2	B	1	19	5	1	9	4	0	0
2	C	1	19	5	1	9	4	0	0

- Molecule 3 is 1,2-ETHANEDIOL (three-letter code: EDO) (formula: $C_2H_6O_2$).



Mol	Chain	Residues	Atoms				ZeroOcc	AltConf
			Total	C	H	O		
3	C	1	10	2	6	2	0	0

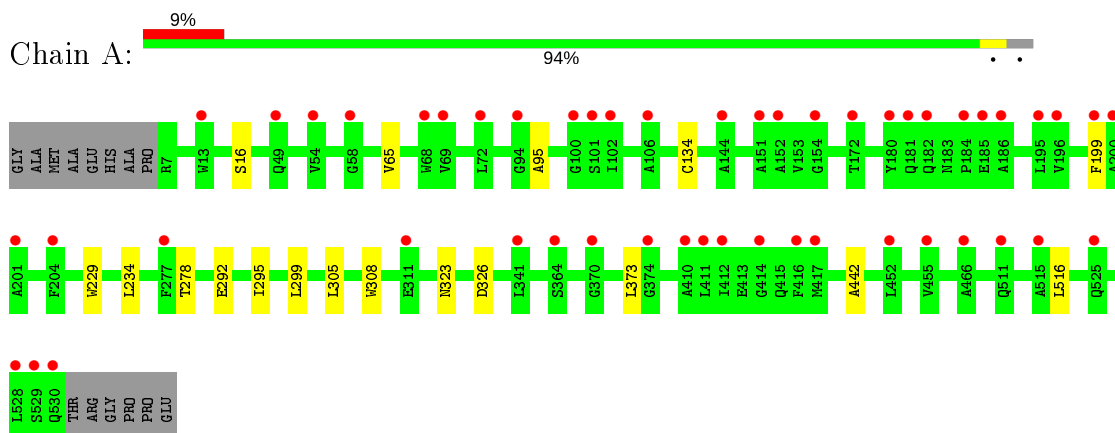
- Molecule 4 is water.

Mol	Chain	Residues	Atoms		ZeroOcc	AltConf
4	A	212	Total 212	O 212	0	0
4	B	253	Total 253	O 253	0	0
4	C	274	Total 274	O 274	0	0

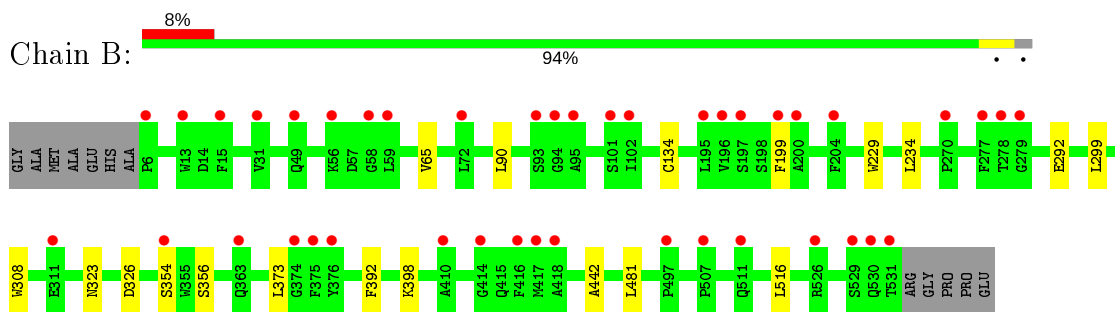
3 Residue-property plots [i](#)

These plots are drawn for all protein, RNA and DNA chains in the entry. The first graphic for a chain summarises the proportions of the various outlier classes displayed in the second graphic. The second graphic shows the sequence view annotated by issues in geometry and electron density. Residues are color-coded according to the number of geometric quality criteria for which they contain at least one outlier: green = 0, yellow = 1, orange = 2 and red = 3 or more. A red dot above a residue indicates a poor fit to the electron density ($RSRZ > 2$). Stretches of 2 or more consecutive residues without any outlier are shown as a green connector. Residues present in the sample, but not in the model, are shown in grey.

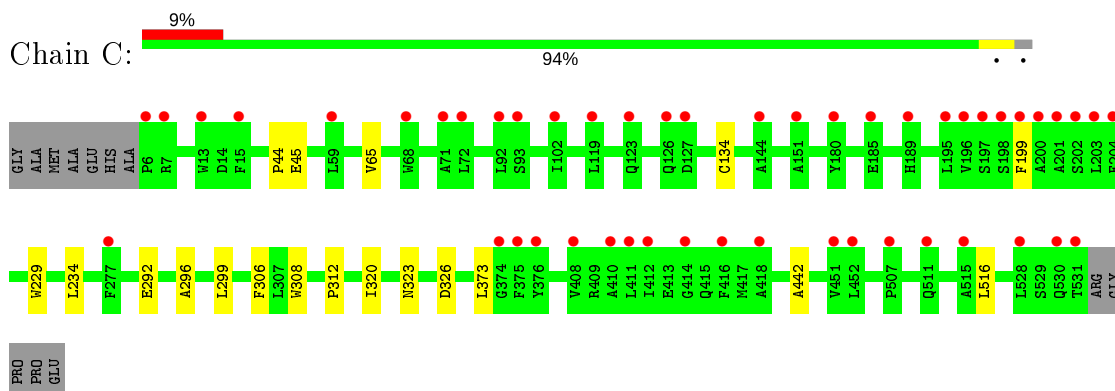
- Molecule 1: XYLULOSE KINASE



- Molecule 1: XYLULOSE KINASE



- Molecule 1: XYLULOSE KINASE



4 Data and refinement statistics

Property	Value	Source
Space group	P 32	Depositor
Cell constants a, b, c, α , β , γ	102.11Å 102.11Å 159.10Å 90.00° 90.00° 120.00°	Depositor
Resolution (Å)	28.98 – 1.98 28.98 – 1.98	Depositor EDS
% Data completeness (in resolution range)	99.0 (28.98-1.98) 99.0 (28.98-1.98)	Depositor EDS
R_{merge}	0.13	Depositor
R_{sym}	(Not available)	Depositor
$\langle I/\sigma(I) \rangle$ ¹	1.43 (at 1.98Å)	Xtriage
Refinement program	BUSTER 2.11.1	Depositor
R, R_{free}	0.172 , 0.192 0.179 , 0.198	Depositor DCC
R_{free} test set	6406 reflections (5.01%)	wwPDB-VP
Wilson B-factor (Å ²)	37.3	Xtriage
Anisotropy	0.272	Xtriage
Bulk solvent k_{sol} (e/Å ³), B_{sol} (Å ²)	0.41 , 51.9	EDS
L-test for twinning ²	$\langle L \rangle = 0.49$, $\langle L^2 \rangle = 0.32$	Xtriage
Estimated twinning fraction	0.005 for -h,-k,l 0.034 for h,-h-k,-l 0.018 for -k,-h,-l	Xtriage
F_o, F_c correlation	0.97	EDS
Total number of atoms	24196	wwPDB-VP
Average B, all atoms (Å ²)	48.0	wwPDB-VP

Xtriage's analysis on translational NCS is as follows: *The largest off-origin peak in the Patterson function is 18.73% of the height of the origin peak. No significant pseudotranslation is detected.*

¹ Intensities estimated from amplitudes.

² Theoretical values of $\langle |L| \rangle$, $\langle L^2 \rangle$ for acentric reflections are 0.5, 0.333 respectively for untwinned datasets, and 0.375, 0.2 for perfectly twinned datasets.

5 Model quality [i](#)

5.1 Standard geometry [i](#)

Bond lengths and bond angles in the following residue types are not validated in this section: 5FX, EDO

The Z score for a bond length (or angle) is the number of standard deviations the observed value is removed from the expected value. A bond length (or angle) with $|Z| > 5$ is considered an outlier worth inspection. RMSZ is the root-mean-square of all Z scores of the bond lengths (or angles).

Mol	Chain	Bond lengths		Bond angles	
		RMSZ	# Z >5	RMSZ	# Z >5
1	A	0.50	0/4069	0.64	0/5534
1	B	0.50	0/4124	0.64	0/5605
1	C	0.53	0/4065	0.64	0/5529
All	All	0.51	0/12258	0.64	0/16668

There are no bond length outliers.

There are no bond angle outliers.

There are no chirality outliers.

There are no planarity outliers.

5.2 Too-close contacts [i](#)

In the following table, the Non-H and H(model) columns list the number of non-hydrogen atoms and hydrogen atoms in the chain respectively. The H(added) column lists the number of hydrogen atoms added and optimized by MolProbity. The Clashes column lists the number of clashes within the asymmetric unit, whereas Symm-Clashes lists symmetry related clashes.

Mol	Chain	Non-H	H(model)	H(added)	Clashes	Symm-Clashes
1	A	3964	3806	3801	8	0
1	B	4007	3839	3844	11	0
1	C	3971	3803	3824	10	0
2	A	10	9	9	0	0
2	B	10	9	9	0	0
2	C	10	9	9	0	0
3	C	4	6	6	0	0
4	A	212	0	0	0	0
4	B	253	0	0	0	0
4	C	274	0	0	0	0
All	All	12715	11481	11502	27	0

The all-atom clashscore is defined as the number of clashes found per 1000 atoms (including hydrogen atoms). The all-atom clashscore for this structure is 1.

All (27) close contacts within the same asymmetric unit are listed below, sorted by their clash magnitude.

Atom-1	Atom-2	Interatomic distance (Å)	Clash overlap (Å)
1:A:295:ILE:HD11	1:A:305:LEU:HD11	1.81	0.63
1:A:65:VAL:HB	1:A:134:CYS:SG	2.55	0.46
1:B:65:VAL:HB	1:B:134:CYS:SG	2.56	0.45
1:A:95:ALA:HA	1:A:278:THR:O	2.17	0.45
1:A:373:LEU:HD21	1:A:516:LEU:HD11	1.99	0.45
1:B:354:SER:HB2	1:C:44:PRO:HG2	1.98	0.45
1:C:373:LEU:HD21	1:C:516:LEU:HD11	1.99	0.45
1:C:229:TRP:HB3	1:C:234:LEU:HD11	2.00	0.44
1:C:299:LEU:HD13	1:C:442:ALA:HB3	2.01	0.43
1:C:65:VAL:HB	1:C:134:CYS:SG	2.59	0.43
1:B:373:LEU:HD21	1:B:516:LEU:HD11	2.00	0.43
1:C:323:ASN:HB3	1:C:326:ASP:O	2.19	0.42
1:B:90:LEU:HB3	1:B:481:LEU:HD21	2.02	0.42
1:B:229:TRP:HB3	1:B:234:LEU:HD11	2.02	0.42
1:A:299:LEU:HD13	1:A:442:ALA:HB3	2.03	0.41
1:B:356:SER:HB2	1:C:45:GLU:OE2	2.20	0.41
1:B:392:PHE:CE2	1:B:398:LYS:HG2	2.56	0.41
1:B:90:LEU:CB	1:B:481:LEU:HD21	2.51	0.41
1:A:323:ASN:HB3	1:A:326:ASP:O	2.21	0.41
1:A:229:TRP:HB3	1:A:234:LEU:HD11	2.03	0.41
1:C:292:GLU:HA	1:C:308:TRP:CD1	2.56	0.41
1:C:312:PRO:HB3	1:C:320:ILE:HG21	2.03	0.41
1:B:299:LEU:HD13	1:B:442:ALA:HB3	2.02	0.40
1:B:292:GLU:HA	1:B:308:TRP:CD1	2.56	0.40
1:C:296:ALA:HB3	1:C:306:PHE:HB2	2.03	0.40
1:A:292:GLU:HA	1:A:308:TRP:CD1	2.56	0.40
1:B:323:ASN:HB3	1:B:326:ASP:O	2.21	0.40

There are no symmetry-related clashes.

5.3 Torsion angles [i](#)

5.3.1 Protein backbone [i](#)

In the following table, the Percentiles column shows the percent Ramachandran outliers of the chain as a percentile score with respect to all X-ray entries followed by that with respect to entries of similar resolution.

The Analysed column shows the number of residues for which the backbone conformation was analysed, and the total number of residues.

Mol	Chain	Analysed	Favoured	Allowed	Outliers	Percentiles	
1	A	524/538 (97%)	516 (98%)	8 (2%)	0	100	100
1	B	528/538 (98%)	522 (99%)	6 (1%)	0	100	100
1	C	524/538 (97%)	517 (99%)	7 (1%)	0	100	100
All	All	1576/1614 (98%)	1555 (99%)	21 (1%)	0	100	100

There are no Ramachandran outliers to report.

5.3.2 Protein sidechains [i](#)

In the following table, the Percentiles column shows the percent sidechain outliers of the chain as a percentile score with respect to all X-ray entries followed by that with respect to entries of similar resolution.

The Analysed column shows the number of residues for which the sidechain conformation was analysed, and the total number of residues.

Mol	Chain	Analysed	Rotameric	Outliers	Percentiles	
1	A	419/440 (95%)	417 (100%)	2 (0%)	88	87
1	B	428/440 (97%)	427 (100%)	1 (0%)	93	93
1	C	419/440 (95%)	418 (100%)	1 (0%)	93	93
All	All	1266/1320 (96%)	1262 (100%)	4 (0%)	92	92

All (4) residues with a non-rotameric sidechain are listed below:

Mol	Chain	Res	Type
1	A	16	SER
1	A	199	PHE
1	B	199	PHE
1	C	199	PHE

Some sidechains can be flipped to improve hydrogen bonding and reduce clashes. There are no such sidechains identified.

5.3.3 RNA [i](#)

There are no RNA molecules in this entry.

5.4 Non-standard residues in protein, DNA, RNA chains [i](#)

There are no non-standard protein/DNA/RNA residues in this entry.

5.5 Carbohydrates [i](#)

There are no carbohydrates in this entry.

5.6 Ligand geometry [i](#)

4 ligands are modelled in this entry.

In the following table, the Counts columns list the number of bonds (or angles) for which Mogul statistics could be retrieved, the number of bonds (or angles) that are observed in the model and the number of bonds (or angles) that are defined in the Chemical Component Dictionary. The Link column lists molecule types, if any, to which the group is linked. The Z score for a bond length (or angle) is the number of standard deviations the observed value is removed from the expected value. A bond length (or angle) with $|Z| > 2$ is considered an outlier worth inspection. RMSZ is the root-mean-square of all Z scores of the bond lengths (or angles).

Mol	Type	Chain	Res	Link	Bond lengths			Bond angles		
					Counts	RMSZ	# Z > 2	Counts	RMSZ	# Z > 2
2	5FX	B	1532	-	7,9,9	0.87	1 (14%)	4,11,11	0.86	0
2	5FX	C	1532	-	7,9,9	1.28	2 (28%)	4,11,11	1.31	0
2	5FX	A	1531	-	7,9,9	1.11	1 (14%)	4,11,11	1.20	0
3	EDO	C	1533	-	3,3,3	0.72	0	2,2,2	0.32	0

In the following table, the Chirals column lists the number of chiral outliers, the number of chiral centers analysed, the number of these observed in the model and the number defined in the Chemical Component Dictionary. Similar counts are reported in the Torsion and Rings columns. '-' means no outliers of that kind were identified.

Mol	Type	Chain	Res	Link	Chirals	Torsions	Rings
2	5FX	B	1532	-	-	0/11/12/12	-
2	5FX	C	1532	-	-	0/11/12/12	-
2	5FX	A	1531	-	-	0/11/12/12	-
3	EDO	C	1533	-	-	0/1/1/1	-

All (4) bond length outliers are listed below:

Mol	Chain	Res	Type	Atoms	Z	Observed(Å)	Ideal(Å)
2	C	1532	5FX	C1-C2	2.39	1.57	1.50
2	C	1532	5FX	C5-C4	2.38	1.55	1.51

Continued on next page...

Continued from previous page...

Mol	Chain	Res	Type	Atoms	Z	Observed(Å)	Ideal(Å)
2	B	1532	5FX	C5-C4	2.20	1.54	1.51
2	A	1531	5FX	C5-C4	2.07	1.54	1.51

There are no bond angle outliers.

There are no chirality outliers.

There are no torsion outliers.

There are no ring outliers.

No monomer is involved in short contacts.

5.7 Other polymers [i](#)

There are no such residues in this entry.

5.8 Polymer linkage issues [i](#)

There are no chain breaks in this entry.

6 Fit of model and data

6.1 Protein, DNA and RNA chains

In the following table, the column labelled ‘#RSRZ> 2’ contains the number (and percentage) of RSRZ outliers, followed by percent RSRZ outliers for the chain as percentile scores relative to all X-ray entries and entries of similar resolution. The OWAB column contains the minimum, median, 95th percentile and maximum values of the occupancy-weighted average B-factor per residue. The column labelled ‘Q< 0.9’ lists the number of (and percentage) of residues with an average occupancy less than 0.9.

Mol	Chain	Analysed	<RSRZ>	#RSRZ>2	OWAB(Å ²)	Q<0.9
1	A	524/538 (97%)	0.51	50 (9%) 8 9	34, 51, 75, 91	0
1	B	526/538 (97%)	0.35	42 (7%) 12 14	32, 45, 65, 112	0
1	C	526/538 (97%)	0.36	49 (9%) 8 10	30, 44, 66, 103	0
All	All	1576/1614 (97%)	0.41	141 (8%) 9 10	30, 46, 70, 112	0

All (141) RSRZ outliers are listed below:

Mol	Chain	Res	Type	RSRZ
1	B	531	THR	6.9
1	A	528	LEU	6.4
1	B	6	PRO	5.4
1	A	529	SER	4.7
1	C	6	PRO	4.6
1	C	200	ALA	4.4
1	C	196	VAL	4.4
1	C	531	THR	4.4
1	C	412	ILE	4.3
1	A	416	PHE	4.3
1	C	180	TYR	4.1
1	C	416	PHE	4.1
1	A	410	ALA	4.1
1	C	204	PHE	4.1
1	C	199	PHE	3.8
1	C	411	LEU	3.7
1	B	196	VAL	3.6
1	A	414	GLY	3.6
1	A	311	GLU	3.6
1	A	411	LEU	3.6
1	A	182	GLN	3.5
1	C	511	GLN	3.5
1	C	59	LEU	3.5

Continued on next page...

Continued from previous page...

Mol	Chain	Res	Type	RSRZ
1	A	199	PHE	3.5
1	B	497	PRO	3.5
1	A	184	PRO	3.5
1	A	511	GLN	3.5
1	A	72	LEU	3.5
1	B	200	ALA	3.4
1	A	69	VAL	3.4
1	B	530	GLN	3.4
1	A	412	ILE	3.3
1	B	195	LEU	3.3
1	B	374	GLY	3.3
1	B	199	PHE	3.3
1	A	195	LEU	3.3
1	B	414	GLY	3.2
1	C	203	LEU	3.2
1	C	72	LEU	3.1
1	A	374	GLY	3.1
1	C	126	GLN	3.1
1	B	102	ILE	3.0
1	C	414	GLY	3.0
1	C	451	VAL	2.9
1	A	100	GLY	2.9
1	A	154	GLY	2.9
1	B	507	PRO	2.9
1	A	152	ALA	2.9
1	A	201	ALA	2.9
1	A	200	ALA	2.9
1	B	277	PHE	2.9
1	B	416	PHE	2.9
1	B	56	LYS	2.8
1	C	375	PHE	2.8
1	B	15	PHE	2.8
1	C	13	TRP	2.8
1	C	68	TRP	2.8
1	A	106	ALA	2.7
1	C	410	ALA	2.7
1	B	94	GLY	2.7
1	A	185	GLU	2.7
1	A	102	ILE	2.7
1	B	511	GLN	2.7
1	A	68	TRP	2.7
1	B	58	GLY	2.7

Continued on next page...

Continued from previous page...

Mol	Chain	Res	Type	RSRZ
1	C	374	GLY	2.7
1	B	197	SER	2.7
1	C	195	LEU	2.7
1	B	417	MET	2.6
1	C	144	ALA	2.6
1	A	58	GLY	2.6
1	A	144	ALA	2.6
1	C	15	PHE	2.6
1	B	376	TYR	2.6
1	C	418	ALA	2.6
1	A	277	PHE	2.6
1	C	408	VAL	2.6
1	C	151	ALA	2.6
1	C	189	HIS	2.6
1	B	59	LEU	2.5
1	C	93	SER	2.5
1	C	507	PRO	2.5
1	C	197	SER	2.5
1	C	277	PHE	2.5
1	A	204	PHE	2.5
1	C	198	SER	2.5
1	B	410	ALA	2.4
1	B	270	PRO	2.4
1	B	526	ARG	2.4
1	A	370	GLY	2.4
1	C	7	ARG	2.4
1	B	95	ALA	2.4
1	A	364	SER	2.4
1	C	452	LEU	2.4
1	C	515	ALA	2.4
1	A	54	VAL	2.4
1	C	185	GLU	2.3
1	C	530	GLN	2.3
1	A	525	GLN	2.3
1	A	151	ALA	2.3
1	A	466	ALA	2.3
1	C	376	TYR	2.3
1	B	529	SER	2.3
1	A	530	GLN	2.3
1	C	123	GLN	2.3
1	C	201	ALA	2.3
1	C	127	ASP	2.2

Continued on next page...

Continued from previous page...

Mol	Chain	Res	Type	RSRZ
1	C	71	ALA	2.2
1	A	13	TRP	2.2
1	C	528	LEU	2.2
1	A	186	ALA	2.2
1	A	452	LEU	2.2
1	A	180	TYR	2.2
1	B	375	PHE	2.2
1	B	418	ALA	2.2
1	A	455	VAL	2.2
1	A	94	GLY	2.2
1	B	93	SER	2.1
1	B	204	PHE	2.1
1	A	196	VAL	2.1
1	A	172	THR	2.1
1	B	279	GLY	2.1
1	B	49	GLN	2.1
1	B	278	THR	2.1
1	B	101	SER	2.1
1	A	181	GLN	2.1
1	A	417	MET	2.1
1	B	31	VAL	2.1
1	C	102	ILE	2.1
1	A	341	LEU	2.1
1	B	72	LEU	2.1
1	C	119	LEU	2.1
1	B	311	GLU	2.0
1	A	101	SER	2.0
1	C	202	SER	2.0
1	C	92	LEU	2.0
1	A	49	GLN	2.0
1	B	363	GLN	2.0
1	A	515	ALA	2.0
1	B	13	TRP	2.0
1	B	354	SER	2.0

6.2 Non-standard residues in protein, DNA, RNA chains

There are no non-standard protein/DNA/RNA residues in this entry.

6.3 Carbohydrates [i](#)

There are no carbohydrates in this entry.

6.4 Ligands [i](#)

In the following table, the Atoms column lists the number of modelled atoms in the group and the number defined in the chemical component dictionary. The B-factors column lists the minimum, median, 95th percentile and maximum values of B factors of atoms in the group. The column labelled 'Q< 0.9' lists the number of atoms with occupancy less than 0.9.

Mol	Type	Chain	Res	Atoms	RSCC	RSR	B-factors(\AA^2)	Q<0.9
3	EDO	C	1533	4/4	0.95	0.12	43,47,48,48	0
2	5FX	C	1532	10/10	0.97	0.08	33,38,43,44	0
2	5FX	A	1531	10/10	0.98	0.05	32,34,37,37	0
2	5FX	B	1532	10/10	0.98	0.10	33,35,38,39	0

6.5 Other polymers [i](#)

There are no such residues in this entry.