



Full wwPDB X-ray Structure Validation Report ⓘ

Sep 25, 2023 – 03:52 PM EDT

PDB ID : 6BBL
Title : Crystal structure of the a-96Gln MoFe protein variant in the presence of the substrate acetylene
Authors : Zadvornyy, O.A.; Keable, S.M.; Vertemara, J.; Eilers, B.J.; Karamatullah, D.; Rasmussen, A.J.; De Gioia, L.; Zampella, G.; Seefeldt, L.C.; Peters, J.W.
Deposited on : 2017-10-18
Resolution : 1.68 Å(reported)

This is a Full wwPDB X-ray Structure Validation Report for a publicly released PDB entry.

We welcome your comments at validation@mail.wwpdb.org

A user guide is available at

<https://www.wwpdb.org/validation/2017/XrayValidationReportHelp>

with specific help available everywhere you see the ⓘ symbol.

The types of validation reports are described at

<http://www.wwpdb.org/validation/2017/FAQs#types>.

The following versions of software and data (see [references ⓘ](#)) were used in the production of this report:

MolProbity : 4.02b-467
Mogul : 1.8.5 (274361), CSD as541be (2020)
Xtrriage (Phenix) : 1.13
EDS : 2.35.1
buster-report : 1.1.7 (2018)
Percentile statistics : 20191225.v01 (using entries in the PDB archive December 25th 2019)
Refmac : 5.8.0158
CCP4 : 7.0.044 (Gargrove)
Ideal geometry (proteins) : Engh & Huber (2001)
Ideal geometry (DNA, RNA) : Parkinson et al. (1996)
Validation Pipeline (wwPDB-VP) : 2.35.1

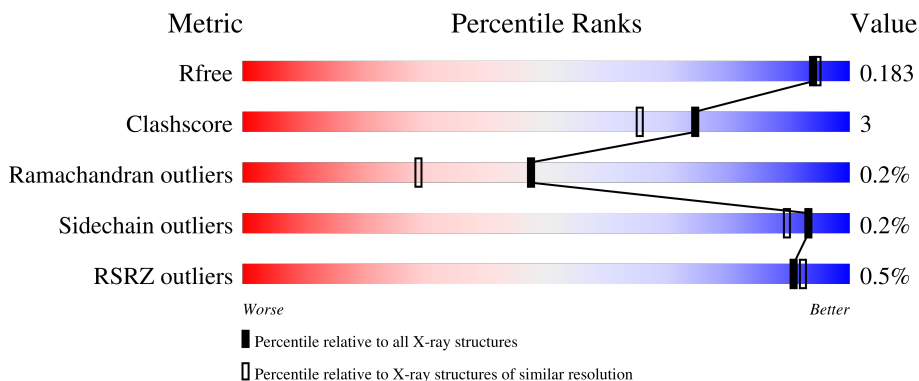
1 Overall quality at a glance

The following experimental techniques were used to determine the structure:

X-RAY DIFFRACTION

The reported resolution of this entry is 1.68 Å.

Percentile scores (ranging between 0-100) for global validation metrics of the entry are shown in the following graphic. The table shows the number of entries on which the scores are based.



Metric	Whole archive (#Entries)	Similar resolution (#Entries, resolution range(Å))
R_{free}	130704	6780 (1.70-1.66)
Clashscore	141614	7310 (1.70-1.66)
Ramachandran outliers	138981	7173 (1.70-1.66)
Sidechain outliers	138945	7172 (1.70-1.66)
RSRZ outliers	127900	6661 (1.70-1.66)

The table below summarises the geometric issues observed across the polymeric chains and their fit to the electron density. The red, orange, yellow and green segments of the lower bar indicate the fraction of residues that contain outliers for ≥ 3 , 2, 1 and 0 types of geometric quality criteria respectively. A grey segment represents the fraction of residues that are not modelled. The numeric value for each fraction is indicated below the corresponding segment, with a dot representing fractions $\leq 5\%$. The upper red bar (where present) indicates the fraction of residues that have poor fit to the electron density. The numeric value is given above the bar.

Mol	Chain	Length	Quality of chain
1	A	492	 90% 7%
1	C	492	 88% 9%
2	B	523	 96%
2	D	523	 96%

The following table lists non-polymeric compounds, carbohydrate monomers and non-standard residues in protein, DNA, RNA chains that are outliers for geometric or electron-density-fit criteria:

Mol	Type	Chain	Res	Chirality	Geometry	Clashes	Electron density
3	C2H	A	501	-	X	-	-
3	C2H	C	501	-	X	X	-

2 Entry composition [i](#)

There are 10 unique types of molecules in this entry. The entry contains 33891 atoms, of which 15669 are hydrogens and 0 are deuteriums.

In the tables below, the ZeroOcc column contains the number of atoms modelled with zero occupancy, the AltConf column contains the number of residues with at least one atom in alternate conformation and the Trace column contains the number of residues modelled with at most 2 atoms.

- Molecule 1 is a protein called Nitrogenase molybdenum-iron protein alpha chain.

Mol	Chain	Residues	Atoms						ZeroOcc	AltConf	Trace
			Total	C	H	N	O	S			
1	A	477	7525	2412	3731	645	711	26	0	2	0
1	C	477	7525	2412	3731	645	711	26	0	2	0

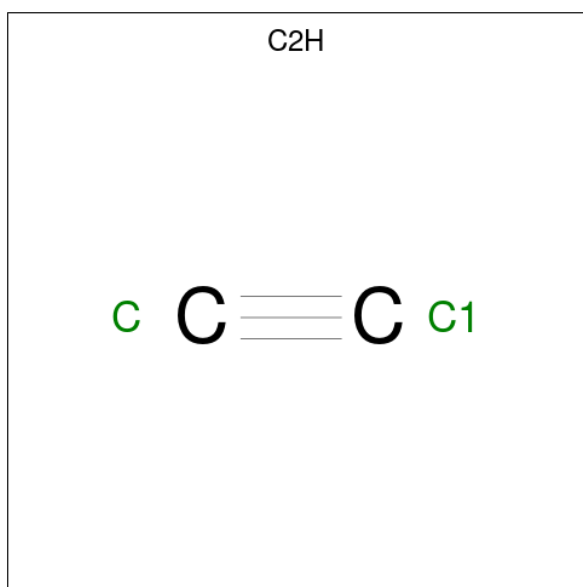
There are 2 discrepancies between the modelled and reference sequences:

Chain	Residue	Modelled	Actual	Comment	Reference
A	96	GLN	ARG	variant	UNP P07328
C	96	GLN	ARG	variant	UNP P07328

- Molecule 2 is a protein called Nitrogenase molybdenum-iron protein beta chain.

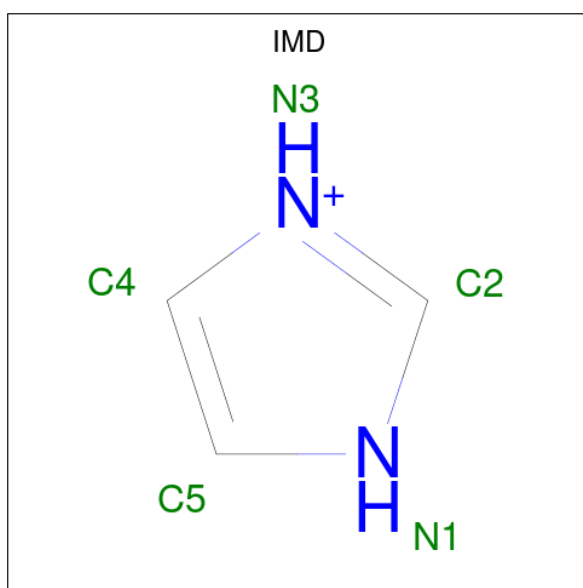
Mol	Chain	Residues	Atoms						ZeroOcc	AltConf	Trace
			Total	C	H	N	O	S			
2	B	522	8262	2666	4088	705	775	28	0	0	0
2	D	522	8262	2666	4088	705	775	28	0	0	0

- Molecule 3 is acetylene (three-letter code: C2H) (formula: C₂H₂).



Mol	Chain	Residues	Atoms			ZeroOcc	AltConf
3	A	1	Total	C	H	0	0
			4	2	2		
3	C	1	Total	C	H	0	0
			4	2	2		

- Molecule 4 is IMIDAZOLE (three-letter code: IMD) (formula: C₃H₅N₂).



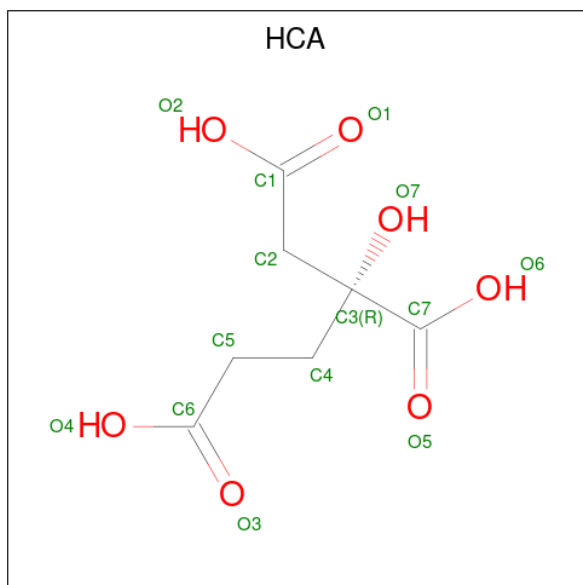
Mol	Chain	Residues	Atoms				ZeroOcc	AltConf
4	A	1	Total	C	H	N	0	0
			10	3	5	2		
4	C	1	Total	C	H	N	0	0
			10	3	5	2		

Continued on next page...

Continued from previous page...

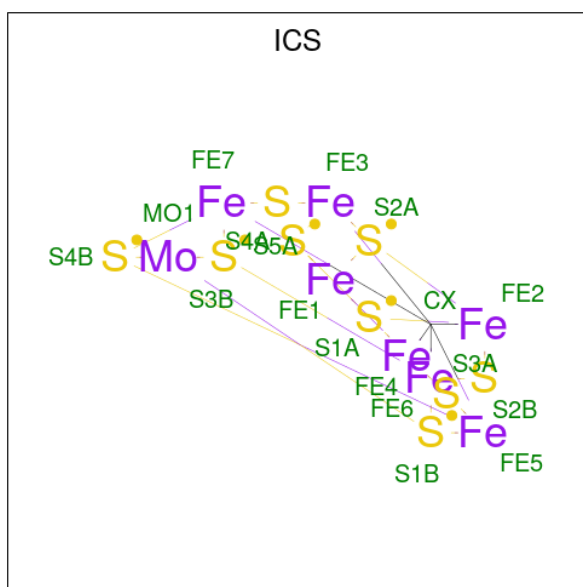
Mol	Chain	Residues	Atoms				ZeroOcc	AltConf
			Total	C	H	N		
4	D	1	10	3	5	2	0	0

- Molecule 5 is 3-HYDROXY-3-CARBOXY-ADIPIC ACID (three-letter code: HCA) (formula: $C_7H_{10}O_7$).



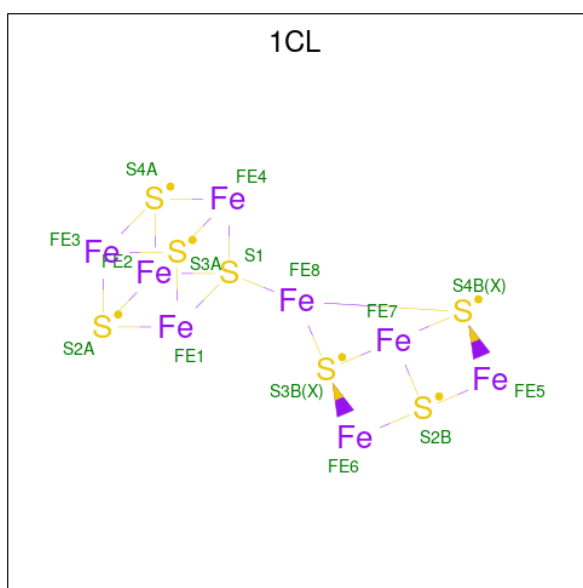
Mol	Chain	Residues	Atoms				ZeroOcc	AltConf
			Total	C	H	O		
5	A	1	20	7	6	7	0	0
5	C	1	20	7	6	7	0	0

- Molecule 6 is iron-sulfur-molybdenum cluster with interstitial carbon (three-letter code: ICS) (formula: CFe_7MoS_9).



Mol	Chain	Residues	Atoms				ZeroOcc	AltConf	
6	A	1	Total	C	Fe	Mo	S	0	0
			18	1	7	1	9		
6	C	1	Total	C	Fe	Mo	S	0	0
			18	1	7	1	9		

- Molecule 7 is FE(8)-S(7) CLUSTER, OXIDIZED (three-letter code: 1CL) (formula: Fe₈S₇).



Mol	Chain	Residues	Atoms		ZeroOcc	AltConf	
7	A	1	Total	Fe	S	0	0
			15	8	7		
7	C	1	Total	Fe	S	0	0
			15	8	7		

- Molecule 8 is FE (III) ION (three-letter code: FE) (formula: Fe).

Mol	Chain	Residues	Atoms		ZeroOcc	AltConf
8	B	2	Total	Fe	0	0
			2	2		

- Molecule 9 is MAGNESIUM ION (three-letter code: MG) (formula: Mg).

Mol	Chain	Residues	Atoms		ZeroOcc	AltConf
9	B	1	Total	Mg	0	0
			1	1		

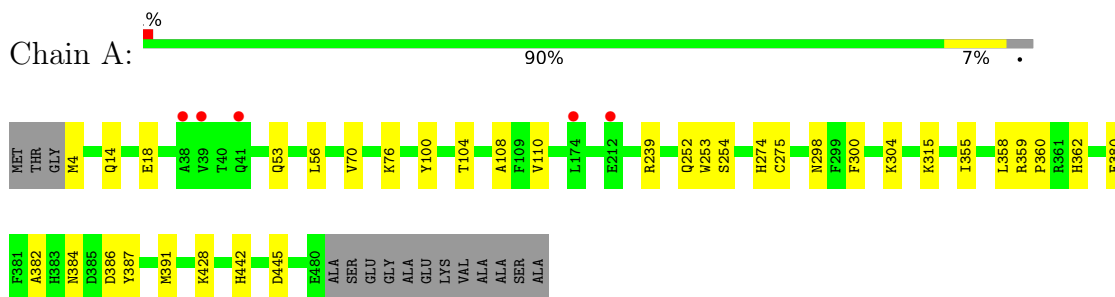
- Molecule 10 is water.

Mol	Chain	Residues	Atoms		ZeroOcc	AltConf
10	A	455	Total	O	0	0
			455	455		
10	B	620	Total	O	0	0
			620	620		
10	C	483	Total	O	0	0
			483	483		
10	D	612	Total	O	0	0
			612	612		

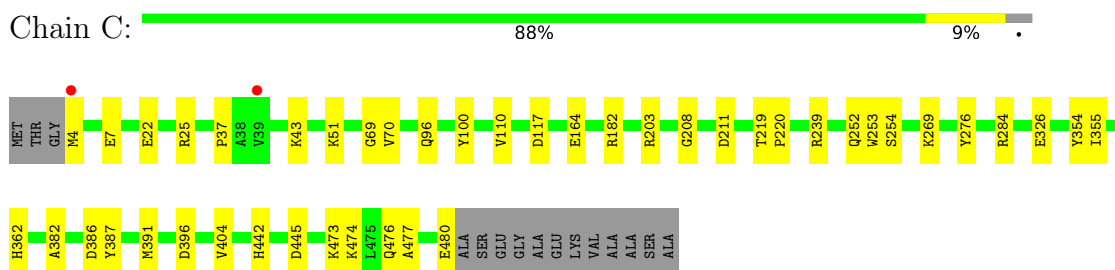
3 Residue-property plots [i](#)

These plots are drawn for all protein, RNA, DNA and oligosaccharide chains in the entry. The first graphic for a chain summarises the proportions of the various outlier classes displayed in the second graphic. The second graphic shows the sequence view annotated by issues in geometry and electron density. Residues are color-coded according to the number of geometric quality criteria for which they contain at least one outlier: green = 0, yellow = 1, orange = 2 and red = 3 or more. A red dot above a residue indicates a poor fit to the electron density ($RSRZ > 2$). Stretches of 2 or more consecutive residues without any outlier are shown as a green connector. Residues present in the sample, but not in the model, are shown in grey.

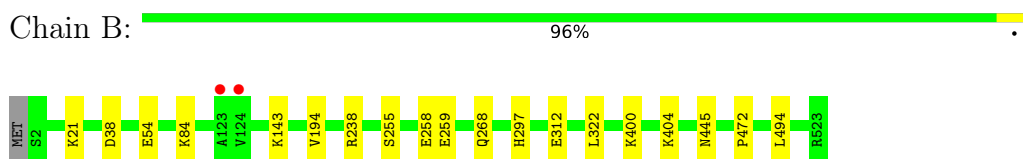
- Molecule 1: Nitrogenase molybdenum-iron protein alpha chain



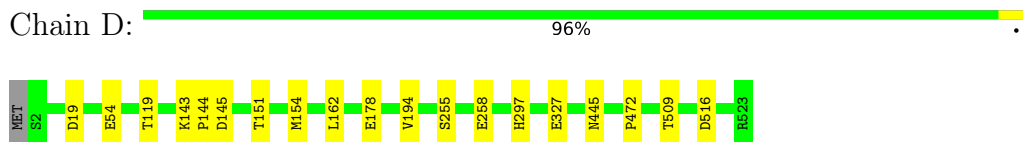
- Molecule 1: Nitrogenase molybdenum-iron protein alpha chain



- Molecule 2: Nitrogenase molybdenum-iron protein beta chain



- Molecule 2: Nitrogenase molybdenum-iron protein beta chain



4 Data and refinement statistics

Property	Value	Source
Space group	P 1 21 1	Depositor
Cell constants a, b, c, α , β , γ	76.78Å 128.25Å 107.27Å 90.00° 109.11° 90.00°	Depositor
Resolution (Å)	39.76 – 1.68 49.92 – 1.68	Depositor EDS
% Data completeness (in resolution range)	91.9 (39.76-1.68) 91.9 (49.92-1.68)	Depositor EDS
R_{merge}	0.09	Depositor
R_{sym}	(Not available)	Depositor
$\langle I/\sigma(I) \rangle$ ¹	1.47 (at 1.68Å)	Xtrriage
Refinement program	PHENIX (DEV_2880: ???)	Depositor
R, R_{free}	0.151 , 0.185 0.151 , 0.183	Depositor DCC
R_{free} test set	10163 reflections (4.97%)	wwPDB-VP
Wilson B-factor (Å ²)	18.5	Xtrriage
Anisotropy	0.378	Xtrriage
Bulk solvent k_{sol} (e/Å ³), B_{sol} (Å ²)	0.39 , 48.0	EDS
L-test for twinning ²	$\langle L \rangle = 0.48$, $\langle L^2 \rangle = 0.31$	Xtrriage
Estimated twinning fraction	0.029 for h,-k,-h-l	Xtrriage
F_o, F_c correlation	0.96	EDS
Total number of atoms	33891	wwPDB-VP
Average B, all atoms (Å ²)	25.0	wwPDB-VP

Xtrriage's analysis on translational NCS is as follows: *The largest off-origin peak in the Patterson function is 6.12% of the height of the origin peak. No significant pseudotranslation is detected.*

¹Intensities estimated from amplitudes.

²Theoretical values of $\langle |L| \rangle$, $\langle L^2 \rangle$ for acentric reflections are 0.5, 0.333 respectively for untwinned datasets, and 0.375, 0.2 for perfectly twinned datasets.

5 Model quality [i](#)

5.1 Standard geometry [i](#)

Bond lengths and bond angles in the following residue types are not validated in this section: IMD, FE, ICS, C2H, HCA, MG, 1CL

The Z score for a bond length (or angle) is the number of standard deviations the observed value is removed from the expected value. A bond length (or angle) with $|Z| > 5$ is considered an outlier worth inspection. RMSZ is the root-mean-square of all Z scores of the bond lengths (or angles).

Mol	Chain	Bond lengths		Bond angles	
		RMSZ	# Z >5	RMSZ	# Z >5
1	A	0.47	0/3889	0.60	0/5245
1	C	0.46	0/3889	0.61	0/5245
2	B	0.44	0/4280	0.60	0/5786
2	D	0.45	0/4280	0.61	1/5786 (0.0%)
All	All	0.45	0/16338	0.61	1/22062 (0.0%)

There are no bond length outliers.

All (1) bond angle outliers are listed below:

Mol	Chain	Res	Type	Atoms	Z	Observed(°)	Ideal(°)
2	D	19	ASP	CB-CG-OD1	6.49	124.14	118.30

There are no chirality outliers.

There are no planarity outliers.

5.2 Too-close contacts [i](#)

In the following table, the Non-H and H(model) columns list the number of non-hydrogen atoms and hydrogen atoms in the chain respectively. The H(added) column lists the number of hydrogen atoms added and optimized by MolProbity. The Clashes column lists the number of clashes within the asymmetric unit, whereas Symm-Clashes lists symmetry-related clashes.

Mol	Chain	Non-H	H(model)	H(added)	Clashes	Symm-Clashes
1	A	3794	3731	3720	32	0
1	C	3794	3731	3720	36	0
2	B	4174	4088	4088	19	0
2	D	4174	4088	4088	12	0
3	A	2	2	0	1	0
3	C	2	2	0	2	0

Continued on next page...

Continued from previous page...

Mol	Chain	Non-H	H(model)	H(added)	Clashes	Symm-Clashes
4	A	5	5	5	0	0
4	C	5	5	5	2	0
4	D	5	5	5	0	0
5	A	14	6	6	2	0
5	C	14	6	6	4	0
6	A	18	0	0	0	0
6	C	18	0	0	0	0
7	A	15	0	0	0	0
7	C	15	0	0	0	0
8	B	2	0	0	0	0
9	B	1	0	0	0	0
10	A	455	0	0	10	0
10	B	620	0	0	10	1
10	C	483	0	0	20	4
10	D	612	0	0	5	2
All	All	18222	15669	15643	101	4

The all-atom clashscore is defined as the number of clashes found per 1000 atoms (including hydrogen atoms). The all-atom clashscore for this structure is 3.

All (101) close contacts within the same asymmetric unit are listed below, sorted by their clash magnitude.

Atom-1	Atom-2	Interatomic distance (Å)	Clash overlap (Å)
2:B:238:ARG:HG3	2:B:258:GLU:OE1	1.45	1.16
2:B:238:ARG:CG	2:B:258:GLU:OE1	1.96	1.12
2:B:312:GLU:OE2	10:B:701:HOH:O	1.81	0.99
1:C:326:GLU:OE1	10:C:601:HOH:O	1.80	0.97
2:B:21:LYS:NZ	10:B:703:HOH:O	2.01	0.93
1:C:22:GLU:OE1	1:C:25:ARG:NH1	2.06	0.88
4:C:504:IMD:N1	10:C:603:HOH:O	2.05	0.87
1:A:384:ASN:OD1	10:A:601:HOH:O	1.91	0.86
2:B:238:ARG:HG2	2:B:258:GLU:OE1	1.74	0.84
2:B:38:ASP:OD1	10:B:702:HOH:O	1.98	0.81
1:C:117:ASP:O	10:C:602:HOH:O	2.00	0.79
2:D:327:GLU:OE2	10:D:701:HOH:O	2.01	0.79
2:D:145:ASP:OD2	10:D:702:HOH:O	2.02	0.78
1:C:480:GLU:HB2	10:C:604:HOH:O	1.87	0.74
1:C:4:MET:N	10:C:608:HOH:O	2.21	0.72
1:C:182:ARG:HD3	10:C:640:HOH:O	1.91	0.71
2:B:84:LYS:NZ	10:B:706:HOH:O	2.21	0.70
2:B:54:GLU:OE2	10:B:704:HOH:O	2.10	0.69

Continued on next page...

Continued from previous page...

Atom-1	Atom-2	Interatomic distance (Å)	Clash overlap (Å)
2:D:178:GLU:OE1	10:D:703:HOH:O	2.11	0.68
1:C:473:LYS:NZ	10:C:611:HOH:O	2.26	0.67
1:A:18:GLU:OE1	10:A:602:HOH:O	2.14	0.65
1:C:269:LYS:NZ	10:C:613:HOH:O	2.31	0.62
2:B:238:ARG:HE	2:B:258:GLU:CD	2.03	0.61
1:C:477:ALA:O	10:C:604:HOH:O	2.16	0.60
1:C:7:GLU:OE2	10:C:605:HOH:O	2.16	0.60
1:A:380:GLU:HG3	10:A:610:HOH:O	2.03	0.59
1:A:428:LYS:HE3	10:A:880:HOH:O	2.03	0.58
1:C:164:GLU:OE1	10:C:606:HOH:O	2.17	0.58
1:C:203:ARG:NH2	10:C:617:HOH:O	2.37	0.58
1:A:4:MET:N	10:A:609:HOH:O	2.35	0.57
1:C:477:ALA:N	10:C:604:HOH:O	2.37	0.57
1:A:274:HIS:CE1	1:A:362:HIS:CE1	2.93	0.56
1:A:298:ASN:HA	1:A:362:HIS:HE2	1.71	0.56
1:C:208:GLY:HA2	1:C:211:ASP:OD1	2.06	0.56
1:A:298:ASN:CG	1:A:362:HIS:CD2	2.80	0.55
1:C:100:TYR:CE1	1:C:110:VAL:HB	2.42	0.55
2:D:54:GLU:OE1	10:D:704:HOH:O	2.18	0.54
1:A:304:LYS:NZ	10:A:615:HOH:O	2.41	0.53
1:C:354:TYR:CZ	1:C:404:VAL:HG12	2.44	0.53
1:A:358:LEU:HD21	1:A:362:HIS:ND1	2.24	0.53
1:C:51:LYS:NZ	2:D:119:THR:OG1	2.42	0.53
2:B:259:GLU:OE2	10:B:705:HOH:O	2.19	0.53
4:C:504:IMD:C2	10:C:603:HOH:O	2.49	0.52
2:B:268:GLN:HG3	10:B:1010:HOH:O	2.08	0.52
1:C:387:TYR:O	1:C:391:MET:HG3	2.10	0.52
1:C:476:GLN:HG3	10:C:604:HOH:O	2.10	0.52
2:D:54:GLU:OE2	10:D:705:HOH:O	2.19	0.50
1:C:476:GLN:CG	10:C:604:HOH:O	2.60	0.49
1:A:14:GLN:HG2	10:A:617:HOH:O	2.12	0.49
1:A:442:HIS:HB3	5:A:503:HCA:O6	2.13	0.48
1:A:387:TYR:O	1:A:391:MET:HG3	2.14	0.48
1:C:37:PRO:HD3	1:C:396:ASP:OD1	2.14	0.48
2:B:238:ARG:HE	2:B:258:GLU:CG	2.27	0.47
1:A:100:TYR:CE1	1:A:110:VAL:HB	2.50	0.47
1:A:53:GLN:HB2	1:A:56:LEU:HD12	1.97	0.47
2:B:143:LYS:HE3	10:B:871:HOH:O	2.14	0.47
1:A:359:ARG:HA	1:A:362:HIS:HB3	1.96	0.47
2:D:194:VAL:HB	2:D:297:HIS:CG	2.50	0.47
1:C:382:ALA:HB1	1:C:386:ASP:HB2	1.97	0.47

Continued on next page...

Continued from previous page...

Atom-1	Atom-2	Interatomic distance (Å)	Clash overlap (Å)
1:C:70:VAL:HG13	3:C:501:C2H:C1	2.45	0.47
1:C:182:ARG:CZ	10:C:640:HOH:O	2.63	0.46
1:A:4:MET:N	10:A:625:HOH:O	2.48	0.46
1:C:442:HIS:HB3	5:C:502:HCA:O5	2.16	0.46
5:A:503:HCA:O2	5:A:503:HCA:O7	2.34	0.46
1:A:300:PHE:HD2	1:A:362:HIS:CD2	2.34	0.45
1:C:253:TRP:HA	1:C:254:SER:HA	1.80	0.45
1:A:239:ARG:HD2	1:A:252:GLN:OE1	2.16	0.45
1:C:43:LYS:CE	10:C:636:HOH:O	2.64	0.45
1:C:480:GLU:OE2	10:C:607:HOH:O	2.20	0.45
2:B:194:VAL:HB	2:B:297:HIS:CG	2.52	0.44
1:C:182:ARG:NH1	10:C:640:HOH:O	2.50	0.44
1:C:69:GLY:HA3	3:C:501:C2H:C	2.48	0.44
1:C:239:ARG:HD2	1:C:252:GLN:OE1	2.17	0.44
1:A:298:ASN:ND2	1:A:362:HIS:HD2	2.16	0.43
5:C:502:HCA:O1	5:C:502:HCA:O7	2.35	0.43
1:C:219:THR:HB	1:C:220:PRO:HD2	1.99	0.43
2:D:509:THR:O	2:D:516:ASP:HA	2.18	0.42
1:A:359:ARG:N	1:A:360:PRO:CD	2.82	0.42
1:A:4:MET:C	10:A:609:HOH:O	2.56	0.42
1:A:70:VAL:HG13	3:A:501:C2H:C1	2.49	0.42
1:A:382:ALA:HB1	1:A:386:ASP:HB2	2.00	0.42
1:A:76:LYS:O	1:A:108:ALA:HA	2.20	0.42
1:A:274:HIS:NE2	1:A:362:HIS:CE1	2.88	0.42
1:C:96:GLN:HG2	5:C:502:HCA:O6	2.20	0.42
1:A:358:LEU:HD21	1:A:362:HIS:CE1	2.55	0.42
2:B:322:LEU:HD21	1:C:474:LYS:HB3	2.02	0.42
1:C:276:TYR:OH	1:C:284:ARG:NH2	2.52	0.42
1:C:442:HIS:CG	5:C:502:HCA:H52	2.55	0.42
1:A:104:THR:HA	1:A:108:ALA:O	2.20	0.41
1:A:275:CYS:HA	1:A:358:LEU:HD22	2.01	0.41
2:D:445:ASN:HB2	2:D:472:PRO:O	2.19	0.41
2:D:143:LYS:N	2:D:144:PRO:CD	2.83	0.41
1:A:315:LYS:HD3	10:A:943:HOH:O	2.20	0.41
2:D:154:MET:HE2	2:D:154:MET:HB3	1.91	0.41
2:D:151:THR:HG23	2:D:162:LEU:HD11	2.01	0.41
1:A:298:ASN:CG	1:A:362:HIS:HD2	2.20	0.41
2:B:400:LYS:HG3	10:B:869:HOH:O	2.21	0.41
2:B:445:ASN:HB2	2:B:472:PRO:O	2.19	0.41
1:A:253:TRP:HA	1:A:254:SER:HA	1.85	0.41
2:B:404:LYS:NZ	10:B:719:HOH:O	2.40	0.41

Continued on next page...

Continued from previous page...

Atom-1	Atom-2	Interatomic distance (Å)	Clash overlap (Å)
2:B:494:LEU:HD23	2:B:494:LEU:C	2.41	0.40

All (4) symmetry-related close contacts are listed below. The label for Atom-2 includes the symmetry operator and encoded unit-cell translations to be applied.

Atom-1	Atom-2	Interatomic distance (Å)	Clash overlap (Å)
10:C:1013:HOH:O	10:C:1045:HOH:O[2_555]	1.88	0.32
10:B:1260:HOH:O	10:C:867:HOH:O[2_545]	1.99	0.21
10:C:967:HOH:O	10:D:872:HOH:O[1_655]	2.00	0.20
10:C:958:HOH:O	10:D:866:HOH:O[2_545]	2.18	0.02

5.3 Torsion angles [i](#)

5.3.1 Protein backbone [i](#)

In the following table, the Percentiles column shows the percent Ramachandran outliers of the chain as a percentile score with respect to all X-ray entries followed by that with respect to entries of similar resolution.

The Analysed column shows the number of residues for which the backbone conformation was analysed, and the total number of residues.

Mol	Chain	Analysed	Favoured	Allowed	Outliers	Percentiles
1	A	477/492 (97%)	458 (96%)	18 (4%)	1 (0%)	47 29
1	C	477/492 (97%)	459 (96%)	17 (4%)	1 (0%)	47 29
2	B	520/523 (99%)	510 (98%)	9 (2%)	1 (0%)	47 29
2	D	520/523 (99%)	507 (98%)	12 (2%)	1 (0%)	47 29
All	All	1994/2030 (98%)	1934 (97%)	56 (3%)	4 (0%)	47 29

All (4) Ramachandran outliers are listed below:

Mol	Chain	Res	Type
2	D	255	SER
2	B	255	SER
1	A	355	ILE
1	C	355	ILE

5.3.2 Protein sidechains [i](#)

In the following table, the Percentiles column shows the percent sidechain outliers of the chain as a percentile score with respect to all X-ray entries followed by that with respect to entries of similar resolution.

The Analysed column shows the number of residues for which the sidechain conformation was analysed, and the total number of residues.

Mol	Chain	Analysed	Rotameric	Outliers	Percentiles	
1	A	409/415 (99%)	408 (100%)	1 (0%)	93	89
1	C	409/415 (99%)	407 (100%)	2 (0%)	88	83
2	B	454/455 (100%)	454 (100%)	0	100	100
2	D	454/455 (100%)	453 (100%)	1 (0%)	93	89
All	All	1726/1740 (99%)	1722 (100%)	4 (0%)	93	89

All (4) residues with a non-rotameric sidechain are listed below:

Mol	Chain	Res	Type
1	A	445	ASP
1	C	362	HIS
1	C	445	ASP
2	D	258	GLU

Sometimes sidechains can be flipped to improve hydrogen bonding and reduce clashes. All (1) such sidechains are listed below:

Mol	Chain	Res	Type
1	A	362	HIS

5.3.3 RNA [i](#)

There are no RNA molecules in this entry.

5.4 Non-standard residues in protein, DNA, RNA chains [i](#)

There are no non-standard protein/DNA/RNA residues in this entry.

5.5 Carbohydrates [i](#)

There are no monosaccharides in this entry.

5.6 Ligand geometry

Of 14 ligands modelled in this entry, 3 are monoatomic - leaving 11 for Mogul analysis.

In the following table, the Counts columns list the number of bonds (or angles) for which Mogul statistics could be retrieved, the number of bonds (or angles) that are observed in the model and the number of bonds (or angles) that are defined in the Chemical Component Dictionary. The Link column lists molecule types, if any, to which the group is linked. The Z score for a bond length (or angle) is the number of standard deviations the observed value is removed from the expected value. A bond length (or angle) with $|Z| > 2$ is considered an outlier worth inspection. RMSZ is the root-mean-square of all Z scores of the bond lengths (or angles).

Mol	Type	Chain	Res	Link	Bond lengths			Bond angles		
					Counts	RMSZ	# Z > 2	Counts	RMSZ	# Z > 2
5	HCA	A	503	-	13,13,13	1.61	4 (30%)	14,18,18	2.53	5 (35%)
4	IMD	A	502	-	3,5,5	0.47	0	4,5,5	0.58	0
4	IMD	C	504	-	3,5,5	0.67	0	4,5,5	0.83	0
7	1CL	A	505	1,2	0,22,22	-	-	-	-	-
3	C2H	C	501	-	1,1,1	2.22	1 (100%)	-	-	-
3	C2H	A	501	-	1,1,1	2.22	1 (100%)	-	-	-
6	ICS	A	504	1	18,30,30	6.80	12 (66%)	-	-	-
7	1CL	C	505	1,2	0,22,22	-	-	-	-	-
5	HCA	C	502	-	13,13,13	1.08	2 (15%)	14,18,18	1.26	2 (14%)
6	ICS	C	503	1	18,30,30	6.59	12 (66%)	-	-	-
4	IMD	D	601	-	3,5,5	0.42	0	4,5,5	0.62	0

In the following table, the Chirals column lists the number of chiral outliers, the number of chiral centers analysed, the number of these observed in the model and the number defined in the Chemical Component Dictionary. Similar counts are reported in the Torsion and Rings columns. '-' means no outliers of that kind were identified.

Mol	Type	Chain	Res	Link	Chirals	Torsions	Rings
5	HCA	A	503	-	-	7/17/17/17	-
4	IMD	A	502	-	-	-	0/1/1/1
4	IMD	C	504	-	-	-	0/1/1/1
7	1CL	A	505	1,2	-	-	0/10/8/8
7	1CL	C	505	1,2	-	-	0/10/8/8
5	HCA	C	502	-	-	5/17/17/17	-
4	IMD	D	601	-	-	-	0/1/1/1

All (32) bond length outliers are listed below:

Mol	Chain	Res	Type	Atoms	Z	Observed(Å)	Ideal(Å)
6	A	504	ICS	S1B-FE6	-9.08	2.10	2.32
6	A	504	ICS	S3B-FE7	-8.98	2.10	2.32
6	C	503	ICS	S4B-FE7	-8.97	2.10	2.32
6	A	504	ICS	S4B-FE7	-8.91	2.10	2.32
6	C	503	ICS	S2A-FE2	-8.83	2.10	2.32
6	A	504	ICS	S1A-FE2	-8.82	2.10	2.32
6	C	503	ICS	S3B-FE6	-8.61	2.11	2.32
6	A	504	ICS	S4A-FE3	-8.45	2.11	2.32
6	A	504	ICS	S2A-FE2	-8.45	2.11	2.32
6	C	503	ICS	S1B-FE6	-8.41	2.11	2.32
6	A	504	ICS	S3B-FE6	-8.34	2.12	2.32
6	C	503	ICS	S1A-FE2	-8.33	2.12	2.32
6	C	503	ICS	S3B-FE7	-8.17	2.12	2.32
6	A	504	ICS	S1A-FE4	-8.04	2.12	2.32
6	C	503	ICS	S4A-FE3	-7.95	2.12	2.32
6	A	504	ICS	S4B-FE5	-7.88	2.13	2.32
6	C	503	ICS	S1B-FE5	-7.84	2.13	2.32
6	C	503	ICS	S4B-FE5	-7.80	2.13	2.32
6	C	503	ICS	S2A-FE3	-7.79	2.13	2.32
6	A	504	ICS	S4A-FE4	-7.74	2.13	2.32
6	A	504	ICS	S1B-FE5	-7.69	2.13	2.32
6	C	503	ICS	S1A-FE4	-7.20	2.14	2.32
6	A	504	ICS	S2A-FE3	-6.94	2.15	2.32
6	C	503	ICS	S4A-FE4	-6.27	2.17	2.32
5	A	503	HCA	O6-C7	-3.04	1.18	1.30
5	A	503	HCA	O5-C7	2.88	1.31	1.22
5	A	503	HCA	O1-C1	2.83	1.31	1.22
5	A	503	HCA	O2-C1	-2.78	1.21	1.30
5	C	502	HCA	O3-C6	2.75	1.31	1.22
5	C	502	HCA	O4-C6	-2.52	1.22	1.30
3	C	501	C2H	C1-C	2.22	1.37	1.19
3	A	501	C2H	C1-C	2.22	1.37	1.19

All (7) bond angle outliers are listed below:

Mol	Chain	Res	Type	Atoms	Z	Observed(°)	Ideal(°)
5	A	503	HCA	O5-C7-C3	-5.95	113.83	122.25
5	A	503	HCA	O6-C7-C3	5.60	122.77	113.05
5	C	502	HCA	C4-C5-C6	3.35	120.33	112.75
5	A	503	HCA	O1-C1-C2	-2.77	114.84	122.94
5	A	503	HCA	C4-C5-C6	2.64	118.73	112.75
5	A	503	HCA	O2-C1-C2	2.25	121.56	114.35
5	C	502	HCA	O3-C6-C5	-2.24	115.88	123.08

There are no chirality outliers.

All (12) torsion outliers are listed below:

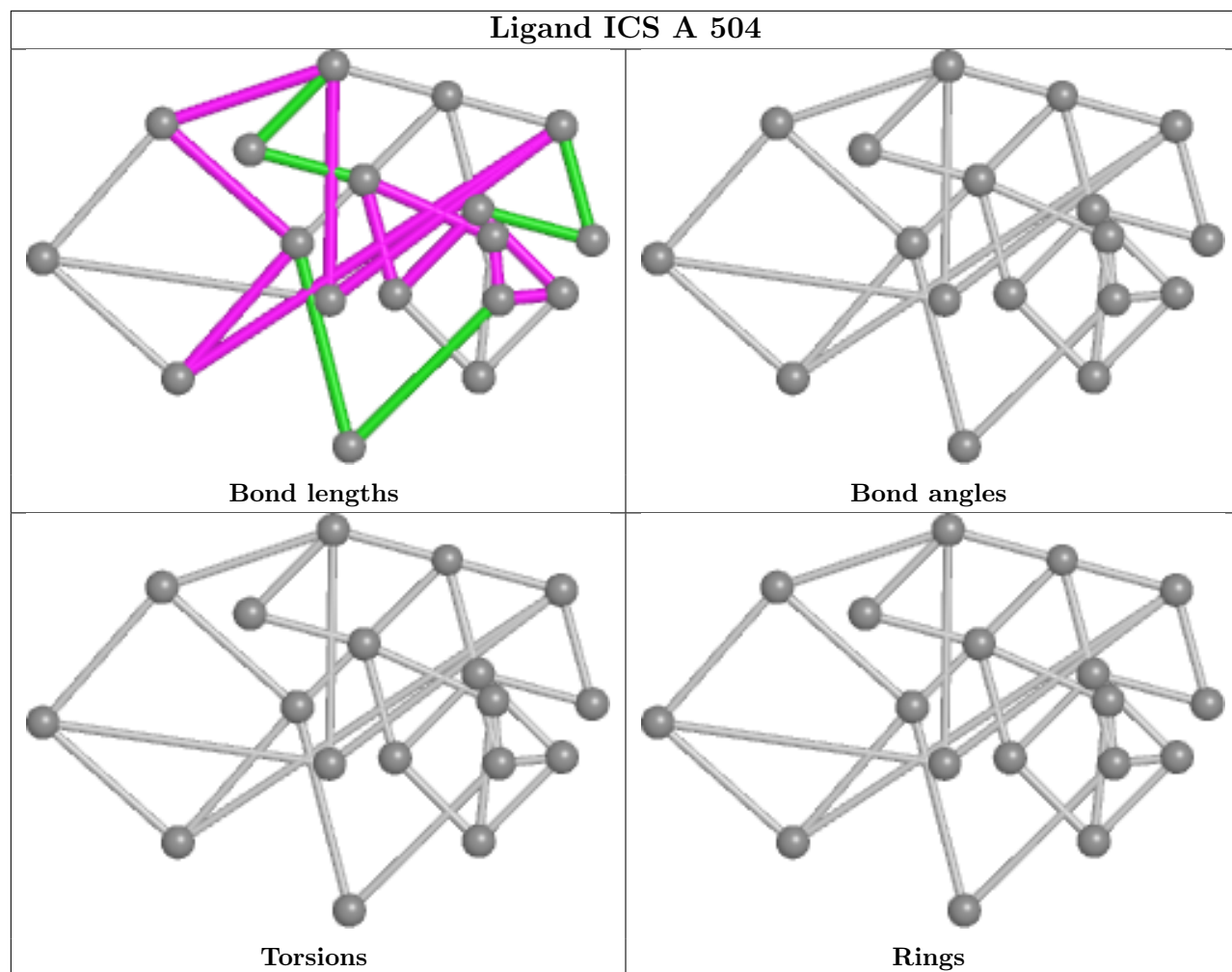
Mol	Chain	Res	Type	Atoms
5	A	503	HCA	C2-C3-C4-C5
5	A	503	HCA	O7-C3-C4-C5
5	C	502	HCA	C2-C3-C4-C5
5	C	502	HCA	O7-C3-C4-C5
5	A	503	HCA	C7-C3-C4-C5
5	C	502	HCA	C7-C3-C4-C5
5	C	502	HCA	C1-C2-C3-C7
5	A	503	HCA	O1-C1-C2-C3
5	A	503	HCA	C1-C2-C3-C4
5	C	502	HCA	C1-C2-C3-C4
5	A	503	HCA	O2-C1-C2-C3
5	A	503	HCA	C1-C2-C3-C7

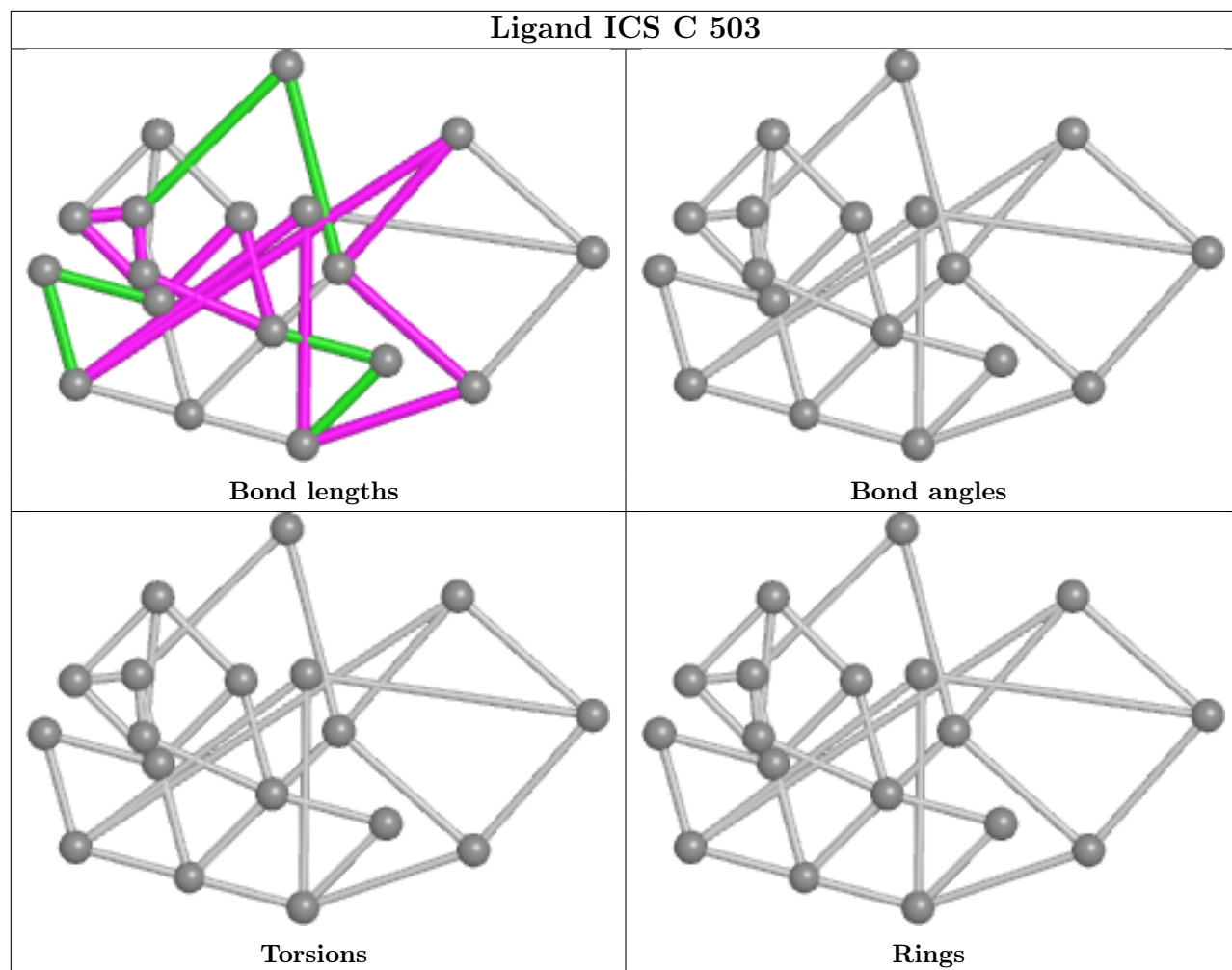
There are no ring outliers.

5 monomers are involved in 11 short contacts:

Mol	Chain	Res	Type	Clashes	Symm-Clashes
5	A	503	HCA	2	0
4	C	504	IMD	2	0
3	C	501	C2H	2	0
3	A	501	C2H	1	0
5	C	502	HCA	4	0

The following is a two-dimensional graphical depiction of Mogul quality analysis of bond lengths, bond angles, torsion angles, and ring geometry for all instances of the Ligand of Interest. In addition, ligands with molecular weight > 250 and outliers as shown on the validation Tables will also be included. For torsion angles, if less than 5% of the Mogul distribution of torsion angles is within 10 degrees of the torsion angle in question, then that torsion angle is considered an outlier. Any bond that is central to one or more torsion angles identified as an outlier by Mogul will be highlighted in the graph. For rings, the root-mean-square deviation (RMSD) between the ring in question and similar rings identified by Mogul is calculated over all ring torsion angles. If the average RMSD is greater than 60 degrees and the minimal RMSD between the ring in question and any Mogul-identified rings is also greater than 60 degrees, then that ring is considered an outlier. The outliers are highlighted in purple. The color gray indicates Mogul did not find sufficient equivalents in the CSD to analyse the geometry.





5.7 Other polymers [i](#)

There are no such residues in this entry.

5.8 Polymer linkage issues [i](#)

There are no chain breaks in this entry.

6 Fit of model and data [i](#)

6.1 Protein, DNA and RNA chains [i](#)

In the following table, the column labelled ‘#RSRZ> 2’ contains the number (and percentage) of RSRZ outliers, followed by percent RSRZ outliers for the chain as percentile scores relative to all X-ray entries and entries of similar resolution. The OWAB column contains the minimum, median, 95th percentile and maximum values of the occupancy-weighted average B-factor per residue. The column labelled ‘Q< 0.9’ lists the number of (and percentage) of residues with an average occupancy less than 0.9.

Mol	Chain	Analysed	<RSRZ>	#RSRZ>2	OWAB(Å ²)	Q<0.9
1	A	477/492 (96%)	-0.38	5 (1%) 82 85	16, 21, 36, 55	9 (1%)
1	C	477/492 (96%)	-0.50	2 (0%) 92 93	15, 21, 38, 50	1 (0%)
2	B	522/523 (99%)	-0.55	2 (0%) 92 93	15, 20, 30, 49	3 (0%)
2	D	522/523 (99%)	-0.51	0 100 100	14, 19, 29, 39	3 (0%)
All	All	1998/2030 (98%)	-0.49	9 (0%) 91 92	14, 20, 34, 55	16 (0%)

All (9) RSRZ outliers are listed below:

Mol	Chain	Res	Type	RSRZ
1	A	39	VAL	4.9
2	B	124	VAL	4.2
1	A	174	LEU	3.6
1	A	38	ALA	3.5
1	C	4	MET	2.9
1	C	39	VAL	2.8
2	B	123	ALA	2.5
1	A	41	GLN	2.2
1	A	212	GLU	2.1

6.2 Non-standard residues in protein, DNA, RNA chains [i](#)

There are no non-standard protein/DNA/RNA residues in this entry.

6.3 Carbohydrates [i](#)

There are no monosaccharides in this entry.

6.4 Ligands

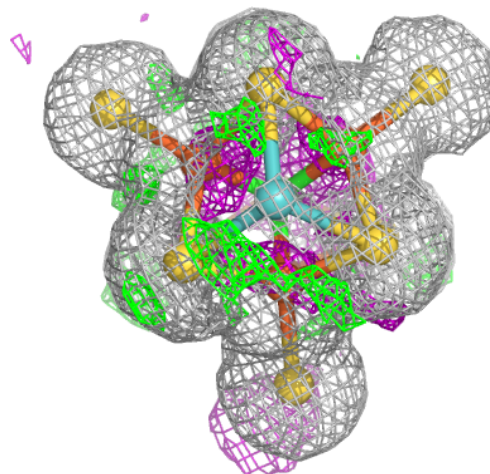
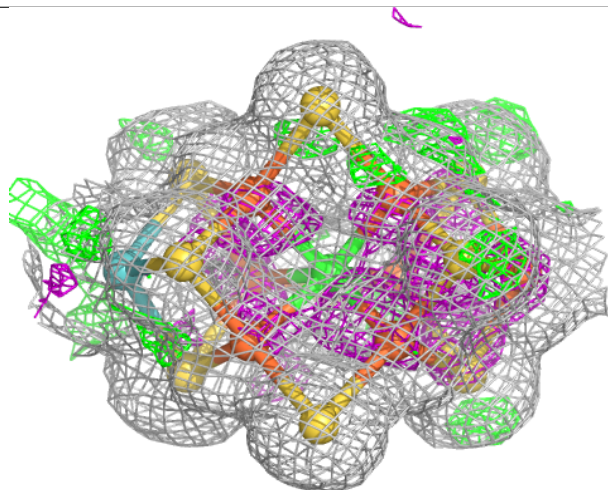
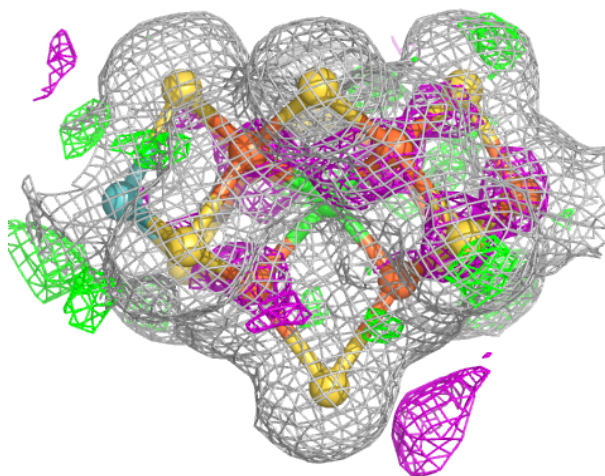
In the following table, the Atoms column lists the number of modelled atoms in the group and the number defined in the chemical component dictionary. The B-factors column lists the minimum, median, 95th percentile and maximum values of B factors of atoms in the group. The column labelled 'Q< 0.9' lists the number of atoms with occupancy less than 0.9.

Mol	Type	Chain	Res	Atoms	RSCC	RSR	B-factors(Å ²)	Q<0.9
4	IMD	A	502	5/5	0.86	0.25	42,50,60,61	0
3	C2H	A	501	2/2	0.89	0.15	22,27,30,36	0
9	MG	B	602	1/1	0.91	0.15	42,42,42,42	0
4	IMD	D	601	5/5	0.93	0.07	39,44,52,53	0
3	C2H	C	501	2/2	0.94	0.13	24,26,29,31	0
5	HCA	C	502	14/14	0.94	0.10	16,20,23,23	0
4	IMD	C	504	5/5	0.94	0.19	16,30,46,47	0
5	HCA	A	503	14/14	0.96	0.09	18,22,27,27	0
7	1CL	A	505	15/15	0.97	0.08	14,16,26,28	0
7	1CL	C	505	15/15	0.98	0.08	14,16,26,28	0
6	ICS	C	503	18/18	0.99	0.07	11,17,18,18	1
6	ICS	A	504	18/18	0.99	0.06	10,17,19,19	3
8	FE	B	603	1/1	1.00	0.02	21,21,21,21	0
8	FE	B	601	1/1	1.00	0.04	18,18,18,18	0

The following is a graphical depiction of the model fit to experimental electron density of all instances of the Ligand of Interest. In addition, ligands with molecular weight > 250 and outliers as shown on the geometry validation Tables will also be included. Each fit is shown from different orientation to approximate a three-dimensional view.

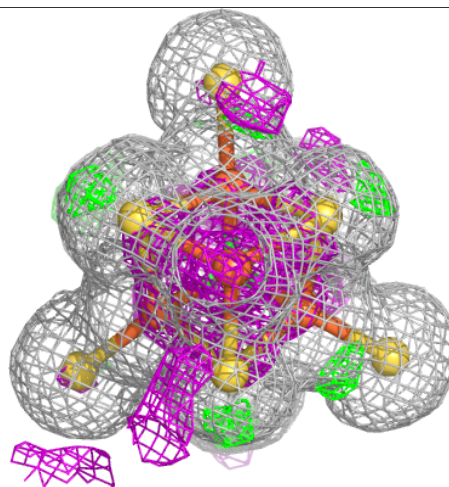
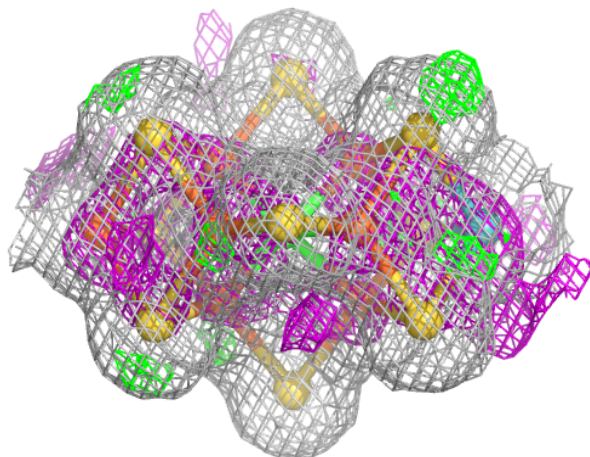
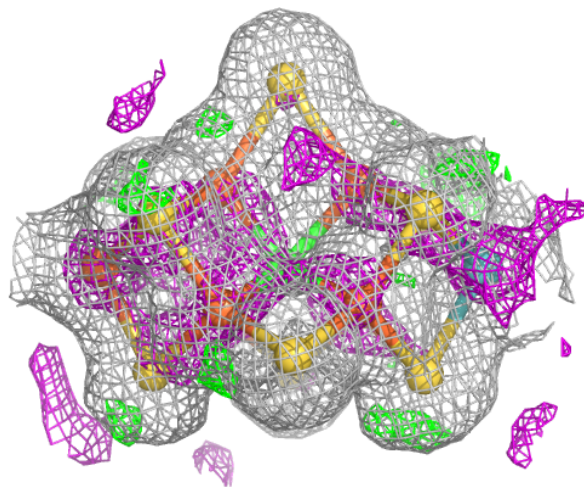
Electron density around ICS C 503:

$2mF_o-DF_c$ (at 0.7 rmsd) in gray
 mF_o-DF_c (at 3 rmsd) in purple (negative)
and green (positive)



Electron density around ICS A 504:

$2mF_o-DF_c$ (at 0.7 rmsd) in gray
 mF_o-DF_c (at 3 rmsd) in purple (negative)
and green (positive)



6.5 Other polymers [i](#)

There are no such residues in this entry.