



# Full wwPDB X-ray Structure Validation Report ⓘ

Apr 10, 2023 – 07:20 PM EDT

PDB ID : 1ASJ  
Title : P1/MAHONEY POLIOVIRUS, AT CRYOGENIC TEMPERATURE  
Authors : Wien, M.W.; Curry, S.; Filman, D.J.; Hogle, J.M.  
Deposited on : 1997-08-11  
Resolution : 2.90 Å(reported)

This is a Full wwPDB X-ray Structure Validation Report for a publicly released PDB entry.

We welcome your comments at [validation@mail.wwpdb.org](mailto:validation@mail.wwpdb.org)

A user guide is available at

<https://www.wwpdb.org/validation/2017/XrayValidationReportHelp>

with specific help available everywhere you see the ⓘ symbol.

The types of validation reports are described at

<http://www.wwpdb.org/validation/2017/FAQs#types>.

---

The following versions of software and data (see [references ⓘ](#)) were used in the production of this report:

MolProbity : 4.02b-467  
Mogul : 1.8.5 (274361), CSD as541be (2020)  
Xtrriage (Phenix) : **NOT EXECUTED**  
EDS : **NOT EXECUTED**  
buster-report : 1.1.7 (2018)  
Percentile statistics : 20191225.v01 (using entries in the PDB archive December 25th 2019)  
Ideal geometry (proteins) : Engh & Huber (2001)  
Ideal geometry (DNA, RNA) : Parkinson et al. (1996)  
Validation Pipeline (wwPDB-VP) : 2.32.2

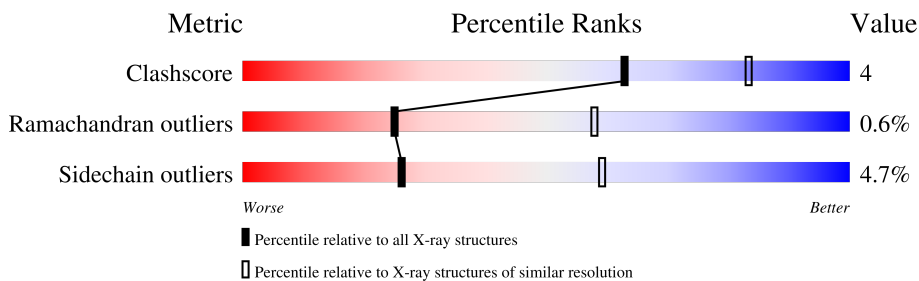
# 1 Overall quality at a glance

The following experimental techniques were used to determine the structure:

*X-RAY DIFFRACTION*

The reported resolution of this entry is 2.90 Å.

Percentile scores (ranging between 0-100) for global validation metrics of the entry are shown in the following graphic. The table shows the number of entries on which the scores are based.



Metric	Whole archive (#Entries)	Similar resolution (#Entries, resolution range(Å))
Clashscore	141614	2172 (2.90-2.90)
Ramachandran outliers	138981	2115 (2.90-2.90)
Sidechain outliers	138945	2117 (2.90-2.90)

The table below summarises the geometric issues observed across the polymeric chains and their fit to the electron density. The red, orange, yellow and green segments of the lower bar indicate the fraction of residues that contain outliers for  $\geq 3$ , 2, 1 and 0 types of geometric quality criteria respectively. A grey segment represents the fraction of residues that are not modelled. The numeric value for each fraction is indicated below the corresponding segment, with a dot representing fractions  $\leq 5\%$

Note EDS was not executed.

Mol	Chain	Length	Quality of chain
1	0	5	
2	1	302	
3	2	272	
4	3	238	
5	4	68	

## 2 Entry composition [i](#)

There are 8 unique types of molecules in this entry. The entry contains 7208 atoms, of which 0 are hydrogens and 0 are deuteriums.

In the tables below, the ZeroOcc column contains the number of atoms modelled with zero occupancy, the AltConf column contains the number of residues with at least one atom in alternate conformation and the Trace column contains the number of residues modelled with at most 2 atoms.

- Molecule 1 is a protein called P1/MAHONEY POLIOVIRUS.

Mol	Chain	Residues	Atoms				ZeroOcc	AltConf	Trace
			Total	C	N	O			
1	0	5	29	15	5	9	0	0	0

- Molecule 2 is a protein called P1/MAHONEY POLIOVIRUS.

Mol	Chain	Residues	Atoms					ZeroOcc	AltConf	Trace
			Total	C	N	O	S			
2	1	283	2222	1416	378	423	5	0	0	0

- Molecule 3 is a protein called P1/MAHONEY POLIOVIRUS.

Mol	Chain	Residues	Atoms					ZeroOcc	AltConf	Trace
			Total	C	N	O	S			
3	2	268	2085	1317	358	396	14	0	0	0

- Molecule 4 is a protein called P1/MAHONEY POLIOVIRUS.

Mol	Chain	Residues	Atoms					ZeroOcc	AltConf	Trace
			Total	C	N	O	S			
4	3	235	1834	1169	299	349	17	0	0	0

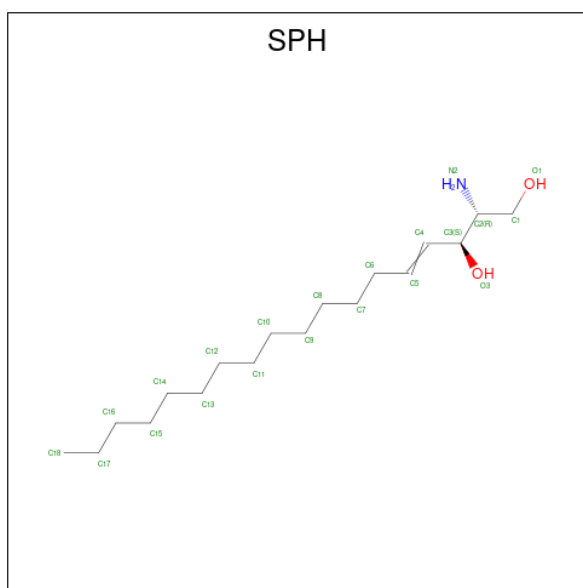
There is a discrepancy between the modelled and reference sequences:

Chain	Residue	Modelled	Actual	Comment	Reference
3	123	SER	PHE	conflict	UNP P03300

- Molecule 5 is a protein called P1/MAHONEY POLIOVIRUS.

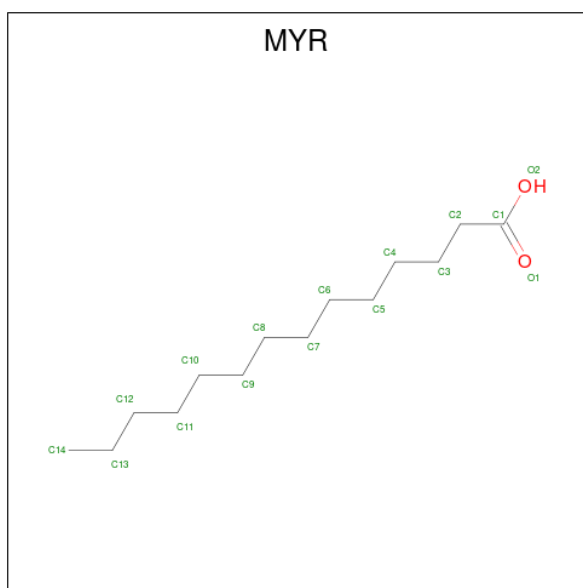
Mol	Chain	Residues	Atoms					ZeroOcc	AltConf	Trace
			Total	C	N	O	S			
5	4	60	462	286	78	97	1	0	0	0

- Molecule 6 is SPHINGOSINE (three-letter code: SPH) (formula:  $C_{18}H_{37}NO_2$ ).



Mol	Chain	Residues	Atoms			ZeroOcc	AltConf	
			Total	C	N			O
6	1	1	21	18	1	2	0	0

- Molecule 7 is MYRISTIC ACID (three-letter code: MYR) (formula:  $C_{14}H_{28}O_2$ ).



Mol	Chain	Residues	Atoms			ZeroOcc	AltConf
			Total	C	O		
7	4	1	15	14	1	0	0

- Molecule 8 is water.

Mol	Chain	Residues	Atoms	ZeroOcc	AltConf
8	0	1	Total O 1 1	0	0
8	1	180	Total O 180 180	0	0
8	2	171	Total O 171 171	0	0
8	3	143	Total O 143 143	0	0
8	4	45	Total O 45 45	0	0

### 3 Residue-property plots [i](#)

These plots are drawn for all protein, RNA, DNA and oligosaccharide chains in the entry. The first graphic for a chain summarises the proportions of the various outlier classes displayed in the second graphic. The second graphic shows the sequence view annotated by issues in geometry. Residues are color-coded according to the number of geometric quality criteria for which they contain at least one outlier: green = 0, yellow = 1, orange = 2 and red = 3 or more. Stretches of 2 or more consecutive residues without any outlier are shown as a green connector. Residues present in the sample, but not in the model, are shown in grey.


Note EDS was not executed.

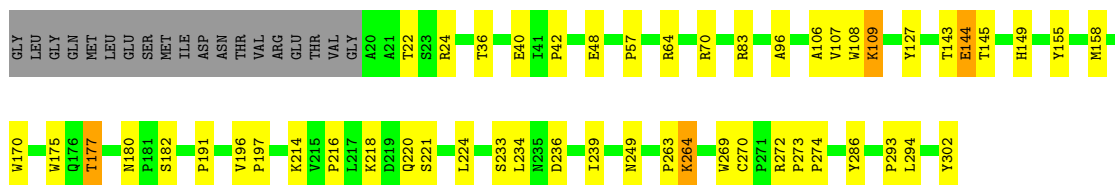
- Molecule 1: P1/MAHONEY POLIOVIRUS

Chain 0:  100%


There are no outlier residues recorded for this chain.

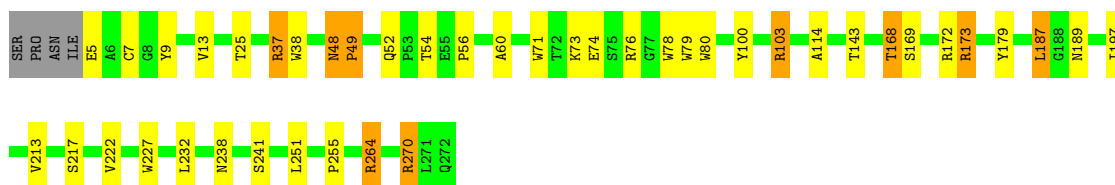
- Molecule 2: P1/MAHONEY POLIOVIRUS

Chain 1:  76% 16% • 6%




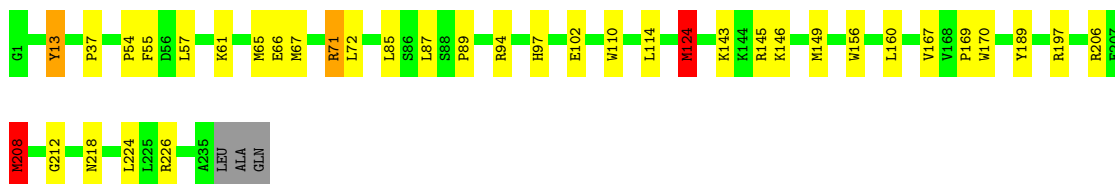
- Molecule 3: P1/MAHONEY POLIOVIRUS

Chain 2:  83% 12% ••



- Molecule 4: P1/MAHONEY POLIOVIRUS

Chain 3:  83% 14% •••



- Molecule 5: P1/MAHONEY POLIOVIRUS

Chain 4:  69% 18% • 12%



## 4 Data and refinement statistics

Xtrriage (Phenix) and EDS were not executed - this section is therefore incomplete.

Property	Value	Source
Space group	P 21 21 2	Depositor
Cell constants a, b, c, $\alpha$ , $\beta$ , $\gamma$	320.15Å 355.55Å 377.80Å 90.00° 90.00° 90.00°	Depositor
Resolution (Å)	11.00 – 2.90	Depositor
% Data completeness (in resolution range)	45.0 (11.00-2.90)	Depositor
$R_{merge}$	0.12	Depositor
$R_{sym}$	(Not available)	Depositor
Refinement program	X-PLOR 3.0	Depositor
R, $R_{free}$	0.253 , (Not available)	Depositor
Estimated twinning fraction	No twinning to report.	Xtrriage
Total number of atoms	7208	wwPDB-VP
Average B, all atoms (Å <sup>2</sup> )	15.0	wwPDB-VP



## 5 Model quality [i](#)

### 5.1 Standard geometry [i](#)

Bond lengths and bond angles in the following residue types are not validated in this section: MYR, SPH

The Z score for a bond length (or angle) is the number of standard deviations the observed value is removed from the expected value. A bond length (or angle) with  $|Z| > 5$  is considered an outlier worth inspection. RMSZ is the root-mean-square of all Z scores of the bond lengths (or angles).

Mol	Chain	Bond lengths		Bond angles	
		RMSZ	# Z  >5	RMSZ	# Z  >5
1	0	0.67	0/28	1.38	0/36
2	1	0.84	0/2285	1.51	28/3124 (0.9%)
3	2	0.82	0/2142	1.54	31/2928 (1.1%)
4	3	0.83	0/1881	1.44	19/2562 (0.7%)
5	4	0.79	0/469	1.51	4/632 (0.6%)
All	All	0.83	0/6805	1.50	82/9282 (0.9%)

There are no bond length outliers.

All (82) bond angle outliers are listed below:

Mol	Chain	Res	Type	Atoms	Z	Observed(°)	Ideal(°)
2	1	83	ARG	NE-CZ-NH2	-13.15	113.72	120.30
2	1	24	ARG	NE-CZ-NH1	10.80	125.70	120.30
2	1	83	ARG	NE-CZ-NH1	9.32	124.96	120.30
3	2	100	TYR	CB-CG-CD2	-8.99	115.60	121.00
3	2	78	TRP	CD1-CG-CD2	8.95	113.46	106.30
2	1	269	TRP	CD1-CG-CD2	8.75	113.30	106.30
3	2	227	TRP	CD1-CG-CD2	8.62	113.19	106.30
2	1	175	TRP	CD1-CG-CD2	8.57	113.16	106.30
3	2	264	ARG	NE-CZ-NH2	-8.57	116.02	120.30
3	2	79	TRP	CD1-CG-CD2	8.53	113.12	106.30
3	2	37	ARG	NE-CZ-NH1	8.44	124.52	120.30
3	2	80	TRP	CD1-CG-CD2	8.41	113.03	106.30
3	2	79	TRP	CE2-CD2-CG	-8.37	100.60	107.30
2	1	170	TRP	CD1-CG-CD2	8.32	112.96	106.30
4	3	145	ARG	NE-CZ-NH2	-8.29	116.15	120.30
4	3	170	TRP	CE2-CD2-CG	-8.19	100.75	107.30
3	2	80	TRP	CE2-CD2-CG	-8.16	100.78	107.30
3	2	37	ARG	NE-CZ-NH2	-8.13	116.23	120.30
2	1	175	TRP	CE2-CD2-CG	-8.06	100.85	107.30

*Continued on next page...*

*Continued from previous page...*

Mol	Chain	Res	Type	Atoms	Z	Observed(°)	Ideal(°)
4	3	156	TRP	CE2-CD2-CG	-8.06	100.85	107.30
3	2	71	TRP	CE2-CD2-CG	-8.04	100.87	107.30
5	4	34	ARG	NE-CZ-NH1	8.01	124.31	120.30
4	3	110	TRP	CD1-CG-CD2	8.00	112.70	106.30
3	2	227	TRP	CE2-CD2-CG	-7.99	100.91	107.30
3	2	38	TRP	CD1-CG-CD2	7.93	112.64	106.30
2	1	108	TRP	CD1-CG-CD2	7.90	112.62	106.30
2	1	24	ARG	NE-CZ-NH2	-7.84	116.38	120.30
4	3	71	ARG	NE-CZ-NH1	7.79	124.20	120.30
3	2	78	TRP	CE2-CD2-CG	-7.65	101.18	107.30
2	1	269	TRP	CE2-CD2-CG	-7.64	101.19	107.30
2	1	170	TRP	CE2-CD2-CG	-7.50	101.30	107.30
2	1	108	TRP	CE2-CD2-CG	-7.42	101.37	107.30
4	3	156	TRP	CD1-CG-CD2	7.42	112.23	106.30
4	3	170	TRP	CD1-CG-CD2	7.30	112.14	106.30
3	2	270	ARG	NE-CZ-NH2	-7.25	116.67	120.30
4	3	110	TRP	CE2-CD2-CG	-7.24	101.51	107.30
3	2	38	TRP	CE2-CD2-CG	-7.14	101.59	107.30
3	2	71	TRP	CD1-CG-CD2	7.13	112.01	106.30
3	2	173	ARG	NE-CZ-NH1	7.04	123.82	120.30
3	2	264	ARG	NE-CZ-NH1	6.79	123.69	120.30
4	3	156	TRP	CG-CD2-CE3	6.73	139.96	133.90
3	2	100	TYR	CB-CG-CD1	6.73	125.04	121.00
4	3	145	ARG	NE-CZ-NH1	6.60	123.60	120.30
2	1	64	ARG	NE-CZ-NH1	6.56	123.58	120.30
4	3	206	ARG	NE-CZ-NH2	-6.54	117.03	120.30
3	2	76	ARG	NE-CZ-NH2	-6.52	117.04	120.30
2	1	264	LYS	CB-CA-C	-6.42	97.56	110.40
3	2	103	ARG	NE-CZ-NH2	-6.33	117.14	120.30
3	2	71	TRP	CG-CD2-CE3	6.31	139.58	133.90
4	3	124	MET	CG-SD-CE	5.98	109.77	100.20
2	1	70	ARG	NE-CZ-NH2	-5.96	117.32	120.30
4	3	160	LEU	CB-CG-CD1	-5.93	100.91	111.00
4	3	197	ARG	NE-CZ-NH1	5.89	123.24	120.30
2	1	175	TRP	CG-CD2-CE3	5.82	139.14	133.90
4	3	208	MET	CG-SD-CE	-5.71	91.07	100.20
2	1	272	ARG	NE-CZ-NH1	5.68	123.14	120.30
3	2	227	TRP	CG-CD2-CE3	5.67	139.00	133.90
4	3	13	TYR	CB-CG-CD2	-5.67	117.60	121.00
3	2	79	TRP	CB-CG-CD1	-5.66	119.64	127.00
2	1	127	TYR	CB-CG-CD2	-5.63	117.62	121.00
5	4	27	TYR	CB-CG-CD2	-5.62	117.63	121.00

*Continued on next page...*

*Continued from previous page...*

Mol	Chain	Res	Type	Atoms	Z	Observed(°)	Ideal(°)
5	4	14	GLU	N-CA-C	5.58	126.08	111.00
3	2	78	TRP	CG-CD1-NE1	-5.58	104.52	110.10
3	2	168	THR	CA-CB-CG2	5.52	120.13	112.40
4	3	170	TRP	CG-CD2-CE3	5.50	138.85	133.90
3	2	222	VAL	CG1-CB-CG2	-5.49	102.11	110.90
3	2	172	ARG	NE-CZ-NH1	5.49	123.04	120.30
3	2	79	TRP	CG-CD2-CE3	5.43	138.79	133.90
5	4	61	LEU	CA-CB-CG	5.39	127.69	115.30
2	1	286	TYR	CB-CG-CD2	-5.38	117.77	121.00
2	1	269	TRP	CB-CG-CD1	-5.33	120.07	127.00
2	1	83	ARG	CA-CB-CG	5.31	125.09	113.40
4	3	206	ARG	NE-CZ-NH1	5.29	122.94	120.30
4	3	226	ARG	NE-CZ-NH1	5.28	122.94	120.30
2	1	108	TRP	CG-CD2-CE3	5.25	138.62	133.90
2	1	108	TRP	CB-CG-CD1	-5.23	120.20	127.00
2	1	264	LYS	CA-CB-CG	5.19	124.81	113.40
2	1	269	TRP	CG-CD1-NE1	-5.14	104.96	110.10
2	1	214	LYS	CB-CA-C	-5.08	100.23	110.40
2	1	175	TRP	CB-CG-CD1	-5.08	120.39	127.00
2	1	175	TRP	CG-CD1-NE1	-5.07	105.03	110.10
3	2	54	THR	N-CA-CB	5.01	119.82	110.30

There are no chirality outliers.

There are no planarity outliers.

## 5.2 Too-close contacts

In the following table, the Non-H and H(model) columns list the number of non-hydrogen atoms and hydrogen atoms in the chain respectively. The H(added) column lists the number of hydrogen atoms added and optimized by MolProbity. The Clashes column lists the number of clashes within the asymmetric unit, whereas Symm-Clashes lists symmetry-related clashes.

Mol	Chain	Non-H	H(model)	H(added)	Clashes	Symm-Clashes
1	0	29	0	24	0	0
2	1	2222	0	2173	26	0
3	2	2085	0	2000	18	0
4	3	1834	0	1816	20	0
5	4	462	0	446	8	0
6	1	21	0	37	1	0
7	4	15	0	27	1	0
8	0	1	0	0	0	0

*Continued on next page...*

*Continued from previous page...*

Mol	Chain	Non-H	H(model)	H(added)	Clashes	Symm-Clashes
8	1	180	0	0	4	0
8	2	171	0	0	2	0
8	3	143	0	0	1	0
8	4	45	0	0	2	0
All	All	7208	0	6523	56	0

The all-atom clashscore is defined as the number of clashes found per 1000 atoms (including hydrogen atoms). The all-atom clashscore for this structure is 4.

All (56) close contacts within the same asymmetric unit are listed below, sorted by their clash magnitude.

Atom-1	Atom-2	Interatomic distance (Å)	Clash overlap (Å)
2:1:177:THR:HG22	2:1:180:ASN:HB2	1.57	0.85
2:1:158:MET:SD	2:1:177:THR:HG23	2.16	0.84
3:2:5:GLU:HG2	3:2:9:TYR:HD2	1.51	0.75
2:1:107:VAL:HG13	2:1:239:ILE:HD13	1.70	0.73
2:1:294:LEU:HD13	4:3:67:MET:SD	2.30	0.71
4:3:167:VAL:O	4:3:169:PRO:HD3	1.93	0.69
5:4:55:GLU:HG2	5:4:61:LEU:HD23	1.74	0.68
3:2:5:GLU:HG3	3:2:7:CYS:H	1.63	0.64
3:2:37:ARG:HG3	4:3:37:PRO:HB3	1.79	0.64
5:4:57:ILE:HD11	5:4:61:LEU:HB3	1.79	0.63
2:1:109:LYS:HA	2:1:239:ILE:HG22	1.82	0.61
2:1:177:THR:HG21	2:1:182:SER:OG	2.02	0.60
8:2:277:HOH:O	4:3:124:MET:HG2	2.02	0.60
3:2:5:GLU:HG2	3:2:9:TYR:CD2	2.35	0.60
2:1:191:PRO:HG2	4:3:13:TYR:HB2	1.85	0.58
2:1:149:HIS:HE1	8:1:305:HOH:O	1.88	0.56
2:1:96:ALA:HA	2:1:249:ASN:O	2.05	0.56
2:1:144:GLU:HG2	8:1:441:HOH:O	2.04	0.56
2:1:294:LEU:HD22	4:3:57:LEU:HD21	1.88	0.56
2:1:273:PRO:HB3	3:2:189:ASN:HB2	1.88	0.55
3:2:103:ARG:HD2	3:2:217:SER:O	2.10	0.52
2:1:48:GLU:HA	3:2:197:ILE:HB	1.92	0.52
3:2:5:GLU:HB3	3:2:9:TYR:HB2	1.91	0.51
2:1:22:THR:HG22	5:4:46:PHE:CE1	2.47	0.50
3:2:48:ASN:HB3	3:2:49:PRO:HD3	1.94	0.50
2:1:274:PRO:HG2	4:3:102:GLU:HG3	1.95	0.49
5:4:61:LEU:HA	8:4:105:HOH:O	2.13	0.49
2:1:40:GLU:HB3	5:4:64:THR:HB	1.94	0.49
4:3:55:PHE:HE2	4:3:212:GLY:HA3	1.78	0.48

*Continued on next page...*

Continued from previous page...

Atom-1	Atom-2	Interatomic distance (Å)	Clash overlap (Å)
4:3:87:LEU:HD11	4:3:114:LEU:HD12	1.96	0.48
3:2:213:VAL:HG22	4:3:37:PRO:HG2	1.95	0.48
4:3:124:MET:HE3	8:3:349:HOH:O	2.15	0.47
2:1:216:PRO:HB2	3:2:270:ARG:HB3	1.96	0.46
6:1:0:SPH:H4	8:1:398:HOH:O	2.16	0.46
3:2:179:TYR:HA	4:3:65:MET:CE	2.47	0.45
3:2:5:GLU:HG3	3:2:7:CYS:N	2.32	0.45
2:1:302:TYR:CE1	4:3:189:TYR:HB3	2.52	0.45
2:1:42:PRO:HA	5:4:63:LYS:O	2.18	0.44
3:2:187:LEU:HD22	4:3:65:MET:CE	2.48	0.44
2:1:57:PRO:HB3	4:3:169:PRO:HB3	1.99	0.43
4:3:72:LEU:HB2	4:3:208:MET:HE2	2.00	0.43
4:3:143:LYS:HD3	4:3:143:LYS:HA	1.79	0.43
2:1:218:LYS:HD2	8:2:412:HOH:O	2.18	0.42
4:3:61:LYS:HG2	4:3:66:GLU:HB3	2.01	0.42
4:3:97:HIS:HA	4:3:102:GLU:OE2	2.19	0.42
2:1:106:ALA:HA	8:1:437:HOH:O	2.19	0.42
3:2:143:THR:HG23	3:2:173:ARG:HA	2.01	0.42
4:3:54:PRO:HD2	4:3:94:ARG:O	2.20	0.42
3:2:187:LEU:HD13	3:2:232:LEU:HD22	2.01	0.42
2:1:155:TYR:CD1	2:1:155:TYR:N	2.88	0.41
2:1:264:LYS:NZ	5:4:37:ALA:O	2.52	0.41
2:1:221:SER:OG	2:1:224:LEU:HB2	2.20	0.41
2:1:197:PRO:HG3	8:4:93:HOH:O	2.21	0.41
3:2:13:VAL:HA	3:2:25:THR:O	2.20	0.41
5:4:32:TYR:HA	7:4:1:MYR:H131	2.03	0.41
3:2:60:ALA:O	3:2:255:PRO:HG2	2.22	0.40

There are no symmetry-related clashes.

## 5.3 Torsion angles [i](#)

### 5.3.1 Protein backbone [i](#)

In the following table, the Percentiles column shows the percent Ramachandran outliers of the chain as a percentile score with respect to all X-ray entries followed by that with respect to entries of similar resolution.

The Analysed column shows the number of residues for which the backbone conformation was analysed, and the total number of residues.

Mol	Chain	Analysed	Favoured	Allowed	Outliers	Percentiles	
1	0	3/5 (60%)	3 (100%)	0	0	100	100
2	1	281/302 (93%)	266 (95%)	13 (5%)	2 (1%)	22	54
3	2	266/272 (98%)	251 (94%)	13 (5%)	2 (1%)	19	51
4	3	233/238 (98%)	220 (94%)	13 (6%)	0	100	100
5	4	56/68 (82%)	51 (91%)	4 (7%)	1 (2%)	8	29
All	All	839/885 (95%)	791 (94%)	43 (5%)	5 (1%)	25	58

All (5) Ramachandran outliers are listed below:

Mol	Chain	Res	Type
2	1	234	LEU
5	4	60	VAL
3	2	48	ASN
3	2	114	ALA
2	1	270	CYS

### 5.3.2 Protein sidechains [i](#)

In the following table, the Percentiles column shows the percent sidechain outliers of the chain as a percentile score with respect to all X-ray entries followed by that with respect to entries of similar resolution.

The Analysed column shows the number of residues for which the sidechain conformation was analysed, and the total number of residues.

Mol	Chain	Analysed	Rotameric	Outliers	Percentiles	
1	0	4/4 (100%)	4 (100%)	0	100	100
2	1	245/261 (94%)	233 (95%)	12 (5%)	25	57
3	2	228/232 (98%)	216 (95%)	12 (5%)	22	54
4	3	210/212 (99%)	201 (96%)	9 (4%)	29	62
5	4	52/57 (91%)	50 (96%)	2 (4%)	33	67
All	All	739/766 (96%)	704 (95%)	35 (5%)	26	59

All (35) residues with a non-rotameric sidechain are listed below:

Mol	Chain	Res	Type
2	1	36	THR
2	1	109	LYS
2	1	143	THR

*Continued on next page...*

*Continued from previous page...*

Mol	Chain	Res	Type
2	1	144	GLU
2	1	145	THR
2	1	177	THR
2	1	196	VAL
2	1	220	GLN
2	1	233	SER
2	1	236	ASP
2	1	263	PRO
2	1	293	PRO
3	2	49	PRO
3	2	52	GLN
3	2	56	PRO
3	2	73	LYS
3	2	74	GLU
3	2	168	THR
3	2	169	SER
3	2	187	LEU
3	2	238	ASN
3	2	241	SER
3	2	251	LEU
3	2	264	ARG
4	3	71	ARG
4	3	85	LEU
4	3	89	PRO
4	3	124	MET
4	3	146	LYS
4	3	149	MET
4	3	208	MET
4	3	218	ASN
4	3	224	LEU
5	4	50	PRO
5	4	61	LEU

Sometimes sidechains can be flipped to improve hydrogen bonding and reduce clashes. All (6) such sidechains are listed below:

Mol	Chain	Res	Type
2	1	62	GLN
2	1	65	HIS
2	1	69	HIS
3	2	226	ASN
4	3	218	ASN
5	4	31	ASN

### 5.3.3 RNA [i](#)

There are no RNA molecules in this entry.

## 5.4 Non-standard residues in protein, DNA, RNA chains [i](#)

There are no non-standard protein/DNA/RNA residues in this entry.

## 5.5 Carbohydrates [i](#)

There are no monosaccharides in this entry.

## 5.6 Ligand geometry [i](#)

2 ligands are modelled in this entry.

In the following table, the Counts columns list the number of bonds (or angles) for which Mogul statistics could be retrieved, the number of bonds (or angles) that are observed in the model and the number of bonds (or angles) that are defined in the Chemical Component Dictionary. The Link column lists molecule types, if any, to which the group is linked. The Z score for a bond length (or angle) is the number of standard deviations the observed value is removed from the expected value. A bond length (or angle) with  $|Z| > 2$  is considered an outlier worth inspection. RMSZ is the root-mean-square of all Z scores of the bond lengths (or angles).

Mol	Type	Chain	Res	Link	Bond lengths			Bond angles		
					Counts	RMSZ	# Z  > 2	Counts	RMSZ	# Z  > 2
6	SPH	1	0	-	19,20,20	0.85	1 (5%)	18,21,21	2.58	4 (22%)
7	MYR	4	1	5	14,14,15	0.41	0	13,13,15	0.71	0

In the following table, the Chirals column lists the number of chiral outliers, the number of chiral centers analysed, the number of these observed in the model and the number defined in the Chemical Component Dictionary. Similar counts are reported in the Torsion and Rings columns. '-' means no outliers of that kind were identified.

Mol	Type	Chain	Res	Link	Chirals	Torsions	Rings
6	SPH	1	0	-	-	9/21/21/21	-
7	MYR	4	1	5	-	5/11/12/13	-

All (1) bond length outliers are listed below:

Mol	Chain	Res	Type	Atoms	Z	Observed(Å)	Ideal(Å)
6	1	0	SPH	C1-C2	3.20	1.57	1.52



All (4) bond angle outliers are listed below:

Mol	Chain	Res	Type	Atoms	Z	Observed(°)	Ideal(°)
6	1	0	SPH	O3-C3-C2	-6.73	96.63	107.31
6	1	0	SPH	O1-C1-C2	6.07	124.19	111.43
6	1	0	SPH	O3-C3-C4	-4.42	99.03	110.85
6	1	0	SPH	C1-C2-C3	-3.10	106.35	113.03

There are no chirality outliers.

All (14) torsion outliers are listed below:

Mol	Chain	Res	Type	Atoms
6	1	0	SPH	O1-C1-C2-N2
6	1	0	SPH	O1-C1-C2-C3
6	1	0	SPH	C1-C2-C3-O3
6	1	0	SPH	N2-C2-C3-O3
6	1	0	SPH	C2-C3-C4-C5
6	1	0	SPH	O3-C3-C4-C5
6	1	0	SPH	C3-C4-C5-C6
7	4	1	MYR	C10-C11-C12-C13
7	4	1	MYR	C6-C7-C8-C9
6	1	0	SPH	C10-C11-C12-C13
6	1	0	SPH	C9-C10-C11-C12
7	4	1	MYR	C5-C6-C7-C8
7	4	1	MYR	C11-C12-C13-C14
7	4	1	MYR	C7-C8-C9-C10

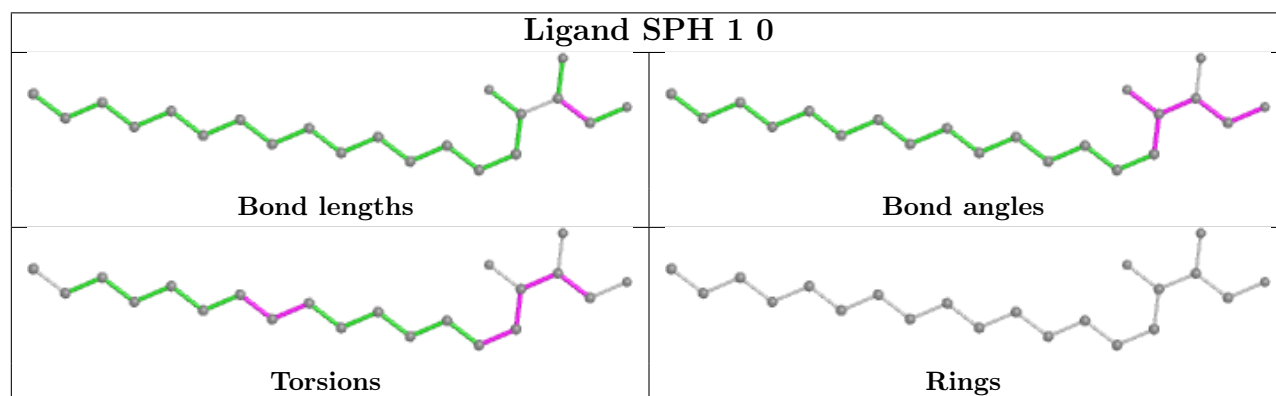
There are no ring outliers.

2 monomers are involved in 2 short contacts:

Mol	Chain	Res	Type	Clashes	Symm-Clashes
6	1	0	SPH	1	0
7	4	1	MYR	1	0

The following is a two-dimensional graphical depiction of Mogul quality analysis of bond lengths, bond angles, torsion angles, and ring geometry for all instances of the Ligand of Interest. In addition, ligands with molecular weight > 250 and outliers as shown on the validation Tables will also be included. For torsion angles, if less than 5% of the Mogul distribution of torsion angles is within 10 degrees of the torsion angle in question, then that torsion angle is considered an outlier. Any bond that is central to one or more torsion angles identified as an outlier by Mogul will be highlighted in the graph. For rings, the root-mean-square deviation (RMSD) between the ring in question and similar rings identified by Mogul is calculated over all ring torsion angles. If the average RMSD is greater than 60 degrees and the minimal RMSD between the ring in question and any Mogul-identified rings is also greater than 60 degrees, then that ring is considered an outlier.

The outliers are highlighted in purple. The color gray indicates Mogul did not find sufficient equivalents in the CSD to analyse the geometry.



## 5.7 Other polymers [i](#)

There are no such residues in this entry.

## 5.8 Polymer linkage issues [i](#)

There are no chain breaks in this entry.

## 6 Fit of model and data [i](#)

### 6.1 Protein, DNA and RNA chains [i](#)

EDS was not executed - this section is therefore empty.

### 6.2 Non-standard residues in protein, DNA, RNA chains [i](#)

EDS was not executed - this section is therefore empty.

### 6.3 Carbohydrates [i](#)

EDS was not executed - this section is therefore empty.

### 6.4 Ligands [i](#)

EDS was not executed - this section is therefore empty.

### 6.5 Other polymers [i](#)

EDS was not executed - this section is therefore empty.