



Full wwPDB X-ray Structure Validation Report ⓘ

Mar 23, 2024 – 09:01 PM EDT

PDB ID : 3AR6
Title : Calcium pump crystal structure with bound TNP-ADP and TG in the absence of calcium
Authors : Toyoshima, C.; Yonekura, S.; Tsueda, J.; Iwasawa, S.
Deposited on : 2010-11-24
Resolution : 2.20 Å(reported)

This is a Full wwPDB X-ray Structure Validation Report for a publicly released PDB entry.

We welcome your comments at validation@mail.wwpdb.org

A user guide is available at

<https://www.wwpdb.org/validation/2017/XrayValidationReportHelp>

with specific help available everywhere you see the ⓘ symbol.

The types of validation reports are described at

<http://www.wwpdb.org/validation/2017/FAQs#types>.

The following versions of software and data (see [references ⓘ](#)) were used in the production of this report:

MolProbity : 4.02b-467
Mogul : 1.8.5 (274361), CSD as541be (2020)
Xtrriage (Phenix) : 1.13
EDS : 2.36.1
buster-report : 1.1.7 (2018)
Percentile statistics : 20191225.v01 (using entries in the PDB archive December 25th 2019)
Refmac : 5.8.0158
CCP4 : 7.0.044 (Gargrove)
Ideal geometry (proteins) : Engh & Huber (2001)
Ideal geometry (DNA, RNA) : Parkinson et al. (1996)
Validation Pipeline (wwPDB-VP) : 2.36.1

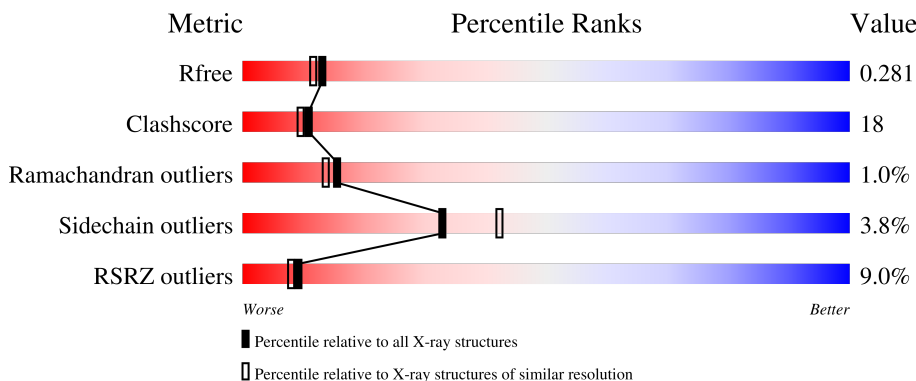
1 Overall quality at a glance

The following experimental techniques were used to determine the structure:

X-RAY DIFFRACTION

The reported resolution of this entry is 2.20 Å.

Percentile scores (ranging between 0-100) for global validation metrics of the entry are shown in the following graphic. The table shows the number of entries on which the scores are based.



Metric	Whole archive (#Entries)	Similar resolution (#Entries, resolution range(Å))
R_{free}	130704	4898 (2.20-2.20)
Clashscore	141614	5594 (2.20-2.20)
Ramachandran outliers	138981	5503 (2.20-2.20)
Sidechain outliers	138945	5504 (2.20-2.20)
RSRZ outliers	127900	4800 (2.20-2.20)

The table below summarises the geometric issues observed across the polymeric chains and their fit to the electron density. The red, orange, yellow and green segments of the lower bar indicate the fraction of residues that contain outliers for ≥ 3 , 2, 1 and 0 types of geometric quality criteria respectively. A grey segment represents the fraction of residues that are not modelled. The numeric value for each fraction is indicated below the corresponding segment, with a dot representing fractions $\leq 5\%$. The upper red bar (where present) indicates the fraction of residues that have poor fit to the electron density. The numeric value is given above the bar.

Mol	Chain	Length	Quality of chain
1	A	995	

The following table lists non-polymeric compounds, carbohydrate monomers and non-standard residues in protein, DNA, RNA chains that are outliers for geometric or electron-density-fit criteria:

Mol	Type	Chain	Res	Chirality	Geometry	Clashes	Electron density
5	12D	A	1002	X	-	-	-

2 Entry composition [i](#)

There are 7 unique types of molecules in this entry. The entry contains 8093 atoms, of which 0 are hydrogens and 0 are deuteriums.

In the tables below, the ZeroOcc column contains the number of atoms modelled with zero occupancy, the AltConf column contains the number of residues with at least one atom in alternate conformation and the Trace column contains the number of residues modelled with at most 2 atoms.

- Molecule 1 is a protein called Sarcoplasmic/endoplasmic reticulum calcium ATPase 1.

Mol	Chain	Residues	Atoms					ZeroOcc	AltConf	Trace
			Total	C	N	O	S			
1	A	995	7674	4878	1287	1452	57	0	0	0

There are 2 discrepancies between the modelled and reference sequences:

Chain	Residue	Modelled	Actual	Comment	Reference
A	1A	ACE	-	acetylation	UNP P04191
A	994	GLY	ASP	SEE REMARK 999	UNP P04191

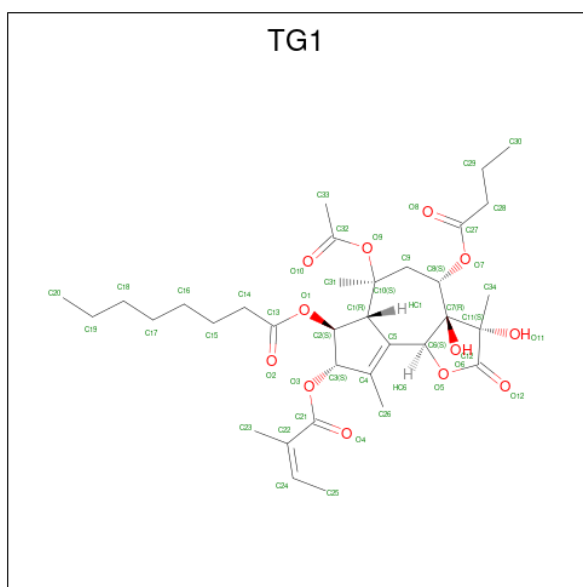
- Molecule 2 is SODIUM ION (three-letter code: NA) (formula: Na).

Mol	Chain	Residues	Atoms		ZeroOcc	AltConf
2	A	1	Total	Na	0	0
			1	1		

- Molecule 3 is MAGNESIUM ION (three-letter code: MG) (formula: Mg).

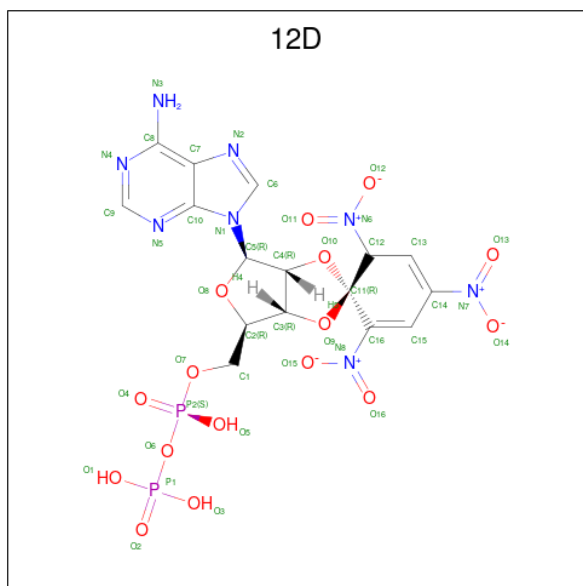
Mol	Chain	Residues	Atoms		ZeroOcc	AltConf
3	A	1	Total	Mg	0	0
			1	1		

- Molecule 4 is OCTANOIC ACID [3S-[3ALPHA, 3ABETA, 4ALPHA, 6BETA, 6ABETA, 7BETA, 8ALPHA(Z), 9BALPHA]]-6-(ACETYLOXY)-2,3,-3A,4,5,6,6A,7,8,9B-DECAHYDRO-3,3A-DIHYDROXY-3,6,9-TRIMETHYL-8-[(2-METHYL-1-OXO-2-BUTENYL)OXY]-2-OXO-4-(1-OXOBUTOXY)-AZULENO[4,5-B]FURAN-7-YL ESTER (three-letter code: TG1) (formula: C₃₄H₅₀O₁₂).



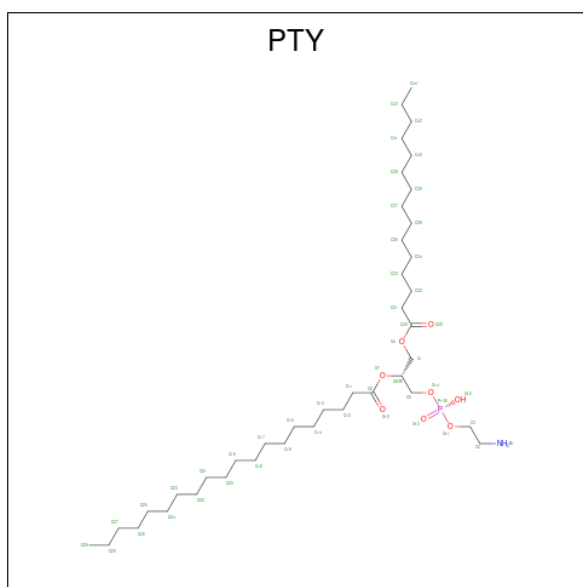
Mol	Chain	Residues	Atoms				ZeroOcc	AltConf
4	A	1	Total	C	O	0	0	
			46	34	12			

- Molecule 5 is 2',3'-O-[(1R,6R)-2,4,6-trinitrocyclohexa-2,4-diene-1,1-diyl]adenosine 5'-(trihydrogen diphosphate) (three-letter code: 12D) (formula: $C_{16}H_{16}N_8O_{16}P_2$).



Mol	Chain	Residues	Atoms				ZeroOcc	AltConf	
5	A	1	Total	C	N	O	P	0	0
			42	16	8	16	2		

- Molecule 6 is PHOSPHATIDYLETHANOLAMINE (three-letter code: PTY) (formula: $C_{40}H_{80}NO_8P$).



Mol	Chain	Residues	Atoms					ZeroOcc	AltConf
			Total	C	N	O	P		
6	A	1	19	9	1	8	1	0	0
6	A	1	19	9	1	8	1	0	0
6	A	1	19	9	1	8	1	0	0

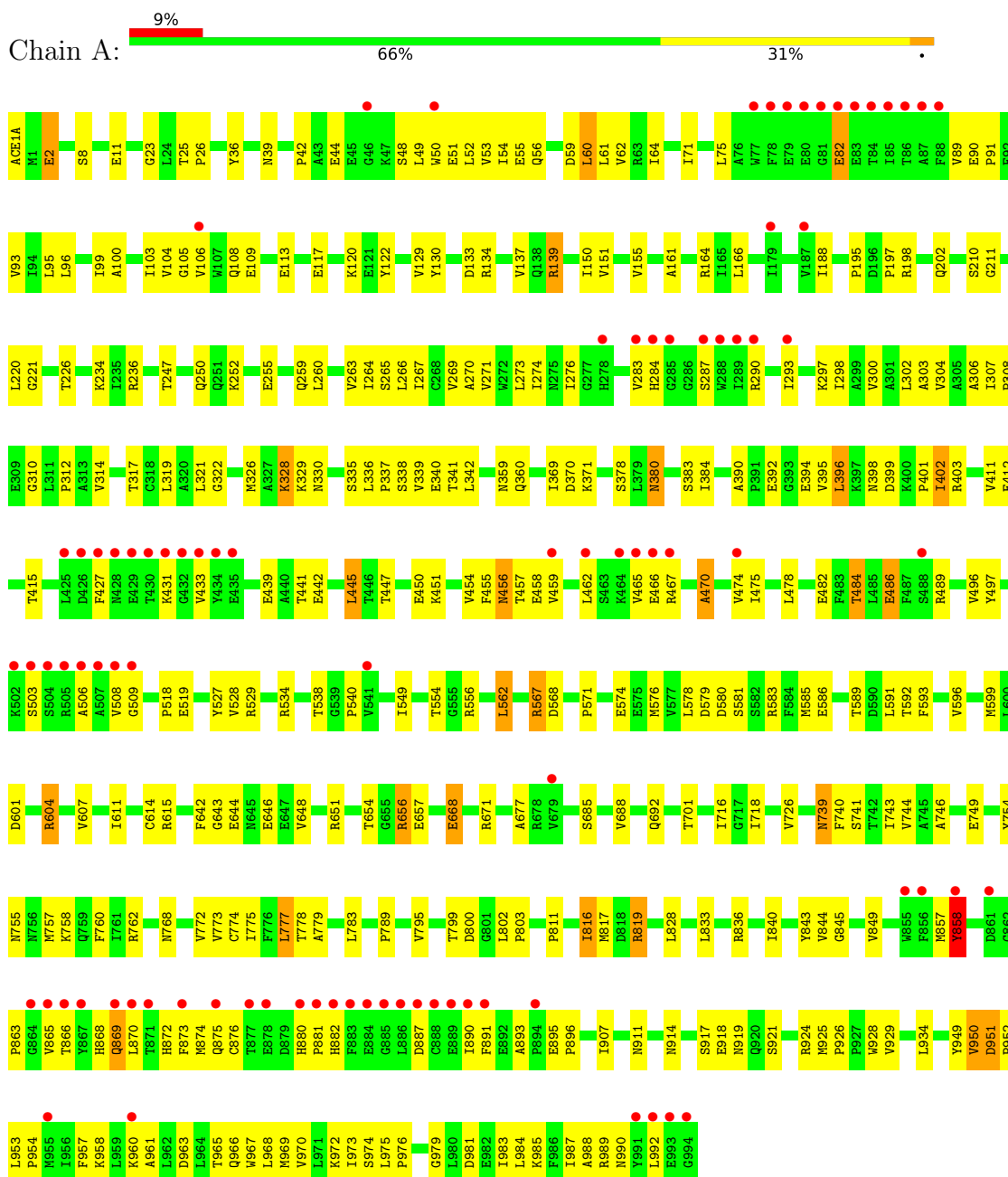
- Molecule 7 is water.

Mol	Chain	Residues	Atoms		ZeroOcc	AltConf
7	A	272	Total	O	0	0
			272	272		

3 Residue-property plots

These plots are drawn for all protein, RNA, DNA and oligosaccharide chains in the entry. The first graphic for a chain summarises the proportions of the various outlier classes displayed in the second graphic. The second graphic shows the sequence view annotated by issues in geometry and electron density. Residues are color-coded according to the number of geometric quality criteria for which they contain at least one outlier: green = 0, yellow = 1, orange = 2 and red = 3 or more. A red dot above a residue indicates a poor fit to the electron density ($RSRZ > 2$). Stretches of 2 or more consecutive residues without any outlier are shown as a green connector. Residues present in the sample, but not in the model, are shown in grey.

- Molecule 1: Sarcoplasmic/endoplasmic reticulum calcium ATPase 1



4 Data and refinement statistics

Property	Value	Source
Space group	P 41 21 2	Depositor
Cell constants a, b, c, α , β , γ	71.62Å 71.62Å 588.19Å 90.00° 90.00° 90.00°	Depositor
Resolution (Å)	15.00 – 2.20 49.03 – 2.20	Depositor EDS
% Data completeness (in resolution range)	97.8 (15.00-2.20) 99.3 (49.03-2.20)	Depositor EDS
R_{merge}	(Not available)	Depositor
R_{sym}	0.11	Depositor
$\langle I/\sigma(I) \rangle$ ¹	2.61 (at 2.20Å)	Xtrriage
Refinement program	CNS	Depositor
R, R_{free}	0.250 , 0.287 0.243 , 0.281	Depositor DCC
R_{free} test set	3941 reflections (4.96%)	wwPDB-VP
Wilson B-factor (Å ²)	47.2	Xtrriage
Anisotropy	0.211	Xtrriage
Bulk solvent k_{sol} (e/Å ³), B_{sol} (Å ²)	0.35 , 62.7	EDS
L-test for twinning ²	$\langle L \rangle = 0.40$, $\langle L^2 \rangle = 0.22$	Xtrriage
Estimated twinning fraction	No twinning to report.	Xtrriage
F_o, F_c correlation	0.93	EDS
Total number of atoms	8093	wwPDB-VP
Average B, all atoms (Å ²)	63.0	wwPDB-VP

Xtrriage's analysis on translational NCS is as follows: *The largest off-origin peak in the Patterson function is 2.25% of the height of the origin peak. No significant pseudotranslation is detected.*

¹Intensities estimated from amplitudes.

²Theoretical values of $\langle |L| \rangle$, $\langle L^2 \rangle$ for acentric reflections are 0.5, 0.333 respectively for untwinned datasets, and 0.375, 0.2 for perfectly twinned datasets.

5 Model quality [i](#)

5.1 Standard geometry [i](#)

Bond lengths and bond angles in the following residue types are not validated in this section: TG1, 12D, ACE, PTY, MG, NA

The Z score for a bond length (or angle) is the number of standard deviations the observed value is removed from the expected value. A bond length (or angle) with $|Z| > 5$ is considered an outlier worth inspection. RMSZ is the root-mean-square of all Z scores of the bond lengths (or angles).

Mol	Chain	Bond lengths		Bond angles	
		RMSZ	# $ Z > 5$	RMSZ	# $ Z > 5$
1	A	0.36	0/7813	0.60	1/10594 (0.0%)

There are no bond length outliers.

All (1) bond angle outliers are listed below:

Mol	Chain	Res	Type	Atoms	Z	Observed(°)	Ideal(°)
1	A	601	ASP	N-CA-C	-5.26	96.79	111.00

There are no chirality outliers.

There are no planarity outliers.

5.2 Too-close contacts [i](#)

In the following table, the Non-H and H(model) columns list the number of non-hydrogen atoms and hydrogen atoms in the chain respectively. The H(added) column lists the number of hydrogen atoms added and optimized by MolProbity. The Clashes column lists the number of clashes within the asymmetric unit, whereas Symm-Clashes lists symmetry-related clashes.

Mol	Chain	Non-H	H(model)	H(added)	Clashes	Symm-Clashes
1	A	7674	0	7765	285	0
2	A	1	0	0	0	0
3	A	1	0	0	0	0
4	A	46	0	50	3	0
5	A	42	0	12	0	0
6	A	57	0	33	2	0
7	A	272	0	0	11	0
All	All	8093	0	7860	285	0

The all-atom clashscore is defined as the number of clashes found per 1000 atoms (including

hydrogen atoms). The all-atom clashscore for this structure is 18.

All (285) close contacts within the same asymmetric unit are listed below, sorted by their clash magnitude.

Atom-1	Atom-2	Interatomic distance (Å)	Clash overlap (Å)
1:A:988:ALA:HA	1:A:992:LEU:HD12	1.49	0.94
1:A:819:ARG:HH11	1:A:819:ARG:HB3	1.33	0.94
1:A:963:ASP:HB3	1:A:966:GLN:HG3	1.47	0.94
1:A:129:VAL:HG12	1:A:151:VAL:HG22	1.52	0.91
1:A:290:ARG:HH22	1:A:875:GLN:HA	1.44	0.83
1:A:963:ASP:H	1:A:966:GLN:HE21	1.27	0.82
1:A:326:MET:HG2	1:A:749:GLU:HG2	1.63	0.78
1:A:287:SER:HB3	1:A:290:ARG:HB2	1.64	0.78
1:A:819:ARG:HB3	1:A:819:ARG:NH1	2.00	0.76
1:A:188:ILE:HD12	1:A:486:GLU:HG2	1.69	0.74
1:A:739:ASN:HD22	1:A:740:PHE:N	1.86	0.73
1:A:508:VAL:HG12	1:A:509:GLY:H	1.54	0.73
1:A:963:ASP:N	1:A:966:GLN:HE21	1.87	0.73
1:A:260:LEU:HD11	1:A:306:ALA:HB1	1.72	0.72
1:A:758:LYS:O	1:A:762:ARG:HG3	1.90	0.71
1:A:328:LYS:HA	1:A:328:LYS:NZ	2.05	0.71
1:A:836:ARG:O	1:A:840:ILE:HG12	1.91	0.71
1:A:326:MET:HE1	1:A:339:VAL:HG12	1.72	0.70
1:A:643:GLY:H	1:A:646:GLU:HG2	1.55	0.69
1:A:802:LEU:HB2	1:A:803:PRO:HD3	1.73	0.69
1:A:402:ILE:HD13	1:A:402:ILE:H	1.58	0.69
1:A:921:SER:H	1:A:989:ARG:HH12	1.41	0.68
1:A:395:VAL:O	1:A:396:LEU:HD23	1.94	0.68
1:A:484:THR:HB	1:A:496:VAL:HG12	1.74	0.68
1:A:921:SER:H	1:A:989:ARG:NH1	1.91	0.68
1:A:571:PRO:HG2	1:A:576:MET:SD	2.34	0.68
1:A:869:GLN:HB2	1:A:872:HIS:CD2	2.30	0.66
1:A:924:ARG:HA	1:A:924:ARG:HE	1.60	0.66
1:A:264:ILE:HG23	1:A:302:LEU:HD12	1.78	0.65
1:A:328:LYS:HA	1:A:328:LYS:HZ3	1.59	0.65
1:A:104:VAL:HG12	1:A:108:GLN:HE21	1.60	0.65
1:A:370:ASP:HB3	1:A:378:SER:OG	1.97	0.65
1:A:857:MET:HB3	1:A:866:THR:HA	1.79	0.65
1:A:2:GLU:H	1:A:2:GLU:CD	2.00	0.64
1:A:133:ASP:O	1:A:134:ARG:HG3	1.97	0.64
1:A:773:VAL:HG12	1:A:845:GLY:HA3	1.80	0.64
1:A:863:PRO:HG2	1:A:890:ILE:HD12	1.80	0.63
1:A:52:LEU:HD23	1:A:106:VAL:HG13	1.81	0.63

Continued on next page...

Continued from previous page...

Atom-1	Atom-2	Interatomic distance (Å)	Clash overlap (Å)
1:A:61:LEU:HD22	1:A:307:ILE:HD12	1.80	0.63
1:A:48:SER:OG	1:A:51:GLU:HG3	1.99	0.63
1:A:75:LEU:HD21	1:A:297:LYS:HG3	1.81	0.62
1:A:688:VAL:O	1:A:692:GLN:HG3	1.99	0.62
1:A:462:LEU:HD22	1:A:466:GLU:OE1	2.00	0.62
1:A:567:ARG:HG2	1:A:591:LEU:HD23	1.80	0.62
1:A:369:ILE:HG13	1:A:528:VAL:CG1	2.30	0.62
1:A:50:TRP:O	1:A:54:ILE:HG12	1.99	0.62
1:A:50:TRP:CZ2	1:A:54:ILE:HD11	2.34	0.62
1:A:412:GLU:OE1	1:A:529:ARG:HD2	1.99	0.62
1:A:427:PHE:HB3	1:A:465:VAL:HG22	1.82	0.61
1:A:23:GLY:HA3	1:A:130:TYR:O	2.00	0.61
1:A:611:ILE:O	1:A:615:ARG:HG3	2.00	0.61
1:A:773:VAL:CG1	1:A:845:GLY:HA3	2.29	0.61
1:A:643:GLY:N	1:A:646:GLU:HG2	2.15	0.61
1:A:369:ILE:HG13	1:A:528:VAL:HG13	1.83	0.61
1:A:303:ALA:O	1:A:307:ILE:HG12	2.01	0.61
1:A:990:ASN:HD21	6:A:1012:PTY:HC31	1.66	0.61
1:A:90:GLU:OE1	1:A:789:PRO:HG2	2.02	0.60
1:A:873:PHE:HD2	1:A:876:CYS:H	1.49	0.60
1:A:383:SER:O	1:A:384:ILE:HD13	2.02	0.60
1:A:778:THR:HG21	7:A:2181:HOH:O	2.01	0.60
1:A:271:VAL:HG11	1:A:298:ILE:HD11	1.84	0.59
1:A:865:VAL:HB	1:A:868:HIS:HB2	1.84	0.59
1:A:273:LEU:HA	1:A:276:ILE:HD11	1.84	0.59
1:A:384:ILE:HD12	1:A:395:VAL:HG22	1.83	0.59
1:A:580:ASP:OD2	1:A:583:ARG:HG3	2.03	0.59
1:A:335:SER:HB3	1:A:338:SER:OG	2.04	0.58
1:A:300:VAL:O	1:A:304:VAL:HG23	2.03	0.58
1:A:441:THR:HG23	1:A:599:MET:SD	2.43	0.58
1:A:951:ASP:HB2	1:A:952:PRO:HD3	1.84	0.58
1:A:604:ARG:CB	1:A:607:VAL:HG13	2.34	0.58
1:A:757:MET:HA	1:A:760:PHE:CE2	2.39	0.58
1:A:51:GLU:O	1:A:55:GLU:HG3	2.04	0.57
1:A:61:LEU:HD22	1:A:307:ILE:CD1	2.34	0.57
1:A:911:ASN:HA	1:A:914:ASN:HD22	1.66	0.57
1:A:974:SER:C	1:A:976:PRO:HD2	2.25	0.57
1:A:960:LYS:HD3	1:A:961:ALA:O	2.04	0.57
1:A:188:ILE:HD12	1:A:486:GLU:CG	2.34	0.56
1:A:166:LEU:H	1:A:221:GLY:HA2	1.71	0.56
1:A:574:GLU:H	1:A:574:GLU:CD	2.08	0.55

Continued on next page...

Continued from previous page...

Atom-1	Atom-2	Interatomic distance (Å)	Clash overlap (Å)
1:A:880:HIS:N	1:A:881:PRO:HD2	2.21	0.55
1:A:8:SER:OG	1:A:11:GLU:HG3	2.07	0.55
1:A:604:ARG:HB2	1:A:607:VAL:HG13	1.88	0.55
1:A:312:PRO:HG2	7:A:2023:HOH:O	2.06	0.55
1:A:503:SER:HB3	1:A:506:ALA:HB2	1.89	0.55
1:A:267:ILE:O	1:A:271:VAL:HG23	2.06	0.55
1:A:843:TYR:OH	1:A:976:PRO:HG2	2.06	0.55
1:A:247:THR:H	1:A:250:GLN:NE2	2.05	0.55
1:A:529:ARG:HH22	1:A:568:ASP:CG	2.10	0.54
1:A:49:LEU:O	1:A:53:VAL:HG23	2.07	0.54
1:A:403:ARG:HD3	1:A:456:ASN:HD21	1.71	0.54
1:A:150:ILE:CG2	1:A:220:LEU:HD11	2.38	0.54
1:A:322:GLY:O	1:A:326:MET:HG3	2.08	0.54
1:A:538:THR:HG22	1:A:540:PRO:HD2	1.89	0.54
1:A:873:PHE:HE2	1:A:876:CYS:HA	1.73	0.54
1:A:100:ALA:O	1:A:104:VAL:HG23	2.08	0.53
1:A:75:LEU:HD11	1:A:293:ILE:HG23	1.89	0.53
1:A:95:LEU:HD23	1:A:95:LEU:O	2.09	0.53
1:A:646:GLU:OE1	1:A:651:ARG:NH1	2.41	0.53
1:A:120:LYS:HE3	7:A:2270:HOH:O	2.08	0.53
1:A:967:TRP:O	1:A:970:VAL:HB	2.09	0.53
1:A:874:MET:HG2	1:A:891:PHE:CD2	2.44	0.53
1:A:963:ASP:H	1:A:966:GLN:NE2	2.00	0.53
1:A:755:ASN:ND2	1:A:816:ILE:HD11	2.24	0.53
1:A:895:GLU:N	1:A:896:PRO:HD2	2.24	0.53
1:A:921:SER:N	1:A:989:ARG:HH12	2.07	0.53
1:A:150:ILE:HG23	1:A:220:LEU:HD11	1.91	0.52
1:A:921:SER:CB	1:A:989:ARG:HH12	2.23	0.52
1:A:130:TYR:CZ	1:A:137:VAL:HB	2.45	0.52
1:A:534:ARG:HH21	1:A:568:ASP:CB	2.22	0.52
1:A:918:GLU:C	1:A:919:ASN:HD22	2.13	0.52
1:A:122:TYR:O	1:A:211:GLY:HA2	2.09	0.52
1:A:643:GLY:H	1:A:646:GLU:CG	2.23	0.52
1:A:654:THR:HA	1:A:677:ALA:O	2.11	0.52
1:A:819:ARG:NH1	1:A:819:ARG:CB	2.71	0.52
1:A:339:VAL:HG23	1:A:340:GLU:N	2.25	0.51
1:A:921:SER:HB2	1:A:989:ARG:HH12	1.75	0.51
1:A:271:VAL:HG11	1:A:298:ILE:CD1	2.40	0.51
1:A:139:ARG:HG3	1:A:139:ARG:O	2.09	0.51
1:A:893:ALA:HB1	1:A:895:GLU:OE1	2.10	0.51
1:A:963:ASP:OD2	1:A:965:THR:HB	2.11	0.51

Continued on next page...

Continued from previous page...

Atom-1	Atom-2	Interatomic distance (Å)	Clash overlap (Å)
1:A:273:LEU:HA	1:A:276:ILE:CG1	2.41	0.51
1:A:336:LEU:HD22	1:A:336:LEU:H	1.76	0.51
1:A:604:ARG:HG3	7:A:2122:HOH:O	2.10	0.51
1:A:518:PRO:HB3	1:A:549:ILE:HD13	1.92	0.51
1:A:161:ALA:HA	1:A:210:SER:HB2	1.93	0.50
1:A:668:GLU:O	1:A:671:ARG:HG2	2.11	0.50
1:A:60:LEU:O	1:A:64:ILE:HG12	2.11	0.50
1:A:928:TRP:HA	1:A:934:LEU:HD11	1.93	0.50
1:A:59:ASP:HB3	1:A:62:VAL:HG22	1.93	0.50
1:A:308:PRO:HB3	1:A:768:ASN:OD1	2.11	0.50
1:A:236:ARG:HD3	1:A:236:ARG:C	2.32	0.50
1:A:411:VAL:HA	1:A:454:VAL:HG11	1.94	0.50
1:A:981:ASP:OD2	1:A:985:LYS:HE3	2.12	0.50
1:A:924:ARG:O	1:A:926:PRO:HD3	2.11	0.50
1:A:298:ILE:O	1:A:302:LEU:HB2	2.11	0.49
1:A:607:VAL:O	1:A:611:ILE:HG12	2.12	0.49
1:A:668:GLU:HA	1:A:671:ARG:HD2	1.93	0.49
1:A:395:VAL:HG12	1:A:402:ILE:HD11	1.93	0.49
1:A:454:VAL:HG22	7:A:2139:HOH:O	2.12	0.49
1:A:554:THR:HG23	7:A:2398:HOH:O	2.12	0.49
1:A:762:ARG:HD3	1:A:828:LEU:O	2.12	0.49
1:A:442:GLU:O	1:A:445:LEU:HB2	2.12	0.49
1:A:336:LEU:HB2	1:A:337:PRO:HD3	1.95	0.49
1:A:529:ARG:NH2	1:A:568:ASP:OD2	2.43	0.49
1:A:881:PRO:HG2	1:A:882:HIS:H	1.76	0.49
1:A:202:GLN:NE2	1:A:489:ARG:NH1	2.61	0.49
1:A:260:LEU:HD21	1:A:307:ILE:HD13	1.95	0.49
1:A:963:ASP:HB3	1:A:966:GLN:CG	2.33	0.49
1:A:104:VAL:HG12	1:A:108:GLN:NE2	2.28	0.48
1:A:302:LEU:HD13	1:A:302:LEU:O	2.13	0.48
1:A:342:LEU:HD13	1:A:716:ILE:HG21	1.94	0.48
1:A:772:VAL:HG12	4:A:1003:TG1:H202	1.95	0.48
1:A:583:ARG:O	1:A:586:GLU:HB3	2.13	0.48
1:A:924:ARG:HA	1:A:924:ARG:NE	2.26	0.48
1:A:527:TYR:O	1:A:592:THR:HA	2.14	0.48
1:A:949:TYR:O	1:A:951:ASP:N	2.46	0.48
1:A:969:MET:O	1:A:973:ILE:HG13	2.13	0.48
1:A:95:LEU:O	1:A:99:ILE:HG13	2.14	0.48
1:A:762:ARG:HD2	1:A:833:LEU:HD21	1.94	0.48
1:A:858:TYR:CD1	1:A:858:TYR:N	2.78	0.48
1:A:151:VAL:O	1:A:220:LEU:HD12	2.14	0.48

Continued on next page...

Continued from previous page...

Atom-1	Atom-2	Interatomic distance (Å)	Clash overlap (Å)
1:A:274:ILE:O	1:A:274:ILE:HG22	2.13	0.48
1:A:840:ILE:O	1:A:844:VAL:HG23	2.13	0.48
1:A:973:ILE:O	1:A:976:PRO:HG2	2.14	0.48
1:A:195:PRO:O	1:A:197:PRO:HD3	2.14	0.47
1:A:975:LEU:N	1:A:976:PRO:HD2	2.28	0.47
1:A:979:GLY:O	1:A:983:ILE:HG13	2.14	0.47
1:A:604:ARG:O	1:A:607:VAL:HG22	2.15	0.47
1:A:777:LEU:HB3	1:A:849:VAL:HG21	1.97	0.47
1:A:450:GLU:OE2	1:A:450:GLU:HA	2.15	0.47
1:A:455:PHE:O	1:A:456:ASN:C	2.53	0.47
1:A:865:VAL:HB	1:A:868:HIS:CB	2.45	0.47
1:A:273:LEU:HA	1:A:276:ILE:CD1	2.45	0.47
1:A:44:GLU:OE1	1:A:117:GLU:HG3	2.14	0.46
1:A:508:VAL:HG12	1:A:509:GLY:N	2.28	0.46
1:A:56:GLN:OE1	1:A:105:GLY:HA3	2.15	0.46
1:A:755:ASN:HD22	1:A:816:ILE:HD11	1.81	0.46
1:A:887:ASP:OD1	1:A:890:ILE:HG23	2.15	0.46
1:A:310:GLY:O	1:A:314:VAL:HG23	2.15	0.46
1:A:604:ARG:HB3	1:A:607:VAL:HG13	1.98	0.46
1:A:161:ALA:CA	1:A:210:SER:HB2	2.46	0.46
1:A:775:ILE:HA	1:A:778:THR:HG22	1.98	0.46
1:A:474:VAL:O	1:A:478:LEU:HD13	2.16	0.46
1:A:394:GLU:HG3	1:A:396:LEU:HD21	1.97	0.46
1:A:783:LEU:HD23	1:A:870:LEU:HB2	1.98	0.46
1:A:585:MET:O	1:A:589:THR:HG23	2.16	0.46
1:A:654:THR:OG1	1:A:657:GLU:HG3	2.16	0.45
1:A:458:GLU:HG2	7:A:2390:HOH:O	2.16	0.45
1:A:642:PHE:CG	1:A:648:VAL:HG11	2.51	0.45
1:A:921:SER:HB2	1:A:989:ARG:HH22	1.80	0.45
1:A:270:ALA:O	1:A:274:ILE:HG13	2.16	0.45
1:A:50:TRP:CH2	1:A:54:ILE:HD11	2.51	0.45
1:A:774:CYS:O	1:A:778:THR:HG22	2.16	0.45
1:A:263:VAL:HG11	4:A:1003:TG1:O4	2.17	0.45
1:A:394:GLU:HB2	7:A:2273:HOH:O	2.16	0.45
1:A:398:ASN:O	1:A:399:ASP:HB2	2.17	0.45
1:A:593:PHE:HZ	1:A:596:VAL:HG23	1.82	0.45
1:A:283:VAL:HG13	1:A:284:HIS:ND1	2.32	0.45
1:A:302:LEU:HD13	1:A:302:LEU:C	2.37	0.45
1:A:104:VAL:O	1:A:108:GLN:HG3	2.17	0.45
1:A:739:ASN:ND2	1:A:741:SER:H	2.14	0.45
1:A:983:ILE:O	1:A:987:ILE:HG13	2.16	0.45

Continued on next page...

Continued from previous page...

Atom-1	Atom-2	Interatomic distance (Å)	Clash overlap (Å)
1:A:614:CYS:SG	1:A:744:VAL:HG22	2.57	0.45
1:A:895:GLU:HG3	1:A:960:LYS:HD2	1.99	0.45
1:A:336:LEU:O	1:A:339:VAL:HG22	2.17	0.44
1:A:739:ASN:HD22	1:A:739:ASN:C	2.20	0.44
1:A:25:THR:HB	1:A:26:PRO:HD2	2.00	0.44
1:A:968:LEU:O	1:A:972:LYS:HB2	2.17	0.44
1:A:390:ALA:C	1:A:392:GLU:H	2.21	0.44
1:A:42:PRO:HG2	1:A:236:ARG:CZ	2.48	0.44
1:A:342:LEU:HD21	1:A:746:ALA:HB1	2.00	0.44
1:A:950:VAL:HG12	1:A:952:PRO:HD2	1.99	0.44
1:A:800:ASP:C	1:A:803:PRO:HD2	2.38	0.44
1:A:259:GLN:O	1:A:263:VAL:HG23	2.17	0.43
1:A:283:VAL:HG13	1:A:284:HIS:N	2.33	0.43
1:A:89:VAL:O	1:A:93:VAL:HG23	2.18	0.43
1:A:957:PHE:O	1:A:958:LYS:HB2	2.18	0.43
1:A:415:THR:HA	1:A:475:ILE:HG21	2.00	0.43
1:A:96:LEU:C	1:A:96:LEU:HD23	2.38	0.43
1:A:252:LYS:HD3	1:A:828:LEU:CD1	2.49	0.43
1:A:527:TYR:HB2	1:A:592:THR:OG1	2.17	0.43
1:A:656:ARG:NH1	1:A:656:ARG:HG2	2.33	0.43
1:A:71:ILE:O	1:A:75:LEU:HB2	2.19	0.43
1:A:604:ARG:HG3	1:A:604:ARG:HH11	1.84	0.43
1:A:701:THR:HA	1:A:718:ILE:O	2.18	0.43
1:A:800:ASP:O	1:A:803:PRO:HD2	2.19	0.43
1:A:1(A):ACE:H3	1:A:36:TYR:CE1	2.54	0.43
1:A:137:VAL:HG13	1:A:137:VAL:O	2.19	0.43
1:A:326:MET:HE1	1:A:339:VAL:CG1	2.43	0.43
1:A:556:ARG:HH12	1:A:644:GLU:CG	2.32	0.43
1:A:604:ARG:HB2	1:A:607:VAL:CG1	2.48	0.42
1:A:656:ARG:HG2	1:A:656:ARG:HH11	1.84	0.42
1:A:234:LYS:NZ	7:A:2298:HOH:O	2.52	0.42
1:A:265:SER:O	1:A:269:VAL:HG23	2.20	0.42
1:A:844:VAL:HG22	1:A:907:ILE:HG21	2.01	0.42
1:A:534:ARG:NH2	1:A:568:ASP:HB2	2.34	0.42
1:A:754:TYR:HA	1:A:757:MET:HE2	2.01	0.42
1:A:953:LEU:N	1:A:954:PRO:HD2	2.34	0.42
1:A:202:GLN:OE1	1:A:489:ARG:NH1	2.53	0.42
1:A:304:VAL:HG21	1:A:789:PRO:HB3	2.01	0.42
1:A:122:TYR:HE2	1:A:726:VAL:HG21	1.84	0.42
1:A:155:VAL:O	1:A:155:VAL:HG13	2.19	0.42
1:A:317:THR:O	1:A:321:LEU:HG	2.19	0.42

Continued on next page...

Continued from previous page...

Atom-1	Atom-2	Interatomic distance (Å)	Clash overlap (Å)
1:A:836:ARG:HG2	1:A:984:LEU:HB3	2.01	0.42
1:A:917:SER:HB2	1:A:925:MET:SD	2.60	0.42
1:A:845:GLY:O	1:A:849:VAL:HG23	2.20	0.42
1:A:329:LYS:O	1:A:330:ASN:HB2	2.20	0.42
1:A:82:GLU:N	1:A:82:GLU:OE1	2.52	0.42
1:A:411:VAL:HG22	1:A:454:VAL:HB	2.00	0.42
1:A:457:THR:HG22	1:A:458:GLU:N	2.34	0.42
1:A:462:LEU:HB3	1:A:466:GLU:HB2	2.02	0.42
1:A:380:ASN:C	1:A:380:ASN:HD22	2.23	0.42
1:A:402:ILE:HD13	1:A:402:ILE:N	2.31	0.42
1:A:482:GLU:HG3	1:A:497:TYR:HD1	1.85	0.42
1:A:760:PHE:CD1	1:A:760:PHE:C	2.93	0.42
1:A:740:PHE:O	1:A:743:ILE:HB	2.20	0.41
1:A:579:ASP:HB2	7:A:2049:HOH:O	2.20	0.41
1:A:260:LEU:HD13	4:A:1003:TG1:H252	2.02	0.41
1:A:439:GLU:HG3	1:A:441:THR:H	1.84	0.41
1:A:893:ALA:O	1:A:896:PRO:HD2	2.19	0.41
1:A:290:ARG:HB3	1:A:290:ARG:HH11	1.85	0.41
1:A:395:VAL:O	1:A:401:PRO:HA	2.20	0.41
1:A:39:ASN:OD1	1:A:226:THR:HB	2.21	0.41
1:A:880:HIS:N	1:A:881:PRO:CD	2.83	0.41
1:A:273:LEU:CD2	1:A:276:ILE:HD11	2.51	0.41
1:A:562:LEU:HD12	1:A:562:LEU:HA	1.87	0.41
1:A:656:ARG:HA	1:A:656:ARG:NE	2.36	0.41
1:A:104:VAL:HG21	6:A:1011:PTY:HC11	2.02	0.41
1:A:90:GLU:HB3	1:A:91:PRO:CD	2.51	0.41
1:A:198:ARG:NH1	1:A:198:ARG:HG3	2.36	0.41
1:A:252:LYS:O	1:A:255:GLU:HG2	2.21	0.41
1:A:273:LEU:HA	1:A:276:ILE:HG13	2.03	0.41
1:A:459:VAL:HG12	1:A:470:ALA:HB1	2.03	0.41
1:A:777:LEU:C	1:A:779:ALA:H	2.25	0.41
1:A:816:ILE:HG22	1:A:817:MET:N	2.35	0.41
1:A:99:ILE:O	1:A:103:ILE:HG13	2.21	0.40
1:A:811:PRO:HG3	1:A:929:VAL:CG1	2.51	0.40
1:A:921:SER:N	1:A:989:ARG:NH1	2.62	0.40
1:A:554:THR:O	1:A:554:THR:HG22	2.22	0.40
1:A:773:VAL:O	1:A:777:LEU:HB2	2.21	0.40
1:A:2:GLU:CD	1:A:2:GLU:N	2.71	0.40
1:A:868:HIS:ND1	1:A:868:HIS:O	2.54	0.40
1:A:360:GLN:HB2	7:A:2143:HOH:O	2.20	0.40
1:A:447:THR:HG22	1:A:451:LYS:HE3	2.03	0.40

Continued on next page...

Continued from previous page...

Atom-1	Atom-2	Interatomic distance (Å)	Clash overlap (Å)
1:A:795:VAL:HA	1:A:799:THR:HB	2.04	0.40

There are no symmetry-related clashes.

5.3 Torsion angles [i](#)

5.3.1 Protein backbone [i](#)

In the following table, the Percentiles column shows the percent Ramachandran outliers of the chain as a percentile score with respect to all X-ray entries followed by that with respect to entries of similar resolution.

The Analysed column shows the number of residues for which the backbone conformation was analysed, and the total number of residues.

Mol	Chain	Analysed	Favoured	Allowed	Outliers	Percentiles
1	A	993/995 (100%)	927 (93%)	56 (6%)	10 (1%)	15 14

All (10) Ramachandran outliers are listed below:

Mol	Chain	Res	Type
1	A	456	ASN
1	A	951	ASP
1	A	858	TYR
1	A	869	GLN
1	A	950	VAL
1	A	470	ALA
1	A	82	GLU
1	A	581	SER
1	A	578	LEU
1	A	433	VAL

5.3.2 Protein sidechains [i](#)

In the following table, the Percentiles column shows the percent sidechain outliers of the chain as a percentile score with respect to all X-ray entries followed by that with respect to entries of similar resolution.

The Analysed column shows the number of residues for which the sidechain conformation was analysed, and the total number of residues.

Mol	Chain	Analysed	Rotameric	Outliers	Percentiles
1	A	840/840 (100%)	808 (96%)	32 (4%)	33 42

All (32) residues with a non-rotameric sidechain are listed below:

Mol	Chain	Res	Type
1	A	2	GLU
1	A	60	LEU
1	A	109	GLU
1	A	113	GLU
1	A	139	ARG
1	A	164	ARG
1	A	266	LEU
1	A	319	LEU
1	A	328	LYS
1	A	341	THR
1	A	359	ASN
1	A	371	LYS
1	A	380	ASN
1	A	396	LEU
1	A	402	ILE
1	A	431	LYS
1	A	445	LEU
1	A	467	ARG
1	A	484	THR
1	A	486	GLU
1	A	519	GLU
1	A	562	LEU
1	A	567	ARG
1	A	604	ARG
1	A	656	ARG
1	A	668	GLU
1	A	685	SER
1	A	739	ASN
1	A	777	LEU
1	A	816	ILE
1	A	819	ARG
1	A	858	TYR

Sometimes sidechains can be flipped to improve hydrogen bonding and reduce clashes. All (18) such sidechains are listed below:

Mol	Chain	Res	Type
1	A	108	GLN

Continued on next page...

Continued from previous page...

Mol	Chain	Res	Type
1	A	250	GLN
1	A	275	ASN
1	A	359	ASN
1	A	380	ASN
1	A	398	ASN
1	A	456	ASN
1	A	461	ASN
1	A	510	ASN
1	A	612	GLN
1	A	628	ASN
1	A	739	ASN
1	A	755	ASN
1	A	875	GLN
1	A	914	ASN
1	A	919	ASN
1	A	966	GLN
1	A	990	ASN

5.3.3 RNA [i](#)

There are no RNA molecules in this entry.

5.4 Non-standard residues in protein, DNA, RNA chains [i](#)

There are no non-standard protein/DNA/RNA residues in this entry.

5.5 Carbohydrates [i](#)

There are no monosaccharides in this entry.

5.6 Ligand geometry [i](#)

Of 7 ligands modelled in this entry, 2 are monoatomic - leaving 5 for Mogul analysis.

In the following table, the Counts columns list the number of bonds (or angles) for which Mogul statistics could be retrieved, the number of bonds (or angles) that are observed in the model and the number of bonds (or angles) that are defined in the Chemical Component Dictionary. The Link column lists molecule types, if any, to which the group is linked. The Z score for a bond length (or angle) is the number of standard deviations the observed value is removed from the expected value. A bond length (or angle) with $|Z| > 2$ is considered an outlier worth inspection. RMSZ is the root-mean-square of all Z scores of the bond lengths (or angles).

Mol	Type	Chain	Res	Link	Bond lengths			Bond angles		
					Counts	RMSZ	# Z > 2	Counts	RMSZ	# Z > 2
6	PTY	A	1013	-	18,18,49	1.21	2 (11%)	21,23,54	1.41	2 (9%)
6	PTY	A	1012	-	18,18,49	1.31	3 (16%)	21,23,54	1.19	2 (9%)
6	PTY	A	1011	-	18,18,49	1.48	4 (22%)	21,23,54	1.40	2 (9%)
5	12D	A	1002	-	32,46,46	2.33	10 (31%)	33,73,73	2.22	9 (27%)
4	TG1	A	1003	-	43,48,48	1.86	11 (25%)	44,72,72	1.78	11 (25%)

In the following table, the Chirals column lists the number of chiral outliers, the number of chiral centers analysed, the number of these observed in the model and the number defined in the Chemical Component Dictionary. Similar counts are reported in the Torsion and Rings columns. '-' means no outliers of that kind were identified.

Mol	Type	Chain	Res	Link	Chirals	Torsions	Rings
6	PTY	A	1013	-	-	11/20/20/53	-
6	PTY	A	1012	-	-	9/20/20/53	-
6	PTY	A	1011	-	-	9/20/20/53	-
5	12D	A	1002	-	2/2/13/15	6/18/74/74	0/5/5/5
4	TG1	A	1003	-	-	3/33/99/99	0/3/3/3

All (30) bond length outliers are listed below:

Mol	Chain	Res	Type	Atoms	Z	Observed(Å)	Ideal(Å)
5	A	1002	12D	O9-C11	6.40	1.51	1.42
4	A	1003	TG1	O4-C21	6.04	1.34	1.21
5	A	1002	12D	O10-C11	5.25	1.49	1.42
5	A	1002	12D	C13-C14	5.06	1.42	1.33
5	A	1002	12D	C10-N5	3.53	1.40	1.35
5	A	1002	12D	C9-N4	3.42	1.40	1.33
6	A	1011	PTY	C1-C6	3.41	1.61	1.50
4	A	1003	TG1	C2-C3	3.39	1.59	1.53
4	A	1003	TG1	C21-C22	3.37	1.61	1.50
5	A	1002	12D	C9-N5	3.31	1.37	1.32
4	A	1003	TG1	C9-C10	3.29	1.59	1.54
4	A	1003	TG1	C1-C5	3.28	1.56	1.51
4	A	1003	TG1	C3-C4	3.13	1.54	1.50
6	A	1012	PTY	C1-C6	2.92	1.59	1.50
5	A	1002	12D	P1-O2	2.87	1.59	1.50
6	A	1011	PTY	P1-O13	2.82	1.60	1.50
4	A	1003	TG1	C31-C10	2.76	1.58	1.52
6	A	1012	PTY	P1-O13	2.66	1.60	1.50
6	A	1012	PTY	C5-C6	2.35	1.57	1.50

Continued on next page...

Continued from previous page...

Mol	Chain	Res	Type	Atoms	Z	Observed(Å)	Ideal(Å)
6	A	1013	PTY	P1-O13	2.34	1.59	1.50
6	A	1011	PTY	C5-C6	2.25	1.57	1.50
5	A	1002	12D	P1-O1	-2.22	1.46	1.54
5	A	1002	12D	C3-C2	-2.22	1.46	1.52
4	A	1003	TG1	O9-C10	2.15	1.52	1.48
4	A	1003	TG1	C9-C8	2.14	1.55	1.52
6	A	1013	PTY	C5-C6	2.14	1.57	1.50
4	A	1003	TG1	C34-C11	2.13	1.56	1.53
6	A	1011	PTY	C2-C3	2.12	1.58	1.50
4	A	1003	TG1	C4-C5	2.10	1.36	1.34
5	A	1002	12D	P1-O3	-2.01	1.47	1.54

All (26) bond angle outliers are listed below:

Mol	Chain	Res	Type	Atoms	Z	Observed(°)	Ideal(°)
5	A	1002	12D	O10-C4-C3	6.81	114.45	103.58
5	A	1002	12D	N5-C9-N4	-5.04	120.79	128.68
4	A	1003	TG1	C10-O9-C32	5.00	133.41	121.53
4	A	1003	TG1	C10-C1-C5	4.37	120.48	115.26
5	A	1002	12D	O8-C5-C4	-3.96	99.72	106.59
5	A	1002	12D	C11-C16-C15	-3.93	120.72	125.11
6	A	1013	PTY	O7-C8-C11	3.76	118.00	111.09
6	A	1011	PTY	O7-C8-C11	3.51	117.54	111.09
4	A	1003	TG1	O7-C8-C9	3.46	112.82	106.63
5	A	1002	12D	C15-C14-N7	3.39	125.48	119.25
4	A	1003	TG1	C24-C22-C21	3.29	133.80	120.78
5	A	1002	12D	O10-C11-C16	-3.00	101.62	109.55
4	A	1003	TG1	O12-C12-C11	-2.93	125.33	128.28
4	A	1003	TG1	O11-C11-C12	-2.88	96.58	106.32
6	A	1011	PTY	O4-C1-C6	2.76	116.45	108.43
4	A	1003	TG1	C11-C7-C6	-2.66	97.90	103.03
4	A	1003	TG1	O5-C12-O12	2.59	125.05	121.62
4	A	1003	TG1	C7-C6-C5	2.57	121.98	115.41
6	A	1012	PTY	O4-C1-C6	2.51	115.73	108.43
5	A	1002	12D	O10-C4-C5	2.36	116.54	109.75
4	A	1003	TG1	C34-C11-C12	2.31	117.28	112.60
6	A	1012	PTY	O7-C8-C11	2.25	115.22	111.09
5	A	1002	12D	C4-C3-C2	2.20	108.94	103.72
4	A	1003	TG1	C31-C10-C9	2.09	114.53	110.29
5	A	1002	12D	O9-C11-C16	2.05	114.98	109.55
6	A	1013	PTY	O12-P1-O11	2.03	117.16	107.75

All (2) chirality outliers are listed below:

Mol	Chain	Res	Type	Atom
5	A	1002	12D	C12
5	A	1002	12D	C11

All (38) torsion outliers are listed below:

Mol	Chain	Res	Type	Atoms
5	A	1002	12D	C13-C14-N7-O13
5	A	1002	12D	C15-C14-N7-O13
6	A	1011	PTY	C11-C8-O7-C6
6	A	1012	PTY	C11-C8-O7-C6
6	A	1013	PTY	N1-C2-C3-O11
6	A	1013	PTY	C5-O14-P1-O11
6	A	1013	PTY	C5-O14-P1-O12
6	A	1013	PTY	C5-O14-P1-O13
6	A	1011	PTY	O10-C8-O7-C6
6	A	1013	PTY	C11-C8-O7-C6
6	A	1012	PTY	C31-C30-O4-C1
6	A	1013	PTY	C31-C30-O4-C1
6	A	1011	PTY	C31-C30-O4-C1
6	A	1013	PTY	O10-C8-O7-C6
6	A	1013	PTY	O30-C30-O4-C1
6	A	1012	PTY	O10-C8-O7-C6
6	A	1012	PTY	O30-C30-O4-C1
6	A	1011	PTY	O30-C30-O4-C1
6	A	1013	PTY	O4-C1-C6-C5
5	A	1002	12D	C11-C12-N6-O11
4	A	1003	TG1	C15-C16-C17-C18
6	A	1012	PTY	O4-C1-C6-O7
5	A	1002	12D	P1-O6-P2-O4
6	A	1012	PTY	C3-O11-P1-O14
6	A	1011	PTY	N1-C2-C3-O11
6	A	1011	PTY	O4-C1-C6-O7
6	A	1013	PTY	O4-C1-C6-O7
6	A	1011	PTY	C3-O11-P1-O14
6	A	1013	PTY	C3-O11-P1-O14
6	A	1012	PTY	O4-C1-C6-C5
5	A	1002	12D	C13-C12-N6-O11
6	A	1011	PTY	O4-C1-C6-C5
5	A	1002	12D	C1-O7-P2-O4
6	A	1011	PTY	C3-O11-P1-O13
6	A	1012	PTY	C3-O11-P1-O13
4	A	1003	TG1	O1-C13-C14-C15

Continued on next page...

Continued from previous page...

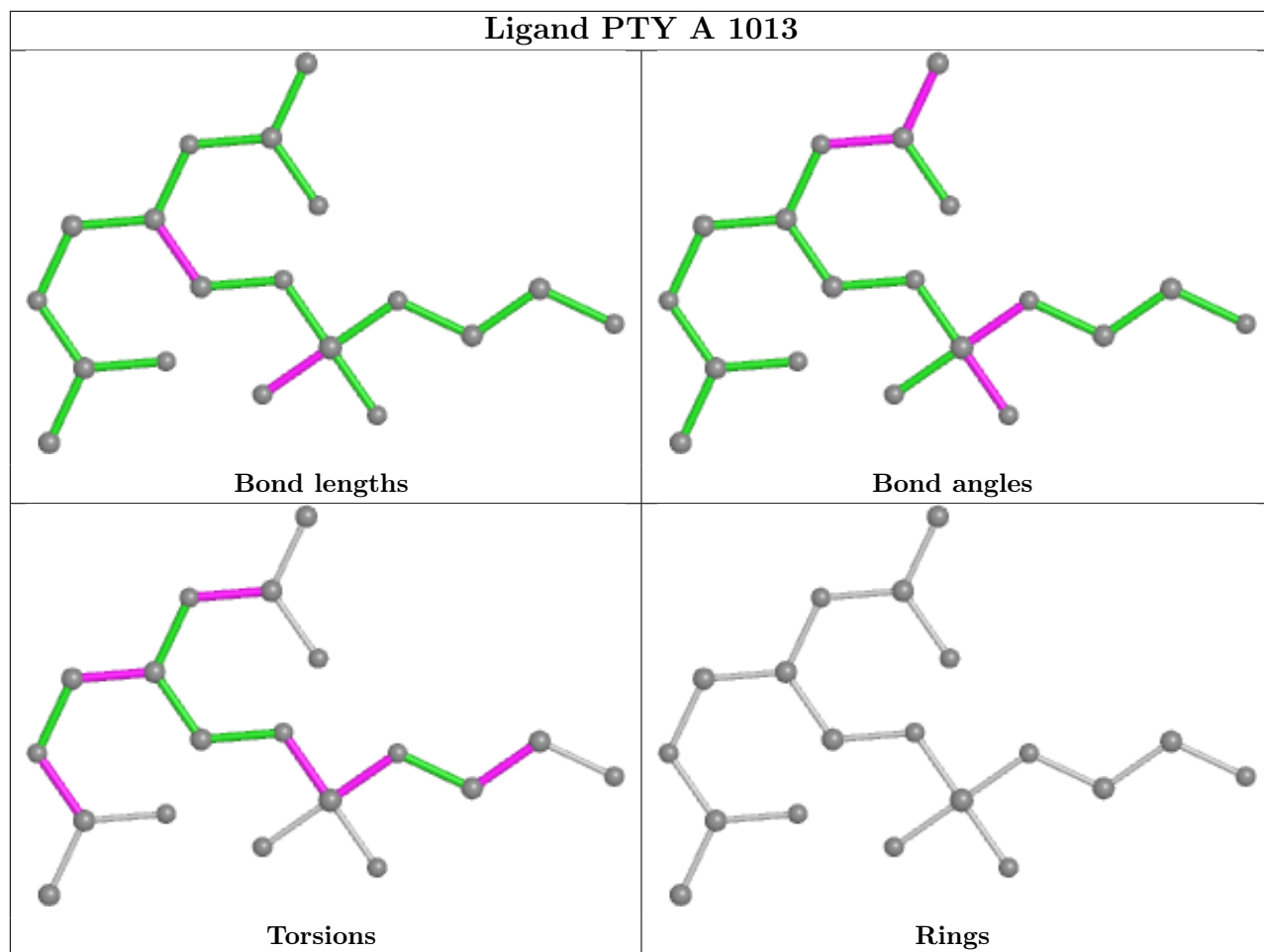
Mol	Chain	Res	Type	Atoms
6	A	1012	PTY	C2-C3-O11-P1
4	A	1003	TG1	O2-C13-C14-C15

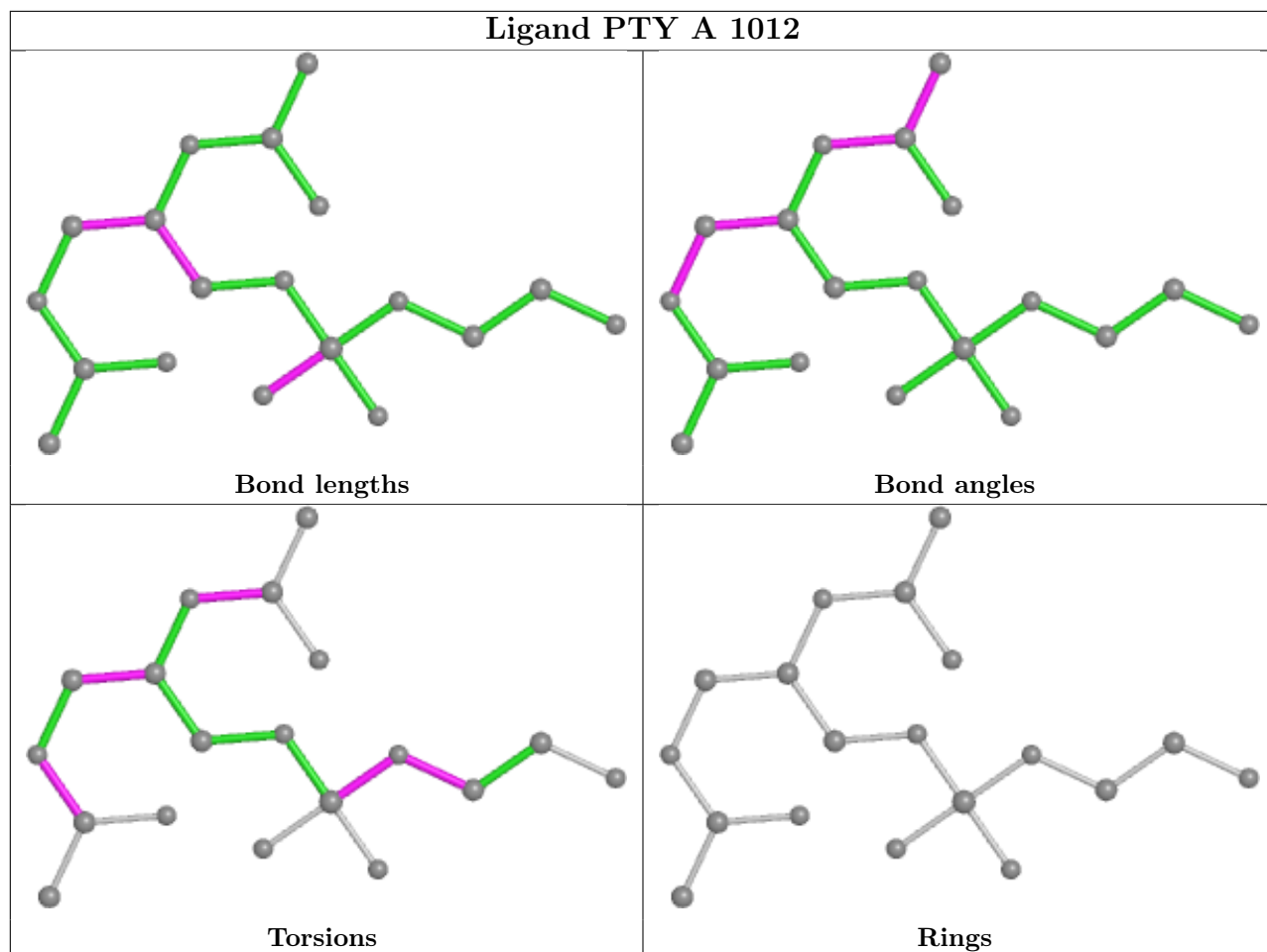
There are no ring outliers.

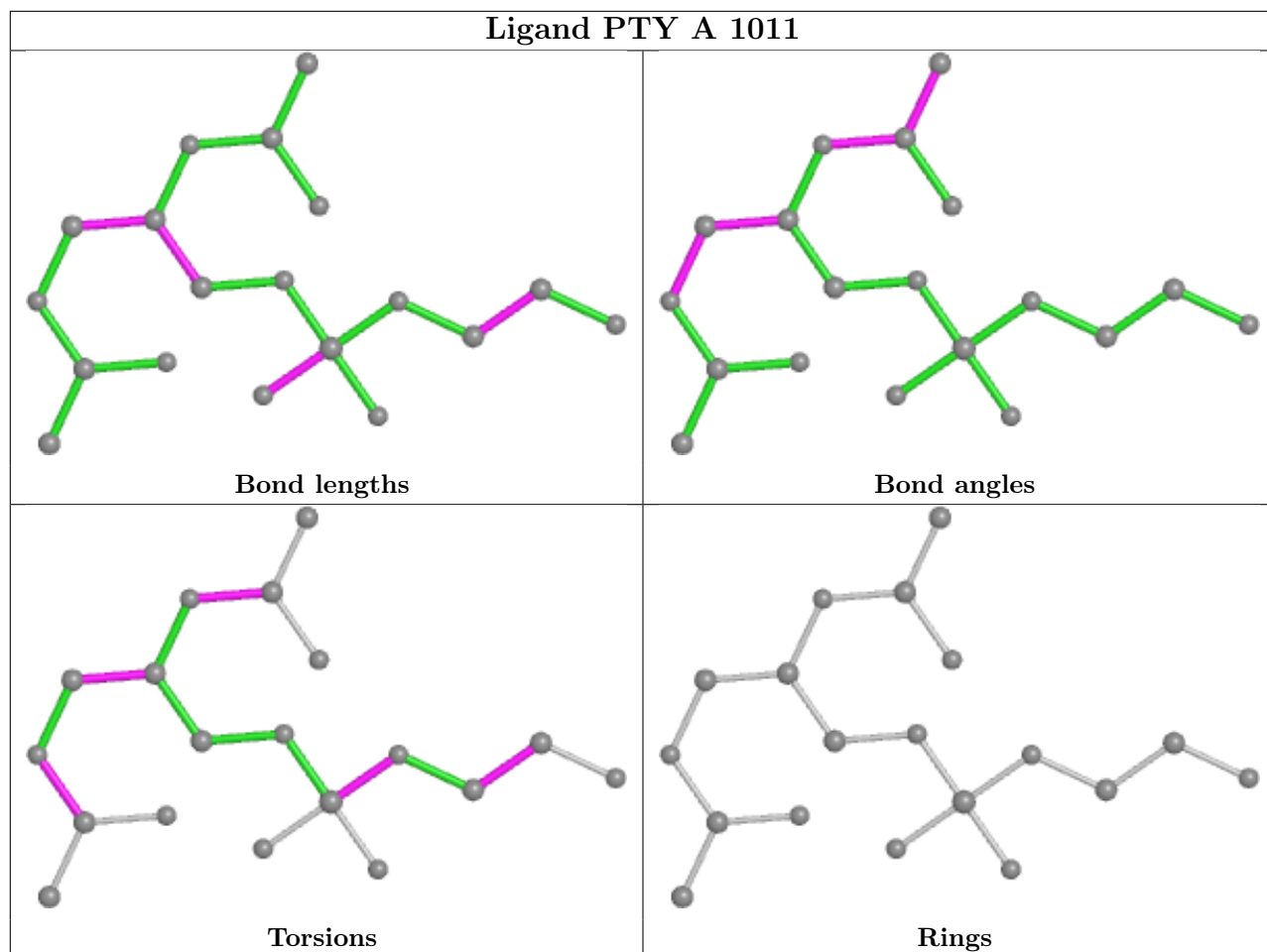
3 monomers are involved in 5 short contacts:

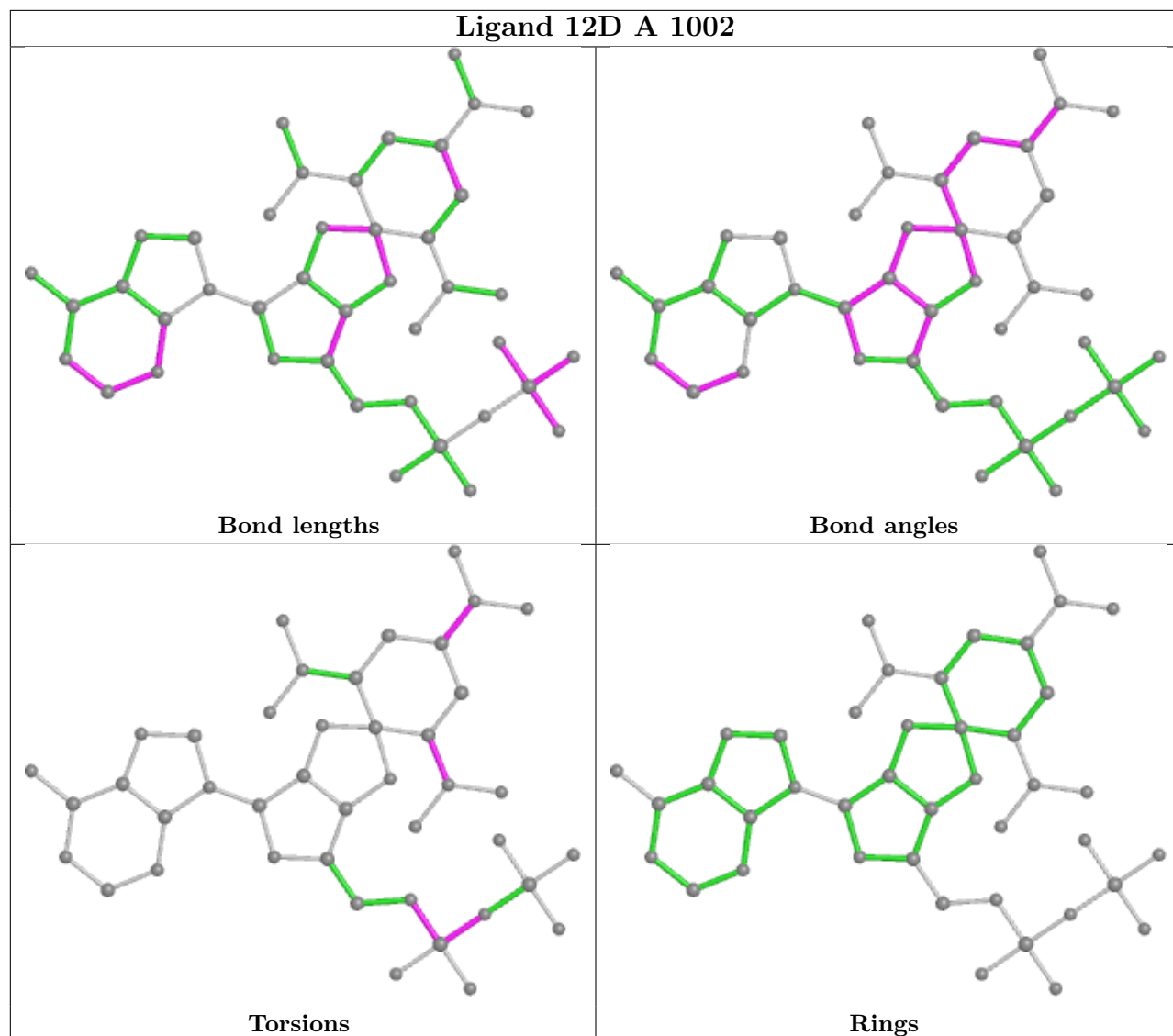
Mol	Chain	Res	Type	Clashes	Symm-Clashes
6	A	1012	PTY	1	0
6	A	1011	PTY	1	0
4	A	1003	TG1	3	0

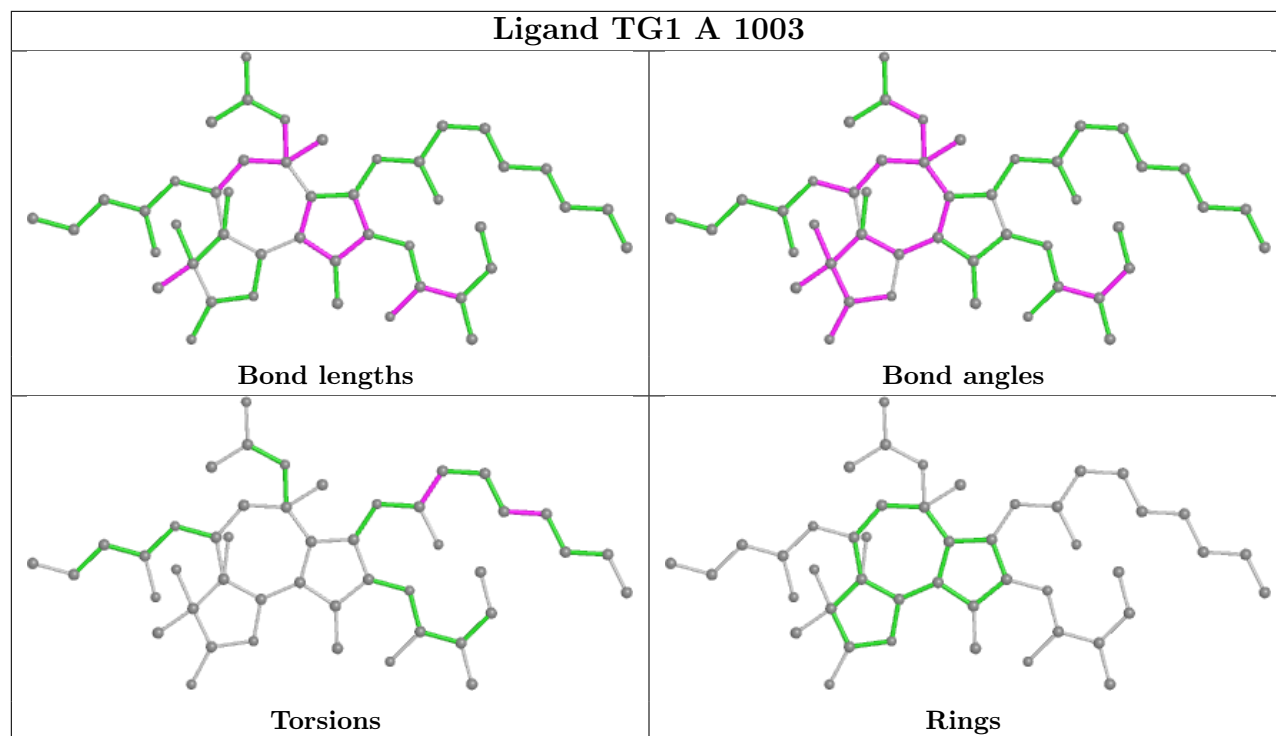
The following is a two-dimensional graphical depiction of Mogul quality analysis of bond lengths, bond angles, torsion angles, and ring geometry for all instances of the Ligand of Interest. In addition, ligands with molecular weight > 250 and outliers as shown on the validation Tables will also be included. For torsion angles, if less than 5% of the Mogul distribution of torsion angles is within 10 degrees of the torsion angle in question, then that torsion angle is considered an outlier. Any bond that is central to one or more torsion angles identified as an outlier by Mogul will be highlighted in the graph. For rings, the root-mean-square deviation (RMSD) between the ring in question and similar rings identified by Mogul is calculated over all ring torsion angles. If the average RMSD is greater than 60 degrees and the minimal RMSD between the ring in question and any Mogul-identified rings is also greater than 60 degrees, then that ring is considered an outlier. The outliers are highlighted in purple. The color gray indicates Mogul did not find sufficient equivalents in the CSD to analyse the geometry.











5.7 Other polymers [i](#)

There are no such residues in this entry.

5.8 Polymer linkage issues [i](#)

There are no chain breaks in this entry.

6 Fit of model and data

6.1 Protein, DNA and RNA chains

In the following table, the column labelled ‘#RSRZ> 2’ contains the number (and percentage) of RSRZ outliers, followed by percent RSRZ outliers for the chain as percentile scores relative to all X-ray entries and entries of similar resolution. The OWAB column contains the minimum, median, 95th percentile and maximum values of the occupancy-weighted average B-factor per residue. The column labelled ‘Q< 0.9’ lists the number of (and percentage) of residues with an average occupancy less than 0.9.

Mol	Chain	Analysed	<RSRZ>	#RSRZ>2	OWAB(Å ²)	Q<0.9
1	A	994/995 (99%)	0.47	89 (8%) 9 8	30, 56, 118, 145	0

All (89) RSRZ outliers are listed below:

Mol	Chain	Res	Type	RSRZ
1	A	505	ARG	13.0
1	A	883	PHE	12.0
1	A	85	ILE	10.8
1	A	504	SER	9.4
1	A	886	LEU	9.4
1	A	86	THR	9.4
1	A	77	TRP	8.7
1	A	433	VAL	8.4
1	A	506	ALA	8.1
1	A	885	GLY	7.7
1	A	78	PHE	7.3
1	A	430	THR	7.0
1	A	427	PHE	6.7
1	A	459	VAL	6.7
1	A	508	VAL	6.7
1	A	431	LYS	6.7
1	A	426	ASP	6.5
1	A	503	SER	6.4
1	A	80	GLU	6.4
1	A	507	ALA	6.4
1	A	84	THR	5.9
1	A	866	THR	5.8
1	A	428	ASN	5.7
1	A	881	PRO	5.6
1	A	870	LEU	5.4
1	A	884	GLU	5.3
1	A	435	GLU	4.8

Continued on next page...

Continued from previous page...

Mol	Chain	Res	Type	RSRZ
1	A	434	TYR	4.7
1	A	464	LYS	4.6
1	A	890	ILE	4.6
1	A	993	GLU	4.5
1	A	873	PHE	4.5
1	A	887	ASP	4.5
1	A	432	GLY	4.4
1	A	465	VAL	4.4
1	A	287	SER	4.3
1	A	81	GLY	4.3
1	A	467	ARG	4.2
1	A	856	PHE	4.1
1	A	880	HIS	3.8
1	A	82	GLU	3.8
1	A	875	GLN	3.8
1	A	877	THR	3.7
1	A	289	ILE	3.7
1	A	502	LYS	3.7
1	A	425	LEU	3.6
1	A	861	ASP	3.5
1	A	429	GLU	3.4
1	A	509	GLY	3.4
1	A	79	GLU	3.2
1	A	865	VAL	3.2
1	A	888	CYS	3.2
1	A	466	GLU	3.1
1	A	283	VAL	3.0
1	A	994	GLY	2.8
1	A	871	THR	2.8
1	A	889	GLU	2.8
1	A	284	HIS	2.7
1	A	882	HIS	2.7
1	A	290	ARG	2.7
1	A	106	VAL	2.7
1	A	864	GLY	2.7
1	A	474	VAL	2.6
1	A	894	PRO	2.6
1	A	858	TYR	2.6
1	A	288	TRP	2.5
1	A	83	GLU	2.5
1	A	891	PHE	2.5
1	A	187	VAL	2.4

Continued on next page...

Continued from previous page...

Mol	Chain	Res	Type	RSRZ
1	A	462	LEU	2.4
1	A	679	VAL	2.3
1	A	960	LYS	2.3
1	A	855	TRP	2.3
1	A	285	GLY	2.3
1	A	50	TRP	2.2
1	A	991	TYR	2.2
1	A	179	ILE	2.2
1	A	955	MET	2.2
1	A	46	GLY	2.2
1	A	867	TYR	2.1
1	A	992	LEU	2.1
1	A	88	PHE	2.1
1	A	878	GLU	2.1
1	A	278	HIS	2.0
1	A	293	ILE	2.0
1	A	488	SER	2.0
1	A	541	VAL	2.0
1	A	869	GLN	2.0
1	A	87	ALA	2.0

6.2 Non-standard residues in protein, DNA, RNA chains [i](#)

There are no non-standard protein/DNA/RNA residues in this entry.

6.3 Carbohydrates [i](#)

There are no monosaccharides in this entry.

6.4 Ligands [i](#)

In the following table, the Atoms column lists the number of modelled atoms in the group and the number defined in the chemical component dictionary. The B-factors column lists the minimum, median, 95th percentile and maximum values of B factors of atoms in the group. The column labelled 'Q< 0.9' lists the number of atoms with occupancy less than 0.9.

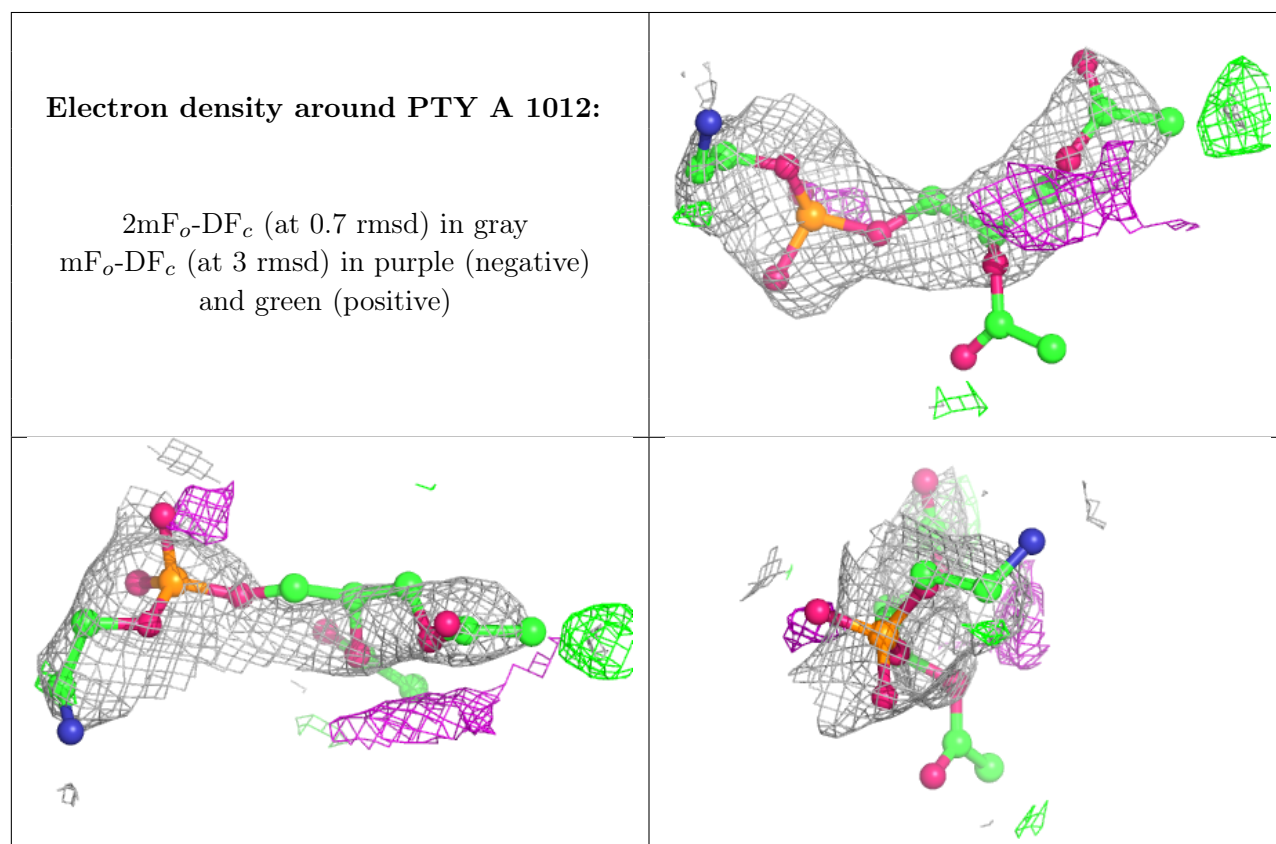
Mol	Type	Chain	Res	Atoms	RSCC	RSR	B-factors(Å ²)	Q<0.9
6	PTY	A	1012	19/50	0.71	0.35	113,120,123,125	0
6	PTY	A	1011	19/50	0.78	0.22	108,110,113,114	0
6	PTY	A	1013	19/50	0.79	0.17	85,92,97,97	0

Continued on next page...

Continued from previous page...

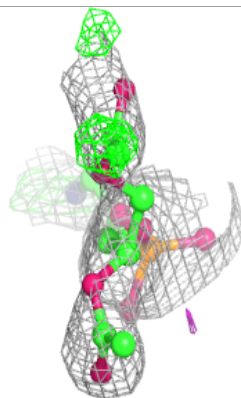
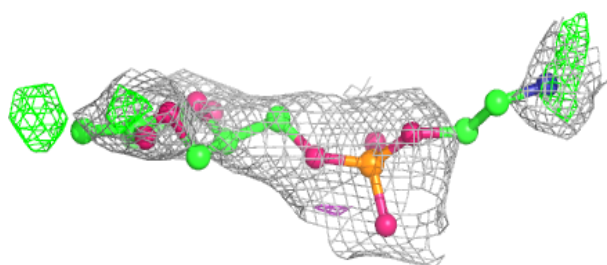
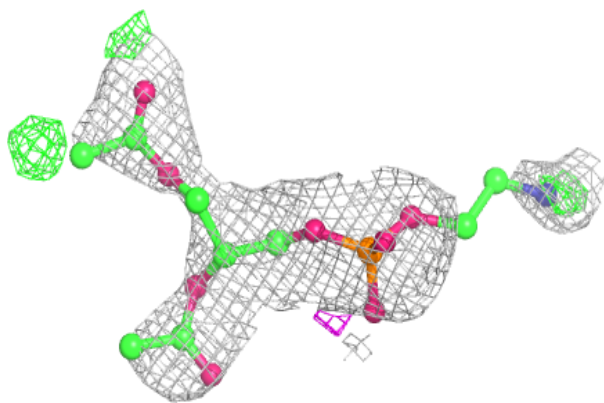
Mol	Type	Chain	Res	Atoms	RSCC	RSR	B-factors(\AA^2)	Q<0.9
3	MG	A	998	1/1	0.89	0.21	62,62,62,62	0
4	TG1	A	1003	46/46	0.94	0.14	53,60,73,76	0
5	12D	A	1002	42/42	0.95	0.19	48,59,72,76	0
2	NA	A	1000	1/1	0.96	0.14	52,52,52,52	0

The following is a graphical depiction of the model fit to experimental electron density of all instances of the Ligand of Interest. In addition, ligands with molecular weight > 250 and outliers as shown on the geometry validation Tables will also be included. Each fit is shown from different orientation to approximate a three-dimensional view.

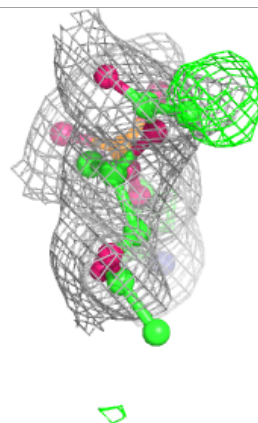
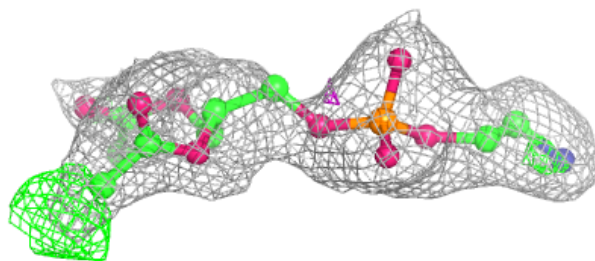
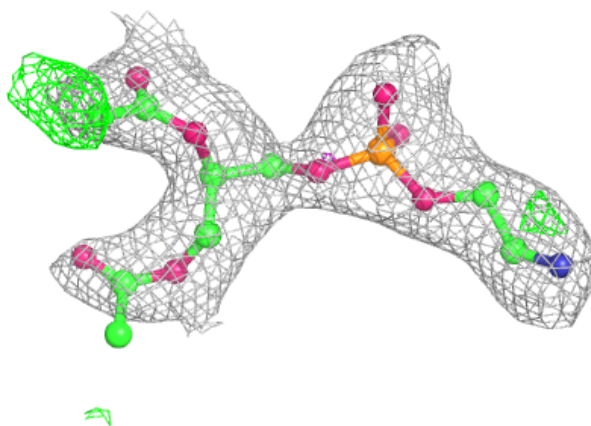


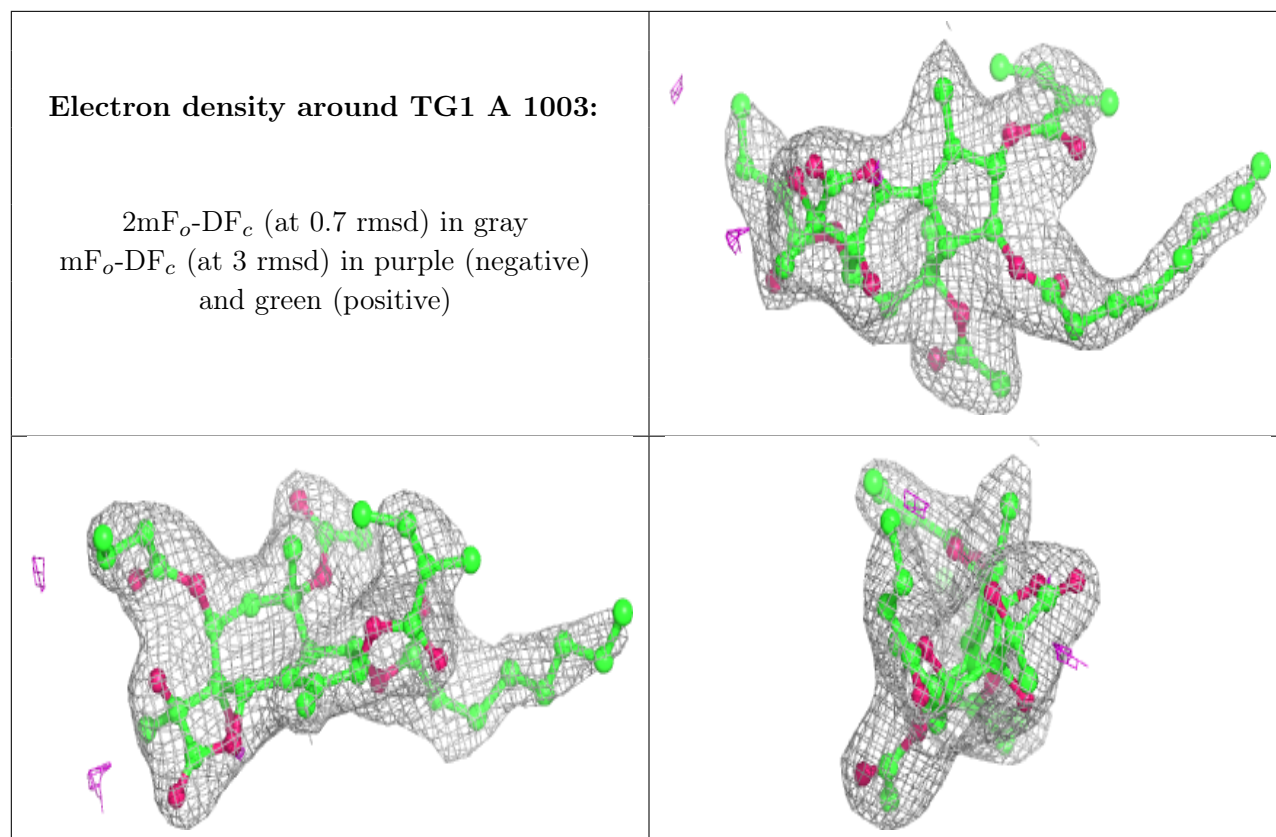
Electron density around PTY A 1011:

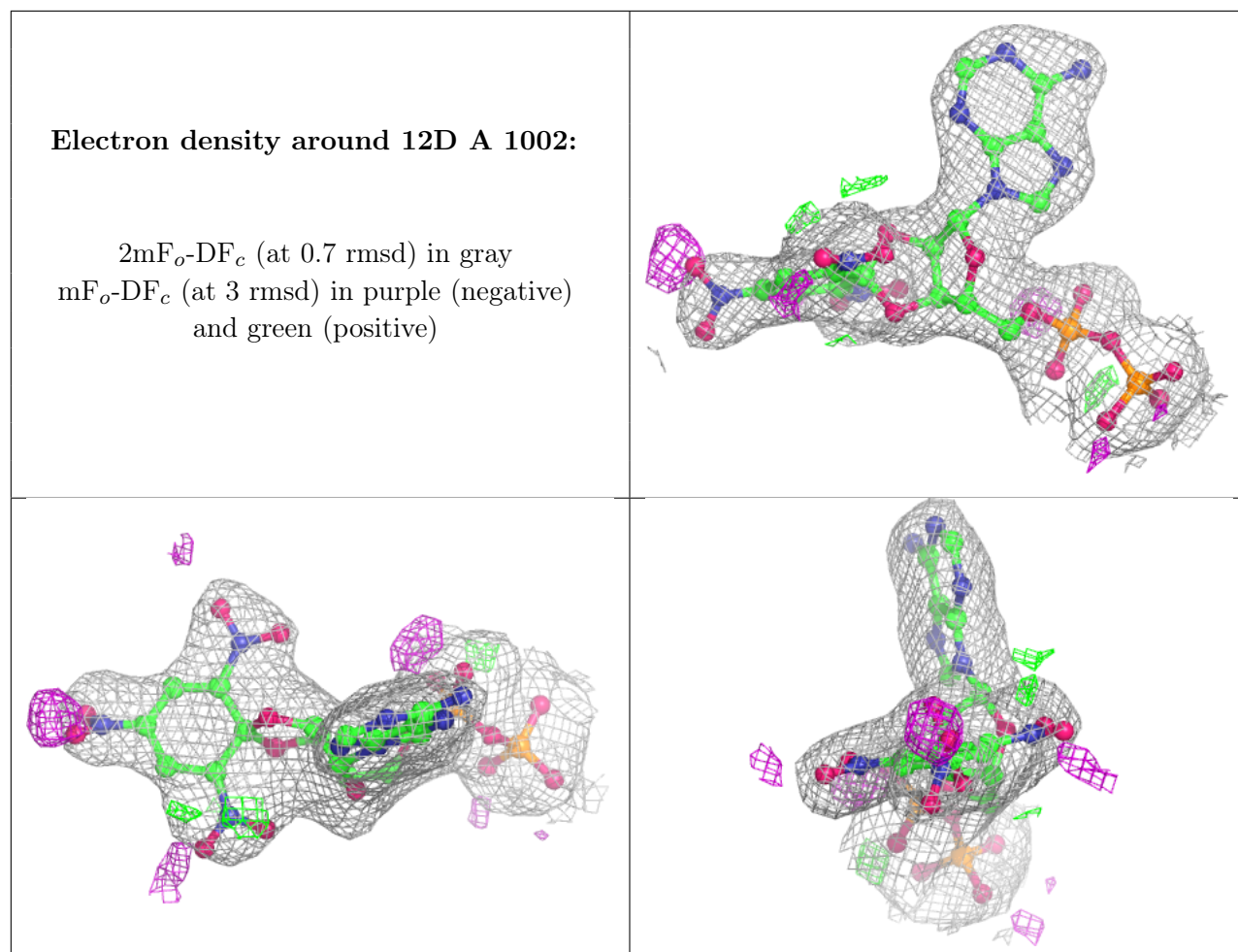
$2mF_o-DF_c$ (at 0.7 rmsd) in gray
 mF_o-DF_c (at 3 rmsd) in purple (negative)
and green (positive)

**Electron density around PTY A 1013:**

$2mF_o-DF_c$ (at 0.7 rmsd) in gray
 mF_o-DF_c (at 3 rmsd) in purple (negative)
and green (positive)







6.5 Other polymers [i](#)

There are no such residues in this entry.