



Full wwPDB X-ray Structure Validation Report ⓘ

Aug 16, 2023 – 03:35 PM EDT

PDB ID : 2AIQ
Title : Crystal structure of benzamidine-inhibited protein C activator from the venom of copperhead snake *Agkistrodon contortrix contortrix*
Authors : Murakami, M.T.; Arni, R.K.
Deposited on : 2005-07-30
Resolution : 1.54 Å (reported)

This is a Full wwPDB X-ray Structure Validation Report for a publicly released PDB entry.

We welcome your comments at validation@mail.wwpdb.org

A user guide is available at

<https://www.wwpdb.org/validation/2017/XrayValidationReportHelp>

with specific help available everywhere you see the ⓘ symbol.

The types of validation reports are described at

<http://www.wwpdb.org/validation/2017/FAQs#types>.

The following versions of software and data (see [references ⓘ](#)) were used in the production of this report:

MolProbity : 4.02b-467
Mogul : 1.8.5 (274361), CSD as541be (2020)
Xtriage (Phenix) : 1.13
EDS : 2.35
Percentile statistics : 20191225.v01 (using entries in the PDB archive December 25th 2019)
Refmac : 5.8.0158
CCP4 : 7.0.044 (Gargrove)
Ideal geometry (proteins) : Engh & Huber (2001)
Ideal geometry (DNA, RNA) : Parkinson et al. (1996)
Validation Pipeline (wwPDB-VP) : 2.35

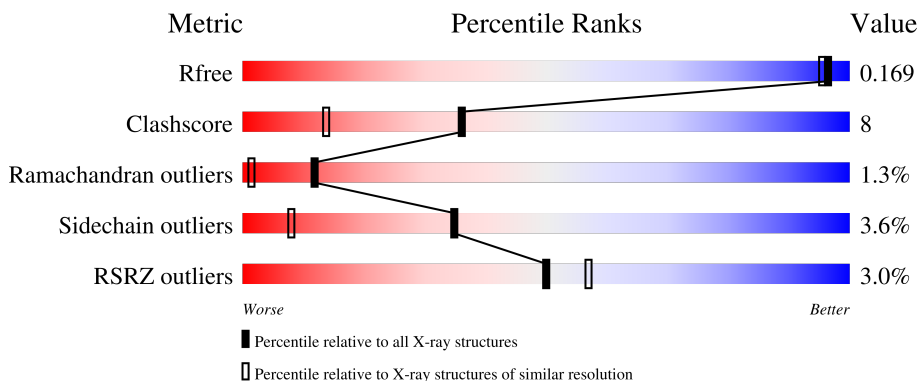
1 Overall quality at a glance

The following experimental techniques were used to determine the structure:

X-RAY DIFFRACTION

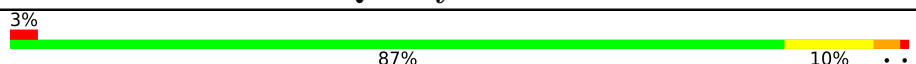
The reported resolution of this entry is 1.54 Å.

Percentile scores (ranging between 0-100) for global validation metrics of the entry are shown in the following graphic. The table shows the number of entries on which the scores are based.



Metric	Whole archive (#Entries)	Similar resolution (#Entries, resolution range(Å))
R_{free}	130704	2556 (1.56-1.52)
Clashscore	141614	2634 (1.56-1.52)
Ramachandran outliers	138981	2580 (1.56-1.52)
Sidechain outliers	138945	2577 (1.56-1.52)
RSRZ outliers	127900	2524 (1.56-1.52)

The table below summarises the geometric issues observed across the polymeric chains and their fit to the electron density. The red, orange, yellow and green segments of the lower bar indicate the fraction of residues that contain outliers for ≥ 3 , 2, 1 and 0 types of geometric quality criteria respectively. A grey segment represents the fraction of residues that are not modelled. The numeric value for each fraction is indicated below the corresponding segment, with a dot representing fractions $\leq 5\%$. The upper red bar (where present) indicates the fraction of residues that have poor fit to the electron density. The numeric value is given above the bar.

Mol	Chain	Length	Quality of chain
1	A	231	

The following table lists non-polymeric compounds, carbohydrate monomers and non-standard residues in protein, DNA, RNA chains that are outliers for geometric or electron-density-fit criteria:

Mol	Type	Chain	Res	Chirality	Geometry	Clashes	Electron density
2	NAG	A	701	X	-	-	X

Continued on next page...

Continued from previous page...

Mol	Type	Chain	Res	Chirality	Geometry	Clashes	Electron density
2	NAG	A	801	-	-	-	X
2	NAG	A	901	X	-	-	X

2 Entry composition [i](#)

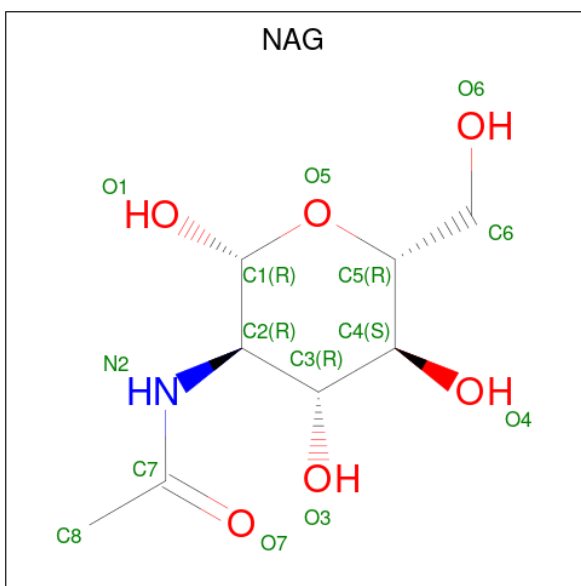
There are 8 unique types of molecules in this entry. The entry contains 2067 atoms, of which 0 are hydrogens and 0 are deuteriums.

In the tables below, the ZeroOcc column contains the number of atoms modelled with zero occupancy, the AltConf column contains the number of residues with at least one atom in alternate conformation and the Trace column contains the number of residues modelled with at most 2 atoms.

- Molecule 1 is a protein called Protein C activator.

Mol	Chain	Residues	Atoms					ZeroOcc	AltConf	Trace
			Total	C	N	O	S			
1	A	231	1771	1110	316	329	16	0	6	0

- Molecule 2 is 2-acetamido-2-deoxy-beta-D-glucopyranose (three-letter code: NAG) (formula: $C_8H_{15}NO_6$).



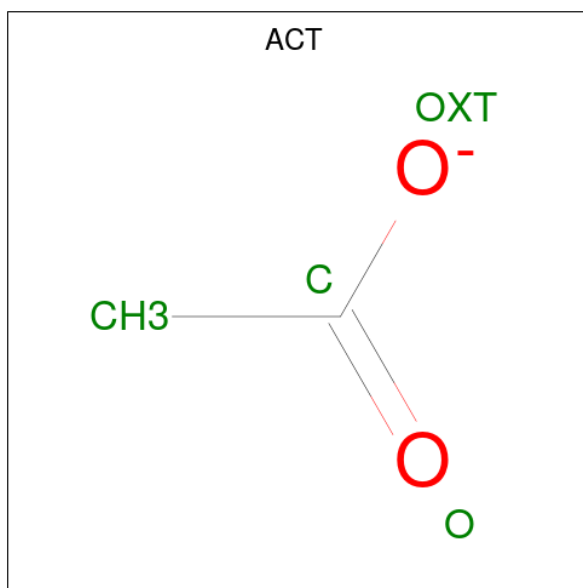
Mol	Chain	Residues	Atoms				ZeroOcc	AltConf
			Total	C	N	O		
2	A	1	14	8	1	5	0	0
2	A	1	14	8	1	5	0	0
2	A	1	14	8	1	5	0	0

- Molecule 3 is SULFATE ION (three-letter code: SO4) (formula: O_4S).



Mol	Chain	Residues	Atoms			ZeroOcc	AltConf
3	A	1	Total	O	S	0	0
			5	4	1		

- Molecule 4 is ACETATE ION (three-letter code: ACT) (formula: C₂H₃O₂).

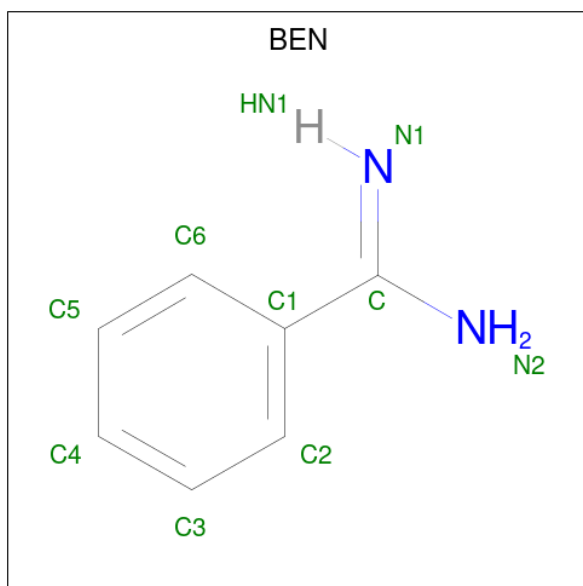


Mol	Chain	Residues	Atoms			ZeroOcc	AltConf
4	A	1	Total	C	O	0	0
			4	2	2		

- Molecule 5 is CHLORIDE ION (three-letter code: CL) (formula: Cl).

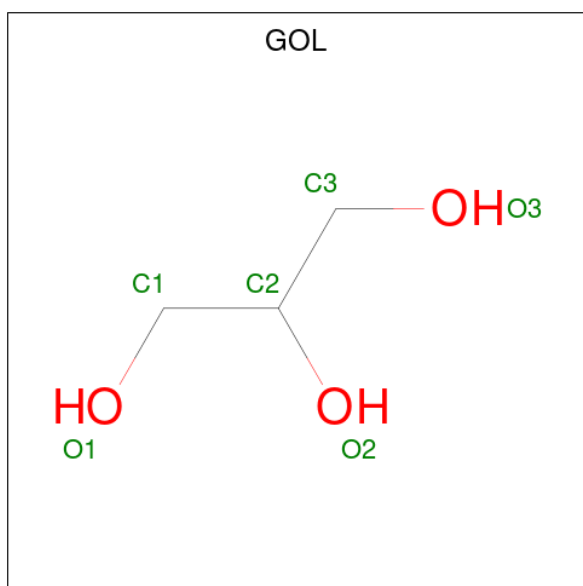
Mol	Chain	Residues	Atoms	ZeroOcc	AltConf
5	A	1	Total Cl 1 1	0	0

- Molecule 6 is BENZAMIDINE (three-letter code: BEN) (formula: $C_7H_8N_2$).



Mol	Chain	Residues	Atoms	ZeroOcc	AltConf
6	A	1	Total C N 9 7 2	0	0

- Molecule 7 is GLYCEROL (three-letter code: GOL) (formula: $C_3H_8O_3$).



Mol	Chain	Residues	Atoms			ZeroOcc	AltConf
7	A	1	Total	C	O	0	0
			6	3	3		

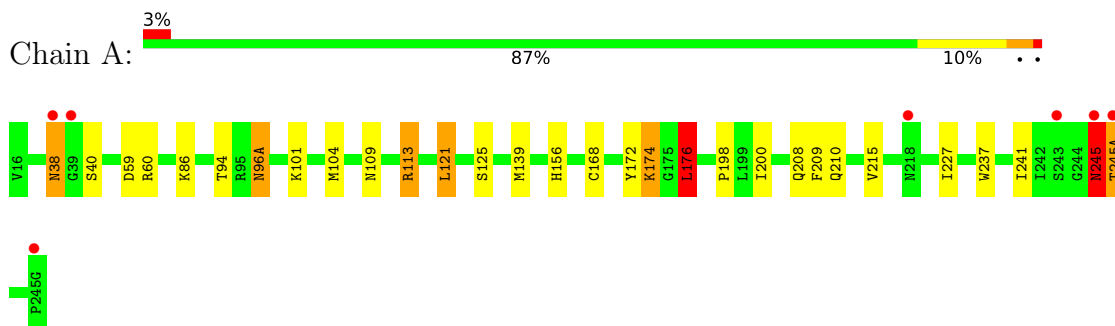
- Molecule 8 is water.

Mol	Chain	Residues	Atoms		ZeroOcc	AltConf
8	A	229	Total	O	0	0
			229	229		

3 Residue-property plots [i](#)

These plots are drawn for all protein, RNA, DNA and oligosaccharide chains in the entry. The first graphic for a chain summarises the proportions of the various outlier classes displayed in the second graphic. The second graphic shows the sequence view annotated by issues in geometry and electron density. Residues are color-coded according to the number of geometric quality criteria for which they contain at least one outlier: green = 0, yellow = 1, orange = 2 and red = 3 or more. A red dot above a residue indicates a poor fit to the electron density ($RSRZ > 2$). Stretches of 2 or more consecutive residues without any outlier are shown as a green connector. Residues present in the sample, but not in the model, are shown in grey.

- Molecule 1: Protein C activator



4 Data and refinement statistics

Property	Value	Source
Space group	C 1 2 1	Depositor
Cell constants a, b, c, α , β , γ	80.52Å 63.46Å 48.22Å 90.00° 99.85° 90.00°	Depositor
Resolution (Å)	20.58 – 1.54 20.58 – 1.54	Depositor EDS
% Data completeness (in resolution range)	99.8 (20.58-1.54) 99.7 (20.58-1.54)	Depositor EDS
R_{merge}	0.08	Depositor
R_{sym}	(Not available)	Depositor
$\langle I/\sigma(I) \rangle$ ¹	2.75 (at 1.54Å)	Xtrriage
Refinement program	REFMAC 5.2.0005	Depositor
R, R_{free}	0.168 , 0.191 0.168 , 0.169	Depositor DCC
R_{free} test set	1761 reflections (4.97%)	wwPDB-VP
Wilson B-factor (Å ²)	14.7	Xtrriage
Anisotropy	0.047	Xtrriage
Bulk solvent k_{sol} (e/Å ³), B_{sol} (Å ²)	0.40 , 54.6	EDS
L-test for twinning ²	$\langle L \rangle = 0.50$, $\langle L^2 \rangle = 0.34$	Xtrriage
Estimated twinning fraction	No twinning to report.	Xtrriage
F_o, F_c correlation	0.97	EDS
Total number of atoms	2067	wwPDB-VP
Average B, all atoms (Å ²)	17.0	wwPDB-VP

Xtrriage's analysis on translational NCS is as follows: *The largest off-origin peak in the Patterson function is 7.40% of the height of the origin peak. No significant pseudotranslation is detected.*

¹Intensities estimated from amplitudes.

²Theoretical values of $\langle |L| \rangle$, $\langle L^2 \rangle$ for acentric reflections are 0.5, 0.333 respectively for untwinned datasets, and 0.375, 0.2 for perfectly twinned datasets.

5 Model quality i

5.1 Standard geometry i

Bond lengths and bond angles in the following residue types are not validated in this section: NAG, ACT, SO4, CL, GOL, BEN

The Z score for a bond length (or angle) is the number of standard deviations the observed value is removed from the expected value. A bond length (or angle) with $|Z| > 5$ is considered an outlier worth inspection. RMSZ is the root-mean-square of all Z scores of the bond lengths (or angles).

Mol	Chain	Bond lengths		Bond angles	
		RMSZ	# $ Z > 5$	RMSZ	# $ Z > 5$
1	A	0.48	0/1841	0.71	1/2503 (0.0%)

Chiral center outliers are detected by calculating the chiral volume of a chiral center and verifying if the center is modelled as a planar moiety or with the opposite hand. A planarity outlier is detected by checking planarity of atoms in a peptide group, atoms in a mainchain group or atoms of a sidechain that are expected to be planar.

Mol	Chain	#Chirality outliers	#Planarity outliers
1	A	0	1

There are no bond length outliers.

All (1) bond angle outliers are listed below:

Mol	Chain	Res	Type	Atoms	Z	Observed($^{\circ}$)	Ideal($^{\circ}$)
1	A	176	LEU	CA-CB-CG	6.07	129.27	115.30

There are no chirality outliers.

All (1) planarity outliers are listed below:

Mol	Chain	Res	Type	Group
1	A	245	ASN	Peptide

5.2 Too-close contacts i

In the following table, the Non-H and H(model) columns list the number of non-hydrogen atoms and hydrogen atoms in the chain respectively. The H(added) column lists the number of hydrogen atoms added and optimized by MolProbity. The Clashes column lists the number of clashes within the asymmetric unit, whereas Symm-Clashes lists symmetry-related clashes.

Mol	Chain	Non-H	H(model)	H(added)	Clashes	Symm-Clashes
1	A	1771	0	1735	29	0
2	A	42	0	39	1	0
3	A	5	0	0	0	0
4	A	4	0	3	0	0
5	A	1	0	0	0	0
6	A	9	0	7	0	0
7	A	6	0	8	0	0
8	A	229	0	0	2	0
All	All	2067	0	1792	29	0

The all-atom clashscore is defined as the number of clashes found per 1000 atoms (including hydrogen atoms). The all-atom clashscore for this structure is 8.

All (29) close contacts within the same asymmetric unit are listed below, sorted by their clash magnitude.

Atom-1	Atom-2	Interatomic distance (Å)	Clash overlap (Å)
1:A:125:SER:H	1:A:208:GLN:HE22	1.35	0.75
1:A:121:LEU:HD13	1:A:209:PHE:HB2	1.75	0.69
1:A:113:ARG:CG	1:A:113:ARG:HH21	2.08	0.67
1:A:59:ASP:HB2	1:A:104[B]:MET:HE1	1.77	0.66
1:A:125:SER:H	1:A:208:GLN:NE2	1.96	0.63
1:A:215:VAL:HG23	1:A:227:ILE:HD12	1.83	0.60
1:A:121:LEU:HD11	1:A:200:ILE:HD12	1.83	0.59
1:A:172:TYR:CD2	1:A:227:ILE:HD11	2.37	0.59
1:A:113:ARG:HH21	1:A:113:ARG:HG2	1.68	0.57
1:A:121:LEU:CD1	1:A:200:ILE:HD12	2.36	0.56
1:A:40:SER:CB	1:A:60:ARG:HD2	2.38	0.53
1:A:208:GLN:NE2	8:A:1102:HOH:O	2.42	0.52
1:A:113:ARG:HG2	1:A:113:ARG:NH2	2.27	0.50
1:A:198:PRO:HB2	1:A:200:ILE:HD11	1.94	0.50
1:A:40:SER:HB2	8:A:1223:HOH:O	2.12	0.49
1:A:38:ASN:HB3	1:A:60:ARG:O	2.15	0.47
1:A:86:LYS:HB2	1:A:109:ASN:HA	1.97	0.45
1:A:59:ASP:HB2	1:A:104[B]:MET:CE	2.46	0.45
1:A:237:TRP:CE2	1:A:241[B]:ILE:HD11	2.51	0.45
1:A:96(A):ASN:OD1	2:A:801:NAG:N2	2.49	0.44
1:A:245:ASN:C	1:A:245(A):THR:O	2.54	0.44
1:A:94:THR:HG22	1:A:101:LYS:HB2	2.01	0.43
1:A:168:CYS:HB3	1:A:176:LEU:HD11	2.01	0.41
1:A:113:ARG:CG	1:A:113:ARG:NH2	2.74	0.41
1:A:139:MET:HA	1:A:156:HIS:O	2.21	0.41
1:A:40:SER:HB2	1:A:60:ARG:HH21	1.85	0.40

Continued on next page...

Continued from previous page...

Atom-1	Atom-2	Interatomic distance (Å)	Clash overlap (Å)
1:A:174:LYS:H	1:A:174:LYS:HG3	1.58	0.40

There are no symmetry-related clashes.

5.3 Torsion angles [i](#)

5.3.1 Protein backbone [i](#)

In the following table, the Percentiles column shows the percent Ramachandran outliers of the chain as a percentile score with respect to all X-ray entries followed by that with respect to entries of similar resolution.

The Analysed column shows the number of residues for which the backbone conformation was analysed, and the total number of residues.

Mol	Chain	Analysed	Favoured	Allowed	Outliers	Percentiles
1	A	235/231 (102%)	222 (94%)	10 (4%)	3 (1%)	12 1

All (3) Ramachandran outliers are listed below:

Mol	Chain	Res	Type
1	A	245	ASN
1	A	38	ASN
1	A	245(A)	THR

5.3.2 Protein sidechains [i](#)

In the following table, the Percentiles column shows the percent sidechain outliers of the chain as a percentile score with respect to all X-ray entries followed by that with respect to entries of similar resolution.

The Analysed column shows the number of residues for which the sidechain conformation was analysed, and the total number of residues.

Mol	Chain	Analysed	Rotameric	Outliers	Percentiles
1	A	198/192 (103%)	191 (96%)	7 (4%)	36 8

All (7) residues with a non-rotameric sidechain are listed below:

Mol	Chain	Res	Type
1	A	96(A)	ASN
1	A	113	ARG
1	A	121	LEU
1	A	174	LYS
1	A	176	LEU
1	A	210	GLN
1	A	245	ASN

Sometimes sidechains can be flipped to improve hydrogen bonding and reduce clashes. All (3) such sidechains are listed below:

Mol	Chain	Res	Type
1	A	208	GLN
1	A	210	GLN
1	A	239	GLN

5.3.3 RNA [i](#)

There are no RNA molecules in this entry.

5.4 Non-standard residues in protein, DNA, RNA chains [i](#)

There are no non-standard protein/DNA/RNA residues in this entry.

5.5 Carbohydrates [i](#)

There are no monosaccharides in this entry.

5.6 Ligand geometry [i](#)

Of 8 ligands modelled in this entry, 1 is monoatomic - leaving 7 for Mogul analysis.

In the following table, the Counts columns list the number of bonds (or angles) for which Mogul statistics could be retrieved, the number of bonds (or angles) that are observed in the model and the number of bonds (or angles) that are defined in the Chemical Component Dictionary. The Link column lists molecule types, if any, to which the group is linked. The Z score for a bond length (or angle) is the number of standard deviations the observed value is removed from the expected value. A bond length (or angle) with $|Z| > 2$ is considered an outlier worth inspection. RMSZ is the root-mean-square of all Z scores of the bond lengths (or angles).

Mol	Type	Chain	Res	Link	Bond lengths			Bond angles		
					Counts	RMSZ	# Z > 2	Counts	RMSZ	# Z > 2
2	NAG	A	901	1	14,14,15	0.48	0	17,19,21	0.77	0
2	NAG	A	801	1	14,14,15	0.50	0	17,19,21	1.07	2 (11%)
7	GOL	A	501	-	5,5,5	0.34	0	5,5,5	0.29	0
6	BEN	A	401	-	9,9,9	0.61	0	7,11,11	0.61	0
4	ACT	A	601	-	3,3,3	0.71	0	3,3,3	1.23	0
3	SO4	A	301	-	4,4,4	0.19	0	6,6,6	0.29	0
2	NAG	A	701	1	14,14,15	0.59	0	17,19,21	1.67	4 (23%)

In the following table, the Chirals column lists the number of chiral outliers, the number of chiral centers analysed, the number of these observed in the model and the number defined in the Chemical Component Dictionary. Similar counts are reported in the Torsion and Rings columns. '-' means no outliers of that kind were identified.

Mol	Type	Chain	Res	Link	Chirals	Torsions	Rings
2	NAG	A	901	1	1/1/5/7	4/6/23/26	0/1/1/1
2	NAG	A	801	1	-	2/6/23/26	0/1/1/1
7	GOL	A	501	-	-	2/4/4/4	-
6	BEN	A	401	-	-	4/4/4/4	0/1/1/1
2	NAG	A	701	1	1/1/5/7	4/6/23/26	0/1/1/1

There are no bond length outliers.

All (6) bond angle outliers are listed below:

Mol	Chain	Res	Type	Atoms	Z	Observed(°)	Ideal(°)
2	A	701	NAG	C3-C4-C5	3.72	116.87	110.24
2	A	801	NAG	C1-O5-C5	3.08	116.37	112.19
2	A	701	NAG	C4-C3-C2	2.94	115.33	111.02
2	A	701	NAG	C1-O5-C5	2.59	115.70	112.19
2	A	801	NAG	O5-C1-C2	-2.37	107.54	111.29
2	A	701	NAG	O5-C1-C2	-2.28	107.69	111.29

All (2) chirality outliers are listed below:

Mol	Chain	Res	Type	Atom
2	A	701	NAG	C1
2	A	901	NAG	C1

All (16) torsion outliers are listed below:

Mol	Chain	Res	Type	Atoms
2	A	701	NAG	C3-C2-N2-C7
2	A	701	NAG	C8-C7-N2-C2
2	A	701	NAG	O7-C7-N2-C2
2	A	801	NAG	C8-C7-N2-C2
2	A	801	NAG	O7-C7-N2-C2
2	A	901	NAG	C8-C7-N2-C2
2	A	901	NAG	O7-C7-N2-C2
7	A	501	GOL	O2-C2-C3-O3
2	A	901	NAG	C4-C5-C6-O6
6	A	401	BEN	N2-C-C1-C2
6	A	401	BEN	N2-C-C1-C6
2	A	901	NAG	C1-C2-N2-C7
7	A	501	GOL	C1-C2-C3-O3
2	A	701	NAG	O5-C5-C6-O6
6	A	401	BEN	N1-C-C1-C2
6	A	401	BEN	N1-C-C1-C6

There are no ring outliers.

1 monomer is involved in 1 short contact:

Mol	Chain	Res	Type	Clashes	Symm-Clashes
2	A	801	NAG	1	0

5.7 Other polymers [i](#)

There are no such residues in this entry.

5.8 Polymer linkage issues [i](#)

There are no chain breaks in this entry.

6 Fit of model and data [i](#)

6.1 Protein, DNA and RNA chains [i](#)

In the following table, the column labelled '#RSRZ > 2' contains the number (and percentage) of RSRZ outliers, followed by percent RSRZ outliers for the chain as percentile scores relative to all X-ray entries and entries of similar resolution. The OWAB column contains the minimum, median, 95th percentile and maximum values of the occupancy-weighted average B-factor per residue. The column labelled 'Q < 0.9' lists the number of (and percentage) of residues with an average occupancy less than 0.9.

Mol	Chain	Analysed	<RSRZ>	#RSRZ>2	OWAB(Å ²)	Q<0.9
1	A	231/231 (100%)	-0.01	7 (3%) 50 57	9, 14, 23, 31	15 (6%)

All (7) RSRZ outliers are listed below:

Mol	Chain	Res	Type	RSRZ
1	A	245	ASN	9.3
1	A	245(A)	THR	6.8
1	A	39	GLY	4.9
1	A	245(G)	PRO	3.0
1	A	38	ASN	2.5
1	A	243[A]	SER	2.1
1	A	218	ASN	2.0

6.2 Non-standard residues in protein, DNA, RNA chains [i](#)

There are no non-standard protein/DNA/RNA residues in this entry.

6.3 Carbohydrates [i](#)

There are no monosaccharides in this entry.

6.4 Ligands [i](#)

In the following table, the Atoms column lists the number of modelled atoms in the group and the number defined in the chemical component dictionary. The B-factors column lists the minimum, median, 95th percentile and maximum values of B factors of atoms in the group. The column labelled 'Q < 0.9' lists the number of atoms with occupancy less than 0.9.

Mol	Type	Chain	Res	Atoms	RSCC	RSR	B-factors(Å ²)	Q<0.9
2	NAG	A	901	14/15	0.36	0.65	35,39,39,40	14

Continued on next page...

Continued from previous page...

Mol	Type	Chain	Res	Atoms	RSCC	RSR	B-factors(\AA^2)	Q<0.9
2	NAG	A	801	14/15	0.44	0.42	34,37,38,38	14
2	NAG	A	701	14/15	0.50	0.42	41,45,48,48	0
7	GOL	A	501	6/6	0.79	0.22	28,32,33,33	0
4	ACT	A	601	4/4	0.90	0.15	36,37,37,37	0
6	BEN	A	401	9/9	0.91	0.11	14,16,18,19	0
3	SO4	A	301	5/5	0.98	0.12	21,22,25,25	0
5	CL	A	1001	1/1	0.99	0.04	18,18,18,18	0

6.5 Other polymers [i](#)

There are no such residues in this entry.