



Full wwPDB X-ray Structure Validation Report ⓘ

May 23, 2020 – 04:49 pm BST

PDB ID : 5AGM
Title : Structure of rat neuronal nitric oxide synthase heme domain in complex with (S)-2-Amino-5-(2-oxoacetimidamido)pentanoic acid
Authors : Li, H.; Poulos, T.L.
Deposited on : 2015-02-02
Resolution : 1.84 Å(reported)

This is a Full wwPDB X-ray Structure Validation Report for a publicly released PDB entry.

We welcome your comments at validation@mail.wwpdb.org

A user guide is available at

<https://www.wwpdb.org/validation/2017/XrayValidationReportHelp>

with specific help available everywhere you see the ⓘ symbol.

The following versions of software and data (see [references ⓘ](#)) were used in the production of this report:

MolProbity : 4.02b-467
Mogul : 1.8.5 (274361), CSD as541be (2020)
Xtriage (Phenix) : 1.13
EDS : 2.11
buster-report : 1.1.7 (2018)
Percentile statistics : 20191225.v01 (using entries in the PDB archive December 25th 2019)
Refmac : 5.8.0158
CCP4 : 7.0.044 (Gargrove)
Ideal geometry (proteins) : Engh & Huber (2001)
Ideal geometry (DNA, RNA) : Parkinson et al. (1996)
Validation Pipeline (wwPDB-VP) : 2.11

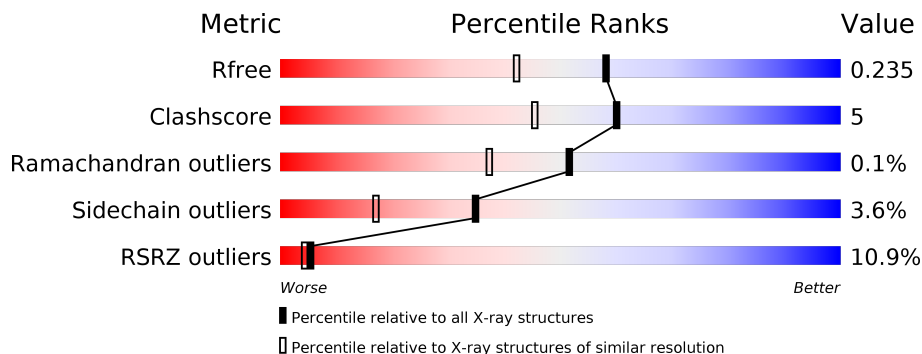
1 Overall quality at a glance

The following experimental techniques were used to determine the structure:

X-RAY DIFFRACTION

The reported resolution of this entry is 1.84 Å.

Percentile scores (ranging between 0-100) for global validation metrics of the entry are shown in the following graphic. The table shows the number of entries on which the scores are based.



Metric	Whole archive (#Entries)	Similar resolution (#Entries, resolution range(Å))
R_{free}	130704	4003 (1.86-1.82)
Clashscore	141614	4233 (1.86-1.82)
Ramachandran outliers	138981	4185 (1.86-1.82)
Sidechain outliers	138945	4186 (1.86-1.82)
RSRZ outliers	127900	3957 (1.86-1.82)

The table below summarises the geometric issues observed across the polymeric chains and their fit to the electron density. The red, orange, yellow and green segments on the lower bar indicate the fraction of residues that contain outliers for ≥ 3 , 2, 1 and 0 types of geometric quality criteria respectively. A grey segment represents the fraction of residues that are not modelled. The numeric value for each fraction is indicated below the corresponding segment, with a dot representing fractions $\leq 5\%$. The upper red bar (where present) indicates the fraction of residues that have poor fit to the electron density. The numeric value is given above the bar.

Mol	Chain	Length	Quality of chain
1	A	422	 14% 84% 11% . .
1	B	422	 7% 85% 10% . .

2 Entry composition i

There are 7 unique types of molecules in this entry. The entry contains 7154 atoms, of which 0 are hydrogens and 0 are deuteriums.

In the tables below, the ZeroOcc column contains the number of atoms modelled with zero occupancy, the AltConf column contains the number of residues with at least one atom in alternate conformation and the Trace column contains the number of residues modelled with at most 2 atoms.

- Molecule 1 is a protein called NITRIC OXIDE SYNTHASE, BRAIN.

Mol	Chain	Residues	Atoms					ZeroOcc	AltConf	Trace
			Total	C	N	O	S			
1	A	407	Total	C	N	O	S	0	2	0
			3323	2128	566	608	21			
1	B	411	Total	C	N	O	S	0	2	0
			3354	2146	574	613	21			

- Molecule 2 is PROTOPORPHYRIN IX CONTAINING FE (three-letter code: HEM) (formula: $C_{34}H_{32}FeN_4O_4$).



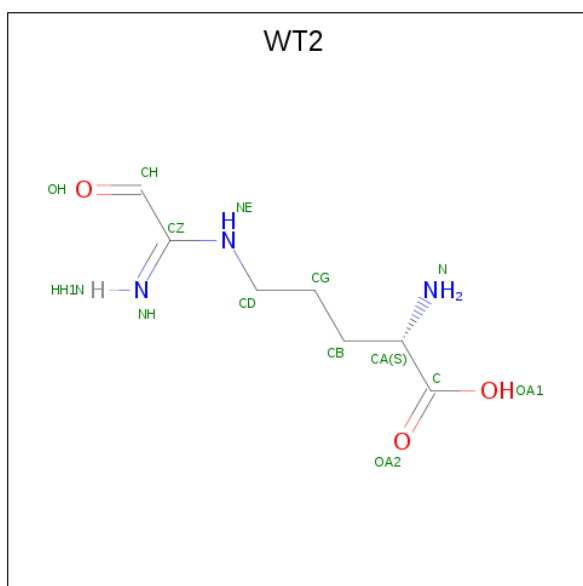
Mol	Chain	Residues	Atoms					ZeroOcc	AltConf
			Total	C	Fe	N	O		
2	A	1	Total	C	Fe	N	O	0	0
			43	34	1	4	4		
2	B	1	Total	C	Fe	N	O	0	0
			43	34	1	4	4		

- Molecule 3 is 5,6,7,8-TETRAHYDROBIOPTERIN (three-letter code: H4B) (formula: $C_9H_{15}N_5O_3$).



Mol	Chain	Residues	Atoms				ZeroOcc	AltConf
			Total	C	N	O		
3	A	1	17	9	5	3	0	0
3	B	1	17	9	5	3	0	0

- Molecule 4 is (S)-2-AMINO-5-(2-OXOACETIMIDAMIDO)PENTANOIC ACID (three-letter code: WT2) (formula: C₇H₁₃N₃O₃).



Mol	Chain	Residues	Atoms				ZeroOcc	AltConf
			Total	C	N	O		
4	A	1	13	7	3	3	0	0

Continued on next page...

Continued from previous page...

Mol	Chain	Residues	Atoms			ZeroOcc	AltConf	
4	B	1	Total	C	N	O	0	0
			13	7	3	3		

- Molecule 5 is ACETATE ION (three-letter code: ACT) (formula: C₂H₃O₂).



Mol	Chain	Residues	Atoms			ZeroOcc	AltConf
5	A	1	Total	C	O	0	0
			4	2	2		
5	B	1	Total	C	O	0	0
			4	2	2		

- Molecule 6 is ZINC ION (three-letter code: ZN) (formula: Zn).

Mol	Chain	Residues	Atoms		ZeroOcc	AltConf
6	A	1	Total	Zn	0	0
			1	1		

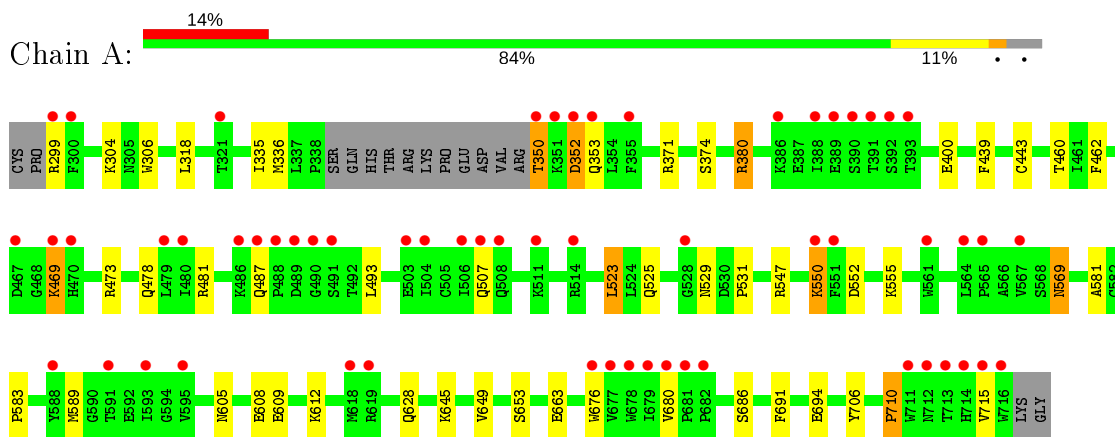
- Molecule 7 is water.

Mol	Chain	Residues	Atoms		ZeroOcc	AltConf
7	A	134	Total	O	0	0
			134	134		
7	B	188	Total	O	0	0
			188	188		

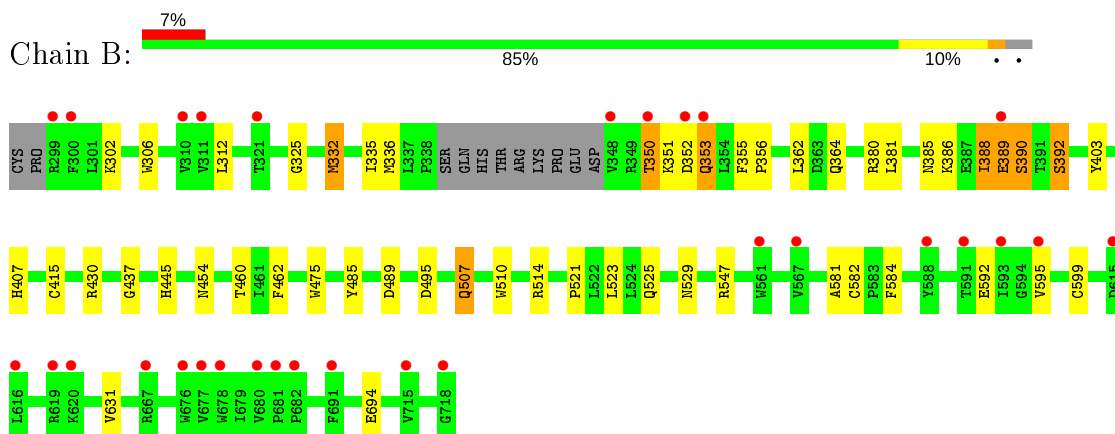
3 Residue-property plots [i](#)

These plots are drawn for all protein, RNA and DNA chains in the entry. The first graphic for a chain summarises the proportions of the various outlier classes displayed in the second graphic. The second graphic shows the sequence view annotated by issues in geometry and electron density. Residues are color-coded according to the number of geometric quality criteria for which they contain at least one outlier: green = 0, yellow = 1, orange = 2 and red = 3 or more. A red dot above a residue indicates a poor fit to the electron density ($RSRZ > 2$). Stretches of 2 or more consecutive residues without any outlier are shown as a green connector. Residues present in the sample, but not in the model, are shown in grey.

- Molecule 1: NITRIC OXIDE SYNTHASE, BRAIN



- Molecule 1: NITRIC OXIDE SYNTHASE, BRAIN



4 Data and refinement statistics

Property	Value	Source
Space group	P 21 21 21	Depositor
Cell constants a, b, c, α , β , γ	52.00Å 110.52Å 164.25Å 90.00° 90.00° 90.00°	Depositor
Resolution (Å)	38.92 – 1.84 38.89 – 1.84	Depositor EDS
% Data completeness (in resolution range)	99.3 (38.92-1.84) 99.3 (38.89-1.84)	Depositor EDS
R_{merge}	0.08	Depositor
R_{sym}	(Not available)	Depositor
$\langle I/\sigma(I) \rangle$ ¹	1.88 (at 1.84Å)	Xtrriage
Refinement program	REFMAC 5.7.0029	Depositor
R, R_{free}	0.200 , 0.235 0.199 , 0.235	Depositor DCC
R_{free} test set	4052 reflections (4.93%)	wwPDB-VP
Wilson B-factor (Å ²)	30.5	Xtrriage
Anisotropy	0.667	Xtrriage
Bulk solvent k_{sol} (e/Å ³), B_{sol} (Å ²)	0.37 , 43.8	EDS
L-test for twinning ²	$\langle L \rangle = 0.49$, $\langle L^2 \rangle = 0.32$	Xtrriage
Estimated twinning fraction	No twinning to report.	Xtrriage
F_o, F_c correlation	0.97	EDS
Total number of atoms	7154	wwPDB-VP
Average B, all atoms (Å ²)	45.0	wwPDB-VP

Xtrriage's analysis on translational NCS is as follows: *The largest off-origin peak in the Patterson function is 4.67% of the height of the origin peak. No significant pseudotranslation is detected.*

¹Intensities estimated from amplitudes.

²Theoretical values of $\langle |L| \rangle$, $\langle L^2 \rangle$ for acentric reflections are 0.5, 0.333 respectively for untwinned datasets, and 0.375, 0.2 for perfectly twinned datasets.

5 Model quality [i](#)

5.1 Standard geometry [i](#)

Bond lengths and bond angles in the following residue types are not validated in this section: HEM, ZN, WT2, H4B, ACT

The Z score for a bond length (or angle) is the number of standard deviations the observed value is removed from the expected value. A bond length (or angle) with $|Z| > 5$ is considered an outlier worth inspection. RMSZ is the root-mean-square of all Z scores of the bond lengths (or angles).

Mol	Chain	Bond lengths		Bond angles	
		RMSZ	# $ Z > 5$	RMSZ	# $ Z > 5$
1	A	0.57	0/3422	0.68	0/4644
1	B	0.68	1/3453 (0.0%)	0.81	5/4681 (0.1%)
All	All	0.62	1/6875 (0.0%)	0.75	5/9325 (0.1%)

All (1) bond length outliers are listed below:

Mol	Chain	Res	Type	Atoms	Z	Observed(Å)	Ideal(Å)
1	B	437	GLY	N-CA	5.85	1.54	1.46

All (5) bond angle outliers are listed below:

Mol	Chain	Res	Type	Atoms	Z	Observed(°)	Ideal(°)
1	B	495	ASP	CB-CG-OD1	7.10	124.69	118.30
1	B	489	ASP	CB-CG-OD1	6.10	123.79	118.30
1	B	430	ARG	NE-CZ-NH1	5.42	123.01	120.30
1	B	495	ASP	CB-CG-OD2	-5.41	113.43	118.30
1	B	380	ARG	NE-CZ-NH2	-5.28	117.66	120.30

There are no chirality outliers.

There are no planarity outliers.

5.2 Too-close contacts [i](#)

In the following table, the Non-H and H(model) columns list the number of non-hydrogen atoms and hydrogen atoms in the chain respectively. The H(added) column lists the number of hydrogen atoms added and optimized by MolProbity. The Clashes column lists the number of clashes within the asymmetric unit, whereas Symm-Clashes lists symmetry related clashes.

Mol	Chain	Non-H	H(model)	H(added)	Clashes	Symm-Clashes
1	A	3323	0	3234	32	0
1	B	3354	0	3270	33	0
2	A	43	0	30	3	0
2	B	43	0	30	4	0
3	A	17	0	15	0	0
3	B	17	0	15	0	0
4	A	13	0	12	0	0
4	B	13	0	12	1	0
5	A	4	0	3	0	0
5	B	4	0	3	0	0
6	A	1	0	0	0	0
7	A	134	0	0	3	0
7	B	188	0	0	2	0
All	All	7154	0	6624	62	0

The all-atom clashscore is defined as the number of clashes found per 1000 atoms (including hydrogen atoms). The all-atom clashscore for this structure is 5.

All (62) close contacts within the same asymmetric unit are listed below, sorted by their clash magnitude.

Atom-1	Atom-2	Interatomic distance (Å)	Clash overlap (Å)
1:A:487:GLN:HE21	1:A:493:LEU:HB2	1.50	0.74
1:A:350:THR:N	1:A:353:GLN:HE21	1.92	0.67
1:B:364:GLN:NE2	7:B:2015:HOH:O	2.23	0.67
1:A:523:LEU:HD22	1:A:531:PRO:HB2	1.76	0.66
1:A:469:LYS:HE3	1:A:469:LYS:HA	1.78	0.65
1:A:609:GLU:HG3	7:A:2108:HOH:O	1.97	0.64
1:A:336:MET:HG3	1:B:306:TRP:NE1	2.13	0.63
1:B:355:PHE:CE1	1:B:385:ASN:HB2	2.35	0.62
1:A:380:ARG:HD3	1:A:400:GLU:OE2	2.01	0.60
1:B:388:ILE:O	1:B:392:SER:N	2.30	0.57
1:A:306:TRP:CD2	1:B:336:MET:HE3	2.41	0.56
1:B:462:PHE:HB2	1:B:581:ALA:HB3	1.89	0.55
1:A:628:GLN:HG2	1:B:631:VAL:HG11	1.90	0.54
1:A:304:LYS:O	1:A:694:GLU:HG3	2.08	0.54
1:A:473:ARG:NH2	1:A:710:PRO:HD3	2.22	0.54
1:B:592:GLU:OE1	4:B:800:WT2:HB1C	2.09	0.53
1:A:478:GLN:HB2	1:A:481:ARG:HG3	1.92	0.52
1:A:605:ASN:ND2	7:A:2106:HOH:O	2.42	0.52
2:B:750:HEM:HHC	2:B:750:HEM:HBB2	1.91	0.52
1:A:462:PHE:HB2	1:A:581:ALA:HB3	1.92	0.51
1:A:306:TRP:CE2	1:B:336:MET:HE3	2.44	0.51

Continued on next page...

Continued from previous page...

Atom-1	Atom-2	Interatomic distance (Å)	Clash overlap (Å)
1:A:550:LYS:HA	1:A:550:LYS:HE3	1.92	0.51
2:A:750:HEM:CMC	2:A:750:HEM:HBC2	2.42	0.50
1:B:350:THR:HB	1:B:352:ASP:HB2	1.94	0.49
1:B:353:GLN:O	1:B:356:PRO:HG2	2.12	0.49
1:B:386:LYS:O	1:B:390:SER:HB3	2.12	0.49
1:B:510:TRP:CE2	1:B:521:PRO:HD3	2.47	0.49
1:B:325:GLY:O	1:B:332:MET:HG3	2.13	0.49
1:A:350:THR:N	1:A:353:GLN:NE2	2.59	0.48
1:B:351:LYS:HD3	1:B:389:GLU:HA	1.94	0.48
1:B:475:TRP:HB2	1:B:523:LEU:HB3	1.93	0.48
1:B:584:PHE:CD1	2:B:750:HEM:CAC	2.97	0.47
1:B:507:GLN:NE2	7:B:2112:HOH:O	2.47	0.47
1:B:525:GLN:HG3	1:B:529:ASN:O	2.14	0.47
1:A:608:GLU:O	1:A:612:LYS:HD3	2.14	0.47
1:A:299:ARG:HE	1:A:318:LEU:HD13	1.81	0.46
1:A:374:SER:HB2	7:A:2021:HOH:O	2.15	0.46
1:B:485:TYR:CE2	1:B:514:ARG:HA	2.50	0.46
1:A:487:GLN:HE21	1:A:493:LEU:CB	2.25	0.46
1:B:403:TYR:CE2	1:B:407:HIS:CE1	3.04	0.45
1:B:415:CYS:HB2	2:B:750:HEM:ND	2.31	0.45
1:A:686:SER:HA	1:A:691:PHE:CG	2.51	0.45
1:A:352:ASP:N	1:A:352:ASP:OD1	2.48	0.45
1:B:485:TYR:CZ	1:B:514:ARG:HA	2.52	0.44
1:B:350:THR:HB	1:B:352:ASP:CB	2.47	0.44
1:A:569:ASN:H	1:A:569:ASN:HD22	1.65	0.44
1:B:445:HIS:C	1:B:445:HIS:CD2	2.92	0.44
1:B:362:LEU:HD12	1:B:381:LEU:HD23	1.99	0.43
1:A:694:GLU:HB3	1:B:335:ILE:HD13	2.00	0.43
1:B:595:VAL:O	1:B:599:CYS:HB2	2.18	0.43
1:A:589:MET:HA	1:A:649:VAL:O	2.18	0.43
1:B:352:ASP:HB3	1:B:353:GLN:HE21	1.83	0.43
2:A:750:HEM:HMC1	2:A:750:HEM:HBC2	1.99	0.43
1:A:439:PHE:CZ	1:A:443:CYS:SG	3.13	0.42
1:A:460:THR:O	1:A:583:PRO:HD2	2.19	0.42
1:B:584:PHE:CD1	2:B:750:HEM:HAC	2.54	0.42
1:B:302:LYS:HA	1:B:312:LEU:O	2.20	0.42
1:A:706:TYR:OH	2:A:750:HEM:O2D	2.27	0.41
1:A:525:GLN:HG3	1:A:529:ASN:O	2.20	0.41
1:B:460:THR:O	1:B:582:CYS:HA	2.21	0.41
1:A:676:TRP:CZ2	1:A:680:VAL:HG21	2.56	0.41
1:A:335:ILE:HD13	1:B:694:GLU:HB3	2.02	0.40

There are no symmetry-related clashes.

5.3 Torsion angles [i](#)

5.3.1 Protein backbone [i](#)

In the following table, the Percentiles column shows the percent Ramachandran outliers of the chain as a percentile score with respect to all X-ray entries followed by that with respect to entries of similar resolution.

The Analysed column shows the number of residues for which the backbone conformation was analysed, and the total number of residues.

Mol	Chain	Analysed	Favoured	Allowed	Outliers	Percentiles	
1	A	405/422 (96%)	391 (96%)	14 (4%)	0	100	100
1	B	409/422 (97%)	400 (98%)	8 (2%)	1 (0%)	47	33
All	All	814/844 (96%)	791 (97%)	22 (3%)	1 (0%)	51	37

All (1) Ramachandran outliers are listed below:

Mol	Chain	Res	Type
1	B	388	ILE

5.3.2 Protein sidechains [i](#)

In the following table, the Percentiles column shows the percent sidechain outliers of the chain as a percentile score with respect to all X-ray entries followed by that with respect to entries of similar resolution.

The Analysed column shows the number of residues for which the sidechain conformation was analysed, and the total number of residues.

Mol	Chain	Analysed	Rotameric	Outliers	Percentiles	
1	A	365/377 (97%)	348 (95%)	17 (5%)	26	10
1	B	368/377 (98%)	359 (98%)	9 (2%)	49	32
All	All	733/754 (97%)	707 (96%)	26 (4%)	35	18

All (26) residues with a non-rotameric sidechain are listed below:

Mol	Chain	Res	Type
1	A	350	THR
1	A	352	ASP

Continued on next page...

Continued from previous page...

Mol	Chain	Res	Type
1	A	371	ARG
1	A	380	ARG
1	A	469	LYS
1	A	507	GLN
1	A	523	LEU
1	A	547	ARG
1	A	550	LYS
1	A	552	ASP
1	A	555	LYS
1	A	569	ASN
1	A	645	LYS
1	A	653	SER
1	A	663	GLU
1	A	710	PRO
1	A	715	VAL
1	B	332	MET
1	B	350	THR
1	B	353	GLN
1	B	389	GLU
1	B	390	SER
1	B	392	SER
1	B	454	ASN
1	B	507	GLN
1	B	547	ARG

Some sidechains can be flipped to improve hydrogen bonding and reduce clashes. All (17) such sidechains are listed below:

Mol	Chain	Res	Type
1	A	454	ASN
1	A	487	GLN
1	A	569	ASN
1	A	605	ASN
1	A	642	GLN
1	A	697	ASN
1	B	353	GLN
1	B	364	GLN
1	B	425	GLN
1	B	454	ASN
1	B	507	GLN
1	B	508	GLN
1	B	535	GLN
1	B	601	ASN

Continued on next page...

Continued from previous page...

Mol	Chain	Res	Type
1	B	605	ASN
1	B	642	GLN
1	B	697	ASN

5.3.3 RNA [i](#)

There are no RNA molecules in this entry.

5.4 Non-standard residues in protein, DNA, RNA chains [i](#)

There are no non-standard protein/DNA/RNA residues in this entry.

5.5 Carbohydrates [i](#)

There are no carbohydrates in this entry.

5.6 Ligand geometry [i](#)

Of 9 ligands modelled in this entry, 1 is monoatomic - leaving 8 for Mogul analysis.

In the following table, the Counts columns list the number of bonds (or angles) for which Mogul statistics could be retrieved, the number of bonds (or angles) that are observed in the model and the number of bonds (or angles) that are defined in the Chemical Component Dictionary. The Link column lists molecule types, if any, to which the group is linked. The Z score for a bond length (or angle) is the number of standard deviations the observed value is removed from the expected value. A bond length (or angle) with $|Z| > 2$ is considered an outlier worth inspection. RMSZ is the root-mean-square of all Z scores of the bond lengths (or angles).

Mol	Type	Chain	Res	Link	Bond lengths			Bond angles		
					Counts	RMSZ	$\# Z > 2$	Counts	RMSZ	$\# Z > 2$
4	WT2	B	800	-	7,12,12	0.87	0	5,14,14	0.68	0
2	HEM	B	750	1	27,50,50	1.05	2 (7%)	17,82,82	1.48	3 (17%)
3	H4B	A	760	-	16,18,18	1.47	2 (12%)	11,26,26	3.00	8 (72%)
4	WT2	A	800	-	7,12,12	0.98	1 (14%)	5,14,14	0.66	0
5	ACT	A	860	-	1,3,3	2.04	1 (100%)	0,3,3	0.00	-
5	ACT	B	860	-	1,3,3	1.11	0	0,3,3	0.00	-
2	HEM	A	750	1	27,50,50	1.05	3 (11%)	17,82,82	1.59	5 (29%)
3	H4B	B	760	-	16,18,18	1.20	1 (6%)	11,26,26	2.65	4 (36%)

In the following table, the Chirals column lists the number of chiral outliers, the number of chiral centers analysed, the number of these observed in the model and the number defined in the Chemical Component Dictionary. Similar counts are reported in the Torsion and Rings columns. '-' means no outliers of that kind were identified.

Mol	Type	Chain	Res	Link	Chirals	Torsions	Rings
4	WT2	B	800	-	-	1/5/13/13	-
2	HEM	B	750	1	-	0/6/54/54	-
3	H4B	A	760	-	-	0/8/17/17	0/2/2/2
4	WT2	A	800	-	-	1/5/13/13	-
2	HEM	A	750	1	-	0/6/54/54	-
3	H4B	B	760	-	-	0/8/17/17	0/2/2/2

All (10) bond length outliers are listed below:

Mol	Chain	Res	Type	Atoms	Z	Observed(Å)	Ideal(Å)
3	A	760	H4B	C2-N2	3.60	1.41	1.33
3	B	760	H4B	C7-N8	3.03	1.49	1.44
3	A	760	H4B	C7-N8	2.81	1.49	1.44
2	B	750	HEM	C1A-NA	2.71	1.41	1.36
2	A	750	HEM	C3B-C2B	-2.54	1.36	1.40
2	A	750	HEM	C1A-NA	2.50	1.41	1.36
2	A	750	HEM	C4D-C3D	2.47	1.48	1.42
2	B	750	HEM	C4D-C3D	2.13	1.47	1.42
5	A	860	ACT	CH3-C	2.04	1.51	1.48
4	A	800	WT2	CZ-NH	2.03	1.36	1.28

All (20) bond angle outliers are listed below:

Mol	Chain	Res	Type	Atoms	Z	Observed(°)	Ideal(°)
3	B	760	H4B	C4-C4A-C8A	6.49	120.34	114.57
3	A	760	H4B	C4-C4A-C8A	5.71	119.64	114.57
3	A	760	H4B	C4-C4A-N5	3.73	122.25	119.12
3	A	760	H4B	N3-C2-N1	-3.07	120.61	125.42
3	A	760	H4B	C2-N1-C8A	3.04	121.35	114.54
3	A	760	H4B	C4-N3-C2	3.02	120.72	115.93
3	B	760	H4B	N2-C2-N1	2.90	121.77	117.25
2	B	750	HEM	CMA-C3A-C4A	-2.77	124.21	128.46
3	A	760	H4B	C4A-N5-C6	-2.72	113.76	121.16
2	A	750	HEM	CBD-CAD-C3D	-2.68	107.55	112.48
3	A	760	H4B	O9-C9-C6	-2.61	102.74	108.98
3	A	760	H4B	N2-C2-N1	2.58	121.27	117.25
2	A	750	HEM	CBA-CAA-C2A	-2.52	107.85	112.49
3	B	760	H4B	C4-N3-C2	2.46	119.84	115.93

Continued on next page...

Continued from previous page...

Mol	Chain	Res	Type	Atoms	Z	Observed(°)	Ideal(°)
3	B	760	H4B	C2-N1-C8A	2.46	120.05	114.54
2	B	750	HEM	C3B-C4B-NB	-2.31	106.23	109.21
2	B	750	HEM	CBD-CAD-C3D	-2.22	108.39	112.48
2	A	750	HEM	C3B-C4B-NB	-2.21	106.35	109.21
2	A	750	HEM	CMD-C2D-C1D	-2.09	125.25	128.46
2	A	750	HEM	CMA-C3A-C4A	-2.02	125.36	128.46

There are no chirality outliers.

All (2) torsion outliers are listed below:

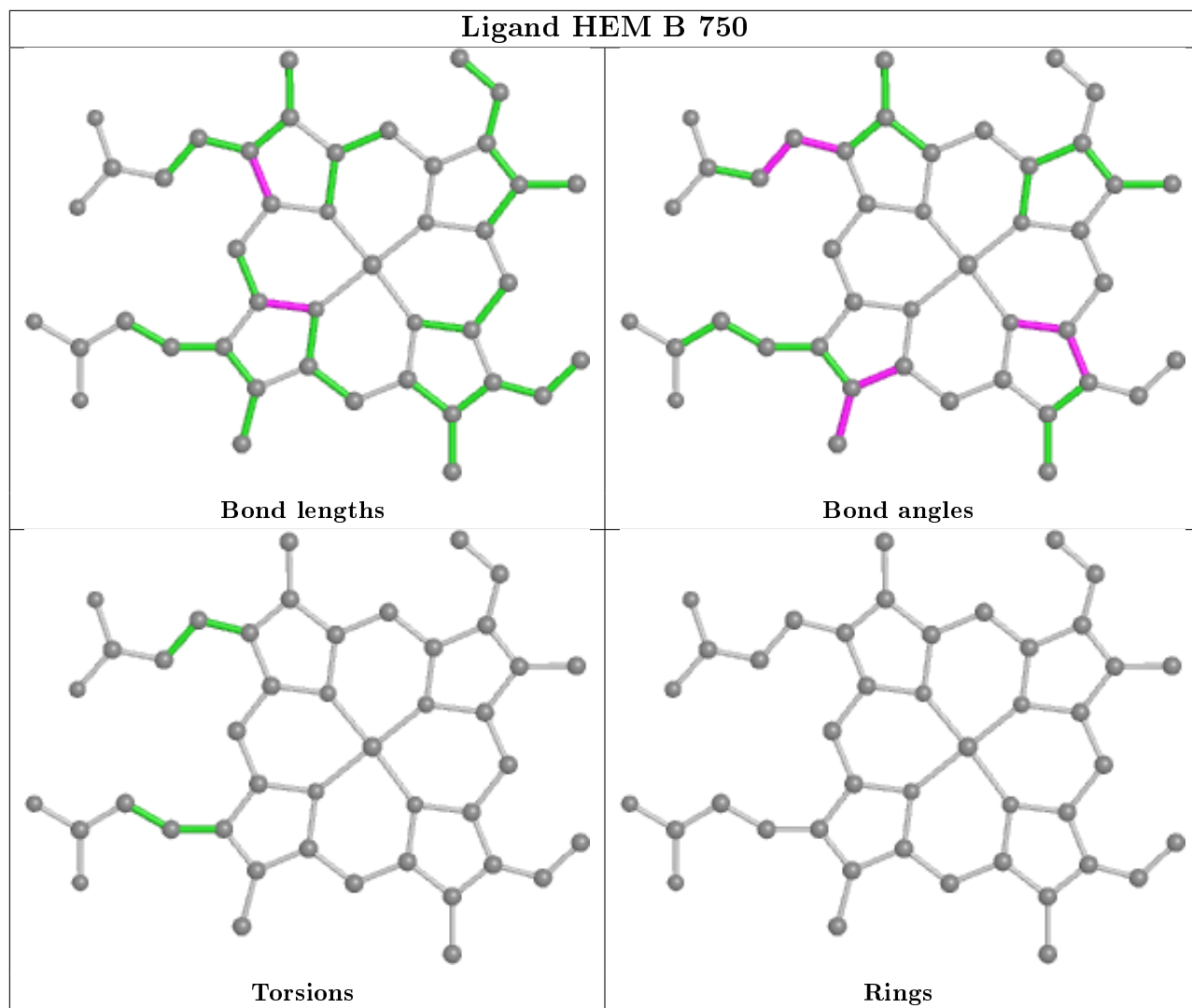
Mol	Chain	Res	Type	Atoms
4	A	800	WT2	NE-CD-CG-CB
4	B	800	WT2	NE-CD-CG-CB

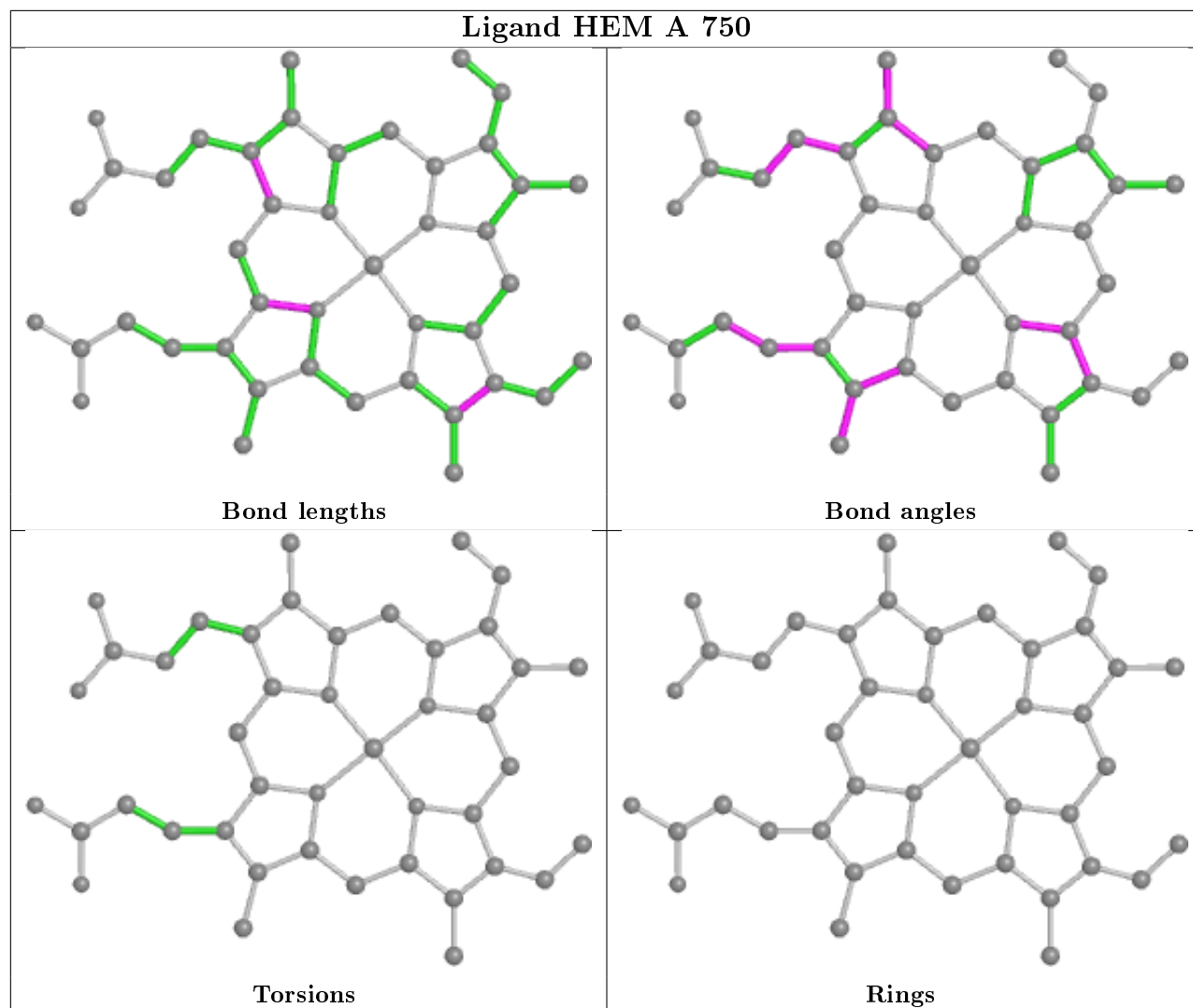
There are no ring outliers.

3 monomers are involved in 8 short contacts:

Mol	Chain	Res	Type	Clashes	Symm-Clashes
4	B	800	WT2	1	0
2	B	750	HEM	4	0
2	A	750	HEM	3	0

The following is a two-dimensional graphical depiction of Mogul quality analysis of bond lengths, bond angles, torsion angles, and ring geometry for all instances of the Ligand of Interest. In addition, ligands with molecular weight > 250 and outliers as shown on the validation Tables will also be included. For torsion angles, if less than 5% of the Mogul distribution of torsion angles is within 10 degrees of the torsion angle in question, then that torsion angle is considered an outlier. Any bond that is central to one or more torsion angles identified as an outlier by Mogul will be highlighted in the graph. For rings, the root-mean-square deviation (RMSD) between the ring in question and similar rings identified by Mogul is calculated over all ring torsion angles. If the average RMSD is greater than 60 degrees and the minimal RMSD between the ring in question and any Mogul-identified rings is also greater than 60 degrees, then that ring is considered an outlier. The outliers are highlighted in purple. The color gray indicates Mogul did not find sufficient equivalents in the CSD to analyse the geometry.





5.7 Other polymers [\(i\)](#)

There are no such residues in this entry.

5.8 Polymer linkage issues [\(i\)](#)

There are no chain breaks in this entry.

6 Fit of model and data

6.1 Protein, DNA and RNA chains

In the following table, the column labelled ‘#RSRZ> 2’ contains the number (and percentage) of RSRZ outliers, followed by percent RSRZ outliers for the chain as percentile scores relative to all X-ray entries and entries of similar resolution. The OWAB column contains the minimum, median, 95th percentile and maximum values of the occupancy-weighted average B-factor per residue. The column labelled ‘Q< 0.9’ lists the number of (and percentage) of residues with an average occupancy less than 0.9.

Mol	Chain	Analysed	<RSRZ>	#RSRZ>2	OWAB(Å ²)	Q<0.9
1	A	407/422 (96%)	0.66	59 (14%) 2 2	26, 47, 81, 103	0
1	B	411/422 (97%)	0.19	30 (7%) 15 13	23, 38, 66, 89	0
All	All	818/844 (96%)	0.42	89 (10%) 5 4	23, 42, 78, 103	0

All (89) RSRZ outliers are listed below:

Mol	Chain	Res	Type	RSRZ
1	A	488	PRO	6.8
1	B	300	PHE	6.7
1	A	715	VAL	6.0
1	A	716	TRP	5.9
1	A	355	PHE	5.4
1	A	352	ASP	5.3
1	B	348	VAL	5.1
1	B	718	GLY	4.1
1	A	491	SER	4.0
1	B	619	ARG	4.0
1	A	486	LYS	3.8
1	B	616	LEU	3.8
1	A	490	GLY	3.7
1	A	713	THR	3.6
1	B	620	LYS	3.6
1	A	489	ASP	3.6
1	A	390	SER	3.5
1	A	388	ILE	3.5
1	A	351	LYS	3.5
1	A	507	GLN	3.4
1	A	392	SER	3.3
1	A	677	VAL	3.3
1	A	503	GLU	3.3
1	A	299	ARG	3.3

Continued on next page...

Continued from previous page...

Mol	Chain	Res	Type	RSRZ
1	A	391	THR	3.2
1	A	619	ARG	3.2
1	B	615	ASP	3.1
1	B	350	THR	3.1
1	A	386	LYS	3.1
1	A	550	LYS	3.1
1	A	676	TRP	3.0
1	A	508	GLN	3.0
1	B	677	VAL	3.0
1	A	506	ILE	3.0
1	A	593	ILE	2.9
1	A	679	ILE	2.9
1	A	487	GLN	2.9
1	B	680	VAL	2.9
1	A	712	ASN	2.9
1	A	389	GLU	2.9
1	A	511	LYS	2.8
1	A	588	TYR	2.8
1	B	591	THR	2.8
1	A	300	PHE	2.8
1	B	691	PHE	2.8
1	B	389	GLU	2.8
1	B	682	PRO	2.7
1	A	467	ASP	2.7
1	B	310	VAL	2.7
1	A	561	TRP	2.6
1	B	667	ARG	2.6
1	A	682	PRO	2.6
1	A	321	THR	2.6
1	A	469	LYS	2.6
1	B	715	VAL	2.6
1	A	711	TRP	2.6
1	A	393	THR	2.6
1	B	676	TRP	2.5
1	A	678	TRP	2.5
1	A	353	GLN	2.5
1	A	591	THR	2.5
1	B	352	ASP	2.4
1	A	680	VAL	2.4
1	A	479	LEU	2.4
1	B	353	GLN	2.4
1	A	551	PHE	2.4

Continued on next page...

Continued from previous page...

Mol	Chain	Res	Type	RSRZ
1	A	480	ILE	2.4
1	A	350	THR	2.3
1	A	618	MET	2.3
1	B	588	TYR	2.3
1	A	528	GLY	2.3
1	B	299	ARG	2.3
1	B	681	PRO	2.2
1	B	321	THR	2.2
1	B	593	ILE	2.2
1	A	565	PRO	2.2
1	B	561	TRP	2.2
1	B	678	TRP	2.2
1	B	567	VAL	2.2
1	A	504	ILE	2.1
1	A	564	LEU	2.1
1	A	567	VAL	2.1
1	A	595	VAL	2.1
1	A	681	PRO	2.1
1	A	470	HIS	2.1
1	A	514	ARG	2.1
1	A	714	HIS	2.1
1	B	311	VAL	2.1
1	B	595	VAL	2.1

6.2 Non-standard residues in protein, DNA, RNA chains [i](#)

There are no non-standard protein/DNA/RNA residues in this entry.

6.3 Carbohydrates [i](#)

There are no carbohydrates in this entry.

6.4 Ligands [i](#)

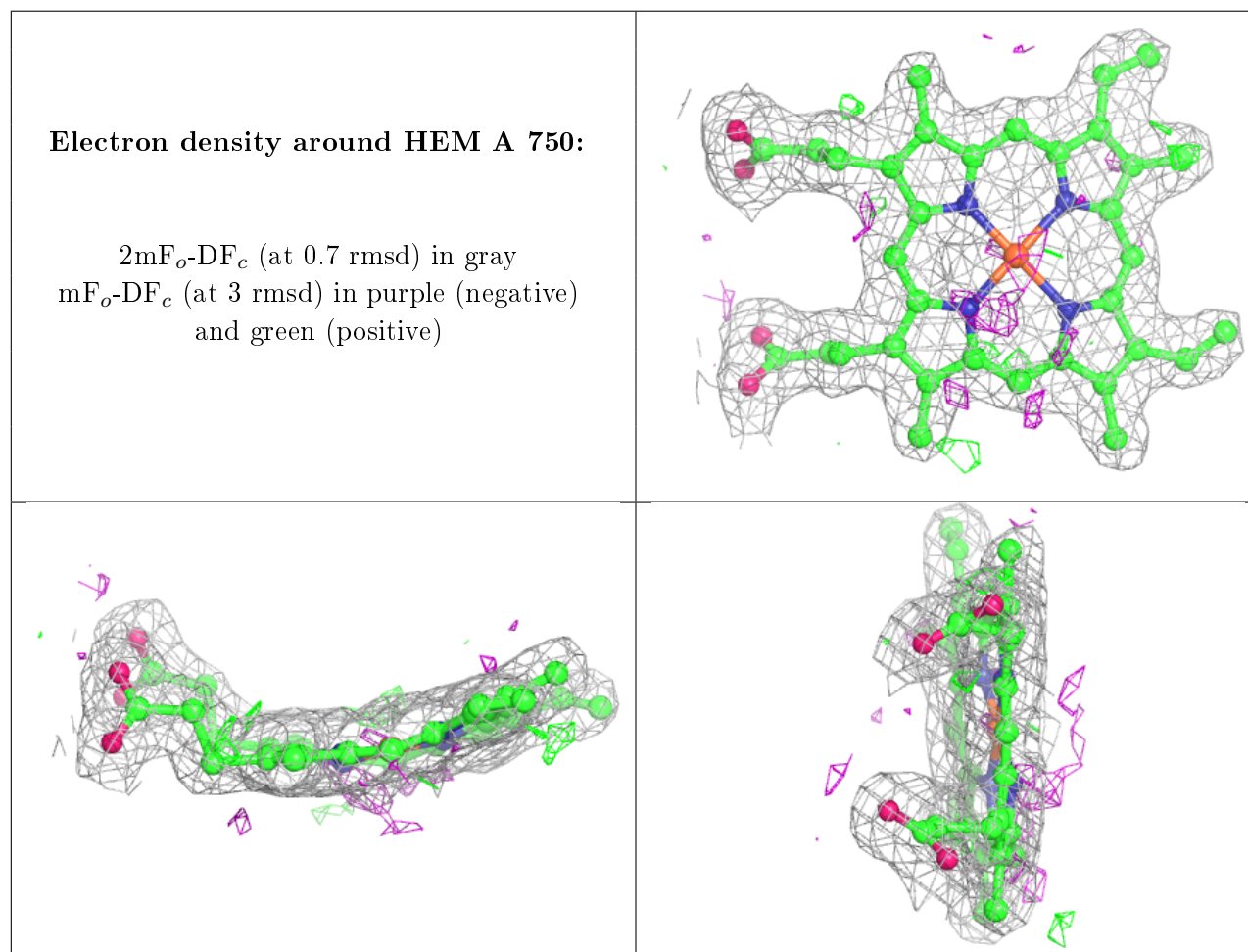
In the following table, the Atoms column lists the number of modelled atoms in the group and the number defined in the chemical component dictionary. The B-factors column lists the minimum, median, 95th percentile and maximum values of B factors of atoms in the group. The column labelled 'Q< 0.9' lists the number of atoms with occupancy less than 0.9.

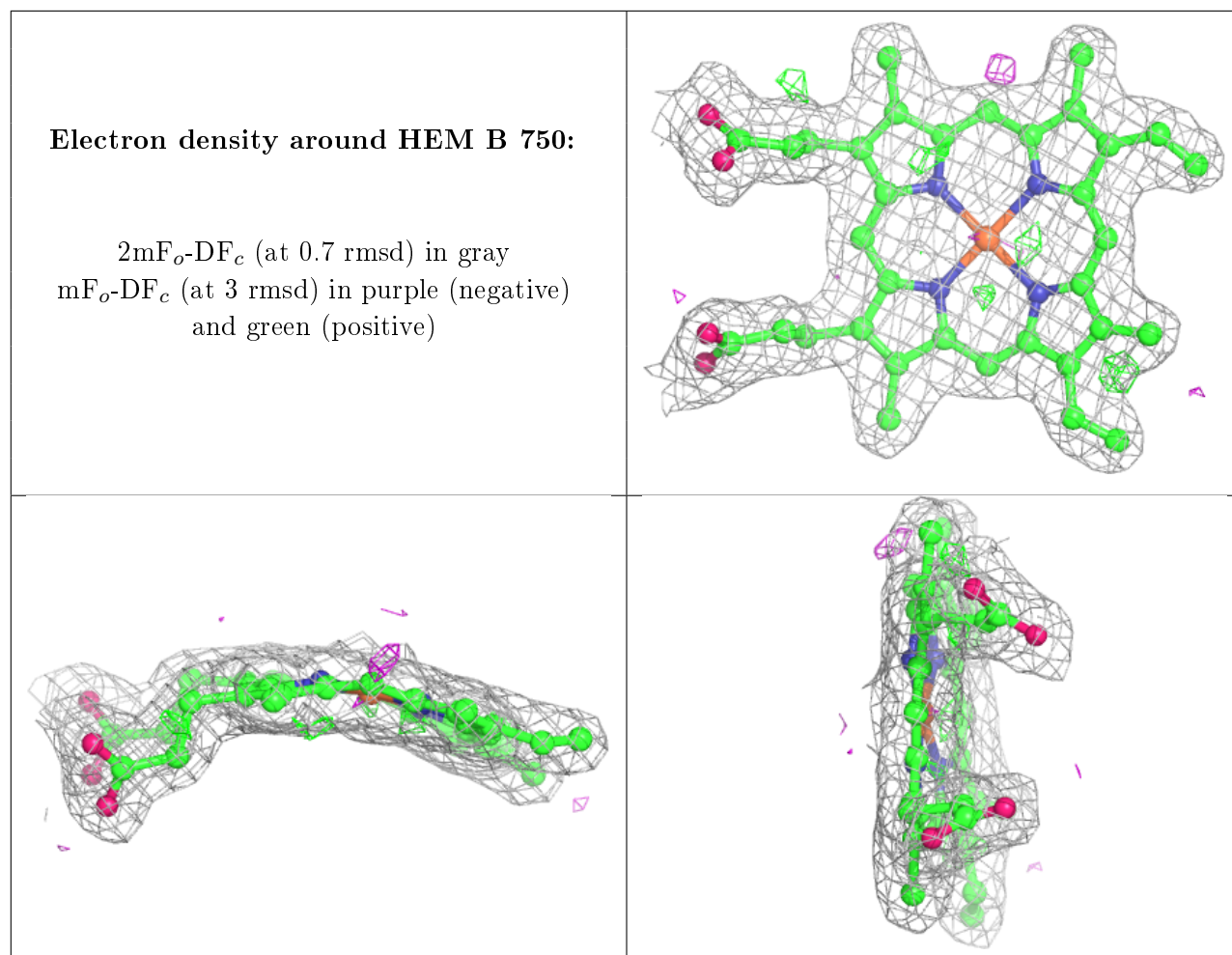
Continued on next page...

Continued from previous page...

Mol	Type	Chain	Res	Atoms	RSCC	RSR	B-factors(\AA^2)	Q<0.9
4	WT2	B	800	13/13	0.89	0.20	33,40,45,46	0
4	WT2	A	800	13/13	0.89	0.17	24,29,35,36	0
5	ACT	A	860	4/4	0.92	0.23	62,67,68,68	0
5	ACT	B	860	4/4	0.94	0.16	61,61,65,68	0
3	H4B	B	760	17/17	0.96	0.18	27,30,32,32	0
2	HEM	A	750	43/43	0.97	0.15	27,30,33,36	0
3	H4B	A	760	17/17	0.97	0.16	23,26,27,28	0
2	HEM	B	750	43/43	0.98	0.15	23,27,34,38	0
6	ZN	A	1717	1/1	1.00	0.11	41,41,41,41	0

The following is a graphical depiction of the model fit to experimental electron density of all instances of the Ligand of Interest. In addition, ligands with molecular weight > 250 and outliers as shown on the geometry validation Tables will also be included. Each fit is shown from different orientation to approximate a three-dimensional view.





6.5 Other polymers [i](#)

There are no such residues in this entry.