



# Full wwPDB X-ray Structure Validation Report ⓘ

Jul 26, 2023 – 02:50 AM EDT

PDB ID : 1AF2  
Title : CRYSTAL STRUCTURE OF CYTIDINE DEAMINASE COMPLEXED WITH URIDINE  
Authors : Xiang, S.; Carter, C.W.  
Deposited on : 1997-03-20  
Resolution : 2.30 Å(reported)

This is a Full wwPDB X-ray Structure Validation Report for a publicly released PDB entry.

We welcome your comments at [validation@mail.wwpdb.org](mailto:validation@mail.wwpdb.org)

A user guide is available at

<https://www.wwpdb.org/validation/2017/XrayValidationReportHelp>

with specific help available everywhere you see the ⓘ symbol.

The types of validation reports are described at

<http://www.wwpdb.org/validation/2017/FAQs#types>.

---

The following versions of software and data (see [references ⓘ](#)) were used in the production of this report:

MolProbity : 4.02b-467  
Mogul : 1.8.5 (274361), CSD as541be (2020)  
Xtriage (Phenix) : 1.13  
EDS : 2.34  
buster-report : 1.1.7 (2018)  
Percentile statistics : 20191225.v01 (using entries in the PDB archive December 25th 2019)  
Refmac : 5.8.0158  
CCP4 : 7.0.044 (Gargrove)  
Ideal geometry (proteins) : Engh & Huber (2001)  
Ideal geometry (DNA, RNA) : Parkinson et al. (1996)  
Validation Pipeline (wwPDB-VP) : 2.34

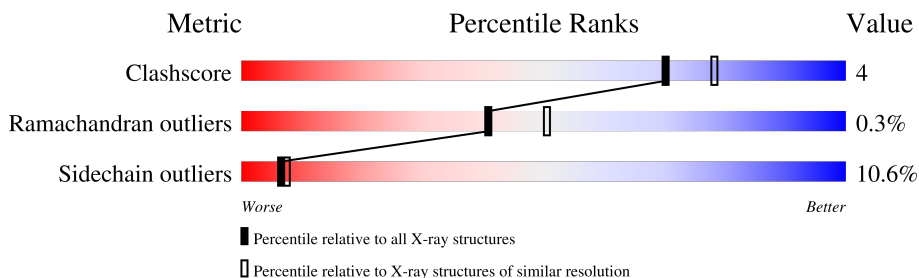
# 1 Overall quality at a glance

The following experimental techniques were used to determine the structure:

*X-RAY DIFFRACTION*

The reported resolution of this entry is 2.30 Å.

Percentile scores (ranging between 0-100) for global validation metrics of the entry are shown in the following graphic. The table shows the number of entries on which the scores are based.



Metric	Whole archive (#Entries)	Similar resolution (#Entries, resolution range(Å))
Clashscore	141614	5643 (2.30-2.30)
Ramachandran outliers	138981	5575 (2.30-2.30)
Sidechain outliers	138945	5575 (2.30-2.30)

The table below summarises the geometric issues observed across the polymeric chains and their fit to the electron density. The red, orange, yellow and green segments of the lower bar indicate the fraction of residues that contain outliers for  $\geq 3$ , 2, 1 and 0 types of geometric quality criteria respectively. A grey segment represents the fraction of residues that are not modelled. The numeric value for each fraction is indicated below the corresponding segment, with a dot representing fractions  $\leq 5\%$ .

Mol	Chain	Length	Quality of chain
1	A	294	82% 15% .

## 2 Entry composition [i](#)

There are 4 unique types of molecules in this entry. The entry contains 2287 atoms, of which 0 are hydrogens and 0 are deuteriums.

In the tables below, the ZeroOcc column contains the number of atoms modelled with zero occupancy, the AltConf column contains the number of residues with at least one atom in alternate conformation and the Trace column contains the number of residues modelled with at most 2 atoms.

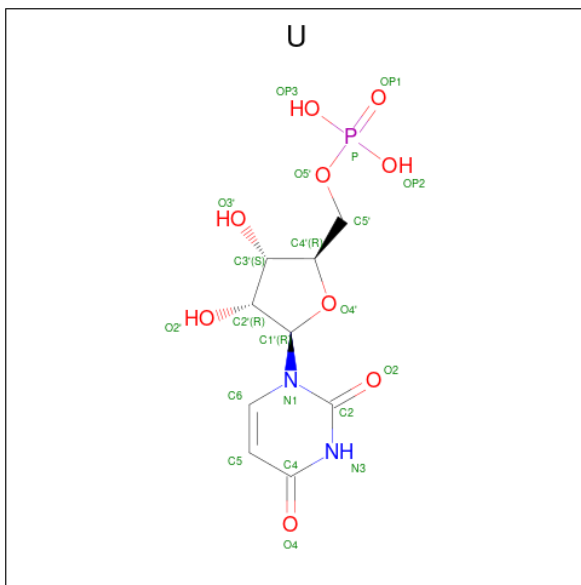
- Molecule 1 is a protein called CYTIDINE DEAMINASE.

Mol	Chain	Residues	Atoms					ZeroOcc	AltConf	Trace
			Total	C	N	O	S			
1	A	294	2220	1406	382	421	11	0	0	0

- Molecule 2 is ZINC ION (three-letter code: ZN) (formula: Zn).

Mol	Chain	Residues	Atoms		ZeroOcc	AltConf
2	A	1	Total	Zn	0	0
			1	1		

- Molecule 3 is URIDINE-5'-MONOPHOSPHATE (three-letter code: U) (formula: C<sub>9</sub>H<sub>13</sub>N<sub>2</sub>O<sub>9</sub>P).



Mol	Chain	Residues	Atoms				ZeroOcc	AltConf
			Total	C	N	O		
3	A	1	17	9	2	6	0	0

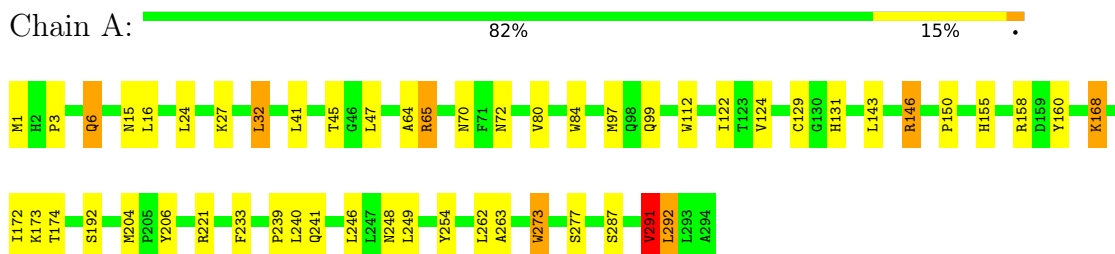
- Molecule 4 is water.

<b>Mol</b>	<b>Chain</b>	<b>Residues</b>	<b>Atoms</b>	<b>ZeroOcc</b>	<b>AltConf</b>
4	A	49	Total O 49 49	1	0

### 3 Residue-property plots [i](#)

These plots are drawn for all protein, RNA, DNA and oligosaccharide chains in the entry. The first graphic for a chain summarises the proportions of the various outlier classes displayed in the second graphic. The second graphic shows the sequence view annotated by issues in geometry. Residues are color-coded according to the number of geometric quality criteria for which they contain at least one outlier: green = 0, yellow = 1, orange = 2 and red = 3 or more. Stretches of 2 or more consecutive residues without any outlier are shown as a green connector. Residues present in the sample, but not in the model, are shown in grey.

- Molecule 1: CYTIDINE DEAMINASE



## 4 Data and refinement statistics i

Property	Value	Source
Space group	P 31 2 1	Depositor
Cell constants a, b, c, $\alpha$ , $\beta$ , $\gamma$	120.30Å 120.30Å 78.40Å 90.00° 90.00° 120.00°	Depositor
Resolution (Å)	7.00 – 2.30 104.18 – 2.28	Depositor EDS
% Data completeness (in resolution range)	80.0 (7.00-2.30) 80.2 (104.18-2.28)	Depositor EDS
$R_{merge}$	0.07	Depositor
$R_{sym}$	0.08	Depositor
$\langle I/\sigma(I) \rangle$ <sup>1</sup>	2.16 (at 2.29Å)	Xtrriage
Refinement program	X-PLOR 3.0	Depositor
R, $R_{free}$	(Not available) , (Not available) 0.194 , (Not available)	Depositor DCC
$R_{free}$ test set	No test flags present.	wwPDB-VP
Wilson B-factor (Å <sup>2</sup> )	25.8	Xtrriage
Anisotropy	0.351	Xtrriage
Bulk solvent $k_{sol}$ (e/Å <sup>3</sup> ), $B_{sol}$ (Å <sup>2</sup> )	0.35 , 66.3	EDS
L-test for twinning <sup>2</sup>	$\langle  L  \rangle = 0.47$ , $\langle L^2 \rangle = 0.30$	Xtrriage
Estimated twinning fraction	0.050 for -h,-k,l	Xtrriage
$F_o, F_c$ correlation	0.94	EDS
Total number of atoms	2287	wwPDB-VP
Average B, all atoms (Å <sup>2</sup> )	32.0	wwPDB-VP

Xtrriage's analysis on translational NCS is as follows: *The largest off-origin peak in the Patterson function is 4.14% of the height of the origin peak. No significant pseudotranslation is detected.*

<sup>1</sup>Intensities estimated from amplitudes.

<sup>2</sup>Theoretical values of  $\langle |L| \rangle$ ,  $\langle L^2 \rangle$  for acentric reflections are 0.5, 0.333 respectively for untwinned datasets, and 0.375, 0.2 for perfectly twinned datasets.

## 5 Model quality [i](#)

### 5.1 Standard geometry [i](#)

Bond lengths and bond angles in the following residue types are not validated in this section:  
ZN

The Z score for a bond length (or angle) is the number of standard deviations the observed value is removed from the expected value. A bond length (or angle) with  $|Z| > 5$  is considered an outlier worth inspection. RMSZ is the root-mean-square of all Z scores of the bond lengths (or angles).

Mol	Chain	Bond lengths		Bond angles	
		RMSZ	# Z  >5	RMSZ	# Z  >5
1	A	0.69	0/2270	1.28	18/3088 (0.6%)

There are no bond length outliers.

All (18) bond angle outliers are listed below:

Mol	Chain	Res	Type	Atoms	Z	Observed(°)	Ideal(°)
1	A	65	ARG	NE-CZ-NH2	-10.21	115.20	120.30
1	A	273	TRP	CD1-CG-CD2	9.00	113.50	106.30
1	A	273	TRP	CE2-CD2-CG	-8.21	100.73	107.30
1	A	84	TRP	CD1-CG-CD2	7.98	112.69	106.30
1	A	112	TRP	CD1-CG-CD2	7.66	112.43	106.30
1	A	112	TRP	CE2-CD2-CG	-6.73	101.92	107.30
1	A	292	LEU	CA-CB-CG	6.72	130.75	115.30
1	A	84	TRP	CE2-CD2-CG	-6.49	102.11	107.30
1	A	273	TRP	CG-CD2-CE3	6.18	139.46	133.90
1	A	273	TRP	CB-CG-CD1	-6.13	119.03	127.00
1	A	32	LEU	CA-CB-CG	5.90	128.87	115.30
1	A	273	TRP	CG-CD1-NE1	-5.67	104.43	110.10
1	A	65	ARG	NE-CZ-NH1	5.66	123.13	120.30
1	A	254	TYR	CB-CG-CD2	-5.62	117.63	121.00
1	A	291	VAL	CG1-CB-CG2	-5.49	102.11	110.90
1	A	146	ARG	NE-CZ-NH2	-5.41	117.59	120.30
1	A	84	TRP	CG-CD1-NE1	-5.36	104.74	110.10
1	A	112	TRP	CG-CD1-NE1	-5.09	105.01	110.10

There are no chirality outliers.

There are no planarity outliers.

## 5.2 Too-close contacts

In the following table, the Non-H and H(model) columns list the number of non-hydrogen atoms and hydrogen atoms in the chain respectively. The H(added) column lists the number of hydrogen atoms added and optimized by MolProbity. The Clashes column lists the number of clashes within the asymmetric unit, whereas Symm-Clashes lists symmetry-related clashes.

Mol	Chain	Non-H	H(model)	H(added)	Clashes	Symm-Clashes
1	A	2220	0	2185	16	0
2	A	1	0	0	0	0
3	A	17	0	12	0	0
4	A	49	0	0	1	0
All	All	2287	0	2197	16	0

The all-atom clashscore is defined as the number of clashes found per 1000 atoms (including hydrogen atoms). The all-atom clashscore for this structure is 4.

All (16) close contacts within the same asymmetric unit are listed below, sorted by their clash magnitude.

Atom-1	Atom-2	Interatomic distance (Å)	Clash overlap (Å)
1:A:129:CYS:SG	1:A:131:HIS:HB3	2.34	0.67
1:A:143:LEU:HB3	1:A:158:ARG:HB3	1.81	0.63
1:A:172:ILE:HG13	1:A:206:TYR:CE1	2.38	0.58
1:A:99:GLN:HE21	1:A:241:GLN:HE22	1.53	0.55
1:A:65:ARG:HE	1:A:248:ASN:ND2	2.15	0.45
1:A:263:ALA:HA	1:A:291:VAL:O	2.16	0.45
1:A:155:HIS:HB2	1:A:160:TYR:CE2	2.51	0.45
1:A:124:VAL:O	1:A:150:PRO:HD3	2.18	0.44
1:A:239:PRO:HD2	4:A:613:HOH:O	2.18	0.43
1:A:15:ASN:ND2	1:A:45:THR:HA	2.34	0.42
1:A:155:HIS:HB2	1:A:160:TYR:HE2	1.84	0.42
1:A:3:PRO:O	1:A:6:GLN:HB3	2.19	0.42
1:A:1:MET:HA	1:A:24:LEU:O	2.20	0.41
1:A:168:LYS:H	1:A:168:LYS:HD3	1.85	0.41
1:A:64:ALA:HB3	1:A:72:ASN:ND2	2.36	0.41
1:A:262:LEU:HD23	1:A:273:TRP:HE3	1.86	0.41

There are no symmetry-related clashes.



## 5.3 Torsion angles [i](#)

### 5.3.1 Protein backbone [i](#)

In the following table, the Percentiles column shows the percent Ramachandran outliers of the chain as a percentile score with respect to all X-ray entries followed by that with respect to entries of similar resolution.

The Analysed column shows the number of residues for which the backbone conformation was analysed, and the total number of residues.

Mol	Chain	Analysed	Favoured	Allowed	Outliers	Percentiles
1	A	292/294 (99%)	286 (98%)	5 (2%)	1 (0%)	41 50

All (1) Ramachandran outliers are listed below:

Mol	Chain	Res	Type
1	A	233	PHE

### 5.3.2 Protein sidechains [i](#)

In the following table, the Percentiles column shows the percent sidechain outliers of the chain as a percentile score with respect to all X-ray entries followed by that with respect to entries of similar resolution.

The Analysed column shows the number of residues for which the sidechain conformation was analysed, and the total number of residues.

Mol	Chain	Analysed	Rotameric	Outliers	Percentiles
1	A	227/227 (100%)	203 (89%)	24 (11%)	6 7

All (24) residues with a non-rotameric sidechain are listed below:

Mol	Chain	Res	Type
1	A	6	GLN
1	A	16	LEU
1	A	27	LYS
1	A	32	LEU
1	A	41	LEU
1	A	47	LEU
1	A	70	ASN
1	A	80	VAL
1	A	97	MET
1	A	122	ILE

*Continued on next page...*

*Continued from previous page...*

Mol	Chain	Res	Type
1	A	146	ARG
1	A	168	LYS
1	A	173	LYS
1	A	174	THR
1	A	192	SER
1	A	204	MET
1	A	221	ARG
1	A	240	LEU
1	A	246	LEU
1	A	249	LEU
1	A	277	SER
1	A	287	SER
1	A	291	VAL
1	A	292	LEU

Sometimes sidechains can be flipped to improve hydrogen bonding and reduce clashes. All (5) such sidechains are listed below:

Mol	Chain	Res	Type
1	A	99	GLN
1	A	131	HIS
1	A	137	ASN
1	A	155	HIS
1	A	248	ASN

### 5.3.3 RNA [i](#)

There are no RNA molecules in this entry.

### 5.4 Non-standard residues in protein, DNA, RNA chains [i](#)

There are no non-standard protein/DNA/RNA residues in this entry.

### 5.5 Carbohydrates [i](#)

There are no monosaccharides in this entry.

### 5.6 Ligand geometry [i](#)

Of 2 ligands modelled in this entry, 1 is monoatomic - leaving 1 for Mogul analysis.

In the following table, the Counts columns list the number of bonds (or angles) for which Mogul statistics could be retrieved, the number of bonds (or angles) that are observed in the model and the number of bonds (or angles) that are defined in the Chemical Component Dictionary. The Link column lists molecule types, if any, to which the group is linked. The Z score for a bond length (or angle) is the number of standard deviations the observed value is removed from the expected value. A bond length (or angle) with  $|Z| > 2$  is considered an outlier worth inspection. RMSZ is the root-mean-square of all Z scores of the bond lengths (or angles).

Mol	Type	Chain	Res	Link	Bond lengths			Bond angles		
					Counts	RMSZ	# Z  > 2	Counts	RMSZ	# Z  > 2
3	U	A	295	2	18,18,22	1.72	4 (22%)	26,26,33	2.44	7 (26%)

In the following table, the Chirals column lists the number of chiral outliers, the number of chiral centers analysed, the number of these observed in the model and the number defined in the Chemical Component Dictionary. Similar counts are reported in the Torsion and Rings columns. '-' means no outliers of that kind were identified.

Mol	Type	Chain	Res	Link	Chirals	Torsions	Rings
3	U	A	295	2	-	1/6/22/26	0/2/2/2

All (4) bond length outliers are listed below:

Mol	Chain	Res	Type	Atoms	Z	Observed(Å)	Ideal(Å)
3	A	295	U	C1'-N1	5.14	1.62	1.47
3	A	295	U	C6-N1	2.61	1.44	1.38
3	A	295	U	C2'-C3'	-2.51	1.46	1.53
3	A	295	U	O4-C4	-2.20	1.20	1.24

All (7) bond angle outliers are listed below:

Mol	Chain	Res	Type	Atoms	Z	Observed(°)	Ideal(°)
3	A	295	U	C2'-C1'-N1	8.39	136.99	113.22
3	A	295	U	O4'-C1'-C2'	4.54	116.53	106.64
3	A	295	U	O4'-C1'-N1	-4.15	98.89	108.36
3	A	295	U	C4'-O4'-C1'	-3.92	100.83	109.47
3	A	295	U	C1'-N1-C6	-2.37	115.68	120.84
3	A	295	U	O4'-C4'-C5'	2.30	114.19	109.21
3	A	295	U	O4'-C4'-C3'	2.05	109.17	105.11

There are no chirality outliers.

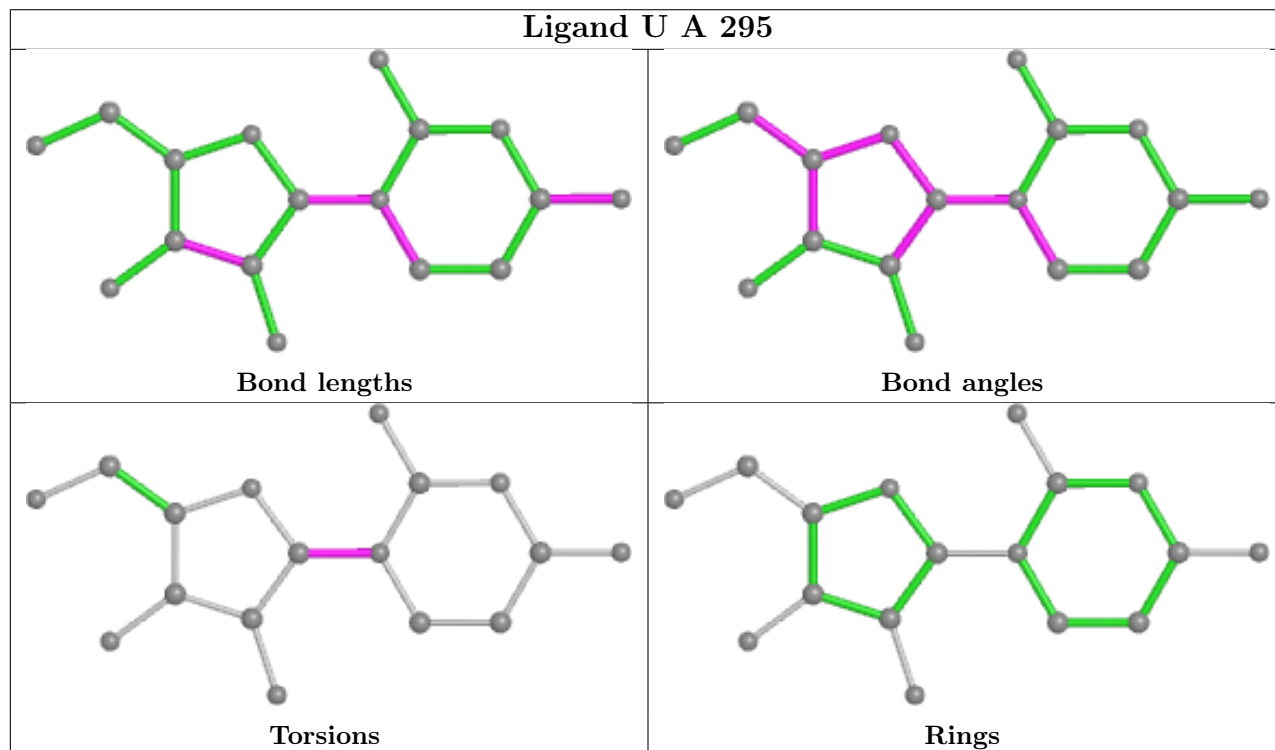
All (1) torsion outliers are listed below:

Mol	Chain	Res	Type	Atoms
3	A	295	U	O4'-C1'-N1-C6

There are no ring outliers.

No monomer is involved in short contacts.

The following is a two-dimensional graphical depiction of Mogul quality analysis of bond lengths, bond angles, torsion angles, and ring geometry for all instances of the Ligand of Interest. In addition, ligands with molecular weight > 250 and outliers as shown on the validation Tables will also be included. For torsion angles, if less than 5% of the Mogul distribution of torsion angles is within 10 degrees of the torsion angle in question, then that torsion angle is considered an outlier. Any bond that is central to one or more torsion angles identified as an outlier by Mogul will be highlighted in the graph. For rings, the root-mean-square deviation (RMSD) between the ring in question and similar rings identified by Mogul is calculated over all ring torsion angles. If the average RMSD is greater than 60 degrees and the minimal RMSD between the ring in question and any Mogul-identified rings is also greater than 60 degrees, then that ring is considered an outlier. The outliers are highlighted in purple. The color gray indicates Mogul did not find sufficient equivalents in the CSD to analyse the geometry.



## 5.7 Other polymers [i](#)

There are no such residues in this entry.

## 5.8 Polymer linkage issues

There are no chain breaks in this entry.

## 6 Fit of model and data

### 6.1 Protein, DNA and RNA chains

Unable to reproduce the depositors R factor - this section is therefore empty.

### 6.2 Non-standard residues in protein, DNA, RNA chains

Unable to reproduce the depositors R factor - this section is therefore empty.

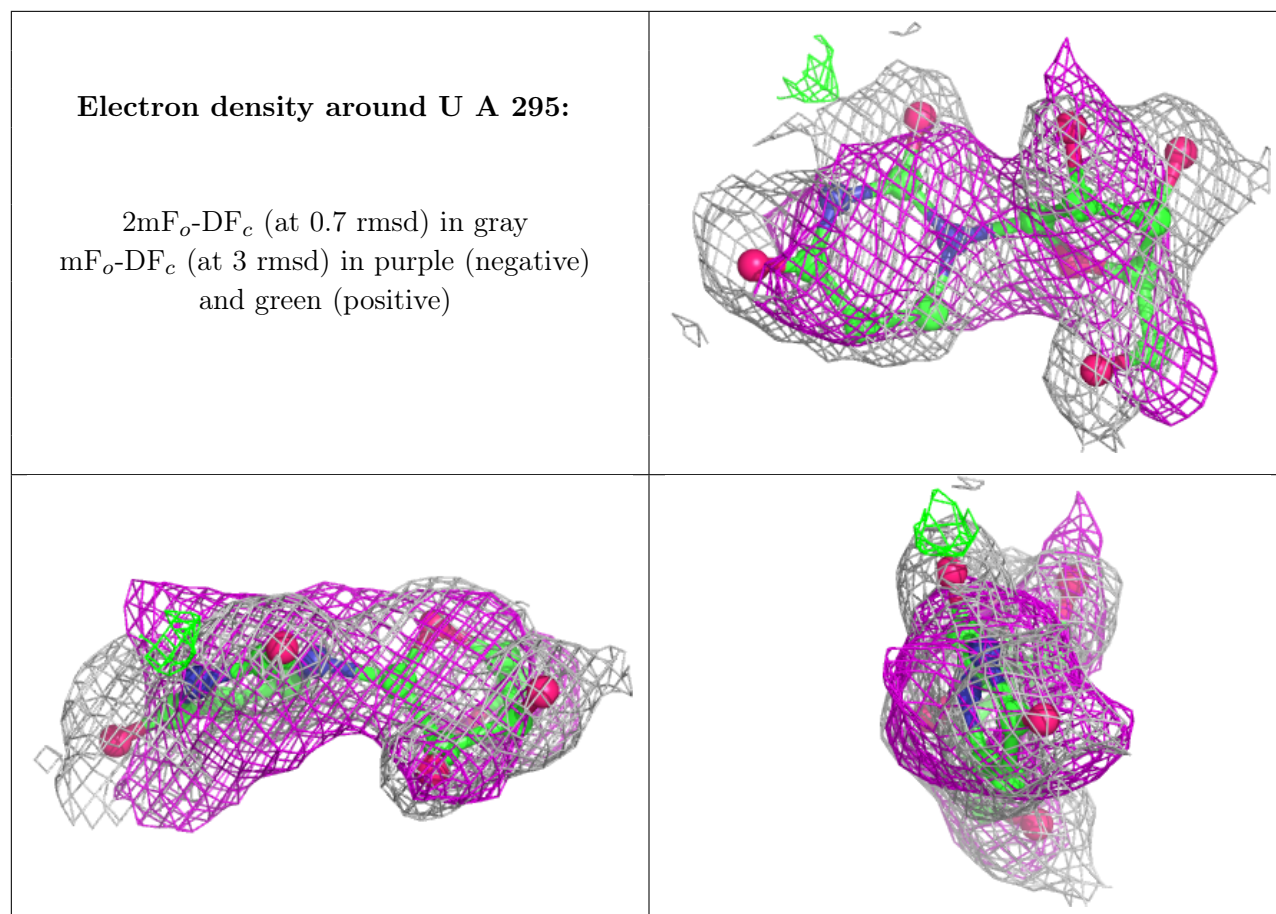
### 6.3 Carbohydrates

Unable to reproduce the depositors R factor - this section is therefore empty.

### 6.4 Ligands

Unable to reproduce the depositors R factor - this section is therefore empty.

The following is a graphical depiction of the model fit to experimental electron density of all instances of the Ligand of Interest. In addition, ligands with molecular weight > 250 and outliers as shown on the geometry validation Tables will also be included. Each fit is shown from different orientation to approximate a three-dimensional view.



## 6.5 Other polymers [i](#)

Unable to reproduce the depositor's R factor - this section is therefore empty.