



Full wwPDB X-ray Structure Validation Report ⓘ

Dec 12, 2023 – 05:17 pm GMT

PDB ID : 4AEC
Title : Crystal Structure of the Arabidopsis thaliana O-Acetyl-Serine-(Thiol)- Lyase C
Authors : Feldman-Salit, A.; Wirtz, M.; Lenherr, E.D.; Throm, C.; Hothorn, M.; Schefzek, K.; Hell, R.; Wade, R.C.
Deposited on : 2012-01-09
Resolution : 2.40 Å(reported)

This is a Full wwPDB X-ray Structure Validation Report for a publicly released PDB entry.

We welcome your comments at validation@mail.wwpdb.org

A user guide is available at

<https://www.wwpdb.org/validation/2017/XrayValidationReportHelp>

with specific help available everywhere you see the ⓘ symbol.

The types of validation reports are described at

<http://www.wwpdb.org/validation/2017/FAQs#types>.

The following versions of software and data (see [references ⓘ](#)) were used in the production of this report:

MolProbity : 4.02b-467
Mogul : 1.8.4, CSD as541be (2020)
Xtriage (Phenix) : 1.13
EDS : 2.36
Percentile statistics : 20191225.v01 (using entries in the PDB archive December 25th 2019)
Refmac : 5.8.0158
CCP4 : 7.0.044 (Gargrove)
Ideal geometry (proteins) : Engh & Huber (2001)
Ideal geometry (DNA, RNA) : Parkinson et al. (1996)
Validation Pipeline (wwPDB-VP) : 2.36

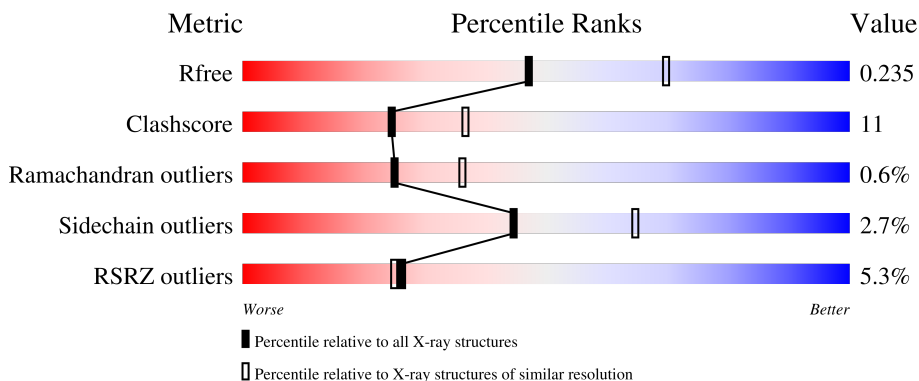
1 Overall quality at a glance

The following experimental techniques were used to determine the structure:

X-RAY DIFFRACTION

The reported resolution of this entry is 2.40 Å.

Percentile scores (ranging between 0-100) for global validation metrics of the entry are shown in the following graphic. The table shows the number of entries on which the scores are based.



Metric	Whole archive (#Entries)	Similar resolution (#Entries, resolution range(Å))
R_{free}	130704	3907 (2.40-2.40)
Clashscore	141614	4398 (2.40-2.40)
Ramachandran outliers	138981	4318 (2.40-2.40)
Sidechain outliers	138945	4319 (2.40-2.40)
RSRZ outliers	127900	3811 (2.40-2.40)

The table below summarises the geometric issues observed across the polymeric chains and their fit to the electron density. The red, orange, yellow and green segments of the lower bar indicate the fraction of residues that contain outliers for ≥ 3 , 2, 1 and 0 types of geometric quality criteria respectively. A grey segment represents the fraction of residues that are not modelled. The numeric value for each fraction is indicated below the corresponding segment, with a dot representing fractions $\leq 5\%$. The upper red bar (where present) indicates the fraction of residues that have poor fit to the electron density. The numeric value is given above the bar.

Mol	Chain	Length	Quality of chain
1	A	430	
1	B	430	

The following table lists non-polymeric compounds, carbohydrate monomers and non-standard residues in protein, DNA, RNA chains that are outliers for geometric or electron-density-fit criteria:

Mol	Type	Chain	Res	Chirality	Geometry	Clashes	Electron density
3	ACT	B	1430	-	-	X	-
4	GOL	B	1429	-	-	X	-

2 Entry composition [i](#)

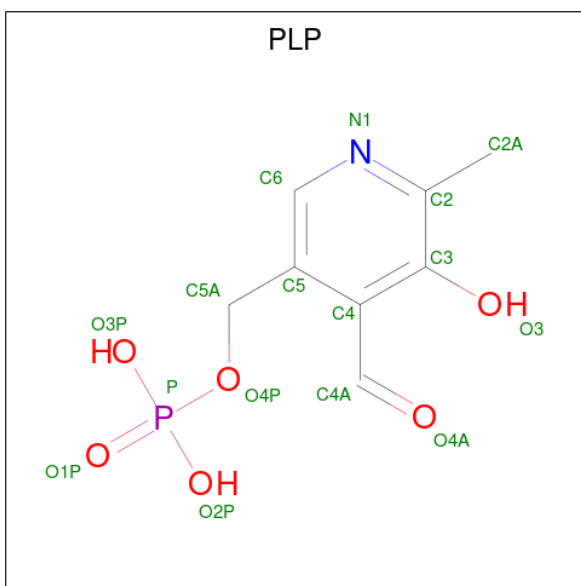
There are 5 unique types of molecules in this entry. The entry contains 4957 atoms, of which 0 are hydrogens and 0 are deuteriums.

In the tables below, the ZeroOcc column contains the number of atoms modelled with zero occupancy, the AltConf column contains the number of residues with at least one atom in alternate conformation and the Trace column contains the number of residues modelled with at most 2 atoms.

- Molecule 1 is a protein called CYSTEINE SYNTHASE, MITOCHONDRIAL.

Mol	Chain	Residues	Atoms					ZeroOcc	AltConf	Trace
			Total	C	N	O	S			
1	A	323	Total	C	N	O	S	0	2	0
			2408	1528	405	461	14			
1	B	319	Total	C	N	O	S	0	2	0
			2384	1513	400	457	14			

- Molecule 2 is PYRIDOXAL-5'-PHOSPHATE (three-letter code: PLP) (formula: C₈H₁₀NO₆P).



Mol	Chain	Residues	Atoms					ZeroOcc	AltConf
			Total	C	N	O	P		
2	A	1	Total	C	N	O	P	0	0
			15	8	1	5	1		
2	B	1	Total	C	N	O	P	0	0
			15	8	1	5	1		

- Molecule 3 is ACETATE ION (three-letter code: ACT) (formula: C₂H₃O₂).



Mol	Chain	Residues	Atoms			ZeroOcc	AltConf
3	A	1	Total	C	O	0	0
			4	2	2		
3	B	1	Total	C	O	0	0
			4	2	2		

- Molecule 4 is GLYCEROL (three-letter code: GOL) (formula: C₃H₈O₃).



Mol	Chain	Residues	Atoms			ZeroOcc	AltConf
4	B	1	Total	C	O	0	0
			6	3	3		

- Molecule 5 is water.

Mol	Chain	Residues	Atoms	ZeroOcc	AltConf
5	A	67	Total O 67 67	0	0
5	B	54	Total O 54 54	0	0

4 Data and refinement statistics

Property	Value	Source
Space group	P 41 21 2	Depositor
Cell constants a, b, c, α , β , γ	65.39Å 65.39Å 293.05Å 90.00° 90.00° 90.00°	Depositor
Resolution (Å)	19.94 – 2.40 19.94 – 2.40	Depositor EDS
% Data completeness (in resolution range)	100.0 (19.94-2.40) 99.8 (19.94-2.40)	Depositor EDS
R_{merge}	0.09	Depositor
R_{sym}	(Not available)	Depositor
$\langle I/\sigma(I) \rangle$ ¹	5.33 (at 2.41Å)	Xtrriage
Refinement program	REFMAC 5.4.0078	Depositor
R, R_{free}	0.180 , 0.233 0.183 , 0.235	Depositor DCC
R_{free} test set	1300 reflections (5.00%)	wwPDB-VP
Wilson B-factor (Å ²)	38.6	Xtrriage
Anisotropy	0.037	Xtrriage
Bulk solvent k_{sol} (e/Å ³), B_{sol} (Å ²)	0.35 , 46.9	EDS
L-test for twinning ²	$\langle L \rangle = 0.47$, $\langle L^2 \rangle = 0.30$	Xtrriage
Estimated twinning fraction	No twinning to report.	Xtrriage
F_o, F_c correlation	0.95	EDS
Total number of atoms	4957	wwPDB-VP
Average B, all atoms (Å ²)	48.0	wwPDB-VP

Xtrriage's analysis on translational NCS is as follows: *The largest off-origin peak in the Patterson function is 4.79% of the height of the origin peak. No significant pseudotranslation is detected.*

¹Intensities estimated from amplitudes.

²Theoretical values of $\langle |L| \rangle$, $\langle L^2 \rangle$ for acentric reflections are 0.5, 0.333 respectively for untwinned datasets, and 0.375, 0.2 for perfectly twinned datasets.

5 Model quality [i](#)

5.1 Standard geometry [i](#)

Bond lengths and bond angles in the following residue types are not validated in this section: ACT, PLP, GOL

The Z score for a bond length (or angle) is the number of standard deviations the observed value is removed from the expected value. A bond length (or angle) with $|Z| > 5$ is considered an outlier worth inspection. RMSZ is the root-mean-square of all Z scores of the bond lengths (or angles).

Mol	Chain	Bond lengths		Bond angles	
		RMSZ	# Z >5	RMSZ	# Z >5
1	A	0.78	0/2452	0.84	2/3311 (0.1%)
1	B	0.80	0/2428	0.79	1/3279 (0.0%)
All	All	0.79	0/4880	0.82	3/6590 (0.0%)

There are no bond length outliers.

All (3) bond angle outliers are listed below:

Mol	Chain	Res	Type	Atoms	Z	Observed(°)	Ideal(°)
1	A	155	ASP	CB-CG-OD1	7.93	125.44	118.30
1	A	253	LEU	CA-CB-CG	-6.45	100.46	115.30
1	B	253	LEU	CA-CB-CG	-5.03	103.72	115.30

There are no chirality outliers.

There are no planarity outliers.

5.2 Too-close contacts [i](#)

In the following table, the Non-H and H(model) columns list the number of non-hydrogen atoms and hydrogen atoms in the chain respectively. The H(added) column lists the number of hydrogen atoms added and optimized by MolProbity. The Clashes column lists the number of clashes within the asymmetric unit, whereas Symm-Clashes lists symmetry-related clashes.

Mol	Chain	Non-H	H(model)	H(added)	Clashes	Symm-Clashes
1	A	2408	0	2483	60	0
1	B	2384	0	2460	49	0
2	A	15	0	7	2	0
2	B	15	0	7	0	0
3	A	4	0	3	0	0
3	B	4	0	3	2	0

Continued on next page...

Continued from previous page...

Mol	Chain	Non-H	H(model)	H(added)	Clashes	Symm-Clashes
4	B	6	0	8	9	0
5	A	67	0	0	1	0
5	B	54	0	0	3	0
All	All	4957	0	4971	107	0

The all-atom clashscore is defined as the number of clashes found per 1000 atoms (including hydrogen atoms). The all-atom clashscore for this structure is 11.

All (107) close contacts within the same asymmetric unit are listed below, sorted by their clash magnitude.

Atom-1	Atom-2	Interatomic distance (Å)	Clash overlap (Å)
1:A:137:VAL:HG12	1:A:395:ALA:HA	1.15	1.09
1:A:415:LEU:HD23	1:A:416:PHE:CE2	1.94	1.03
1:A:209[B]:MET:HE3	1:A:209[B]:MET:HA	1.46	0.97
1:A:137:VAL:CG1	1:A:395:ALA:HA	1.97	0.94
1:B:151:CYS:SG	4:B:1429:GOL:H12	2.09	0.92
1:A:137:VAL:HG12	1:A:395:ALA:CA	2.04	0.86
1:A:383:ALA:O	1:A:386:ILE:HG13	1.78	0.84
1:B:312:GLY:HA3	1:B:348:MET:HE1	1.61	0.82
1:B:147:MET:C	4:B:1429:GOL:H32	2.08	0.73
1:A:137:VAL:HG11	1:A:395:ALA:HB2	1.71	0.73
1:A:415:LEU:HD23	1:A:416:PHE:HE2	1.51	0.73
1:B:147:MET:O	4:B:1429:GOL:H32	1.89	0.73
1:B:116[A]:ASN:ND2	5:B:2001:HOH:O	2.22	0.71
1:A:106:THR:CG2	1:A:107:GLY:N	2.54	0.70
1:A:415:LEU:CD2	1:A:416:PHE:CE2	2.75	0.70
1:B:312:GLY:HA3	1:B:348:MET:CE	2.21	0.70
1:B:413:THR:HB	1:B:414:PRO:CD	2.22	0.69
1:A:137:VAL:CG1	1:A:395:ALA:CA	2.70	0.68
1:A:237:VAL:O	1:A:241:GLU:HG3	1.94	0.68
1:A:106:THR:HG23	1:A:107:GLY:N	2.08	0.68
1:B:147:MET:HA	4:B:1429:GOL:H2	1.74	0.68
1:A:423:VAL:HG23	1:B:214:ARG:NH2	2.10	0.67
1:B:421:GLU:O	1:B:425:LYS:HD3	1.95	0.67
1:B:151:CYS:SG	4:B:1429:GOL:C1	2.83	0.66
1:B:397:LYS:NZ	3:B:1430:ACT:H1	2.11	0.66
1:A:209[B]:MET:HA	1:A:209[B]:MET:CE	2.23	0.65
1:B:241:GLU:O	1:B:245:LYS:HG3	1.96	0.65
1:B:146:ILE:HG22	1:B:405:SER:C	2.19	0.63
1:B:390:LYS:NZ	5:B:2052:HOH:O	2.03	0.62
1:B:116[A]:ASN:HD21	1:B:196:SER:HB2	1.64	0.62

Continued on next page...

Continued from previous page...

Atom-1	Atom-2	Interatomic distance (Å)	Clash overlap (Å)
1:B:267:GLU:O	1:B:271:PRO:HG2	1.99	0.62
1:A:137:VAL:CG1	1:A:395:ALA:CB	2.78	0.61
1:A:206:PRO:O	1:A:209[A]:MET:HG2	2.01	0.61
1:A:106:THR:HG23	1:A:107:GLY:H	1.66	0.60
1:A:182:THR:O	1:A:182:THR:HG23	2.03	0.59
1:A:225:VAL:HG11	1:A:239:LYS:HE2	1.85	0.59
1:B:393[A]:GLU:H	1:B:393[A]:GLU:CD	2.04	0.59
1:B:397:LYS:CE	3:B:1430:ACT:H1	2.34	0.58
1:B:348:MET:CE	1:B:351:VAL:HG22	2.34	0.58
1:B:247:THR:HB	1:B:250:ALA:HB2	1.85	0.58
1:A:204:THR:HG22	1:A:225:VAL:HB	1.85	0.57
1:A:354:ILE:HD12	1:A:384:ALA:HB2	1.85	0.57
1:B:126:MET:HA	1:B:142:ALA:O	2.03	0.57
1:A:344:ASP:OD1	1:A:346:LYS:HB2	2.04	0.57
1:A:282:ASP:C	1:A:283:ILE:HG13	2.25	0.56
1:A:412:SER:HA	1:A:420:ARG:NH1	2.21	0.56
1:B:148:GLU:O	4:B:1429:GOL:H11	2.06	0.56
1:B:413:THR:HB	1:B:414:PRO:HD2	1.87	0.56
1:A:124:THR:OG1	1:A:143:LYS:HE3	2.06	0.55
1:A:137:VAL:HG11	1:A:395:ALA:CB	2.36	0.54
1:A:137:VAL:N	1:A:389:ALA:O	2.36	0.53
1:A:137:VAL:HG12	1:A:137:VAL:O	2.08	0.53
1:A:389:ALA:HB2	1:A:399:ILE:HD12	1.92	0.52
1:B:183:SER:O	1:B:184:GLY:O	2.28	0.52
1:B:182:THR:O	1:B:182:THR:HG23	2.11	0.51
1:A:354:ILE:CD1	1:A:384:ALA:HB2	2.40	0.51
1:A:364:LYS:NZ	1:A:418:SER:OG	2.41	0.51
1:A:247:THR:HB	1:A:250:ALA:HB2	1.91	0.50
1:B:312:GLY:N	1:B:348:MET:HE3	2.27	0.50
1:A:299:ARG:O	1:A:303:GLU:HG3	2.11	0.50
1:B:260:ALA:HA	1:B:263:LYS:HB3	1.93	0.49
1:A:126:MET:HA	1:A:142:ALA:O	2.13	0.49
1:A:360:ILE:CG1	1:A:376:ILE:HD12	2.43	0.49
1:B:348:MET:HE1	1:B:351:VAL:HG22	1.95	0.49
1:B:201:LEU:O	1:B:202:ILE:HD13	2.13	0.49
1:B:413:THR:CB	1:B:414:PRO:CD	2.88	0.48
1:A:360:ILE:HG13	1:A:376:ILE:CD1	2.44	0.48
1:A:417:GLN:HA	1:A:420:ARG:CZ	2.44	0.48
1:A:376:ILE:HG22	5:A:2065:HOH:O	2.13	0.48
1:A:147:MET:HG2	4:B:1429:GOL:H31	1.96	0.47
1:B:406:PHE:O	1:B:410:TYR:HE2	1.97	0.47

Continued on next page...

Continued from previous page...

Atom-1	Atom-2	Interatomic distance (Å)	Clash overlap (Å)
1:A:382:ALA:O	1:A:386:ILE:HG23	2.14	0.47
1:A:297:VAL:CG1	1:A:301:ILE:HD12	2.45	0.47
1:B:314:GLU:OE2	1:B:319:ASP:HB2	2.15	0.46
1:B:312:GLY:CA	1:B:348:MET:CE	2.93	0.46
1:A:373:MET:HB3	1:A:406:PHE:CE1	2.50	0.46
1:A:297:VAL:HG12	1:A:301:ILE:HD12	1.98	0.46
1:B:116[B]:ASN:OD1	1:B:118:SER:HB2	2.15	0.45
1:A:185:ASN:ND2	2:A:500:PLP:H2A1	2.31	0.45
1:B:202:ILE:CD1	1:B:223:GLU:HB2	2.46	0.45
1:B:348:MET:HE2	1:B:351:VAL:HG22	1.99	0.45
1:A:321:LEU:CD2	1:A:339:ILE:HG12	2.47	0.45
1:A:417:GLN:HA	1:A:420:ARG:NE	2.32	0.45
1:A:423:VAL:HG22	1:B:211:MET:SD	2.57	0.45
1:B:406:PHE:O	1:B:410:TYR:CE2	2.71	0.44
1:A:412:SER:HA	1:A:420:ARG:HH11	1.82	0.44
1:B:175:LYS:HB3	1:B:175:LYS:HE2	1.85	0.44
1:A:360:ILE:HG12	1:A:376:ILE:HD12	2.00	0.44
1:B:151:CYS:HG	4:B:1429:GOL:H12	1.76	0.44
1:B:286:ALA:HB3	1:B:294:ILE:HD12	1.99	0.43
1:A:117:VAL:HG23	1:A:120:LEU:HD12	1.99	0.43
1:A:146:ILE:HG21	1:A:374:VAL:HG12	1.99	0.43
1:A:209[B]:MET:HE2	1:A:210:SER:H	1.84	0.43
1:A:321:LEU:HD21	1:A:339:ILE:HG12	1.99	0.43
1:B:283:ILE:HG12	1:B:309:GLN:HB2	2.00	0.43
1:B:147:MET:O	4:B:1429:GOL:C3	2.65	0.42
1:B:413:THR:HB	1:B:414:PRO:HD3	1.99	0.42
1:B:166:GLU:HG2	1:B:199:TYR:OH	2.20	0.42
1:B:386:ILE:O	1:B:390:LYS:HG3	2.19	0.42
1:A:211:MET:O	1:A:215:VAL:HG23	2.20	0.42
1:A:413:THR:HB	1:A:414:PRO:HD2	2.01	0.42
1:B:223:GLU:HA	5:B:2017:HOH:O	2.19	0.41
1:A:154:LYS:NZ	2:A:500:PLP:O3	2.53	0.41
1:B:300:PHE:O	1:B:304:LYS:HG2	2.20	0.41
1:A:350:GLU:HG2	1:A:351:VAL:N	2.36	0.41
1:A:137:VAL:CG1	1:A:137:VAL:O	2.70	0.40
1:A:287:GLY:HA2	1:A:313:VAL:HB	2.03	0.40

There are no symmetry-related clashes.

5.3 Torsion angles [i](#)

5.3.1 Protein backbone [i](#)

In the following table, the Percentiles column shows the percent Ramachandran outliers of the chain as a percentile score with respect to all X-ray entries followed by that with respect to entries of similar resolution.

The Analysed column shows the number of residues for which the backbone conformation was analysed, and the total number of residues.

Mol	Chain	Analysed	Favoured	Allowed	Outliers	Percentiles	
1	A	323/430 (75%)	302 (94%)	20 (6%)	1 (0%)	41	55
1	B	319/430 (74%)	297 (93%)	19 (6%)	3 (1%)	17	25
All	All	642/860 (75%)	599 (93%)	39 (6%)	4 (1%)	25	36

All (4) Ramachandran outliers are listed below:

Mol	Chain	Res	Type
1	A	105	GLU
1	B	184	GLY
1	B	324	GLY
1	B	248	PRO

5.3.2 Protein sidechains [i](#)

In the following table, the Percentiles column shows the percent sidechain outliers of the chain as a percentile score with respect to all X-ray entries followed by that with respect to entries of similar resolution.

The Analysed column shows the number of residues for which the sidechain conformation was analysed, and the total number of residues.

Mol	Chain	Analysed	Rotameric	Outliers	Percentiles	
1	A	258/351 (74%)	251 (97%)	7 (3%)	44	65
1	B	256/351 (73%)	248 (97%)	8 (3%)	40	60
All	All	514/702 (73%)	499 (97%)	15 (3%)	44	62

All (15) residues with a non-rotameric sidechain are listed below:

Mol	Chain	Res	Type
1	A	105	GLU
1	A	106	THR

Continued on next page...

Continued from previous page...

Mol	Chain	Res	Type
1	A	146	ILE
1	A	213	ARG
1	A	218	LYS
1	A	224	LEU
1	A	423	VAL
1	B	176	SER
1	B	218	LYS
1	B	228	ASP
1	B	246	ASN
1	B	257	ASP
1	B	294	ILE
1	B	393[A]	GLU
1	B	393[B]	GLU

Sometimes sidechains can be flipped to improve hydrogen bonding and reduce clashes. All (2) such sidechains are listed below:

Mol	Chain	Res	Type
1	A	130	ASN
1	A	394	ASN

5.3.3 RNA [i](#)

There are no RNA molecules in this entry.

5.4 Non-standard residues in protein, DNA, RNA chains [i](#)

There are no non-standard protein/DNA/RNA residues in this entry.

5.5 Carbohydrates [i](#)

There are no monosaccharides in this entry.

5.6 Ligand geometry [i](#)

5 ligands are modelled in this entry.

In the following table, the Counts columns list the number of bonds (or angles) for which Mogul statistics could be retrieved, the number of bonds (or angles) that are observed in the model and the number of bonds (or angles) that are defined in the Chemical Component Dictionary. The

Link column lists molecule types, if any, to which the group is linked. The Z score for a bond length (or angle) is the number of standard deviations the observed value is removed from the expected value. A bond length (or angle) with $|Z| > 2$ is considered an outlier worth inspection. RMSZ is the root-mean-square of all Z scores of the bond lengths (or angles).

Mol	Type	Chain	Res	Link	Bond lengths			Bond angles		
					Counts	RMSZ	# Z > 2	Counts	RMSZ	# Z > 2
3	ACT	A	1424	-	3,3,3	0.88	0	3,3,3	1.37	0
3	ACT	B	1430	-	3,3,3	0.69	0	3,3,3	1.34	0
4	GOL	B	1429	-	5,5,5	0.31	0	5,5,5	1.40	0
2	PLP	A	500	1	15,15,16	0.75	0	20,22,23	1.47	4 (20%)
2	PLP	B	500	1	15,15,16	1.00	1 (6%)	20,22,23	1.12	1 (5%)

In the following table, the Chirals column lists the number of chiral outliers, the number of chiral centers analysed, the number of these observed in the model and the number defined in the Chemical Component Dictionary. Similar counts are reported in the Torsion and Rings columns. '-' means no outliers of that kind were identified.

Mol	Type	Chain	Res	Link	Chirals	Torsions	Rings
2	PLP	B	500	1	-	1/6/6/8	0/1/1/1
4	GOL	B	1429	-	-	1/4/4/4	-
2	PLP	A	500	1	-	0/6/6/8	0/1/1/1

All (1) bond length outliers are listed below:

Mol	Chain	Res	Type	Atoms	Z	Observed(Å)	Ideal(Å)
2	B	500	PLP	C2-N1	2.01	1.37	1.33

All (5) bond angle outliers are listed below:

Mol	Chain	Res	Type	Atoms	Z	Observed(°)	Ideal(°)
2	A	500	PLP	O4P-C5A-C5	3.15	115.36	109.35
2	A	500	PLP	C6-C5-C4	2.57	120.18	118.16
2	B	500	PLP	C5-C6-N1	-2.48	119.68	123.82
2	A	500	PLP	C4A-C4-C5	-2.14	118.73	120.94
2	A	500	PLP	C5A-C5-C6	-2.10	115.91	119.37

There are no chirality outliers.

All (2) torsion outliers are listed below:

Mol	Chain	Res	Type	Atoms
4	B	1429	GOL	O2-C2-C3-O3
2	B	500	PLP	C5A-O4P-P-O1P

There are no ring outliers.

3 monomers are involved in 13 short contacts:

Mol	Chain	Res	Type	Clashes	Symm-Clashes
3	B	1430	ACT	2	0
4	B	1429	GOL	9	0
2	A	500	PLP	2	0

5.7 Other polymers [i](#)

There are no such residues in this entry.

5.8 Polymer linkage issues [i](#)

There are no chain breaks in this entry.

6 Fit of model and data

6.1 Protein, DNA and RNA chains

In the following table, the column labelled ‘#RSRZ > 2’ contains the number (and percentage) of RSRZ outliers, followed by percent RSRZ outliers for the chain as percentile scores relative to all X-ray entries and entries of similar resolution. The OWAB column contains the minimum, median, 95th percentile and maximum values of the occupancy-weighted average B-factor per residue. The column labelled ‘Q < 0.9’ lists the number of (and percentage) of residues with an average occupancy less than 0.9.

Mol	Chain	Analysed	<RSRZ>	#RSRZ>2	OWAB(Å ²)	Q<0.9
1	A	323/430 (75%)	-0.12	16 (4%) 28 27	22, 47, 74, 105	0
1	B	319/430 (74%)	-0.05	18 (5%) 24 23	20, 45, 83, 102	0
All	All	642/860 (74%)	-0.08	34 (5%) 26 25	20, 46, 79, 105	0

All (34) RSRZ outliers are listed below:

Mol	Chain	Res	Type	RSRZ
1	A	108	PRO	5.8
1	A	417	GLN	4.3
1	B	248	PRO	4.2
1	A	423	VAL	4.2
1	B	245	LYS	4.0
1	B	422	GLU	3.1
1	B	327	GLY	3.0
1	A	101	ALA	2.9
1	B	175	LYS	2.9
1	B	322	SER	2.8
1	B	257	ASP	2.8
1	B	229	PRO	2.8
1	A	413	THR	2.7
1	A	416	PHE	2.7
1	A	422	GLU	2.6
1	A	248	PRO	2.6
1	B	228	ASP	2.6
1	A	421	GLU	2.6
1	B	425	LYS	2.5
1	B	231	LYS	2.5
1	A	327	GLY	2.5
1	A	328	PRO	2.5
1	B	230	ALA	2.4
1	B	326	PRO	2.4

Continued on next page...

Continued from previous page...

Mol	Chain	Res	Type	RSRZ
1	A	419	ILE	2.4
1	B	328	PRO	2.4
1	A	107	GLY	2.3
1	A	131	SER	2.3
1	B	427	GLN	2.2
1	A	325	LYS	2.2
1	B	323	GLY	2.2
1	B	249	ASP	2.2
1	B	421	GLU	2.2
1	A	395	ALA	2.0

6.2 Non-standard residues in protein, DNA, RNA chains [i](#)

There are no non-standard protein/DNA/RNA residues in this entry.

6.3 Carbohydrates [i](#)

There are no monosaccharides in this entry.

6.4 Ligands [i](#)

In the following table, the Atoms column lists the number of modelled atoms in the group and the number defined in the chemical component dictionary. The B-factors column lists the minimum, median, 95th percentile and maximum values of B factors of atoms in the group. The column labelled 'Q< 0.9' lists the number of atoms with occupancy less than 0.9.

Mol	Type	Chain	Res	Atoms	RSCC	RSR	B-factors(Å ²)	Q<0.9
3	ACT	B	1430	4/4	0.90	0.16	54,54,55,56	0
4	GOL	B	1429	6/6	0.92	0.24	42,46,46,47	0
3	ACT	A	1424	4/4	0.93	0.24	38,39,40,40	0
2	PLP	A	500	15/16	0.95	0.13	26,30,35,36	0
2	PLP	B	500	15/16	0.97	0.12	31,34,37,39	0

6.5 Other polymers [i](#)

There are no such residues in this entry.