



# Full wwPDB X-ray Structure Validation Report ⓘ

Oct 22, 2023 – 11:54 PM EDT

PDB ID : 3AEB  
Title : Crystal structure of porcine heart mitochondrial complex II bound with N-(3-Phenoxy-phenyl)-2-trifluoromethyl-benzamide  
Authors : Harada, S.; Sasaki, T.; Shindo, M.; Kido, Y.; Inaoka, D.K.; Omori, J.; Osanai, A.; Sakamoto, K.; Mao, J.; Matsuoka, S.; Inoue, M.; Honma, T.; Tanaka, A.; Kita, K.  
Deposited on : 2010-02-04  
Resolution : 3.00 Å(reported)

This is a Full wwPDB X-ray Structure Validation Report for a publicly released PDB entry.

We welcome your comments at [validation@mail.wwpdb.org](mailto:validation@mail.wwpdb.org)

A user guide is available at

<https://www.wwpdb.org/validation/2017/XrayValidationReportHelp>

with specific help available everywhere you see the ⓘ symbol.

The types of validation reports are described at

<http://www.wwpdb.org/validation/2017/FAQs#types>.

---

The following versions of software and data (see [references](#) ①) were used in the production of this report:

MolProbity : 4.02b-467  
Mogul : 1.8.5 (274361), CSD as541be (2020)  
Xtrriage (Phenix) : 1.13  
EDS : 2.36  
buster-report : 1.1.7 (2018)  
Percentile statistics : 20191225.v01 (using entries in the PDB archive December 25th 2019)  
Refmac : 5.8.0158  
CCP4 : 7.0.044 (Gargrove)  
Ideal geometry (proteins) : Engh & Huber (2001)  
Ideal geometry (DNA, RNA) : Parkinson et al. (1996)  
Validation Pipeline (wwPDB-VP) : 2.36

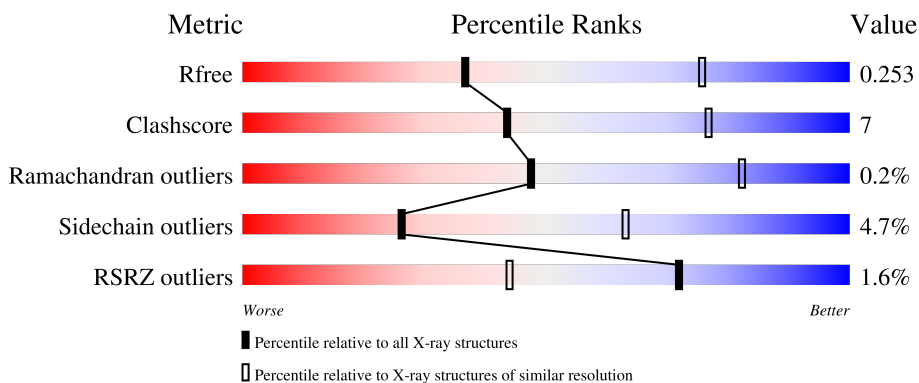
# 1 Overall quality at a glance i

The following experimental techniques were used to determine the structure:

*X-RAY DIFFRACTION*

The reported resolution of this entry is 3.00 Å.

Percentile scores (ranging between 0-100) for global validation metrics of the entry are shown in the following graphic. The table shows the number of entries on which the scores are based.



Metric	Whole archive (#Entries)	Similar resolution (#Entries, resolution range(Å))
$R_{free}$	130704	2092 (3.00-3.00)
Clashscore	141614	2416 (3.00-3.00)
Ramachandran outliers	138981	2333 (3.00-3.00)
Sidechain outliers	138945	2336 (3.00-3.00)
RSRZ outliers	127900	1990 (3.00-3.00)

The table below summarises the geometric issues observed across the polymeric chains and their fit to the electron density. The red, orange, yellow and green segments of the lower bar indicate the fraction of residues that contain outliers for  $\geq 3$ , 2, 1 and 0 types of geometric quality criteria respectively. A grey segment represents the fraction of residues that are not modelled. The numeric value for each fraction is indicated below the corresponding segment, with a dot representing fractions  $\leq 5\%$ . The upper red bar (where present) indicates the fraction of residues that have poor fit to the electron density. The numeric value is given above the bar.

Mol	Chain	Length	Quality of chain
1	A	622	<div style="display: flex; align-items: center;"> <div style="width: 2%; height: 10px; background-color: red; margin-right: 2px;"></div> <div style="width: 81%; height: 10px; background-color: green; margin-right: 2px;"></div> <div style="width: 17%; height: 10px; background-color: yellow; margin-right: 2px;"></div> <div style="width: 2%; height: 10px; background-color: grey;"></div> </div> <p style="margin-left: 20px;">2%      81%      17%      ..</p>
2	B	252	<div style="display: flex; align-items: center;"> <div style="width: 1%; height: 10px; background-color: red; margin-right: 2px;"></div> <div style="width: 81%; height: 10px; background-color: green; margin-right: 2px;"></div> <div style="width: 13%; height: 10px; background-color: yellow; margin-right: 2px;"></div> <div style="width: 5%; height: 10px; background-color: grey;"></div> </div> <p style="margin-left: 20px;">%      81%      13%      • 5%</p>
3	C	140	<div style="display: flex; align-items: center;"> <div style="width: 1%; height: 10px; background-color: red; margin-right: 2px;"></div> <div style="width: 89%; height: 10px; background-color: green; margin-right: 2px;"></div> <div style="width: 9%; height: 10px; background-color: yellow; margin-right: 2px;"></div> <div style="width: 1%; height: 10px; background-color: grey;"></div> </div> <p style="margin-left: 20px;">%      89%      9%      ..</p>
4	D	103	<div style="display: flex; align-items: center;"> <div style="width: 2%; height: 10px; background-color: red; margin-right: 2px;"></div> <div style="width: 84%; height: 10px; background-color: green; margin-right: 2px;"></div> <div style="width: 14%; height: 10px; background-color: yellow; margin-right: 2px;"></div> <div style="width: 2%; height: 10px; background-color: grey;"></div> </div> <p style="margin-left: 20px;">2%      84%      14%      ..</p>

The following table lists non-polymeric compounds, carbohydrate monomers and non-standard

residues in protein, DNA, RNA chains that are outliers for geometric or electron-density-fit criteria:

Mol	Type	Chain	Res	Chirality	Geometry	Clashes	Electron density
12	EPH	D	1306	X	-	X	X
8	F3S	B	304	-	-	X	-

## 2 Entry composition

There are 12 unique types of molecules in this entry. The entry contains 8672 atoms, of which 0 are hydrogens and 0 are deuteriums.

In the tables below, the ZeroOcc column contains the number of atoms modelled with zero occupancy, the AltConf column contains the number of residues with at least one atom in alternate conformation and the Trace column contains the number of residues modelled with at most 2 atoms.

- Molecule 1 is a protein called Succinate dehydrogenase [ubiquinone] flavoprotein subunit, mitochondrial.

Mol	Chain	Residues	Atoms					ZeroOcc	AltConf	Trace
			Total	C	N	O	S			
1	A	613	4729	2954	848	895	32	0	0	0

- Molecule 2 is a protein called Succinate dehydrogenase [ubiquinone] iron-sulfur subunit, mitochondrial.

Mol	Chain	Residues	Atoms					ZeroOcc	AltConf	Trace
			Total	C	N	O	S			
2	B	239	1922	1214	326	360	22	0	0	0

- Molecule 3 is a protein called Succinate dehydrogenase cytochrome b560 subunit, mitochondrial.

Mol	Chain	Residues	Atoms					ZeroOcc	AltConf	Trace
			Total	C	N	O	S			
3	C	138	1064	695	179	183	7	0	0	0

- Molecule 4 is a protein called Succinate dehydrogenase [ubiquinone] cytochrome b small subunit, mitochondrial.

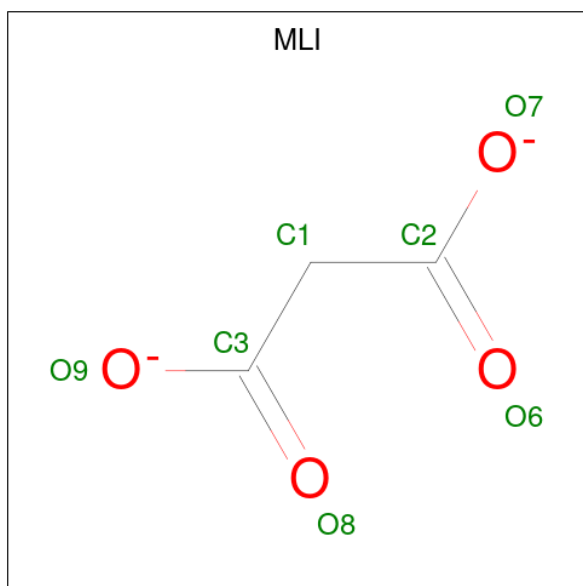
Mol	Chain	Residues	Atoms					ZeroOcc	AltConf	Trace
			Total	C	N	O	S			
4	D	102	765	499	128	133	5	0	0	0

- Molecule 5 is FLAVIN-ADENINE DINUCLEOTIDE (three-letter code: FAD) (formula:  $C_{27}H_{33}N_9O_{15}P_2$ ).



Mol	Chain	Residues	Atoms					ZeroOcc	AltConf
			Total	C	N	O	P		
5	A	1	53	27	9	15	2	0	0

- Molecule 6 is MALONATE ION (three-letter code: MLI) (formula:  $C_3H_2O_4$ ).



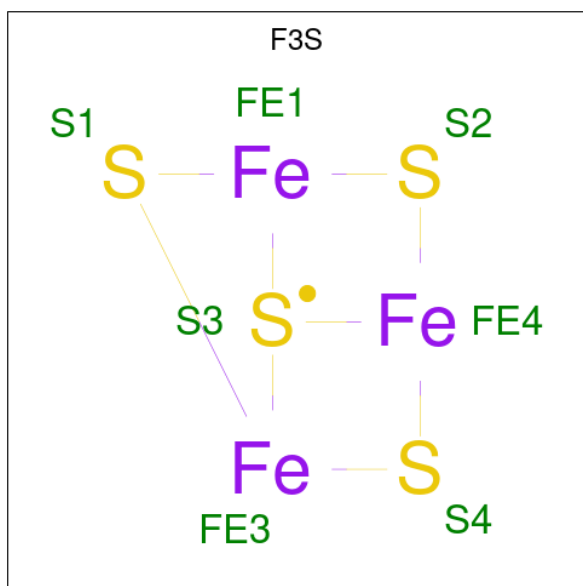
Mol	Chain	Residues	Atoms			ZeroOcc	AltConf
			Total	C	O		
6	A	1	7	3	4	0	0

- Molecule 7 is FE2/S2 (INORGANIC) CLUSTER (three-letter code: FES) (formula:  $Fe_2S_2$ ).



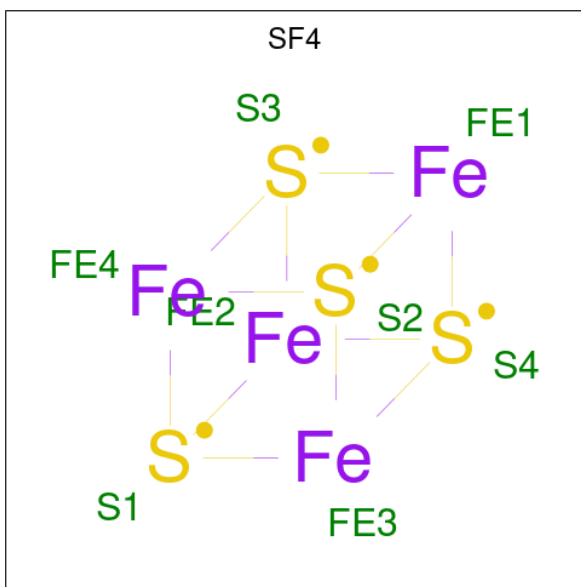
Mol	Chain	Residues	Atoms			ZeroOcc	AltConf
			Total	Fe	S		
7	B	1	4	2	2	0	0

- Molecule 8 is FE3-S4 CLUSTER (three-letter code: F3S) (formula:  $\text{Fe}_3\text{S}_4$ ).



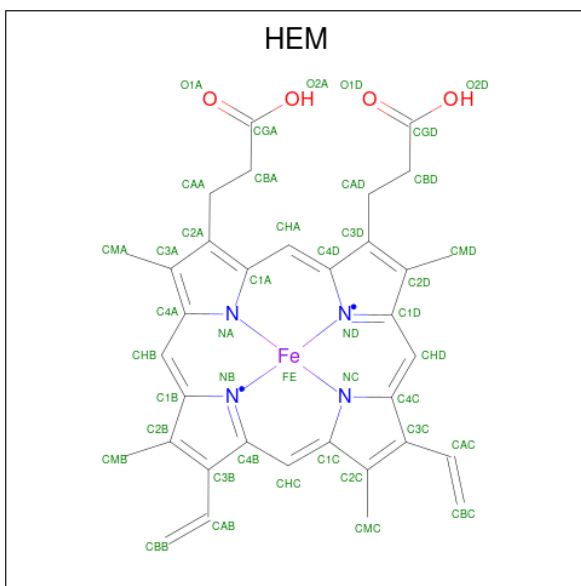
Mol	Chain	Residues	Atoms			ZeroOcc	AltConf
			Total	Fe	S		
8	B	1	7	3	4	0	0

- Molecule 9 is IRON/SULFUR CLUSTER (three-letter code: SF4) (formula:  $\text{Fe}_4\text{S}_4$ ).



Mol	Chain	Residues	Atoms				ZeroOcc	AltConf
9	B	1	Total	Fe	S			
			8	4	4	0	0	

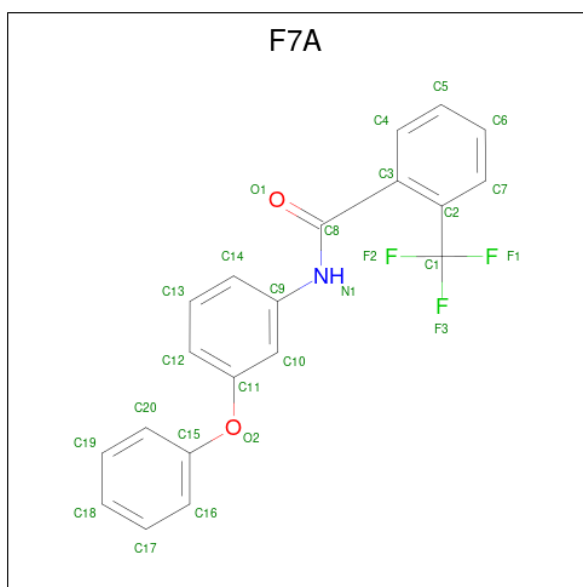
- Molecule 10 is PROTOPORPHYRIN IX CONTAINING FE (three-letter code: HEM) (formula:  $C_{34}H_{32}FeN_4O_4$ ).



Mol	Chain	Residues	Atoms				ZeroOcc	AltConf
10	C	1	Total	C	Fe	N	O	
			43	34	1	4	4	0

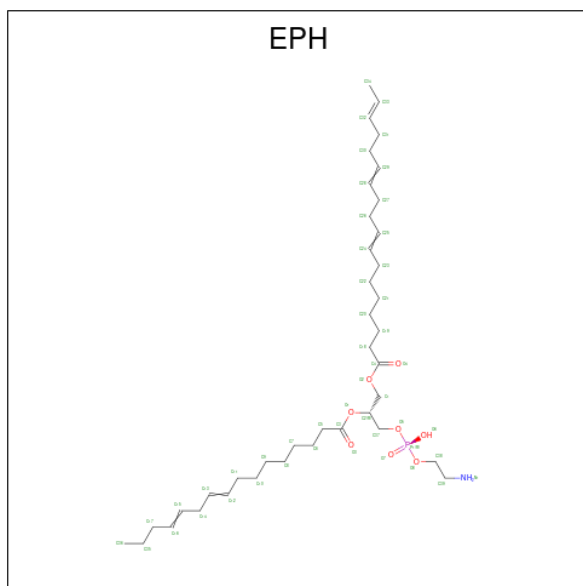
- Molecule 11 is N-(3-phenoxyphenyl)-2-(trifluoromethyl)benzamide (three-letter code: F7A) (formula:  $C_{20}H_{14}F_3NO_2$ ).





Mol	Chain	Residues	Atoms					ZeroOcc	AltConf
			Total	C	F	N	O		
11	C	1	26	20	3	1	2	0	0

- Molecule 12 is L-ALPHA-PHOSPHATIDYL-BETA-OLEOYL-GAMMA-PALMITOYL-PHOSPHATIDYLETHANOLAMINE (three-letter code: EPH) (formula:  $C_{39}H_{68}NO_8P$ ).

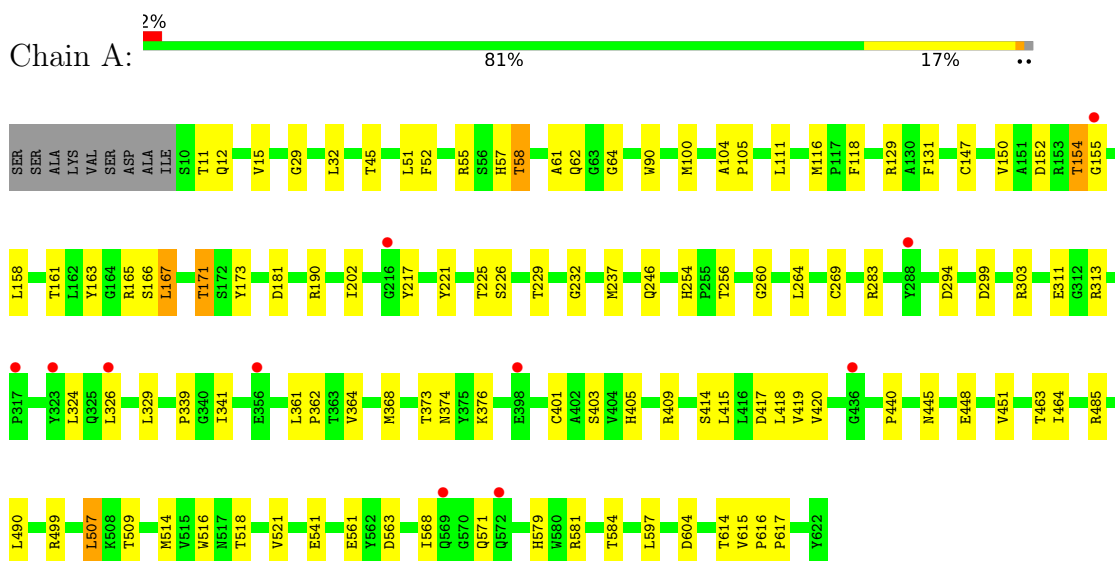


Mol	Chain	Residues	Atoms					ZeroOcc	AltConf
			Total	C	N	O	P		
12	D	1	44	34	1	8	1	0	0

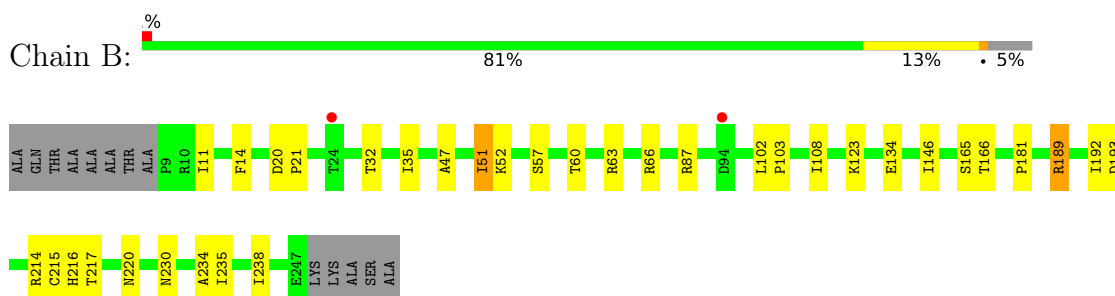
### 3 Residue-property plots [i](#)

These plots are drawn for all protein, RNA, DNA and oligosaccharide chains in the entry. The first graphic for a chain summarises the proportions of the various outlier classes displayed in the second graphic. The second graphic shows the sequence view annotated by issues in geometry and electron density. Residues are color-coded according to the number of geometric quality criteria for which they contain at least one outlier: green = 0, yellow = 1, orange = 2 and red = 3 or more. A red dot above a residue indicates a poor fit to the electron density ( $RSRZ > 2$ ). Stretches of 2 or more consecutive residues without any outlier are shown as a green connector. Residues present in the sample, but not in the model, are shown in grey.

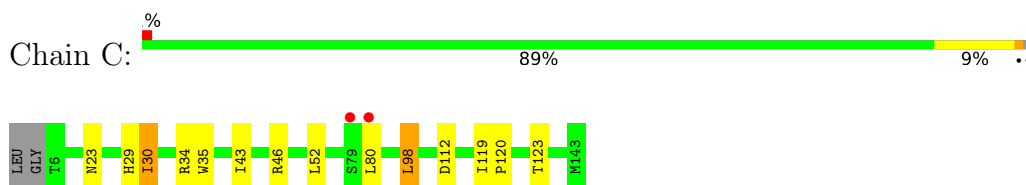
- Molecule 1: Succinate dehydrogenase [ubiquinone] flavoprotein subunit, mitochondrial




- Molecule 2: Succinate dehydrogenase [ubiquinone] iron-sulfur subunit, mitochondrial



- Molecule 3: Succinate dehydrogenase cytochrome b560 subunit, mitochondrial



- Molecule 4: Succinate dehydrogenase [ubiquinone] cytochrome b small subunit, mitochondrial

Chain D:  2% 84% 14% ..



## 4 Data and refinement statistics

Property	Value	Source
Space group	P 21 21 21	Depositor
Cell constants a, b, c, $\alpha$ , $\beta$ , $\gamma$	71.71Å 84.25Å 294.71Å 90.00° 90.00° 90.00°	Depositor
Resolution (Å)	42.43 – 3.00 42.43 – 3.00	Depositor EDS
% Data completeness (in resolution range)	91.8 (42.43-3.00) 91.8 (42.43-3.00)	Depositor EDS
$R_{merge}$	0.09	Depositor
$R_{sym}$	(Not available)	Depositor
$\langle I/\sigma(I) \rangle$ <sup>1</sup>	3.13 (at 3.01Å)	Xtrriage
Refinement program	REFMAC	Depositor
R, $R_{free}$	0.215 , 0.257 0.213 , 0.253	Depositor DCC
$R_{free}$ test set	1693 reflections (5.03%)	wwPDB-VP
Wilson B-factor (Å <sup>2</sup> )	73.8	Xtrriage
Anisotropy	0.198	Xtrriage
Bulk solvent $k_{sol}$ (e/Å <sup>3</sup> ), $B_{sol}$ (Å <sup>2</sup> )	0.32 , 31.7	EDS
L-test for twinning <sup>2</sup>	$\langle  L  \rangle = 0.49$ , $\langle L^2 \rangle = 0.32$	Xtrriage
Estimated twinning fraction	No twinning to report.	Xtrriage
$F_o, F_c$ correlation	0.92	EDS
Total number of atoms	8672	wwPDB-VP
Average B, all atoms (Å <sup>2</sup> )	75.0	wwPDB-VP

Xtrriage's analysis on translational NCS is as follows: *The largest off-origin peak in the Patterson function is 3.10% of the height of the origin peak. No significant pseudotranslation is detected.*

<sup>1</sup>Intensities estimated from amplitudes.

<sup>2</sup>Theoretical values of  $\langle |L| \rangle$ ,  $\langle L^2 \rangle$  for acentric reflections are 0.5, 0.333 respectively for untwinned datasets, and 0.375, 0.2 for perfectly twinned datasets.

## 5 Model quality

### 5.1 Standard geometry

Bond lengths and bond angles in the following residue types are not validated in this section: SF4, F3S, FAD, FES, HEM, EPH, MLI, F7A

The Z score for a bond length (or angle) is the number of standard deviations the observed value is removed from the expected value. A bond length (or angle) with  $|Z| > 5$  is considered an outlier worth inspection. RMSZ is the root-mean-square of all Z scores of the bond lengths (or angles).

Mol	Chain	Bond lengths		Bond angles	
		RMSZ	# Z  >5	RMSZ	# Z  >5
1	A	0.32	0/4828	0.50	0/6531
2	B	0.32	0/1964	0.48	0/2648
3	C	0.33	0/1091	0.45	0/1483
4	D	0.30	0/784	0.46	0/1066
All	All	0.32	0/8667	0.49	0/11728

There are no bond length outliers.

There are no bond angle outliers.

There are no chirality outliers.

There are no planarity outliers.

### 5.2 Too-close contacts

In the following table, the Non-H and H(model) columns list the number of non-hydrogen atoms and hydrogen atoms in the chain respectively. The H(added) column lists the number of hydrogen atoms added and optimized by MolProbity. The Clashes column lists the number of clashes within the asymmetric unit, whereas Symm-Clashes lists symmetry-related clashes.

Mol	Chain	Non-H	H(model)	H(added)	Clashes	Symm-Clashes
1	A	4729	0	4618	59	0
2	B	1922	0	1900	18	0
3	C	1064	0	1104	9	0
4	D	765	0	773	12	0
5	A	53	0	31	7	0
6	A	7	0	2	0	0
7	B	4	0	0	0	0
8	B	7	0	0	2	0
9	B	8	0	0	0	0

*Continued on next page...*

*Continued from previous page...*

Mol	Chain	Non-H	H(model)	H(added)	Clashes	Symm-Clashes
10	C	43	0	30	2	0
11	C	26	0	14	4	0
12	D	44	0	53	24	0
All	All	8672	0	8525	114	0

The all-atom clashscore is defined as the number of clashes found per 1000 atoms (including hydrogen atoms). The all-atom clashscore for this structure is 7.

All (114) close contacts within the same asymmetric unit are listed below, sorted by their clash magnitude.

Atom-1	Atom-2	Interatomic distance (Å)	Clash overlap (Å)
1:A:57:HIS:NE2	5:A:700:FAD:HM82	1.20	1.52
1:A:57:HIS:CE1	5:A:700:FAD:HM82	1.86	1.11
1:A:61:ALA:HB3	1:A:155:GLY:HA3	1.44	0.96
2:B:102:LEU:HB3	2:B:166:THR:HG21	1.45	0.95
12:D:1306:EPH:P1	12:D:1306:EPH:O1	2.30	0.89
12:D:1306:EPH:P1	12:D:1306:EPH:HN11	1.97	0.87
12:D:1306:EPH:P1	12:D:1306:EPH:N1	2.48	0.85
12:D:1306:EPH:O6	12:D:1306:EPH:H2	1.75	0.84
12:D:1306:EPH:O6	12:D:1306:EPH:C2	2.28	0.81
1:A:29:GLY:H	1:A:58:THR:HG21	1.47	0.80
3:C:52:LEU:HB3	10:C:1305:HEM:HAC	1.63	0.79
12:D:1306:EPH:O3	12:D:1306:EPH:C37	2.30	0.78
4:D:61:TYR:CE1	12:D:1306:EPH:H372	2.20	0.76
12:D:1306:EPH:O3	12:D:1306:EPH:H371	1.83	0.76
4:D:130:VAL:HG22	12:D:1306:EPH:H28	1.73	0.71
1:A:150:VAL:H	1:A:154:THR:HB	1.59	0.67
1:A:116:MET:HA	1:A:161:THR:HG21	1.78	0.65
12:D:1306:EPH:N1	12:D:1306:EPH:O7	2.30	0.64
1:A:62:GLN:HE21	1:A:264:LEU:HD23	1.62	0.64
12:D:1306:EPH:O7	12:D:1306:EPH:C3	2.45	0.64
12:D:1306:EPH:C39	12:D:1306:EPH:O5	2.44	0.64
1:A:64:GLY:HA2	1:A:154:THR:HG21	1.80	0.63
1:A:57:HIS:CE1	1:A:226:SER:HA	2.33	0.62
1:A:57:HIS:NE2	5:A:700:FAD:HM81	2.09	0.62
1:A:190:ARG:HD2	1:A:440:PRO:HB2	1.83	0.61
11:C:1201:F7A:H14	11:C:1201:F7A:O1	2.01	0.60
4:D:61:TYR:CD1	12:D:1306:EPH:H372	2.37	0.60
1:A:158:LEU:HD23	1:A:415:LEU:HD22	1.84	0.59
1:A:518:THR:HA	1:A:521:VAL:HG22	1.84	0.58
2:B:47:ALA:O	2:B:51:ILE:HG23	2.05	0.56

*Continued on next page...*

*Continued from previous page...*

Atom-1	Atom-2	Interatomic distance (Å)	Clash overlap (Å)
2:B:165:SER:HA	2:B:181:PRO:HD2	1.87	0.56
1:A:11:THR:HG22	1:A:11:THR:O	2.05	0.55
4:D:134:TRP:CD1	12:D:1306:EPH:H181	2.41	0.55
1:A:118:PHE:HA	1:A:150:VAL:HG22	1.88	0.55
1:A:171:THR:HB	1:A:173:TYR:CE1	2.43	0.54
1:A:254:HIS:HD2	1:A:256:THR:H	1.56	0.54
1:A:415:LEU:HG	5:A:700:FAD:C2	2.38	0.52
3:C:29:HIS:HD2	3:C:30:ILE:HG23	1.73	0.52
4:D:53:LEU:HD11	4:D:76:LEU:HD12	1.92	0.52
12:D:1306:EPH:O1	12:D:1306:EPH:O6	2.27	0.52
1:A:246:GLN:HA	1:A:584:THR:O	2.10	0.51
12:D:1306:EPH:P1	12:D:1306:EPH:C3	2.97	0.51
1:A:111:LEU:HD11	1:A:419:VAL:HG21	1.92	0.51
1:A:414:SER:HA	1:A:417:ASP:HB3	1.93	0.51
1:A:163:TYR:O	1:A:167:LEU:HD22	2.11	0.51
1:A:52:PHE:HB3	1:A:55:ARG:HG2	1.92	0.51
2:B:181:PRO:HA	2:B:235:ILE:HD11	1.93	0.50
2:B:181:PRO:HG3	8:B:304:F3S:S3	2.51	0.50
12:D:1306:EPH:O1	12:D:1306:EPH:O7	2.30	0.49
12:D:1306:EPH:O3	12:D:1306:EPH:O7	2.30	0.49
12:D:1306:EPH:H192	12:D:1306:EPH:C1	2.41	0.49
1:A:45:THR:HB	1:A:171:THR:HG23	1.95	0.49
1:A:361:LEU:HD12	1:A:362:PRO:HD2	1.94	0.49
1:A:264:LEU:HD22	5:A:700:FAD:C6	2.43	0.49
12:D:1306:EPH:O3	12:D:1306:EPH:O5	2.30	0.48
12:D:1306:EPH:C1	12:D:1306:EPH:C19	2.92	0.47
1:A:152:ASP:HB2	1:A:339:PRO:HD2	1.96	0.47
1:A:51:LEU:HD21	1:A:229:THR:HG21	1.94	0.47
1:A:464:ILE:O	1:A:507:LEU:HA	2.15	0.47
4:D:77:THR:HG21	4:D:113:PHE:HB2	1.95	0.47
1:A:150:VAL:HB	1:A:154:THR:HA	1.96	0.47
1:A:516:TRP:HB3	2:B:60:THR:HG21	1.96	0.47
1:A:269:CYS:SG	1:A:341:ILE:HD13	2.54	0.47
1:A:254:HIS:CD2	1:A:256:THR:H	2.32	0.47
3:C:35:TRP:CE2	11:C:1201:F7A:H18	2.49	0.47
1:A:181:ASP:HA	1:A:237:MET:HG2	1.97	0.46
1:A:568:ILE:HG13	1:A:568:ILE:O	2.14	0.46
1:A:579:HIS:HD2	1:A:581:ARG:H	1.61	0.46
1:A:563:ASP:H	1:A:571:GLN:HE22	1.63	0.46
2:B:14:PHE:O	2:B:32:THR:HA	2.15	0.46
3:C:112:ASP:OD1	4:D:47:ARG:HD2	2.15	0.46

*Continued on next page...*

*Continued from previous page...*

Atom-1	Atom-2	Interatomic distance (Å)	Clash overlap (Å)
1:A:221:TYR:CG	1:A:364:VAL:HG21	2.51	0.45
1:A:269:CYS:HB3	1:A:326:LEU:HD21	1.97	0.45
2:B:234:ALA:O	2:B:238:ILE:HG13	2.17	0.45
3:C:52:LEU:HD21	3:C:98:LEU:HA	1.97	0.45
1:A:405:HIS:ND1	1:A:409:ARG:HG3	2.31	0.45
1:A:299:ASP:O	1:A:303:ARG:HB2	2.17	0.45
12:D:1306:EPH:O5	12:D:1306:EPH:H391	2.17	0.45
3:C:46:ARG:HE	10:C:1305:HEM:CGD	2.30	0.45
2:B:21:PRO:HG3	2:B:108:ILE:O	2.17	0.45
4:D:134:TRP:CG	12:D:1306:EPH:H181	2.52	0.45
1:A:167:LEU:HG	2:B:123:LYS:HG3	1.99	0.44
2:B:216:HIS:CD2	11:C:1201:F7A:H7	2.53	0.44
1:A:166:SER:HB2	1:A:173:TYR:OH	2.18	0.44
1:A:485:ARG:HD2	1:A:490:LEU:HD21	1.98	0.44
1:A:104:ALA:HB3	1:A:105:PRO:HD3	2.00	0.44
1:A:90:TRP:CE2	1:A:617:PRO:HA	2.52	0.44
1:A:57:HIS:NE2	5:A:700:FAD:C8	2.73	0.44
4:D:57:LEU:HB2	4:D:58:PRO:HD3	2.00	0.43
4:D:72:LEU:HD21	12:D:1306:EPH:H101	1.99	0.43
1:A:604:ASP:O	1:A:614:THR:HG23	2.18	0.43
1:A:225:THR:HB	1:A:264:LEU:HB2	2.01	0.42
2:B:20:ASP:HA	2:B:21:PRO:HD3	1.86	0.42
2:B:189:ARG:NH2	2:B:193:ASP:OD1	2.52	0.42
4:D:124:VAL:HG22	4:D:128:LYS:HG2	2.01	0.42
2:B:146:ILE:H	2:B:146:ILE:HG13	1.60	0.42
1:A:129:ARG:O	1:A:147:CYS:HB3	2.20	0.42
2:B:102:LEU:HA	2:B:103:PRO:HD2	1.85	0.42
1:A:401:CYS:C	1:A:403:SER:H	2.23	0.42
2:B:215:CYS:HA	8:B:304:F3S:S2	2.60	0.41
1:A:29:GLY:HA3	1:A:418:LEU:HD23	2.00	0.41
2:B:35:ILE:HD11	2:B:51:ILE:HG22	2.02	0.41
2:B:52:LYS:HD2	2:B:57:SER:HA	2.03	0.41
1:A:100:MET:HA	1:A:420:VAL:HG11	2.02	0.41
1:A:445:ASN:O	1:A:448:GLU:HB2	2.20	0.41
1:A:217:TYR:HB3	1:A:232:GLY:HA3	2.04	0.40
3:C:43:ILE:HD11	11:C:1201:F7A:H16	2.02	0.40
3:C:46:ARG:NE	4:D:87:VAL:HG22	2.36	0.40
1:A:202:ILE:HD13	1:A:451:VAL:HG22	2.03	0.40
5:A:700:FAD:H9	5:A:700:FAD:H1'1	1.80	0.40
3:C:119:ILE:N	3:C:120:PRO:HD2	2.36	0.40
1:A:374:ASN:HB3	1:A:376:LYS:H	1.86	0.40

*Continued on next page...*



Continued from previous page...

Atom-1	Atom-2	Interatomic distance (Å)	Clash overlap (Å)
1:A:463:THR:HG23	1:A:464:ILE:HG13	2.03	0.40
1:A:615:VAL:HA	1:A:616:PRO:HD2	1.98	0.40

There are no symmetry-related clashes.

## 5.3 Torsion angles [i](#)

### 5.3.1 Protein backbone [i](#)

In the following table, the Percentiles column shows the percent Ramachandran outliers of the chain as a percentile score with respect to all X-ray entries followed by that with respect to entries of similar resolution.

The Analysed column shows the number of residues for which the backbone conformation was analysed, and the total number of residues.

Mol	Chain	Analysed	Favoured	Allowed	Outliers	Percentiles	
1	A	611/622 (98%)	582 (95%)	27 (4%)	2 (0%)	41	76
2	B	237/252 (94%)	227 (96%)	10 (4%)	0	100	100
3	C	136/140 (97%)	130 (96%)	6 (4%)	0	100	100
4	D	100/103 (97%)	96 (96%)	4 (4%)	0	100	100
All	All	1084/1117 (97%)	1035 (96%)	47 (4%)	2 (0%)	47	82

All (2) Ramachandran outliers are listed below:

Mol	Chain	Res	Type
1	A	260	GLY
1	A	283	ARG

### 5.3.2 Protein sidechains [i](#)

In the following table, the Percentiles column shows the percent sidechain outliers of the chain as a percentile score with respect to all X-ray entries followed by that with respect to entries of similar resolution.

The Analysed column shows the number of residues for which the sidechain conformation was analysed, and the total number of residues.

Mol	Chain	Analysed	Rotameric	Outliers	Percentiles	
1	A	499/506 (99%)	476 (95%)	23 (5%)	27	64
2	B	214/220 (97%)	202 (94%)	12 (6%)	21	56
3	C	117/118 (99%)	111 (95%)	6 (5%)	24	60
4	D	76/76 (100%)	74 (97%)	2 (3%)	46	78
All	All	906/920 (98%)	863 (95%)	43 (5%)	26	63

All (43) residues with a non-rotameric sidechain are listed below:

Mol	Chain	Res	Type
1	A	12	GLN
1	A	15	VAL
1	A	32	LEU
1	A	58	THR
1	A	131	PHE
1	A	154	THR
1	A	165	ARG
1	A	167	LEU
1	A	171	THR
1	A	294	ASP
1	A	311	GLU
1	A	313	ARG
1	A	324	LEU
1	A	329	LEU
1	A	368	MET
1	A	373	THR
1	A	499	ARG
1	A	507	LEU
1	A	509	THR
1	A	514	MET
1	A	541	GLU
1	A	561	GLU
1	A	597	LEU
2	B	11	ILE
2	B	51	ILE
2	B	63	ARG
2	B	66	ARG
2	B	87	ARG
2	B	134	GLU
2	B	189	ARG
2	B	192	ILE
2	B	214	ARG
2	B	217	THR

*Continued on next page...*

*Continued from previous page...*

Mol	Chain	Res	Type
2	B	220	ASN
2	B	230	ASN
3	C	23	ASN
3	C	30	ILE
3	C	34	ARG
3	C	80	LEU
3	C	98	LEU
3	C	123	THR
4	D	78	LEU
4	D	124	VAL

Sometimes sidechains can be flipped to improve hydrogen bonding and reduce clashes. All (20) such sidechains are listed below:

Mol	Chain	Res	Type
1	A	44	ASN
1	A	62	GLN
1	A	113	ASN
1	A	128	GLN
1	A	143	GLN
1	A	254	HIS
1	A	374	ASN
1	A	378	GLN
1	A	384	ASN
1	A	474	GLN
1	A	571	GLN
1	A	579	HIS
2	B	38	ASN
2	B	121	GLN
2	B	174	ASN
2	B	220	ASN
2	B	230	ASN
3	C	17	ASN
3	C	29	HIS
3	C	104	ASN

### 5.3.3 RNA [i](#)

There are no RNA molecules in this entry.

## 5.4 Non-standard residues in protein, DNA, RNA chains [i](#)

There are no non-standard protein/DNA/RNA residues in this entry.

## 5.5 Carbohydrates [i](#)

There are no monosaccharides in this entry.

## 5.6 Ligand geometry [i](#)

8 ligands are modelled in this entry.

In the following table, the Counts columns list the number of bonds (or angles) for which Mogul statistics could be retrieved, the number of bonds (or angles) that are observed in the model and the number of bonds (or angles) that are defined in the Chemical Component Dictionary. The Link column lists molecule types, if any, to which the group is linked. The Z score for a bond length (or angle) is the number of standard deviations the observed value is removed from the expected value. A bond length (or angle) with  $|Z| > 2$  is considered an outlier worth inspection. RMSZ is the root-mean-square of all Z scores of the bond lengths (or angles).

Mol	Type	Chain	Res	Link	Bond lengths			Bond angles		
					Counts	RMSZ	# Z  > 2	Counts	RMSZ	# Z  > 2
9	SF4	B	303	2	0,12,12	-	-	-		
12	EPH	D	1306	-	43,43,48	1.45	8 (18%)	45,48,53	1.51	6 (13%)
11	F7A	C	1201	-	28,28,28	0.68	1 (3%)	39,39,39	1.00	4 (10%)
7	FES	B	302	2	0,4,4	-	-	-		
6	MLI	A	701	-	6,6,6	1.10	0	7,7,7	0.77	0
8	F3S	B	304	2	0,9,9	-	-	-		
10	HEM	C	1305	4,3	41,50,50	1.96	7 (17%)	45,82,82	1.67	5 (11%)
5	FAD	A	700	1	53,58,58	1.16	4 (7%)	68,89,89	1.45	11 (16%)

In the following table, the Chirals column lists the number of chiral outliers, the number of chiral centers analysed, the number of these observed in the model and the number defined in the Chemical Component Dictionary. Similar counts are reported in the Torsion and Rings columns. '-' means no outliers of that kind were identified.

Mol	Type	Chain	Res	Link	Chirals	Torsions	Rings
9	SF4	B	303	2	-	-	0/6/5/5
12	EPH	D	1306	-	1/1/4/14	29/47/47/52	-
11	F7A	C	1201	-	-	2/18/18/18	0/3/3/3
7	FES	B	302	2	-	-	0/1/1/1
6	MLI	A	701	-	-	2/4/4/4	-

*Continued on next page...*

Continued from previous page...

Mol	Type	Chain	Res	Link	Chirals	Torsions	Rings
8	F3S	B	304	2	-	-	0/3/3/3
10	HEM	C	1305	4,3	-	5/12/54/54	-
5	FAD	A	700	1	-	8/30/50/50	0/6/6/6

All (20) bond length outliers are listed below:

Mol	Chain	Res	Type	Atoms	Z	Observed(Å)	Ideal(Å)
10	C	1305	HEM	C3D-C2D	8.03	1.53	1.36
10	C	1305	HEM	C3C-C2C	-4.24	1.34	1.40
5	A	700	FAD	C4X-N5	4.03	1.38	1.30
5	A	700	FAD	C2A-N3A	3.94	1.38	1.32
12	D	1306	EPH	C13-C12	3.60	1.52	1.31
12	D	1306	EPH	O1-C3	3.57	1.44	1.34
12	D	1306	EPH	C29-C28	3.56	1.52	1.31
10	C	1305	HEM	C3C-CAC	3.51	1.55	1.47
12	D	1306	EPH	C25-C24	3.50	1.52	1.31
12	D	1306	EPH	O2-C4	3.17	1.42	1.33
12	D	1306	EPH	C15-C16	3.06	1.52	1.29
5	A	700	FAD	C10-N1	2.83	1.39	1.33
10	C	1305	HEM	CAB-C3B	2.74	1.54	1.47
10	C	1305	HEM	FE-ND	2.73	2.10	1.96
5	A	700	FAD	C2A-N1A	2.50	1.38	1.33
12	D	1306	EPH	O1-C2	-2.43	1.40	1.46
11	C	1201	F7A	C9-N1	-2.30	1.37	1.41
12	D	1306	EPH	O2-C1	-2.21	1.40	1.45
10	C	1305	HEM	CMB-C2B	2.18	1.55	1.50
10	C	1305	HEM	CAA-C2A	2.06	1.55	1.52

All (26) bond angle outliers are listed below:

Mol	Chain	Res	Type	Atoms	Z	Observed(°)	Ideal(°)
10	C	1305	HEM	C4D-ND-C1D	6.29	111.57	105.07
5	A	700	FAD	N3A-C2A-N1A	-5.83	119.57	128.68
12	D	1306	EPH	O1-C3-C5	4.69	121.61	111.50
12	D	1306	EPH	C2-O1-C3	-3.68	108.74	117.79
10	C	1305	HEM	C4C-CHD-C1D	3.61	127.32	122.56
5	A	700	FAD	C4-N3-C2	-3.20	119.73	125.64
11	C	1201	F7A	C15-O2-C11	3.09	126.02	118.80
5	A	700	FAD	C4X-C4-N3	2.86	120.44	113.19
5	A	700	FAD	C4'-C3'-C2'	-2.84	107.45	113.36
12	D	1306	EPH	O2-C1-C2	-2.77	100.37	108.43
10	C	1305	HEM	C1B-NB-C4B	2.73	107.89	105.07

Continued on next page...

*Continued from previous page...*

Mol	Chain	Res	Type	Atoms	Z	Observed(°)	Ideal(°)
12	D	1306	EPH	O1-C3-O3	-2.68	117.22	123.70
10	C	1305	HEM	C4B-CHC-C1C	2.62	126.01	122.56
5	A	700	FAD	O4-C4-C4X	-2.62	119.66	126.60
5	A	700	FAD	C4X-C10-N10	2.47	120.09	116.48
5	A	700	FAD	C4X-C10-N1	-2.43	119.09	124.73
5	A	700	FAD	C10-C4X-N5	-2.41	119.75	124.86
12	D	1306	EPH	C19-C18-C4	-2.38	104.98	113.62
11	C	1201	F7A	F2-C1-C2	-2.30	108.70	112.70
5	A	700	FAD	P-O3P-PA	-2.27	125.04	132.83
5	A	700	FAD	C9A-C5X-N5	-2.22	120.02	122.43
10	C	1305	HEM	CMA-C3A-C4A	-2.20	125.08	128.46
5	A	700	FAD	C10-N1-C2	2.17	121.24	116.90
11	C	1201	F7A	F3-C1-C2	-2.14	108.98	112.70
12	D	1306	EPH	C23-C24-C25	-2.11	108.56	124.73
11	C	1201	F7A	O1-C8-C3	-2.02	117.32	121.01

All (1) chirality outliers are listed below:

Mol	Chain	Res	Type	Atom
12	D	1306	EPH	C2

All (46) torsion outliers are listed below:

Mol	Chain	Res	Type	Atoms
5	A	700	FAD	N10-C1'-C2'-O2'
5	A	700	FAD	N10-C1'-C2'-C3'
5	A	700	FAD	C5'-O5'-P-O2P
10	C	1305	HEM	C2B-C3B-CAB-CBB
10	C	1305	HEM	C4B-C3B-CAB-CBB
12	D	1306	EPH	C28-C29-C30-C31
12	D	1306	EPH	C2-C37-O5-P1
12	D	1306	EPH	C37-O5-P1-O7
12	D	1306	EPH	C5-C3-O1-C2
12	D	1306	EPH	C38-O8-P1-O5
12	D	1306	EPH	C38-O8-P1-O6
12	D	1306	EPH	C38-O8-P1-O7
12	D	1306	EPH	C39-C38-O8-P1
12	D	1306	EPH	O8-C38-C39-N1
12	D	1306	EPH	O4-C4-O2-C1
12	D	1306	EPH	O3-C3-O1-C2
12	D	1306	EPH	C18-C4-O2-C1
12	D	1306	EPH	C4-C18-C19-C20

*Continued on next page...*

*Continued from previous page...*

Mol	Chain	Res	Type	Atoms
12	D	1306	EPH	C3-C5-C6-C7
12	D	1306	EPH	C27-C28-C29-C30
12	D	1306	EPH	C37-O5-P1-O8
12	D	1306	EPH	C7-C8-C9-C10
12	D	1306	EPH	C23-C24-C25-C26
12	D	1306	EPH	C20-C21-C22-C23
12	D	1306	EPH	C21-C22-C23-C24
10	C	1305	HEM	C3D-CAD-CBD-CGD
12	D	1306	EPH	C19-C18-C4-O2
5	A	700	FAD	PA-O3P-P-O1P
12	D	1306	EPH	C5-C6-C7-C8
5	A	700	FAD	PA-O3P-P-O5'
12	D	1306	EPH	C37-C2-O1-C3
5	A	700	FAD	C5'-O5'-P-O3P
5	A	700	FAD	C5'-O5'-P-O1P
12	D	1306	EPH	O2-C1-C2-C37
10	C	1305	HEM	CAA-CBA-CGA-O1A
12	D	1306	EPH	C19-C18-C4-O4
10	C	1305	HEM	CAA-CBA-CGA-O2A
11	C	1201	F7A	C4-C3-C8-O1
12	D	1306	EPH	C12-C13-C14-C15
12	D	1306	EPH	C13-C14-C15-C16
6	A	701	MLI	C3-C1-C2-O7
11	C	1201	F7A	C4-C3-C8-N1
6	A	701	MLI	C3-C1-C2-O6
12	D	1306	EPH	C10-C11-C12-C13
12	D	1306	EPH	O2-C1-C2-O1
5	A	700	FAD	O4B-C4B-C5B-O5B

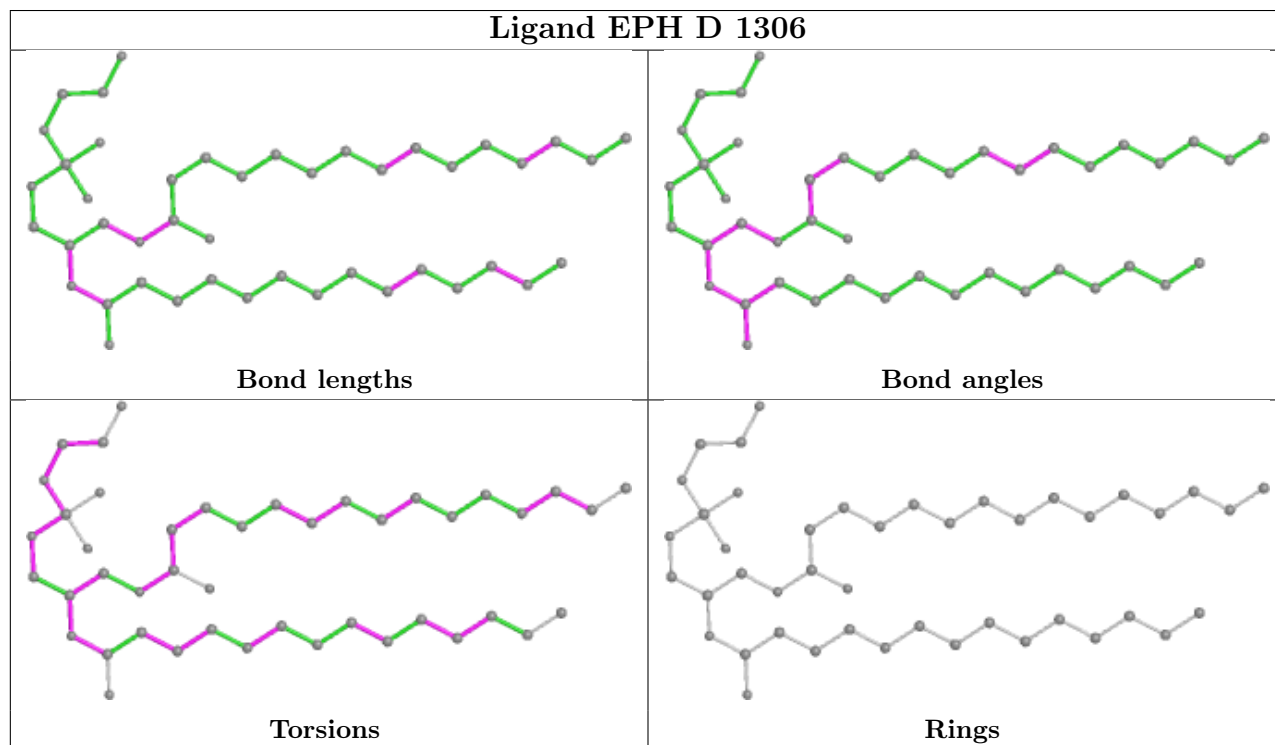
There are no ring outliers.

5 monomers are involved in 39 short contacts:

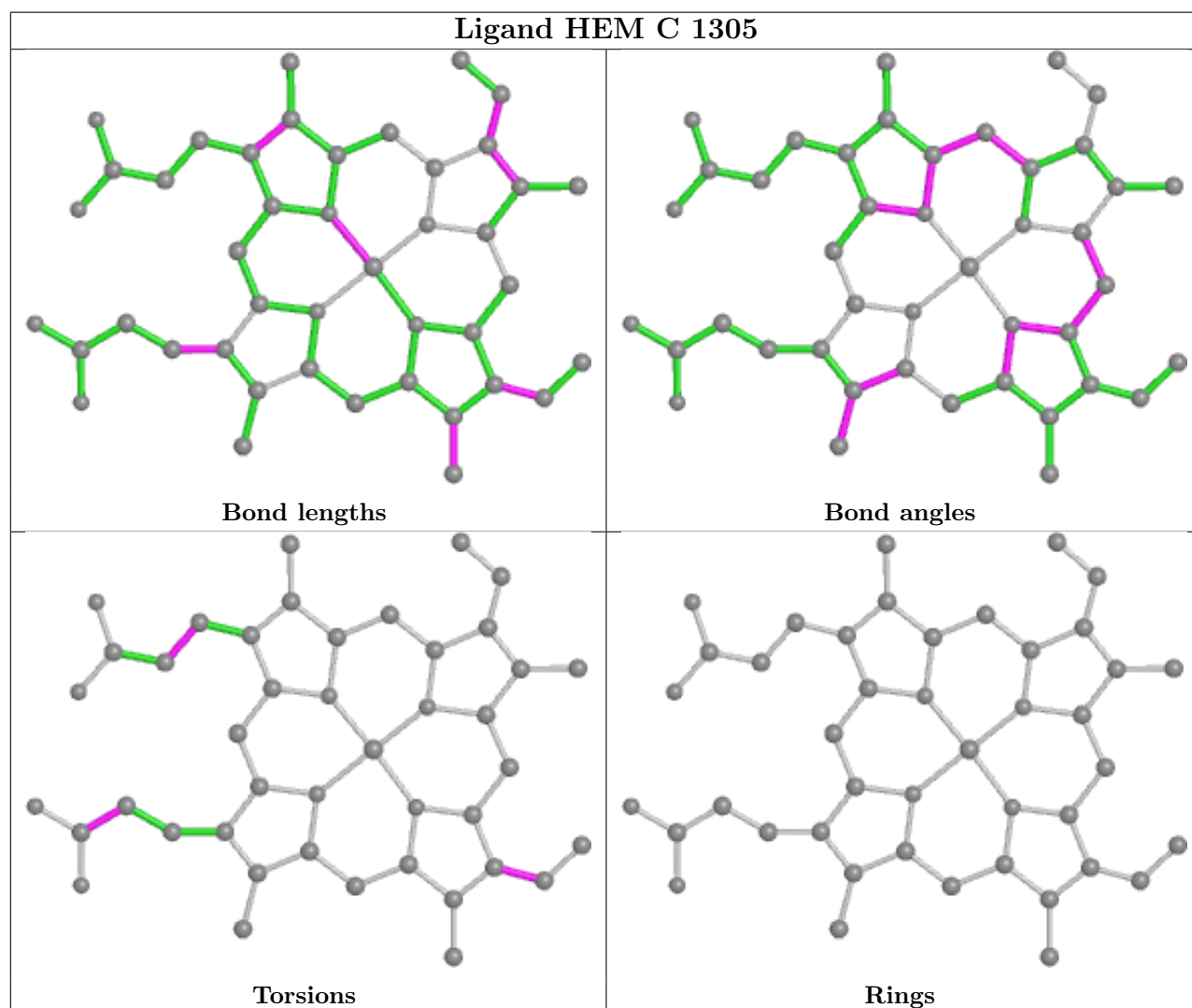
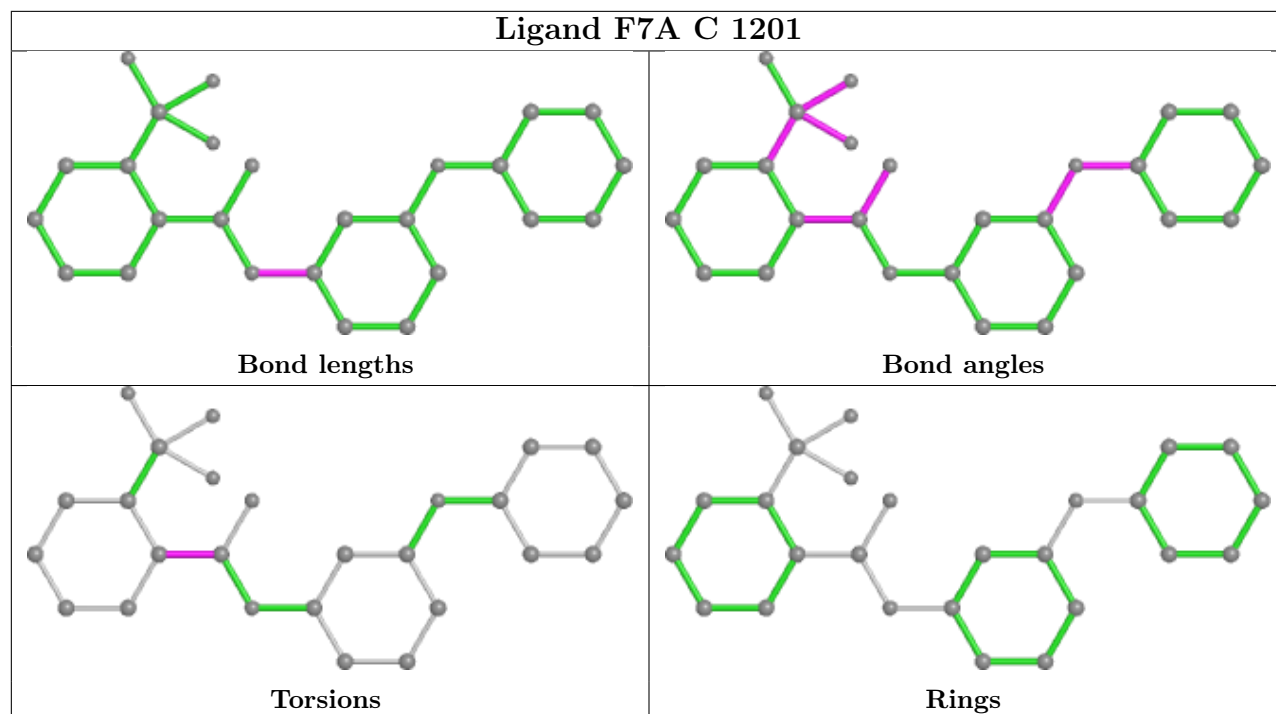
Mol	Chain	Res	Type	Clashes	Symm-Clashes
12	D	1306	EPH	24	0
11	C	1201	F7A	4	0
8	B	304	F3S	2	0
10	C	1305	HEM	2	0
5	A	700	FAD	7	0

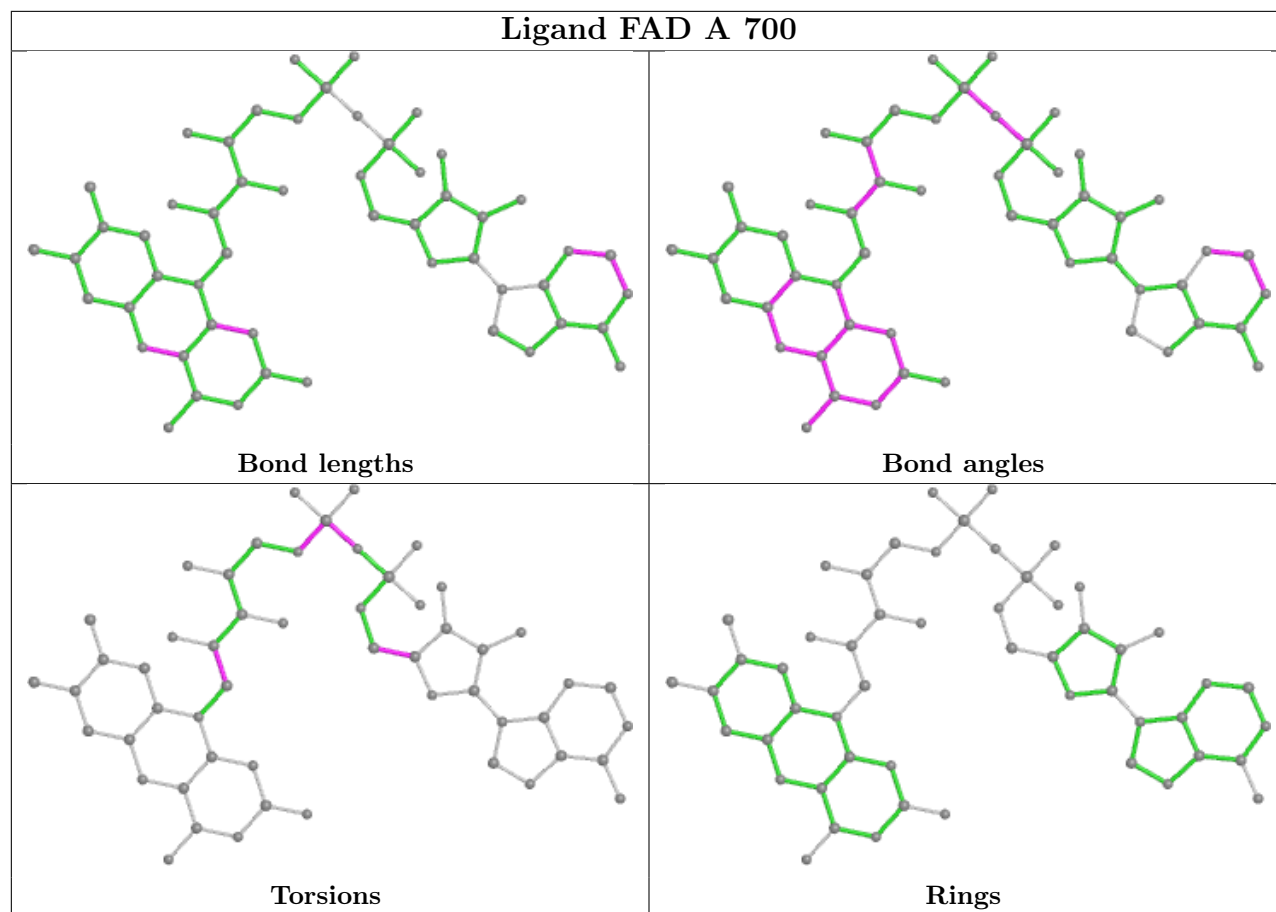
The following is a two-dimensional graphical depiction of Mogul quality analysis of bond lengths, bond angles, torsion angles, and ring geometry for all instances of the Ligand of Interest. In addition, ligands with molecular weight > 250 and outliers as shown on the validation Tables will

also be included. For torsion angles, if less than 5% of the Mogul distribution of torsion angles is within 10 degrees of the torsion angle in question, then that torsion angle is considered an outlier. Any bond that is central to one or more torsion angles identified as an outlier by Mogul will be highlighted in the graph. For rings, the root-mean-square deviation (RMSD) between the ring in question and similar rings identified by Mogul is calculated over all ring torsion angles. If the average RMSD is greater than 60 degrees and the minimal RMSD between the ring in question and any Mogul-identified rings is also greater than 60 degrees, then that ring is considered an outlier. The outliers are highlighted in purple. The color gray indicates Mogul did not find sufficient equivalents in the CSD to analyse the geometry.









## 5.7 Other polymers [i](#)

There are no such residues in this entry.

## 5.8 Polymer linkage issues [i](#)

There are no chain breaks in this entry.

## 6 Fit of model and data [i](#)

### 6.1 Protein, DNA and RNA chains [i](#)

In the following table, the column labelled ‘#RSRZ > 2’ contains the number (and percentage) of RSRZ outliers, followed by percent RSRZ outliers for the chain as percentile scores relative to all X-ray entries and entries of similar resolution. The OWAB column contains the minimum, median, 95<sup>th</sup> percentile and maximum values of the occupancy-weighted average B-factor per residue. The column labelled ‘Q < 0.9’ lists the number of (and percentage) of residues with an average occupancy less than 0.9.

Mol	Chain	Analysed	<RSRZ>	#RSRZ>2	OWAB(Å <sup>2</sup> )	Q<0.9
1	A	613/622 (98%)	0.00	11 (1%) 68 40	47, 71, 114, 144	0
2	B	239/252 (94%)	-0.14	2 (0%) 86 65	47, 63, 99, 125	0
3	C	138/140 (98%)	-0.12	2 (1%) 75 49	51, 74, 124, 144	0
4	D	102/103 (99%)	-0.34	2 (1%) 65 36	51, 73, 99, 114	0
All	All	1092/1117 (97%)	-0.08	17 (1%) 72 44	47, 70, 111, 144	0

All (17) RSRZ outliers are listed below:

Mol	Chain	Res	Type	RSRZ
4	D	35	SER	4.5
3	C	79	SER	3.6
1	A	317	PRO	2.8
1	A	288	TYR	2.8
1	A	572	GLN	2.7
2	B	94	ASP	2.6
1	A	569	GLN	2.6
1	A	155	GLY	2.4
1	A	323	TYR	2.4
2	B	24	THR	2.3
3	C	80	LEU	2.1
1	A	398	GLU	2.1
1	A	356	GLU	2.1
1	A	436	GLY	2.1
1	A	216	GLY	2.0
4	D	134	TRP	2.0
1	A	326	LEU	2.0

### 6.2 Non-standard residues in protein, DNA, RNA chains [i](#)

There are no non-standard protein/DNA/RNA residues in this entry.

### 6.3 Carbohydrates

There are no monosaccharides in this entry.

### 6.4 Ligands

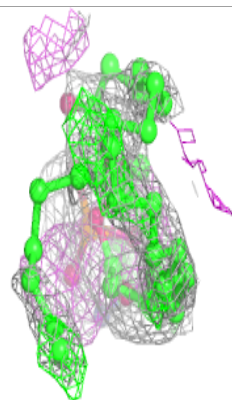
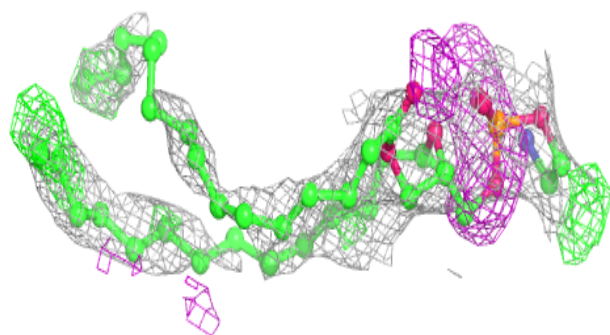
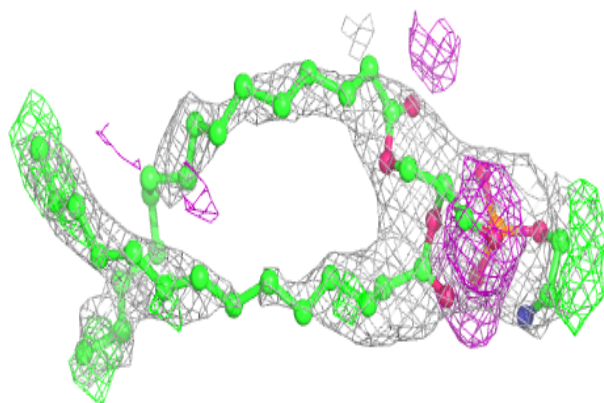
In the following table, the Atoms column lists the number of modelled atoms in the group and the number defined in the chemical component dictionary. The B-factors column lists the minimum, median, 95<sup>th</sup> percentile and maximum values of B factors of atoms in the group. The column labelled 'Q< 0.9' lists the number of atoms with occupancy less than 0.9.

Mol	Type	Chain	Res	Atoms	RSCC	RSR	B-factors( $\text{\AA}^2$ )	Q<0.9
12	EPH	D	1306	44/49	0.70	0.56	134,136,140,140	0
11	F7A	C	1201	26/26	0.90	0.33	67,71,78,78	0
6	MLI	A	701	7/7	0.92	0.29	102,102,102,102	0
5	FAD	A	700	53/53	0.95	0.32	50,52,55,55	0
10	HEM	C	1305	43/43	0.97	0.22	56,57,59,60	0
7	FES	B	302	4/4	0.99	0.19	53,53,54,54	0
8	F3S	B	304	7/7	0.99	0.13	50,51,52,52	0
9	SF4	B	303	8/8	0.99	0.14	41,42,43,43	0

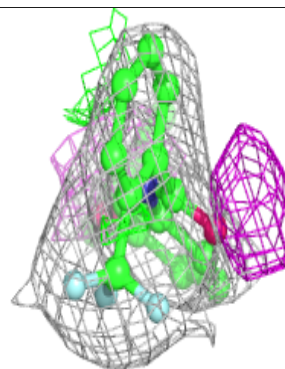
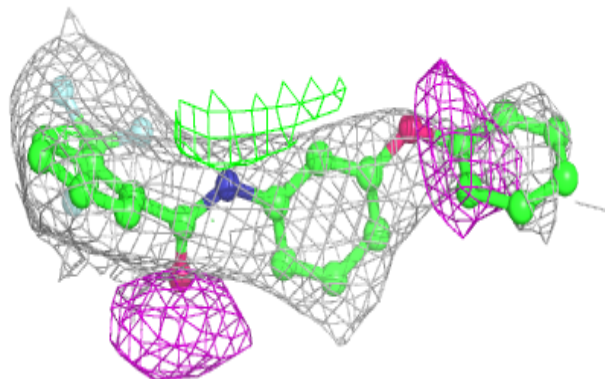
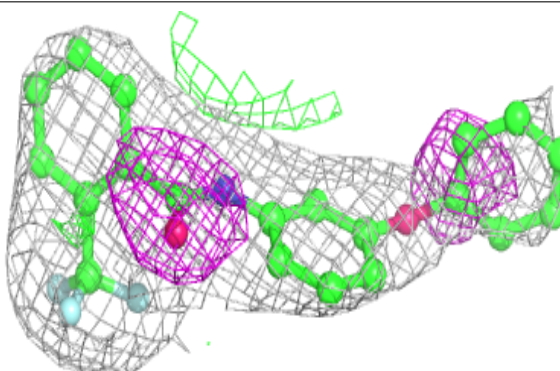
The following is a graphical depiction of the model fit to experimental electron density of all instances of the Ligand of Interest. In addition, ligands with molecular weight > 250 and outliers as shown on the geometry validation Tables will also be included. Each fit is shown from different orientation to approximate a three-dimensional view.

**Electron density around EPH D 1306:**

$2mF_o-DF_c$  (at 0.7 rmsd) in gray  
 $mF_o-DF_c$  (at 3 rmsd) in purple (negative)  
and green (positive)

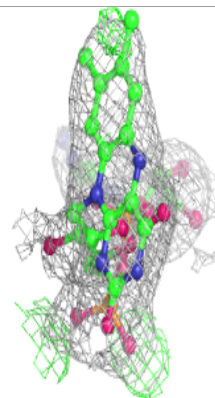
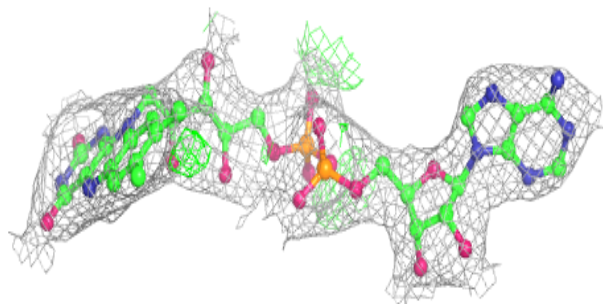
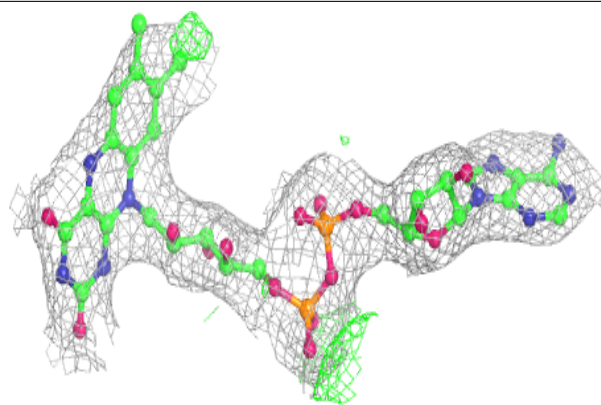
**Electron density around F7A C 1201:**

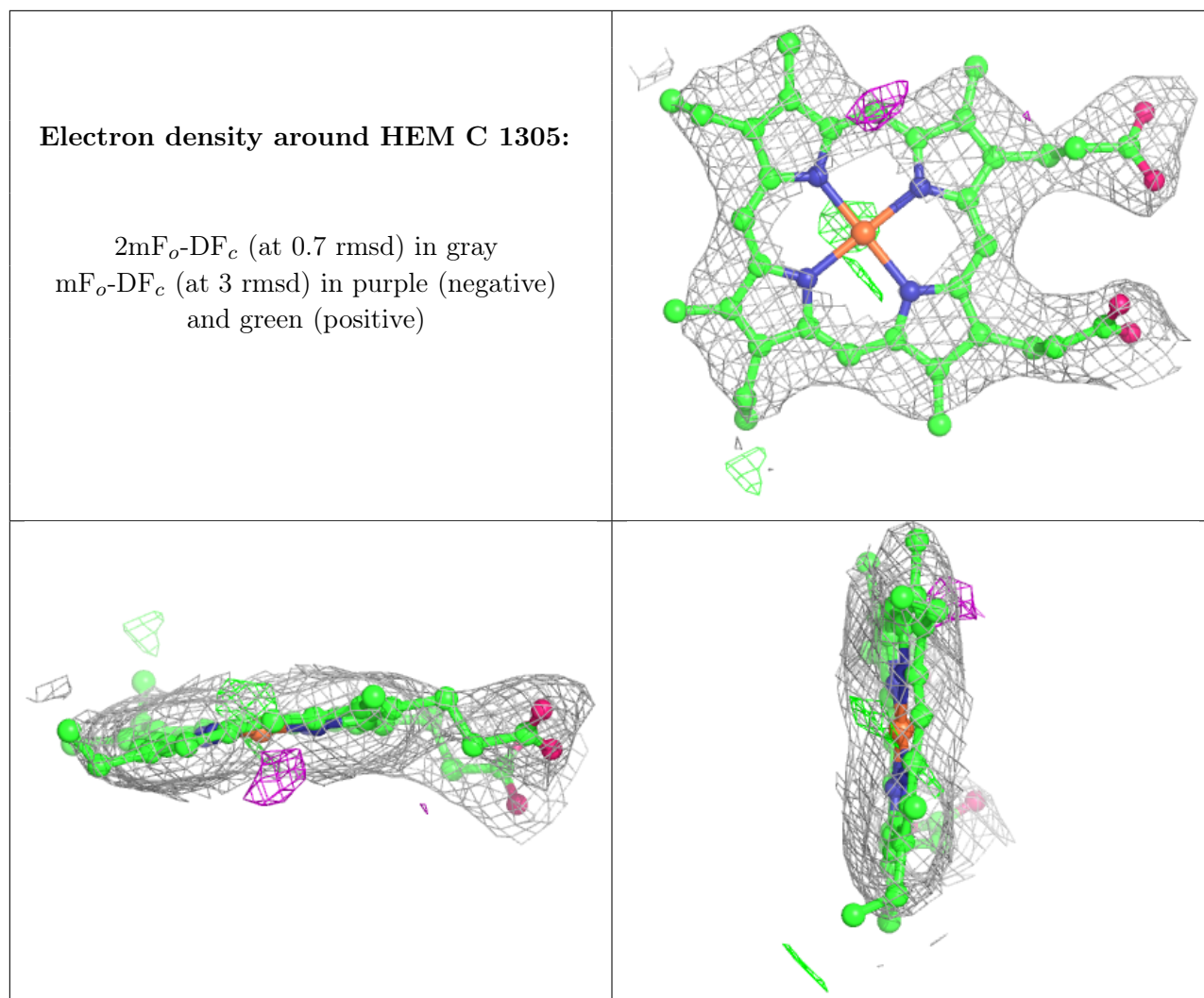
$2mF_o-DF_c$  (at 0.7 rmsd) in gray  
 $mF_o-DF_c$  (at 3 rmsd) in purple (negative)  
and green (positive)



**Electron density around FAD A 700:**

$2mF_o-DF_c$  (at 0.7 rmsd) in gray  
 $mF_o-DF_c$  (at 3 rmsd) in purple (negative)  
and green (positive)





## 6.5 Other polymers [i](#)

There are no such residues in this entry.