



# Full wwPDB X-ray Structure Validation Report ⓘ

Oct 22, 2023 – 11:58 AM EDT

PDB ID : 3AE4  
Title : Crystal structure of porcine heart mitochondrial complex II bound with 2-Iodo-N-methyl-benzamide  
Authors : Harada, S.; Sasaki, T.; Shindo, M.; Kido, Y.; Inaoka, D.K.; Omori, J.; Osanai, A.; Sakamoto, K.; Mao, J.; Matsuoka, S.; Inoue, M.; Honma, T.; Tanaka, A.; Kita, K.  
Deposited on : 2010-02-04  
Resolution : 2.91 Å(reported)

This is a Full wwPDB X-ray Structure Validation Report for a publicly released PDB entry.

We welcome your comments at [validation@mail.wwpdb.org](mailto:validation@mail.wwpdb.org)

A user guide is available at

<https://www.wwpdb.org/validation/2017/XrayValidationReportHelp>

with specific help available everywhere you see the ⓘ symbol.

The types of validation reports are described at

<http://www.wwpdb.org/validation/2017/FAQs#types>.

---

The following versions of software and data (see [references](#) ①) were used in the production of this report:

MolProbity : 4.02b-467  
Mogul : 1.8.5 (274361), CSD as541be (2020)  
Xtrriage (Phenix) : 1.13  
EDS : 2.36  
buster-report : 1.1.7 (2018)  
Percentile statistics : 20191225.v01 (using entries in the PDB archive December 25th 2019)  
Refmac : 5.8.0158  
CCP4 : 7.0.044 (Gargrove)  
Ideal geometry (proteins) : Engh & Huber (2001)  
Ideal geometry (DNA, RNA) : Parkinson et al. (1996)  
Validation Pipeline (wwPDB-VP) : 2.36

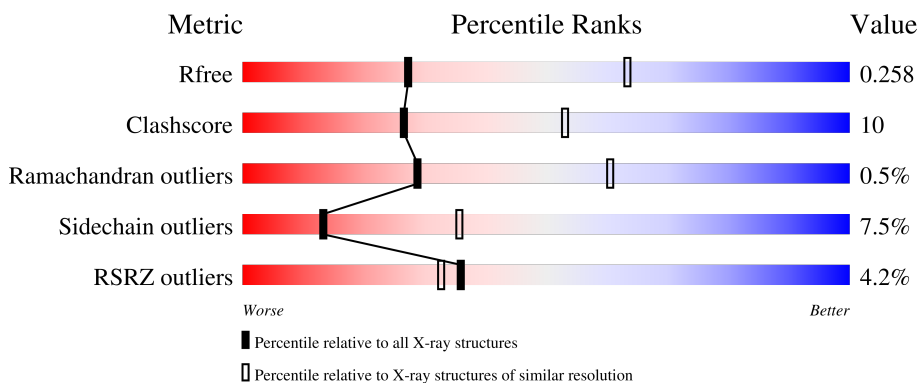
# 1 Overall quality at a glance i

The following experimental techniques were used to determine the structure:

*X-RAY DIFFRACTION*

The reported resolution of this entry is 2.91 Å.

Percentile scores (ranging between 0-100) for global validation metrics of the entry are shown in the following graphic. The table shows the number of entries on which the scores are based.



Metric	Whole archive (#Entries)	Similar resolution (#Entries, resolution range(Å))
$R_{free}$	130704	2307 (2.94-2.90)
Clashscore	141614	2531 (2.94-2.90)
Ramachandran outliers	138981	2462 (2.94-2.90)
Sidechain outliers	138945	2464 (2.94-2.90)
RSRZ outliers	127900	2248 (2.94-2.90)

The table below summarises the geometric issues observed across the polymeric chains and their fit to the electron density. The red, orange, yellow and green segments of the lower bar indicate the fraction of residues that contain outliers for  $\geq 3$ , 2, 1 and 0 types of geometric quality criteria respectively. A grey segment represents the fraction of residues that are not modelled. The numeric value for each fraction is indicated below the corresponding segment, with a dot representing fractions  $\leq 5\%$ . The upper red bar (where present) indicates the fraction of residues that have poor fit to the electron density. The numeric value is given above the bar.

Mol	Chain	Length	Quality of chain
1	A	622	<div style="display: flex; align-items: center;"> <div style="width: 3%; height: 10px; background-color: red; margin-right: 5px;"></div> <div style="width: 74%; height: 10px; background-color: green; margin-right: 5px;"></div> <div style="width: 21%; height: 10px; background-color: yellow; margin-right: 5px;"></div> <div style="width: 5%; height: 10px; background-color: orange; margin-right: 5px;"></div> <div style="width: 5%; height: 10px; background-color: grey;"></div> </div> <p style="font-size: small; margin-top: 5px;">3% 74% 21% 5%</p>
2	B	252	<div style="display: flex; align-items: center;"> <div style="width: 5%; height: 10px; background-color: red; margin-right: 5px;"></div> <div style="width: 69%; height: 10px; background-color: green; margin-right: 5px;"></div> <div style="width: 23%; height: 10px; background-color: yellow; margin-right: 5px;"></div> <div style="width: 5%; height: 10px; background-color: orange; margin-right: 5px;"></div> <div style="width: 5%; height: 10px; background-color: grey;"></div> </div> <p style="font-size: small; margin-top: 5px;">5% 69% 23% 5%</p>
3	C	140	<div style="display: flex; align-items: center;"> <div style="width: 9%; height: 10px; background-color: red; margin-right: 5px;"></div> <div style="width: 81%; height: 10px; background-color: green; margin-right: 5px;"></div> <div style="width: 15%; height: 10px; background-color: yellow; margin-right: 5px;"></div> <div style="width: 5%; height: 10px; background-color: orange; margin-right: 5px;"></div> <div style="width: 5%; height: 10px; background-color: grey;"></div> </div> <p style="font-size: small; margin-top: 5px;">9% 81% 15% 5%</p>
4	D	103	<div style="display: flex; align-items: center;"> <div style="width: 5%; height: 10px; background-color: red; margin-right: 5px;"></div> <div style="width: 87%; height: 10px; background-color: green; margin-right: 5px;"></div> <div style="width: 12%; height: 10px; background-color: yellow; margin-right: 5px;"></div> <div style="width: 5%; height: 10px; background-color: orange; margin-right: 5px;"></div> <div style="width: 5%; height: 10px; background-color: grey;"></div> </div> <p style="font-size: small; margin-top: 5px;">5% 87% 12% 5%</p>

The following table lists non-polymeric compounds, carbohydrate monomers and non-standard

residues in protein, DNA, RNA chains that are outliers for geometric or electron-density-fit criteria:

Mol	Type	Chain	Res	Chirality	Geometry	Clashes	Electron density
11	EPH	D	1306	-	-	-	X

## 2 Entry composition

There are 12 unique types of molecules in this entry. The entry contains 8657 atoms, of which 0 are hydrogens and 0 are deuteriums.

In the tables below, the ZeroOcc column contains the number of atoms modelled with zero occupancy, the AltConf column contains the number of residues with at least one atom in alternate conformation and the Trace column contains the number of residues modelled with at most 2 atoms.

- Molecule 1 is a protein called Succinate dehydrogenase [ubiquinone] flavoprotein subunit, mitochondrial.

Mol	Chain	Residues	Atoms					ZeroOcc	AltConf	Trace
			Total	C	N	O	S			
1	A	613	4729	2954	848	895	32	0	0	0

- Molecule 2 is a protein called Succinate dehydrogenase [ubiquinone] iron-sulfur subunit, mitochondrial.

Mol	Chain	Residues	Atoms					ZeroOcc	AltConf	Trace
			Total	C	N	O	S			
2	B	239	1922	1214	326	360	22	0	0	0

- Molecule 3 is a protein called Succinate dehydrogenase cytochrome b560 subunit, mitochondrial.

Mol	Chain	Residues	Atoms					ZeroOcc	AltConf	Trace
			Total	C	N	O	S			
3	C	138	1064	695	179	183	7	0	0	0

- Molecule 4 is a protein called Succinate dehydrogenase [ubiquinone] cytochrome b small subunit, mitochondrial.

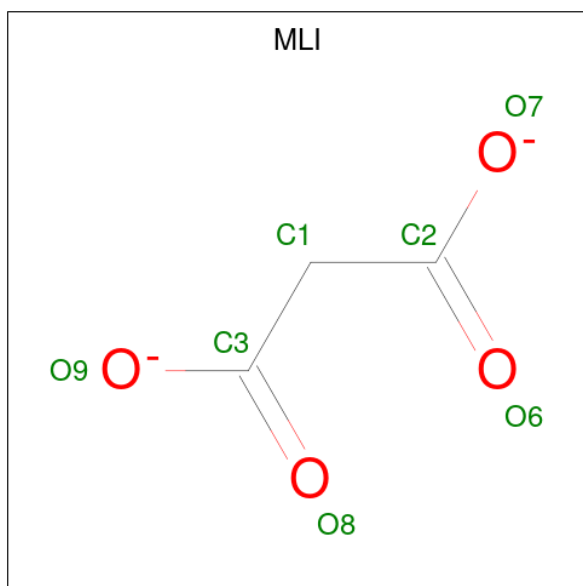
Mol	Chain	Residues	Atoms					ZeroOcc	AltConf	Trace
			Total	C	N	O	S			
4	D	102	765	499	128	133	5	0	0	0

- Molecule 5 is FLAVIN-ADENINE DINUCLEOTIDE (three-letter code: FAD) (formula:  $C_{27}H_{33}N_9O_{15}P_2$ ).



Mol	Chain	Residues	Atoms					ZeroOcc	AltConf
			Total	C	N	O	P		
5	A	1	53	27	9	15	2	0	0

- Molecule 6 is MALONATE ION (three-letter code: MLI) (formula:  $C_3H_2O_4$ ).



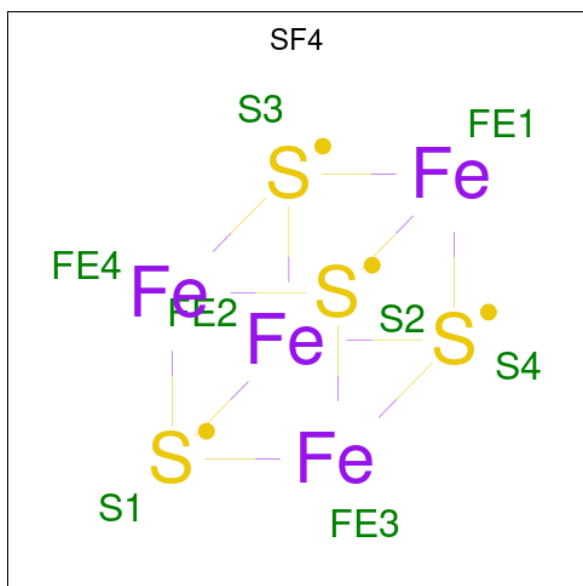
Mol	Chain	Residues	Atoms		ZeroOcc	AltConf
			Total	O		
6	A	1	7	4	0	0

- Molecule 7 is FE2/S2 (INORGANIC) CLUSTER (three-letter code: FES) (formula:  $Fe_2S_2$ ).



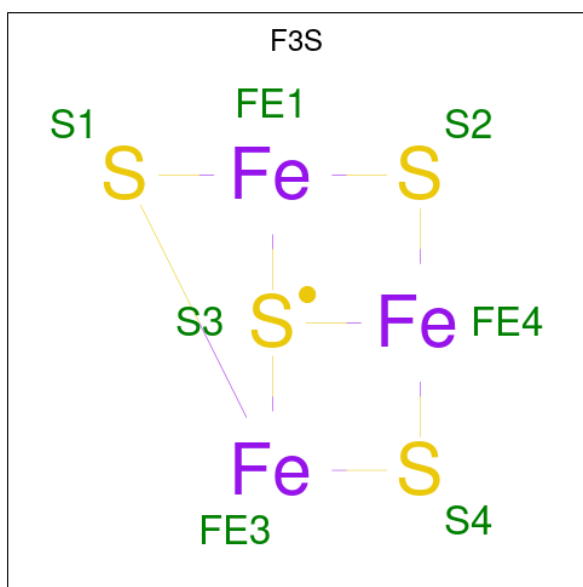
Mol	Chain	Residues	Atoms			ZeroOcc	AltConf
			Total	Fe	S		
7	B	1	4	2	2	0	0

- Molecule 8 is IRON/SULFUR CLUSTER (three-letter code: SF4) (formula: Fe<sub>4</sub>S<sub>4</sub>).



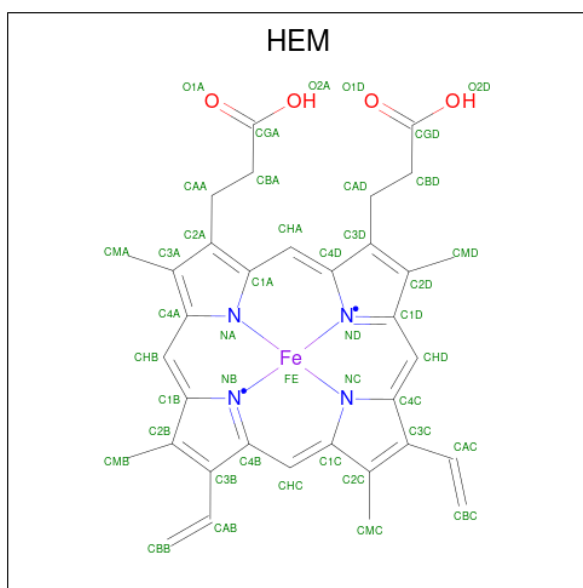
Mol	Chain	Residues	Atoms			ZeroOcc	AltConf
			Total	Fe	S		
8	B	1	8	4	4	0	0

- Molecule 9 is FE3-S4 CLUSTER (three-letter code: F3S) (formula: Fe<sub>3</sub>S<sub>4</sub>).



Mol	Chain	Residues	Atoms				ZeroOcc	AltConf
9	B	1	Total	Fe	S			
			7	3	4	0	0	

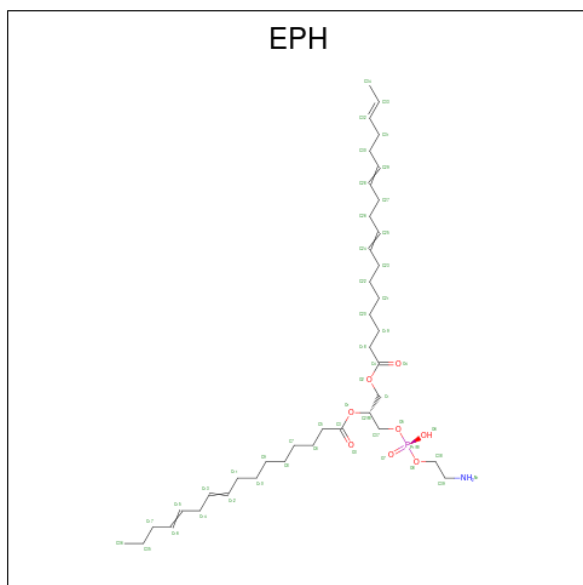
- Molecule 10 is PROTOPORPHYRIN IX CONTAINING FE (three-letter code: HEM) (formula:  $C_{34}H_{32}FeN_4O_4$ ).



Mol	Chain	Residues	Atoms				ZeroOcc	AltConf	
10	C	1	Total	C	Fe	N	O		
			43	34	1	4	4	0	0

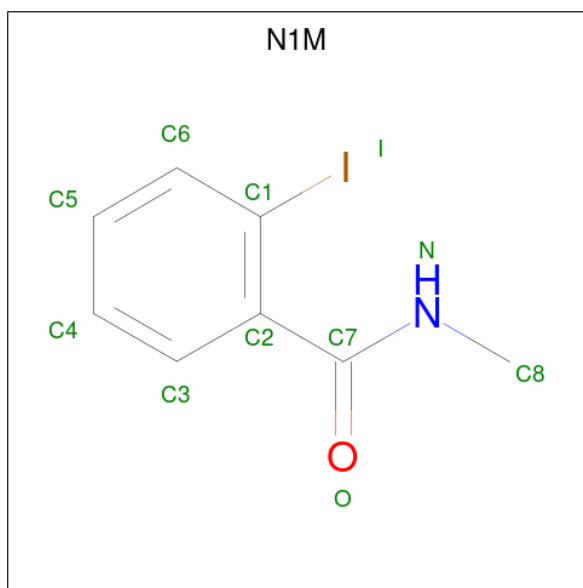
- Molecule 11 is L-ALPHA-PHOSPHATIDYL-BETA-OLEOYL-GAMMA-PALMITOYL-PHOSPHATIDYLETHANOLAMINE (three-letter code: EPH) (formula:  $C_{39}H_{68}NO_8P$ ).





Mol	Chain	Residues	Atoms					ZeroOcc	AltConf
			Total	C	N	O	P		
11	D	1	44	34	1	8	1	0	0

- Molecule 12 is 2-iodo-N-methylbenzamide (three-letter code: N1M) (formula: C<sub>8</sub>H<sub>8</sub>INO).

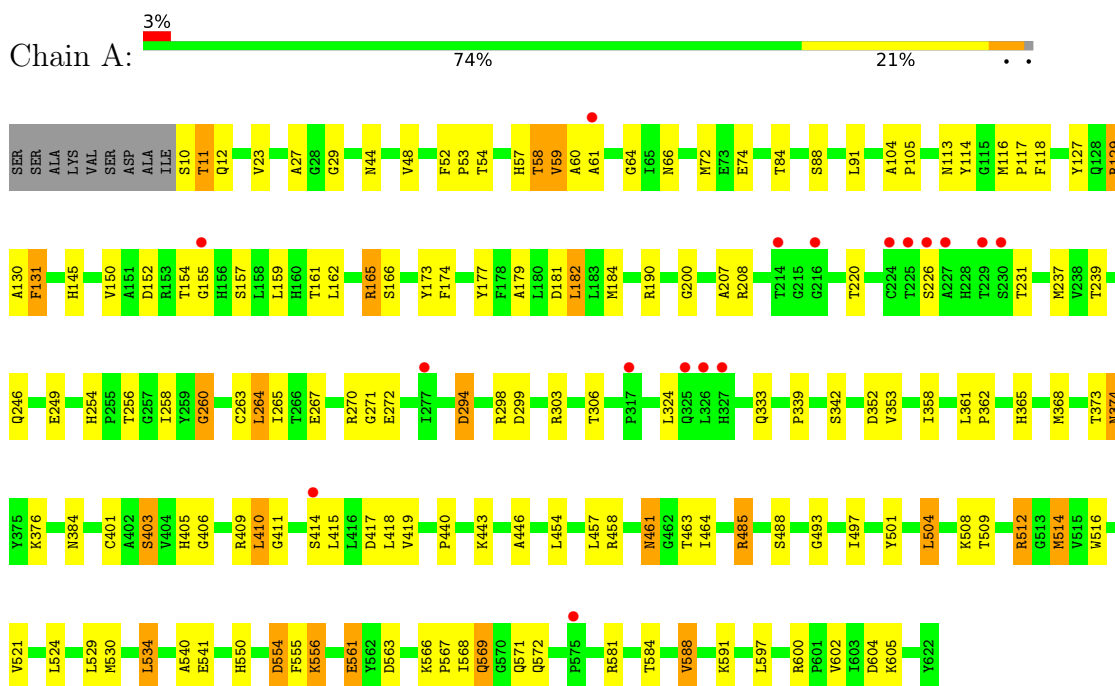


Mol	Chain	Residues	Atoms					ZeroOcc	AltConf
			Total	C	I	N	O		
12	D	1	11	8	1	1	1	0	0

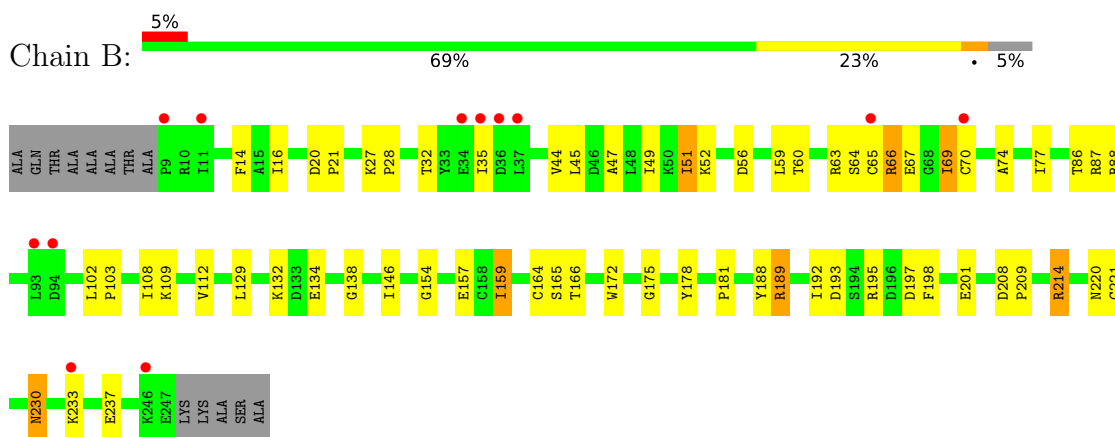
### 3 Residue-property plots [i](#)

These plots are drawn for all protein, RNA, DNA and oligosaccharide chains in the entry. The first graphic for a chain summarises the proportions of the various outlier classes displayed in the second graphic. The second graphic shows the sequence view annotated by issues in geometry and electron density. Residues are color-coded according to the number of geometric quality criteria for which they contain at least one outlier: green = 0, yellow = 1, orange = 2 and red = 3 or more. A red dot above a residue indicates a poor fit to the electron density ( $RSRZ > 2$ ). Stretches of 2 or more consecutive residues without any outlier are shown as a green connector. Residues present in the sample, but not in the model, are shown in grey.


- Molecule 1: Succinate dehydrogenase [ubiquinone] flavoprotein subunit, mitochondrial



- Molecule 2: Succinate dehydrogenase [ubiquinone] iron-sulfur subunit, mitochondrial




- Molecule 3: Succinate dehydrogenase cytochrome b560 subunit, mitochondrial

Chain C:  9% 81% 15% ..



- Molecule 4: Succinate dehydrogenase [ubiquinone] cytochrome b small subunit, mitochondrial

Chain D:  5% 87% 12% ..



## 4 Data and refinement statistics

Property	Value	Source
Space group	P 21 21 21	Depositor
Cell constants a, b, c, $\alpha$ , $\beta$ , $\gamma$	71.56Å 84.22Å 294.22Å 90.00° 90.00° 90.00°	Depositor
Resolution (Å)	48.24 – 2.91 48.24 – 2.91	Depositor EDS
% Data completeness (in resolution range)	85.0 (48.24-2.91) 84.9 (48.24-2.91)	Depositor EDS
$R_{merge}$	0.09	Depositor
$R_{sym}$	(Not available)	Depositor
$\langle I/\sigma(I) \rangle$ <sup>1</sup>	3.19 (at 2.91Å)	Xtrriage
Refinement program	REFMAC	Depositor
R, $R_{free}$	0.222 , 0.257 0.220 , 0.258	Depositor DCC
$R_{free}$ test set	1682 reflections (4.95%)	wwPDB-VP
Wilson B-factor (Å <sup>2</sup> )	67.2	Xtrriage
Anisotropy	0.857	Xtrriage
Bulk solvent $k_{sol}$ (e/Å <sup>3</sup> ), $B_{sol}$ (Å <sup>2</sup> )	0.31 , 45.6	EDS
L-test for twinning <sup>2</sup>	$\langle  L  \rangle = 0.49$ , $\langle L^2 \rangle = 0.32$	Xtrriage
Estimated twinning fraction	No twinning to report.	Xtrriage
$F_o, F_c$ correlation	0.93	EDS
Total number of atoms	8657	wwPDB-VP
Average B, all atoms (Å <sup>2</sup> )	78.0	wwPDB-VP

Xtrriage's analysis on translational NCS is as follows: *The largest off-origin peak in the Patterson function is 3.52% of the height of the origin peak. No significant pseudotranslation is detected.*

<sup>1</sup>Intensities estimated from amplitudes.

<sup>2</sup>Theoretical values of  $\langle |L| \rangle$ ,  $\langle L^2 \rangle$  for acentric reflections are 0.5, 0.333 respectively for untwinned datasets, and 0.375, 0.2 for perfectly twinned datasets.

## 5 Model quality [i](#)

### 5.1 Standard geometry [i](#)

Bond lengths and bond angles in the following residue types are not validated in this section: FAD, FES, F3S, MLI, EPH, SF4, N1M, HEM

The Z score for a bond length (or angle) is the number of standard deviations the observed value is removed from the expected value. A bond length (or angle) with  $|Z| > 5$  is considered an outlier worth inspection. RMSZ is the root-mean-square of all Z scores of the bond lengths (or angles).

Mol	Chain	Bond lengths		Bond angles	
		RMSZ	# Z  >5	RMSZ	# Z  >5
1	A	0.36	0/4828	0.55	1/6531 (0.0%)
2	B	0.37	0/1964	0.54	0/2648
3	C	0.36	0/1091	0.49	0/1483
4	D	0.35	0/784	0.50	0/1066
All	All	0.36	0/8667	0.54	1/11728 (0.0%)

There are no bond length outliers.

All (1) bond angle outliers are listed below:

Mol	Chain	Res	Type	Atoms	Z	Observed(°)	Ideal(°)
1	A	454	LEU	CA-CB-CG	5.32	127.54	115.30

There are no chirality outliers.

There are no planarity outliers.

### 5.2 Too-close contacts [i](#)

In the following table, the Non-H and H(model) columns list the number of non-hydrogen atoms and hydrogen atoms in the chain respectively. The H(added) column lists the number of hydrogen atoms added and optimized by MolProbity. The Clashes column lists the number of clashes within the asymmetric unit, whereas Symm-Clashes lists symmetry-related clashes.

Mol	Chain	Non-H	H(model)	H(added)	Clashes	Symm-Clashes
1	A	4729	0	4618	113	0
2	B	1922	0	1900	44	0
3	C	1064	0	1104	15	0
4	D	765	0	773	7	0
5	A	53	0	31	16	0
6	A	7	0	2	1	0

*Continued on next page...*

*Continued from previous page...*

Mol	Chain	Non-H	H(model)	H(added)	Clashes	Symm-Clashes
7	B	4	0	0	0	0
8	B	8	0	0	0	0
9	B	7	0	0	0	0
10	C	43	0	30	3	0
11	D	44	0	53	2	0
12	D	11	0	8	0	0
All	All	8657	0	8519	175	0

The all-atom clashscore is defined as the number of clashes found per 1000 atoms (including hydrogen atoms). The all-atom clashscore for this structure is 10.

All (175) close contacts within the same asymmetric unit are listed below, sorted by their clash magnitude.

Atom-1	Atom-2	Interatomic distance (Å)	Clash overlap (Å)
1:A:57:HIS:NE2	5:A:700:FAD:HM82	1.38	1.34
2:B:102:LEU:HB3	2:B:166:THR:HG21	1.34	1.08
1:A:57:HIS:CE1	5:A:700:FAD:HM82	1.91	1.06
1:A:509:THR:HG23	1:A:512:ARG:HH12	1.30	0.97
1:A:61:ALA:HB3	1:A:155:GLY:HA3	1.49	0.93
1:A:57:HIS:NE2	5:A:700:FAD:HM81	1.86	0.91
1:A:150:VAL:H	1:A:154:THR:HG22	1.35	0.90
1:A:59:VAL:HG23	1:A:159:LEU:HD23	1.61	0.82
3:C:52:LEU:HB3	10:C:1305:HEM:HAC	1.62	0.80
1:A:60:ALA:HB1	5:A:700:FAD:HM72	1.63	0.79
1:A:179:ALA:N	5:A:700:FAD:N1A	2.31	0.77
1:A:254:HIS:HD2	1:A:256:THR:H	1.33	0.76
1:A:415:LEU:HG	5:A:700:FAD:C2	2.15	0.75
1:A:353:VAL:HG12	1:A:358:ILE:HD11	1.70	0.73
1:A:29:GLY:H	1:A:58:THR:HG21	1.52	0.71
1:A:373:THR:HG22	1:A:374:ASN:O	1.89	0.71
2:B:27:LYS:HB3	2:B:28:PRO:CD	2.21	0.70
4:D:72:LEU:O	4:D:76:LEU:HB2	1.91	0.69
1:A:361:LEU:HD12	1:A:362:PRO:HD2	1.73	0.69
1:A:418:LEU:HD11	5:A:700:FAD:H4'	1.75	0.68
1:A:254:HIS:CD2	1:A:256:THR:H	2.12	0.68
1:A:561:GLU:OE2	1:A:581:ARG:HD3	1.94	0.67
2:B:129:LEU:HD11	2:B:195:ARG:HB2	1.75	0.67
1:A:246:GLN:NE2	1:A:600:ARG:HE	1.93	0.67
1:A:54:THR:O	1:A:59:VAL:HG21	1.94	0.67
1:A:504:LEU:HD21	1:A:530:MET:HG3	1.76	0.66
3:C:29:HIS:HD2	3:C:30:ILE:HG13	1.60	0.66

*Continued on next page...*

*Continued from previous page...*

Atom-1	Atom-2	Interatomic distance (Å)	Clash overlap (Å)
1:A:405:HIS:ND1	1:A:409:ARG:HG3	2.10	0.66
2:B:35:ILE:HD11	2:B:51:ILE:HG22	1.78	0.65
3:C:46:ARG:HE	10:C:1305:HEM:CGD	2.10	0.65
1:A:258:ILE:HD11	1:A:265:ILE:HG13	1.80	0.63
1:A:265:ILE:HD12	1:A:358:ILE:HG21	1.81	0.63
1:A:246:GLN:HA	1:A:584:THR:O	1.98	0.62
2:B:166:THR:O	2:B:166:THR:HG22	1.99	0.62
1:A:61:ALA:HA	5:A:700:FAD:N5	2.15	0.61
1:A:239:THR:HG23	1:A:588:VAL:HG13	1.82	0.61
1:A:150:VAL:N	1:A:154:THR:HG22	2.12	0.61
1:A:563:ASP:H	1:A:571:GLN:NE2	1.99	0.61
1:A:264:LEU:HD13	1:A:365:HIS:CE1	2.36	0.60
1:A:258:ILE:HG22	1:A:260:GLY:H	1.67	0.60
1:A:116:MET:HA	1:A:161:THR:HG21	1.84	0.59
1:A:181:ASP:HA	1:A:237:MET:HG2	1.83	0.59
1:A:166:SER:HB2	1:A:173:TYR:OH	2.03	0.58
1:A:563:ASP:H	1:A:571:GLN:HE22	1.52	0.58
2:B:102:LEU:CB	2:B:166:THR:HG21	2.22	0.57
1:A:84:THR:HA	1:A:410:LEU:HD22	1.86	0.57
1:A:118:PHE:HA	1:A:150:VAL:HG22	1.86	0.57
1:A:265:ILE:CD1	1:A:358:ILE:HG21	2.35	0.57
1:A:485:ARG:HH21	1:A:550:HIS:HD2	1.53	0.56
3:C:29:HIS:CD2	3:C:30:ILE:HG13	2.40	0.56
1:A:190:ARG:HD2	1:A:440:PRO:HB2	1.87	0.56
1:A:409:ARG:NH2	6:A:701:MLI:O9	2.37	0.56
1:A:129:ARG:NH1	1:A:130:ALA:H	2.04	0.56
2:B:69:ILE:O	2:B:159:ILE:HD11	2.05	0.55
1:A:246:GLN:HE22	1:A:600:ARG:HE	1.51	0.55
2:B:21:PRO:HG3	2:B:108:ILE:O	2.06	0.55
3:C:52:LEU:HD21	3:C:98:LEU:HA	1.89	0.54
1:A:91:LEU:HA	1:A:602:VAL:HG11	1.89	0.54
1:A:566:LYS:HB2	1:A:567:PRO:HD2	1.89	0.53
1:A:414:SER:O	1:A:418:LEU:HD13	2.09	0.53
1:A:516:TRP:HB3	2:B:60:THR:HG21	1.90	0.53
2:B:27:LYS:HE2	2:B:28:PRO:HD3	1.91	0.53
1:A:157:SER:O	1:A:161:THR:HG23	2.08	0.53
1:A:239:THR:CG2	1:A:588:VAL:HG13	2.39	0.53
1:A:401:CYS:C	1:A:403:SER:H	2.12	0.52
3:C:69:ASN:ND2	3:C:71:GLU:HB2	2.24	0.52
1:A:497:ILE:HG22	1:A:534:LEU:HD13	1.91	0.52
1:A:254:HIS:HD2	1:A:256:THR:N	2.07	0.52

*Continued on next page...*

*Continued from previous page...*

Atom-1	Atom-2	Interatomic distance (Å)	Clash overlap (Å)
3:C:69:ASN:HD21	3:C:71:GLU:HB2	1.75	0.52
1:A:127:TYR:OH	1:A:129:ARG:HD3	2.10	0.51
1:A:246:GLN:HE22	1:A:600:ARG:HH21	1.59	0.51
2:B:65:CYS:O	2:B:66:ARG:HG3	2.10	0.51
2:B:21:PRO:HD3	2:B:109:LYS:HG3	1.92	0.51
1:A:61:ALA:HA	5:A:700:FAD:C5X	2.41	0.51
2:B:178:TYR:CD1	2:B:214:ARG:HB2	2.46	0.51
2:B:208:ASP:HB2	2:B:209:PRO:CD	2.41	0.51
2:B:27:LYS:HB3	2:B:28:PRO:HD3	1.93	0.51
2:B:52:LYS:HA	2:B:56:ASP:O	2.10	0.51
2:B:74:ALA:O	2:B:102:LEU:HG	2.11	0.51
2:B:189:ARG:NH2	2:B:193:ASP:OD1	2.44	0.51
1:A:374:ASN:HB3	1:A:376:LYS:H	1.76	0.50
1:A:104:ALA:HB3	1:A:105:PRO:HD3	1.93	0.50
1:A:27:ALA:H	5:A:700:FAD:H4B	1.75	0.49
1:A:66:ASN:ND2	1:A:411:GLY:O	2.41	0.49
1:A:581:ARG:HH22	1:A:604:ASP:CG	2.15	0.49
3:C:57:SER:O	3:C:61:LEU:HB2	2.13	0.49
2:B:230:ASN:HD22	2:B:230:ASN:C	2.15	0.49
1:A:60:ALA:CB	5:A:700:FAD:HM72	2.41	0.49
3:C:104:ASN:HD22	3:C:107:ARG:HE	1.61	0.49
1:A:48:VAL:HG12	5:A:700:FAD:H2A	1.95	0.49
1:A:568:ILE:HG13	1:A:569:GLN:N	2.27	0.49
1:A:61:ALA:HA	5:A:700:FAD:C6	2.43	0.48
1:A:113:ASN:HD22	2:B:138:GLY:H	1.60	0.48
4:D:61:TYR:HA	11:D:1306:EPH:H52	1.95	0.48
1:A:130:ALA:HB2	1:A:145:HIS:CD2	2.48	0.48
1:A:29:GLY:N	1:A:58:THR:HG21	2.24	0.48
2:B:14:PHE:O	2:B:32:THR:HA	2.13	0.48
1:A:258:ILE:HD12	1:A:263:CYS:O	2.13	0.48
2:B:166:THR:O	2:B:166:THR:CG2	2.62	0.47
1:A:64:GLY:HA2	1:A:154:THR:HG21	1.95	0.47
1:A:298:ARG:HH22	1:A:409:ARG:NH2	2.13	0.47
1:A:342:SER:OG	1:A:353:VAL:HG21	2.14	0.47
2:B:129:LEU:HD11	2:B:195:ARG:CB	2.43	0.47
3:C:109:LEU:HD13	4:D:51:VAL:HG12	1.97	0.47
1:A:117:PRO:O	1:A:150:VAL:HG13	2.14	0.47
1:A:249:GLU:HB2	1:A:540:ALA:HB2	1.97	0.46
1:A:113:ASN:ND2	2:B:138:GLY:H	2.13	0.46
4:D:124:VAL:HG13	4:D:128:LYS:HB3	1.97	0.46
1:A:114:TYR:CD2	1:A:165:ARG:HD2	2.50	0.46

*Continued on next page...*



*Continued from previous page...*

Atom-1	Atom-2	Interatomic distance (Å)	Clash overlap (Å)
1:A:182:LEU:HD23	1:A:184:MET:HE1	1.97	0.46
1:A:405:HIS:CG	1:A:409:ARG:HG3	2.50	0.46
1:A:414:SER:O	1:A:417:ASP:HB3	2.14	0.46
1:A:415:LEU:HG	5:A:700:FAD:N3	2.28	0.46
1:A:554:ASP:HB2	1:A:555:PHE:CD2	2.51	0.46
2:B:69:ILE:O	2:B:159:ILE:CD1	2.64	0.45
1:A:353:VAL:CG1	1:A:358:ILE:HD11	2.44	0.45
3:C:62:SER:HB2	3:C:66:LEU:HD12	1.98	0.45
1:A:267:GLU:OE1	1:A:298:ARG:HD3	2.17	0.45
1:A:10:SER:C	1:A:12:GLN:H	2.19	0.45
2:B:64:SER:HB3	2:B:70:CYS:SG	2.56	0.45
2:B:188:TYR:OH	2:B:237:GLU:HG2	2.17	0.45
1:A:57:HIS:O	1:A:59:VAL:N	2.51	0.44
2:B:230:ASN:ND2	2:B:233:LYS:H	2.15	0.44
1:A:23:VAL:HG23	1:A:207:ALA:HB3	1.99	0.44
1:A:57:HIS:CE1	1:A:226:SER:HA	2.52	0.44
1:A:58:THR:HG22	5:A:700:FAD:O4'	2.17	0.44
5:A:700:FAD:H9	5:A:700:FAD:H1'1	1.84	0.44
1:A:457:LEU:O	1:A:509:THR:HG21	2.17	0.44
1:A:270:ARG:HD2	1:A:294:ASP:O	2.18	0.44
4:D:128:LYS:O	4:D:132:MET:HG3	2.17	0.44
1:A:556:LYS:HE2	1:A:556:LYS:HB3	1.85	0.44
4:D:58:PRO:HB3	11:D:1306:EPH:H28	2.00	0.44
1:A:299:ASP:O	1:A:303:ARG:HB2	2.17	0.44
2:B:103:PRO:O	2:B:166:THR:HG23	2.17	0.44
4:D:89:THR:HG23	4:D:102:LYS:NZ	2.33	0.43
1:A:174:PHE:HB3	1:A:177:TYR:CD1	2.53	0.43
2:B:44:VAL:HG11	2:B:77:ILE:HD12	2.00	0.43
1:A:461:ASN:ND2	1:A:508:LYS:HE3	2.34	0.43
1:A:464:ILE:O	1:A:508:LYS:N	2.51	0.43
2:B:172:TRP:HZ3	3:C:30:ILE:HG23	1.83	0.43
2:B:164:CYS:HB2	2:B:221:CYS:HB2	2.01	0.43
1:A:131:PHE:CD1	1:A:411:GLY:HA3	2.54	0.43
1:A:272:GLU:HB3	1:A:333:GLN:HE21	1.84	0.43
1:A:129:ARG:HA	1:A:129:ARG:HD2	1.54	0.42
1:A:200:GLY:HA3	1:A:514:MET:HB3	2.01	0.42
2:B:132:LYS:HG2	2:B:197:ASP:HB3	2.01	0.42
2:B:208:ASP:HB2	2:B:209:PRO:HD3	2.01	0.42
2:B:27:LYS:HB3	2:B:28:PRO:HD2	2.00	0.42
2:B:67:GLU:HB3	2:B:69:ILE:HD11	2.00	0.42
2:B:45:LEU:O	2:B:49:ILE:HG12	2.20	0.42

*Continued on next page...*

Continued from previous page...

Atom-1	Atom-2	Interatomic distance (Å)	Clash overlap (Å)
1:A:501:TYR:HA	1:A:504:LEU:HD23	2.01	0.42
2:B:165:SER:HA	2:B:181:PRO:HD2	2.02	0.42
1:A:88:SER:HB2	1:A:406:GLY:HA3	2.02	0.41
1:A:374:ASN:HD22	1:A:374:ASN:HA	1.67	0.41
1:A:52:PHE:CD1	1:A:53:PRO:HD2	2.56	0.41
2:B:198:PHE:HD2	2:B:201:GLU:HG3	1.86	0.41
1:A:130:ALA:O	1:A:271:GLY:HA3	2.21	0.41
3:C:46:ARG:HG2	10:C:1305:HEM:O2D	2.21	0.41
1:A:57:HIS:C	1:A:59:VAL:N	2.73	0.41
2:B:47:ALA:O	2:B:51:ILE:HG23	2.21	0.41
1:A:162:LEU:HD23	1:A:162:LEU:HA	1.96	0.41
1:A:231:THR:HA	1:A:529:LEU:HD21	2.03	0.41
1:A:493:GLY:O	1:A:497:ILE:HG12	2.20	0.41
1:A:29:GLY:HA3	1:A:418:LEU:HD23	2.03	0.41
1:A:152:ASP:HB2	1:A:339:PRO:HD2	2.03	0.41
1:A:521:VAL:HA	1:A:524:LEU:HD12	2.02	0.41
2:B:20:ASP:HA	2:B:21:PRO:HD3	1.88	0.41
1:A:114:TYR:CE2	1:A:165:ARG:HD2	2.56	0.41
1:A:556:LYS:H	1:A:556:LYS:HD2	1.86	0.41
2:B:154:GLY:N	2:B:157:GLU:OE1	2.54	0.41
3:C:104:ASN:ND2	3:C:107:ARG:HE	2.19	0.41
1:A:443:LYS:HB2	1:A:446:ALA:HB2	2.02	0.40
2:B:108:ILE:HD12	2:B:112:VAL:HG12	2.02	0.40
3:C:78:LYS:HA	3:C:82:LEU:HD21	2.03	0.40
2:B:16:ILE:HG21	2:B:59:LEU:HD11	2.04	0.40

There are no symmetry-related clashes.

## 5.3 Torsion angles [i](#)

### 5.3.1 Protein backbone [i](#)

In the following table, the Percentiles column shows the percent Ramachandran outliers of the chain as a percentile score with respect to all X-ray entries followed by that with respect to entries of similar resolution.

The Analysed column shows the number of residues for which the backbone conformation was analysed, and the total number of residues.

Mol	Chain	Analysed	Favoured	Allowed	Outliers	Percentiles
1	A	611/622 (98%)	573 (94%)	36 (6%)	2 (0%)	41 70

Continued on next page...

Continued from previous page...

Mol	Chain	Analysed	Favoured	Allowed	Outliers	Percentiles	
2	B	237/252 (94%)	225 (95%)	11 (5%)	1 (0%)	34	65
3	C	136/140 (97%)	129 (95%)	5 (4%)	2 (2%)	10	32
4	D	100/103 (97%)	95 (95%)	5 (5%)	0	100	100
All	All	1084/1117 (97%)	1022 (94%)	57 (5%)	5 (0%)	29	60

All (5) Ramachandran outliers are listed below:

Mol	Chain	Res	Type
3	C	84	PRO
1	A	260	GLY
1	A	11	THR
2	B	175	GLY
3	C	81	CYS

### 5.3.2 Protein sidechains [i](#)

In the following table, the Percentiles column shows the percent sidechain outliers of the chain as a percentile score with respect to all X-ray entries followed by that with respect to entries of similar resolution.

The Analysed column shows the number of residues for which the sidechain conformation was analysed, and the total number of residues.

Mol	Chain	Analysed	Rotameric	Outliers	Percentiles	
1	A	499/506 (99%)	457 (92%)	42 (8%)	11	30
2	B	214/220 (97%)	199 (93%)	15 (7%)	15	39
3	C	117/118 (99%)	108 (92%)	9 (8%)	13	34
4	D	76/76 (100%)	74 (97%)	2 (3%)	46	76
All	All	906/920 (98%)	838 (92%)	68 (8%)	13	36

All (68) residues with a non-rotameric sidechain are listed below:

Mol	Chain	Res	Type
1	A	11	THR
1	A	44	ASN
1	A	58	THR
1	A	59	VAL
1	A	72	MET
1	A	74	GLU

Continued on next page...

*Continued from previous page...*

<b>Mol</b>	<b>Chain</b>	<b>Res</b>	<b>Type</b>
1	A	129	ARG
1	A	131	PHE
1	A	165	ARG
1	A	182	LEU
1	A	208	ARG
1	A	220	THR
1	A	264	LEU
1	A	294	ASP
1	A	306	THR
1	A	324	LEU
1	A	352	ASP
1	A	368	MET
1	A	374	ASN
1	A	384	ASN
1	A	403	SER
1	A	410	LEU
1	A	419	VAL
1	A	458	ARG
1	A	461	ASN
1	A	463	THR
1	A	485	ARG
1	A	488	SER
1	A	504	LEU
1	A	512	ARG
1	A	514	MET
1	A	534	LEU
1	A	541	GLU
1	A	554	ASP
1	A	556	LYS
1	A	561	GLU
1	A	569	GLN
1	A	572	GLN
1	A	588	VAL
1	A	591	LYS
1	A	597	LEU
1	A	605	LYS
2	B	51	ILE
2	B	63	ARG
2	B	66	ARG
2	B	69	ILE
2	B	86	THR
2	B	87	ARG

*Continued on next page...*

*Continued from previous page...*

Mol	Chain	Res	Type
2	B	88	ARG
2	B	134	GLU
2	B	146	ILE
2	B	159	ILE
2	B	189	ARG
2	B	192	ILE
2	B	214	ARG
2	B	220	ASN
2	B	230	ASN
3	C	13	GLU
3	C	23	ASN
3	C	26	LEU
3	C	30	ILE
3	C	31	THR
3	C	46	ARG
3	C	98	LEU
3	C	115	LYS
3	C	123	THR
4	D	78	LEU
4	D	134	TRP

Sometimes sidechains can be flipped to improve hydrogen bonding and reduce clashes. All (23) such sidechains are listed below:

Mol	Chain	Res	Type
1	A	44	ASN
1	A	113	ASN
1	A	145	HIS
1	A	246	GLN
1	A	254	HIS
1	A	374	ASN
1	A	384	ASN
1	A	408	ASN
1	A	461	ASN
1	A	474	GLN
1	A	550	HIS
1	A	571	GLN
1	A	572	GLN
1	A	579	HIS
2	B	38	ASN
2	B	121	GLN
2	B	174	ASN
2	B	186	GLN

*Continued on next page...*

*Continued from previous page...*

Mol	Chain	Res	Type
2	B	220	ASN
2	B	230	ASN
3	C	23	ASN
3	C	29	HIS
3	C	104	ASN

### 5.3.3 RNA [i](#)

There are no RNA molecules in this entry.

## 5.4 Non-standard residues in protein, DNA, RNA chains [i](#)

There are no non-standard protein/DNA/RNA residues in this entry.

## 5.5 Carbohydrates [i](#)

There are no monosaccharides in this entry.

## 5.6 Ligand geometry [i](#)

8 ligands are modelled in this entry.

In the following table, the Counts columns list the number of bonds (or angles) for which Mogul statistics could be retrieved, the number of bonds (or angles) that are observed in the model and the number of bonds (or angles) that are defined in the Chemical Component Dictionary. The Link column lists molecule types, if any, to which the group is linked. The Z score for a bond length (or angle) is the number of standard deviations the observed value is removed from the expected value. A bond length (or angle) with  $|Z| > 2$  is considered an outlier worth inspection. RMSZ is the root-mean-square of all Z scores of the bond lengths (or angles).

Mol	Type	Chain	Res	Link	Bond lengths			Bond angles		
					Counts	RMSZ	$\# Z  > 2$	Counts	RMSZ	$\# Z  > 2$
10	HEM	C	1305	3,4	41,50,50	1.97	7 (17%)	45,82,82	1.57	5 (11%)
11	EPH	D	1306	-	43,43,48	1.75	8 (18%)	45,48,53	1.19	2 (4%)
5	FAD	A	700	1	53,58,58	1.19	4 (7%)	68,89,89	1.47	10 (14%)
12	N1M	D	1201	-	11,11,11	0.82	1 (9%)	14,14,14	0.91	0
9	F3S	B	304	2	0,9,9	-	-	-	-	-
8	SF4	B	303	2	0,12,12	-	-	-	-	-
6	MLI	A	701	-	6,6,6	1.16	0	7,7,7	0.81	0
7	FES	B	302	2	0,4,4	-	-	-	-	-

In the following table, the Chirals column lists the number of chiral outliers, the number of chiral centers analysed, the number of these observed in the model and the number defined in the Chemical Component Dictionary. Similar counts are reported in the Torsion and Rings columns. '-' means no outliers of that kind were identified.

Mol	Type	Chain	Res	Link	Chirals	Torsions	Rings
10	HEM	C	1305	3,4	-	5/12/54/54	-
5	FAD	A	700	1	-	6/30/50/50	0/6/6/6
12	N1M	D	1201	-	-	2/6/6/6	0/1/1/1
11	EPH	D	1306	-	-	29/47/47/52	-
9	F3S	B	304	2	-	-	0/3/3/3
8	SF4	B	303	2	-	-	0/6/5/5
6	MLI	A	701	-	-	2/4/4/4	-
7	FES	B	302	2	-	-	0/1/1/1

All (20) bond length outliers are listed below:

Mol	Chain	Res	Type	Atoms	Z	Observed(Å)	Ideal(Å)
10	C	1305	HEM	C3D-C2D	7.88	1.53	1.36
11	D	1306	EPH	P1-O6	5.14	1.79	1.55
11	D	1306	EPH	O1-C3	4.44	1.46	1.34
11	D	1306	EPH	O2-C4	4.36	1.46	1.33
10	C	1305	HEM	C3C-C2C	-4.35	1.34	1.40
5	A	700	FAD	C4X-N5	4.20	1.38	1.30
5	A	700	FAD	C2A-N3A	3.99	1.38	1.32
11	D	1306	EPH	C29-C28	3.73	1.53	1.31
11	D	1306	EPH	C25-C24	3.70	1.53	1.31
11	D	1306	EPH	C13-C12	3.68	1.53	1.31
10	C	1305	HEM	C3C-CAC	3.63	1.55	1.47
11	D	1306	EPH	C15-C16	3.13	1.53	1.29
5	A	700	FAD	C10-N1	2.76	1.38	1.33
10	C	1305	HEM	CAA-C2A	2.60	1.55	1.52
5	A	700	FAD	C2A-N1A	2.57	1.38	1.33
10	C	1305	HEM	CAB-C3B	2.56	1.54	1.47
11	D	1306	EPH	P1-O7	2.52	1.59	1.50
10	C	1305	HEM	FE-NB	2.46	2.09	1.96
12	D	1201	N1M	C2-C1	2.41	1.49	1.39
10	C	1305	HEM	CMB-C2B	2.18	1.55	1.50

All (17) bond angle outliers are listed below:

Mol	Chain	Res	Type	Atoms	Z	Observed(°)	Ideal(°)
10	C	1305	HEM	C4D-ND-C1D	6.11	111.38	105.07

*Continued on next page...*

*Continued from previous page...*

Mol	Chain	Res	Type	Atoms	Z	Observed(°)	Ideal(°)
5	A	700	FAD	N3A-C2A-N1A	-6.04	119.24	128.68
11	D	1306	EPH	O1-C3-C5	4.42	121.03	111.50
5	A	700	FAD	P-O3P-PA	-3.78	119.86	132.83
5	A	700	FAD	C4-N3-C2	-3.09	119.94	125.64
10	C	1305	HEM	C4C-CHD-C1D	3.05	126.58	122.56
5	A	700	FAD	C4X-C4-N3	2.80	120.30	113.19
5	A	700	FAD	C10-C4X-N5	-2.76	119.00	124.86
5	A	700	FAD	C4X-C10-N10	2.72	120.46	116.48
11	D	1306	EPH	O2-C4-C18	2.68	120.32	111.91
10	C	1305	HEM	C4B-CHC-C1C	2.62	126.01	122.56
5	A	700	FAD	C4X-C10-N1	-2.61	118.67	124.73
5	A	700	FAD	O4-C4-C4X	-2.49	120.00	126.60
10	C	1305	HEM	CMA-C3A-C4A	-2.48	124.66	128.46
5	A	700	FAD	C10-N1-C2	2.44	121.78	116.90
5	A	700	FAD	C9A-C5X-N5	-2.19	120.06	122.43
10	C	1305	HEM	C1B-NB-C4B	2.13	107.28	105.07

There are no chirality outliers.

All (44) torsion outliers are listed below:

Mol	Chain	Res	Type	Atoms
10	C	1305	HEM	C2B-C3B-CAB-CBB
10	C	1305	HEM	C4B-C3B-CAB-CBB
11	D	1306	EPH	C25-C26-C27-C28
11	D	1306	EPH	C37-O5-P1-O7
11	D	1306	EPH	C37-O5-P1-O8
11	D	1306	EPH	C5-C3-O1-C2
11	D	1306	EPH	C38-O8-P1-O5
11	D	1306	EPH	C38-O8-P1-O6
11	D	1306	EPH	C38-O8-P1-O7
11	D	1306	EPH	O8-C38-C39-N1
12	D	1201	N1M	O-C7-N-C8
12	D	1201	N1M	C2-C7-N-C8
11	D	1306	EPH	O3-C3-O1-C2
11	D	1306	EPH	C18-C4-O2-C1
11	D	1306	EPH	O4-C4-O2-C1
11	D	1306	EPH	C27-C28-C29-C30
10	C	1305	HEM	C3D-CAD-CBD-CGD
5	A	700	FAD	O3'-C3'-C4'-C5'
11	D	1306	EPH	C11-C12-C13-C14
5	A	700	FAD	C2'-C3'-C4'-C5'
11	D	1306	EPH	C6-C7-C8-C9

*Continued on next page...*



*Continued from previous page...*

Mol	Chain	Res	Type	Atoms
5	A	700	FAD	C2'-C3'-C4'-O4'
11	D	1306	EPH	C20-C21-C22-C23
11	D	1306	EPH	C19-C20-C21-C22
11	D	1306	EPH	C5-C6-C7-C8
11	D	1306	EPH	C11-C10-C9-C8
11	D	1306	EPH	C23-C24-C25-C26
5	A	700	FAD	O3'-C3'-C4'-O4'
11	D	1306	EPH	C4-C18-C19-C20
11	D	1306	EPH	C18-C19-C20-C21
11	D	1306	EPH	C12-C13-C14-C15
5	A	700	FAD	PA-O3P-P-O5'
11	D	1306	EPH	C2-C37-O5-P1
11	D	1306	EPH	C39-C38-O8-P1
10	C	1305	HEM	CAA-CBA-CGA-O1A
11	D	1306	EPH	O2-C1-C2-O1
10	C	1305	HEM	CAA-CBA-CGA-O2A
5	A	700	FAD	O4B-C4B-C5B-O5B
11	D	1306	EPH	O1-C3-C5-C6
6	A	701	MLI	C2-C1-C3-O8
11	D	1306	EPH	O3-C3-C5-C6
11	D	1306	EPH	C19-C18-C4-O2
11	D	1306	EPH	C26-C27-C28-C29
6	A	701	MLI	C2-C1-C3-O9

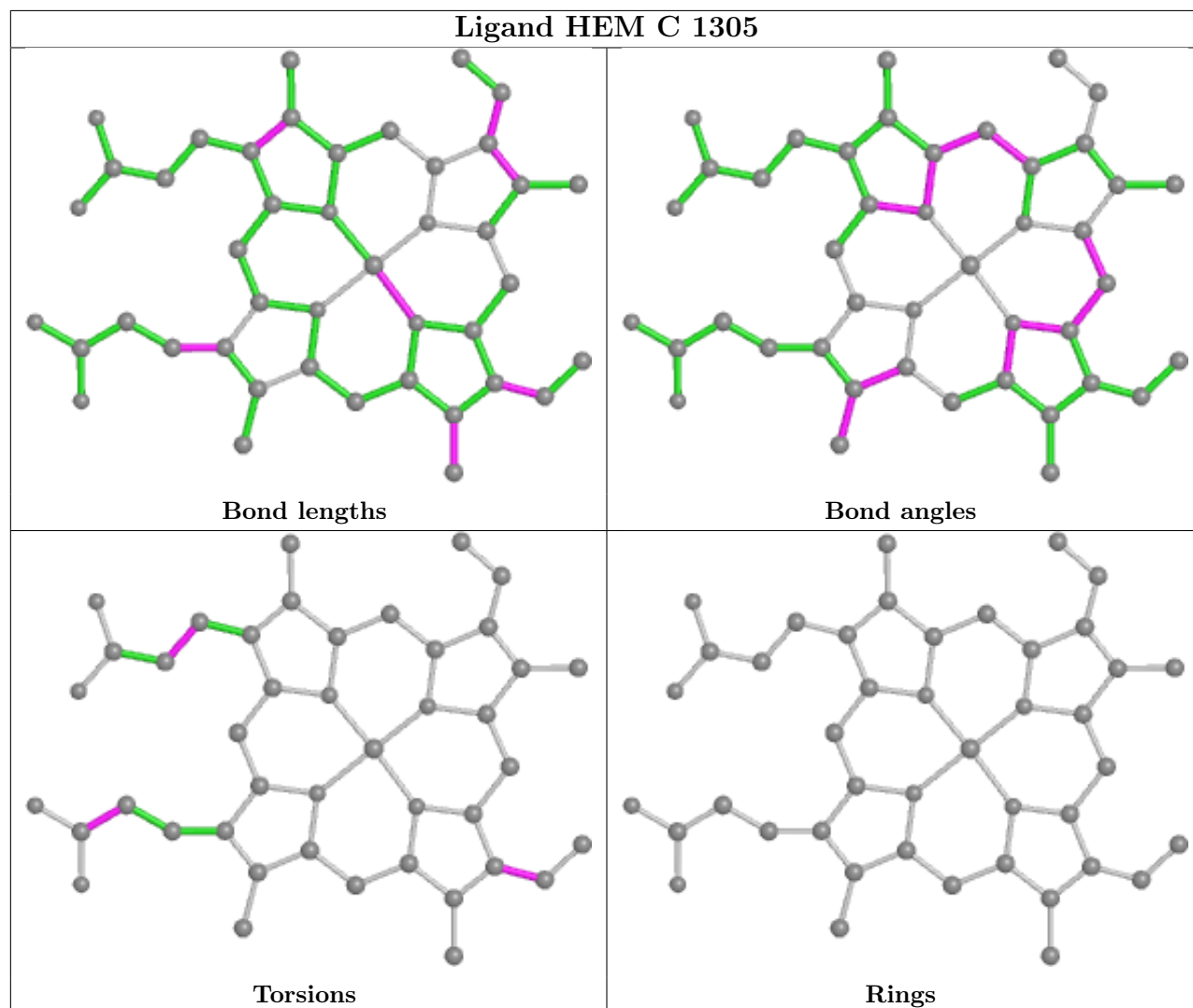
There are no ring outliers.

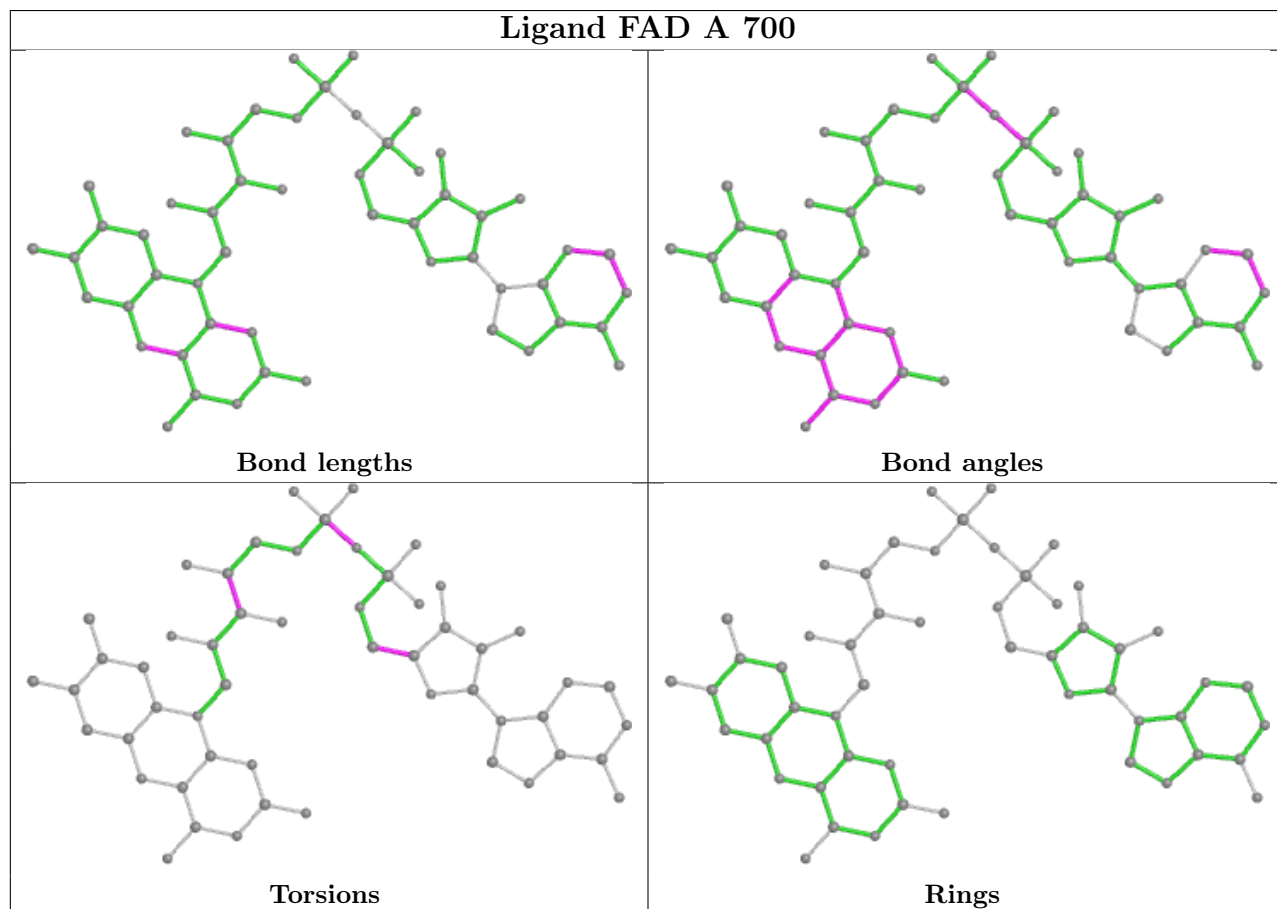
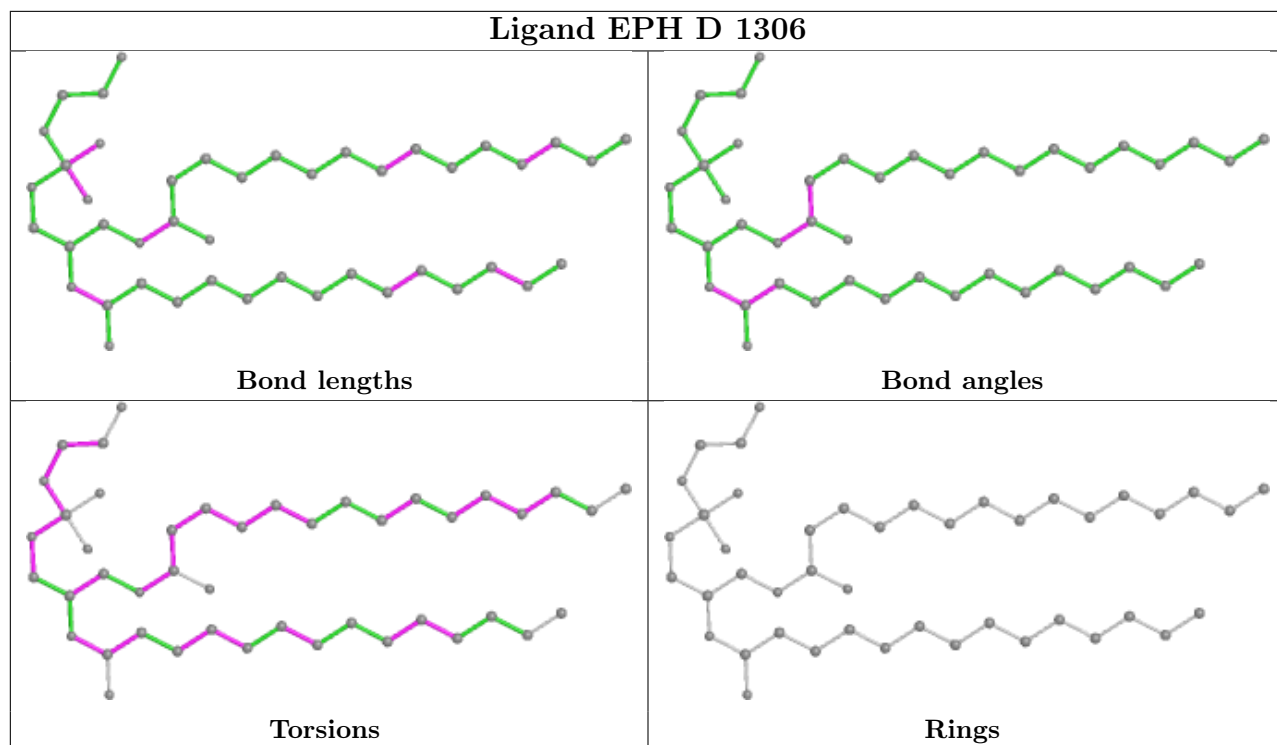
4 monomers are involved in 22 short contacts:

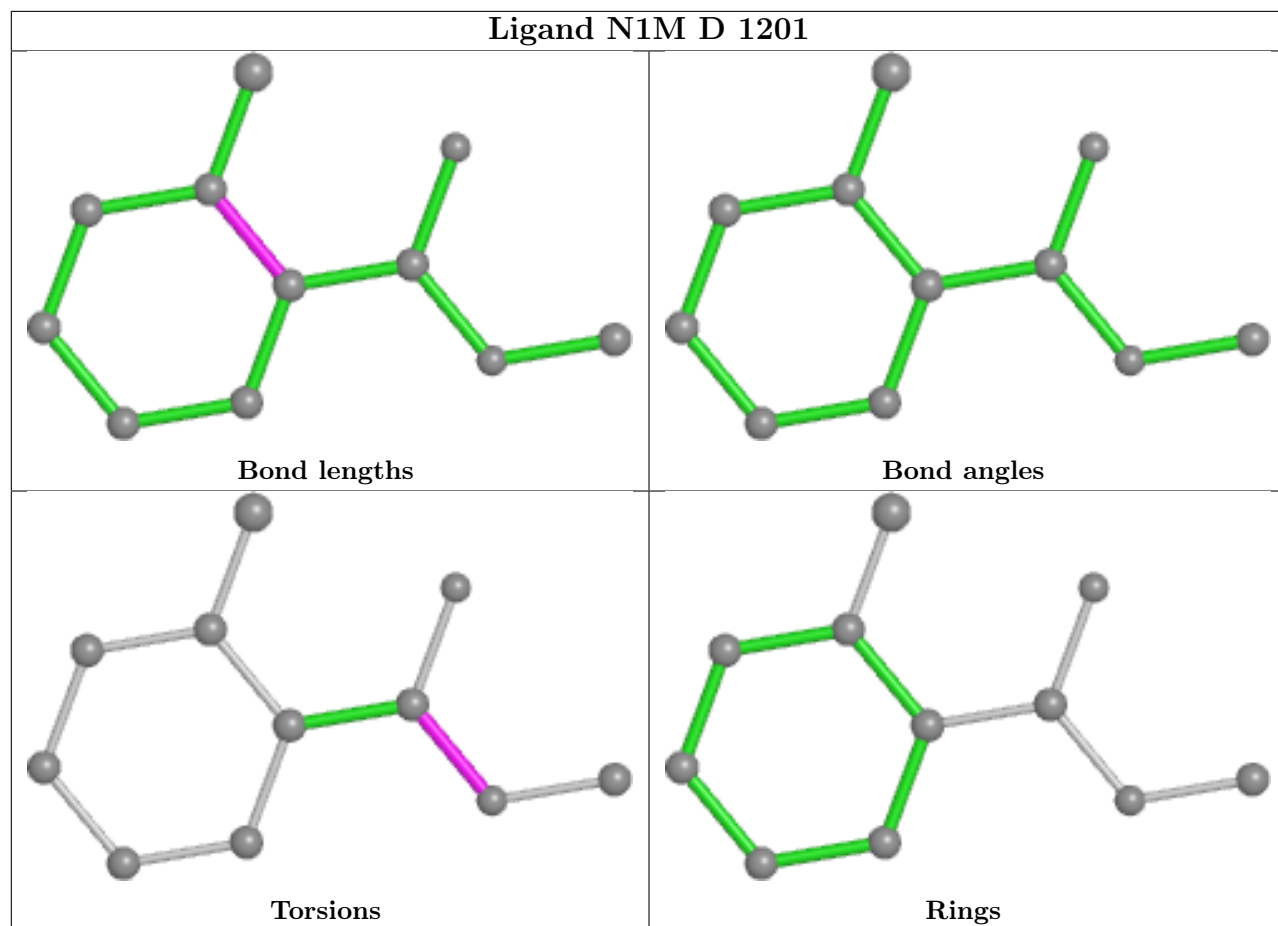
Mol	Chain	Res	Type	Clashes	Symm-Clashes
10	C	1305	HEM	3	0
11	D	1306	EPH	2	0
5	A	700	FAD	16	0
6	A	701	MLI	1	0

The following is a two-dimensional graphical depiction of Mogul quality analysis of bond lengths, bond angles, torsion angles, and ring geometry for all instances of the Ligand of Interest. In addition, ligands with molecular weight > 250 and outliers as shown on the validation Tables will also be included. For torsion angles, if less than 5% of the Mogul distribution of torsion angles is within 10 degrees of the torsion angle in question, then that torsion angle is considered an outlier. Any bond that is central to one or more torsion angles identified as an outlier by Mogul will be highlighted in the graph. For rings, the root-mean-square deviation (RMSD) between the ring in question and similar rings identified by Mogul is calculated over all ring torsion angles. If the average RMSD is greater than 60 degrees and the minimal RMSD between the ring in question and

any Mogul-identified rings is also greater than 60 degrees, then that ring is considered an outlier. The outliers are highlighted in purple. The color gray indicates Mogul did not find sufficient equivalents in the CSD to analyse the geometry.







## 5.7 Other polymers [i](#)

There are no such residues in this entry.

## 5.8 Polymer linkage issues [i](#)

There are no chain breaks in this entry.

## 6 Fit of model and data [i](#)

### 6.1 Protein, DNA and RNA chains [i](#)

In the following table, the column labelled ‘#RSRZ > 2’ contains the number (and percentage) of RSRZ outliers, followed by percent RSRZ outliers for the chain as percentile scores relative to all X-ray entries and entries of similar resolution. The OWAB column contains the minimum, median, 95<sup>th</sup> percentile and maximum values of the occupancy-weighted average B-factor per residue. The column labelled ‘Q < 0.9’ lists the number of (and percentage) of residues with an average occupancy less than 0.9.

Mol	Chain	Analysed	<RSRZ>	#RSRZ>2	OWAB(Å <sup>2</sup> )	Q<0.9
1	A	613/622 (98%)	0.09	17 (2%) 53 50	56, 75, 106, 131	0
2	B	239/252 (94%)	0.16	12 (5%) 28 25	56, 70, 105, 126	0
3	C	138/140 (98%)	0.06	12 (8%) 10 8	56, 79, 126, 138	0
4	D	102/103 (99%)	0.09	5 (4%) 29 26	61, 79, 99, 115	0
All	All	1092/1117 (97%)	0.10	46 (4%) 36 33	56, 75, 107, 138	0

All (46) RSRZ outliers are listed below:

Mol	Chain	Res	Type	RSRZ
4	D	35	SER	8.3
2	B	11	ILE	4.5
1	A	224	CYS	3.5
3	C	86	LEU	3.2
1	A	230	SER	3.2
3	C	87	ILE	3.1
2	B	37	LEU	3.1
1	A	225	THR	2.9
2	B	93	LEU	2.9
3	C	88	TYR	2.8
1	A	326	LEU	2.8
1	A	317	PRO	2.8
2	B	94	ASP	2.7
3	C	84	PRO	2.7
1	A	575	PRO	2.6
1	A	227	ALA	2.6
1	A	214	THR	2.6
3	C	85	THR	2.6
1	A	277	ILE	2.6
1	A	226	SER	2.5
2	B	36	ASP	2.5

*Continued on next page...*

*Continued from previous page...*

Mol	Chain	Res	Type	RSRZ
3	C	81	CYS	2.5
1	A	216	GLY	2.4
2	B	246	LYS	2.4
1	A	414	SER	2.3
2	B	35	ILE	2.3
1	A	325	GLN	2.3
2	B	65	CYS	2.3
3	C	82	LEU	2.3
1	A	61	ALA	2.3
3	C	143	MET	2.2
2	B	34	GLU	2.2
3	C	63	ALA	2.2
2	B	233	LYS	2.2
2	B	70	CYS	2.2
4	D	128	LYS	2.1
4	D	62	LEU	2.1
3	C	80	LEU	2.1
1	A	327	HIS	2.1
4	D	124	VAL	2.1
1	A	229	THR	2.1
1	A	155	GLY	2.1
2	B	9	PRO	2.1
3	C	140	LEU	2.0
3	C	142	ALA	2.0
4	D	36	SER	2.0

## 6.2 Non-standard residues in protein, DNA, RNA chains [i](#)

There are no non-standard protein/DNA/RNA residues in this entry.

## 6.3 Carbohydrates [i](#)

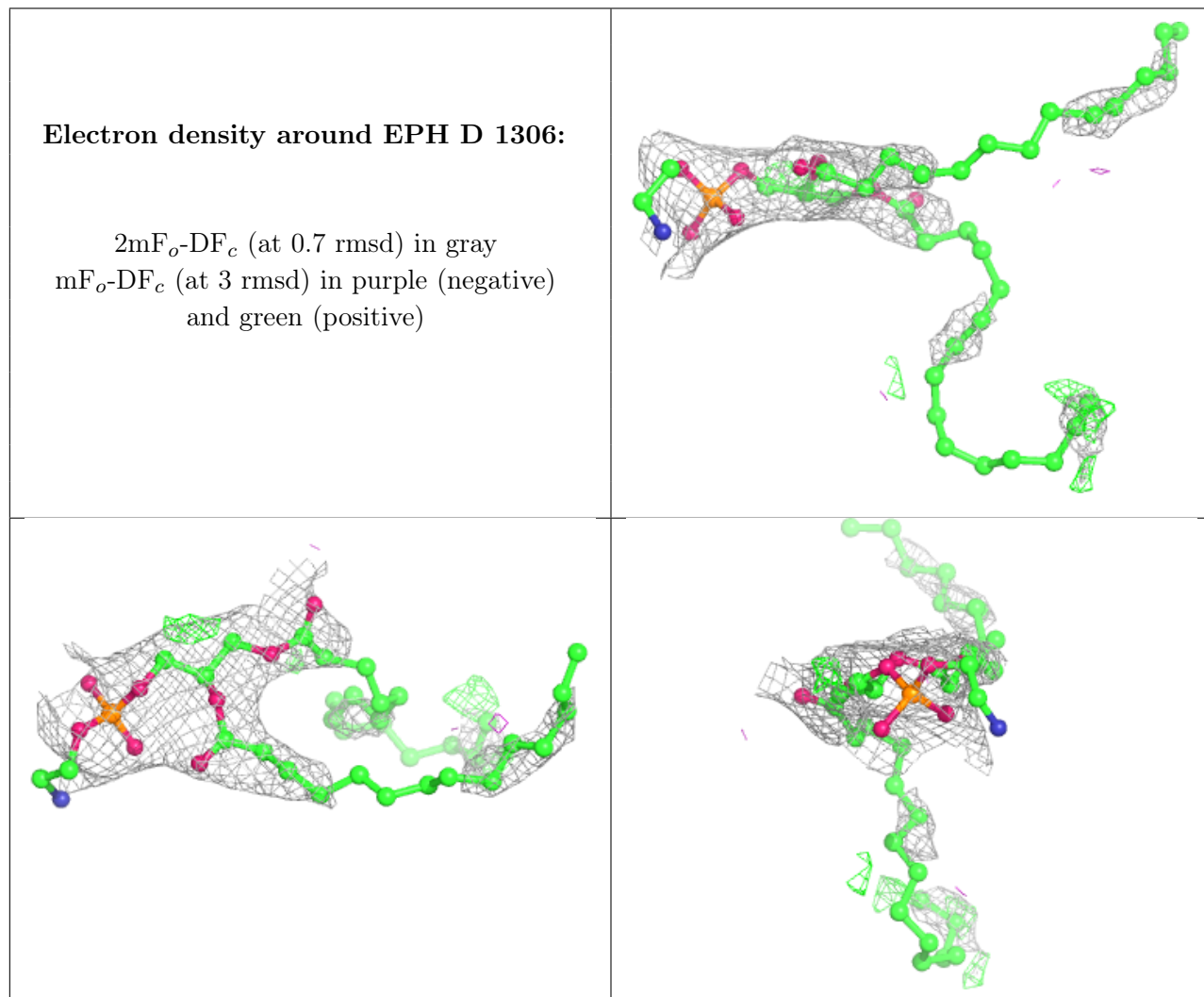
There are no monosaccharides in this entry.

## 6.4 Ligands [i](#)

In the following table, the Atoms column lists the number of modelled atoms in the group and the number defined in the chemical component dictionary. The B-factors column lists the minimum, median, 95<sup>th</sup> percentile and maximum values of B factors of atoms in the group. The column labelled 'Q < 0.9' lists the number of atoms with occupancy less than 0.9.

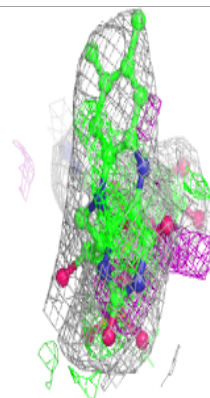
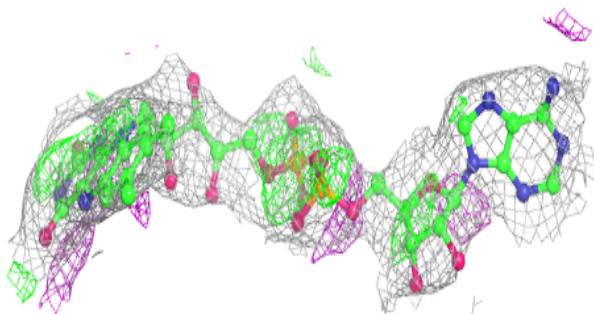
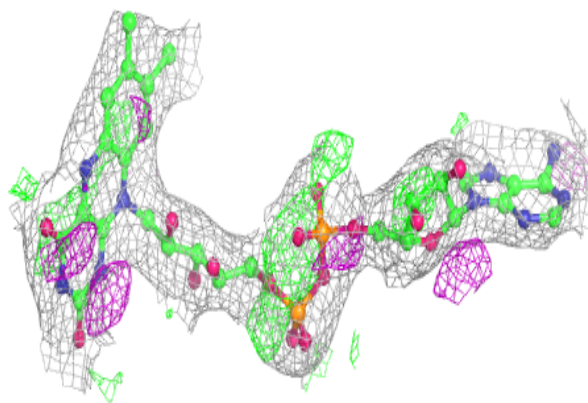
Mol	Type	Chain	Res	Atoms	RSCC	RSR	B-factors( $\text{\AA}^2$ )	Q<0.9
11	EPH	D	1306	44/49	0.77	0.61	106,118,123,123	0
5	FAD	A	700	53/53	0.91	0.33	47,60,75,75	0
6	MLI	A	701	7/7	0.94	0.32	79,81,82,82	0
10	HEM	C	1305	43/43	0.96	0.21	62,64,70,72	0
7	FES	B	302	4/4	0.98	0.21	61,62,64,64	0
8	SF4	B	303	8/8	0.99	0.17	59,59,60,60	0
9	F3S	B	304	7/7	0.99	0.16	66,67,70,70	0
12	N1M	D	1201	11/11	0.99	0.15	80,80,81,84	0

The following is a graphical depiction of the model fit to experimental electron density of all instances of the Ligand of Interest. In addition, ligands with molecular weight > 250 and outliers as shown on the geometry validation Tables will also be included. Each fit is shown from different orientation to approximate a three-dimensional view.

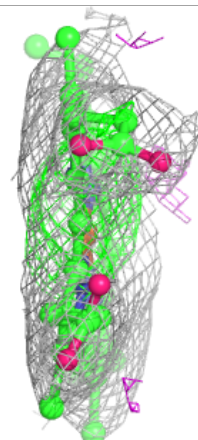
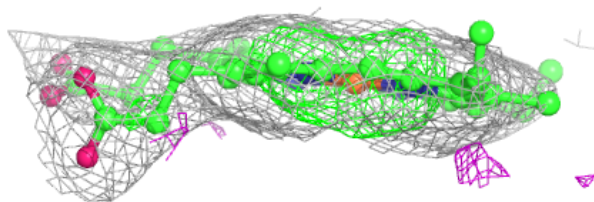
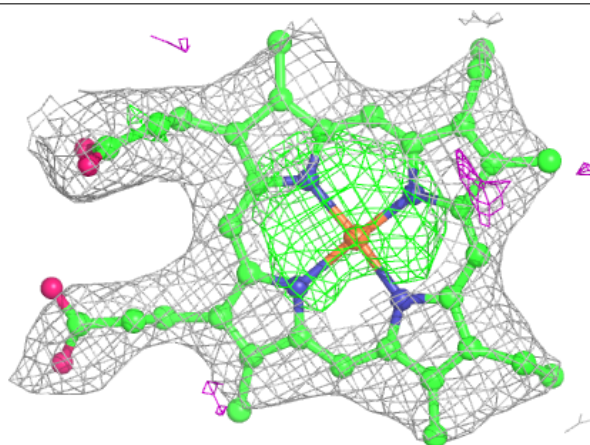


**Electron density around FAD A 700:**

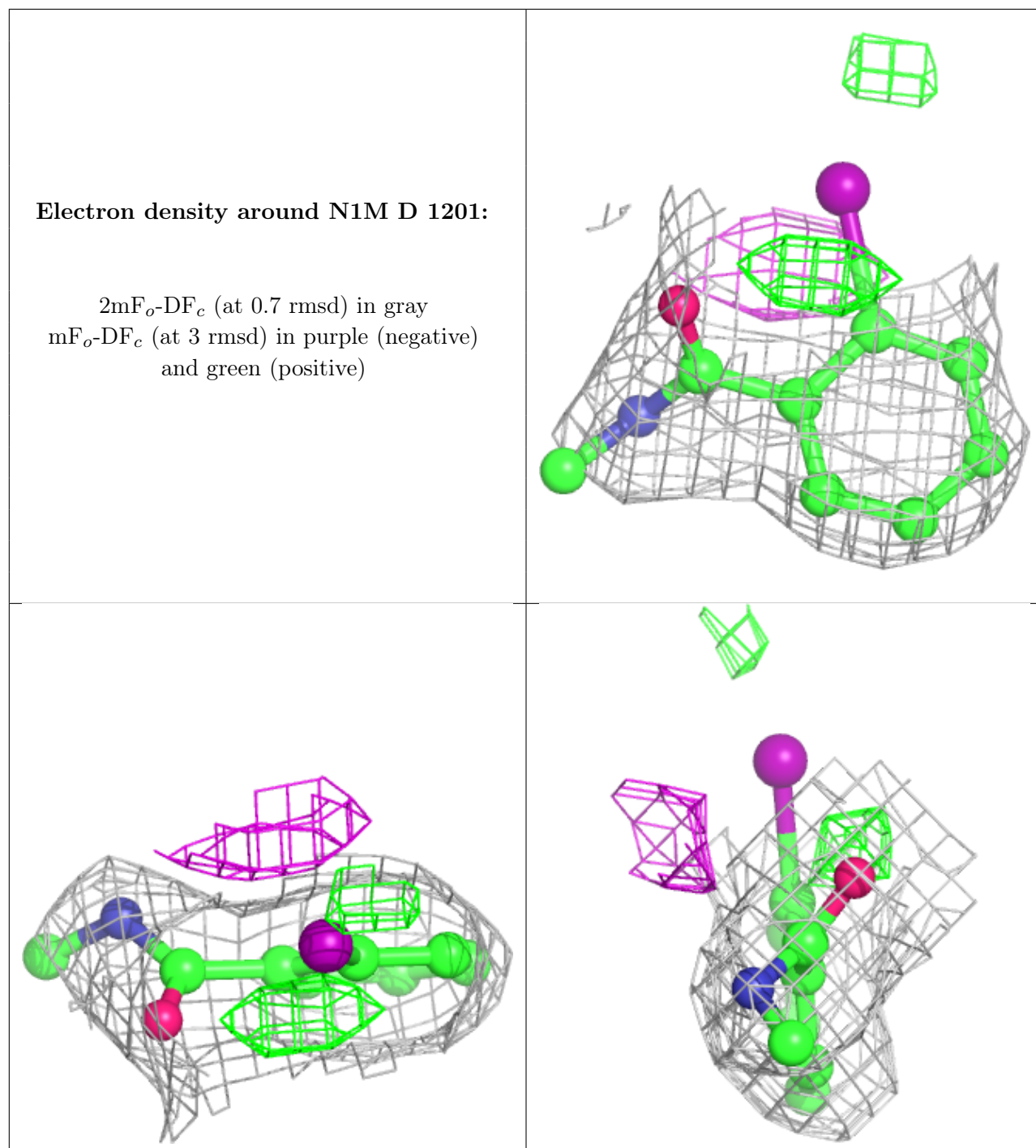
$2mF_o-DF_c$  (at 0.7 rmsd) in gray  
 $mF_o-DF_c$  (at 3 rmsd) in purple (negative)  
and green (positive)

**Electron density around HEM C 1305:**

$2mF_o-DF_c$  (at 0.7 rmsd) in gray  
 $mF_o-DF_c$  (at 3 rmsd) in purple (negative)  
and green (positive)







## 6.5 Other polymers [i](#)

There are no such residues in this entry.