



# Full wwPDB X-ray Structure Validation Report ⓘ

Mar 25, 2024 – 06:07 PM EDT

PDB ID : 2A9N  
Title : A Mutation Designed to Alter Crystal Packing Permits Structural Analysis of a Tight-binding Fluorescein-scFv complex  
Authors : Cambillau, C.; Spinelli, S.; Honegger, A.; Pluckthun, A.  
Deposited on : 2005-07-12  
Resolution : 3.00 Å(reported)

This is a Full wwPDB X-ray Structure Validation Report for a publicly released PDB entry.

We welcome your comments at [validation@mail.wwpdb.org](mailto:validation@mail.wwpdb.org)

A user guide is available at

<https://www.wwpdb.org/validation/2017/XrayValidationReportHelp>

with specific help available everywhere you see the ⓘ symbol.

The types of validation reports are described at

<http://www.wwpdb.org/validation/2017/FAQs#types>.

---

The following versions of software and data (see [references ⓘ](#)) were used in the production of this report:

MolProbity : 4.02b-467  
Mogul : 1.8.5 (274361), CSD as541be (2020)  
Xtriage (Phenix) : 1.13  
EDS : 2.36.1  
buster-report : 1.1.7 (2018)  
Percentile statistics : 20191225.v01 (using entries in the PDB archive December 25th 2019)  
Refmac : 5.8.0158  
CCP4 : 7.0.044 (Gargrove)  
Ideal geometry (proteins) : Engh & Huber (2001)  
Ideal geometry (DNA, RNA) : Parkinson et al. (1996)  
Validation Pipeline (wwPDB-VP) : 2.36.1

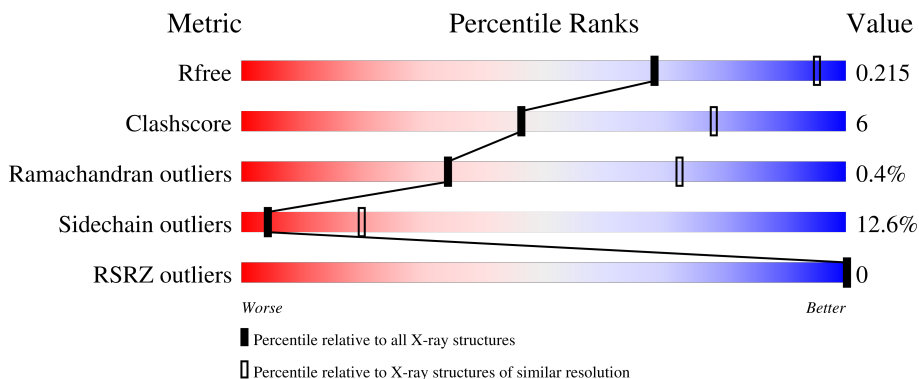
# 1 Overall quality at a glance

The following experimental techniques were used to determine the structure:

*X-RAY DIFFRACTION*

The reported resolution of this entry is 3.00 Å.

Percentile scores (ranging between 0-100) for global validation metrics of the entry are shown in the following graphic. The table shows the number of entries on which the scores are based.



Metric	Whole archive (#Entries)	Similar resolution (#Entries, resolution range(Å))
$R_{free}$	130704	2092 (3.00-3.00)
Clashscore	141614	2416 (3.00-3.00)
Ramachandran outliers	138981	2333 (3.00-3.00)
Sidechain outliers	138945	2336 (3.00-3.00)
RSRZ outliers	127900	1990 (3.00-3.00)

The table below summarises the geometric issues observed across the polymeric chains and their fit to the electron density. The red, orange, yellow and green segments of the lower bar indicate the fraction of residues that contain outliers for  $\geq 3$ , 2, 1 and 0 types of geometric quality criteria respectively. A grey segment represents the fraction of residues that are not modelled. The numeric value for each fraction is indicated below the corresponding segment, with a dot representing fractions  $\leq 5\%$ . The upper red bar (where present) indicates the fraction of residues that have poor fit to the electron density. The numeric value is given above the bar.

Mol	Chain	Length	Quality of chain
1	A	264	 70% 15% • 11%
1	B	264	 65% 21% • 11%

## 2 Entry composition [i](#)

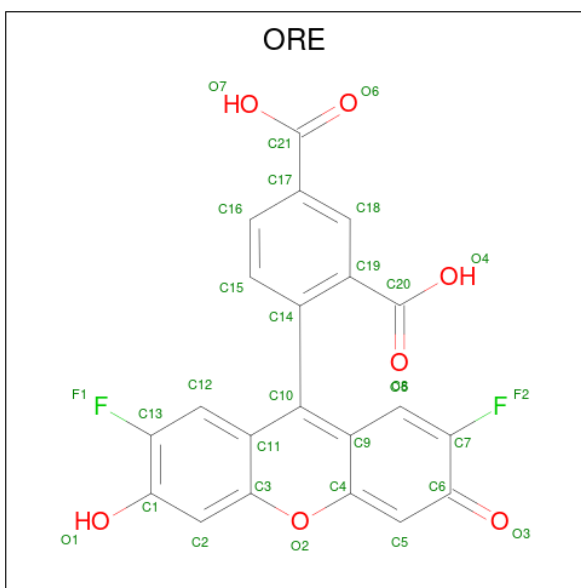
There are 2 unique types of molecules in this entry. The entry contains 3589 atoms, of which 0 are hydrogens and 0 are deuteriums.

In the tables below, the ZeroOcc column contains the number of atoms modelled with zero occupancy, the AltConf column contains the number of residues with at least one atom in alternate conformation and the Trace column contains the number of residues modelled with at most 2 atoms.

- Molecule 1 is a protein called fluorescein-scfv.

Mol	Chain	Residues	Atoms					ZeroOcc	AltConf	Trace
			Total	C	N	O	S			
1	A	235	Total	C	N	O	S	0	0	0
			1764	1103	302	351	8			
1	B	235	Total	C	N	O	S	0	0	0
			1765	1104	302	351	8			

- Molecule 2 is 4-(2,7-DIFLUORO-6-HYDROXY-3-OXO-3H-XANTHEN-9-YL)ISOPHTHALIC ACID (three-letter code: ORE) (formula: C<sub>21</sub>H<sub>10</sub>F<sub>2</sub>O<sub>7</sub>).



Mol	Chain	Residues	Atoms				ZeroOcc	AltConf
			Total	C	F	O		
2	A	1	Total	C	F	O	0	0
			30	21	2	7		
2	B	1	Total	C	F	O	0	0
			30	21	2	7		



## 4 Data and refinement statistics

Property	Value	Source
Space group	P 21 21 2	Depositor
Cell constants a, b, c, $\alpha$ , $\beta$ , $\gamma$	81.38Å 100.46Å 61.75Å 90.00° 90.00° 90.00°	Depositor
Resolution (Å)	18.00 – 3.00 28.87 – 3.00	Depositor EDS
% Data completeness (in resolution range)	96.4 (18.00-3.00) 96.2 (28.87-3.00)	Depositor EDS
$R_{merge}$	(Not available)	Depositor
$R_{sym}$	(Not available)	Depositor
$\langle I/\sigma(I) \rangle$ <sup>1</sup>	2.45 (at 3.00Å)	Xtrriage
Refinement program	REFMAC 5.1.24	Depositor
R, $R_{free}$	0.217 , 0.266 0.209 , 0.215	Depositor DCC
$R_{free}$ test set	1049 reflections (10.28%)	wwPDB-VP
Wilson B-factor (Å <sup>2</sup> )	51.1	Xtrriage
Anisotropy	0.616	Xtrriage
Bulk solvent $k_{sol}$ (e/Å <sup>3</sup> ), $B_{sol}$ (Å <sup>2</sup> )	0.29 , 10.9	EDS
L-test for twinning <sup>2</sup>	$\langle  L  \rangle = 0.49$ , $\langle L^2 \rangle = 0.32$	Xtrriage
Estimated twinning fraction	No twinning to report.	Xtrriage
$F_o, F_c$ correlation	0.92	EDS
Total number of atoms	3589	wwPDB-VP
Average B, all atoms (Å <sup>2</sup> )	34.0	wwPDB-VP

Xtrriage's analysis on translational NCS is as follows: *The largest off-origin peak in the Patterson function is 6.98% of the height of the origin peak. No significant pseudotranslation is detected.*

<sup>1</sup>Intensities estimated from amplitudes.

<sup>2</sup>Theoretical values of  $\langle |L| \rangle$ ,  $\langle L^2 \rangle$  for acentric reflections are 0.5, 0.333 respectively for untwinned datasets, and 0.375, 0.2 for perfectly twinned datasets.

## 5 Model quality [i](#)

### 5.1 Standard geometry [i](#)

Bond lengths and bond angles in the following residue types are not validated in this section: ORE

The Z score for a bond length (or angle) is the number of standard deviations the observed value is removed from the expected value. A bond length (or angle) with  $|Z| > 5$  is considered an outlier worth inspection. RMSZ is the root-mean-square of all Z scores of the bond lengths (or angles).

Mol	Chain	Bond lengths		Bond angles	
		RMSZ	# Z  >5	RMSZ	# Z  >5
1	A	0.54	0/1804	0.78	6/2446 (0.2%)
1	B	0.55	0/1805	0.80	8/2448 (0.3%)
All	All	0.54	0/3609	0.79	14/4894 (0.3%)

There are no bond length outliers.

All (14) bond angle outliers are listed below:

Mol	Chain	Res	Type	Atoms	Z	Observed(°)	Ideal(°)
1	A	208	ASP	CB-CG-OD2	7.10	124.69	118.30
1	A	218	ASP	CB-CG-OD2	6.56	124.21	118.30
1	B	90	ASP	CB-CG-OD2	6.46	124.12	118.30
1	A	176	ASP	CB-CG-OD2	6.38	124.04	118.30
1	B	73	ASP	CB-CG-OD2	6.37	124.03	118.30
1	A	62	ASP	CB-CG-OD2	6.31	123.97	118.30
1	B	208	ASP	CB-CG-OD2	6.20	123.88	118.30
1	B	176	ASP	CB-CG-OD2	5.89	123.60	118.30
1	A	102	ASP	CB-CG-OD2	5.78	123.50	118.30
1	B	115	ASP	CB-CG-OD2	5.64	123.37	118.30
1	B	211	ASP	CB-CG-OD2	5.58	123.33	118.30
1	B	186	ASP	CB-CG-OD2	5.56	123.31	118.30
1	B	62	ASP	CB-CG-OD2	5.47	123.22	118.30
1	A	73	ASP	CB-CG-OD2	5.35	123.12	118.30

There are no chirality outliers.

There are no planarity outliers.

## 5.2 Too-close contacts

In the following table, the Non-H and H(model) columns list the number of non-hydrogen atoms and hydrogen atoms in the chain respectively. The H(added) column lists the number of hydrogen atoms added and optimized by MolProbity. The Clashes column lists the number of clashes within the asymmetric unit, whereas Symm-Clashes lists symmetry-related clashes.

Mol	Chain	Non-H	H(model)	H(added)	Clashes	Symm-Clashes
1	A	1764	0	1675	19	0
1	B	1765	0	1674	26	0
2	A	30	0	7	3	0
2	B	30	0	7	3	0
All	All	3589	0	3363	44	0

The all-atom clashscore is defined as the number of clashes found per 1000 atoms (including hydrogen atoms). The all-atom clashscore for this structure is 6.

All (44) close contacts within the same asymmetric unit are listed below, sorted by their clash magnitude.

Atom-1	Atom-2	Interatomic distance (Å)	Clash overlap (Å)
1:B:119:GLN:HE21	1:B:119:GLN:N	1.77	0.81
1:A:151:THR:O	1:A:156:ASN:ND2	2.23	0.71
1:B:119:GLN:HE21	1:B:119:GLN:H	1.33	0.71
1:B:159:VAL:HG12	1:B:177:VAL:HG22	1.78	0.65
1:B:162:TYR:CE2	1:B:172:LEU:HD23	2.33	0.64
1:B:119:GLN:N	1:B:119:GLN:NE2	2.47	0.63
1:A:47:TRP:NE1	2:A:301:ORE:O3	2.34	0.59
1:A:131:GLN:HE21	1:A:227:GLY:HA3	1.68	0.59
1:A:104:SER:OG	1:A:105:GLY:N	2.37	0.57
1:A:10:ASN:HD22	1:A:11:LEU:H	1.52	0.56
1:B:10:ASN:HD22	1:B:11:LEU:H	1.55	0.55
1:B:10:ASN:HD22	1:B:11:LEU:N	2.05	0.55
1:B:128:VAL:HG11	1:B:228:THR:HG23	1.91	0.51
1:A:18:LEU:HD23	1:A:19:ARG:N	2.26	0.50
1:B:217:TRP:CE2	2:B:301:ORE:H15	2.47	0.50
1:B:48:VAL:HG13	1:B:64:VAL:HG11	1.95	0.49
1:B:187:ARG:HD2	1:B:202:SER:O	2.13	0.49
1:A:218:ASP:OD2	1:A:221:LEU:HB2	2.14	0.48
1:B:4:LEU:O	1:B:119:GLN:NE2	2.41	0.48
1:B:82:GLN:HE22	1:B:84:ASN:ND2	2.12	0.47
1:B:14:PRO:HD3	1:B:126:SER:OG	2.15	0.47
1:A:12:VAL:HG11	1:A:18:LEU:HD12	1.97	0.47
1:B:209:GLU:O	1:B:210:ALA:HB2	2.16	0.46

*Continued on next page...*

Continued from previous page...

Atom-1	Atom-2	Interatomic distance (Å)	Clash overlap (Å)
1:B:106:TYR:CE1	1:B:109:HIS:CD2	3.04	0.46
1:B:51:LEU:HG	1:B:70:ILE:HD11	1.98	0.45
1:A:187:ARG:HB2	1:A:202:SER:O	2.17	0.45
1:B:8:GLY:O	1:B:18:LEU:HD21	2.18	0.44
1:A:59:HIS:N	1:A:59:HIS:HD1	2.15	0.44
1:A:153:ASN:HD22	1:A:154:ILE:H	1.65	0.44
1:B:83:MET:HB3	1:B:86:LEU:HD21	2.00	0.44
1:B:161:TRP:CZ3	1:B:214:CYS:HB3	2.53	0.44
1:A:124:THR:HG21	1:B:124:THR:HG21	2.01	0.43
1:A:131:GLN:HE22	1:A:213:TYR:HA	1.84	0.43
1:A:162:TYR:CE2	1:A:172:LEU:HD23	2.53	0.43
1:A:217:TRP:CZ2	2:A:301:ORE:H15	2.54	0.43
1:B:112:SER:HA	2:B:301:ORE:C5	2.49	0.43
1:A:8:GLY:O	1:A:18:LEU:HD21	2.18	0.43
1:B:217:TRP:CZ2	2:B:301:ORE:H15	2.54	0.42
1:B:11:LEU:HD13	1:B:12:VAL:N	2.35	0.42
1:A:60:TYR:HB2	1:A:65:LYS:HG2	2.01	0.42
1:A:217:TRP:CE2	2:A:301:ORE:H15	2.54	0.41
1:B:205:GLN:O	1:B:234:VAL:HG21	2.21	0.41
1:A:135:VAL:HG23	1:A:232:LEU:HD12	2.02	0.41
1:B:215:ALA:HB1	1:B:224:PHE:CE2	2.57	0.40

There are no symmetry-related clashes.

## 5.3 Torsion angles [i](#)

### 5.3.1 Protein backbone [i](#)

In the following table, the Percentiles column shows the percent Ramachandran outliers of the chain as a percentile score with respect to all X-ray entries followed by that with respect to entries of similar resolution.

The Analysed column shows the number of residues for which the backbone conformation was analysed, and the total number of residues.

Mol	Chain	Analysed	Favoured	Allowed	Outliers	Percentiles	
1	A	231/264 (88%)	210 (91%)	20 (9%)	1 (0%)	34	72
1	B	231/264 (88%)	214 (93%)	16 (7%)	1 (0%)	34	72
All	All	462/528 (88%)	424 (92%)	36 (8%)	2 (0%)	34	72



All (2) Ramachandran outliers are listed below:

Mol	Chain	Res	Type
1	B	210	ALA
1	A	141	GLN

### 5.3.2 Protein sidechains [i](#)

In the following table, the Percentiles column shows the percent sidechain outliers of the chain as a percentile score with respect to all X-ray entries followed by that with respect to entries of similar resolution.

The Analysed column shows the number of residues for which the sidechain conformation was analysed, and the total number of residues.

Mol	Chain	Analysed	Rotameric	Outliers	Percentiles	
1	A	190/206 (92%)	168 (88%)	22 (12%)	5	23
1	B	190/206 (92%)	164 (86%)	26 (14%)	3	17
All	All	380/412 (92%)	332 (87%)	48 (13%)	4	20

All (48) residues with a non-rotameric sidechain are listed below:

Mol	Chain	Res	Type
1	A	10	ASN
1	A	11	LEU
1	A	13	GLN
1	A	19	ARG
1	A	21	SER
1	A	29	PHE
1	A	38	ARG
1	A	59	HIS
1	A	74	ASN
1	A	82	GLN
1	A	93	VAL
1	A	104	SER
1	A	112	SER
1	A	119	GLN
1	A	150	SER
1	A	153	ASN
1	A	154	ILE
1	A	180	ARG
1	A	189	SER
1	A	198	SER
1	A	200	ASP

*Continued on next page...*

*Continued from previous page...*

<b>Mol</b>	<b>Chain</b>	<b>Res</b>	<b>Type</b>
1	A	221	LEU
1	B	7	SER
1	B	10	ASN
1	B	18	LEU
1	B	29	PHE
1	B	38	ARG
1	B	56	SER
1	B	70	ILE
1	B	76	LYS
1	B	82	GLN
1	B	93	VAL
1	B	106	TYR
1	B	119	GLN
1	B	133	SER
1	B	135	VAL
1	B	142	LYS
1	B	150	SER
1	B	151	THR
1	B	168	LYS
1	B	172	LEU
1	B	180	ARG
1	B	189	SER
1	B	198	SER
1	B	200	ASP
1	B	228	THR
1	B	233	THR
1	B	235	LEU

Sometimes sidechains can be flipped to improve hydrogen bonding and reduce clashes. All (18) such sidechains are listed below:

<b>Mol</b>	<b>Chain</b>	<b>Res</b>	<b>Type</b>
1	A	3	GLN
1	A	10	ASN
1	A	13	GLN
1	A	82	GLN
1	A	84	ASN
1	A	109	HIS
1	A	131	GLN
1	A	153	ASN
1	A	195	ASN
1	B	3	GLN
1	B	10	ASN

*Continued on next page...*

*Continued from previous page...*

Mol	Chain	Res	Type
1	B	84	ASN
1	B	109	HIS
1	B	119	GLN
1	B	131	GLN
1	B	141	GLN
1	B	195	ASN
1	B	205	GLN

### 5.3.3 RNA [i](#)

There are no RNA molecules in this entry.

### 5.4 Non-standard residues in protein, DNA, RNA chains [i](#)

There are no non-standard protein/DNA/RNA residues in this entry.

### 5.5 Carbohydrates [i](#)

There are no monosaccharides in this entry.

### 5.6 Ligand geometry [i](#)

2 ligands are modelled in this entry.

In the following table, the Counts columns list the number of bonds (or angles) for which Mogul statistics could be retrieved, the number of bonds (or angles) that are observed in the model and the number of bonds (or angles) that are defined in the Chemical Component Dictionary. The Link column lists molecule types, if any, to which the group is linked. The Z score for a bond length (or angle) is the number of standard deviations the observed value is removed from the expected value. A bond length (or angle) with  $|Z| > 2$  is considered an outlier worth inspection. RMSZ is the root-mean-square of all Z scores of the bond lengths (or angles).

Mol	Type	Chain	Res	Link	Bond lengths			Bond angles		
					Counts	RMSZ	$\# Z  > 2$	Counts	RMSZ	$\# Z  > 2$
2	ORE	A	301	-	32,33,33	3.90	14 (43%)	37,50,50	1.76	10 (27%)
2	ORE	B	301	-	32,33,33	3.91	15 (46%)	37,50,50	1.53	4 (10%)

In the following table, the Chirals column lists the number of chiral outliers, the number of chiral centers analysed, the number of these observed in the model and the number defined in the Chemical Component Dictionary. Similar counts are reported in the Torsion and Rings columns.

'-' means no outliers of that kind were identified.

Mol	Type	Chain	Res	Link	Chirals	Torsions	Rings
2	ORE	A	301	-	-	2/8/16/16	0/4/4/4
2	ORE	B	301	-	-	4/8/16/16	0/4/4/4

All (29) bond length outliers are listed below:

Mol	Chain	Res	Type	Atoms	Z	Observed(Å)	Ideal(Å)
2	A	301	ORE	C1-C13	12.30	1.49	1.39
2	B	301	ORE	O3-C6	11.47	1.43	1.23
2	B	301	ORE	C1-C13	9.70	1.47	1.39
2	A	301	ORE	O3-C6	9.27	1.39	1.23
2	B	301	ORE	C7-C6	7.78	1.49	1.41
2	A	301	ORE	C5-C6	7.38	1.52	1.37
2	B	301	ORE	C5-C6	7.23	1.51	1.37
2	A	301	ORE	C7-C6	7.04	1.49	1.41
2	A	301	ORE	O2-C4	5.20	1.44	1.36
2	B	301	ORE	C11-C3	5.01	1.48	1.41
2	A	301	ORE	C11-C3	4.85	1.48	1.41
2	B	301	ORE	O2-C4	4.69	1.44	1.36
2	A	301	ORE	C8-C9	4.31	1.48	1.41
2	B	301	ORE	C8-C9	3.87	1.48	1.41
2	A	301	ORE	C9-C10	-3.54	1.34	1.43
2	B	301	ORE	C19-C14	3.36	1.49	1.43
2	B	301	ORE	C9-C10	-3.32	1.35	1.43
2	B	301	ORE	C9-C4	3.23	1.45	1.41
2	B	301	ORE	C12-C13	3.18	1.40	1.35
2	A	301	ORE	C19-C14	3.17	1.48	1.43
2	B	301	ORE	F2-C7	-3.03	1.30	1.36
2	B	301	ORE	C11-C10	3.01	1.51	1.43
2	A	301	ORE	F2-C7	-2.82	1.31	1.36
2	A	301	ORE	C9-C4	2.80	1.45	1.41
2	A	301	ORE	C2-C1	2.44	1.39	1.37
2	A	301	ORE	C11-C10	2.44	1.49	1.43
2	B	301	ORE	O1-C1	-2.24	1.31	1.36
2	A	301	ORE	C12-C13	2.09	1.38	1.35
2	B	301	ORE	C5-C4	-2.02	1.33	1.37

All (14) bond angle outliers are listed below:

Mol	Chain	Res	Type	Atoms	Z	Observed(°)	Ideal(°)
2	B	301	ORE	C7-C6-C5	-6.07	112.86	118.56
2	A	301	ORE	C7-C6-C5	-5.07	113.80	118.56

*Continued on next page...*

Continued from previous page...

Mol	Chain	Res	Type	Atoms	Z	Observed(°)	Ideal(°)
2	A	301	ORE	O2-C3-C2	3.86	120.61	116.03
2	A	301	ORE	C12-C11-C3	3.33	120.14	116.39
2	B	301	ORE	O2-C3-C2	2.94	119.52	116.03
2	A	301	ORE	O7-C21-C17	2.61	121.63	114.85
2	A	301	ORE	O2-C3-C11	-2.48	118.81	121.20
2	A	301	ORE	C5-C4-C9	-2.36	120.43	123.05
2	A	301	ORE	O6-C21-C17	-2.31	115.28	121.45
2	B	301	ORE	F1-C13-C12	2.24	123.43	120.47
2	A	301	ORE	C2-C3-C11	-2.23	120.58	123.05
2	A	301	ORE	O2-C4-C5	2.13	118.55	116.03
2	B	301	ORE	C2-C3-C11	-2.09	120.73	123.05
2	A	301	ORE	C1-C2-C3	-2.08	119.43	121.36

There are no chirality outliers.

All (6) torsion outliers are listed below:

Mol	Chain	Res	Type	Atoms
2	B	301	ORE	C14-C19-C20-O4
2	B	301	ORE	C18-C19-C20-O5
2	B	301	ORE	C18-C19-C20-O4
2	B	301	ORE	C14-C19-C20-O5
2	A	301	ORE	C14-C19-C20-O4
2	A	301	ORE	C14-C19-C20-O5

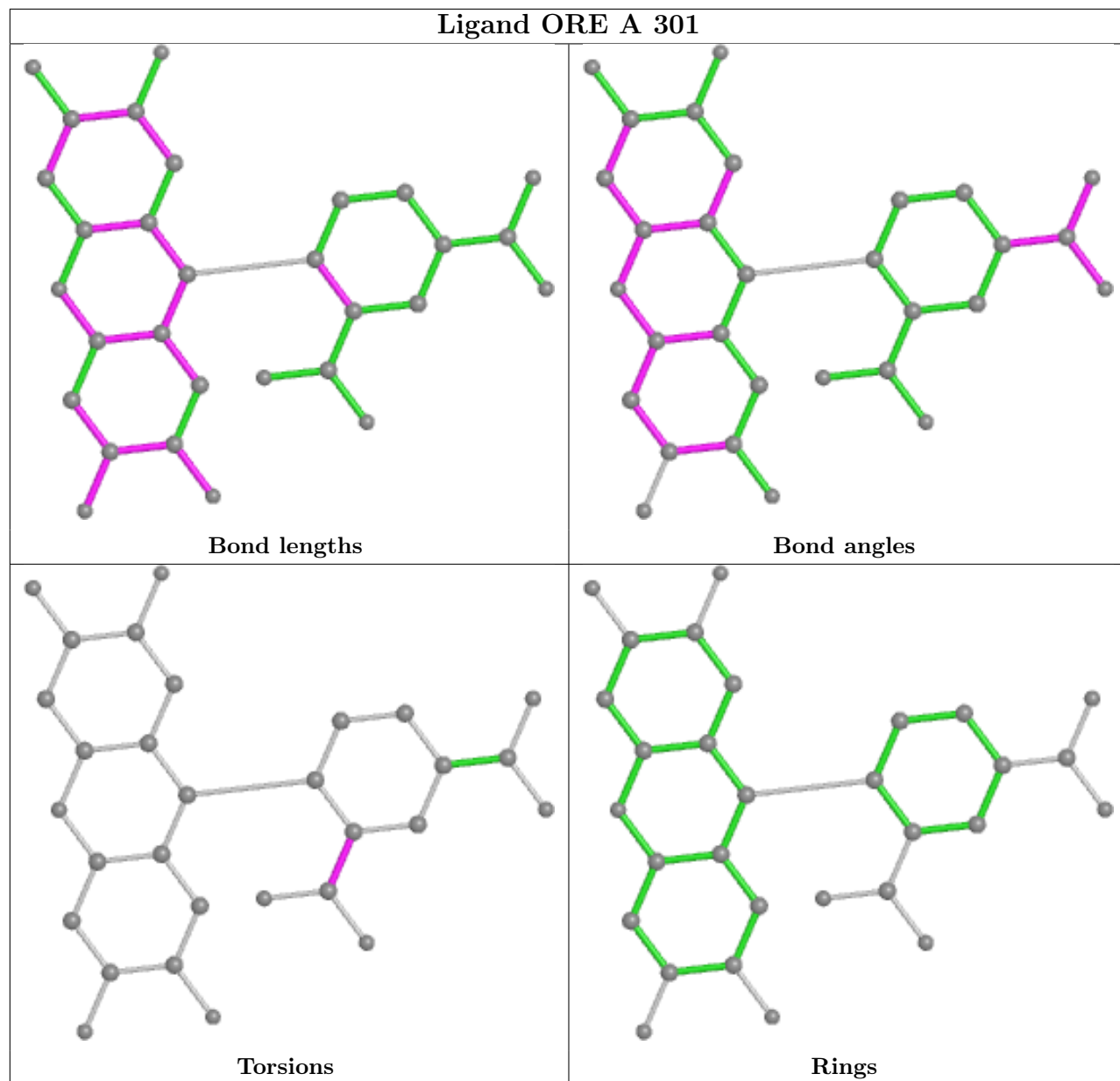
There are no ring outliers.

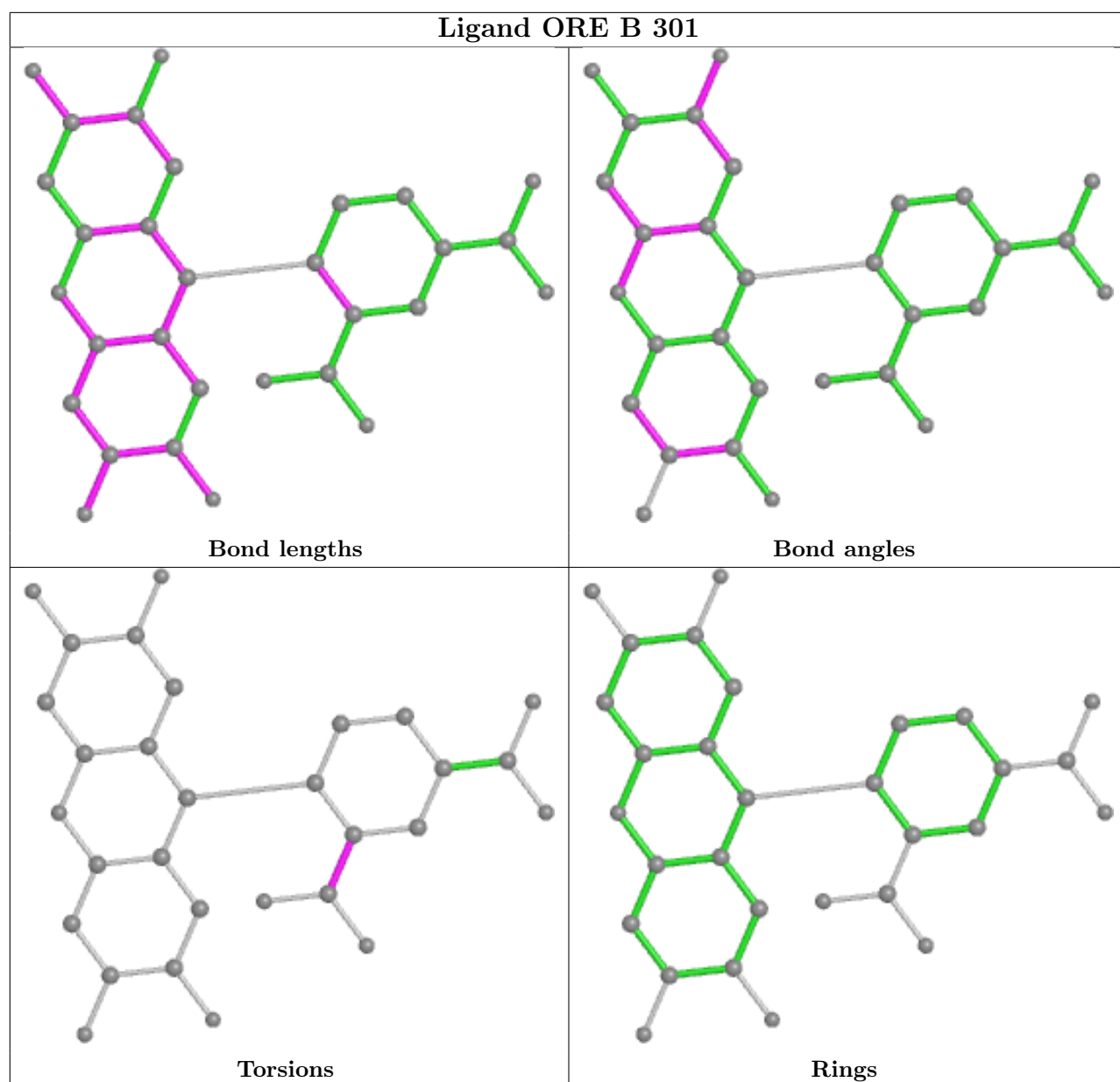
2 monomers are involved in 6 short contacts:

Mol	Chain	Res	Type	Clashes	Symm-Clashes
2	A	301	ORE	3	0
2	B	301	ORE	3	0

The following is a two-dimensional graphical depiction of Mogul quality analysis of bond lengths, bond angles, torsion angles, and ring geometry for all instances of the Ligand of Interest. In addition, ligands with molecular weight > 250 and outliers as shown on the validation Tables will also be included. For torsion angles, if less than 5% of the Mogul distribution of torsion angles is within 10 degrees of the torsion angle in question, then that torsion angle is considered an outlier. Any bond that is central to one or more torsion angles identified as an outlier by Mogul will be highlighted in the graph. For rings, the root-mean-square deviation (RMSD) between the ring in question and similar rings identified by Mogul is calculated over all ring torsion angles. If the average RMSD is greater than 60 degrees and the minimal RMSD between the ring in question and any Mogul-identified rings is also greater than 60 degrees, then that ring is considered an outlier. The outliers are highlighted in purple. The color gray indicates Mogul did not find sufficient

equivalents in the CSD to analyse the geometry.





## 5.7 Other polymers [i](#)

There are no such residues in this entry.

## 5.8 Polymer linkage issues [i](#)

There are no chain breaks in this entry.

## 6 Fit of model and data [i](#)

### 6.1 Protein, DNA and RNA chains [i](#)

In the following table, the column labelled ‘#RSRZ> 2’ contains the number (and percentage) of RSRZ outliers, followed by percent RSRZ outliers for the chain as percentile scores relative to all X-ray entries and entries of similar resolution. The OWAB column contains the minimum, median, 95<sup>th</sup> percentile and maximum values of the occupancy-weighted average B-factor per residue. The column labelled ‘Q< 0.9’ lists the number of (and percentage) of residues with an average occupancy less than 0.9.

Mol	Chain	Analysed	<RSRZ>	#RSRZ>2	OWAB(Å <sup>2</sup> )	Q<0.9
1	A	235/264 (89%)	-0.39	0 100 100	32, 35, 37, 38	0
1	B	235/264 (89%)	-0.43	0 100 100	31, 35, 37, 39	0
All	All	470/528 (89%)	-0.41	0 100 100	31, 35, 37, 39	0

There are no RSRZ outliers to report.

### 6.2 Non-standard residues in protein, DNA, RNA chains [i](#)

There are no non-standard protein/DNA/RNA residues in this entry.

### 6.3 Carbohydrates [i](#)

There are no monosaccharides in this entry.

### 6.4 Ligands [i](#)

In the following table, the Atoms column lists the number of modelled atoms in the group and the number defined in the chemical component dictionary. The B-factors column lists the minimum, median, 95<sup>th</sup> percentile and maximum values of B factors of atoms in the group. The column labelled ‘Q< 0.9’ lists the number of atoms with occupancy less than 0.9.

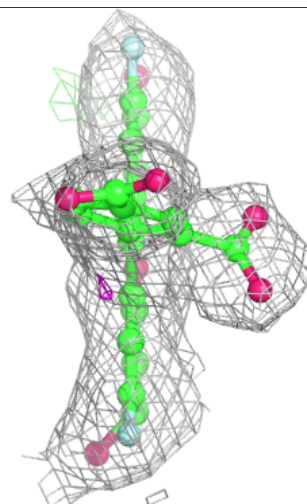
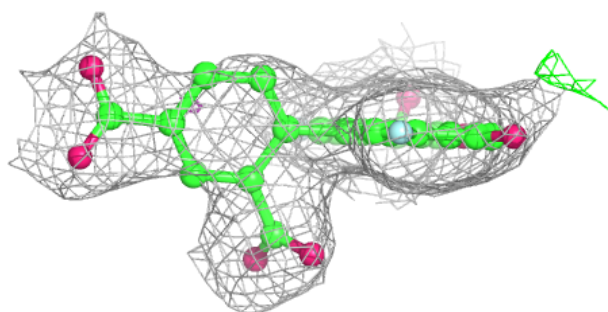
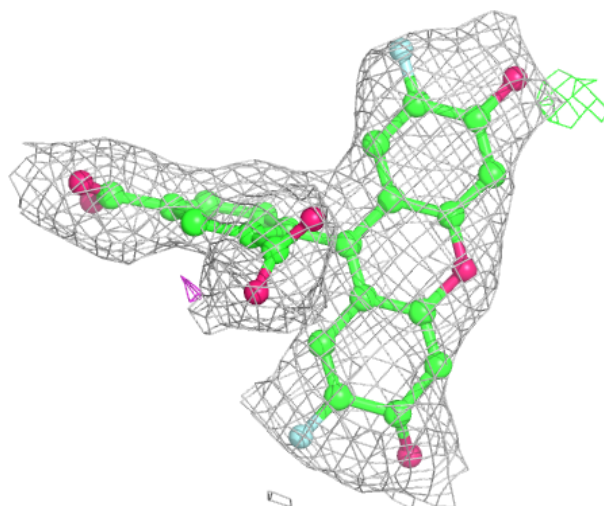
Mol	Type	Chain	Res	Atoms	RSCC	RSR	B-factors(Å <sup>2</sup> )	Q<0.9
2	ORE	A	301	30/30	0.93	0.17	33,35,36,36	0
2	ORE	B	301	30/30	0.97	0.15	29,32,33,34	0

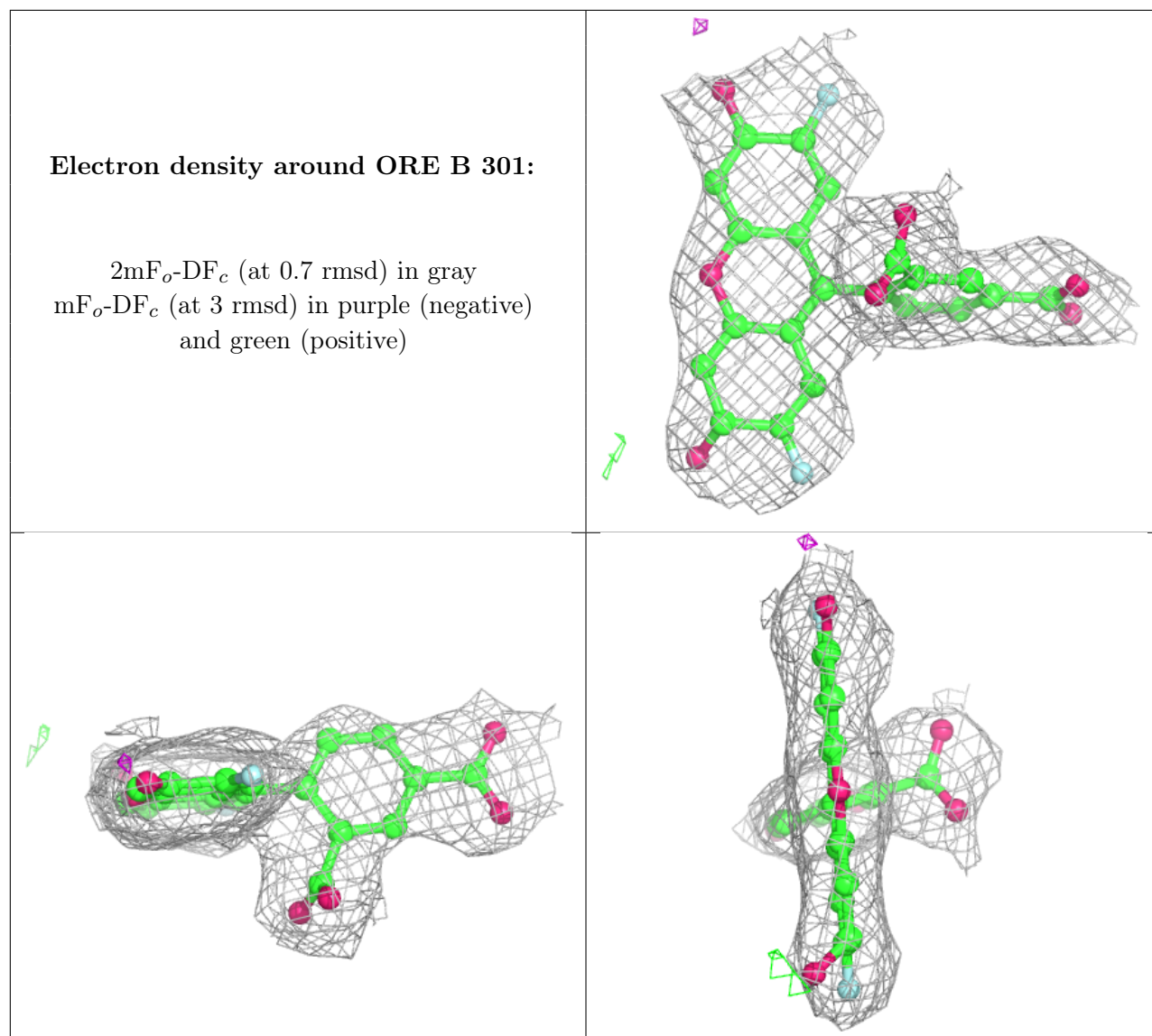
The following is a graphical depiction of the model fit to experimental electron density of all instances of the Ligand of Interest. In addition, ligands with molecular weight > 250 and outliers as shown on the geometry validation Tables will also be included. Each fit is shown from different orientation to approximate a three-dimensional view.



**Electron density around ORE A 301:**

$2mF_o-DF_c$  (at 0.7 rmsd) in gray  
 $mF_o-DF_c$  (at 3 rmsd) in purple (negative)  
and green (positive)





## 6.5 Other polymers [\(i\)](#)

There are no such residues in this entry.