



Full wwPDB X-ray Structure Validation Report ⓘ

May 13, 2020 – 07:08 am BST

PDB ID : 4A7U
Title : Structure of human I113T SOD1 complexed with adrenaline in the p21 space group.
Authors : Wright, G.S.A.; Kershaw, N.M.; Antonyuk, S.V.; Strange, R.W.; ONeil, P.M.; Hasnain, S.S.
Deposited on : 2011-11-14
Resolution : 0.98 Å(reported)

This is a Full wwPDB X-ray Structure Validation Report for a publicly released PDB entry.

We welcome your comments at validation@mail.wwpdb.org

A user guide is available at

<https://www.wwpdb.org/validation/2017/XrayValidationReportHelp>

with specific help available everywhere you see the ⓘ symbol.

The following versions of software and data (see [references ⓘ](#)) were used in the production of this report:

MolProbity : 4.02b-467
Mogul : 1.8.5 (274361), CSD as541be (2020)
Xtriage (Phenix) : 1.13
EDS : 2.11
Percentile statistics : 20191225.v01 (using entries in the PDB archive December 25th 2019)
Refmac : 5.8.0158
CCP4 : 7.0.044 (Gargrove)
Ideal geometry (proteins) : Engh & Huber (2001)
Ideal geometry (DNA, RNA) : Parkinson et al. (1996)
Validation Pipeline (wwPDB-VP) : 2.11

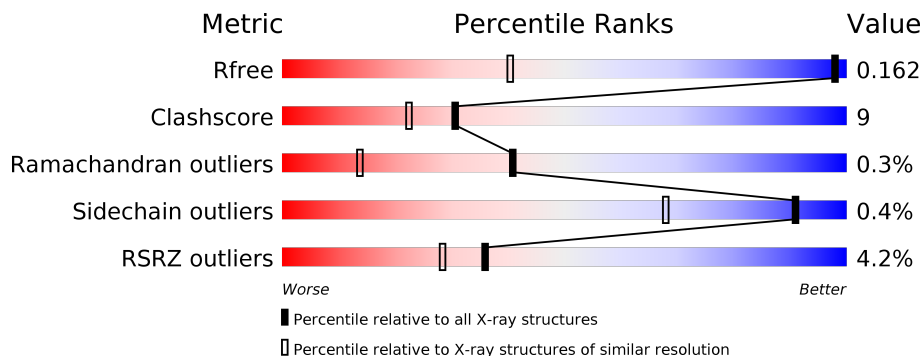
1 Overall quality at a glance

The following experimental techniques were used to determine the structure:

X-RAY DIFFRACTION

The reported resolution of this entry is 0.98 Å.

Percentile scores (ranging between 0-100) for global validation metrics of the entry are shown in the following graphic. The table shows the number of entries on which the scores are based.



Metric	Whole archive (#Entries)	Similar resolution (#Entries, resolution range(Å))
R_{free}	130704	1166 (1.06-0.90)
Clashscore	141614	1241 (1.06-0.90)
Ramachandran outliers	138981	1159 (1.06-0.90)
Sidechain outliers	138945	1161 (1.06-0.90)
RSRZ outliers	127900	1132 (1.06-0.90)

The table below summarises the geometric issues observed across the polymeric chains and their fit to the electron density. The red, orange, yellow and green segments on the lower bar indicate the fraction of residues that contain outliers for ≥ 3 , 2, 1 and 0 types of geometric quality criteria respectively. A grey segment represents the fraction of residues that are not modelled. The numeric value for each fraction is indicated below the corresponding segment, with a dot representing fractions $\leq 5\%$. The upper red bar (where present) indicates the fraction of residues that have poor fit to the electron density. The numeric value is given above the bar.

Mol	Chain	Length	Quality of chain
1	A	153	
1	F	153	

The following table lists non-polymeric compounds, carbohydrate monomers and non-standard residues in protein, DNA, RNA chains that are outliers for geometric or electron-density-fit criteria:

Mol	Type	Chain	Res	Chirality	Geometry	Clashes	Electron density
3	SO4	A	1160	-	-	X	-
3	SO4	F	1155	-	-	X	-
6	ACT	A	1159	-	-	X	-

2 Entry composition [i](#)

There are 7 unique types of molecules in this entry. The entry contains 2677 atoms, of which 0 are hydrogens and 0 are deuteriums.

In the tables below, the ZeroOcc column contains the number of atoms modelled with zero occupancy, the AltConf column contains the number of residues with at least one atom in alternate conformation and the Trace column contains the number of residues modelled with at most 2 atoms.

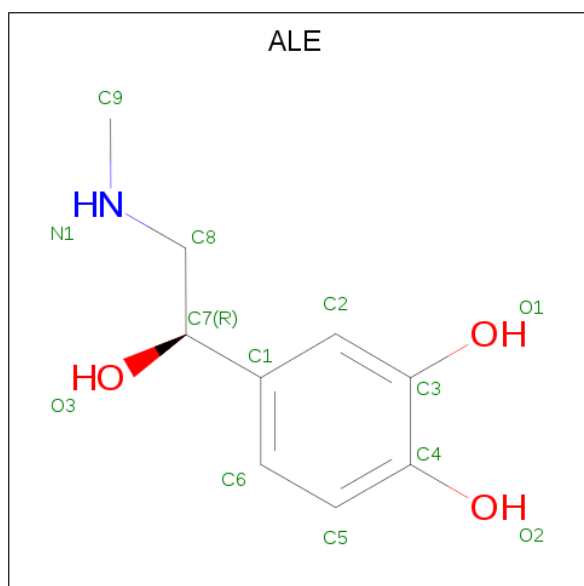
- Molecule 1 is a protein called SUPEROXIDE DISMUTASE [CU-ZN].

Mol	Chain	Residues	Atoms					ZeroOcc	AltConf	Trace
			Total	C	N	O	S			
1	A	153	1158	707	210	237	4	0	6	0
1	F	153	1182	717	214	247	4	0	10	0

There are 2 discrepancies between the modelled and reference sequences:

Chain	Residue	Modelled	Actual	Comment	Reference
A	113	THR	ILE	engineered mutation	UNP P00441
F	113	THR	ILE	engineered mutation	UNP P00441

- Molecule 2 is L-EPINEPHRINE (three-letter code: ALE) (formula: C₉H₁₃NO₃).



Mol	Chain	Residues	Atoms				ZeroOcc	AltConf
			Total	C	N	O		
2	A	1	13	9	1	3	0	0

Continued on next page...

Continued from previous page...

Mol	Chain	Residues	Atoms				ZeroOcc	AltConf
			Total	C	N	O		
2	A	1	13	9	1	3	0	0

- Molecule 3 is SULFATE ION (three-letter code: SO4) (formula: O₄S).



Mol	Chain	Residues	Atoms			ZeroOcc	AltConf
			Total	O	S		
3	A	1	5	4	1	0	0
3	A	1	5	4	1	0	0
3	F	1	5	4	1	0	0
3	F	1	5	4	1	0	0

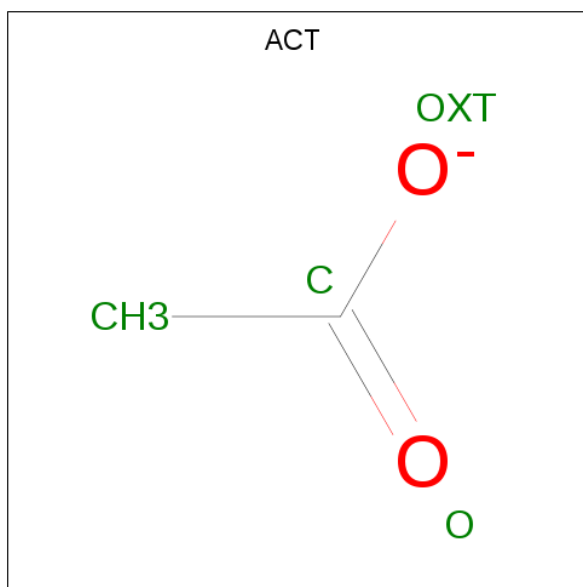
- Molecule 4 is COPPER (II) ION (three-letter code: CU) (formula: Cu).

Mol	Chain	Residues	Atoms		ZeroOcc	AltConf
			Total	Cu		
4	A	1	1	1	0	0
4	F	1	1	1	0	0

- Molecule 5 is ZINC ION (three-letter code: ZN) (formula: Zn).

Mol	Chain	Residues	Atoms	ZeroOcc	AltConf
5	A	1	Total Zn 1 1	0	0
5	F	1	Total Zn 1 1	0	0

- Molecule 6 is ACETATE ION (three-letter code: ACT) (formula: C₂H₃O₂).



Mol	Chain	Residues	Atoms	ZeroOcc	AltConf
6	A	1	Total C O 4 2 2	0	0

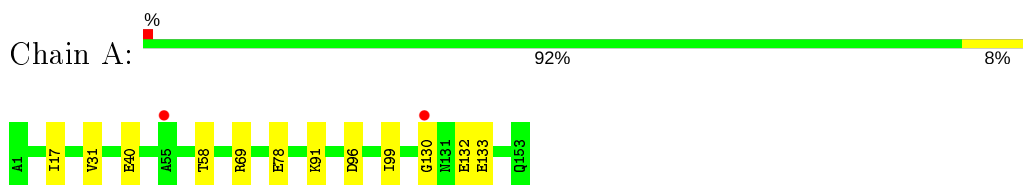
- Molecule 7 is water.

Mol	Chain	Residues	Atoms	ZeroOcc	AltConf
7	A	161	Total O 161 161	0	0
7	F	122	Total O 122 122	0	0

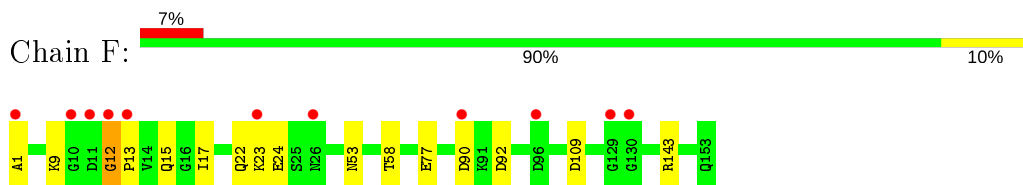
3 Residue-property plots [i](#)

These plots are drawn for all protein, RNA and DNA chains in the entry. The first graphic for a chain summarises the proportions of the various outlier classes displayed in the second graphic. The second graphic shows the sequence view annotated by issues in geometry and electron density. Residues are color-coded according to the number of geometric quality criteria for which they contain at least one outlier: green = 0, yellow = 1, orange = 2 and red = 3 or more. A red dot above a residue indicates a poor fit to the electron density ($RSRZ > 2$). Stretches of 2 or more consecutive residues without any outlier are shown as a green connector. Residues present in the sample, but not in the model, are shown in grey.

- Molecule 1: SUPEROXIDE DISMUTASE [CU-ZN]



- Molecule 1: SUPEROXIDE DISMUTASE [CU-ZN]



4 Data and refinement statistics

Property	Value	Source
Space group	P 1 21 1	Depositor
Cell constants a, b, c, α , β , γ	38.30Å 68.10Å 50.20Å 90.00° 104.70° 90.00°	Depositor
Resolution (Å)	37.05 – 0.98 37.05 – 0.90	Depositor EDS
% Data completeness (in resolution range)	97.0 (37.05-0.98) 84.3 (37.05-0.90)	Depositor EDS
R_{merge}	0.04	Depositor
R_{sym}	(Not available)	Depositor
$\langle I/\sigma(I) \rangle$ ¹	1.29 (at 0.90Å)	Xtrriage
Refinement program	REFMAC 5.6.0117	Depositor
R, R_{free}	0.138 , 0.153 0.145 , 0.162	Depositor DCC
R_{free} test set	7741 reflections (5.00%)	wwPDB-VP
Wilson B-factor (Å ²)	11.7	Xtrriage
Anisotropy	0.224	Xtrriage
Bulk solvent k_{sol} (e/Å ³), B_{sol} (Å ²)	0.38 , 48.5	EDS
L-test for twinning ²	$\langle L \rangle = 0.49$, $\langle L^2 \rangle = 0.32$	Xtrriage
Estimated twinning fraction	No twinning to report.	Xtrriage
F_o, F_c correlation	0.98	EDS
Total number of atoms	2677	wwPDB-VP
Average B, all atoms (Å ²)	16.0	wwPDB-VP

Xtrriage's analysis on translational NCS is as follows: *The largest off-origin peak in the Patterson function is 7.96% of the height of the origin peak. No significant pseudotranslation is detected.*

¹Intensities estimated from amplitudes.

²Theoretical values of $\langle |L| \rangle$, $\langle L^2 \rangle$ for acentric reflections are 0.5, 0.333 respectively for untwinned datasets, and 0.375, 0.2 for perfectly twinned datasets.

5 Model quality [i](#)

5.1 Standard geometry [i](#)

Bond lengths and bond angles in the following residue types are not validated in this section: ZN, ALE, SO4, CU, ACT

The Z score for a bond length (or angle) is the number of standard deviations the observed value is removed from the expected value. A bond length (or angle) with $|Z| > 5$ is considered an outlier worth inspection. RMSZ is the root-mean-square of all Z scores of the bond lengths (or angles).

Mol	Chain	Bond lengths		Bond angles	
		RMSZ	# Z >5	RMSZ	# Z >5
1	A	0.67	0/1176	0.79	0/1586
1	F	0.74	0/1201	0.90	2/1620 (0.1%)
All	All	0.70	0/2377	0.85	2/3206 (0.1%)

Chiral center outliers are detected by calculating the chiral volume of a chiral center and verifying if the center is modelled as a planar moiety or with the opposite hand. A planarity outlier is detected by checking planarity of atoms in a peptide group, atoms in a mainchain group or atoms of a sidechain that are expected to be planar.

Mol	Chain	#Chirality outliers	#Planarity outliers
1	F	0	1

There are no bond length outliers.

All (2) bond angle outliers are listed below:

Mol	Chain	Res	Type	Atoms	Z	Observed($^{\circ}$)	Ideal($^{\circ}$)
1	F	109	ASP	CB-CG-OD2	9.26	126.63	118.30
1	F	143	ARG	NE-CZ-NH2	-5.99	117.31	120.30

There are no chirality outliers.

All (1) planarity outliers are listed below:

Mol	Chain	Res	Type	Group
1	F	9	LYS	Peptide

5.2 Too-close contacts [i](#)

In the following table, the Non-H and H(model) columns list the number of non-hydrogen atoms and hydrogen atoms in the chain respectively. The H(added) column lists the number of hydrogen

atoms added and optimized by MolProbity. The Clashes column lists the number of clashes within the asymmetric unit, whereas Symm-Clashes lists symmetry related clashes.

Mol	Chain	Non-H	H(model)	H(added)	Clashes	Symm-Clashes
1	A	1158	0	1115	22	1
1	F	1182	0	1119	21	0
2	A	26	0	23	0	0
3	A	10	0	0	4	0
3	F	10	0	0	4	0
4	A	1	0	0	0	0
4	F	1	0	0	0	0
5	A	1	0	0	0	0
5	F	1	0	0	0	0
6	A	4	0	3	3	0
7	A	161	0	0	10	0
7	F	122	0	0	8	1
All	All	2677	0	2260	43	1

The all-atom clashscore is defined as the number of clashes found per 1000 atoms (including hydrogen atoms). The all-atom clashscore for this structure is 9.

All (43) close contacts within the same asymmetric unit are listed below, sorted by their clash magnitude.

Atom-1	Atom-2	Interatomic distance (Å)	Clash overlap (Å)
1:A:17[A]:ILE:HD11	7:F:2049:HOH:O	1.19	1.26
1:F:58[B]:THR:CG2	3:F:1155:SO4:O3	2.03	1.05
1:F:58[B]:THR:HG22	3:F:1155:SO4:O3	1.60	1.02
1:A:40:GLU:OE2	7:A:2065:HOH:O	1.82	0.97
1:A:58[B]:THR:HG22	3:A:1160:SO4:O2	1.64	0.97
1:A:17[A]:ILE:CD1	7:F:2049:HOH:O	1.89	0.90
1:A:69:ARG:NH2	1:A:78[A]:GLU:OE1	2.07	0.88
1:A:58[A]:THR:HG23	7:A:2085:HOH:O	1.73	0.87
1:F:58[B]:THR:HG23	3:F:1155:SO4:O3	1.76	0.85
1:F:90[B]:ASP:OD1	1:F:92:ASP:OD1	1.92	0.85
1:F:58[A]:THR:HG23	7:F:2053:HOH:O	1.77	0.85
1:A:96:ASP:HB3	7:A:2124:HOH:O	1.77	0.84
1:A:58[B]:THR:CG2	3:A:1160:SO4:O2	2.27	0.82
1:F:13[A]:PRO:HB2	1:F:15:GLN:HG3	1.69	0.74
1:A:91:LYS:NZ	6:A:1159:ACT:H2	2.04	0.73
1:A:96:ASP:CB	7:A:2124:HOH:O	2.36	0.72
1:F:1:ALA:HB2	1:F:23:LYS:O	1.90	0.71
1:A:91:LYS:HZ3	6:A:1159:ACT:H2	1.57	0.68
1:F:77[B]:GLU:HG2	7:F:2074:HOH:O	1.93	0.68

Continued on next page...

Continued from previous page...

Atom-1	Atom-2	Interatomic distance (Å)	Clash overlap (Å)
1:A:78[A]:GLU:HG2	7:A:2051:HOH:O	1.96	0.65
1:F:1:ALA:HB3	1:F:22:GLN:O	1.99	0.63
1:F:17:ILE:HG23	7:F:2019:HOH:O	2.00	0.61
1:A:133:GLU:HG2	3:A:1154:SO4:O4	2.03	0.58
1:F:1:ALA:CB	1:F:23:LYS:O	2.52	0.57
1:F:12[A]:GLY:N	1:F:13[A]:PRO:HA	2.21	0.54
1:F:77[B]:GLU:CD	1:F:77[B]:GLU:H	2.11	0.53
1:A:130:GLY:O	7:A:2150:HOH:O	2.20	0.49
1:A:96:ASP:CG	7:A:2123:HOH:O	2.51	0.48
1:A:58[A]:THR:CG2	7:A:2085:HOH:O	2.49	0.46
1:F:77[B]:GLU:CG	7:F:2074:HOH:O	2.59	0.46
1:F:1:ALA:HB2	7:F:2002:HOH:O	2.16	0.45
1:F:12[A]:GLY:N	1:F:13[A]:PRO:CA	2.80	0.45
1:A:31:VAL:HB	1:A:99:ILE:HB	2.00	0.44
1:F:12[B]:GLY:HA2	1:F:13[B]:PRO:HA	1.72	0.44
1:A:130:GLY:C	7:A:2150:HOH:O	2.55	0.43
1:F:58[B]:THR:CG2	3:F:1155:SO4:S	3.04	0.43
1:A:58[B]:THR:HG23	3:A:1160:SO4:O2	2.15	0.43
1:A:17[A]:ILE:HD11	7:A:2027:HOH:O	2.19	0.42
1:F:77[B]:GLU:CD	1:F:77[B]:GLU:N	2.73	0.42
1:F:22:GLN:HG2	1:F:24:GLU:O	2.20	0.41
1:A:17[A]:ILE:HD12	1:A:17[A]:ILE:HG23	1.71	0.41
1:F:53[A]:ASN:ND2	7:F:2047:HOH:O	2.16	0.40
1:A:91:LYS:HZ2	6:A:1159:ACT:H2	1.83	0.40

All (1) symmetry-related close contacts are listed below. The label for Atom-2 includes the symmetry operator and encoded unit-cell translations to be applied.

Atom-1	Atom-2	Interatomic distance (Å)	Clash overlap (Å)
1:A:96:ASP:OD2	7:F:2110:HOH:O[2_546]	2.13	0.07

5.3 Torsion angles [i](#)

5.3.1 Protein backbone [i](#)

In the following table, the Percentiles column shows the percent Ramachandran outliers of the chain as a percentile score with respect to all X-ray entries followed by that with respect to entries of similar resolution.

The Analysed column shows the number of residues for which the backbone conformation was

analysed, and the total number of residues.

Mol	Chain	Analysed	Favoured	Allowed	Outliers	Percentiles	
1	A	157/153 (103%)	157 (100%)	0	0	100	100
1	F	161/153 (105%)	152 (94%)	7 (4%)	2 (1%)	13	2
All	All	318/306 (104%)	309 (97%)	7 (2%)	2 (1%)	41	5

All (2) Ramachandran outliers are listed below:

Mol	Chain	Res	Type
1	F	12[A]	GLY
1	F	12[B]	GLY

5.3.2 Protein sidechains [i](#)

In the following table, the Percentiles column shows the percent sidechain outliers of the chain as a percentile score with respect to all X-ray entries followed by that with respect to entries of similar resolution.

The Analysed column shows the number of residues for which the sidechain conformation was analysed, and the total number of residues.

Mol	Chain	Analysed	Rotameric	Outliers	Percentiles	
1	A	124/118 (105%)	123 (99%)	1 (1%)	81	53
1	F	126/118 (107%)	126 (100%)	0	100	100
All	All	250/236 (106%)	249 (100%)	1 (0%)	91	68

All (1) residues with a non-rotameric sidechain are listed below:

Mol	Chain	Res	Type
1	A	132	GLU

Some sidechains can be flipped to improve hydrogen bonding and reduce clashes. There are no such sidechains identified.

5.3.3 RNA [i](#)

There are no RNA molecules in this entry.

5.4 Non-standard residues in protein, DNA, RNA chains [i](#)

There are no non-standard protein/DNA/RNA residues in this entry.

5.5 Carbohydrates [i](#)

There are no carbohydrates in this entry.

5.6 Ligand geometry [i](#)

Of 11 ligands modelled in this entry, 4 are monoatomic - leaving 7 for Mogul analysis.

In the following table, the Counts columns list the number of bonds (or angles) for which Mogul statistics could be retrieved, the number of bonds (or angles) that are observed in the model and the number of bonds (or angles) that are defined in the Chemical Component Dictionary. The Link column lists molecule types, if any, to which the group is linked. The Z score for a bond length (or angle) is the number of standard deviations the observed value is removed from the expected value. A bond length (or angle) with $|Z| > 2$ is considered an outlier worth inspection. RMSZ is the root-mean-square of all Z scores of the bond lengths (or angles).

Mol	Type	Chain	Res	Link	Bond lengths			Bond angles		
					Counts	RMSZ	# Z > 2	Counts	RMSZ	# Z > 2
3	SO4	A	1154	-	4,4,4	0.60	0	6,6,6	1.10	1 (16%)
3	SO4	F	1154	-	4,4,4	0.17	0	6,6,6	0.68	0
3	SO4	F	1155	-	4,4,4	0.42	0	6,6,6	0.34	0
2	ALE	A	1001	-	12,13,13	1.70	1 (8%)	16,17,17	0.88	1 (6%)
3	SO4	A	1160	-	4,4,4	0.36	0	6,6,6	0.26	0
6	ACT	A	1159	-	1,3,3	4.51	1 (100%)	0,3,3	0.00	-
2	ALE	A	1000	-	12,13,13	0.88	1 (8%)	16,17,17	1.06	1 (6%)

In the following table, the Chirals column lists the number of chiral outliers, the number of chiral centers analysed, the number of these observed in the model and the number defined in the Chemical Component Dictionary. Similar counts are reported in the Torsion and Rings columns. '2' means no outliers of that kind were identified.

Mol	Type	Chain	Res	Link	Chirals	Torsions	Rings
2	ALE	A	1000	-	-	0/7/7/7	0/1/1/1
2	ALE	A	1001	-	-	0/7/7/7	0/1/1/1

All (3) bond length outliers are listed below:

Mol	Chain	Res	Type	Atoms	Z	Observed(Å)	Ideal(Å)
2	A	1001	ALE	C1-C7	-5.39	1.42	1.51

Continued on next page...

Continued from previous page...

Mol	Chain	Res	Type	Atoms	Z	Observed(Å)	Ideal(Å)
6	A	1159	ACT	CH3-C	-4.51	1.43	1.48
2	A	1000	ALE	C1-C7	-2.35	1.47	1.51

All (3) bond angle outliers are listed below:

Mol	Chain	Res	Type	Atoms	Z	Observed(°)	Ideal(°)
2	A	1001	ALE	C7-C8-N1	-2.43	107.02	110.88
3	A	1154	SO4	O4-S-O2	-2.17	97.99	109.31
2	A	1000	ALE	O3-C7-C1	2.16	116.13	111.15

There are no chirality outliers.

There are no torsion outliers.

There are no ring outliers.

4 monomers are involved in 11 short contacts:

Mol	Chain	Res	Type	Clashes	Symm-Clashes
3	A	1154	SO4	1	0
3	F	1155	SO4	4	0
3	A	1160	SO4	3	0
6	A	1159	ACT	3	0

5.7 Other polymers [i](#)

There are no such residues in this entry.

5.8 Polymer linkage issues [i](#)

There are no chain breaks in this entry.

6 Fit of model and data [i](#)

6.1 Protein, DNA and RNA chains [i](#)

In the following table, the column labelled '#RSRZ > 2' contains the number (and percentage) of RSRZ outliers, followed by percent RSRZ outliers for the chain as percentile scores relative to all X-ray entries and entries of similar resolution. The OWAB column contains the minimum, median, 95th percentile and maximum values of the occupancy-weighted average B-factor per residue. The column labelled 'Q < 0.9' lists the number of (and percentage) of residues with an average occupancy less than 0.9.

Mol	Chain	Analysed	<RSRZ>	#RSRZ>2	OWAB(Å ²)	Q<0.9
1	A	153/153 (100%)	-0.02	2 (1%) 77 67	8, 12, 19, 26	10 (6%)
1	F	153/153 (100%)	0.21	11 (7%) 15 14	9, 15, 27, 34	9 (5%)
All	All	306/306 (100%)	0.10	13 (4%) 36 28	8, 13, 25, 34	19 (6%)

All (13) RSRZ outliers are listed below:

Mol	Chain	Res	Type	RSRZ
1	F	26	ASN	8.0
1	A	130	GLY	4.2
1	F	129	GLY	3.8
1	F	1	ALA	3.7
1	F	130	GLY	3.3
1	F	10[A]	GLY	3.2
1	F	23	LYS	3.0
1	F	90[A]	ASP	2.7
1	F	96	ASP	2.7
1	F	13[A]	PRO	2.7
1	F	12[A]	GLY	2.6
1	F	11[A]	ASP	2.5
1	A	55	ALA	2.3

6.2 Non-standard residues in protein, DNA, RNA chains [i](#)

There are no non-standard protein/DNA/RNA residues in this entry.

6.3 Carbohydrates [i](#)

There are no carbohydrates in this entry.

6.4 Ligands [i](#)

In the following table, the Atoms column lists the number of modelled atoms in the group and the number defined in the chemical component dictionary. The B-factors column lists the minimum, median, 95th percentile and maximum values of B factors of atoms in the group. The column labelled 'Q<0.9' lists the number of atoms with occupancy less than 0.9.

Mol	Type	Chain	Res	Atoms	RSCC	RSR	B-factors(Å ²)	Q<0.9
3	SO4	A	1160	5/5	0.73	0.19	27,29,31,42	5
3	SO4	F	1155	5/5	0.78	0.19	20,23,32,33	5
6	ACT	A	1159	4/4	0.87	0.09	14,16,16,20	0
2	ALE	A	1001	13/13	0.88	0.16	11,16,22,26	13
2	ALE	A	1000	13/13	0.95	0.13	11,12,14,15	0
3	SO4	F	1154	5/5	0.96	0.08	17,19,21,23	5
3	SO4	A	1154	5/5	0.97	0.09	17,18,23,30	5
4	CU	A	1157	1/1	1.00	0.04	9,9,9,9	1
5	ZN	F	1157	1/1	1.00	0.05	9,9,9,9	0
4	CU	F	1156	1/1	1.00	0.05	10,10,10,10	1
5	ZN	A	1158	1/1	1.00	0.04	9,9,9,9	0

6.5 Other polymers [i](#)

There are no such residues in this entry.