



# wwPDB X-ray Structure Validation Summary Report ⓘ

Aug 7, 2020 – 08:47 PM BST

PDB ID : 5A58  
Title : The structure of GH101 D764N mutant from *Streptococcus pneumoniae* TIGR4 in complex with serinyl T-antigen  
Authors : Gregg, K.J.; Suits, M.D.L.; Deng, L.; Vocadlo, D.J.; Boraston, A.B.  
Deposited on : 2015-06-16  
Resolution : 1.80 Å(reported)

This is a wwPDB X-ray Structure Validation Summary Report for a publicly released PDB entry.

We welcome your comments at [validation@mail.wwpdb.org](mailto:validation@mail.wwpdb.org)

A user guide is available at

<https://www.wwpdb.org/validation/2017/XrayValidationReportHelp>

with specific help available everywhere you see the ⓘ symbol.

---

The following versions of software and data (see [references ⓘ](#)) were used in the production of this report:

MolProbity : 4.02b-467  
Mogul : 1.8.5 (274361), CSD as541be (2020)  
Xtriage (Phenix) : 1.13  
EDS : 2.13.1  
Percentile statistics : 20191225.v01 (using entries in the PDB archive December 25th 2019)  
Refmac : 5.8.0158  
CCP4 : 7.0.044 (Gargrove)  
Ideal geometry (proteins) : Engh & Huber (2001)  
Ideal geometry (DNA, RNA) : Parkinson et al. (1996)  
Validation Pipeline (wwPDB-VP) : 2.13.1

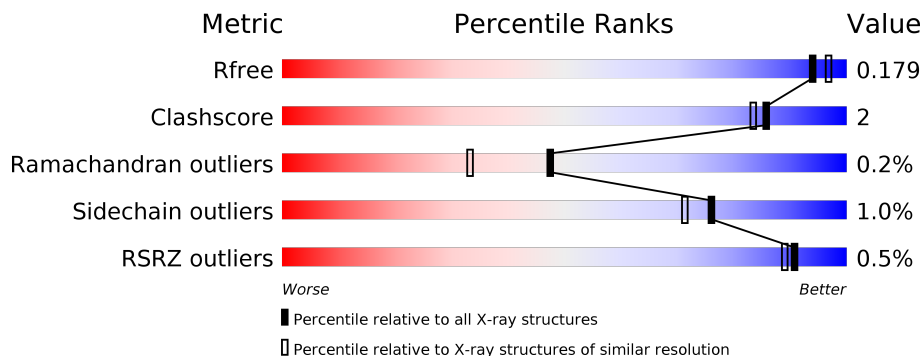
# 1 Overall quality at a glance

The following experimental techniques were used to determine the structure:

*X-RAY DIFFRACTION*


The reported resolution of this entry is 1.80 Å.

Percentile scores (ranging between 0-100) for global validation metrics of the entry are shown in the following graphic. The table shows the number of entries on which the scores are based.



Metric	Whole archive (#Entries)	Similar resolution (#Entries, resolution range(Å))
$R_{free}$	130704	5950 (1.80-1.80)
Clashscore	141614	6793 (1.80-1.80)
Ramachandran outliers	138981	6697 (1.80-1.80)
Sidechain outliers	138945	6696 (1.80-1.80)
RSRZ outliers	127900	5850 (1.80-1.80)

The table below summarises the geometric issues observed across the polymeric chains and their fit to the electron density. The red, orange, yellow and green segments on the lower bar indicate the fraction of residues that contain outliers for  $\geq 3$ , 2, 1 and 0 types of geometric quality criteria respectively. A grey segment represents the fraction of residues that are not modelled. The numeric value for each fraction is indicated below the corresponding segment, with a dot representing fractions  $\leq 5\%$ . The upper red bar (where present) indicates the fraction of residues that have poor fit to the electron density. The numeric value is given above the bar.

Mol	Chain	Length	Quality of chain
1	A	1117	 94% 5%
2	B	2	 50% 50%

## 2 Entry composition [i](#)

There are 8 unique types of molecules in this entry. The entry contains 10751 atoms, of which 0 are hydrogens and 0 are deuteriums.

In the tables below, the ZeroOcc column contains the number of atoms modelled with zero occupancy, the AltConf column contains the number of residues with at least one atom in alternate conformation and the Trace column contains the number of residues modelled with at most 2 atoms.

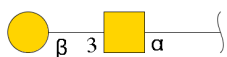
- Molecule 1 is a protein called ENDO-ALPHA-GALACTOSAMINIDASE.

Mol	Chain	Residues	Atoms					ZeroOcc	AltConf	Trace
			Total	C	N	O	S			
1	A	1106	8892	5601	1521	1745	25	0	27	0

There are 12 discrepancies between the modelled and reference sequences:

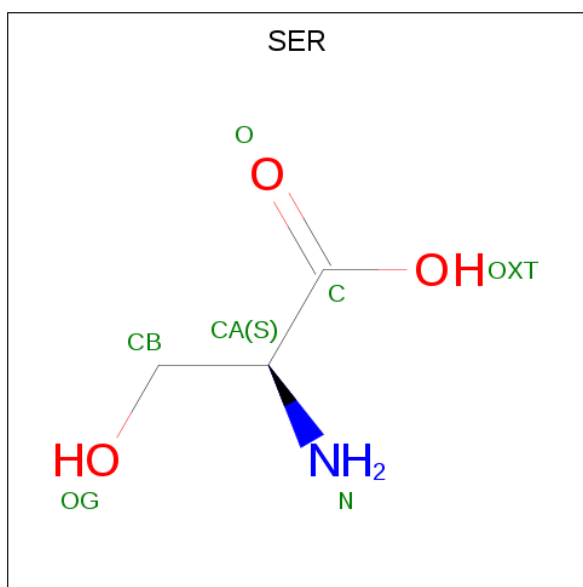
Chain	Residue	Modelled	Actual	Comment	Reference
A	316	MET	-	expression tag	UNP Q2MGH6
A	1427	HIS	-	expression tag	UNP Q2MGH6
A	1428	HIS	-	expression tag	UNP Q2MGH6
A	1429	HIS	-	expression tag	UNP Q2MGH6
A	1430	HIS	-	expression tag	UNP Q2MGH6
A	1431	HIS	-	expression tag	UNP Q2MGH6
A	1432	HIS	-	expression tag	UNP Q2MGH6
A	461	ASP	ASN	conflict	UNP Q2MGH6
A	764	ASN	ASP	conflict	UNP Q2MGH6
A	1165	ASN	ASP	conflict	UNP Q2MGH6
A	1202	GLU	GLN	conflict	UNP Q2MGH6
A	1264	ASP	ASN	conflict	UNP Q2MGH6

- Molecule 2 is an oligosaccharide called beta-D-galactopyranose-(1-3)-2-acetamido-2-deoxy-alpha-D-galactopyranose.



Mol	Chain	Residues	Atoms				ZeroOcc	AltConf	Trace
			Total	C	N	O			
2	B	2	25	14	1	10	0	0	0

- Molecule 3 is SERINE (three-letter code: SER) (formula: C<sub>3</sub>H<sub>7</sub>NO<sub>3</sub>).



Mol	Chain	Residues	Atoms			ZeroOcc	AltConf	
			Total	C	N			O
3	A	1	7	3	1	3	0	0

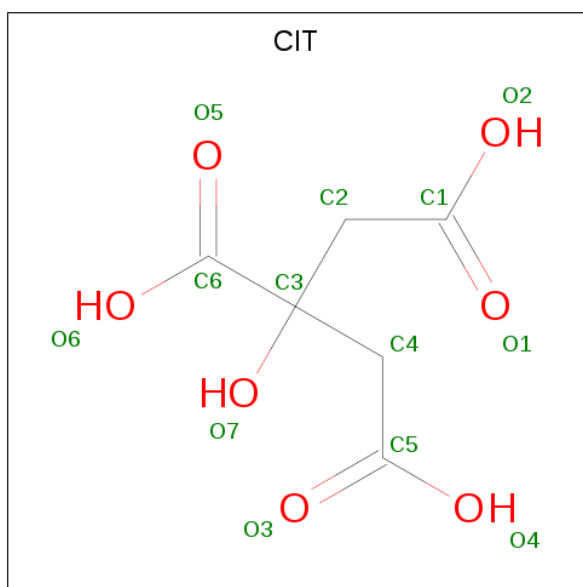
- Molecule 4 is CALCIUM ION (three-letter code: CA) (formula: Ca).

Mol	Chain	Residues	Atoms		ZeroOcc	AltConf
			Total	Ca		
4	A	3	3	3	0	0

- Molecule 5 is MANGANESE (II) ION (three-letter code: MN) (formula: Mn).

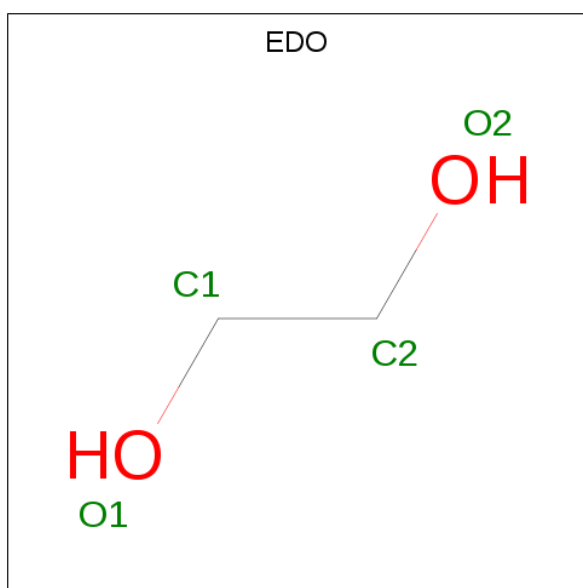
Mol	Chain	Residues	Atoms		ZeroOcc	AltConf
			Total	Mn		
5	A	1	1	1	0	0

- Molecule 6 is CITRIC ACID (three-letter code: CIT) (formula: C<sub>6</sub>H<sub>8</sub>O<sub>7</sub>).



Mol	Chain	Residues	Atoms			ZeroOcc	AltConf
6	A	1	Total	C	O	0	0
			13	6	7		
6	A	1	Total	C	O	0	0
			13	6	7		

- Molecule 7 is 1,2-ETHANEDIOL (three-letter code: EDO) (formula:  $C_2H_6O_2$ ).



Mol	Chain	Residues	Atoms			ZeroOcc	AltConf
7	A	1	Total	C	O	0	0
			4	2	2		
7	A	1	Total	C	O	0	0
			4	2	2		

*Continued on next page...*

*Continued from previous page...*

Mol	Chain	Residues	Atoms			ZeroOcc	AltConf
7	A	1	Total	C	O	0	0
			4	2	2		
7	A	1	Total	C	O	0	0
			4	2	2		
7	A	1	Total	C	O	0	0
			4	2	2		
7	A	1	Total	C	O	0	0
			4	2	2		
7	A	1	Total	C	O	0	0
			4	2	2		
7	A	1	Total	C	O	0	0
			4	2	2		
7	A	1	Total	C	O	0	0
			4	2	2		
7	A	1	Total	C	O	0	0
			4	2	2		
7	A	1	Total	C	O	0	0
			4	2	2		
7	A	1	Total	C	O	0	0
			4	2	2		
7	A	1	Total	C	O	0	0
			4	2	2		
7	A	1	Total	C	O	0	0
			4	2	2		
7	A	1	Total	C	O	0	0
			4	2	2		
7	A	1	Total	C	O	0	0
			4	2	2		
7	A	1	Total	C	O	0	0
			4	2	2		

*Continued on next page...*

*Continued from previous page...*

Mol	Chain	Residues	Atoms	ZeroOcc	AltConf
7	A	1	Total C O 4 2 2	0	0
7	A	1	Total C O 4 2 2	0	0
7	A	1	Total C O 4 2 2	0	0
7	A	1	Total C O 4 2 2	0	0
7	A	1	Total C O 4 2 2	0	0
7	A	1	Total C O 4 2 2	0	0
7	A	1	Total C O 4 2 2	0	0
7	A	1	Total C O 4 2 2	0	0

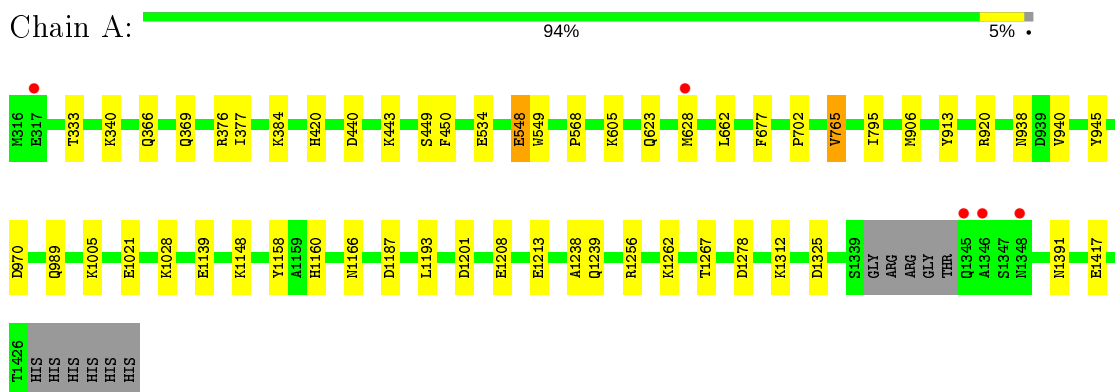
- Molecule 8 is water.

Mol	Chain	Residues	Atoms	ZeroOcc	AltConf
8	A	1673	Total O 1673 1673	0	0

### 3 Residue-property plots [i](#)

These plots are drawn for all protein, RNA, DNA and oligosaccharide chains in the entry. The first graphic for a chain summarises the proportions of the various outlier classes displayed in the second graphic. The second graphic shows the sequence view annotated by issues in geometry and electron density. Residues are color-coded according to the number of geometric quality criteria for which they contain at least one outlier: green = 0, yellow = 1, orange = 2 and red = 3 or more. A red dot above a residue indicates a poor fit to the electron density ( $RSRZ > 2$ ). Stretches of 2 or more consecutive residues without any outlier are shown as a green connector. Residues present in the sample, but not in the model, are shown in grey.

- Molecule 1: ENDO-ALPHA-GALACTOSAMINIDASE



- Molecule 2: beta-D-galactopyranose-(1-3)-2-acetamido-2-deoxy-alpha-D-galactopyranose





## 4 Data and refinement statistics

Property	Value	Source
Space group	P 2 21 21	Depositor
Cell constants a, b, c, $\alpha$ , $\beta$ , $\gamma$	87.07Å 121.96Å 139.60Å 90.00° 90.00° 90.00°	Depositor
Resolution (Å)	39.03 – 1.80 38.90 – 1.80	Depositor EDS
% Data completeness (in resolution range)	99.6 (39.03-1.80) 99.6 (38.90-1.80)	Depositor EDS
$R_{merge}$	0.06	Depositor
$R_{sym}$	(Not available)	Depositor
$\langle I/\sigma(I) \rangle$ <sup>1</sup>	4.58 (at 1.81Å)	Xtrriage
Refinement program	REFMAC 5.8.0073	Depositor
R, $R_{free}$	0.149 , 0.179 0.149 , 0.179	Depositor DCC
$R_{free}$ test set	6863 reflections (5.02%)	wwPDB-VP
Wilson B-factor (Å <sup>2</sup> )	14.2	Xtrriage
Anisotropy	0.028	Xtrriage
Bulk solvent $k_{sol}$ (e/Å <sup>3</sup> ), $B_{sol}$ (Å <sup>2</sup> )	0.35 , 51.0	EDS
L-test for twinning <sup>2</sup>	$\langle  L  \rangle = 0.50$ , $\langle L^2 \rangle = 0.33$	Xtrriage
Estimated twinning fraction	No twinning to report.	Xtrriage
$F_o, F_c$ correlation	0.97	EDS
Total number of atoms	10751	wwPDB-VP
Average B, all atoms (Å <sup>2</sup> )	17.0	wwPDB-VP

Xtrriage's analysis on translational NCS is as follows: *The largest off-origin peak in the Patterson function is 3.03% of the height of the origin peak. No significant pseudotranslation is detected.*

<sup>1</sup>Intensities estimated from amplitudes.

<sup>2</sup>Theoretical values of  $\langle |L| \rangle$ ,  $\langle L^2 \rangle$  for acentric reflections are 0.5, 0.333 respectively for untwinned datasets, and 0.375, 0.2 for perfectly twinned datasets.

## 5 Model quality [i](#)

### 5.1 Standard geometry [i](#)

Bond lengths and bond angles in the following residue types are not validated in this section: CA, MN, EDO, GAL, CIT, A2G

The Z score for a bond length (or angle) is the number of standard deviations the observed value is removed from the expected value. A bond length (or angle) with  $|Z| > 5$  is considered an outlier worth inspection. RMSZ is the root-mean-square of all Z scores of the bond lengths (or angles).

Mol	Chain	Bond lengths		Bond angles	
		RMSZ	# Z  >5	RMSZ	# Z  >5
1	A	0.61	0/9180	0.69	3/12436 (0.0%)

There are no bond length outliers.

All (3) bond angle outliers are listed below:

Mol	Chain	Res	Type	Atoms	Z	Observed( $^{\circ}$ )	Ideal( $^{\circ}$ )
1	A	970	ASP	CB-CG-OD1	6.74	124.36	118.30
1	A	1256	ARG	NE-CZ-NH2	-5.40	117.60	120.30
1	A	1187	ASP	CB-CG-OD1	5.35	123.12	118.30

There are no chirality outliers.

There are no planarity outliers.

### 5.2 Too-close contacts [i](#)

In the following table, the Non-H and H(model) columns list the number of non-hydrogen atoms and hydrogen atoms in the chain respectively. The H(added) column lists the number of hydrogen atoms added and optimized by MolProbity. The Clashes column lists the number of clashes within the asymmetric unit, whereas Symm-Clashes lists symmetry related clashes.

Mol	Chain	Non-H	H(model)	H(added)	Clashes	Symm-Clashes
1	A	8892	0	8558	39	0
2	B	25	0	21	0	0
3	A	7	0	3	0	0
4	A	3	0	0	0	0
5	A	1	0	0	0	0
6	A	26	0	10	4	0
7	A	124	0	186	9	0
8	A	1673	0	0	11	0

*Continued on next page...*

Continued from previous page...

Mol	Chain	Non-H	H(model)	H(added)	Clashes	Symm-Clashes
All	All	10751	0	8778	40	0

The all-atom clashscore is defined as the number of clashes found per 1000 atoms (including hydrogen atoms). The all-atom clashscore for this structure is 2.

The worst 5 of 40 close contacts within the same asymmetric unit are listed below, sorted by their clash magnitude.

Atom-1	Atom-2	Interatomic distance (Å)	Clash overlap (Å)
1:A:1213:GLU:HG3	8:A:4407:HOH:O	1.87	0.73
1:A:1201:ASP:HB2	6:A:2432:CIT:H22	1.70	0.72
1:A:628[A]:MET:HE2	8:A:4187:HOH:O	1.99	0.63
1:A:420:HIS:ND1	7:A:2455:EDO:H22	2.16	0.60
1:A:440:ASP:HB3	1:A:443:LYS:HE2	1.83	0.60

There are no symmetry-related clashes.

## 5.3 Torsion angles [i](#)

### 5.3.1 Protein backbone [i](#)

In the following table, the Percentiles column shows the percent Ramachandran outliers of the chain as a percentile score with respect to all X-ray entries followed by that with respect to entries of similar resolution.

The Analysed column shows the number of residues for which the backbone conformation was analysed, and the total number of residues.

Mol	Chain	Analysed	Favoured	Allowed	Outliers	Percentiles
1	A	1130/1117 (101%)	1098 (97%)	30 (3%)	2 (0%)	47 33

All (2) Ramachandran outliers are listed below:

Mol	Chain	Res	Type
1	A	662	LEU
1	A	765	VAL

### 5.3.2 Protein sidechains [i](#)

In the following table, the Percentiles column shows the percent sidechain outliers of the chain as a percentile score with respect to all X-ray entries followed by that with respect to entries of similar

resolution.

The Analysed column shows the number of residues for which the sidechain conformation was analysed, and the total number of residues.

Mol	Chain	Analysed	Rotameric	Outliers	Percentiles
1	A	957/942 (102%)	948 (99%)	9 (1%)	78 75

5 of 9 residues with a non-rotameric sidechain are listed below:

Mol	Chain	Res	Type
1	A	938	ASN
1	A	1239	GLN
1	A	1166	ASN
1	A	677	PHE
1	A	989	GLN

Some sidechains can be flipped to improve hydrogen bonding and reduce clashes. All (1) such sidechains are listed below:

Mol	Chain	Res	Type
1	A	941	ASN

### 5.3.3 RNA [i](#)

There are no RNA molecules in this entry.

## 5.4 Non-standard residues in protein, DNA, RNA chains [i](#)

There are no non-standard protein/DNA/RNA residues in this entry.

## 5.5 Carbohydrates [i](#)

2 monosaccharides are modelled in this entry.

In the following table, the Counts columns list the number of bonds (or angles) for which Mogul statistics could be retrieved, the number of bonds (or angles) that are observed in the model and the number of bonds (or angles) that are defined in the Chemical Component Dictionary. The Link column lists molecule types, if any, to which the group is linked. The Z score for a bond length (or angle) is the number of standard deviations the observed value is removed from the expected value. A bond length (or angle) with  $|Z| > 2$  is considered an outlier worth inspection. RMSZ is the root-mean-square of all Z scores of the bond lengths (or angles).

Mol	Type	Chain	Res	Link	Bond lengths			Bond angles		
					Counts	RMSZ	# Z  > 2	Counts	RMSZ	# Z  > 2
2	A2G	B	1	3,2	14,14,15	0.79	0	17,19,21	1.30	2 (11%)
2	GAL	B	2	2	11,11,12	0.62	0	15,15,17	0.84	0

In the following table, the Chirals column lists the number of chiral outliers, the number of chiral centers analysed, the number of these observed in the model and the number defined in the Chemical Component Dictionary. Similar counts are reported in the Torsion and Rings columns. '-' means no outliers of that kind were identified.

Mol	Type	Chain	Res	Link	Chirals	Torsions	Rings
2	A2G	B	1	3,2	-	0/6/23/26	0/1/1/1
2	GAL	B	2	2	-	0/2/19/22	0/1/1/1

There are no bond length outliers.

All (2) bond angle outliers are listed below:

Mol	Chain	Res	Type	Atoms	Z	Observed(°)	Ideal(°)
2	B	1	A2G	C1-O5-C5	3.58	117.04	112.19
2	B	1	A2G	O5-C1-C2	-2.50	107.34	111.29

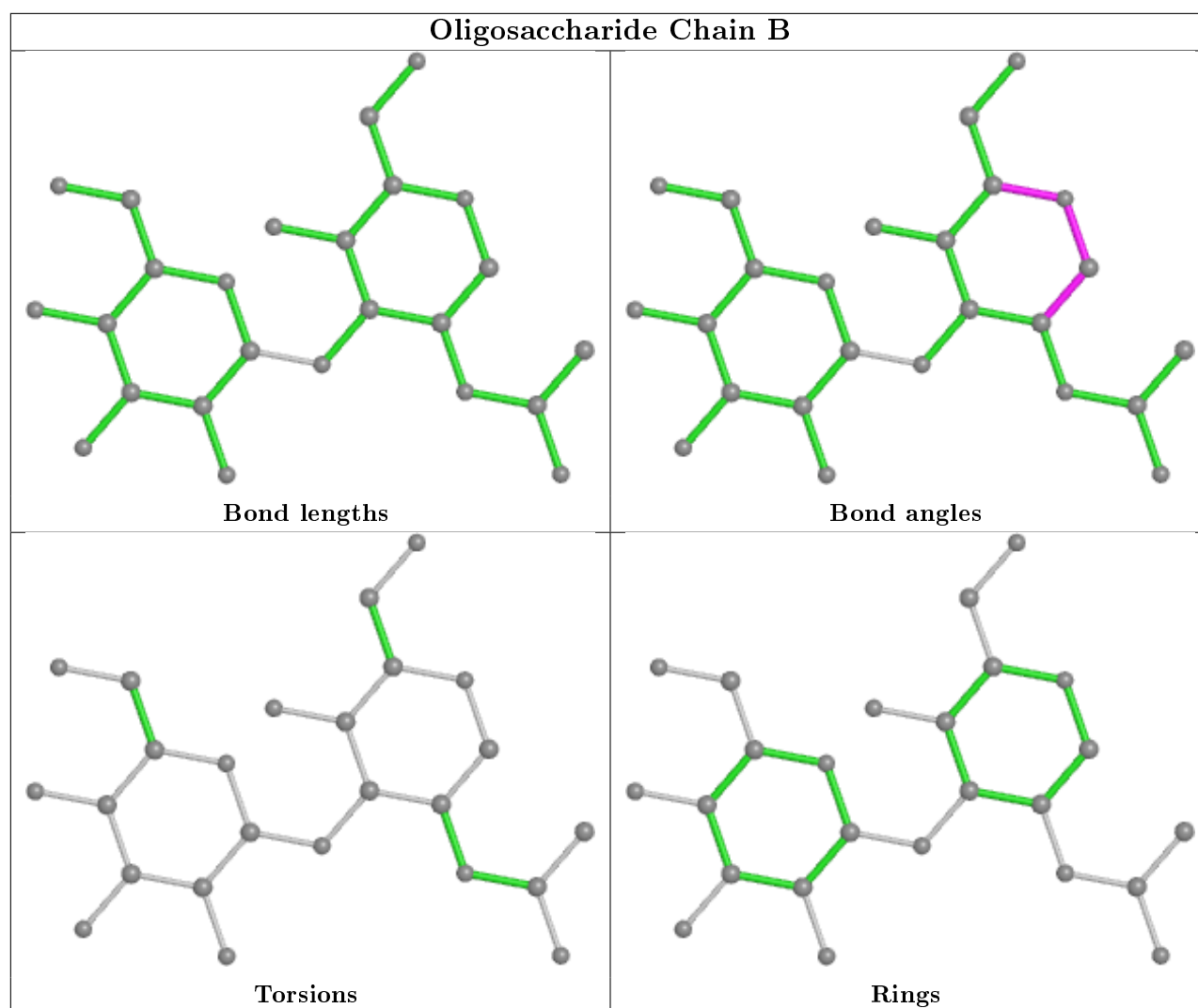
There are no chirality outliers.

There are no torsion outliers.

There are no ring outliers.

No monomer is involved in short contacts.

The following is a two-dimensional graphical depiction of Mogul quality analysis of bond lengths, bond angles, torsion angles, and ring geometry for oligosaccharide.



## 5.6 Ligand geometry [i](#)

Of 38 ligands modelled in this entry, 4 are monoatomic - leaving 34 for Mogul analysis.

In the following table, the Counts columns list the number of bonds (or angles) for which Mogul statistics could be retrieved, the number of bonds (or angles) that are observed in the model and the number of bonds (or angles) that are defined in the Chemical Component Dictionary. The Link column lists molecule types, if any, to which the group is linked. The Z score for a bond length (or angle) is the number of standard deviations the observed value is removed from the expected value. A bond length (or angle) with  $|Z| > 2$  is considered an outlier worth inspection. RMSZ is the root-mean-square of all Z scores of the bond lengths (or angles).

Mol	Type	Chain	Res	Link	Bond lengths			Bond angles		
					Counts	RMSZ	$\# Z  > 2$	Counts	RMSZ	$\# Z  > 2$
6	CIT	A	2432	-	3,12,12	1.14	0	3,17,17	1.45	1 (33%)
7	EDO	A	2448	-	3,3,3	0.52	0	2,2,2	0.40	0
7	EDO	A	2458	-	3,3,3	0.43	0	2,2,2	0.47	0

Mol	Type	Chain	Res	Link	Bond lengths			Bond angles		
					Counts	RMSZ	# Z  > 2	Counts	RMSZ	# Z  > 2
7	EDO	A	2452	-	3,3,3	0.56	0	2,2,2	0.55	0
7	EDO	A	2442	-	3,3,3	0.34	0	2,2,2	0.64	0
7	EDO	A	2465	-	3,3,3	0.36	0	2,2,2	0.79	0
7	EDO	A	2454	-	3,3,3	0.48	0	2,2,2	0.55	0
7	EDO	A	2459	-	3,3,3	0.53	0	2,2,2	0.41	0
7	EDO	A	2443	-	3,3,3	0.49	0	2,2,2	0.35	0
7	EDO	A	2456	-	3,3,3	0.54	0	2,2,2	0.64	0
7	EDO	A	2440	-	3,3,3	0.53	0	2,2,2	0.28	0
7	EDO	A	2438	-	3,3,3	0.63	0	2,2,2	0.25	0
7	EDO	A	2463	-	3,3,3	0.29	0	2,2,2	0.82	0
7	EDO	A	2455	-	3,3,3	0.39	0	2,2,2	0.34	0
7	EDO	A	2445	-	3,3,3	0.39	0	2,2,2	0.26	0
7	EDO	A	2451	-	3,3,3	0.70	0	2,2,2	0.47	0
7	EDO	A	2457	-	3,3,3	0.33	0	2,2,2	0.38	0
7	EDO	A	2466	-	3,3,3	0.52	0	2,2,2	0.55	0
7	EDO	A	2453	-	3,3,3	0.43	0	2,2,2	0.39	0
7	EDO	A	2447	-	3,3,3	0.14	0	2,2,2	1.22	0
6	CIT	A	2431	-	3,12,12	3.57	2 (66%)	3,17,17	3.52	2 (66%)
7	EDO	A	2437	-	3,3,3	0.59	0	2,2,2	0.37	0
7	EDO	A	2464	-	3,3,3	0.35	0	2,2,2	0.63	0
7	EDO	A	2436	-	3,3,3	0.51	0	2,2,2	0.21	0
7	EDO	A	2462	-	3,3,3	0.39	0	2,2,2	0.62	0
7	EDO	A	2446	-	3,3,3	0.33	0	2,2,2	0.82	0
7	EDO	A	2450	-	3,3,3	0.84	0	2,2,2	0.24	0
7	EDO	A	2449	-	3,3,3	0.72	0	2,2,2	0.36	0
7	EDO	A	2439	-	3,3,3	0.47	0	2,2,2	0.67	0
7	EDO	A	2441	-	3,3,3	0.43	0	2,2,2	0.46	0
7	EDO	A	2444	-	3,3,3	0.33	0	2,2,2	0.56	0
7	EDO	A	2460	-	3,3,3	0.78	0	2,2,2	0.34	0
7	EDO	A	2461	-	3,3,3	0.46	0	2,2,2	0.48	0

In the following table, the Chirals column lists the number of chiral outliers, the number of chiral centers analysed, the number of these observed in the model and the number defined in the Chemical Component Dictionary. Similar counts are reported in the Torsion and Rings columns. '-' means no outliers of that kind were identified.

Mol	Type	Chain	Res	Link	Chirals	Torsions	Rings
6	CIT	A	2432	-	-	4/6/16/16	-
7	EDO	A	2448	-	-	1/1/1/1	-
7	EDO	A	2458	-	-	0/1/1/1	-
7	EDO	A	2452	-	-	0/1/1/1	-
7	EDO	A	2442	-	-	1/1/1/1	-

*Continued on next page...*

Continued from previous page...

Mol	Type	Chain	Res	Link	Chirals	Torsions	Rings
7	EDO	A	2465	-	-	1/1/1/1	-
7	EDO	A	2454	-	-	0/1/1/1	-
7	EDO	A	2459	-	-	0/1/1/1	-
7	EDO	A	2443	-	-	0/1/1/1	-
7	EDO	A	2456	-	-	0/1/1/1	-
7	EDO	A	2440	-	-	1/1/1/1	-
7	EDO	A	2438	-	-	1/1/1/1	-
7	EDO	A	2463	-	-	0/1/1/1	-
7	EDO	A	2455	-	-	1/1/1/1	-
7	EDO	A	2445	-	-	0/1/1/1	-
7	EDO	A	2451	-	-	0/1/1/1	-
7	EDO	A	2457	-	-	1/1/1/1	-
7	EDO	A	2466	-	-	1/1/1/1	-
7	EDO	A	2453	-	-	0/1/1/1	-
7	EDO	A	2447	-	-	1/1/1/1	-
6	CIT	A	2431	-	-	1/6/16/16	-
7	EDO	A	2437	-	-	1/1/1/1	-
7	EDO	A	2464	-	-	0/1/1/1	-
7	EDO	A	2436	-	-	0/1/1/1	-
7	EDO	A	2462	-	-	0/1/1/1	-
7	EDO	A	2446	-	-	0/1/1/1	-
7	EDO	A	2450	-	-	0/1/1/1	-
7	EDO	A	2449	-	-	0/1/1/1	-
7	EDO	A	2439	-	-	0/1/1/1	-
7	EDO	A	2441	-	-	1/1/1/1	-
7	EDO	A	2444	-	-	0/1/1/1	-
7	EDO	A	2460	-	-	0/1/1/1	-
7	EDO	A	2461	-	-	0/1/1/1	-

All (2) bond length outliers are listed below:

Mol	Chain	Res	Type	Atoms	Z	Observed(Å)	Ideal(Å)
6	A	2431	CIT	C4-C3	-5.58	1.47	1.54
6	A	2431	CIT	C2-C3	-2.56	1.51	1.54

All (3) bond angle outliers are listed below:

Mol	Chain	Res	Type	Atoms	Z	Observed(°)	Ideal(°)
6	A	2431	CIT	C4-C3-C2	5.61	124.32	109.33
6	A	2432	CIT	C3-C2-C1	2.40	118.83	114.98
6	A	2431	CIT	C3-C4-C5	-2.14	111.56	114.98



There are no chirality outliers.

5 of 16 torsion outliers are listed below:

Mol	Chain	Res	Type	Atoms
6	A	2432	CIT	C2-C3-C4-C5
6	A	2432	CIT	O7-C3-C4-C5
6	A	2432	CIT	C6-C3-C4-C5
7	A	2442	EDO	O1-C1-C2-O2
7	A	2441	EDO	O1-C1-C2-O2

There are no ring outliers.

7 monomers are involved in 13 short contacts:

Mol	Chain	Res	Type	Clashes	Symm-Clashes
6	A	2432	CIT	4	0
7	A	2448	EDO	1	0
7	A	2452	EDO	1	0
7	A	2438	EDO	3	0
7	A	2455	EDO	2	0
7	A	2447	EDO	1	0
7	A	2449	EDO	1	0

## 5.7 Other polymers [i](#)

There are no such residues in this entry.

## 5.8 Polymer linkage issues [i](#)

There are no chain breaks in this entry.

## 6 Fit of model and data [i](#)

### 6.1 Protein, DNA and RNA chains [i](#)

In the following table, the column labelled '#RSRZ > 2' contains the number (and percentage) of RSRZ outliers, followed by percent RSRZ outliers for the chain as percentile scores relative to all X-ray entries and entries of similar resolution. The OWAB column contains the minimum, median, 95<sup>th</sup> percentile and maximum values of the occupancy-weighted average B-factor per residue. The column labelled 'Q < 0.9' lists the number of (and percentage) of residues with an average occupancy less than 0.9.

Mol	Chain	Analysed	<RSRZ>	#RSRZ>2	OWAB(Å <sup>2</sup> )	Q<0.9
1	A	1106/1117 (99%)	-0.56	5 (0%) <b>91</b> <b>89</b>	8, 13, 27, 51	0

All (5) RSRZ outliers are listed below:

Mol	Chain	Res	Type	RSRZ
1	A	1345	GLN	2.9
1	A	1348	ASN	2.5
1	A	1346	ALA	2.4
1	A	628[A]	MET	2.4
1	A	317	GLU	2.2

### 6.2 Non-standard residues in protein, DNA, RNA chains [i](#)

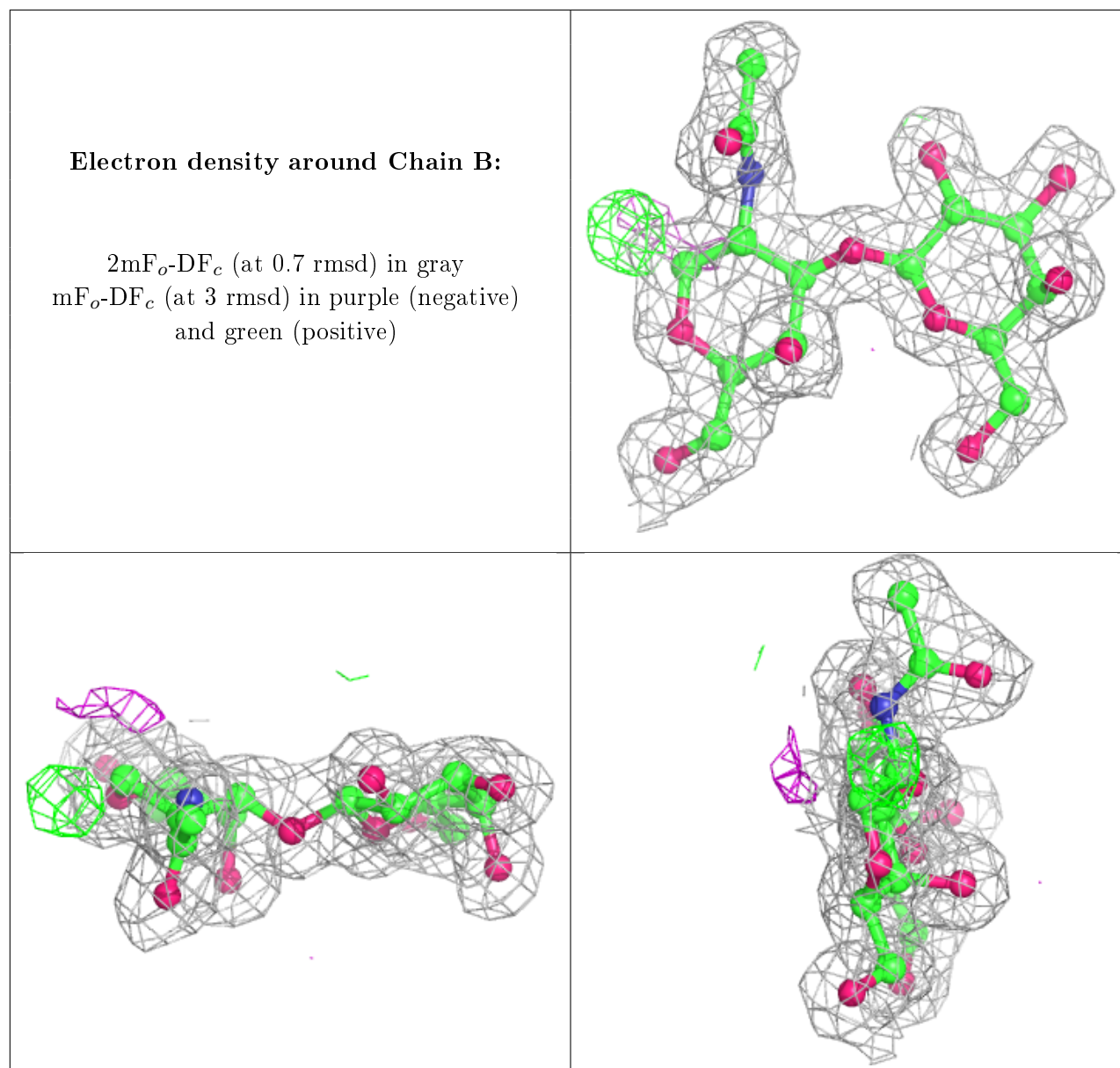
There are no non-standard protein/DNA/RNA residues in this entry.

### 6.3 Carbohydrates [i](#)

In the following table, the Atoms column lists the number of modelled atoms in the group and the number defined in the chemical component dictionary. The B-factors column lists the minimum, median, 95<sup>th</sup> percentile and maximum values of B factors of atoms in the group. The column labelled 'Q < 0.9' lists the number of atoms with occupancy less than 0.9.

Mol	Type	Chain	Res	Atoms	RSCC	RSR	B-factors(Å <sup>2</sup> )	Q<0.9
2	A2G	B	1	14/15	0.97	0.07	12,14,17,17	0
2	GAL	B	2	11/12	0.98	0.07	12,12,13,14	0

The following is a graphical depiction of the model fit to experimental electron density for oligosaccharide. Each fit is shown from different orientation to approximate a three-dimensional view.



## 6.4 Ligands [i](#)

In the following table, the Atoms column lists the number of modelled atoms in the group and the number defined in the chemical component dictionary. The B-factors column lists the minimum, median, 95<sup>th</sup> percentile and maximum values of B factors of atoms in the group. The column labelled 'Q< 0.9' lists the number of atoms with occupancy less than 0.9.

Mol	Type	Chain	Res	Atoms	RSCC	RSR	B-factors(Å <sup>2</sup> )	Q<0.9
7	EDO	A	2465	4/4	0.61	0.21	38,40,40,46	0
7	EDO	A	2441	4/4	0.72	0.20	46,46,48,51	0
7	EDO	A	2463	4/4	0.84	0.18	39,39,43,47	0
7	EDO	A	2437	4/4	0.85	0.22	25,26,30,38	0
7	EDO	A	2438	4/4	0.85	0.29	27,30,30,33	0

*Continued on next page...*

*Continued from previous page...*

Mol	Type	Chain	Res	Atoms	RSCC	RSR	B-factors( $\text{\AA}^2$ )	Q<0.9
7	EDO	A	2466	4/4	0.87	0.17	35,41,45,53	0
7	EDO	A	2447	4/4	0.89	0.17	22,22,26,27	0
7	EDO	A	2462	4/4	0.89	0.12	46,46,46,50	0
7	EDO	A	2464	4/4	0.89	0.23	46,48,48,52	0
7	EDO	A	2454	4/4	0.89	0.20	25,33,37,45	0
7	EDO	A	2458	4/4	0.90	0.24	38,39,40,41	0
6	CIT	A	2432	13/13	0.91	0.26	22,39,52,53	0
7	EDO	A	2446	4/4	0.91	0.18	32,33,34,38	0
7	EDO	A	2459	4/4	0.91	0.15	26,29,29,30	0
7	EDO	A	2460	4/4	0.91	0.14	22,27,27,31	0
7	EDO	A	2450	4/4	0.92	0.13	21,23,24,25	0
7	EDO	A	2443	4/4	0.92	0.16	25,25,26,29	0
7	EDO	A	2442	4/4	0.92	0.32	34,37,39,45	0
7	EDO	A	2461	4/4	0.92	0.17	38,39,40,40	0
3	SER	A	2435	7/7	0.93	0.18	20,24,26,29	0
7	EDO	A	2440	4/4	0.93	0.19	28,30,31,33	0
7	EDO	A	2457	4/4	0.93	0.25	28,31,35,39	0
6	CIT	A	2431	13/13	0.94	0.11	18,20,24,24	0
7	EDO	A	2456	4/4	0.94	0.14	25,28,29,34	0
7	EDO	A	2449	4/4	0.95	0.10	20,24,25,26	0
7	EDO	A	2439	4/4	0.95	0.10	22,23,23,28	0
7	EDO	A	2448	4/4	0.96	0.11	14,14,16,17	0
7	EDO	A	2453	4/4	0.96	0.15	23,27,31,37	0
7	EDO	A	2455	4/4	0.96	0.18	31,32,33,33	0
7	EDO	A	2451	4/4	0.97	0.06	14,15,16,17	0
7	EDO	A	2445	4/4	0.97	0.19	21,24,24,26	0
7	EDO	A	2452	4/4	0.97	0.09	19,21,21,21	0
7	EDO	A	2444	4/4	0.97	0.08	23,26,28,33	0
7	EDO	A	2436	4/4	0.98	0.11	21,22,22,23	0
4	CA	A	2427	1/1	0.99	0.04	14,14,14,14	0
5	MN	A	2428	1/1	1.00	0.08	10,10,10,10	0
4	CA	A	2430	1/1	1.00	0.04	13,13,13,13	0
4	CA	A	2429	1/1	1.00	0.04	11,11,11,11	0

## 6.5 Other polymers [i](#)

There are no such residues in this entry.