



Full wwPDB X-ray Structure Validation Report ⓘ

Oct 23, 2023 – 09:41 AM EDT

PDB ID : 3A51
Title : Structure of cytochrome P450 Vdh mutant (Vdh-K1) obtained by directed evolution with bound 25-hydroxyvitamin D3
Authors : Yasutake, Y.; Fujii, Y.; Cheon, W.K.; Arisawa, A.; Tamura, T.
Deposited on : 2009-07-24
Resolution : 2.00 Å(reported)

This is a Full wwPDB X-ray Structure Validation Report for a publicly released PDB entry.

We welcome your comments at validation@mail.wwpdb.org

A user guide is available at

<https://www.wwpdb.org/validation/2017/XrayValidationReportHelp>

with specific help available everywhere you see the ⓘ symbol.

The types of validation reports are described at

<http://www.wwpdb.org/validation/2017/FAQs#types>.

The following versions of software and data (see [references ⓘ](#)) were used in the production of this report:

MolProbity : 4.02b-467
Mogul : 1.8.5 (274361), CSD as541be (2020)
Xtriage (Phenix) : 1.13
EDS : 2.36
buster-report : 1.1.7 (2018)
Percentile statistics : 20191225.v01 (using entries in the PDB archive December 25th 2019)
Refmac : 5.8.0158
CCP4 : 7.0.044 (Gargrove)
Ideal geometry (proteins) : Engh & Huber (2001)
Ideal geometry (DNA, RNA) : Parkinson et al. (1996)
Validation Pipeline (wwPDB-VP) : 2.36

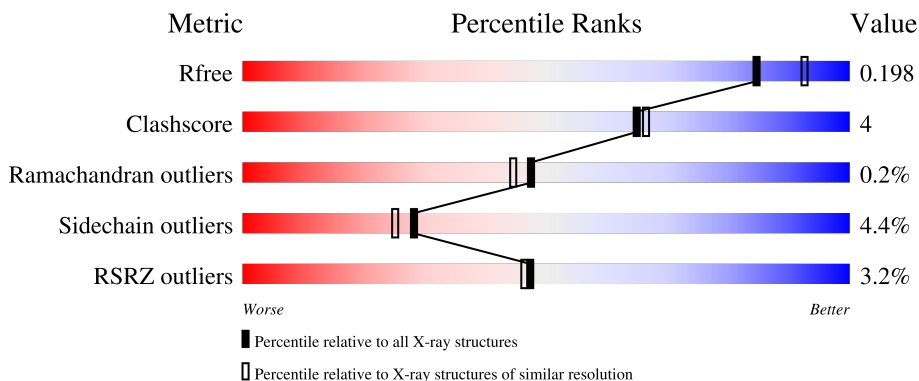
1 Overall quality at a glance

The following experimental techniques were used to determine the structure:

X-RAY DIFFRACTION

The reported resolution of this entry is 2.00 Å.

Percentile scores (ranging between 0-100) for global validation metrics of the entry are shown in the following graphic. The table shows the number of entries on which the scores are based.



Metric	Whole archive (#Entries)	Similar resolution (#Entries, resolution range(Å))
R_{free}	130704	8085 (2.00-2.00)
Clashscore	141614	9178 (2.00-2.00)
Ramachandran outliers	138981	9054 (2.00-2.00)
Sidechain outliers	138945	9053 (2.00-2.00)
RSRZ outliers	127900	7900 (2.00-2.00)

The table below summarises the geometric issues observed across the polymeric chains and their fit to the electron density. The red, orange, yellow and green segments of the lower bar indicate the fraction of residues that contain outliers for ≥ 3 , 2, 1 and 0 types of geometric quality criteria respectively. A grey segment represents the fraction of residues that are not modelled. The numeric value for each fraction is indicated below the corresponding segment, with a dot representing fractions $\leq 5\%$. The upper red bar (where present) indicates the fraction of residues that have poor fit to the electron density. The numeric value is given above the bar.

Mol	Chain	Length	Quality of chain
1	A	411	
1	B	411	
1	C	411	
1	D	411	
1	E	411	

2 Entry composition [i](#)

There are 7 unique types of molecules in this entry. The entry contains 17293 atoms, of which 0 are hydrogens and 0 are deuteriums.

In the tables below, the ZeroOcc column contains the number of atoms modelled with zero occupancy, the AltConf column contains the number of residues with at least one atom in alternate conformation and the Trace column contains the number of residues modelled with at most 2 atoms.

- Molecule 1 is a protein called Vitamin D hydroxylase.

Mol	Chain	Residues	Atoms					ZeroOcc	AltConf	Trace
			Total	C	N	O	S			
1	A	402	3126	1967	552	589	18	0	2	0
1	B	402	3113	1958	549	589	17	0	0	0
1	C	401	3108	1955	548	588	17	0	0	0
1	D	402	3113	1958	549	589	17	0	0	0
1	E	401	3108	1955	548	588	17	0	0	0

There are 60 discrepancies between the modelled and reference sequences:

Chain	Residue	Modelled	Actual	Comment	Reference
A	70	ARG	THR	engineered mutation	UNP C4B644
A	156	LEU	VAL	engineered mutation	UNP C4B644
A	216	MET	GLU	engineered mutation	UNP C4B644
A	384	ARG	GLU	engineered mutation	UNP C4B644
A	404	LEU	-	expression tag	UNP C4B644
A	405	GLU	-	expression tag	UNP C4B644
A	406	HIS	-	expression tag	UNP C4B644
A	407	HIS	-	expression tag	UNP C4B644
A	408	HIS	-	expression tag	UNP C4B644
A	409	HIS	-	expression tag	UNP C4B644
A	410	HIS	-	expression tag	UNP C4B644
A	411	HIS	-	expression tag	UNP C4B644
B	70	ARG	THR	engineered mutation	UNP C4B644
B	156	LEU	VAL	engineered mutation	UNP C4B644
B	216	MET	GLU	engineered mutation	UNP C4B644
B	384	ARG	GLU	engineered mutation	UNP C4B644
B	404	LEU	-	expression tag	UNP C4B644
B	405	GLU	-	expression tag	UNP C4B644
B	406	HIS	-	expression tag	UNP C4B644

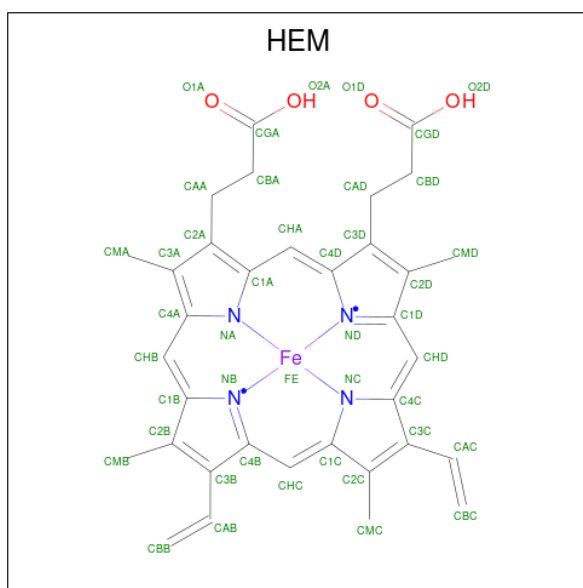
Continued on next page...

Continued from previous page...

Chain	Residue	Modelled	Actual	Comment	Reference
B	407	HIS	-	expression tag	UNP C4B644
B	408	HIS	-	expression tag	UNP C4B644
B	409	HIS	-	expression tag	UNP C4B644
B	410	HIS	-	expression tag	UNP C4B644
B	411	HIS	-	expression tag	UNP C4B644
C	70	ARG	THR	engineered mutation	UNP C4B644
C	156	LEU	VAL	engineered mutation	UNP C4B644
C	216	MET	GLU	engineered mutation	UNP C4B644
C	384	ARG	GLU	engineered mutation	UNP C4B644
C	404	LEU	-	expression tag	UNP C4B644
C	405	GLU	-	expression tag	UNP C4B644
C	406	HIS	-	expression tag	UNP C4B644
C	407	HIS	-	expression tag	UNP C4B644
C	408	HIS	-	expression tag	UNP C4B644
C	409	HIS	-	expression tag	UNP C4B644
C	410	HIS	-	expression tag	UNP C4B644
C	411	HIS	-	expression tag	UNP C4B644
D	70	ARG	THR	engineered mutation	UNP C4B644
D	156	LEU	VAL	engineered mutation	UNP C4B644
D	216	MET	GLU	engineered mutation	UNP C4B644
D	384	ARG	GLU	engineered mutation	UNP C4B644
D	404	LEU	-	expression tag	UNP C4B644
D	405	GLU	-	expression tag	UNP C4B644
D	406	HIS	-	expression tag	UNP C4B644
D	407	HIS	-	expression tag	UNP C4B644
D	408	HIS	-	expression tag	UNP C4B644
D	409	HIS	-	expression tag	UNP C4B644
D	410	HIS	-	expression tag	UNP C4B644
D	411	HIS	-	expression tag	UNP C4B644
E	70	ARG	THR	engineered mutation	UNP C4B644
E	156	LEU	VAL	engineered mutation	UNP C4B644
E	216	MET	GLU	engineered mutation	UNP C4B644
E	384	ARG	GLU	engineered mutation	UNP C4B644
E	404	LEU	-	expression tag	UNP C4B644
E	405	GLU	-	expression tag	UNP C4B644
E	406	HIS	-	expression tag	UNP C4B644
E	407	HIS	-	expression tag	UNP C4B644
E	408	HIS	-	expression tag	UNP C4B644
E	409	HIS	-	expression tag	UNP C4B644
E	410	HIS	-	expression tag	UNP C4B644
E	411	HIS	-	expression tag	UNP C4B644

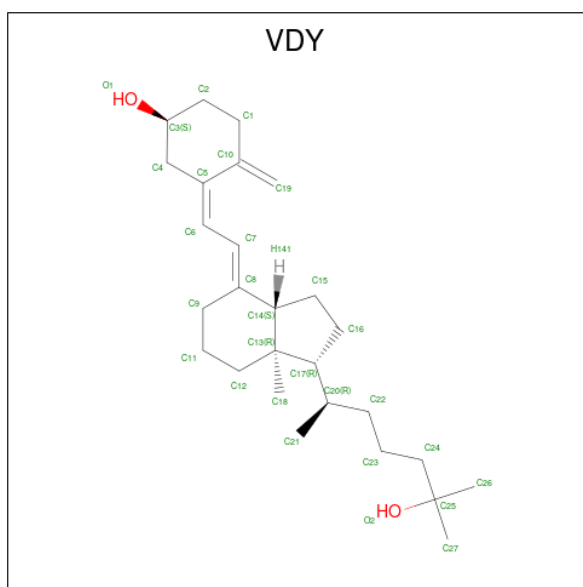
- Molecule 2 is PROTOPORPHYRIN IX CONTAINING FE (three-letter code: HEM) (for-

mula: C₃₄H₃₂FeN₄O₄).



Mol	Chain	Residues	Atoms				ZeroOcc	AltConf	
2	A	1	Total	C	Fe	N	O	0	0
			43	34	1	4	4		
2	B	1	Total	C	Fe	N	O	0	0
			43	34	1	4	4		
2	C	1	Total	C	Fe	N	O	0	0
			43	34	1	4	4		
2	D	1	Total	C	Fe	N	O	0	0
			43	34	1	4	4		
2	E	1	Total	C	Fe	N	O	0	0
			43	34	1	4	4		

- Molecule 3 is 3-{2-[1-(5-HYDROXY-1,5-DIMETHYL-HEXYL)-7A-METHYL-OCTA HYDRO-INDEN-4-YLIDENE]-ETHYLIDENE}-4-METHYLENE-CYCLOHEXANOL (three-letter code: VDY) (formula: C₂₇H₄₄O₂).



Mol	Chain	Residues	Atoms	ZeroOcc	AltConf
3	A	1	Total C O 29 27 2	0	0
3	B	1	Total C O 29 27 2	0	0
3	C	1	Total C O 29 27 2	0	0
3	D	1	Total C O 29 27 2	0	0
3	E	1	Total C O 29 27 2	0	0

- Molecule 4 is CALCIUM ION (three-letter code: CA) (formula: Ca).

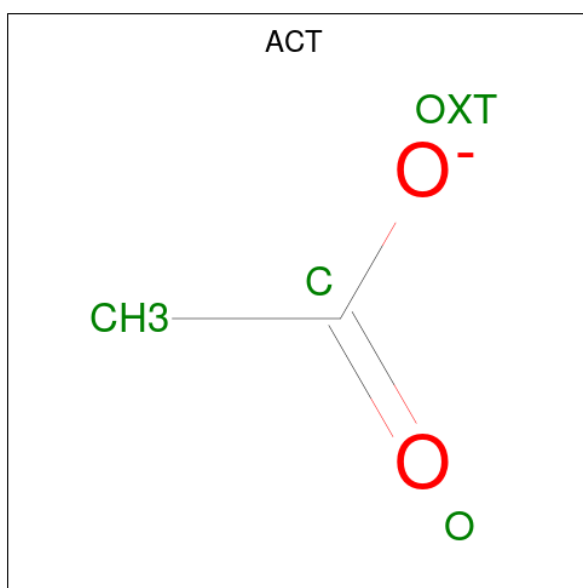
Mol	Chain	Residues	Atoms	ZeroOcc	AltConf
4	A	3	Total Ca 3 3	0	0
4	C	1	Total Ca 1 1	0	0
4	D	1	Total Ca 1 1	0	0
4	E	1	Total Ca 1 1	0	0

- Molecule 5 is GLYCEROL (three-letter code: GOL) (formula: C₃H₈O₃).



Mol	Chain	Residues	Atoms			ZeroOcc	AltConf
5	A	1	Total	C	O	0	0
			6	3	3		
5	A	1	Total	C	O	0	0
			6	3	3		

- Molecule 6 is ACETATE ION (three-letter code: ACT) (formula: $C_2H_3O_2$).



Mol	Chain	Residues	Atoms			ZeroOcc	AltConf
6	A	1	Total	C	O	0	0
			4	2	2		
6	B	1	Total	C	O	0	0
			4	2	2		

Continued on next page...

Continued from previous page...

Mol	Chain	Residues	Atoms	ZeroOcc	AltConf
6	C	1	Total C O 4 2 2	0	0
6	C	1	Total C O 4 2 2	0	0
6	D	1	Total C O 4 2 2	0	0
6	E	1	Total C O 4 2 2	0	0
6	E	1	Total C O 4 2 2	0	0

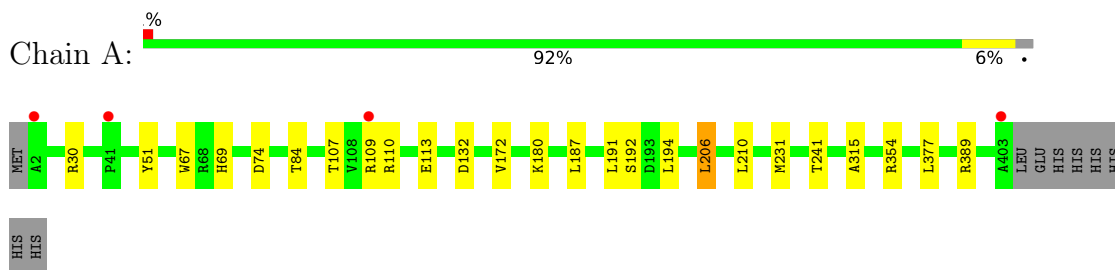
- Molecule 7 is water.

Mol	Chain	Residues	Atoms	ZeroOcc	AltConf
7	A	344	Total O 344 344	0	0
7	B	248	Total O 248 248	0	0
7	C	207	Total O 207 207	0	0
7	D	262	Total O 262 262	0	0
7	E	258	Total O 258 258	0	0

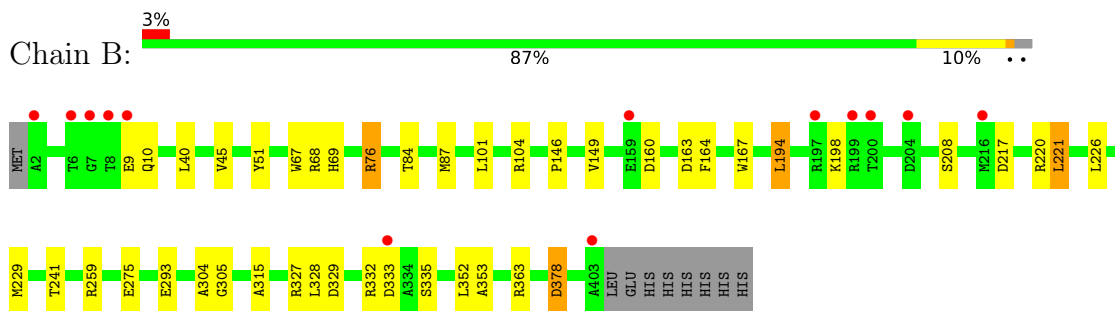
3 Residue-property plots i

These plots are drawn for all protein, RNA, DNA and oligosaccharide chains in the entry. The first graphic for a chain summarises the proportions of the various outlier classes displayed in the second graphic. The second graphic shows the sequence view annotated by issues in geometry and electron density. Residues are color-coded according to the number of geometric quality criteria for which they contain at least one outlier: green = 0, yellow = 1, orange = 2 and red = 3 or more. A red dot above a residue indicates a poor fit to the electron density ($RSRZ > 2$). Stretches of 2 or more consecutive residues without any outlier are shown as a green connector. Residues present in the sample, but not in the model, are shown in grey.

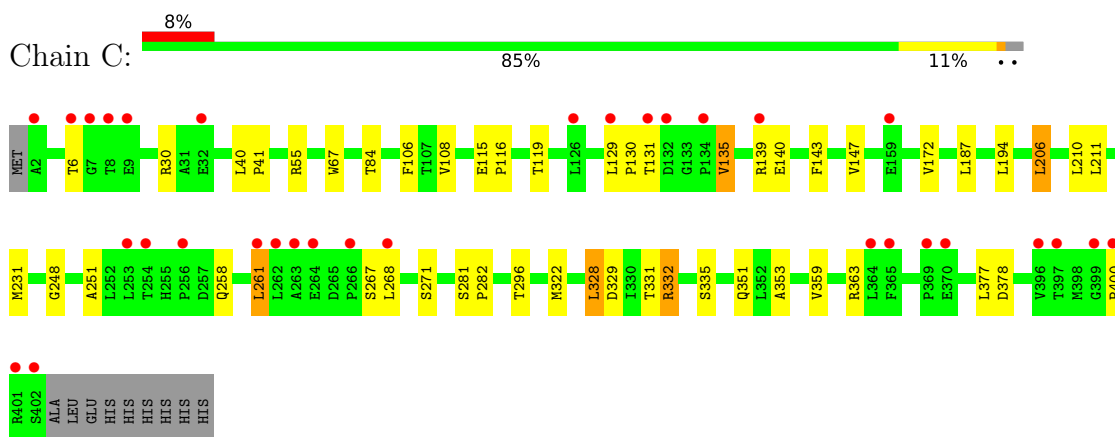
- Molecule 1: Vitamin D hydroxylase



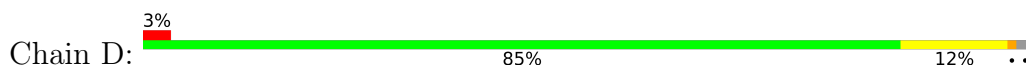
- Molecule 1: Vitamin D hydroxylase

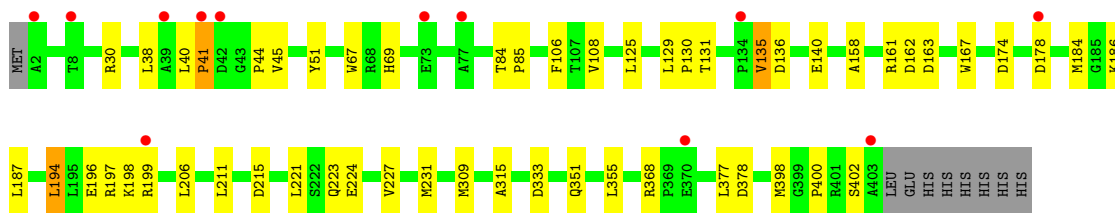


- Molecule 1: Vitamin D hydroxylase

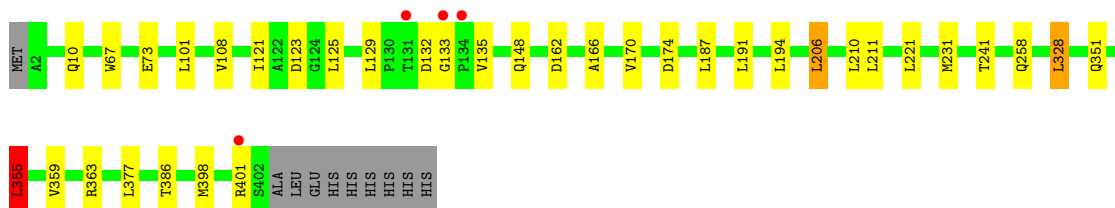
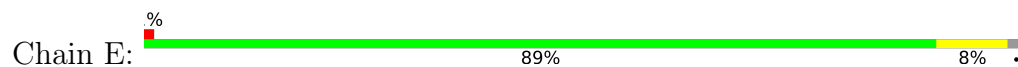


- Molecule 1: Vitamin D hydroxylase





● Molecule 1: Vitamin D hydroxylase



4 Data and refinement statistics

Property	Value	Source
Space group	P 21 21 21	Depositor
Cell constants a, b, c, α , β , γ	77.17Å 171.80Å 189.14Å 90.00° 90.00° 90.00°	Depositor
Resolution (Å)	45.60 – 2.00 45.59 – 2.00	Depositor EDS
% Data completeness (in resolution range)	100.0 (45.60-2.00) 100.0 (45.59-2.00)	Depositor EDS
R_{merge}	0.08	Depositor
R_{sym}	(Not available)	Depositor
$\langle I/\sigma(I) \rangle$ ¹	3.37 (at 2.00Å)	Xtrriage
Refinement program	REFMAC 5.2.0019	Depositor
R, R_{free}	0.197 , 0.234 0.199 , 0.198	Depositor DCC
R_{free} test set	8490 reflections (5.00%)	wwPDB-VP
Wilson B-factor (Å ²)	27.3	Xtrriage
Anisotropy	0.052	Xtrriage
Bulk solvent k_{sol} (e/Å ³), B_{sol} (Å ²)	0.35 , 46.4	EDS
L-test for twinning ²	$\langle L \rangle = 0.50$, $\langle L^2 \rangle = 0.34$	Xtrriage
Estimated twinning fraction	No twinning to report.	Xtrriage
F_o, F_c correlation	0.95	EDS
Total number of atoms	17293	wwPDB-VP
Average B, all atoms (Å ²)	30.0	wwPDB-VP

Xtrriage's analysis on translational NCS is as follows: *The largest off-origin peak in the Patterson function is 2.81% of the height of the origin peak. No significant pseudotranslation is detected.*

¹Intensities estimated from amplitudes.

²Theoretical values of $\langle |L| \rangle$, $\langle L^2 \rangle$ for acentric reflections are 0.5, 0.333 respectively for untwinned datasets, and 0.375, 0.2 for perfectly twinned datasets.

5 Model quality [i](#)

5.1 Standard geometry [i](#)

Bond lengths and bond angles in the following residue types are not validated in this section: VDY, CA, ACT, GOL, HEM

The Z score for a bond length (or angle) is the number of standard deviations the observed value is removed from the expected value. A bond length (or angle) with $|Z| > 5$ is considered an outlier worth inspection. RMSZ is the root-mean-square of all Z scores of the bond lengths (or angles).

Mol	Chain	Bond lengths		Bond angles	
		RMSZ	# Z >5	RMSZ	# Z >5
1	A	0.72	0/3198	0.77	1/4349 (0.0%)
1	B	0.63	1/3179 (0.0%)	0.70	0/4325
1	C	0.62	0/3174	0.70	0/4318
1	D	0.65	0/3179	0.72	0/4325
1	E	0.64	0/3174	0.73	2/4318 (0.0%)
All	All	0.65	1/15904 (0.0%)	0.73	3/21635 (0.0%)

All (1) bond length outliers are listed below:

Mol	Chain	Res	Type	Atoms	Z	Observed(Å)	Ideal(Å)
1	B	378	ASP	CB-CG	5.04	1.62	1.51

All (3) bond angle outliers are listed below:

Mol	Chain	Res	Type	Atoms	Z	Observed(°)	Ideal(°)
1	E	132	ASP	CB-CG-OD1	5.31	123.08	118.30
1	A	30	ARG	NE-CZ-NH2	-5.17	117.71	120.30
1	E	355	LEU	CA-CB-CG	5.00	126.80	115.30

There are no chirality outliers.

There are no planarity outliers.

5.2 Too-close contacts [i](#)

In the following table, the Non-H and H(model) columns list the number of non-hydrogen atoms and hydrogen atoms in the chain respectively. The H(added) column lists the number of hydrogen atoms added and optimized by MolProbity. The Clashes column lists the number of clashes within the asymmetric unit, whereas Symm-Clashes lists symmetry-related clashes.

Mol	Chain	Non-H	H(model)	H(added)	Clashes	Symm-Clashes
1	A	3126	0	3117	14	0
1	B	3113	0	3095	25	0
1	C	3108	0	3090	29	0
1	D	3113	0	3095	28	0
1	E	3108	0	3090	15	0
2	A	43	0	30	5	0
2	B	43	0	30	4	0
2	C	43	0	30	7	0
2	D	43	0	30	1	0
2	E	43	0	30	3	0
3	A	29	0	44	5	0
3	B	29	0	44	3	0
3	C	29	0	44	1	0
3	D	29	0	44	7	0
3	E	29	0	44	3	0
4	A	3	0	0	0	0
4	C	1	0	0	0	0
4	D	1	0	0	0	0
4	E	1	0	0	0	0
5	A	12	0	14	0	0
6	A	4	0	3	0	0
6	B	4	0	3	0	0
6	C	8	0	6	0	0
6	D	4	0	3	0	0
6	E	8	0	6	0	0
7	A	344	0	0	2	0
7	B	248	0	0	2	0
7	C	207	0	0	1	0
7	D	262	0	0	2	0
7	E	258	0	0	0	0
All	All	17293	0	15892	131	0

The all-atom clashscore is defined as the number of clashes found per 1000 atoms (including hydrogen atoms). The all-atom clashscore for this structure is 4.

All (131) close contacts within the same asymmetric unit are listed below, sorted by their clash magnitude.

Atom-1	Atom-2	Interatomic distance (Å)	Clash overlap (Å)
2:B:412:HEM:HBB2	2:B:412:HEM:HHC	1.42	0.98
1:C:353:ALA:CB	2:C:412:HEM:HBB2	1.94	0.97
1:C:353:ALA:HB1	2:C:412:HEM:CBB	1.95	0.96
1:D:40:LEU:HB3	1:D:41:PRO:HD2	1.50	0.93

Continued on next page...

Continued from previous page...

Atom-1	Atom-2	Interatomic distance (Å)	Clash overlap (Å)
1:A:187:LEU:HD13	1:A:231[A]:MET:HG3	1.57	0.86
1:A:107:THR:OG1	1:A:110:ARG:HG2	1.76	0.85
1:A:241:THR:HA	2:A:412:HEM:HBB1	1.58	0.84
1:C:187:LEU:HD13	1:C:231:MET:HG3	1.63	0.80
1:C:353:ALA:HB2	2:C:412:HEM:HBB2	1.60	0.80
1:C:353:ALA:HB1	2:C:412:HEM:HBB2	1.60	0.77
1:E:241:THR:HA	2:E:412:HEM:HBB1	1.66	0.76
1:D:135:VAL:HG21	1:D:398:MET:HG2	1.69	0.75
1:C:40:LEU:HB3	1:C:41:PRO:HD2	1.69	0.75
1:C:359:VAL:O	1:C:363:ARG:HG2	1.88	0.72
3:B:6178:VDY:H91	3:B:6178:VDY:H182	1.69	0.72
2:E:412:HEM:HHC	2:E:412:HEM:HBB2	1.76	0.67
1:D:184:MET:HE3	3:D:6178:VDY:H241	1.78	0.65
3:D:6178:VDY:H182	3:D:6178:VDY:H91	1.77	0.65
1:D:108:VAL:HA	1:D:351:GLN:HG2	1.80	0.63
1:D:85:PRO:HG3	1:D:224:GLU:HG3	1.79	0.63
3:B:6178:VDY:H182	3:B:6178:VDY:C9	2.29	0.62
1:B:363:ARG:HD3	7:B:946:HOH:O	1.99	0.62
1:E:191:LEU:HD12	1:E:231:MET:HG2	1.81	0.62
1:C:329:ASP:OD1	1:C:331:THR:HG22	1.99	0.61
1:D:69:HIS:HD2	7:D:486:HOH:O	1.84	0.59
1:E:359:VAL:O	1:E:363:ARG:HG2	2.01	0.59
1:B:40:LEU:HD12	1:B:45:VAL:CG1	2.34	0.58
1:D:40:LEU:HB3	1:D:41:PRO:CD	2.30	0.58
1:B:40:LEU:HD12	1:B:45:VAL:HG12	1.85	0.58
3:A:6178:VDY:H182	3:A:6178:VDY:H91	1.87	0.57
1:B:353:ALA:HB1	2:B:412:HEM:CBB	2.35	0.57
1:E:121:ILE:HD13	1:E:148:GLN:HG2	1.87	0.56
1:B:87:MET:CE	1:B:229:MET:CE	2.83	0.56
3:D:6178:VDY:H182	3:D:6178:VDY:C9	2.34	0.56
1:C:353:ALA:CB	2:C:412:HEM:CBB	2.62	0.55
1:A:187:LEU:HD13	1:A:231[A]:MET:CG	2.31	0.55
1:C:131:THR:HG23	1:C:400:PRO:HA	1.89	0.55
1:C:258:GLN:HG3	1:C:328:LEU:HD13	1.88	0.55
1:A:69:HIS:HD2	7:A:565:HOH:O	1.90	0.54
1:B:329:ASP:HB3	1:B:332:ARG:HG3	1.90	0.54
1:D:38:LEU:O	1:D:44:PRO:HA	2.07	0.54
1:D:30:ARG:NH2	7:D:475:HOH:O	2.39	0.54
1:A:241:THR:HA	2:A:412:HEM:CBB	2.32	0.53
1:C:296:THR:HG21	1:E:133:GLY:HA2	1.91	0.53
3:E:6178:VDY:H212	3:E:6178:VDY:H121	1.90	0.53

Continued on next page...

Continued from previous page...

Atom-1	Atom-2	Interatomic distance (Å)	Clash overlap (Å)
1:E:174:ASP:OD1	1:E:386:THR:HG23	2.10	0.52
1:E:101:LEU:HD21	1:E:221:LEU:HD22	1.91	0.52
1:A:191:LEU:HD12	1:A:231[B]:MET:HG3	1.92	0.51
1:D:196:GLU:O	1:D:199:ARG:HG3	2.12	0.49
1:D:106:PHE:CE2	2:D:412:HEM:HBC1	2.47	0.49
1:C:130:PRO:HG2	1:C:135:VAL:CG1	2.43	0.49
3:D:6178:VDY:H92	3:D:6178:VDY:C5	2.40	0.49
3:E:6178:VDY:H91	3:E:6178:VDY:H182	1.93	0.49
1:E:241:THR:CA	2:E:412:HEM:HBB1	2.38	0.49
1:B:217:ASP:HB2	1:B:220:ARG:HH21	1.77	0.49
3:E:6178:VDY:H182	3:E:6178:VDY:C9	2.43	0.49
3:A:6178:VDY:C5	3:A:6178:VDY:H92	2.41	0.48
1:B:87:MET:HE3	1:B:229:MET:CE	2.44	0.48
1:B:68:ARG:O	1:B:76:ARG:HD2	2.14	0.48
1:C:106:PHE:CE2	2:C:412:HEM:HBC1	2.48	0.48
1:A:241:THR:CA	2:A:412:HEM:HBB1	2.38	0.48
1:D:40:LEU:CB	1:D:41:PRO:HD2	2.30	0.48
1:B:353:ALA:CB	2:B:412:HEM:CBB	2.92	0.48
3:C:6178:VDY:H92	3:C:6178:VDY:C5	2.43	0.47
2:A:412:HEM:HHC	2:A:412:HEM:HBB2	1.96	0.47
1:D:199:ARG:HH22	1:D:215:ASP:CG	2.18	0.47
1:E:206:LEU:HD22	1:E:210:LEU:HG	1.96	0.46
1:B:217:ASP:HB2	1:B:220:ARG:NH2	2.30	0.46
1:E:351:GLN:HG3	1:E:355:LEU:HD22	1.96	0.46
1:B:259:ARG:HD2	7:B:704:HOH:O	2.15	0.46
1:C:119:THR:HG23	1:C:363:ARG:HE	1.79	0.46
1:D:51:TYR:HA	1:D:315:ALA:HB1	1.98	0.46
1:D:45:VAL:HG11	1:D:309:MET:HG3	1.97	0.46
1:D:85:PRO:CG	1:D:224:GLU:HG3	2.45	0.46
1:D:194:LEU:HD22	1:D:198:LYS:HE2	1.98	0.46
1:D:368:ARG:NH2	1:D:398:MET:HB3	2.31	0.46
1:C:30:ARG:NH2	7:C:497:HOH:O	2.48	0.45
1:B:327:ARG:O	1:B:332:ARG:NH1	2.49	0.45
1:C:206:LEU:HD22	1:C:210:LEU:HG	1.97	0.45
1:A:241:THR:CA	2:A:412:HEM:CBB	2.94	0.45
1:C:261:LEU:HD22	1:C:268:LEU:CD1	2.47	0.45
1:D:125:LEU:O	1:D:129:LEU:HG	2.16	0.45
1:C:322:MET:SD	1:C:332:ARG:HD3	2.57	0.45
1:E:123:ASP:OD1	1:E:363:ARG:NH2	2.47	0.45
3:A:6178:VDY:H182	3:A:6178:VDY:C9	2.46	0.45
1:B:164:PHE:HA	1:B:167:TRP:CE3	2.52	0.45

Continued on next page...

Continued from previous page...

Atom-1	Atom-2	Interatomic distance (Å)	Clash overlap (Å)
1:C:115:GLU:N	1:C:116:PRO:CD	2.79	0.45
1:C:261:LEU:HD22	1:C:268:LEU:HD11	1.98	0.44
1:D:196:GLU:HA	1:D:199:ARG:HG3	1.99	0.44
1:B:194:LEU:O	1:B:198:LYS:HG3	2.17	0.44
1:D:136:ASP:O	1:D:140:GLU:CG	2.65	0.44
1:B:241:THR:HA	2:B:412:HEM:HBB1	2.00	0.44
3:A:6178:VDY:H192	3:A:6178:VDY:H61	1.55	0.44
1:D:227:VAL:HG12	1:D:231:MET:HE2	1.99	0.44
1:D:131:THR:HG23	1:D:400:PRO:HA	2.00	0.43
1:B:87:MET:CE	1:B:229:MET:HE1	2.48	0.43
1:C:329:ASP:O	1:C:332:ARG:HB2	2.18	0.43
1:C:130:PRO:HG2	1:C:135:VAL:HG12	2.00	0.43
3:B:6178:VDY:C5	3:B:6178:VDY:H92	2.41	0.43
1:C:143:PHE:CZ	1:C:147:VAL:HG21	2.54	0.43
1:C:139:ARG:NH2	1:C:140:GLU:OE1	2.51	0.43
1:D:167:TRP:NE1	1:D:186:LYS:HD2	2.34	0.43
1:B:221:LEU:HD13	1:B:226:LEU:HB2	2.01	0.43
1:C:129:LEU:HA	1:C:130:PRO:HD2	1.79	0.43
1:A:110:ARG:O	1:A:113:GLU:HG2	2.19	0.43
1:B:40:LEU:CD1	1:B:45:VAL:CG1	2.97	0.42
1:B:160:ASP:O	1:B:163:ASP:HB2	2.19	0.42
1:E:231:MET:HE3	1:E:231:MET:HB3	1.69	0.42
1:A:354:ARG:NH1	7:A:572:HOH:O	2.42	0.42
1:B:149:VAL:HG11	1:B:352:LEU:HD11	2.01	0.42
1:D:129:LEU:HA	1:D:130:PRO:HD3	1.92	0.42
1:B:51:TYR:HA	1:B:315:ALA:HB1	2.02	0.42
1:B:293:GLU:HA	1:B:304:ALA:HB2	2.01	0.41
1:C:108:VAL:HA	1:C:351:GLN:HG2	2.02	0.41
1:C:248:GLY:O	1:C:251:ALA:HB3	2.20	0.41
1:B:69:HIS:O	1:B:305:GLY:HA2	2.19	0.41
1:D:158:ALA:HA	1:D:161:ARG:HG3	2.02	0.41
1:A:206:LEU:HD22	1:A:210:LEU:HG	2.02	0.41
3:D:6178:VDY:H192	3:D:6178:VDY:H61	1.74	0.41
3:D:6178:VDY:H212	3:D:6178:VDY:H121	2.02	0.41
1:D:135:VAL:HG21	1:D:398:MET:CG	2.45	0.41
1:D:161:ARG:HE	1:D:161:ARG:HB3	1.70	0.41
2:C:412:HEM:HBB2	2:C:412:HEM:HHC	2.02	0.41
1:E:125:LEU:O	1:E:129:LEU:HG	2.21	0.41
1:C:281:SER:HA	1:C:282:PRO:HD3	1.95	0.40
3:D:6178:VDY:H211	3:D:6178:VDY:H231	1.91	0.40
1:A:180:LYS:HB3	3:A:6178:VDY:H261	2.03	0.40

Continued on next page...

Continued from previous page...

Atom-1	Atom-2	Interatomic distance (Å)	Clash overlap (Å)
1:B:275:GLU:HG3	1:B:328:LEU:HD12	2.04	0.40
1:E:258:GLN:HG3	1:E:328:LEU:HD13	2.02	0.40
1:E:166:ALA:O	1:E:170:VAL:HG23	2.22	0.40
1:A:51:TYR:HA	1:A:315:ALA:HB1	2.04	0.40

There are no symmetry-related clashes.

5.3 Torsion angles [i](#)

5.3.1 Protein backbone [i](#)

In the following table, the Percentiles column shows the percent Ramachandran outliers of the chain as a percentile score with respect to all X-ray entries followed by that with respect to entries of similar resolution.

The Analysed column shows the number of residues for which the backbone conformation was analysed, and the total number of residues.

Mol	Chain	Analysed	Favoured	Allowed	Outliers	Percentiles	
1	A	402/411 (98%)	389 (97%)	12 (3%)	1 (0%)	47	44
1	B	400/411 (97%)	384 (96%)	16 (4%)	0	100	100
1	C	399/411 (97%)	385 (96%)	14 (4%)	0	100	100
1	D	400/411 (97%)	382 (96%)	16 (4%)	2 (0%)	29	23
1	E	399/411 (97%)	387 (97%)	12 (3%)	0	100	100
All	All	2000/2055 (97%)	1927 (96%)	70 (4%)	3 (0%)	47	44

All (3) Ramachandran outliers are listed below:

Mol	Chain	Res	Type
1	A	74	ASP
1	D	174	ASP
1	D	41	PRO

5.3.2 Protein sidechains [i](#)

In the following table, the Percentiles column shows the percent sidechain outliers of the chain as a percentile score with respect to all X-ray entries followed by that with respect to entries of similar resolution.

The Analysed column shows the number of residues for which the sidechain conformation was analysed, and the total number of residues.

Mol	Chain	Analysed	Rotameric	Outliers	Percentiles	
1	A	336/343 (98%)	326 (97%)	10 (3%)	41	41
1	B	334/343 (97%)	320 (96%)	14 (4%)	30	27
1	C	334/343 (97%)	317 (95%)	17 (5%)	24	19
1	D	334/343 (97%)	316 (95%)	18 (5%)	22	18
1	E	334/343 (97%)	319 (96%)	15 (4%)	27	24
All	All	1672/1715 (98%)	1598 (96%)	74 (4%)	28	25

All (74) residues with a non-rotameric sidechain are listed below:

Mol	Chain	Res	Type
1	A	67	TRP
1	A	84	THR
1	A	109	ARG
1	A	132	ASP
1	A	172	VAL
1	A	192	SER
1	A	194	LEU
1	A	206	LEU
1	A	377	LEU
1	A	389	ARG
1	B	9	GLU
1	B	10	GLN
1	B	67	TRP
1	B	76	ARG
1	B	84	THR
1	B	101	LEU
1	B	104	ARG
1	B	146	PRO
1	B	194	LEU
1	B	208	SER
1	B	221	LEU
1	B	333	ASP
1	B	335	SER
1	B	378	ASP
1	C	6	THR
1	C	55	ARG
1	C	67	TRP
1	C	84	THR

Continued on next page...

Continued from previous page...

Mol	Chain	Res	Type
1	C	135	VAL
1	C	172	VAL
1	C	194	LEU
1	C	206	LEU
1	C	211	LEU
1	C	261	LEU
1	C	267	SER
1	C	271	SER
1	C	328	LEU
1	C	332	ARG
1	C	335	SER
1	C	377	LEU
1	C	378	ASP
1	D	67	TRP
1	D	84	THR
1	D	135	VAL
1	D	162	ASP
1	D	163	ASP
1	D	178	ASP
1	D	187	LEU
1	D	194	LEU
1	D	197	ARG
1	D	206	LEU
1	D	211	LEU
1	D	221	LEU
1	D	223	GLN
1	D	333	ASP
1	D	355	LEU
1	D	377	LEU
1	D	378	ASP
1	D	402	SER
1	E	10	GLN
1	E	67	TRP
1	E	73	GLU
1	E	108	VAL
1	E	135	VAL
1	E	162	ASP
1	E	187	LEU
1	E	194	LEU
1	E	206	LEU
1	E	211	LEU
1	E	328	LEU

Continued on next page...

Continued from previous page...

Mol	Chain	Res	Type
1	E	355	LEU
1	E	377	LEU
1	E	398	MET
1	E	401	ARG

Sometimes sidechains can be flipped to improve hydrogen bonding and reduce clashes. All (8) such sidechains are listed below:

Mol	Chain	Res	Type
1	A	69	HIS
1	C	69	HIS
1	C	285	GLN
1	D	69	HIS
1	D	223	GLN
1	E	10	GLN
1	E	181	ASN
1	E	223	GLN

5.3.3 RNA [i](#)

There are no RNA molecules in this entry.

5.4 Non-standard residues in protein, DNA, RNA chains [i](#)

There are no non-standard protein/DNA/RNA residues in this entry.

5.5 Carbohydrates [i](#)

There are no monosaccharides in this entry.

5.6 Ligand geometry [i](#)

Of 25 ligands modelled in this entry, 6 are monoatomic - leaving 19 for Mogul analysis.

In the following table, the Counts columns list the number of bonds (or angles) for which Mogul statistics could be retrieved, the number of bonds (or angles) that are observed in the model and the number of bonds (or angles) that are defined in the Chemical Component Dictionary. The Link column lists molecule types, if any, to which the group is linked. The Z score for a bond length (or angle) is the number of standard deviations the observed value is removed from the expected value. A bond length (or angle) with $|Z| > 2$ is considered an outlier worth inspection. RMSZ is the root-mean-square of all Z scores of the bond lengths (or angles).

Mol	Type	Chain	Res	Link	Bond lengths			Bond angles		
					Counts	RMSZ	# Z > 2	Counts	RMSZ	# Z > 2
5	GOL	A	3002	4	5,5,5	0.45	0	5,5,5	0.59	0
6	ACT	E	4005	4	3,3,3	0.74	0	3,3,3	1.41	0
5	GOL	A	3001	-	5,5,5	0.38	0	5,5,5	0.39	0
6	ACT	C	4004	4	3,3,3	0.67	0	3,3,3	1.42	0
2	HEM	B	412	1,3	41,50,50	1.98	8 (19%)	45,82,82	2.14	12 (26%)
3	VDY	D	6178	2	31,31,31	0.60	0	46,46,46	3.24	11 (23%)
3	VDY	C	6178	2	31,31,31	0.75	0	46,46,46	3.71	14 (30%)
3	VDY	B	6178	2	31,31,31	0.62	0	46,46,46	3.60	12 (26%)
2	HEM	C	412	1,3	41,50,50	1.80	7 (17%)	45,82,82	1.78	13 (28%)
6	ACT	C	4007	-	3,3,3	0.77	0	3,3,3	1.42	0
3	VDY	A	6178	2	31,31,31	0.73	0	46,46,46	3.76	13 (28%)
6	ACT	B	4009	-	3,3,3	0.96	0	3,3,3	0.63	0
3	VDY	E	6178	2	31,31,31	0.66	0	46,46,46	3.66	12 (26%)
2	HEM	E	412	1,3	41,50,50	2.02	10 (24%)	45,82,82	2.15	17 (37%)
2	HEM	A	412	1,3	41,50,50	2.02	11 (26%)	45,82,82	2.29	16 (35%)
6	ACT	D	4001	-	3,3,3	0.81	0	3,3,3	1.14	0
6	ACT	E	4008	-	3,3,3	0.80	0	3,3,3	1.31	0
6	ACT	A	4006	-	3,3,3	0.90	0	3,3,3	1.46	0
2	HEM	D	412	1,3	41,50,50	1.91	6 (14%)	45,82,82	1.85	14 (31%)

In the following table, the Chirals column lists the number of chiral outliers, the number of chiral centers analysed, the number of these observed in the model and the number defined in the Chemical Component Dictionary. Similar counts are reported in the Torsion and Rings columns. '2' means no outliers of that kind were identified.

Mol	Type	Chain	Res	Link	Chirals	Torsions	Rings
5	GOL	A	3002	4	-	2/4/4/4	-
2	HEM	A	412	1,3	-	0/12/54/54	-
3	VDY	B	6178	2	-	5/16/57/57	0/3/3/3
2	HEM	C	412	1,3	-	0/12/54/54	-
3	VDY	E	6178	2	-	5/16/57/57	0/3/3/3
2	HEM	B	412	1,3	-	1/12/54/54	-
3	VDY	A	6178	2	-	4/16/57/57	0/3/3/3
5	GOL	A	3001	-	-	0/4/4/4	-
3	VDY	C	6178	2	-	4/16/57/57	0/3/3/3
2	HEM	E	412	1,3	-	0/12/54/54	-
3	VDY	D	6178	2	-	5/16/57/57	0/3/3/3
2	HEM	D	412	1,3	-	0/12/54/54	-

All (42) bond length outliers are listed below:

Mol	Chain	Res	Type	Atoms	Z	Observed(Å)	Ideal(Å)
2	B	412	HEM	C3D-C2D	7.76	1.53	1.36
2	E	412	HEM	C3D-C2D	7.36	1.52	1.36
2	D	412	HEM	C3D-C2D	7.35	1.52	1.36
2	A	412	HEM	C3D-C2D	6.99	1.51	1.36
2	C	412	HEM	C3D-C2D	6.63	1.50	1.36
2	E	412	HEM	C3C-C2C	-4.86	1.33	1.40
2	A	412	HEM	C3C-C2C	-4.80	1.33	1.40
2	D	412	HEM	C3C-C2C	-4.78	1.33	1.40
2	C	412	HEM	C3C-C2C	-3.87	1.35	1.40
2	B	412	HEM	C3C-CAC	3.83	1.55	1.47
2	B	412	HEM	C3C-C2C	-3.72	1.35	1.40
2	A	412	HEM	C3C-CAC	3.72	1.55	1.47
2	E	412	HEM	C3C-CAC	3.65	1.55	1.47
2	D	412	HEM	C3C-CAC	3.14	1.54	1.47
2	E	412	HEM	FE-ND	3.13	2.12	1.96
2	A	412	HEM	FE-ND	3.09	2.12	1.96
2	C	412	HEM	C3C-CAC	3.07	1.54	1.47
2	A	412	HEM	CAB-C3B	3.02	1.55	1.47
2	A	412	HEM	CMD-C2D	2.99	1.57	1.50
2	D	412	HEM	CAB-C3B	2.97	1.55	1.47
2	E	412	HEM	CAB-C3B	2.95	1.55	1.47
2	C	412	HEM	CAB-C3B	2.90	1.55	1.47
2	B	412	HEM	FE-ND	2.86	2.11	1.96
2	E	412	HEM	CMD-C2D	2.78	1.56	1.50
2	E	412	HEM	FE-NB	2.74	2.10	1.96
2	E	412	HEM	C3B-C2B	-2.67	1.31	1.37
2	B	412	HEM	FE-NB	2.62	2.09	1.96
2	C	412	HEM	FE-ND	2.60	2.09	1.96
2	A	412	HEM	FE-NB	2.59	2.09	1.96
2	B	412	HEM	CAA-C2A	2.55	1.55	1.52
2	B	412	HEM	CAB-C3B	2.51	1.54	1.47
2	E	412	HEM	CAA-C2A	2.49	1.55	1.52
2	D	412	HEM	FE-NB	2.43	2.08	1.96
2	B	412	HEM	CMB-C2B	2.38	1.55	1.50
2	C	412	HEM	FE-NB	2.36	2.08	1.96
2	D	412	HEM	CMD-C2D	2.28	1.55	1.50
2	A	412	HEM	CMB-C2B	2.26	1.55	1.50
2	E	412	HEM	CMC-C2C	2.18	1.56	1.51
2	A	412	HEM	CAA-C2A	2.11	1.55	1.52
2	A	412	HEM	CHB-C1B	2.09	1.40	1.35
2	C	412	HEM	CMD-C2D	2.07	1.55	1.50
2	A	412	HEM	CHA-C4D	2.02	1.40	1.35

All (134) bond angle outliers are listed below:

Mol	Chain	Res	Type	Atoms	Z	Observed(°)	Ideal(°)
3	E	6178	VDY	C6-C5-C10	-14.86	108.75	125.18
3	A	6178	VDY	C6-C5-C10	-14.63	109.00	125.18
3	C	6178	VDY	C6-C5-C10	-14.54	109.10	125.18
3	B	6178	VDY	C6-C5-C10	-13.78	109.94	125.18
3	D	6178	VDY	C6-C5-C10	-12.66	111.18	125.18
3	B	6178	VDY	C6-C7-C8	-12.57	107.21	126.20
3	A	6178	VDY	C6-C7-C8	-11.99	108.09	126.20
3	C	6178	VDY	C6-C7-C8	-11.38	109.02	126.20
3	E	6178	VDY	C6-C7-C8	-11.16	109.35	126.20
3	D	6178	VDY	C6-C7-C8	-10.43	110.45	126.20
3	C	6178	VDY	C7-C6-C5	9.75	142.41	126.54
3	A	6178	VDY	C7-C6-C5	9.06	141.29	126.54
3	E	6178	VDY	C7-C6-C5	9.04	141.27	126.54
3	B	6178	VDY	C7-C6-C5	8.84	140.94	126.54
3	A	6178	VDY	C4-C5-C10	8.62	124.19	113.82
3	C	6178	VDY	C4-C5-C10	7.94	123.37	113.82
3	E	6178	VDY	C4-C5-C10	7.62	122.99	113.82
2	E	412	HEM	C4D-ND-C1D	7.50	112.82	105.07
3	D	6178	VDY	C4-C5-C10	7.46	122.80	113.82
3	B	6178	VDY	C4-C5-C10	7.43	122.76	113.82
2	B	412	HEM	C4D-ND-C1D	6.94	112.24	105.07
2	A	412	HEM	C4D-ND-C1D	6.85	112.14	105.07
3	D	6178	VDY	C7-C6-C5	6.71	137.46	126.54
3	D	6178	VDY	C9-C8-C7	-6.31	118.09	125.26
2	C	412	HEM	C4D-ND-C1D	5.52	110.77	105.07
3	B	6178	VDY	C9-C8-C7	-5.44	119.08	125.26
3	A	6178	VDY	C15-C14-C8	-5.33	114.21	120.63
3	E	6178	VDY	C9-C8-C7	-5.29	119.26	125.26
2	B	412	HEM	C4B-CHC-C1C	5.16	129.37	122.56
2	A	412	HEM	C1B-NB-C4B	4.96	110.19	105.07
2	D	412	HEM	C4D-ND-C1D	4.81	110.04	105.07
3	C	6178	VDY	C15-C14-C8	-4.79	114.86	120.63
3	A	6178	VDY	C9-C8-C7	-4.58	120.06	125.26
2	B	412	HEM	CMA-C3A-C4A	-4.42	121.67	128.46
3	E	6178	VDY	C4-C5-C6	4.36	128.25	120.85
2	A	412	HEM	C3B-C2B-C1B	4.25	109.64	106.49
3	B	6178	VDY	C15-C14-C8	-4.07	115.73	120.63
3	C	6178	VDY	C9-C8-C7	-4.05	120.67	125.26
3	C	6178	VDY	C4-C5-C6	3.93	127.52	120.85
2	A	412	HEM	C4C-CHD-C1D	3.84	127.63	122.56
3	B	6178	VDY	C4-C5-C6	3.79	127.29	120.85
3	E	6178	VDY	C19-C10-C5	-3.67	118.61	122.99

Continued on next page...

Continued from previous page...

Mol	Chain	Res	Type	Atoms	Z	Observed(°)	Ideal(°)
3	C	6178	VDY	C19-C10-C5	-3.63	118.65	122.99
3	A	6178	VDY	C2-C3-C4	3.61	115.26	110.31
2	A	412	HEM	C4B-CHC-C1C	3.61	127.32	122.56
2	B	412	HEM	C4C-CHD-C1D	3.60	127.31	122.56
2	E	412	HEM	CHD-C1D-ND	3.55	128.29	124.43
2	E	412	HEM	C1B-NB-C4B	3.53	108.72	105.07
2	D	412	HEM	C4C-CHD-C1D	3.52	127.20	122.56
2	D	412	HEM	C3B-C2B-C1B	3.52	109.10	106.49
3	A	6178	VDY	C4-C5-C6	3.51	126.81	120.85
2	B	412	HEM	C1B-NB-C4B	3.50	108.69	105.07
2	E	412	HEM	C4C-CHD-C1D	3.47	127.13	122.56
2	A	412	HEM	C2B-C1B-NB	-3.41	105.80	109.84
3	E	6178	VDY	C15-C14-C8	-3.38	116.56	120.63
2	A	412	HEM	CHD-C1D-ND	3.37	128.09	124.43
2	D	412	HEM	C2C-C3C-C4C	3.34	109.23	106.90
3	D	6178	VDY	C19-C10-C5	-3.34	119.00	122.99
3	A	6178	VDY	C19-C10-C5	-3.32	119.03	122.99
2	C	412	HEM	C1B-NB-C4B	3.22	108.40	105.07
2	C	412	HEM	CBD-CAD-C3D	-3.19	103.76	112.63
3	A	6178	VDY	C18-C13-C14	3.18	115.40	110.24
3	E	6178	VDY	C3-C4-C5	-3.17	108.08	112.69
2	D	412	HEM	CMA-C3A-C4A	-3.15	123.62	128.46
2	A	412	HEM	CBA-CAA-C2A	-3.15	107.25	112.62
2	B	412	HEM	C4B-C3B-C2B	3.13	109.60	107.11
3	D	6178	VDY	C13-C14-C8	-3.09	108.10	113.13
2	E	412	HEM	C4B-CHC-C1C	3.09	126.63	122.56
3	C	6178	VDY	C3-C4-C5	-3.06	108.24	112.69
3	D	6178	VDY	C4-C5-C6	3.03	126.00	120.85
3	C	6178	VDY	C1-C10-C5	3.02	119.21	114.54
2	E	412	HEM	C3B-C2B-C1B	3.01	108.72	106.49
3	A	6178	VDY	C3-C4-C5	-2.96	108.39	112.69
2	B	412	HEM	CMA-C3A-C2A	2.93	130.46	124.94
2	D	412	HEM	C1B-NB-C4B	2.90	108.07	105.07
3	D	6178	VDY	C3-C4-C5	-2.89	108.48	112.69
3	E	6178	VDY	C2-C3-C4	2.87	114.23	110.31
3	D	6178	VDY	C1-C10-C5	2.83	118.91	114.54
3	A	6178	VDY	C1-C10-C5	2.82	118.89	114.54
3	B	6178	VDY	C1-C10-C5	2.81	118.87	114.54
3	E	6178	VDY	C1-C10-C5	2.81	118.87	114.54
2	C	412	HEM	C4C-CHD-C1D	2.78	126.23	122.56
2	D	412	HEM	C4B-CHC-C1C	2.76	126.20	122.56
2	A	412	HEM	CAB-C3B-C2B	-2.72	119.63	128.60

Continued on next page...

Continued from previous page...

Mol	Chain	Res	Type	Atoms	Z	Observed(°)	Ideal(°)
2	E	412	HEM	CMA-C3A-C4A	-2.68	124.35	128.46
2	D	412	HEM	C4A-C3A-C2A	2.67	108.85	107.00
3	B	6178	VDY	C19-C10-C5	-2.67	119.81	122.99
2	A	412	HEM	CBD-CAD-C3D	-2.63	105.31	112.63
2	D	412	HEM	CMD-C2D-C1D	2.61	129.01	125.04
2	E	412	HEM	C3D-C4D-ND	-2.59	107.29	110.17
2	C	412	HEM	C4B-CHC-C1C	2.49	125.84	122.56
3	B	6178	VDY	C3-C4-C5	-2.43	109.15	112.69
2	A	412	HEM	CMA-C3A-C4A	-2.38	124.80	128.46
2	C	412	HEM	C3B-C2B-C1B	2.38	108.25	106.49
2	A	412	HEM	CAD-C3D-C4D	2.37	128.80	124.66
3	C	6178	VDY	C2-C3-C4	2.36	113.53	110.31
3	B	6178	VDY	C2-C3-C4	2.34	113.52	110.31
2	E	412	HEM	C4A-C3A-C2A	2.34	108.62	107.00
2	E	412	HEM	C2C-C3C-C4C	2.34	108.53	106.90
2	D	412	HEM	C3C-C4C-NC	-2.33	106.55	110.94
2	E	412	HEM	CAB-C3B-C2B	-2.32	120.96	128.60
3	E	6178	VDY	C13-C14-C8	-2.32	109.36	113.13
3	B	6178	VDY	C18-C13-C14	2.32	114.00	110.24
2	E	412	HEM	CHC-C4B-C3B	2.30	128.09	124.57
2	B	412	HEM	CAD-CBD-CGD	-2.29	108.67	113.60
2	C	412	HEM	CAD-CBD-CGD	-2.28	108.69	113.60
3	C	6178	VDY	C12-C11-C9	2.25	116.41	111.38
3	D	6178	VDY	C2-C3-C4	2.25	113.38	110.31
2	A	412	HEM	CHC-C4B-C3B	2.22	127.97	124.57
3	C	6178	VDY	C9-C8-C14	2.22	118.46	113.15
2	A	412	HEM	CMB-C2B-C3B	-2.21	122.88	128.30
2	C	412	HEM	CAD-C3D-C4D	2.20	128.50	124.66
2	C	412	HEM	CHB-C1B-NB	2.20	127.10	124.38
2	E	412	HEM	C2B-C1B-NB	-2.19	107.25	109.84
2	C	412	HEM	CBA-CAA-C2A	-2.14	108.96	112.62
2	E	412	HEM	CBD-CAD-C3D	-2.14	106.68	112.63
2	D	412	HEM	CAD-C3D-C4D	2.12	128.36	124.66
2	D	412	HEM	C2B-C1B-NB	-2.11	107.33	109.84
2	C	412	HEM	C4A-C3A-C2A	2.11	108.46	107.00
2	B	412	HEM	CBB-CAB-C3B	-2.10	117.15	127.62
2	B	412	HEM	C3C-C4C-NC	-2.10	106.97	110.94
2	A	412	HEM	C3D-C4D-ND	-2.09	107.84	110.17
2	E	412	HEM	C4B-C3B-C2B	2.09	108.77	107.11
2	E	412	HEM	O2A-CGA-CBA	2.08	120.70	114.03
2	D	412	HEM	CBD-CAD-C3D	-2.07	106.88	112.63
3	A	6178	VDY	C18-C13-C17	-2.06	107.88	111.71

Continued on next page...

Continued from previous page...

Mol	Chain	Res	Type	Atoms	Z	Observed(°)	Ideal(°)
2	C	412	HEM	CAB-C3B-C2B	-2.06	121.83	128.60
3	C	6178	VDY	C13-C14-C8	-2.05	109.79	113.13
2	C	412	HEM	O1D-CGD-CBD	-2.05	116.49	123.08
2	A	412	HEM	CHB-C1B-NB	2.04	126.90	124.38
2	B	412	HEM	CBD-CAD-C3D	-2.03	106.98	112.63
2	B	412	HEM	C2C-C3C-C4C	2.03	108.32	106.90
2	E	412	HEM	CMB-C2B-C3B	-2.02	123.36	128.30
2	D	412	HEM	C1D-C2D-C3D	-2.00	104.85	106.96

There are no chirality outliers.

All (26) torsion outliers are listed below:

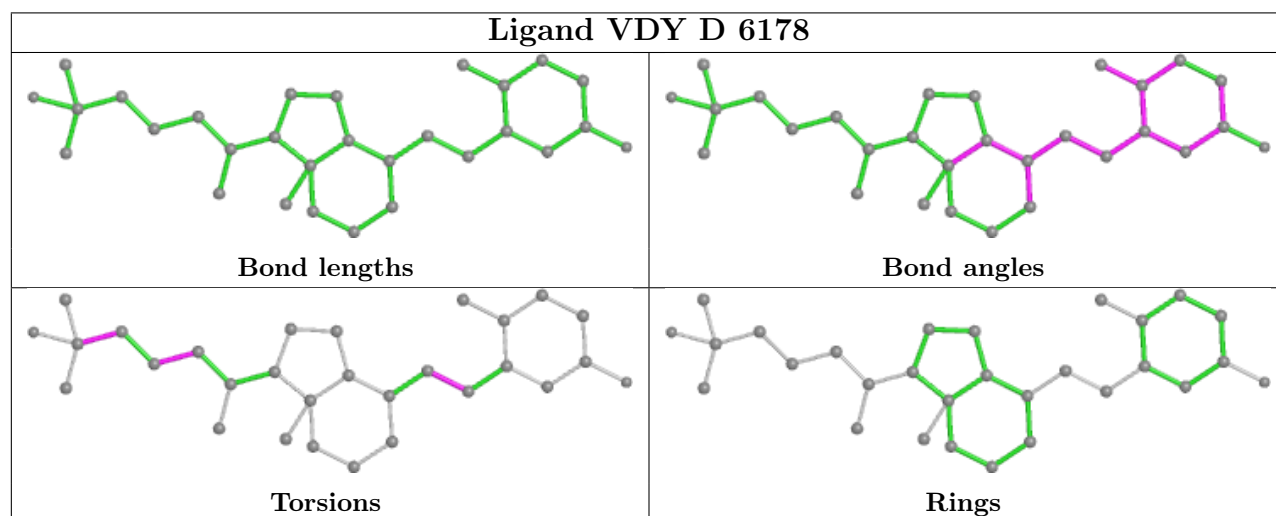
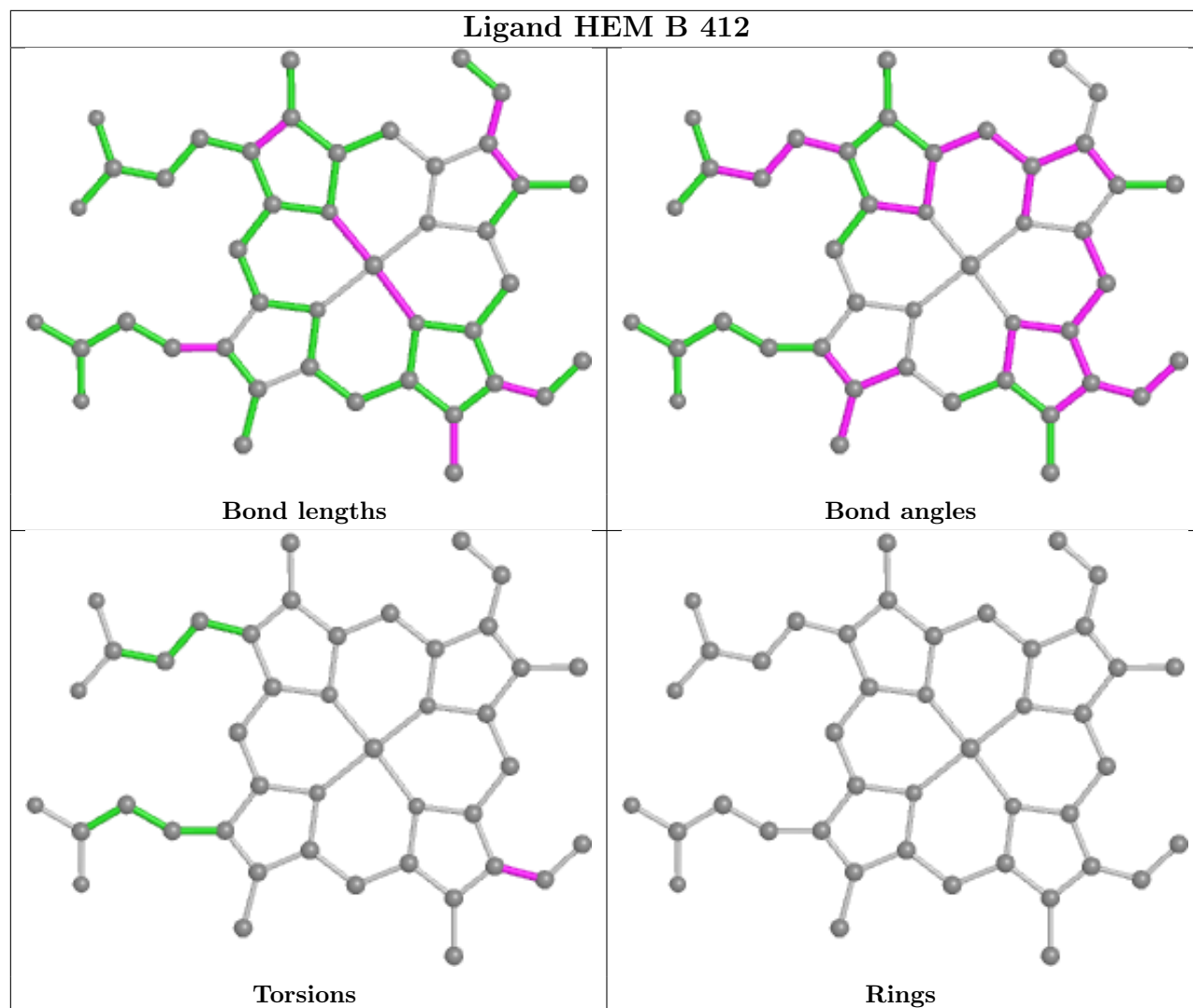
Mol	Chain	Res	Type	Atoms
3	A	6178	VDY	C5-C6-C7-C8
3	A	6178	VDY	C23-C24-C25-O2
3	A	6178	VDY	C23-C24-C25-C27
3	B	6178	VDY	C5-C6-C7-C8
3	B	6178	VDY	C23-C24-C25-O2
3	B	6178	VDY	C23-C24-C25-C26
3	C	6178	VDY	C23-C24-C25-O2
3	C	6178	VDY	C23-C24-C25-C26
3	C	6178	VDY	C23-C24-C25-C27
3	D	6178	VDY	C5-C6-C7-C8
3	D	6178	VDY	C23-C24-C25-O2
3	D	6178	VDY	C23-C24-C25-C26
3	D	6178	VDY	C23-C24-C25-C27
3	E	6178	VDY	C5-C6-C7-C8
3	E	6178	VDY	C23-C24-C25-O2
3	E	6178	VDY	C23-C24-C25-C26
5	A	3002	GOL	O1-C1-C2-O2
3	C	6178	VDY	C5-C6-C7-C8
3	A	6178	VDY	C23-C24-C25-C26
3	B	6178	VDY	C23-C24-C25-C27
3	E	6178	VDY	C23-C24-C25-C27
5	A	3002	GOL	O1-C1-C2-C3
3	E	6178	VDY	C20-C22-C23-C24
2	B	412	HEM	C4B-C3B-CAB-CBB
3	D	6178	VDY	C20-C22-C23-C24
3	B	6178	VDY	C20-C22-C23-C24

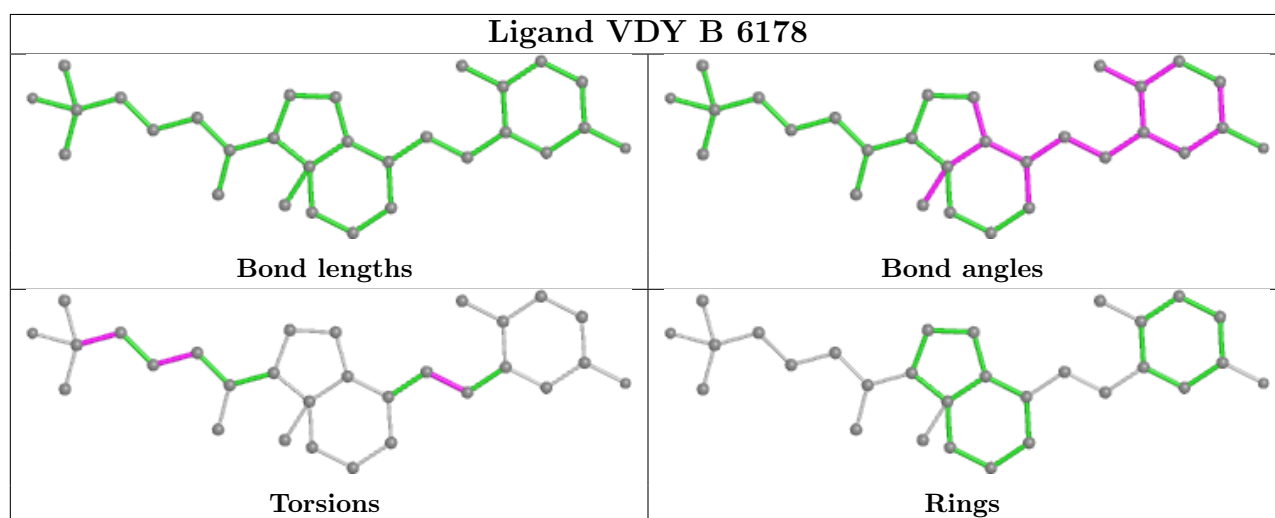
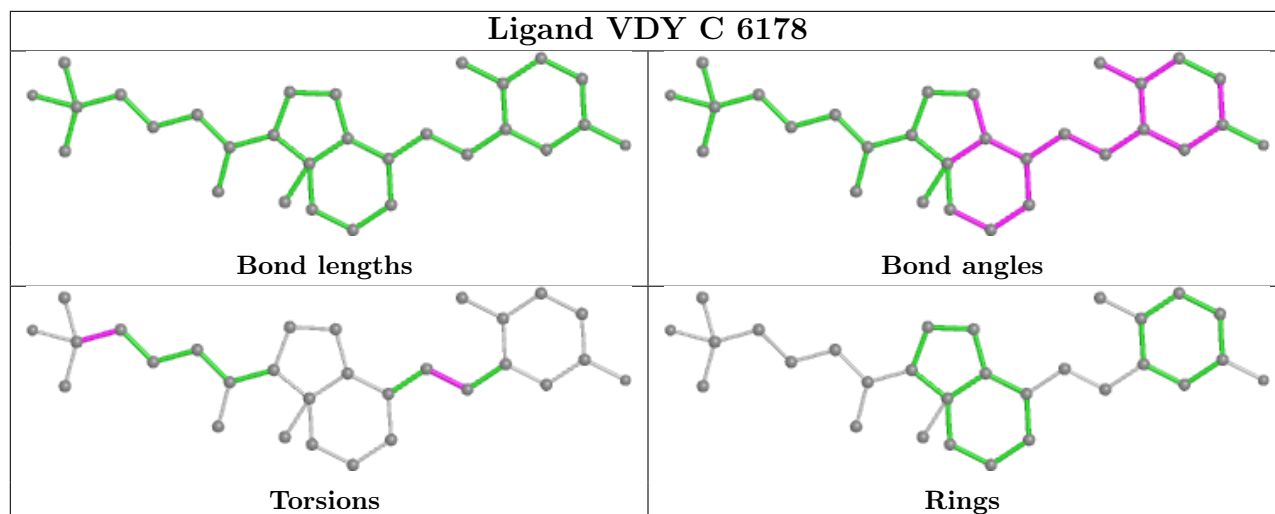
There are no ring outliers.

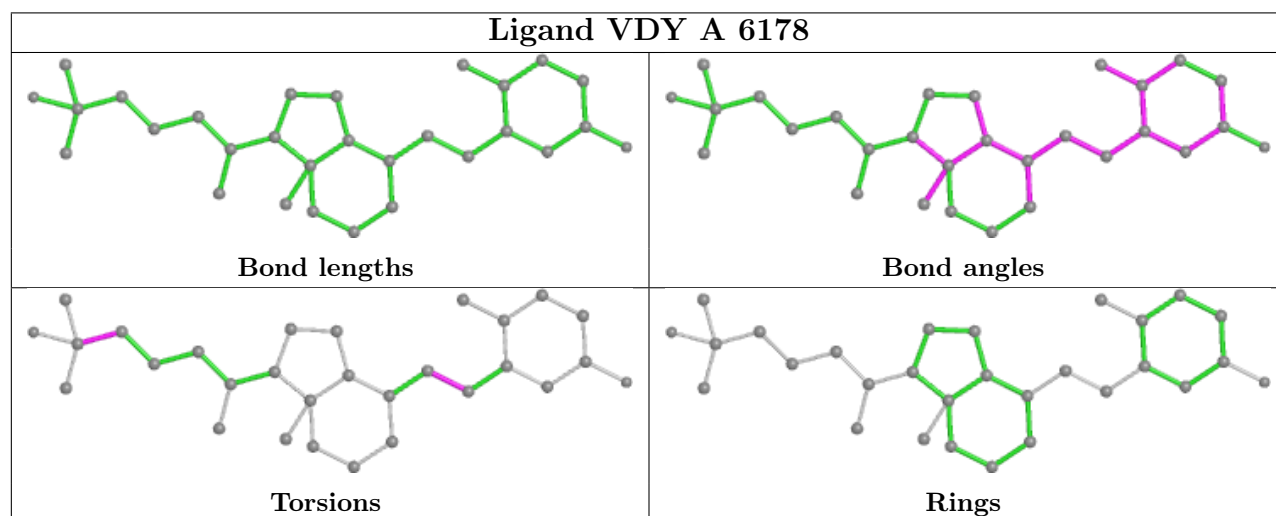
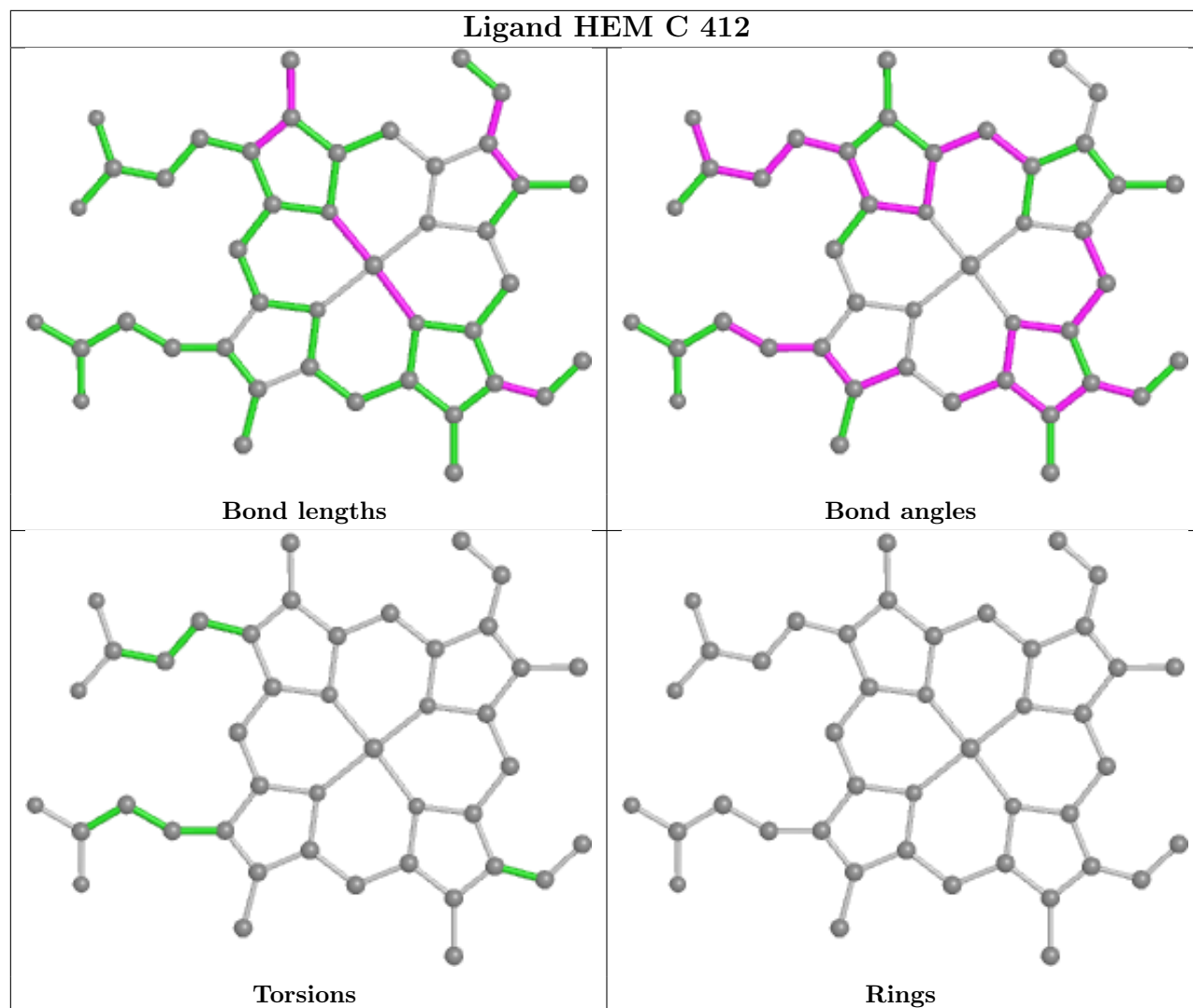
10 monomers are involved in 39 short contacts:

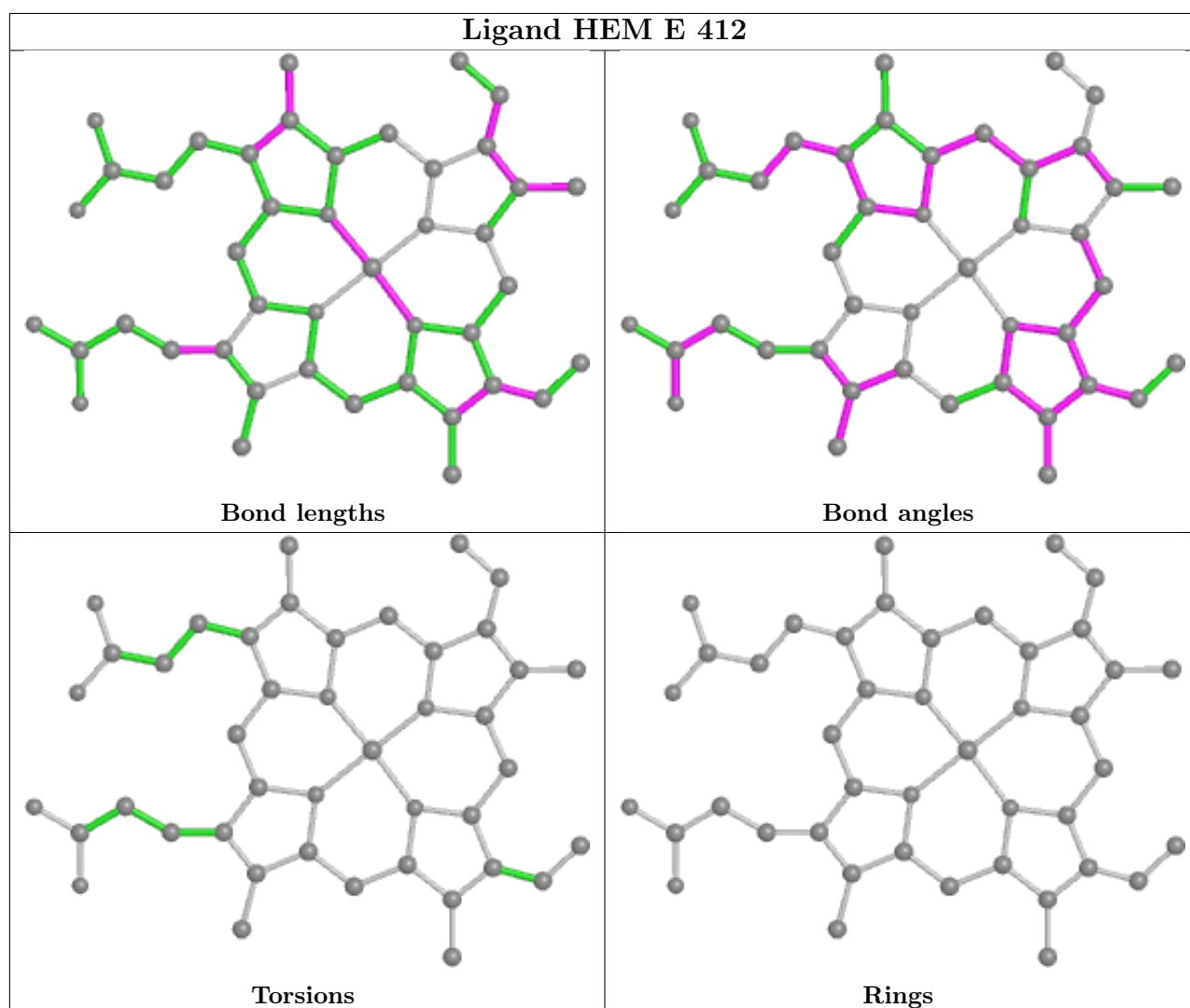
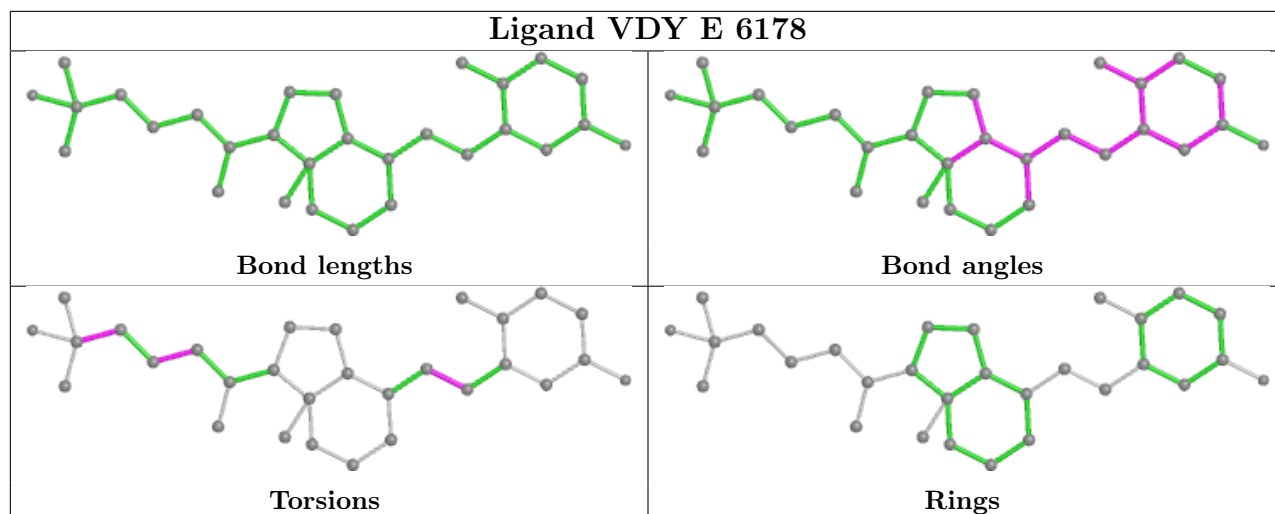
Mol	Chain	Res	Type	Clashes	Symm-Clashes
2	B	412	HEM	4	0
3	D	6178	VDY	7	0
3	C	6178	VDY	1	0
3	B	6178	VDY	3	0
2	C	412	HEM	7	0
3	A	6178	VDY	5	0
3	E	6178	VDY	3	0
2	E	412	HEM	3	0
2	A	412	HEM	5	0
2	D	412	HEM	1	0

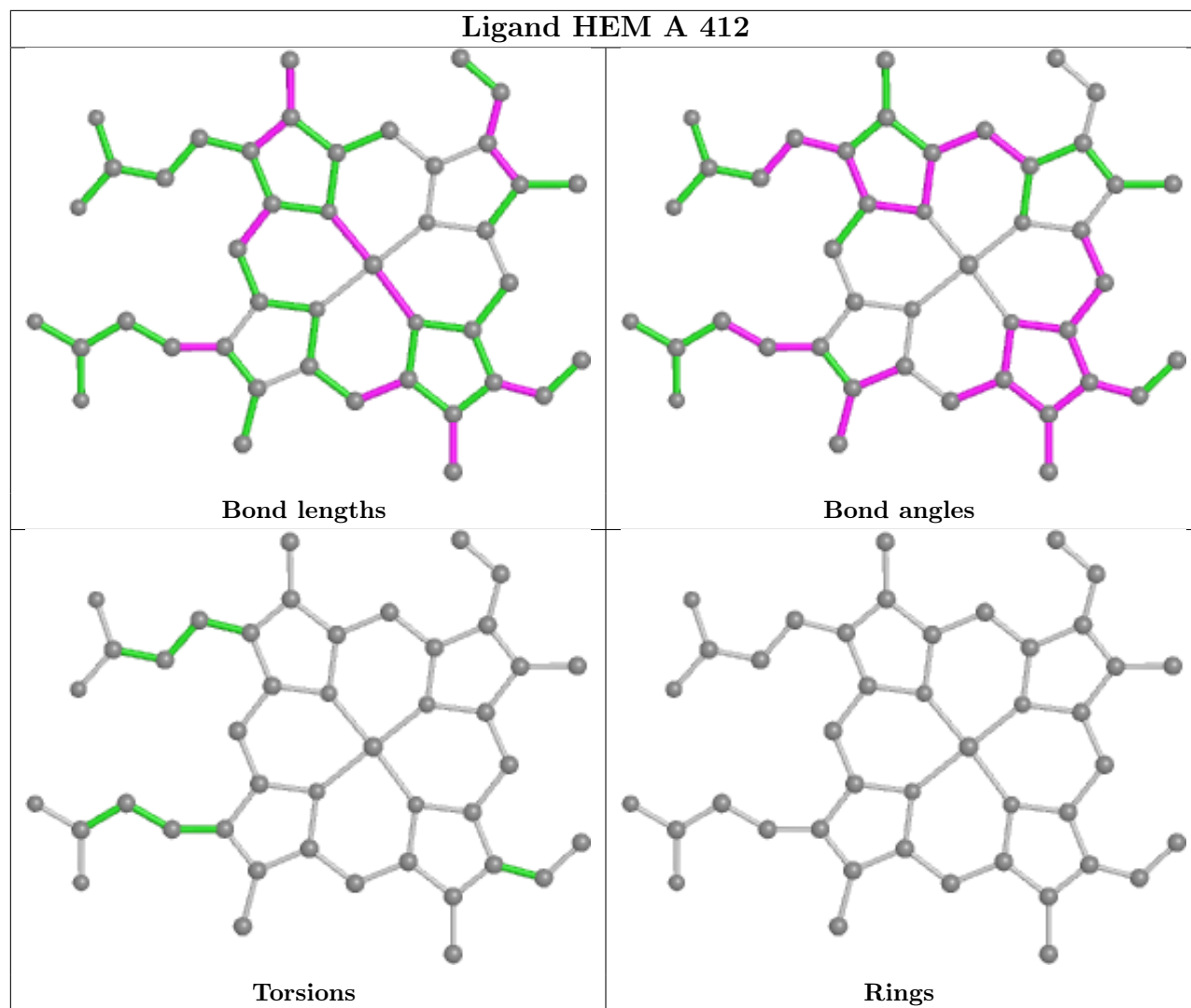
The following is a two-dimensional graphical depiction of Mogul quality analysis of bond lengths, bond angles, torsion angles, and ring geometry for all instances of the Ligand of Interest. In addition, ligands with molecular weight > 250 and outliers as shown on the validation Tables will also be included. For torsion angles, if less than 5% of the Mogul distribution of torsion angles is within 10 degrees of the torsion angle in question, then that torsion angle is considered an outlier. Any bond that is central to one or more torsion angles identified as an outlier by Mogul will be highlighted in the graph. For rings, the root-mean-square deviation (RMSD) between the ring in question and similar rings identified by Mogul is calculated over all ring torsion angles. If the average RMSD is greater than 60 degrees and the minimal RMSD between the ring in question and any Mogul-identified rings is also greater than 60 degrees, then that ring is considered an outlier. The outliers are highlighted in purple. The color gray indicates Mogul did not find sufficient equivalents in the CSD to analyse the geometry.

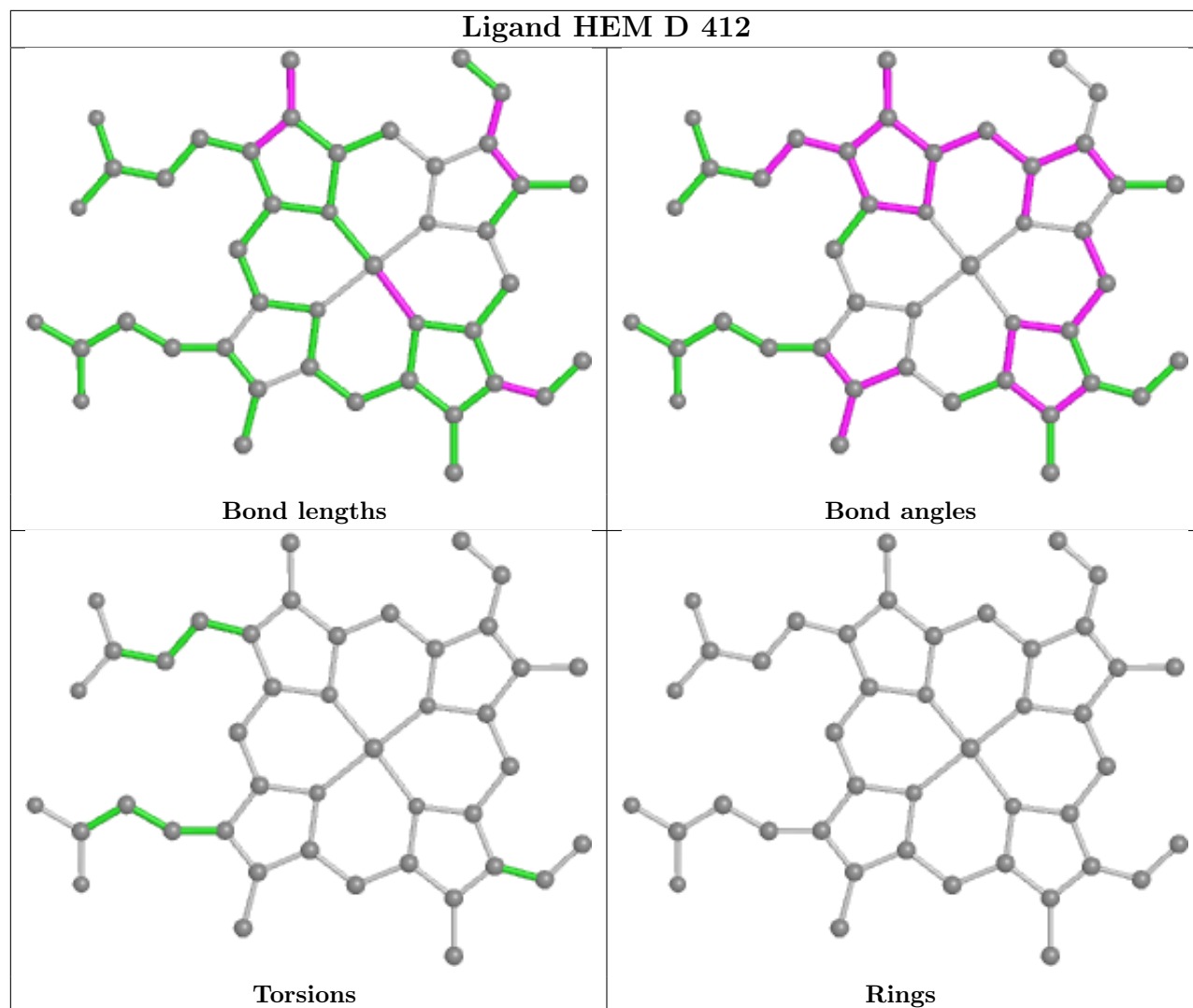












5.7 Other polymers [i](#)

There are no such residues in this entry.

5.8 Polymer linkage issues [i](#)

There are no chain breaks in this entry.

6 Fit of model and data

6.1 Protein, DNA and RNA chains

In the following table, the column labelled ‘#RSRZ > 2’ contains the number (and percentage) of RSRZ outliers, followed by percent RSRZ outliers for the chain as percentile scores relative to all X-ray entries and entries of similar resolution. The OWAB column contains the minimum, median, 95th percentile and maximum values of the occupancy-weighted average B-factor per residue. The column labelled ‘Q < 0.9’ lists the number of (and percentage) of residues with an average occupancy less than 0.9.

Mol	Chain	Analysed	<RSRZ>	#RSRZ>2	OWAB(Å ²)	Q<0.9
1	A	402/411 (97%)	-0.15	4 (0%) 82 81	12, 21, 36, 50	0
1	B	402/411 (97%)	0.10	13 (3%) 47 46	17, 30, 51, 62	0
1	C	401/411 (97%)	0.31	32 (7%) 12 11	15, 31, 56, 72	0
1	D	402/411 (97%)	-0.05	12 (2%) 50 49	15, 30, 51, 61	0
1	E	401/411 (97%)	-0.14	4 (0%) 82 81	19, 28, 44, 56	0
All	All	2008/2055 (97%)	0.01	65 (3%) 47 46	12, 28, 50, 72	0

All (65) RSRZ outliers are listed below:

Mol	Chain	Res	Type	RSRZ
1	A	403	ALA	5.6
1	D	8	THR	4.2
1	C	6	THR	4.0
1	B	6	THR	3.9
1	C	402	SER	3.9
1	D	403	ALA	3.8
1	D	42	ASP	3.8
1	C	7	GLY	3.7
1	C	397	THR	3.7
1	B	216	MET	3.7
1	C	2	ALA	3.6
1	C	400	PRO	3.6
1	C	132	ASP	3.6
1	D	2	ALA	3.5
1	E	133	GLY	3.4
1	C	399	GLY	3.3
1	C	370	GLU	3.1
1	C	8	THR	3.1
1	E	134	PRO	3.0
1	C	364	LEU	3.0

Continued on next page...

Continued from previous page...

Mol	Chain	Res	Type	RSRZ
1	B	199	ARG	3.0
1	B	159	GLU	3.0
1	B	8	THR	2.9
1	C	134	PRO	2.9
1	C	262	LEU	2.8
1	B	7	GLY	2.8
1	D	77	ALA	2.8
1	A	41	PRO	2.8
1	C	266	PRO	2.7
1	D	73	GLU	2.6
1	D	134	PRO	2.6
1	C	254	THR	2.6
1	C	256	PRO	2.5
1	C	253	LEU	2.5
1	D	178	ASP	2.5
1	D	370	GLU	2.5
1	B	9	GLU	2.5
1	D	41	PRO	2.5
1	C	32	GLU	2.5
1	B	204	ASP	2.4
1	B	333	ASP	2.4
1	D	199	ARG	2.4
1	B	200	THR	2.4
1	C	9	GLU	2.4
1	C	129	LEU	2.3
1	C	401	ARG	2.3
1	C	268	LEU	2.3
1	B	403	ALA	2.3
1	D	39	ALA	2.3
1	C	263	ALA	2.2
1	B	197	ARG	2.2
1	C	139	ARG	2.2
1	C	159	GLU	2.2
1	E	131	THR	2.2
1	C	126	LEU	2.2
1	C	369	PRO	2.2
1	C	261	LEU	2.1
1	C	131	THR	2.1
1	C	396	VAL	2.1
1	E	401	ARG	2.1
1	A	109	ARG	2.0
1	B	2	ALA	2.0

Continued on next page...

Continued from previous page...

Mol	Chain	Res	Type	RSRZ
1	C	365	PHE	2.0
1	A	2	ALA	2.0
1	C	264	GLU	2.0

6.2 Non-standard residues in protein, DNA, RNA chains [i](#)

There are no non-standard protein/DNA/RNA residues in this entry.

6.3 Carbohydrates [i](#)

There are no monosaccharides in this entry.

6.4 Ligands [i](#)

In the following table, the Atoms column lists the number of modelled atoms in the group and the number defined in the chemical component dictionary. The B-factors column lists the minimum, median, 95th percentile and maximum values of B factors of atoms in the group. The column labelled 'Q< 0.9' lists the number of atoms with occupancy less than 0.9.

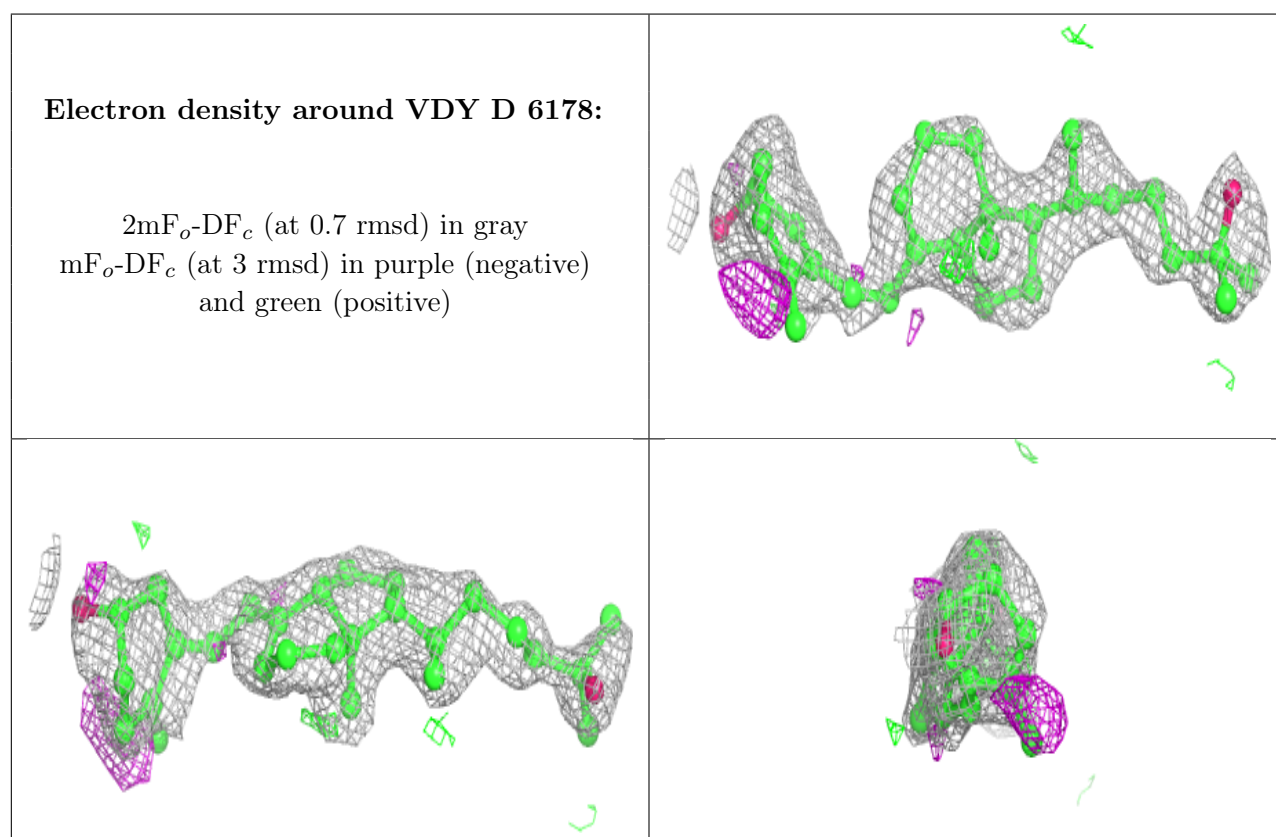
Mol	Type	Chain	Res	Atoms	RSCC	RSR	B-factors(\AA^2)	Q<0.9
6	ACT	B	4009	4/4	0.68	0.19	42,42,42,42	0
6	ACT	E	4005	4/4	0.77	0.18	41,41,41,42	0
6	ACT	C	4004	4/4	0.85	0.14	40,40,41,41	0
3	VDY	D	6178	29/29	0.85	0.23	43,46,57,57	0
3	VDY	B	6178	29/29	0.86	0.21	39,46,58,59	0
3	VDY	E	6178	29/29	0.87	0.20	37,39,53,54	0
6	ACT	C	4007	4/4	0.89	0.16	36,37,37,37	0
3	VDY	C	6178	29/29	0.89	0.17	28,33,43,45	0
3	VDY	A	6178	29/29	0.90	0.14	27,31,42,44	0
6	ACT	E	4008	4/4	0.91	0.14	40,40,40,40	0
5	GOL	A	3002	6/6	0.93	0.16	30,31,34,37	0
4	CA	A	2506	1/1	0.93	0.06	45,45,45,45	0
6	ACT	A	4006	4/4	0.94	0.15	24,27,28,28	0
4	CA	E	2504	1/1	0.96	0.09	35,35,35,35	0
6	ACT	D	4001	4/4	0.96	0.13	21,22,22,22	0
5	GOL	A	3001	6/6	0.97	0.11	23,23,25,25	0
4	CA	C	2503	1/1	0.97	0.05	32,32,32,32	0
2	HEM	B	412	43/43	0.97	0.12	18,25,27,32	0
4	CA	A	2501	1/1	0.98	0.04	29,29,29,29	0
4	CA	A	2505	1/1	0.98	0.05	30,30,30,30	0

Continued on next page...

Continued from previous page...

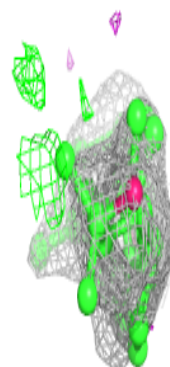
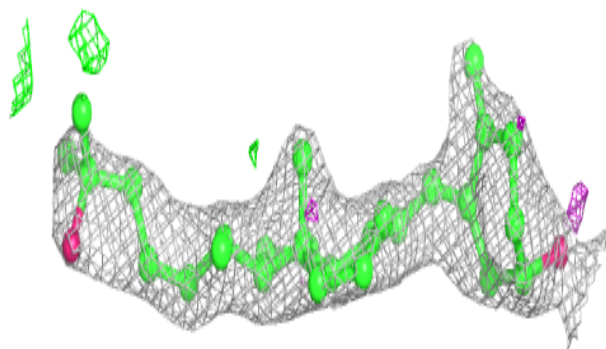
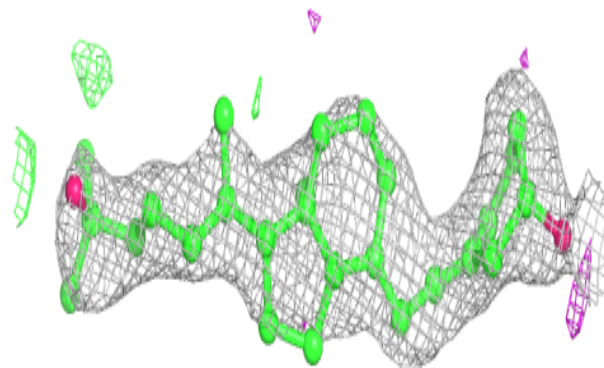
Mol	Type	Chain	Res	Atoms	RSCC	RSR	B-factors(\AA^2)	Q<0.9
2	HEM	E	412	43/43	0.98	0.14	16,19,21,31	0
2	HEM	C	412	43/43	0.98	0.17	14,18,21,29	0
4	CA	D	2502	1/1	0.98	0.05	35,35,35,35	0
2	HEM	D	412	43/43	0.99	0.11	12,16,19,26	0
2	HEM	A	412	43/43	0.99	0.16	9,13,18,27	0

The following is a graphical depiction of the model fit to experimental electron density of all instances of the Ligand of Interest. In addition, ligands with molecular weight > 250 and outliers as shown on the geometry validation Tables will also be included. Each fit is shown from different orientation to approximate a three-dimensional view.

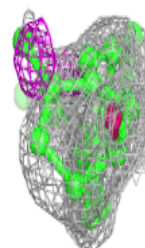
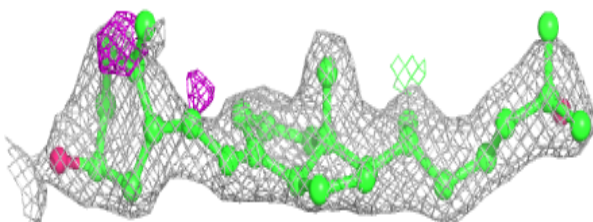
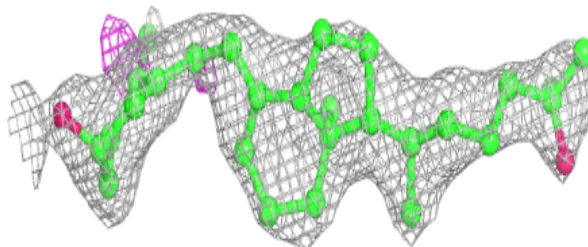


Electron density around VDY B 6178:

$2mF_o-DF_c$ (at 0.7 rmsd) in gray
 mF_o-DF_c (at 3 rmsd) in purple (negative)
and green (positive)

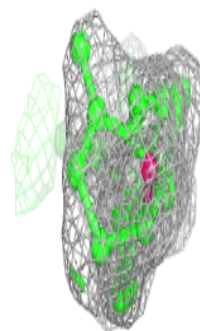
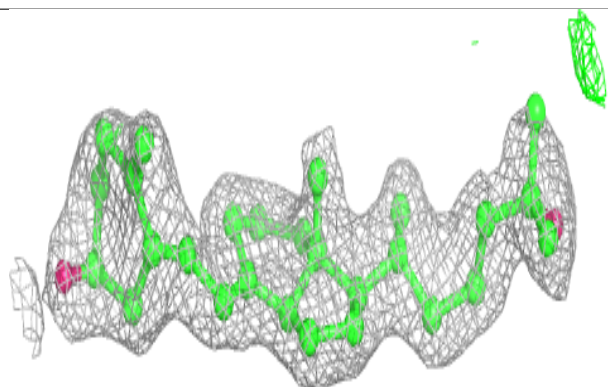
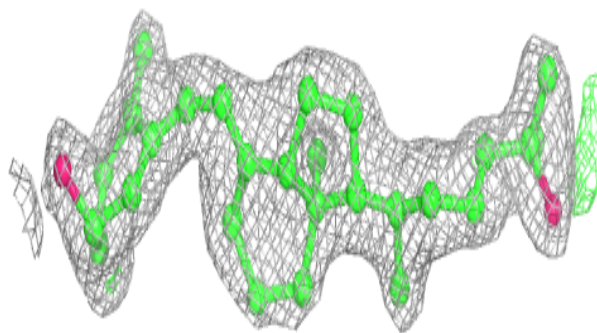
**Electron density around VDY E 6178:**

$2mF_o-DF_c$ (at 0.7 rmsd) in gray
 mF_o-DF_c (at 3 rmsd) in purple (negative)
and green (positive)

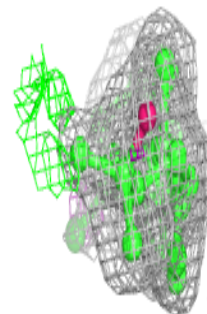
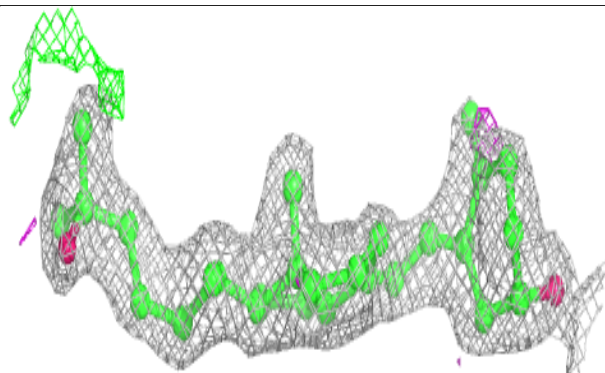
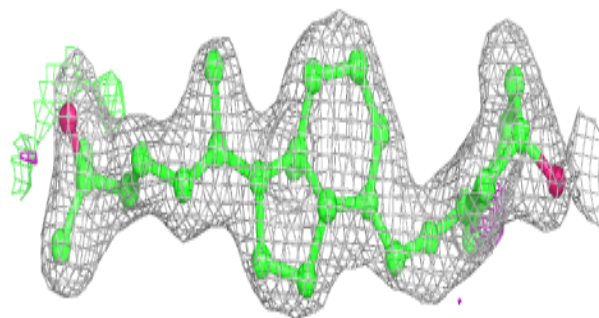


Electron density around VDY C 6178:

$2mF_o-DF_c$ (at 0.7 rmsd) in gray
 mF_o-DF_c (at 3 rmsd) in purple (negative)
and green (positive)

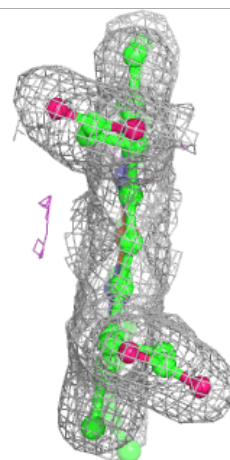
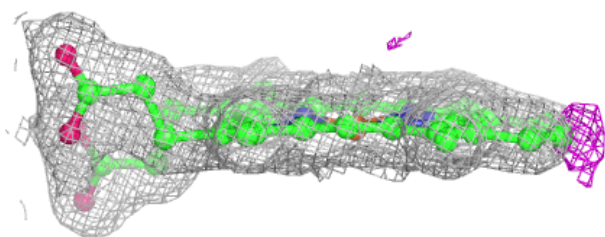
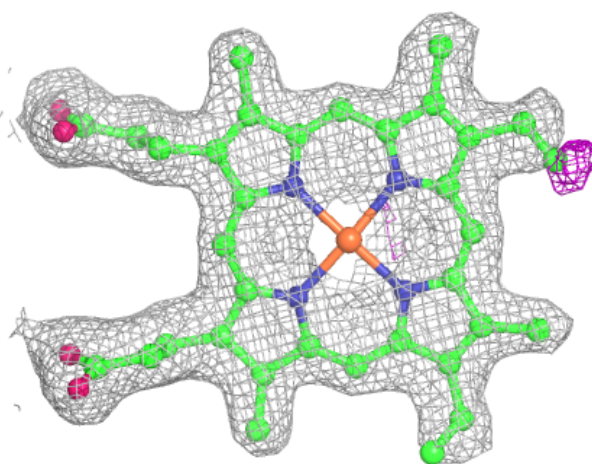
**Electron density around VDY A 6178:**

$2mF_o-DF_c$ (at 0.7 rmsd) in gray
 mF_o-DF_c (at 3 rmsd) in purple (negative)
and green (positive)



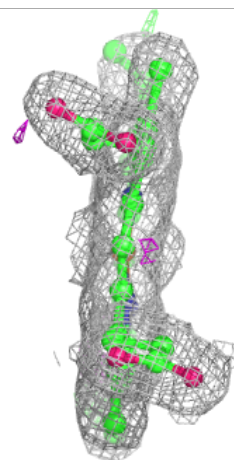
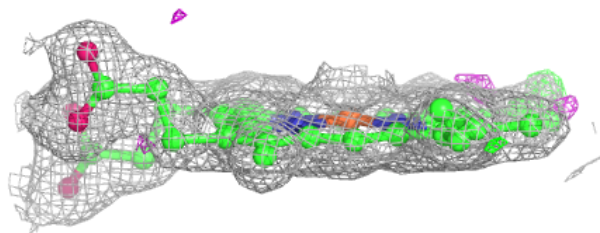
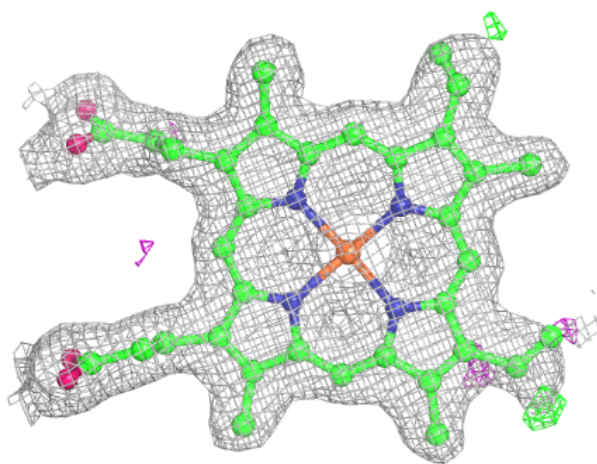
Electron density around HEM B 412:

$2mF_o-DF_c$ (at 0.7 rmsd) in gray
 mF_o-DF_c (at 3 rmsd) in purple (negative)
and green (positive)



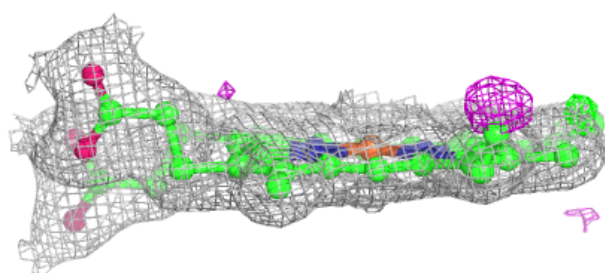
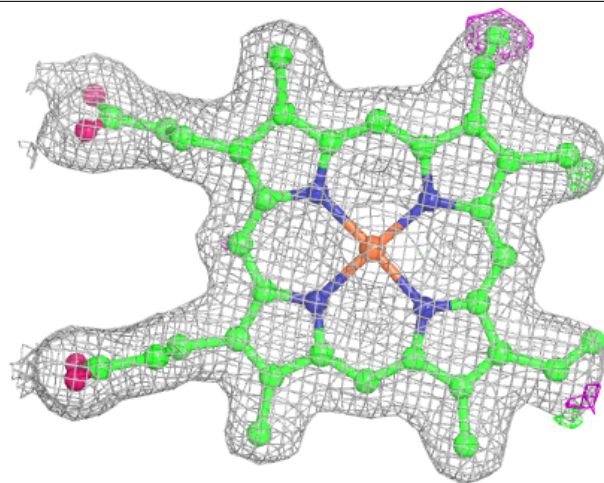
Electron density around HEM E 412:

$2mF_o-DF_c$ (at 0.7 rmsd) in gray
 mF_o-DF_c (at 3 rmsd) in purple (negative)
and green (positive)



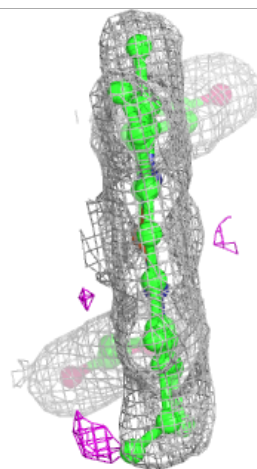
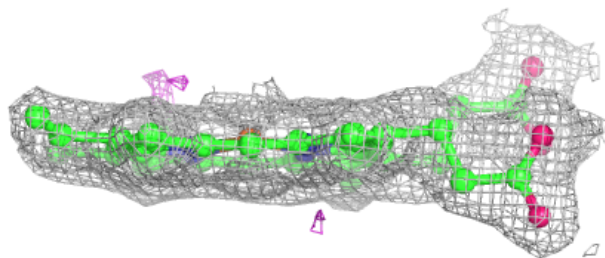
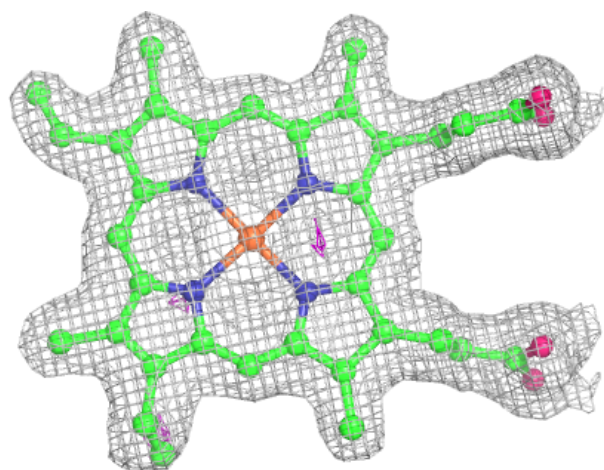
Electron density around HEM C 412:

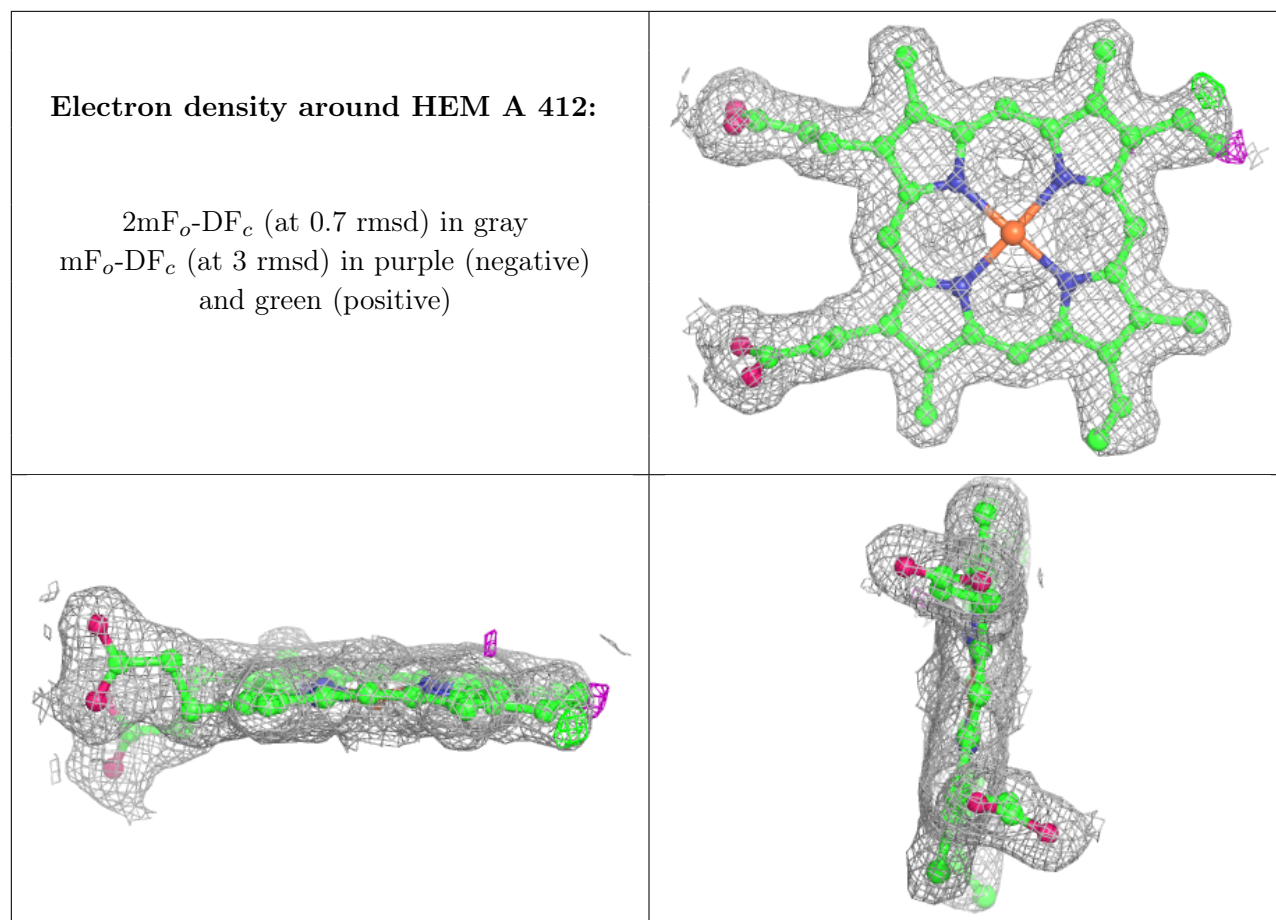
$2mF_o-DF_c$ (at 0.7 rmsd) in gray
 mF_o-DF_c (at 3 rmsd) in purple (negative)
and green (positive)



Electron density around HEM D 412:

$2mF_o-DF_c$ (at 0.7 rmsd) in gray
 mF_o-DF_c (at 3 rmsd) in purple (negative)
and green (positive)





6.5 Other polymers [i](#)

There are no such residues in this entry.