



# Full wwPDB X-ray Structure Validation Report ⓘ

Oct 23, 2023 – 07:17 PM EDT

PDB ID : 3A1L  
Title : Crystal Structure of 11,11'-Dichlorochromopyrrolic Acid Bound Cytochrome P450 StaP (CYP245A1)  
Authors : Makino, M.; Sugimoto, H.; Shiro, Y.; Asamizu, S.; Onaka, H.; Nagano, S.  
Deposited on : 2009-04-09  
Resolution : 2.50 Å(reported)

This is a Full wwPDB X-ray Structure Validation Report for a publicly released PDB entry.

We welcome your comments at [validation@mail.wwpdb.org](mailto:validation@mail.wwpdb.org)

A user guide is available at

<https://www.wwpdb.org/validation/2017/XrayValidationReportHelp>

with specific help available everywhere you see the ⓘ symbol.

The types of validation reports are described at

<http://www.wwpdb.org/validation/2017/FAQs#types>.

---

The following versions of software and data (see [references ⓘ](#)) were used in the production of this report:

MolProbity : 4.02b-467  
Mogul : 1.8.5 (274361), CSD as541be (2020)  
Xtriage (Phenix) : 1.13  
EDS : 2.36  
buster-report : 1.1.7 (2018)  
Percentile statistics : 20191225.v01 (using entries in the PDB archive December 25th 2019)  
Refmac : 5.8.0158  
CCP4 : 7.0.044 (Gargrove)  
Ideal geometry (proteins) : Engh & Huber (2001)  
Ideal geometry (DNA, RNA) : Parkinson et al. (1996)  
Validation Pipeline (wwPDB-VP) : 2.36

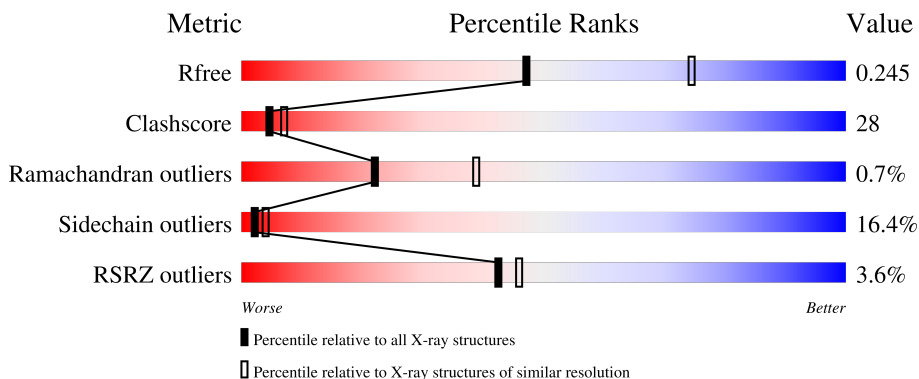
# 1 Overall quality at a glance

The following experimental techniques were used to determine the structure:

*X-RAY DIFFRACTION*


The reported resolution of this entry is 2.50 Å.

Percentile scores (ranging between 0-100) for global validation metrics of the entry are shown in the following graphic. The table shows the number of entries on which the scores are based.



Metric	Whole archive (#Entries)	Similar resolution (#Entries, resolution range(Å))
$R_{free}$	130704	4661 (2.50-2.50)
Clashscore	141614	5346 (2.50-2.50)
Ramachandran outliers	138981	5231 (2.50-2.50)
Sidechain outliers	138945	5233 (2.50-2.50)
RSRZ outliers	127900	4559 (2.50-2.50)

The table below summarises the geometric issues observed across the polymeric chains and their fit to the electron density. The red, orange, yellow and green segments of the lower bar indicate the fraction of residues that contain outliers for  $\geq 3$ , 2, 1 and 0 types of geometric quality criteria respectively. A grey segment represents the fraction of residues that are not modelled. The numeric value for each fraction is indicated below the corresponding segment, with a dot representing fractions  $\leq 5\%$ . The upper red bar (where present) indicates the fraction of residues that have poor fit to the electron density. The numeric value is given above the bar.

Mol	Chain	Length	Quality of chain
1	A	425	

## 2 Entry composition i

There are 4 unique types of molecules in this entry. The entry contains 3447 atoms, of which 0 are hydrogens and 0 are deuteriums.

In the tables below, the ZeroOcc column contains the number of atoms modelled with zero occupancy, the AltConf column contains the number of residues with at least one atom in alternate conformation and the Trace column contains the number of residues modelled with at most 2 atoms.

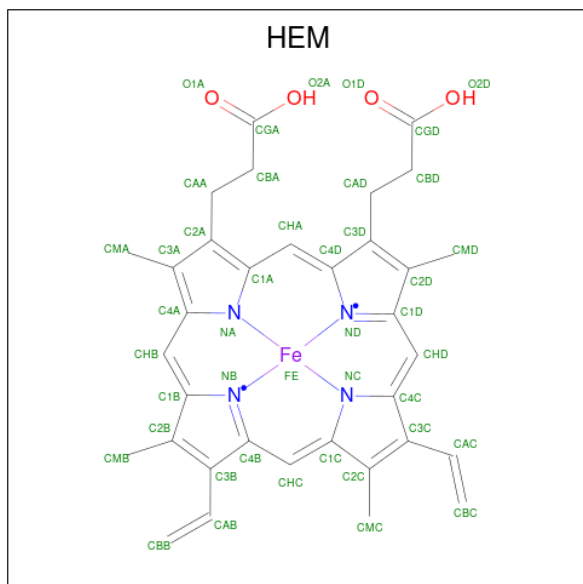
- Molecule 1 is a protein called Cytochrome P450.

Mol	Chain	Residues	Atoms					ZeroOcc	AltConf	Trace
			Total	C	N	O	S			
1	A	411	3237	2026	605	601	5	0	2	0

There are 8 discrepancies between the modelled and reference sequences:

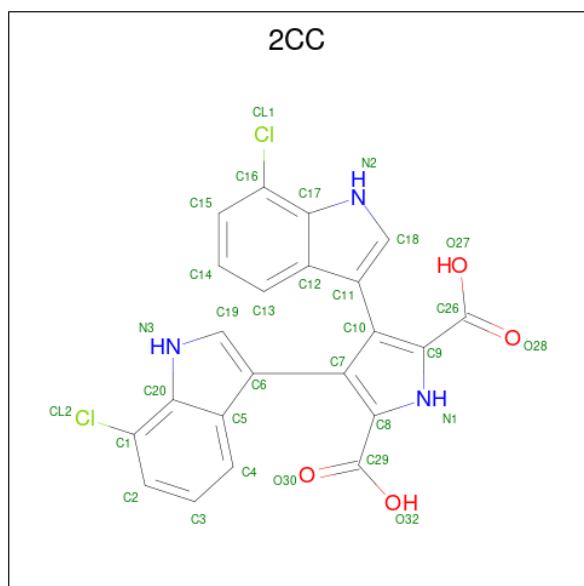
Chain	Residue	Modelled	Actual	Comment	Reference
A	418	LEU	-	expression tag	UNP Q83WG3
A	419	GLU	-	expression tag	UNP Q83WG3
A	420	HIS	-	expression tag	UNP Q83WG3
A	421	HIS	-	expression tag	UNP Q83WG3
A	422	HIS	-	expression tag	UNP Q83WG3
A	423	HIS	-	expression tag	UNP Q83WG3
A	424	HIS	-	expression tag	UNP Q83WG3
A	425	HIS	-	expression tag	UNP Q83WG3

- Molecule 2 is PROTOPORPHYRIN IX CONTAINING FE (three-letter code: HEM) (formula:  $C_{34}H_{32}FeN_4O_4$ ).



Mol	Chain	Residues	Atoms				ZeroOcc	AltConf	
			Total	C	Fe	N			O
2	A	1	43	34	1	4	4	0	0

- Molecule 3 is 3,4-bis(7-chloro-1H-indol-3-yl)-1H-pyrrole-2,5-dicarboxylic acid (three-letter code: 2CC) (formula: C<sub>22</sub>H<sub>13</sub>Cl<sub>2</sub>N<sub>3</sub>O<sub>4</sub>).



Mol	Chain	Residues	Atoms				ZeroOcc	AltConf	
			Total	C	Cl	N			O
3	A	1	31	22	2	3	4	0	0

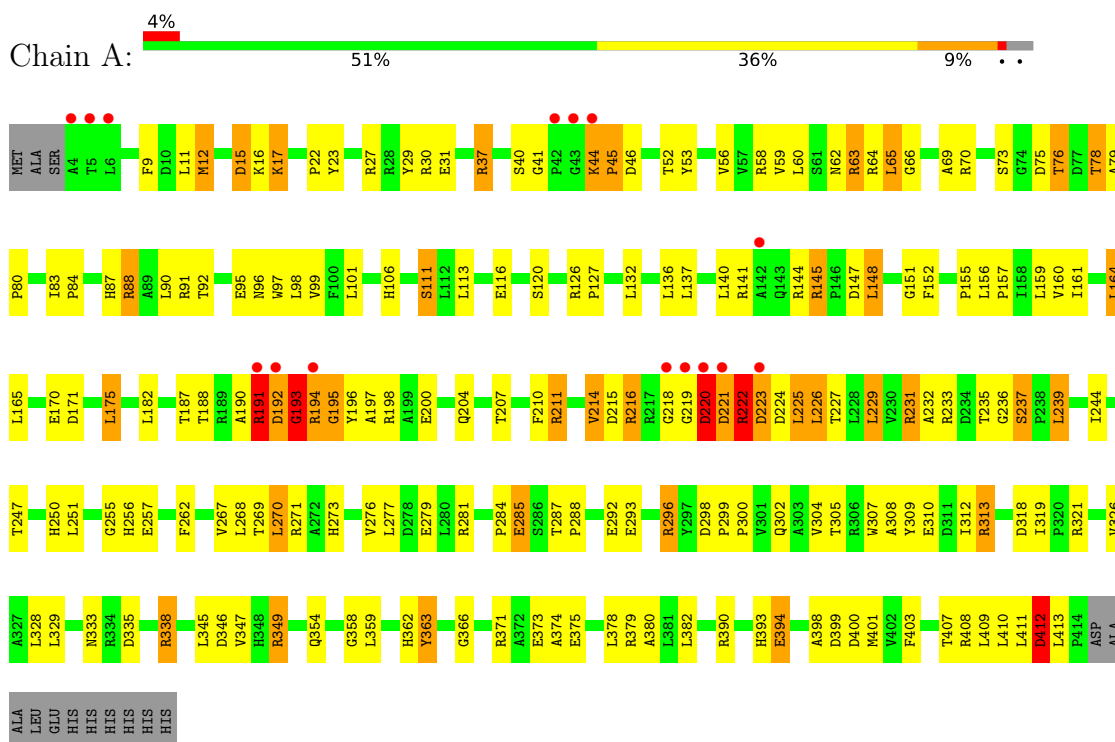
- Molecule 4 is water.

Mol	Chain	Residues	Atoms		ZeroOcc	AltConf
			Total	O		
4	A	136	136	136	0	0

### 3 Residue-property plots i

These plots are drawn for all protein, RNA, DNA and oligosaccharide chains in the entry. The first graphic for a chain summarises the proportions of the various outlier classes displayed in the second graphic. The second graphic shows the sequence view annotated by issues in geometry and electron density. Residues are color-coded according to the number of geometric quality criteria for which they contain at least one outlier: green = 0, yellow = 1, orange = 2 and red = 3 or more. A red dot above a residue indicates a poor fit to the electron density ( $RSRZ > 2$ ). Stretches of 2 or more consecutive residues without any outlier are shown as a green connector. Residues present in the sample, but not in the model, are shown in grey.

- Molecule 1: Cytochrome P450



## 4 Data and refinement statistics

Property	Value	Source
Space group	P 21 21 21	Depositor
Cell constants a, b, c, $\alpha$ , $\beta$ , $\gamma$	45.37Å 68.22Å 139.12Å 90.00° 90.00° 90.00°	Depositor
Resolution (Å)	19.76 – 2.50 19.76 – 2.50	Depositor EDS
% Data completeness (in resolution range)	88.7 (19.76-2.50) 88.7 (19.76-2.50)	Depositor EDS
$R_{merge}$	(Not available)	Depositor
$R_{sym}$	0.05	Depositor
$\langle I/\sigma(I) \rangle$ <sup>1</sup>	6.55 (at 2.50Å)	Xtrriage
Refinement program	CNS	Depositor
R, $R_{free}$	0.217 , 0.252 0.210 , 0.245	Depositor DCC
$R_{free}$ test set	680 reflections (4.94%)	wwPDB-VP
Wilson B-factor (Å <sup>2</sup> )	38.6	Xtrriage
Anisotropy	0.672	Xtrriage
Bulk solvent $k_{sol}$ (e/Å <sup>3</sup> ), $B_{sol}$ (Å <sup>2</sup> )	0.31 , 47.6	EDS
L-test for twinning <sup>2</sup>	$\langle  L  \rangle = 0.49$ , $\langle L^2 \rangle = 0.33$	Xtrriage
Estimated twinning fraction	No twinning to report.	Xtrriage
$F_o, F_c$ correlation	0.94	EDS
Total number of atoms	3447	wwPDB-VP
Average B, all atoms (Å <sup>2</sup> )	40.0	wwPDB-VP

Xtrriage's analysis on translational NCS is as follows: *The largest off-origin peak in the Patterson function is 5.95% of the height of the origin peak. No significant pseudotranslation is detected.*

<sup>1</sup>Intensities estimated from amplitudes.

<sup>2</sup>Theoretical values of  $\langle |L| \rangle$ ,  $\langle L^2 \rangle$  for acentric reflections are 0.5, 0.333 respectively for untwinned datasets, and 0.375, 0.2 for perfectly twinned datasets.

## 5 Model quality [i](#)

### 5.1 Standard geometry [i](#)

Bond lengths and bond angles in the following residue types are not validated in this section: HEM, 2CC

The Z score for a bond length (or angle) is the number of standard deviations the observed value is removed from the expected value. A bond length (or angle) with  $|Z| > 5$  is considered an outlier worth inspection. RMSZ is the root-mean-square of all Z scores of the bond lengths (or angles).

Mol	Chain	Bond lengths		Bond angles	
		RMSZ	# Z  >5	RMSZ	# Z  >5
1	A	0.46	0/3309	0.89	20/4512 (0.4%)

There are no bond length outliers.

All (20) bond angle outliers are listed below:

Mol	Chain	Res	Type	Atoms	Z	Observed(°)	Ideal(°)
1	A	413	LEU	CA-CB-CG	10.04	138.38	115.30
1	A	221	ASP	CB-CG-OD1	9.75	127.08	118.30
1	A	219	GLY	N-CA-C	-9.58	89.15	113.10
1	A	221	ASP	CB-CG-OD2	-9.25	109.97	118.30
1	A	220	ASP	CB-CG-OD2	6.74	124.37	118.30
1	A	413	LEU	C-N-CD	-6.71	105.85	120.60
1	A	223	ASP	N-CA-C	-6.50	93.46	111.00
1	A	221	ASP	N-CA-C	-6.48	93.50	111.00
1	A	222	ARG	N-CA-C	-6.44	93.62	111.00
1	A	413	LEU	N-CA-C	6.41	128.29	111.00
1	A	220	ASP	CB-CG-OD1	-5.97	112.92	118.30
1	A	218	GLY	C-N-CA	5.82	134.52	122.30
1	A	412	ASP	C-N-CA	5.74	136.04	121.70
1	A	220	ASP	N-CA-CB	5.65	120.76	110.60
1	A	221	ASP	N-CA-CB	-5.61	100.51	110.60
1	A	193	GLY	N-CA-C	-5.57	99.19	113.10
1	A	412	ASP	N-CA-C	5.50	125.84	111.00
1	A	41	GLY	N-CA-C	5.18	126.06	113.10
1	A	191	ARG	N-CA-C	-5.17	97.05	111.00
1	A	236	GLY	N-CA-C	5.05	125.72	113.10

There are no chirality outliers.

There are no planarity outliers.

## 5.2 Too-close contacts

In the following table, the Non-H and H(model) columns list the number of non-hydrogen atoms and hydrogen atoms in the chain respectively. The H(added) column lists the number of hydrogen atoms added and optimized by MolProbity. The Clashes column lists the number of clashes within the asymmetric unit, whereas Symm-Clashes lists symmetry-related clashes.

Mol	Chain	Non-H	H(model)	H(added)	Clashes	Symm-Clashes
1	A	3237	0	3212	185	0
2	A	43	0	30	3	0
3	A	31	0	11	0	0
4	A	136	0	0	14	0
All	All	3447	0	3253	185	0

The all-atom clashscore is defined as the number of clashes found per 1000 atoms (including hydrogen atoms). The all-atom clashscore for this structure is 28.

All (185) close contacts within the same asymmetric unit are listed below, sorted by their clash magnitude.

Atom-1	Atom-2	Interatomic distance (Å)	Clash overlap (Å)
1:A:193:GLY:C	1:A:194:ARG:HG2	1.76	1.06
1:A:313:ARG:HH11	1:A:313:ARG:HG2	1.18	1.02
1:A:70:ARG:CD	1:A:78:THR:O	2.16	0.94
1:A:270:LEU:HB3	1:A:277:LEU:HD12	1.52	0.92
1:A:70:ARG:HD3	1:A:78:THR:O	1.70	0.91
1:A:62:ASN:OD1	1:A:64:ARG:HB2	1.74	0.87
1:A:46[B]:ASP:OD2	1:A:46[B]:ASP:N	2.10	0.84
1:A:136:LEU:HD21	1:A:155:PRO:HG2	1.62	0.80
1:A:111:SER:HA	4:A:611:HOH:O	1.82	0.80
1:A:305:THR:HG22	1:A:326:VAL:HG22	1.65	0.79
1:A:281:ARG:HG2	1:A:382:LEU:HD12	1.65	0.79
1:A:194:ARG:CB	1:A:198:ARG:HH21	1.97	0.78
1:A:101:LEU:HB3	1:A:106:HIS:HB2	1.64	0.77
1:A:70:ARG:HD2	1:A:78:THR:O	1.83	0.77
1:A:75:ASP:HB3	1:A:78:THR:CG2	2.14	0.77
1:A:64:ARG:HD3	1:A:310:GLU:OE2	1.86	0.75
1:A:220:ASP:C	1:A:221:ASP:OD1	2.24	0.75
1:A:188:THR:HG21	1:A:401:MET:HB2	1.68	0.75
1:A:56:VAL:O	1:A:60:LEU:HD13	1.88	0.74
1:A:136:LEU:CD2	1:A:152:PHE:HA	2.17	0.74
1:A:221:ASP:OD2	4:A:728:HOH:O	2.07	0.72
1:A:136:LEU:HD23	1:A:152:PHE:HA	1.72	0.72
1:A:296:ARG:HA	1:A:333:ASN:ND2	2.04	0.71

*Continued on next page...*



*Continued from previous page...*

Atom-1	Atom-2	Interatomic distance (Å)	Clash overlap (Å)
1:A:338:ARG:HG3	1:A:338:ARG:HH11	1.57	0.70
1:A:75:ASP:HB3	1:A:78:THR:HG21	1.74	0.68
1:A:59:VAL:HG12	1:A:60:LEU:HD12	1.73	0.68
1:A:220:ASP:O	1:A:221:ASP:OD1	2.12	0.67
1:A:310:GLU:HA	1:A:321:ARG:HG3	1.77	0.66
1:A:210:PHE:O	1:A:214:VAL:HG12	1.96	0.66
1:A:83:ILE:HG12	1:A:90:LEU:HG	1.76	0.66
1:A:9:PHE:HB2	1:A:29:TYR:CE2	2.32	0.65
1:A:207:THR:HG22	1:A:211:ARG:HH11	1.61	0.65
1:A:313:ARG:HH11	1:A:313:ARG:CG	2.00	0.65
1:A:63:ARG:HG2	1:A:63:ARG:O	1.96	0.65
1:A:91:ARG:O	1:A:95:GLU:HG3	1.97	0.65
1:A:161:ILE:O	1:A:165:LEU:HD13	1.98	0.64
1:A:171:ASP:O	1:A:175:LEU:HD22	1.98	0.63
1:A:232:ALA:C	1:A:237:SER:HB2	2.19	0.63
1:A:268:LEU:HD11	1:A:409:LEU:HD21	1.80	0.63
1:A:76:THR:C	1:A:78:THR:H	2.00	0.62
1:A:193:GLY:O	1:A:194:ARG:HG2	2.00	0.62
1:A:83:ILE:HG21	1:A:91:ARG:HB2	1.82	0.62
1:A:83:ILE:HG22	1:A:91:ARG:HE	1.65	0.62
1:A:285:GLU:HG2	4:A:638:HOH:O	2.00	0.62
1:A:75:ASP:HB3	1:A:78:THR:HG22	1.82	0.61
1:A:296:ARG:HA	1:A:333:ASN:HD22	1.65	0.61
1:A:194:ARG:HD3	1:A:198:ARG:NH2	2.14	0.61
1:A:411:LEU:C	1:A:412:ASP:OD1	2.39	0.61
1:A:88:ARG:HE	1:A:88:ARG:H	1.49	0.60
1:A:193:GLY:C	1:A:194:ARG:CG	2.63	0.60
1:A:194:ARG:HB3	1:A:198:ARG:HH21	1.66	0.60
1:A:12:MET:CE	1:A:187:THR:O	2.50	0.59
1:A:296:ARG:HB3	1:A:354:GLN:CB	2.32	0.59
1:A:83:ILE:CG2	1:A:91:ARG:HB2	2.32	0.58
1:A:157:PRO:HG2	1:A:256:HIS:HB2	1.85	0.58
1:A:302:GLN:HB2	1:A:401:MET:O	2.03	0.58
1:A:99:VAL:HA	2:A:500:HEM:O2D	2.03	0.58
1:A:284:PRO:HD2	4:A:638:HOH:O	2.01	0.58
1:A:378:LEU:O	1:A:382:LEU:HD23	2.03	0.58
1:A:366:GLY:HA3	2:A:500:HEM:HBC2	1.85	0.58
1:A:73:SER:C	1:A:75:ASP:H	2.07	0.57
1:A:15:ASP:OD1	1:A:17:LYS:N	2.34	0.57
1:A:371:ARG:O	1:A:375:GLU:HG3	2.04	0.57
1:A:398:ALA:HB2	1:A:407:THR:CG2	2.35	0.56

*Continued on next page...*

*Continued from previous page...*

Atom-1	Atom-2	Interatomic distance (Å)	Clash overlap (Å)
1:A:216:ARG:HA	1:A:216:ARG:HE	1.70	0.56
1:A:394:GLU:O	1:A:394:GLU:HG3	2.04	0.56
1:A:296:ARG:HB3	1:A:354:GLN:HB3	1.87	0.56
1:A:338:ARG:HG3	4:A:658:HOH:O	2.05	0.56
1:A:136:LEU:HD21	1:A:152:PHE:HA	1.88	0.55
1:A:83:ILE:HG21	1:A:91:ARG:HA	1.87	0.55
1:A:15:ASP:OD1	1:A:15:ASP:C	2.45	0.55
1:A:136:LEU:HD21	1:A:155:PRO:CG	2.36	0.55
1:A:262:PHE:CE2	1:A:374:ALA:HB1	2.42	0.55
1:A:87:HIS:HB3	1:A:200:GLU:OE1	2.06	0.55
1:A:60:LEU:HD12	1:A:60:LEU:N	2.22	0.54
1:A:116:GLU:HG3	1:A:225:LEU:HD11	1.89	0.54
1:A:247:THR:HA	4:A:775:HOH:O	2.08	0.54
1:A:313:ARG:HG2	1:A:313:ARG:NH1	1.98	0.54
1:A:225:LEU:HD23	1:A:251:LEU:HD23	1.90	0.54
1:A:140:LEU:HD13	1:A:151:GLY:HA3	1.91	0.53
1:A:271:ARG:NH2	1:A:390:ARG:O	2.41	0.53
1:A:346:ASP:O	1:A:349:ARG:HG2	2.08	0.53
1:A:239:LEU:HD11	1:A:244:ILE:HG12	1.92	0.52
1:A:27:ARG:O	1:A:31:GLU:HG3	2.10	0.52
1:A:12:MET:HE1	1:A:187:THR:O	2.09	0.52
1:A:37:ARG:HH11	1:A:37:ARG:HB3	1.75	0.51
1:A:262:PHE:HB2	1:A:300:PRO:HG2	1.92	0.51
1:A:62:ASN:C	1:A:64:ARG:H	2.14	0.51
1:A:207:THR:O	1:A:211:ARG:HB2	2.10	0.51
1:A:223:ASP:O	1:A:224:ASP:HB3	2.12	0.50
1:A:287:THR:HB	1:A:288:PRO:HD3	1.93	0.50
1:A:312:ILE:HG23	1:A:319:ILE:HB	1.94	0.50
1:A:17:LYS:O	1:A:17:LYS:HD3	2.12	0.50
1:A:247:THR:O	1:A:251:LEU:HD13	2.12	0.50
1:A:84:PRO:HG2	1:A:196:TYR:CE2	2.46	0.49
1:A:145:ARG:CG	1:A:145:ARG:HH11	2.24	0.49
1:A:271:ARG:HH11	1:A:271:ARG:HB3	1.76	0.49
1:A:53:TYR:CE2	1:A:338:ARG:HD2	2.47	0.49
1:A:398:ALA:HB2	1:A:407:THR:HG23	1.94	0.49
1:A:145:ARG:NH1	1:A:145:ARG:HG2	2.28	0.49
1:A:160:VAL:HG11	1:A:373:GLU:OE2	2.12	0.49
1:A:192:ASP:C	1:A:193:GLY:O	2.48	0.49
1:A:233:ARG:HD2	1:A:239:LEU:O	2.12	0.49
1:A:255:GLY:HA2	2:A:500:HEM:HAC	1.94	0.49
1:A:207:THR:CG2	1:A:211:ARG:HH11	2.26	0.48

*Continued on next page...*

*Continued from previous page...*

Atom-1	Atom-2	Interatomic distance (Å)	Clash overlap (Å)
1:A:267:VAL:O	1:A:271:ARG:HG3	2.13	0.48
1:A:44:LYS:HG3	1:A:45:PRO:CD	2.43	0.48
1:A:58:ARG:NH2	4:A:639:HOH:O	2.45	0.48
1:A:227:THR:O	1:A:231:ARG:HB2	2.13	0.48
1:A:15:ASP:OD1	1:A:16:LYS:N	2.47	0.48
1:A:276:VAL:HG21	1:A:345:LEU:HD23	1.94	0.48
1:A:83:ILE:HG21	1:A:91:ARG:CB	2.44	0.48
1:A:148:LEU:HD22	1:A:409:LEU:HD12	1.96	0.47
1:A:366:GLY:HA2	4:A:628:HOH:O	2.13	0.47
1:A:83:ILE:HG21	1:A:91:ARG:CA	2.44	0.47
1:A:78:THR:HA	4:A:644:HOH:O	2.15	0.47
1:A:30:ARG:HG2	4:A:656:HOH:O	2.15	0.46
1:A:76:THR:C	1:A:78:THR:N	2.67	0.46
1:A:126:ARG:HB2	1:A:127:PRO:HD3	1.96	0.46
1:A:65:LEU:HD12	1:A:308:ALA:HA	1.98	0.46
1:A:285:GLU:O	1:A:288:PRO:HD2	2.15	0.46
1:A:16:LYS:NZ	1:A:399:ASP:OD1	2.48	0.46
1:A:66:GLY:HA3	1:A:309:TYR:CZ	2.51	0.46
1:A:190:ALA:C	1:A:191:ARG:HG2	2.35	0.46
1:A:126:ARG:N	1:A:127:PRO:CD	2.78	0.46
1:A:338:ARG:HG3	1:A:338:ARG:NH1	2.29	0.46
1:A:98:LEU:O	1:A:101:LEU:HB2	2.16	0.45
1:A:116:GLU:HG3	1:A:225:LEU:CD1	2.46	0.45
1:A:220:ASP:HB3	1:A:222:ARG:HD3	1.98	0.45
1:A:285:GLU:HG2	1:A:285:GLU:H	1.54	0.45
1:A:222:ARG:H	1:A:222:ARG:HG2	1.38	0.45
1:A:23:TYR:OH	1:A:298:ASP:OD1	2.27	0.45
1:A:194:ARG:CD	1:A:198:ARG:NH2	2.80	0.45
1:A:65:LEU:CD1	1:A:308:ALA:HA	2.46	0.45
1:A:304:VAL:HG22	1:A:329:LEU:HD11	1.98	0.44
1:A:60:LEU:N	1:A:60:LEU:CD1	2.80	0.44
1:A:293:GLU:HG3	1:A:347:VAL:HA	1.97	0.44
1:A:305:THR:HG23	4:A:602:HOH:O	2.16	0.44
1:A:87:HIS:O	1:A:91:ARG:HB3	2.17	0.44
1:A:92:THR:O	1:A:96:ASN:ND2	2.42	0.44
1:A:231:ARG:O	1:A:235:THR:HG23	2.18	0.44
1:A:97:TRP:CD1	1:A:250:HIS:HB2	2.53	0.43
1:A:269:THR:O	1:A:273:HIS:HD2	2.00	0.43
1:A:52:THR:HA	1:A:335:ASP:OD2	2.19	0.43
1:A:148:LEU:CD2	1:A:409:LEU:HD12	2.49	0.43
1:A:362:HIS:O	1:A:363:TYR:C	2.57	0.43

*Continued on next page...*

*Continued from previous page...*

Atom-1	Atom-2	Interatomic distance (Å)	Clash overlap (Å)
1:A:147:ASP:HB2	1:A:410:LEU:HD11	2.00	0.43
1:A:338:ARG:HH11	1:A:338:ARG:CG	2.26	0.43
1:A:293:GLU:CG	1:A:347:VAL:HA	2.49	0.43
1:A:296:ARG:O	1:A:299:PRO:HD3	2.18	0.43
1:A:69:ALA:HB2	1:A:307:TRP:CE2	2.53	0.43
1:A:145:ARG:HH11	1:A:145:ARG:HG2	1.82	0.43
1:A:251:LEU:O	1:A:255:GLY:N	2.52	0.43
1:A:256:HIS:CG	1:A:257:GLU:N	2.87	0.43
1:A:277:LEU:O	1:A:281:ARG:HG3	2.18	0.43
1:A:145:ARG:NH1	4:A:675:HOH:O	2.52	0.42
1:A:292:GLU:HA	1:A:292:GLU:OE1	2.19	0.42
1:A:358:GLY:O	1:A:359:LEU:HB2	2.18	0.42
1:A:393:HIS:HB2	1:A:410:LEU:O	2.19	0.42
1:A:226:LEU:HD13	1:A:226:LEU:HA	1.78	0.42
1:A:44:LYS:HG3	1:A:45:PRO:HD2	2.00	0.42
1:A:111:SER:HB3	4:A:640:HOH:O	2.20	0.42
1:A:12:MET:HE3	1:A:187:THR:O	2.18	0.42
1:A:137:LEU:O	1:A:141:ARG:HB2	2.19	0.42
1:A:225:LEU:HD12	1:A:225:LEU:HA	1.73	0.42
1:A:73:SER:C	1:A:75:ASP:N	2.70	0.42
1:A:16:LYS:HA	1:A:16:LYS:HD2	1.87	0.42
1:A:338:ARG:NH1	1:A:338:ARG:CG	2.81	0.41
1:A:137:LEU:CD1	1:A:380:ALA:HB1	2.51	0.41
1:A:157:PRO:O	1:A:161:ILE:HG22	2.20	0.41
1:A:239:LEU:HD11	1:A:244:ILE:CG1	2.50	0.41
1:A:83:ILE:HA	1:A:84:PRO:HD3	1.90	0.41
1:A:164:LEU:HD12	1:A:164:LEU:HA	1.78	0.41
1:A:156:LEU:HB3	1:A:157:PRO:CD	2.51	0.41
1:A:299:PRO:HA	1:A:300:PRO:HD3	1.74	0.41
1:A:79:ALA:HA	1:A:80:PRO:HD3	1.88	0.41
1:A:194:ARG:O	1:A:195:GLY:O	2.38	0.41
1:A:98:LEU:HB3	1:A:250:HIS:CE1	2.56	0.41
1:A:196:TYR:O	1:A:197:ALA:C	2.59	0.41
1:A:270:LEU:HD12	1:A:270:LEU:HA	1.85	0.41
1:A:400:ASP:HB3	1:A:403:PHE:O	2.21	0.41
1:A:17:LYS:O	1:A:17:LYS:CD	2.69	0.41
1:A:229:LEU:HD12	1:A:229:LEU:HA	1.94	0.40
1:A:145:ARG:HB3	4:A:767:HOH:O	2.21	0.40
1:A:65:LEU:HD12	1:A:65:LEU:HA	2.00	0.40

There are no symmetry-related clashes.

## 5.3 Torsion angles [i](#)

### 5.3.1 Protein backbone [i](#)

In the following table, the Percentiles column shows the percent Ramachandran outliers of the chain as a percentile score with respect to all X-ray entries followed by that with respect to entries of similar resolution.

The Analysed column shows the number of residues for which the backbone conformation was analysed, and the total number of residues.

Mol	Chain	Analysed	Favoured	Allowed	Outliers	Percentiles
1	A	411/425 (97%)	374 (91%)	34 (8%)	3 (1%)	22 39

All (3) Ramachandran outliers are listed below:

Mol	Chain	Res	Type
1	A	195	GLY
1	A	193	GLY
1	A	363	TYR

### 5.3.2 Protein sidechains [i](#)

In the following table, the Percentiles column shows the percent sidechain outliers of the chain as a percentile score with respect to all X-ray entries followed by that with respect to entries of similar resolution.

The Analysed column shows the number of residues for which the sidechain conformation was analysed, and the total number of residues.

Mol	Chain	Analysed	Rotameric	Outliers	Percentiles
1	A	338/347 (97%)	282 (83%)	56 (17%)	2 4

All (56) residues with a non-rotameric sidechain are listed below:

Mol	Chain	Res	Type
1	A	11	LEU
1	A	12	MET
1	A	15	ASP
1	A	17	LYS
1	A	22	PRO
1	A	37	ARG
1	A	40	SER
1	A	44	LYS

*Continued on next page...*

*Continued from previous page...*

<b>Mol</b>	<b>Chain</b>	<b>Res</b>	<b>Type</b>
1	A	45	PRO
1	A	63	ARG
1	A	65	LEU
1	A	76	THR
1	A	78	THR
1	A	88	ARG
1	A	111	SER
1	A	113	LEU
1	A	120	SER
1	A	132	LEU
1	A	144	ARG
1	A	145	ARG
1	A	148	LEU
1	A	159	LEU
1	A	164	LEU
1	A	170	GLU
1	A	175	LEU
1	A	182	LEU
1	A	191	ARG
1	A	192	ASP
1	A	194	ARG
1	A	204	GLN
1	A	211	ARG
1	A	214	VAL
1	A	215	ASP
1	A	216	ARG
1	A	220	ASP
1	A	222	ARG
1	A	225	LEU
1	A	226	LEU
1	A	229	LEU
1	A	231	ARG
1	A	237	SER
1	A	239	LEU
1	A	270	LEU
1	A	279	GLU
1	A	285	GLU
1	A	296	ARG
1	A	313	ARG
1	A	318	ASP
1	A	328	LEU
1	A	338	ARG

*Continued on next page...*

*Continued from previous page...*

Mol	Chain	Res	Type
1	A	349	ARG
1	A	379[A]	ARG
1	A	379[B]	ARG
1	A	394	GLU
1	A	408	ARG
1	A	412	ASP

Sometimes sidechains can be flipped to improve hydrogen bonding and reduce clashes. All (6) such sidechains are listed below:

Mol	Chain	Res	Type
1	A	105	HIS
1	A	106	HIS
1	A	143	GLN
1	A	204	GLN
1	A	250	HIS
1	A	273	HIS

### 5.3.3 RNA [i](#)

There are no RNA molecules in this entry.

## 5.4 Non-standard residues in protein, DNA, RNA chains [i](#)

There are no non-standard protein/DNA/RNA residues in this entry.

## 5.5 Carbohydrates [i](#)

There are no monosaccharides in this entry.

## 5.6 Ligand geometry [i](#)

2 ligands are modelled in this entry.

In the following table, the Counts columns list the number of bonds (or angles) for which Mogul statistics could be retrieved, the number of bonds (or angles) that are observed in the model and the number of bonds (or angles) that are defined in the Chemical Component Dictionary. The Link column lists molecule types, if any, to which the group is linked. The Z score for a bond length (or angle) is the number of standard deviations the observed value is removed from the expected value. A bond length (or angle) with  $|Z| > 2$  is considered an outlier worth inspection. RMSZ is the root-mean-square of all Z scores of the bond lengths (or angles).

Mol	Type	Chain	Res	Link	Bond lengths			Bond angles		
					Counts	RMSZ	# Z  > 2	Counts	RMSZ	# Z  > 2
2	HEM	A	500	1	41,50,50	1.43	7 (17%)	45,82,82	1.21	5 (11%)
3	2CC	A	501	-	29,35,35	1.68	6 (20%)	26,53,53	0.87	0

In the following table, the Chirals column lists the number of chiral outliers, the number of chiral centers analysed, the number of these observed in the model and the number defined in the Chemical Component Dictionary. Similar counts are reported in the Torsion and Rings columns. '-' means no outliers of that kind were identified.

Mol	Type	Chain	Res	Link	Chirals	Torsions	Rings
2	HEM	A	500	1	-	2/12/54/54	-
3	2CC	A	501	-	-	0/8/16/16	0/5/5/5

All (13) bond length outliers are listed below:

Mol	Chain	Res	Type	Atoms	Z	Observed(Å)	Ideal(Å)
3	A	501	2CC	C19-C6	-3.52	1.33	1.40
2	A	500	HEM	C3C-CAC	-3.47	1.40	1.47
3	A	501	2CC	C18-C11	-3.43	1.33	1.40
2	A	500	HEM	CHA-C4D	3.16	1.43	1.35
2	A	500	HEM	CMB-C2B	2.56	1.56	1.50
3	A	501	2CC	C1-C20	-2.45	1.39	1.42
2	A	500	HEM	CHB-C1B	2.43	1.41	1.35
3	A	501	2CC	C16-C17	-2.43	1.39	1.42
2	A	500	HEM	CBB-CAB	2.32	1.41	1.30
2	A	500	HEM	CBA-CGA	2.31	1.55	1.50
3	A	501	2CC	C5-C6	-2.17	1.39	1.45
3	A	501	2CC	C11-C12	-2.10	1.39	1.45
2	A	500	HEM	CBD-CGD	2.09	1.55	1.50

All (5) bond angle outliers are listed below:

Mol	Chain	Res	Type	Atoms	Z	Observed(°)	Ideal(°)
2	A	500	HEM	C4B-CHC-C1C	3.87	127.66	122.56
2	A	500	HEM	C4C-CHD-C1D	2.62	126.01	122.56
2	A	500	HEM	C4B-C3B-C2B	-2.58	105.07	107.11
2	A	500	HEM	C2C-C3C-C4C	-2.38	105.24	106.90
2	A	500	HEM	O2D-CGD-CBD	2.01	120.50	114.03

There are no chirality outliers.

All (2) torsion outliers are listed below:



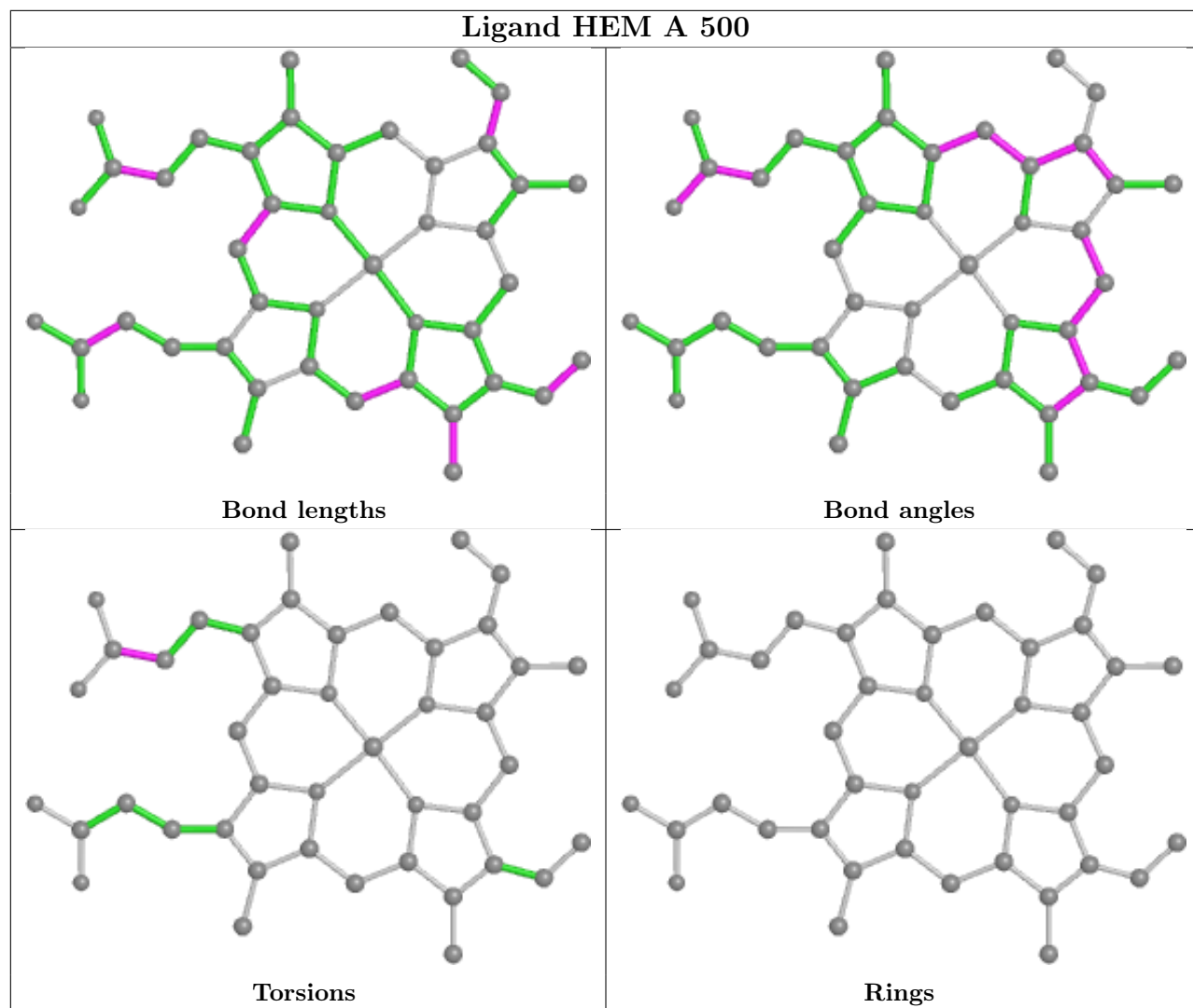
Mol	Chain	Res	Type	Atoms
2	A	500	HEM	CAD-CBD-CGD-O2D
2	A	500	HEM	CAD-CBD-CGD-O1D

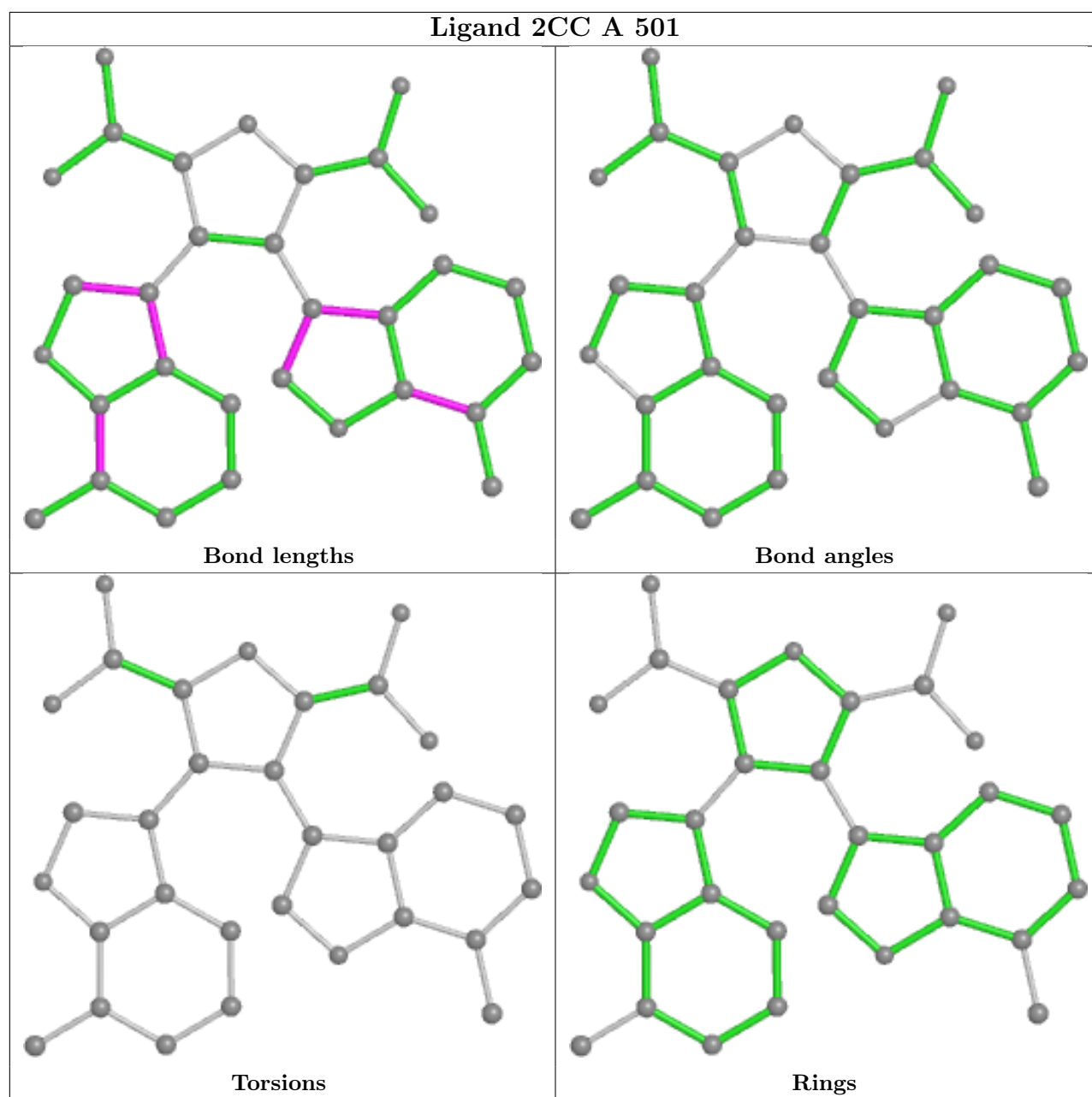
There are no ring outliers.

1 monomer is involved in 3 short contacts:

Mol	Chain	Res	Type	Clashes	Symm-Clashes
2	A	500	HEM	3	0

The following is a two-dimensional graphical depiction of Mogul quality analysis of bond lengths, bond angles, torsion angles, and ring geometry for all instances of the Ligand of Interest. In addition, ligands with molecular weight > 250 and outliers as shown on the validation Tables will also be included. For torsion angles, if less than 5% of the Mogul distribution of torsion angles is within 10 degrees of the torsion angle in question, then that torsion angle is considered an outlier. Any bond that is central to one or more torsion angles identified as an outlier by Mogul will be highlighted in the graph. For rings, the root-mean-square deviation (RMSD) between the ring in question and similar rings identified by Mogul is calculated over all ring torsion angles. If the average RMSD is greater than 60 degrees and the minimal RMSD between the ring in question and any Mogul-identified rings is also greater than 60 degrees, then that ring is considered an outlier. The outliers are highlighted in purple. The color gray indicates Mogul did not find sufficient equivalents in the CSD to analyse the geometry.





## 5.7 Other polymers [i](#)

There are no such residues in this entry.

## 5.8 Polymer linkage issues [i](#)

There are no chain breaks in this entry.

## 6 Fit of model and data [i](#)

### 6.1 Protein, DNA and RNA chains [i](#)

In the following table, the column labelled ‘#RSRZ> 2’ contains the number (and percentage) of RSRZ outliers, followed by percent RSRZ outliers for the chain as percentile scores relative to all X-ray entries and entries of similar resolution. The OWAB column contains the minimum, median, 95<sup>th</sup> percentile and maximum values of the occupancy-weighted average B-factor per residue. The column labelled ‘Q< 0.9’ lists the number of (and percentage) of residues with an average occupancy less than 0.9.

Mol	Chain	Analysed	<RSRZ>	#RSRZ>2	OWAB(Å <sup>2</sup> )	Q<0.9
1	A	411/425 (96%)	-0.21	15 (3%) 42 46	19, 37, 72, 97	1 (0%)

All (15) RSRZ outliers are listed below:

Mol	Chain	Res	Type	RSRZ
1	A	5	THR	5.1
1	A	42	PRO	4.8
1	A	220	ASP	4.7
1	A	219	GLY	4.4
1	A	4	ALA	3.9
1	A	142	ALA	3.1
1	A	218	GLY	2.7
1	A	192	ASP	2.6
1	A	43	GLY	2.6
1	A	6	LEU	2.5
1	A	191	ARG	2.5
1	A	221	ASP	2.3
1	A	194	ARG	2.1
1	A	44	LYS	2.1
1	A	223	ASP	2.0

### 6.2 Non-standard residues in protein, DNA, RNA chains [i](#)

There are no non-standard protein/DNA/RNA residues in this entry.

### 6.3 Carbohydrates [i](#)

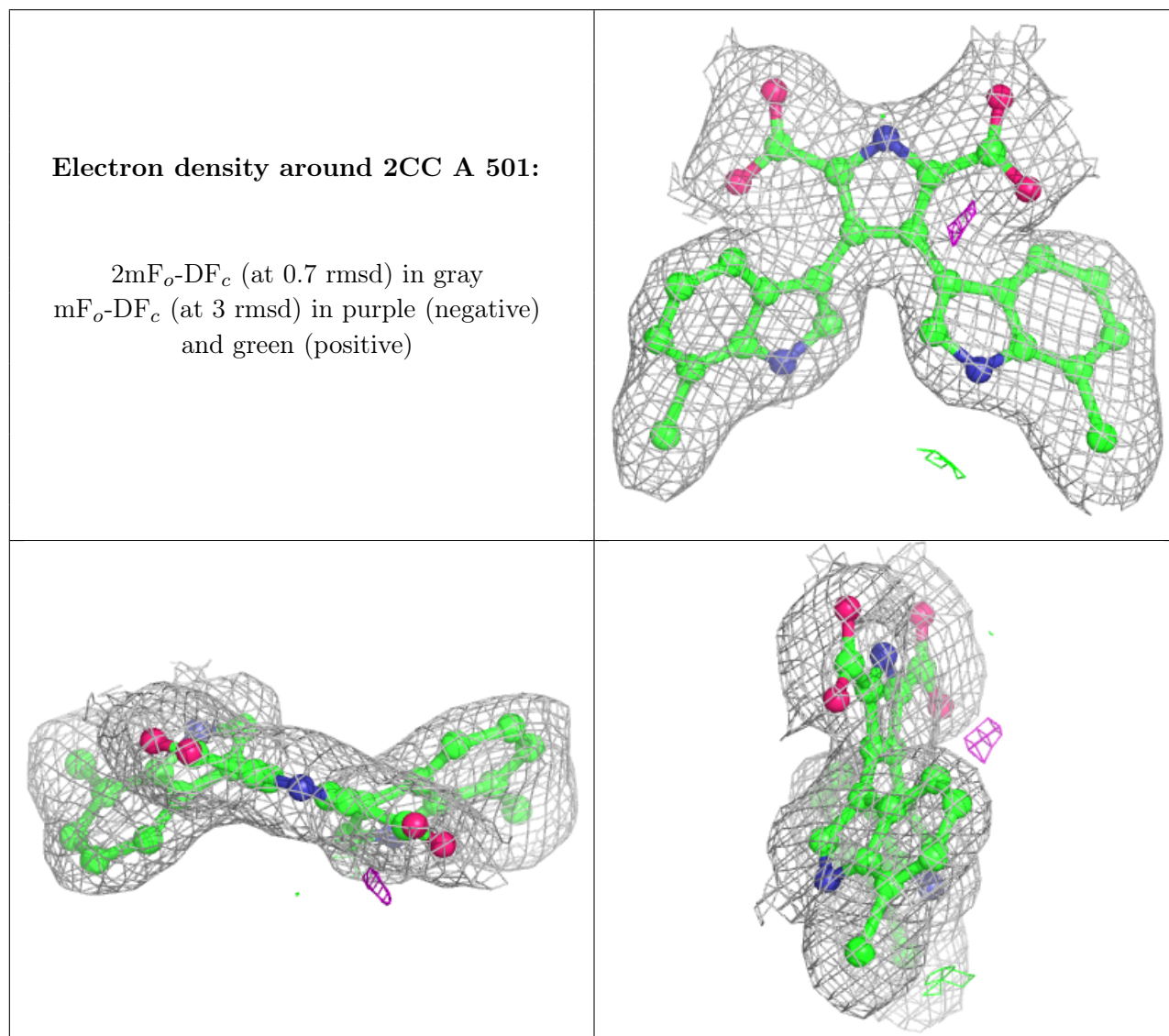
There are no monosaccharides in this entry.

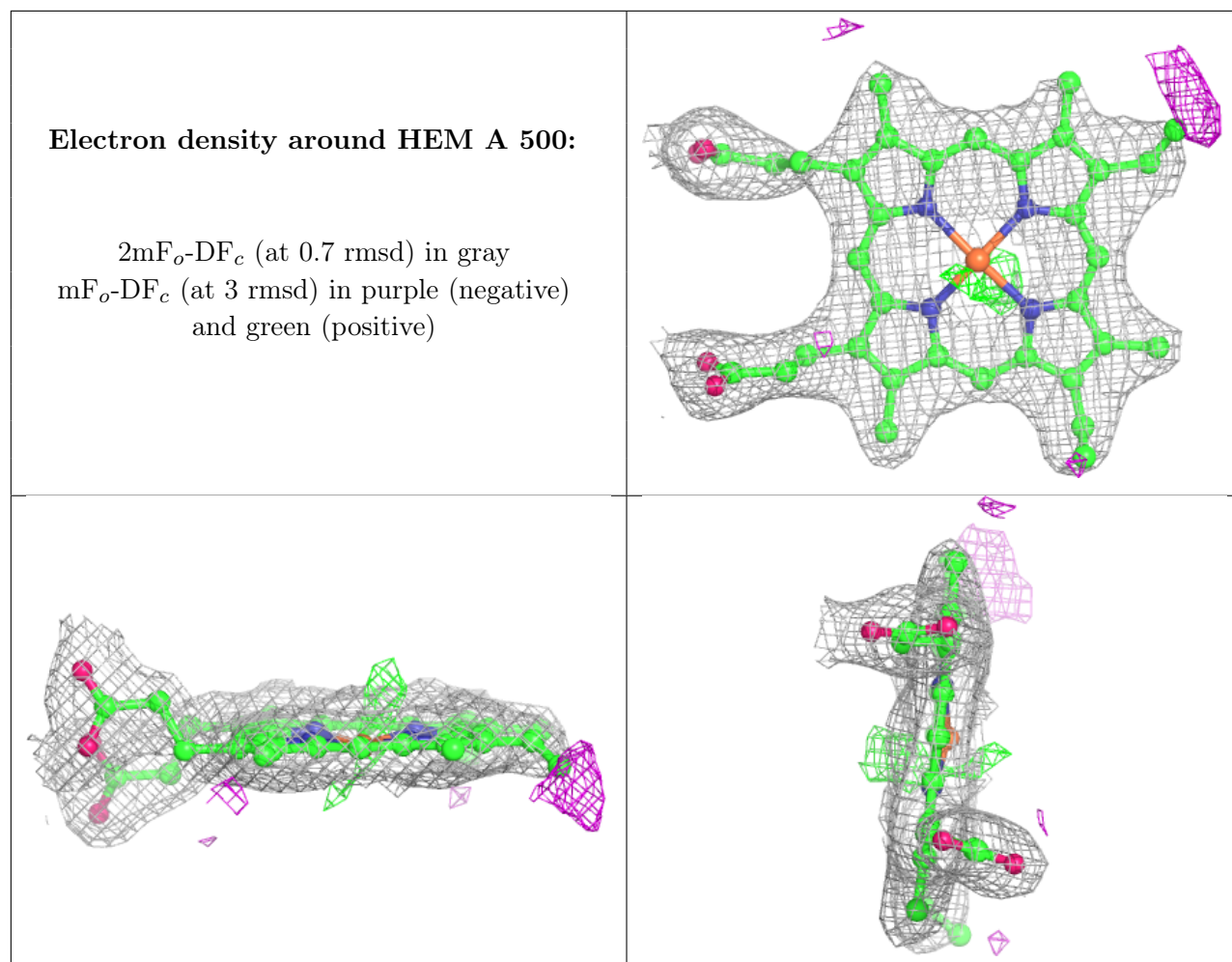
## 6.4 Ligands [i](#)

In the following table, the Atoms column lists the number of modelled atoms in the group and the number defined in the chemical component dictionary. The B-factors column lists the minimum, median, 95<sup>th</sup> percentile and maximum values of B factors of atoms in the group. The column labelled 'Q<0.9' lists the number of atoms with occupancy less than 0.9.

Mol	Type	Chain	Res	Atoms	RSCC	RSR	B-factors(Å <sup>2</sup> )	Q<0.9
3	2CC	A	501	31/31	0.96	0.11	19,29,35,39	0
2	HEM	A	500	43/43	0.97	0.13	15,23,30,42	0

The following is a graphical depiction of the model fit to experimental electron density of all instances of the Ligand of Interest. In addition, ligands with molecular weight > 250 and outliers as shown on the geometry validation Tables will also be included. Each fit is shown from different orientation to approximate a three-dimensional view.





## 6.5 Other polymers [i](#)

There are no such residues in this entry.